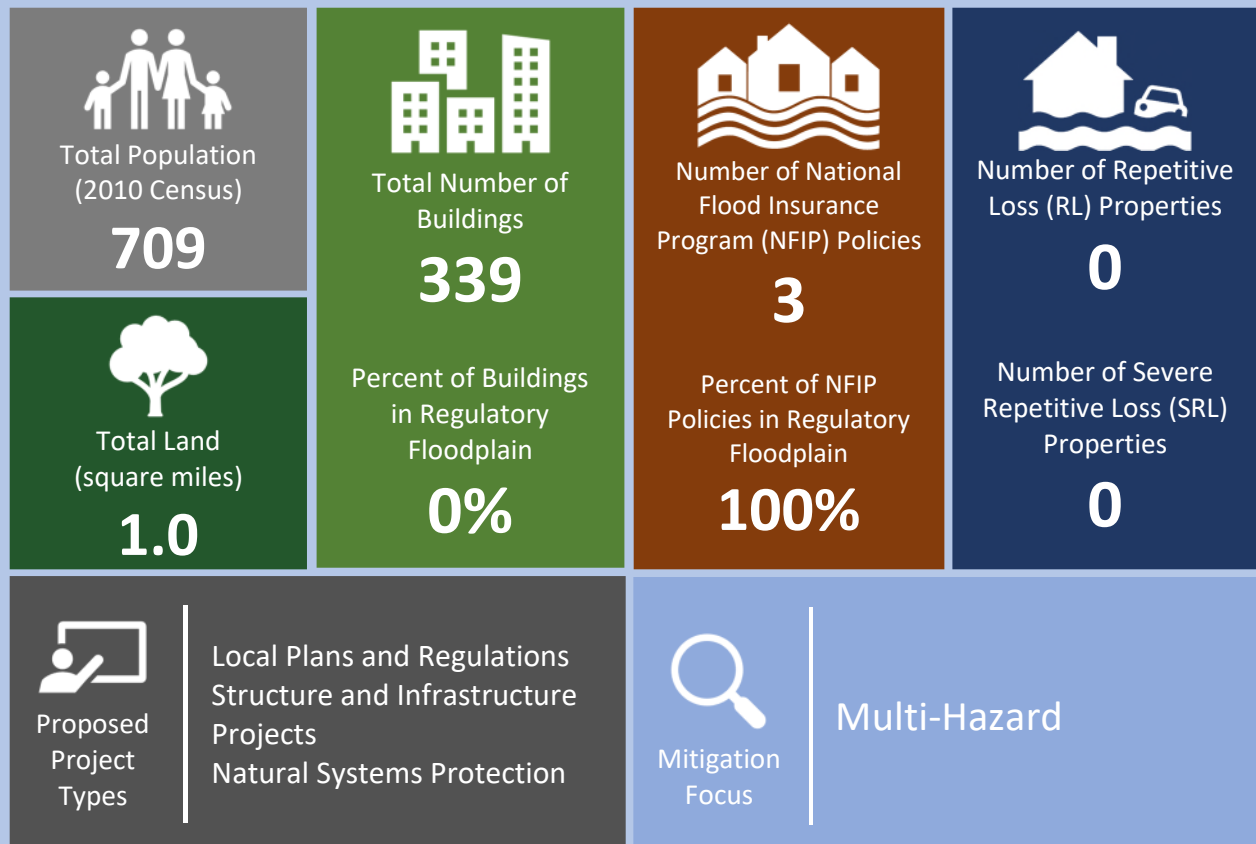
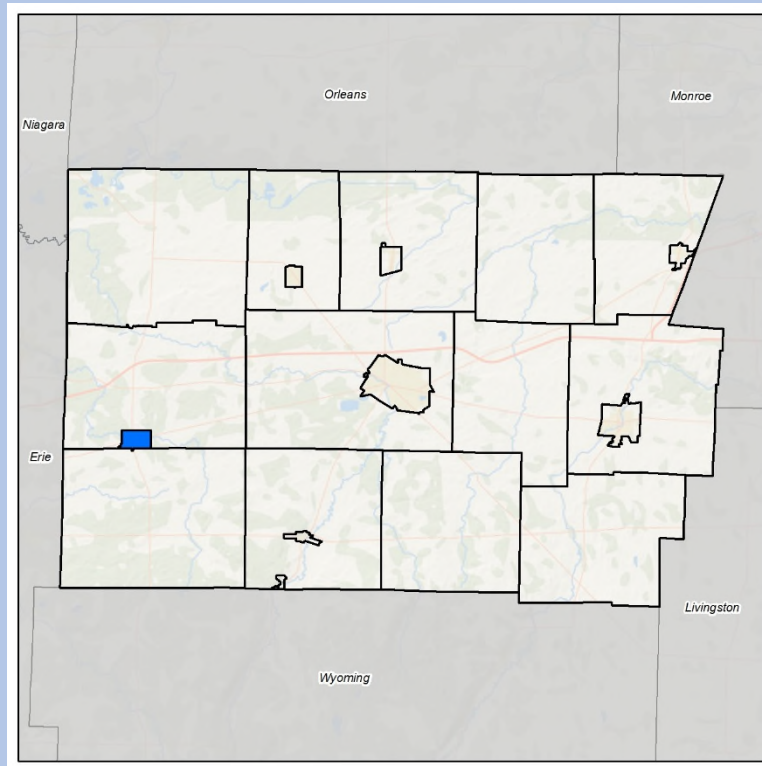




# MUNICIPAL ANNEX | Village of Corfu





## 9.12 Village of Corfu

This section presents the jurisdictional annex for the Village of Corfu. It includes resources and information to assist public and private sectors to reduce losses from future hazard events. This annex is not guidance of what to do when a disaster occurs. Rather, this annex concentrates on actions that can be implemented prior to a disaster to reduce or eliminate damage to property and people. This annex includes a general overview of the municipality and who in the village participated in the planning process, an assessment of the Village of Corfu’s risk and vulnerability, the different capabilities used in the village, and an action plan that will be implemented to achieve a more resilient community.

### 9.12.1 Hazard Mitigation Plan Point of Contact

The following individuals have been identified as the hazard mitigation plan’s primary and alternate points of contact.

Primary Point of Contact	Alternate Point of Contact
Name: Jenny McMartin Eck Title: Deputy Mayor Phone Number: 716-392-1440 Address: 116 East Main Street, Corfu, NY 14036 Email: deputymayor@corfuny.com	Name: Al Graham Title: Trustee Phone Number: 585-409-0785 Address: 116 East Main Street, Corfu, NY 14036 Email: pemcoach@rochester.rr.com
Floodplain Administrator	
Name: Jenny McMartin Eck Title: Deputy Mayor Phone Number: 716-392-1440 Address: 116 East Main Street, Corfu, NY 14036 Email: deputymayor@corfuny.com	

### 9.12.2 Municipal Profile

The Village of Corfu is in the western portion of Genesee County, at the southern edge of the Town of Pembroke and the northern edge of the Town of Darien. The village as a total area of 1 square mile. Murder Creek flows west through the village before joining Tonawanda Creek. The government for the Village of Corfu consist of elected and appointed officials including a Mayor, a Board of Trustees, a Village Court, a Village Planning Board, and a Village Zoning Board of Appeals.

The estimated 2017 U.S. Census American Community Survey population was 685, a decrease from the 2010 Census (709). Data from the 2017 U.S. Census American Community Survey estimates that 18.1 percent of the population is 65 years of age or older. Communities must deploy a support system that enables all populations to safely reach shelters or to quickly evacuate a hazard area.

### History and Cultural Resources

The Village of Corfu was originally called Longs Corners. The name Corfu was adopted when a post office was established. The Village of Corfu was incorporated in 1868.

### Growth/Development Trends

The following table summarizes recent residential/commercial development from 2008 to the present and any known or anticipated major residential/commercial development and major infrastructure development that has been identified in the next five years within the municipality. Figure 9.12-2 illustrates the hazard areas along with the location of potential new development.





**Table 9.12-1. Growth and Development**

Property or Development Name	Type (e.g. Res., Comm.)	# of Units / Structures	Location (address and/or Parcel ID)	Known Hazard Zone(s)	Description/Status of Development
<b>Recent Development from 2008 to present</b>					
Corfu Commons Apartments	Senior townhouses	42 units	49 W Main Street 7.-1-11	None	In progress of permitting compliance with all parties (i.e., DOT, village)
Fieldcrest Meadows subdivision	Individual homes	17 units	2-90 Fieldcrest 7.-1-1.2	Floodplain	1 model unit in place, working with utilities
<b>Known or Anticipated Development in the Next Five (5) Years</b>					
None Identified					

*\* Only location-specific hazard zones or vulnerabilities identified.*

### 9.12.3 Hazard Event History Specific to the Village of Corfu

Genesee County has a history of natural and non-natural hazard events as detailed in Volume I, Section 5.0 (Risk Assessment). A summary of historical events is provided in each of the hazard profiles and includes a chronology of events that have affected the county and its municipalities. For the purpose of this plan update, events that have occurred in the county from 2007 to present were summarized to indicate the range and impact of hazard events in the community. Information regarding specific damages is included, if available, based on reference material or local sources. This information is presented in the table below.

**Table 9.12-2. Hazard Event History**

Dates of Event	Event Type (Disaster Declaration if applicable)	Genesee County Designated?	Summary of Event	Municipal Summary of Damages and Losses
July 25, 2009	Tornado	N/A	A tornado crossed the Town of Darien and Village of Corfu in Genesee county. The tornado was rated an EF1 with wind speeds estimated close to 100 mph.	Several buildings damaged or destroyed as a tornado went thru the east end of village. The area on East Main St where tornado went through was temporarily closed due to downed power lines. Power was lost to Greenhouse and Sterling Tent, as well as residents in the path. Costs were incurred for staff time for cleanup and materials.
April 26- May 8, 2011	Severe Storms, Flooding, Tornadoes, High Wind (DR-1993)	No	Following the passage of a strong cold front, strong synoptic winds developed across western New York. Gusts reached up to 83 mph.	Several residential properties affected by high water levels. Village underpass was flooded. Used WQIP Drainage Grant to assist in taking care of worst drainage locations.
October 29, 2012	High Wind (DR-4085)	Yes	Remnants of Hurricane Sandy brought strong winds and heavy rains to western and north central New York. Wind gusts were measured to 60 mph.	Although the county was impacted, the village did not report damages.



Dates of Event	Event Type (Disaster Declaration if applicable)	Genesee County Designated?	Summary of Event	Municipal Summary of Damages and Losses
November 17-19, 2014	Lake Effect Snow (DR-4204)	Yes	Heavy lake effect snow fell throughout the region in back to back events resulting in over 3 feet of snow and several deaths in the region.	<p>Roads were impassable throughout the village, especially at intersection of 33 &amp; 77. Due to lack of assistance for the village from the town and county, the village paid to have individuals with snow removal equipment assist with the clearing. With local cooperation Corfu was one of the first municipalities to have effectively opened up the roads however with the roads still unclear outside the village limits, many vehicles were directed to the Fire Hall for parking until the other roads were passable.</p> <p>There were utility outages (no exact count available) and village employees and fire department personnel made the rounds to assess residential and commercial needs. Several commercial locations donated food and beverages to the workers and stranded motorists. Phone calls were made by the village for assistance from the Town of Pembroke, Genesee County and Emergency Management. No supporting documentation is available. Any residential and commercial requests were taken care of by Village Police or Fire Department. Village Maintenance workers accumulated overtime and police officers worked beyond their allotted hours. Debris cleanup and removal was taken care of by Village Maintenance when the roads outside the Village became passable.</p>
March 8, 2017	High Wind	N/A	Deep low pressure brought strong winds to the entire region with sustained winds up to 49 mph and wind gusts as high as 81 mph.	Wind damaged Grinder pump at Lift Station.

Notes:

DR Major Disaster Declaration (FEMA)  
 N/A Not applicable



Figure 9.12-1. July 25, 2009 Tornado



Notes: Photo of tornado provided by Village of Corfu

### 9.12.4 Hazard Ranking and Jurisdiction-Specific Vulnerabilities

The hazard profiles in Section 5.0 (Risk Assessment) have detailed information regarding each plan participant’s vulnerability to the identified hazards. The following summarizes the hazard vulnerabilities and their ranking in the Village of Corfu.

#### Hazard Risk Ranking

This section includes the community specific identification of the primary hazard concerns based on identified problems, impacts and the results of the risk assessment as presented in Section 5.0 (Risk Assessment). The ranking process involves an assessment of the likelihood of occurrence for each hazard, along with its potential impacts on people, property, and the economy as well as community capability and changing future climate conditions. This input supports the mitigation action development to target those hazards with highest level of concern.

As discussed in Section 5.3 (Hazard Ranking), each participating town or village may have differing degrees of risk exposure and vulnerability compared to Genesee County as a whole. Therefore, each municipality ranked the degree of risk to each hazard as it pertains to their community. The table below summarizes the hazard risk/vulnerability rankings of potential natural hazards for the Village of Corfu. The Village of Corfu has reviewed the county hazard risk/vulnerability risk ranking table as well as its individual results to reflect the relative risk of the hazards of concern to the community.

Table 9.12-3. Hazard Risk/Vulnerability Risk Ranking

Hazard type	Estimate of Potential Dollar Losses to Structures Vulnerable to the Hazard <sup>a, c</sup>	Probability of Occurrence	Risk Ranking Score (Probability x Impact)	Hazard Ranking <sup>b</sup>
Civil Unrest	Damage estimate not available	Occasional	24	Medium
Drought	Damage estimate not available	Frequent	27	Medium
Earthquake <sup>d, e</sup>	RCV Exposed to D and E Soils: \$105,289	Occasional	32	High
Epidemic	Damage estimate not available	Frequent	39	High
Extreme Temperature	Damage estimate not available	Frequent	39	High



Hazard type	Estimate of Potential Dollar Losses to Structures Vulnerable to the Hazard <sup>a, c</sup>	Probability of Occurrence	Risk Ranking Score (Probability x Impact)	Hazard Ranking <sup>b</sup>
Flood <sup>d</sup>	RCV Exposed to 1% Annual Chance Flood Event \$0	Frequent	18	Medium
Hazardous Materials	Damage estimate not available	Frequent	42	High
Severe Storm	100-year MRP: \$0 500-year MRP: \$0	Frequent	48	High
Severe Winter Weather	100-year MRP: \$922,500 500-year MRP: \$4,612,500	Frequent	51	High
Terrorism	Damage estimate not available	Rare	14	Medium
Transportation Accident	Damage estimate not available	Frequent	42	High
Utility Failure	Damage estimate not available	Frequent	45	High
Wildfire	Estimated RCV in WUI Hazard Area \$36,013,000	Occasional	30	Medium

Notes:

- a. Building damage ratio estimates based on FEMA 386-2 (August 2001)
- b. The valuation of general building stock and loss estimates was based on custom inventory for the municipality.  
High = Total hazard priority risk ranking score of 31 and above  
Medium = Total hazard priority risk ranking of 20-30  
Low = Total hazard risk ranking below 20
- c. Loss estimates for the severe storm and severe winter storm hazards are structural values only and do not include the value of contents.
- d. Loss estimates for the flood and earthquake hazards represent both structure and contents.
- e. The HAZUS-MH earthquake model results are reported by Census Tract.

### Critical Facilities

DEC Statute 6 CRR-NY 502.4 sets forth floodplain management criteria for state projects located in flood hazard areas. The law states that no such projects related to critical facilities shall be undertaken in a SFHA unless constructed according to specific mitigation specifications, including being raised 2 feet above the BFE. This statute is outlined at <http://tinyurl.com/6-CRR-NY-502-4>. While all vulnerabilities should be assessed and documented, the state places a high priority on exposure to flooding. Critical facilities located in an SFHA, or having ever sustained previous flooding, must be protected to the 500-year flood event, or worst damage scenario. For those that do not meet these criteria, the jurisdiction must identify an action to achieve this level of protection (NYS DHSES 2017).

The table below identifies critical facilities in the community located in the 1-percent and 0.2-percent floodplain and presents HAZUS-MH estimates of the damage and loss of use to critical facilities as a result of a 1-percent annual chance flood event.

**Table 9.12-4. Potential Flood Losses to Critical Facilities**

Name	Type	Exposure		Addressed by Proposed Action
		1% Event	0.2% Event	
31037017500000-Corfu Well	Gas Well	X	X	V. Corfu-3

Source: Genesee County 2017; HAZUS-MH





### Identified Issues

The municipality has identified the following vulnerabilities within their community:

- Murder Creek is filled with debris and may cause flooding.
- The village requires a listing of elderly and special needs residents that would need assistance during hazard events and evacuations.

### 9.12.5 Capability Assessment

This section identifies the following capabilities of the local jurisdiction:

- Planning and regulatory capability.
- Administrative and technical capability.
- Fiscal capability.
- Community classification.
- National Flood Insurance Program.
- Integration of mitigation planning into existing and future planning mechanisms.

### Planning and Regulatory Capability

The table below summarizes the regulatory tools that are available to the Village of Corfu.

**Table 9.12-5. Planning and Regulatory Tools**

Tool / Program (code, ordinance, plan)	Do you have this? (Yes/No) If Yes, date of adoption or update	Authority (local, county, state, federal)	Dept. /Agency Responsible	Code Citation and Comments (Code Chapter, name of plan, explanation of authority, etc.)
<b>Planning Capability</b>				
Master Plan	No	-	-	-
Capital Improvements Plan	No	-	-	-
Floodplain Management / Basin Plan	Yes	State	NYS DEC	Floodplain Management Plan
Stormwater Management Plan	No	-	-	-
Open Space Plan	No	-	-	-
Stream Corridor Management Plan	No	-	-	-
Watershed Management or Protection Plan	No	-	-	-
Economic Development Plan	Yes	Local	Town of Pembroke	Economic Development Plan
Comprehensive Emergency Management Plan	Yes	State	NYS DHSES	Comprehensive Emergency Management Plan
Emergency Operation Plan	Yes	County	Emergency Management	Emergency Operations Plan
Post-Disaster Recovery Plan	No	-	-	-
Transportation Plan	No	-	-	-
Strategic Recovery Planning Report	No	-	-	-
Other Plans:	No	-	-	-





Tool / Program (code, ordinance, plan)	Do you have this? (Yes/No) If Yes, date of adoption or update	Authority (local, county, state, federal)	Dept. /Agency Responsible	Code Citation and Comments (Code Chapter, name of plan, explanation of authority, etc.)
<b>Regulatory Capability</b>				
Building Code	Yes	State & Local	NYS DEC	NYS Building Code
Zoning Ordinance	Yes	State & Local	NYS DEC	Village of Corfu Zoning Law
Subdivision Ordinance	Yes	State & Local	NYS DEC	Local ordinances are carried out by NYS DEC
NFIP Flood Damage Prevention Ordinance	Yes	Federal, State, Local	NYS DEC	Local ordinances are carried out by NYS DEC
NFIP: Cumulative Substantial Damages	No	-	-	-
NFIP: Freeboard	Yes	State, Local	NYS DEC	State mandated BFE+2 for all construction, both residential and non-residential
Growth Management Ordinances	No	-	-	-
Site Plan Review Requirements	Yes	State & Local	NYS DEC	Local ordinances are carried out by NYS DEC
Stormwater Management Ordinance	Yes	State & Local	NYS DEC	Local ordinances are carried out by NYS DEC
Municipal Separate Storm Sewer System (MS4)	Yes	State & Local	NYS DEC	Local ordinances are carried out by NYS DEC
Natural Hazard Ordinance	No	-	-	-
Post-Disaster Recovery Ordinance	No	-	-	-
Real Estate Disclosure Requirement	Yes	State	NYS, Real Estate Agents	NYS mandate, Property Condition Disclosure Act, NY Code - Article 14 §460-467
Other (Special Purpose Ordinances [i.e., sensitive areas, steep slope])	No	-	-	-

**Administrative and Technical Capability**

The table below summarizes potential staff and personnel resources available to the Village of Corfu.

**Table 9.12-6. Administrative and Technical Capabilities**

Resources	Is this in place? (Yes or No)	Department/ Agency/Position
<b>Administrative Capability</b>		
Planning Board	Yes	Planning Board
Mitigation Planning Committee	No	-
Environmental Board/Commission	No	-
Open Space Board/Committee	No	-
Economic Development Commission/Committee	No	-
Maintenance programs to reduce risk	No	-
Mutual aid agreements	Yes	Local, Town, and County







Resources	Is this in place? (Yes or No)	Department/ Agency/Position
<b>Technical/Staffing Capability</b>		
Planner(s) or engineer(s) with knowledge of land development and land management practices	Yes	Engineer (Chatfield)
Engineer(s) or professional(s) trained in construction practices related to buildings and/or infrastructure	Yes	Engineer (Chatfield)
Planners or engineers with an understanding of natural hazards	Yes	Engineer (Chatfield)
NFIP Floodplain Administrator (FPA)	Yes	Deputy Mayor
Surveyor(s)	No	Contractor
Personnel skilled or trained in GIS and/or Hazards United States (HAZUS) – Multi-Hazards (MH) applications	No	-
Scientist familiar with natural hazards	No	-
Emergency Manager	Yes	County
Grant writer(s)	Yes	MBR (Contractor)
Staff with expertise or training in benefit/cost analysis	Yes	Engineer (Chatfield)
Professionals trained in conducting damage assessments	Yes	Engineer (Chatfield)

**Fiscal Capability**

The table below summarizes financial resources available to the Village of Corfu.

**Table 9.12-7. Fiscal Capabilities**

Financial Resources	Accessible or Eligible to Use (Yes/No)
Community development Block Grants (CDBG, CDBG-DR)	No
Capital improvements project funding	No
Authority to levy taxes for specific purposes	Yes – Village Clerk
User fees for water, sewer, gas or electric service	Yes – Sewer
Impact fees for homebuyers or developers of new development/homes	Yes
Stormwater utility fee	No
Incur debt through general obligation bonds	Yes
Incur debt through special tax bonds	Yes
Incur debt through private activity bonds	No
Withhold public expenditures in hazard-prone areas	No
Other federal or state Funding Programs	Yes
Open Space Acquisition funding programs	No
Other	No

**Community Classifications**

The table below summarizes classifications for community program available to the Village of Corfu.





**Table 9.12-8. Community Classifications**

Program	Do you have this? (Yes/No)	Classification (if applicable)	Date Classified (if applicable)
Community Rating System (CRS)	No	-	-
Building Code Effectiveness Grading Schedule (BCEGS)	No	-	-
Public Protection (ISO Fire Protection Classes 1 to 10)	Yes	4	-
NYSDEC Climate Smart Community	No	-	-
Storm Ready Certification	No	-	-
Firewise Communities classification	No	-	-
Natural disaster/safety programs in/for schools	Yes	County – SRO	-
Organizations with mitigation focus (advocacy group, non-government)	No	-	-
Public education program/outreach (through website, social media)	No	-	-
Public-private partnership initiatives addressing disaster-related issues	No	-	-

Note:

- N/A Not applicable
- NP Not participating
- Unavailable

The classifications listed above relate to the community’s ability to provide effective services to lessen its vulnerability to the hazards identified. These classifications can be viewed as a gauge of the community’s capabilities in all phases of emergency management (preparedness, response, recovery and mitigation) and are used as an underwriting parameter for determining the costs of various forms of insurance. The CRS class applies to flood insurance while the BCEGS and Public Protection classifications apply to standard property insurance. CRS classifications range on a scale of 1 to 10 with class 1 being the best possible classification, and class 10 representing no classification benefit. Firewise classifications include a higher classification when the subject property is located beyond 1000 feet of a creditable fire hydrant and is within 5 road miles of a recognized fire station.

Criteria for classification credits are outlined in the following documents:

- The Community Rating System Coordinators Manual.
- The Building Code Effectiveness Grading Schedule.
- The ISO Mitigation online ISO’s Public Protection website at <https://www.isomitigation.com/ppc/>.
- The National Weather Service Storm Ready website at <http://www.stormready.noaa.gov/index.html>.
- The National Firewise Communities website at <http://firewise.org/>.

**Self-Assessment of Capability**

The table below provides an approximate measure of the Village of Corfu’s capability to work in a hazard-mitigation capacity and/or effectively implement hazard mitigation strategies to reduce hazard vulnerabilities.



**Table 9.12-9. Self-Assessment Capability for the Municipality**

Area	Degree of Hazard Mitigation Capability		
	Limited (If limited, what are your obstacles?)*	Moderate	High
Planning and regulatory capability	X – The village requires guidance on issues relating to hazard mitigation	-	-
Administrative and technical capability	X – The village requires guidance on issues relating to hazard mitigation	-	-
Fiscal capability	X – The village requires guidance on issues relating to hazard mitigation	-	-
Community political capability	X – The village requires guidance on issues relating to hazard mitigation	-	-
Community resiliency capability	X – The village requires guidance on issues relating to hazard mitigation	-	-
Capability to integrate mitigation into municipal processes and activities	X – The village requires guidance on issues relating to hazard mitigation	-	-

**National Flood Insurance Program**

This section provides specific information on the management and regulation of the regulatory floodplain.

**NFIP Floodplain Administrator (FPA)**

Jenny Eck, Deputy Mayor

**Flood Vulnerability Summary**

The Village of Corfu has not had an issue with flooding issues in the past. The village has recently updated the stormwater system.

The following table summarizes the NFIP statistics for the Village of Corfu.

**Table 9.12-10. NFIP Summary**

Municipality	# Policies (1)	# Claims (Losses) (1)	Total Loss Payments (2)	# Rep. Loss Prop. (1)	# Severe Rep. Loss Prop. (1)	# Policies in 100- year Boundary (3)
Village of Corfu	3	0	\$0	0	0	3

Source: FEMA 2018

Notes: Policies, claims, repetitive loss, and severe repetitive loss statistics provided by FEMA Region 2, and current as of February 28, 2018. The total number of repetitive loss properties does not include severe repetitive loss properties

**Resources**

The Village of Corfu contracts with staff as needed for floodplain administration to support the floodplain administrator. NFIP administration services and functions include permit review and inspections. The village does not conduct outreach on flood hazard or risk. The floodplain administrator does not feel there are any barriers to running an effective floodplain management program but noted they could use additional training. As such, the floodplain administrator would consider attending continuing education and/or certification training on floodplain management if it were offered in the county.

**Compliance History**

The Village of Corfu is in good standing in the NFIP. The village has not had a compliance audit or CAV.



## Regulatory

The Village of Corfu's flood damage prevention ordinance meets federal minimum requirements. The village has additional local ordinances that support floodplain management and the meeting of NFIP requirements. The village is not a member of the CRS program but would consider attending a CRS seminar if offered locally.

## Integration of Hazard Mitigation into Existing and Future Planning Mechanisms

For a community to succeed in reducing long-term risk, hazard mitigation must be integrated into the day-to-day local government operations. As part of this planning effort, each community was surveyed to obtain a better understanding of their community's progress in plan integration. A summary is provided below. In addition, the community identified specific integration activities that will be incorporated into municipal procedures.

## Planning

The Village of Corfu does not have a Master Plan, Stormwater Management Plan, Re-Development Plan, Growth Plan, Economic Development Plan, Open Space Plan, Watershed/Stream Corridor Management Plan, Local Waterfront Revitalization Plan, Post-Disaster Recovery Plan, or Strategic Recovery Plan. The village follows the state's emergency operations plan.

## Opportunities for Future Integration

The village could develop a master plan that references the County Hazard Mitigation Plan.

## Regulatory and Enforcement (Ordinances)

**Zoning Ordinance:** The purposes of the Village of Corfu Zoning Law is to encourage the most appropriate use of the land throughout the village and to provide for orderly growth and development that will conserve the value of property; to lessen congestion in the streets; to provide adequate light and air; to limit concentrated development to an amount equal to the availability and capacity of public facilities and services; to avoid undue concentration of population; to secure safety from fire, flood, and other dangers; to promote the health, safety, morals and the general welfare of the public.

## Opportunities for Future Integration

The village could update municipal zoning and subdivision ordinances and the site review process to consider natural hazard risk and require developers to take additional actions to mitigate natural hazard risk.

## Operational and Administration

**Planning Board:** The Planning Board is charged with conducting reviews of site plans, special use permits, use variances, and temporary use and structure permits as prescribed in "Village of Corfu Zoning Law." The Planning Board meets at 7:00 pm on the fourth Tuesday of each month in the Village Office conference room.

**Zoning Board:** The Zoning Board is a decision making board with respect to variances to Village Zoning laws. The board is subject village laws and ordinances and laws and building codes of New York State. There are five positions on the Board. Zoning board members are appointed for five year terms. The Board is independent of any reporting relationship to the Mayor or Board of Trustees other than financial matters. To appear before the Village Zoning Board, you should contact the Village Clerk-Treasurer three working days prior to each announced meeting. The Board meets when called together by the chairperson on an as needed basis.

**Maintenance and Sewer Department:** The Maintenance and Sewer Department is responsible for stream management and stormwater management activities within the village.



### Opportunities for Future Integration

The village could hold trainings for staff on hazard mitigation.

### Funding

The village budget does not include line items for mitigation projects and has not applied for grant funding for mitigation related projects.

### Opportunities for Future Integration

The village could allocate municipal budget for mitigation projects and supplement funding through applying for grant funding.

### Education and Outreach

The village operates a website (<http://www.corfuny.com/index.htm>) that includes village news and other community information.

### Opportunities for Future Integration

The village could develop education and outreach programs on hazards and hazard mitigation. The village could host much of the developed information on the village website.

### Sheltering, Evacuation, and Temporary Housing

Temporary housing, evacuation routes, and sheltering measures must be in place and available for public awareness to protect residents, mitigate risk, and relocate residents, if necessary, to maintain post-disaster social and economic stability.

### Temporary and Permanent Housing

The Village of Corfu has identified the following site for the placement of temporary housing for residents displaced by a disaster:

- Pembroke Communications Center: 116 East Main Street. The Communications Center has a capacity of 280.

The village has not identified potential sites suitable for relocating houses of the floodplain and/or building new homes once properties in the floodplain are acquired. Development of new houses would follow the county's growth strategy.

### Evacuation and Sheltering Needs

The Village of Corfu does not have a designated emergency shelter. The village has two major routes that meet in the village. Route 77, also known as Alleghany Road, and Route 33, also known as Genesee Street, can be used to evacuation towards bigger cities:

- East: Batavia, Rochester
- West: Buffalo
- North: Medina
- South: Warsaw



### 9.12.6 Mitigation Strategy and Prioritization

---

This section discusses past mitigations actions and status, describes proposed hazard mitigation initiatives, and prioritization.

#### Past Mitigation Initiative Status

---

The 2008 Plan identified general mitigation actions for all municipalities throughout Genesee County. The village reviewed the actions and reported no progress on any actions. The village decided not to include any actions in the 2019 Plan update as they did not pertain to the village.

#### Completed Mitigation Initiatives not Identified in the Previous Mitigation Strategy

---

The Village of Corfu has performed ongoing maintenance projects to reduce the impact of flooding but has not identified specific mitigation projects/activities that have been completed but were not identified in the previous mitigation strategy in the 2008 Plan.

#### Proposed Hazard Mitigation Initiatives for the Plan Update

---

Table 9.12-11 summarizes the comprehensive-range of specific mitigation initiatives the Village of Corfu would like to pursue in the future to reduce the effects of hazards. Some of these initiatives may be previous actions carried forward for this plan update. These initiatives are dependent upon available funding (grants and local match availability) and may be modified or omitted at any time based on the occurrence of new hazard events and changes in municipal priorities. Both the four FEMA mitigation action categories and the six CRS mitigation action categories are listed in the table below to further demonstrate the wide-range of activities and mitigation measures selected.

As discussed in Section 6, 14 evaluation/prioritization criteria are used to complete the prioritization of mitigation initiatives. For each new mitigation action, a numeric rank is assigned (-1, 0, or 1) for each of the 14 evaluation criteria to assist with prioritizing your actions as ‘High’, ‘Medium’, or ‘Low.’ The table below summarizes the evaluation of each mitigation initiative, listed by Action Number.

Table 9.12-12 provides a summary of the prioritization of all proposed mitigation initiatives for the plan update.



Table 9.12-11. Proposed Hazard Mitigation Initiatives

Project Number	Project Name				Priority	
V. Corfu-1	Project Name	Clear Murder Creek of log jams and debris.			Priority	High
	Description of Problem	Murder Creek has filled with debris that may create log jams and ice jams that can cause flooding.			Lead & Support Agencies	Maintenance Department
	Description of Solution	The Village of Corfu Maintenance Department will clear Murder Creek of potential log jams and other debris. The village will monitor the Creek for additional areas of debris after the clearing.			Estimated Benefits	Removal of log jams, lowering flood risk.
	Hazard(s) Mitigated	Flood, Severe Storm	Estimated Timeline	6 months	Estimated Cost	\$15,000-\$20,000
	Mitigation Category	NSP	Critical Facility	<input type="checkbox"/> Yes <input checked="" type="checkbox"/> No	Potential Funding Sources	Municipal budget, HMGP, PDM
CRS Category	NR	EHP Issues	Permitting	Goals Met	1, 2	
<b>Project 2</b>						
V. Corfu-2	Project Name	Develop special needs registry program.			Priority	High
	Description of Problem	The village has an aging population. Due to being within the New York snowbelt, residents are often isolated and without power for long amounts of time during snow storms and other hazard events. Elderly and special needs residents are vulnerable during these events and may need assistance or safety check ins. In the event of evacuation, elderly residents and those with special needs may acquire additional assistance to evacuate.			Lead & Support Agencies	Deputy Mayor
	Description of Solution	The village will develop a special needs registry program. This program will allow residents with disabilities or access and functional needs and their families, friends, caregivers and associates an opportunity to provide information to the village so emergency responders can better plan to serve them in a disaster or other emergency.  The village will have residents sign up for the program when they come into the village offices to pay taxes each year. Information will be privately stored by the village and updated annually to ensure the database is kept up to date. During disaster events, the village will share this information with relevant state and federal authorities to provide additional assistance.			Estimated Benefits	Elderly and special needs residents will be cared for during hazard events and evacuations.
	Hazard(s) Mitigated	All Hazards	Estimated Timeline	1 year	Estimated Cost	\$5,000
	Mitigation Category	LPR	Critical Facility	<input type="checkbox"/> Yes <input checked="" type="checkbox"/> No	Potential Funding Sources	Municipal budget, HMGP, PDM
CRS Category	ES	EHP Issues	None	Goals Met	1, 3	
<b>Project 3</b>						
V. Corfu-3	Project Name	Work with Monroe County to protect the 31037017500000-Corfu Well to the 500-year flood level.			Priority	Medium
	Description of Problem	The facility is in the 100-year floodplain. The facility is owned by Monroe County and the village does not have jurisdiction over the facility.			Lead & Support Agencies	Village floodplain administrator, facilities manager
	Description of Solution	The village will contact the facilities manager and discuss options for protecting the facility to the 500-year level			Estimated Benefits	Provide outreach to the property owner and informing them of potential flood damage and possible solutions.
	Hazard(s) Mitigated	Flood	Estimated Timeline	Within 6 months	Estimated Cost	<\$100







**Table 9.12-11. Proposed Hazard Mitigation Initiatives**

	Mitigation Category	EAP	Critical Facility	<input checked="" type="checkbox"/> Yes	Potential Funding Sources	Municipal budget
	CRS Category	PI	EHP Issues	None	Goals Met	1, 2, 3
<b>Project Number</b>	<b>Project Name</b>	Training for Floodplain Administrator.			<b>Priority</b>	High
V. Corfu-4	<b>Description of Problem</b>	The Village Floodplain Administrator requires training.			<b>Lead &amp; Support Agencies</b>	Floodplain administrator
	<b>Description of Solution</b>	The village will support sending the Floodplain Administrator to available trainings from FEMA and NYS.			<b>Estimated Benefits</b>	FPA trained to fulfill job duties.
	<b>Hazard(s) Mitigated</b>	Flood	<b>Estimated Timeline</b>	Within 1 year	<b>Estimated Cost</b>	<\$100
	<b>Mitigation Category</b>	LPR	<b>Critical Facility</b>	<input type="checkbox"/> Yes <input checked="" type="checkbox"/> No	<b>Potential Funding Sources</b>	Municipal budget
	<b>CRS Category</b>	PR	<b>EHP Issues</b>	None	<b>Goals Met</b>	1, 3
<b>Project Number</b>	<b>Project Name</b>	Update the Flood Damage Prevention Ordinance.			<b>Priority</b>	High
V. Corfu-5	<b>Description of Problem</b>	The Village of Corfu's Flood Damage Prevention Ordinance does not include the state's 2-foot freeboard requirement			<b>Lead &amp; Support Agencies</b>	Village floodplain administrator
	<b>Description of Solution</b>	The village will update the Flood Damage Prevention Ordinance to include the 2-foot freeboard requirement.			<b>Estimated Benefits</b>	Ordinance meets state standards.
	<b>Hazard(s) Mitigated</b>	Flood	<b>Estimated Timeline</b>	Within 6 months	<b>Estimated Cost</b>	<\$100
	<b>Mitigation Category</b>	LPR	<b>Critical Facility</b>	<input checked="" type="checkbox"/> Yes <input type="checkbox"/> No	<b>Potential Funding Sources</b>	Municipal budget
	<b>CRS Category</b>	PR	<b>EHP Issues</b>	None	<b>Goals Met</b>	1, 3

**Notes:**

Not all acronyms and abbreviations defined below are included in the table.

\*Does this mitigation initiative reduce the effects of hazards on new and/or existing buildings and/or infrastructure? Not applicable (N/A) is inserted if this does not apply.

Acronyms and Abbreviations:

CAV Community Assistance Visit  
 CRS Community Rating System  
 DPW Department of Public Works  
 FEMA Federal Emergency Management Agency  
 FPA Floodplain Administrator  
 HMA Hazard Mitigation Assistance  
 N/A Not applicable  
 NFIP National Flood Insurance Program  
 OEM Office of Emergency Management

Potential FEMA HMA Funding Sources:

FMA Flood Mitigation Assistance Grant Program  
 HMGP Hazard Mitigation Grant Program  
 PDM Pre-Disaster Mitigation Grant Program  
 RFC Repetitive Flood Claims Grant Program  
 (discontinued in 2015)  
 SRL Severe Repetitive Loss Grant Program  
 (discontinued in 2015)

Timeline:

Short 1 to 5 years  
 Long Term 5 years or greater  
 OG On-going program  
 DOF Depending on funding





Costs:

Where actual project costs have been reasonably estimated:

- Low < \$10,000
- Medium \$10,000 to \$100,000
- High > \$100,000

Where actual project costs cannot reasonably be established at this time:

- Low Possible to fund under existing budget. Project is part of, or can be part of an existing on-going program.
- Medium Could budget for under existing work plan, but would require a reapportionment of the budget or a budget amendment, or the cost of the project would have to be spread over multiple years.
- High Would require an increase in revenue via an alternative source (i.e., bonds, grants, fee increases) to implement. Existing funding levels are not adequate to cover the costs of the proposed project.

Benefits:

Where possible, an estimate of project benefits (per FEMA's benefit calculation methodology) has been evaluated against the project costs, and is presented as:

- Low= < \$10,000
- Medium \$10,000 to \$100,000
- High > \$100,000

Where numerical project benefits cannot reasonably be established at this time:

- Low Long-term benefits of the project are difficult to quantify in the short term.
- Medium Project will have a long-term impact on the reduction of risk exposure to life and property, or project will provide an immediate reduction in the risk exposure to property.
- High Project will have an immediate impact on the reduction of risk exposure to life and property.

Mitigation Category:

- Local Plans and Regulations (LPR) – These actions include government authorities, policies or codes that influence the way land and buildings are being developed and built.
- Structure and Infrastructure Project (SIP) - These actions involve modifying existing structures and infrastructure to protect them from a hazard or remove them from a hazard area. This could apply to public or private structures as well as critical facilities and infrastructure. This type of action also involves projects to construct manmade structures to reduce the impact of hazards.
- Natural Systems Protection (NSP) – These are actions that minimize damage and losses, and also preserve or restore the functions of natural systems.
- Education and Awareness Programs (EAP) – These are actions to inform and educate citizens, elected officials, and property owners about hazards and potential ways to mitigate them. These actions may also include participation in national programs, such as StormReady and Firewise Communities.

CRS Category:

- Preventative Measures (PR) - Government, administrative or regulatory actions, or processes that influence the way land and buildings are developed and built. Examples include planning and zoning, floodplain local laws, capital improvement programs, open space preservation, and storm water management regulations.
- Property Protection (PP) - These actions include public activities to reduce hazard losses or actions that involve (1) modification of existing buildings or structures to protect them from a hazard or (2) removal of the structures from the hazard area. Examples include acquisition, elevation, relocation, structural retrofits, storm shutters, and shatter-resistant glass.
- Public Information (PI) - Actions to inform and educate citizens, elected officials, and property owners about hazards and potential ways to mitigate them. Such actions include outreach projects, real estate disclosure, hazard information centers, and educational programs for school-age children and adults.
- Natural Resource Protection (NR) - Actions that minimize hazard loss and also preserve or restore the functions of natural systems. These actions include sediment and erosion control, stream corridor restoration, watershed management, forest and vegetation management, and wetland restoration and preservation.
- Structural Flood Control Projects (SP) - Actions that involve the construction of structures to reduce the impact of a hazard. Such structures include dams, setback levees, floodwalls, retaining walls, and safe rooms.
- Emergency Services (ES) - Actions that protect people and property during and immediately following a disaster or hazard event. Services include warning systems, emergency response services, and the protection of essential facilities.

Critical Facility:

- Yes  - Critical Facility located in 1% floodplain





**Table 9.12-12. Summary of Prioritization of Actions**

Mitigation Action/Project Number	Mitigation Action/Initiative	Life Safety	Property Protection	Cost-Effectiveness	Technical	Political	Legal	Fiscal	Environmental	Social	Administrative	Multi-Hazard	Timeline	Agency Champion	Other Community	Total	High / Medium / Low
V. Corfu-1	Clear Murder Creek of log jams and debris	0	1	1	1	1	0	0	1	0	1	1	0	1	1	9	High
V. Corfu-2	Develop special needs registry program	1	0	1	1	1	1	0	1	1	1	1	1	1	1	12	High
V. Corfu-3	Work with Monroe County to protect the 31037017500000-Corfu Well to the 500-year flood level	0	1	1	0	1	0	1	1	1	0	0	1	1	0	8	Medium
V. Corfu-4	Training for Floodplain Administrator	1	1	1	1	1	1	1	1	1	1	0	1	1	1	13	High
V. Corfu-5	Update the Flood Damage Prevention Ordinance	0	1	1	1	1	1	1	1	1	1	1	1	1	1	13	High

Note: Refer to Section 6, which conveys guidance on prioritizing mitigation actions. Low (0-4), Medium (5-8), High (9-14).



### **9.12.7 Future Needs To Better Understand Risk/Vulnerability**

---

None at this time.

### **9.12.8 Staff and Local Stakeholder Involvement in Annex Development**

---

The Village of Corfu followed the planning process described in Section 3 (Planning Process). This annex was developed over the course of several months with input from many village departments, including: Deputy Mayor and the Board of Trustees. The Deputy Mayor represented the community on the Genesee County Hazard Mitigation Plan Planning Partnership and supported the local planning process requirements by securing input from persons with specific knowledge to enhance the plan. All departments were asked to contribute to the annex development through reviewing and contributing to the capability assessment, reporting on the status of previously identified actions, and participating in action identification and prioritization.

Additional documentation on the municipality's planning process through Planning Partnership meetings is included in Section 3 (Planning Process) and Appendix B (Meeting Documentation).

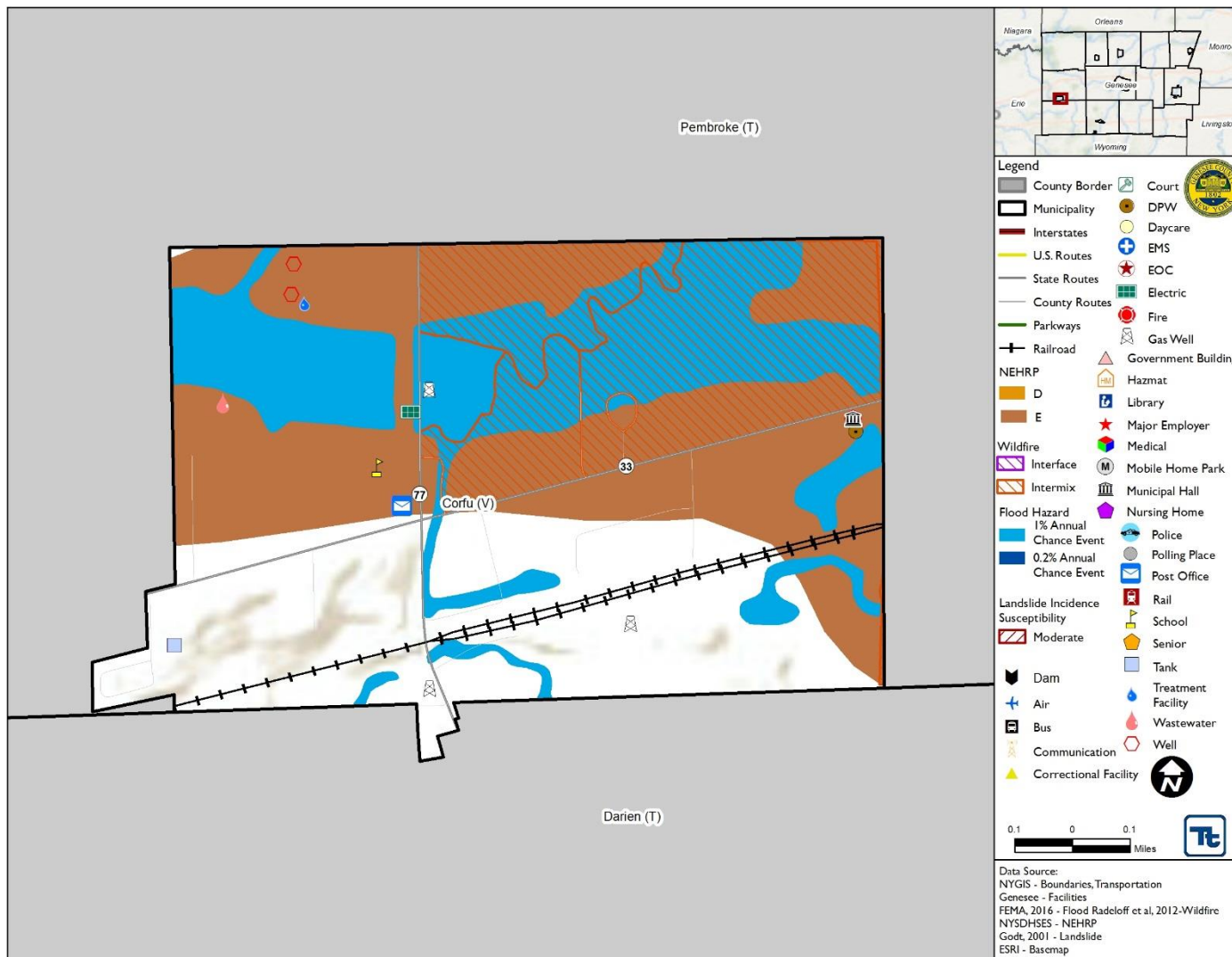
### **9.12.9 Hazard Area Extent and Location**

---

Hazard area extent and location maps have been generated for the Village of Corfu that illustrate the probable areas impacted within the municipality. These maps are based on the best available data at the time of the preparation of this plan and are adequate for planning purposes. Maps have only been generated for those hazards that can be clearly identified using mapping techniques and technologies and for which the Village of Corfu has significant exposure. A map of the Village of Corfu hazard area extent and location is provided on the following page. This map indicates the location of the regulatory floodplain, as well as identified critical facilities within the municipality.



Figure 9.12-2. Village of Corfu Hazard Area Extent and Location Map





Village of Corfu Action Worksheet			
<b>Project Name:</b>	Clear Murder Creek of log jams and debris.		
<b>Project Number:</b>	V. Corfu-1		
<b>Risk / Vulnerability</b>			
<b>Hazard(s) of Concern:</b>	Flood, Severe Storm		
<b>Description of the Problem:</b>	Murder Creek has filled with debris that may create log jams and ice jams that can cause flooding.		
<b>Action or Project Intended for Implementation</b>			
<b>Description of the Solution:</b>	The Village of Corfu Maintenance Department will clear Murder Creek of potential log jams and other debris. The village will monitor the Creek for additional areas of debris after the clearing.		
<b>Is this project related to a Critical Facility?</b>	Yes <input type="checkbox"/>	No <input checked="" type="checkbox"/>	
<b>Is this project related to a Critical Facility located within the 100-year floodplain?</b>	Yes <input type="checkbox"/>	No <input checked="" type="checkbox"/>	
(If yes, this project must intend to protect the 500-year flood event or the actual worse case damage scenario, whichever is greater)			
<b>Level of Protection:</b>	Log jam and ice jam risk reduced.	<b>Estimated Benefits (losses avoided):</b>	Removal of log jams, lowering flood risk and debris on private property.
<b>Useful Life:</b>	5 years	<b>Goals Met:</b>	1, 2
<b>Estimated Cost:</b>	\$15,000-\$20,000	<b>Mitigation Action Type:</b>	Natural Systems Protection
<b>Plan for Implementation</b>			
<b>Prioritization:</b>	High	<b>Desired Timeframe for Implementation:</b>	3-5 years
<b>Estimated Time Required for Project Implementation:</b>	1 month	<b>Potential Funding Sources:</b>	Village budget, HMGP, PDM
<b>Responsible Organization:</b>	Maintenance Department	<b>Local Planning Mechanisms to be Used in Implementation if any:</b>	
<b>Three Alternatives Considered (including No Action)</b>			
<b>Alternatives:</b>	<b>Action</b>	<b>Estimated Cost</b>	<b>Evaluation</b>
	No Action	\$0	Problem continues.
	Clear vegetation that is in danger of falling into Creek.	\$5,000	Current debris and logs still in place.
	Widen Murder Creek to prevent debris from blocking creek and causing flooding.	N/A	Not technically feasible. Not enough space in sections, cost too high, unlikely to receive NYS DEC permission.
<b>Progress Report (for plan maintenance)</b>			
<b>Date of Status Report:</b>			
<b>Report of Progress:</b>			
<b>Update Evaluation of the Problem and/or Solution:</b>			



Action Worksheet		
<b>Project Name:</b>	Clear Murder Creek of log jams and debris.	
<b>Project Number:</b>	V. Corfu-1	
Criteria	Numeric Rank (-1, 0, 1)	Provide brief rationale for numeric rank when appropriate
Life Safety	0	
Property Protection	1	The project will protect nearby buildings and infrastructure from flooding.
Cost-Effectiveness	1	
Technical	1	
Political	1	
Legal	1	The village may permits from NYS DEC to complete the work.
Fiscal	0	The project will require grant funding support.
Environmental	1	Project will restore degraded portions of Murder Creek.
Social	0	
Administrative	1	
Multi-Hazard	1	Flooding, Severe Storm
Timeline	0	
Agency Champion	1	Maintenance Department
Other Community Objectives	1	
<b>Total</b>	9	
<b>Priority (High/Med/Low)</b>	High	





Village of Corfu Action Worksheet			
<b>Project Name:</b>	Develop special needs registry program.		
<b>Project Number:</b>	V. Corfu-2		
<b>Risk / Vulnerability</b>			
<b>Hazard(s) of Concern:</b>	All Hazards		
<b>Description of the Problem:</b>	The Village of Corfu has an aging population, including many veterans. Due to being within the New York snowbelt, residents are often isolated and without power for long amounts of time during snow storms and other hazard events. Elderly and special needs residents are vulnerable during these events and might need assistance or safety check ins. In the event of evacuation, elderly residents and those with special needs might acquire additional assistance to evacuate.		
<b>Action or Project Intended for Implementation</b>			
<b>Description of the Solution:</b>	<p>The Village of Corfu will develop a special needs registry program. This program will allow residents with disabilities or access and functional needs and their families, friends, caregivers and associates an opportunity to provide information to the village so emergency responders can better plan to serve them in a disaster or other emergency.</p> <p>The village will have residents sign up for the program when they come into the village offices to pay taxes each year. Information will be privately stored by the village and updated annually to ensure the database is kept up to date. During disaster events, the village will share this information with relevant state and federal authorities to provide additional assistance.</p>		
<b>Is this project related to a Critical Facility?</b>	Yes <input type="checkbox"/>	No <input checked="" type="checkbox"/>	
<b>Is this project related to a Critical Facility located within the 100-year floodplain?</b>	Yes <input type="checkbox"/>	No <input checked="" type="checkbox"/>	
(If yes, this project must intend to protect the 500-year flood event or the actual worse case damage scenario, whichever is greater)			
<b>Level of Protection:</b>	Action by emergency responders dependent on hazard event.	<b>Estimated Benefits (losses avoided):</b>	Elderly and special needs residents will be cared for during hazard events and evacuations.
<b>Useful Life:</b>	1 year,	<b>Goals Met:</b>	1, 3
<b>Estimated Cost:</b>	\$5,000	<b>Mitigation Action Type:</b>	Local Plans and Regulations.
<b>Plan for Implementation</b>			
<b>Prioritization:</b>	High	<b>Desired Timeframe for Implementation:</b>	Within 1 year
<b>Estimated Time Required for Project Implementation:</b>	1 year, updated annually once established	<b>Potential Funding Sources:</b>	Village budget, HMGP, PDM
<b>Responsible Organization:</b>	Deputy Mayor	<b>Local Planning Mechanisms to be Used in Implementation if any:</b>	
<b>Three Alternatives Considered (including No Action)</b>			
<b>Alternatives:</b>	<b>Action</b>	<b>Estimated Cost</b>	<b>Evaluation</b>
	No Action	\$0	Problem continues.
	Outreach to residents to encourage emergency contacts with friends/family.	\$2,000	Village authorities lack information to respond if necessary.
	Encourage local non-profits to develop program.	<\$100	Not reliable action. Non-profits may not be willing/capable of sustaining program.
<b>Progress Report (for plan maintenance)</b>			
<b>Date of Status Report:</b>			
<b>Report of Progress:</b>			
<b>Update Evaluation of the Problem and/or Solution:</b>			





Action Worksheet		
<b>Project Name:</b>	Develop special needs registry program	
<b>Project Number:</b>	V. Corfu-2	
Criteria	Numeric Rank (-1, 0, 1)	Provide brief rationale for numeric rank when appropriate
<b>Life Safety</b>	1	Elderly and special needs residents attended to during hazard events.
<b>Property Protection</b>	0	
<b>Cost-Effectiveness</b>	1	
<b>Technical</b>	1	
<b>Political</b>	1	There is public support for the project.
<b>Legal</b>	1	The village has the legal authority to complete the project.
<b>Fiscal</b>	0	The project will require funding assistance for initial establishment.
<b>Environmental</b>	1	
<b>Social</b>	1	
<b>Administrative</b>	1	
<b>Multi-Hazard</b>	1	All hazards
<b>Timeline</b>	1	1 year
<b>Agency Champion</b>	1	Deputy Mayor
<b>Other Community Objectives</b>	1	Care of elderly population
<b>Total</b>	12	
<b>Priority (High/Med/Low)</b>	High	