

# MAJOR SITE PLAN & SPECIAL PERMIT LARGE SCALE SOLAR ARRAY

PARCEL NUMBER 40-0-79  
GREENWICH ROAD  
TOWN OF WARE  
COUNTY OF HAMPSHIRE, MASSACHUSETTS

## TOWN OF WARE

ZONE - RR  
AREA -60,000 S.F.  
FRONTAGE - 150'  
FRONT - 25 FT. (SOLAR)  
SIDE - 25 FT. (SOLAR)  
REAR - 25 FT. (SOLAR)  
50 FT. MIN BUFFER TO RESIDENTIAL USE FOR SOLAR FIELD

## RECORD PARCELS (ASSESSORS)

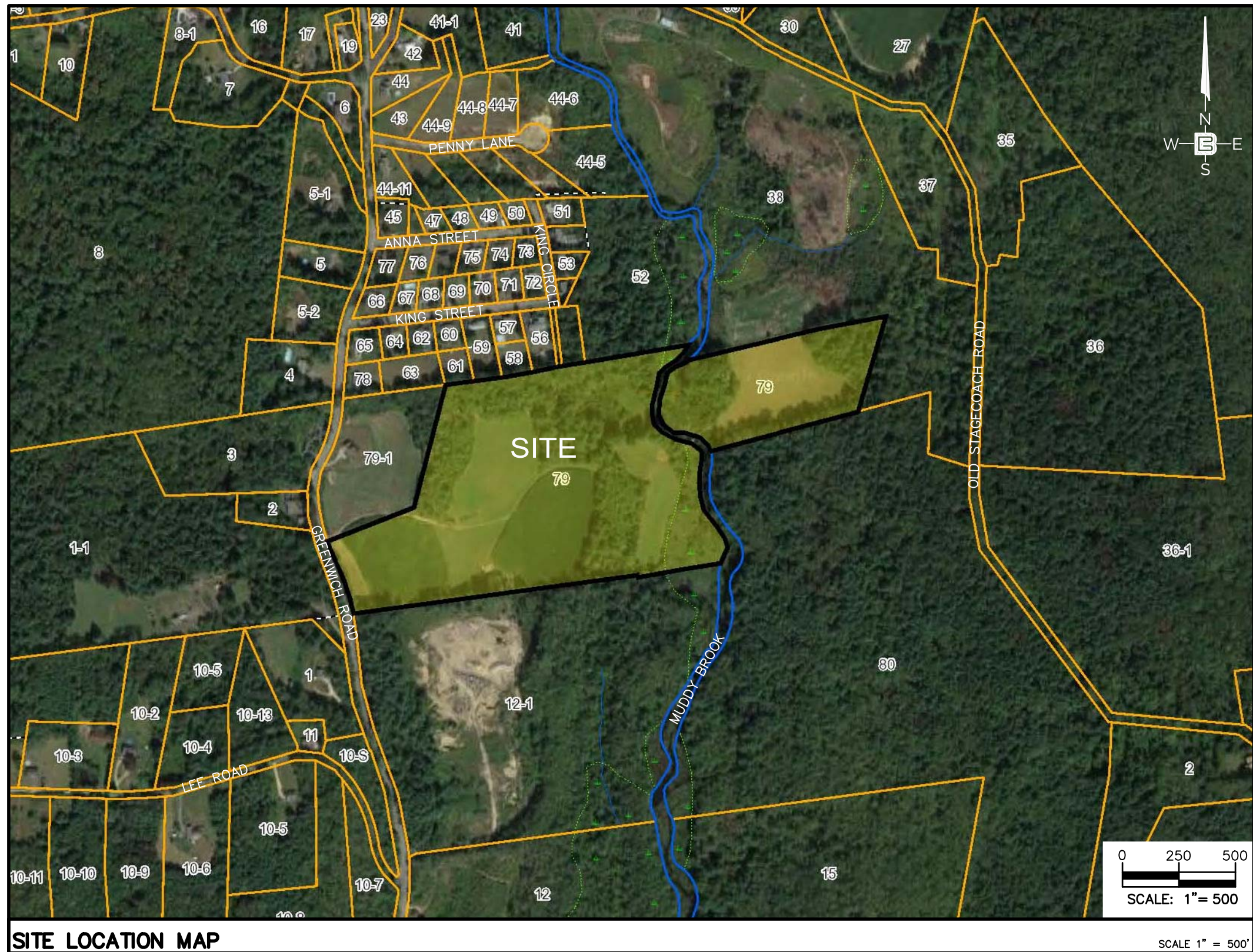
WARE 40-0-79

## RECORD OWNERS

EDWARD COUTURE  
PO BOX 1041  
WARE, MA 01082  
DB.9018 PG.321

## DEVELOPER/APPLICANT

WARE SOLAR IV, LLC  
c/o MELINK SOLAR DEVELOPMENT  
276 N. FOREST AVE. NE  
MARIETTA, GA 30060



SITE LOCATION MAP

0 250 500  
SCALE: 1" = 500'

## TOWN OF WARE PLANNING BOARD


DATE: \_\_\_\_\_

DRAWING LIST			
DWG. #	DRAWING TITLE	DATED/ LAST REVISED	REV. #
C1.1	COVER SHEET	02-04-21	6
C1.2	EXISTING CONDITIONS PLAN	01-20-21	1
C1.3	OVERALL SITE PLAN	02-04-21	4
C2.1	SOIL EROSION & SEDIMENT CONTROL PLAN	01-20-21	4
C2.2	SITE PLAN	01-29-21	5
C2.3	GRADING PLAN	01-20-21	4
C2.4	VEHICLE CIRCULATION PLAN	10-21-19	0
C3.1	SITE & DRAINAGE DETAILS	01-20-21	3
C3.2	SITE DETAILS -- 2	10-21-19	0
C3.3	SOIL EROSION & SEDIMENT CONTROL AND LANDSCAPE DETAILS	01-20-21	1

39 ELM STREET  
SOUTHBIDGE, MA 01550  
P 508.765.0195  
F 508.765.0193  
www.bertinengineering.com

**BERTIN**  
ENGINEERING



CIVIL • SURVEYING • TRAFFIC • STRUCTURAL • ENVIRONMENTAL • MECHANICAL • LANDSCAPE

CALISTO J. BERTIN, P.E.

PROFESSIONAL ENGINEER

CT LIC. NO. 12950 NJ LIC. NO. 28845  
MA LIC. NO. 40595 NY LIC. NO. 60022  
NH LIC. NO. 9368 RI LIC. NO. 6694

*[Signature]*

BRUCE A. FITZBACK, P.L.S.

PROFESSIONAL LAND SURVEYOR

MA LIC. NO. 37731  
CT LIC. NO. 16970

NOT VALID FOR RECORD

NO.	DATE	REVISION	E.G.	E.G.	E.G.	E.G.	E.G.
6	02-04-21	REVISION TO DRAWING LIST	E.G.	E.G.	E.G.	E.G.	E.G.
5	1-29-21	REVISION TO DRAWING LIST	E.G.	E.G.	E.G.	E.G.	E.G.
4	1-29-21	REVISION TO DRAWING LIST	E.G.	E.G.	E.G.	E.G.	E.G.
3	1-11-21	REVISION TO DRAWING LIST	E.G.	E.G.	E.G.	E.G.	E.G.
2	11-04-20	REVISION TO DRAWING LIST	E.G.	E.G.	E.G.	E.G.	E.G.
1	11-01-19	REVISION TO DRAWING LIST	E.G.	E.G.	E.G.	E.G.	E.G.

DRAWING TITLE

COVER SHEET

PROJECT

**LARGE SCALE  
SOLAR ARRAY**

PARCEL NUMBER 40-0-79  
179 GREENWICH ROAD  
TOWN OF WARE  
HAMPSHIRE COUNTY, MASSACHUSETTS

CLIENT

WARE SOLAR IV LLC  
276 N. FOREST AVE. NE  
MARIETTA, GA 30060

CERTIFICATE OF AUTHORIZATION  
24GA28068900 / 21MH00002800

DRAWN BY J.A.S. CHECKED BY C.J.B.

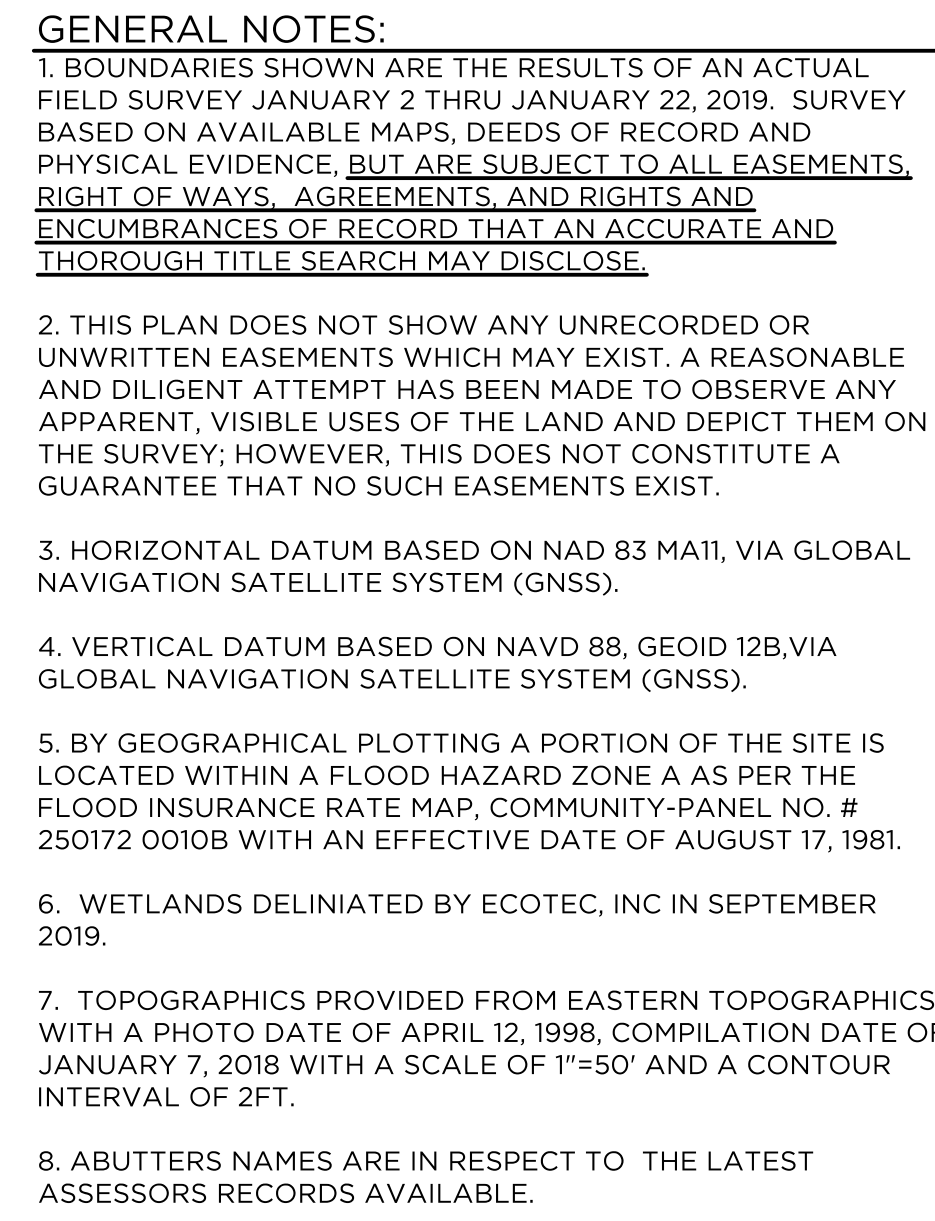
SCALE AS SHOWN PROJECT NO. 18M-215

DATE 10-21-19 REVISION NO. 6

DRAWING NO.

**C1.1**






**TAX MAP REFERENCES:**  
WARE ASSESSORS  
TAX MAP 40, LOT 79

**RECORD OWNER:**  
EDWARD COUTURE  
PO BOX 1041  
WARE, MA 01082  
DB.9018 PG.321

**PLAN REFERENCES:**  
(HAMPSHIRE COUNTY REGISTRY OF DEEDS)  
PLAN BOOK 41 PLAN 66  
PLAN BOOK 67 PLAN 8  
PLAN BOOK 76 PLAN 2  
PLAN BOOK 107 PLAN 95  
PLAN BOOK 109 PLAN 54  
PLAN BOOK 136 PLAN 29  
PLAN BOOK 178 PLAN 175  
PLAN BOOK 189 PLAN 67  
PLAN BOOK 204 PLAN 25  
PLAN BOOK 212 PLAN 39

**TOWN OF WARE ZONING:**  
ZONE - RR (RURAL RESIDENTIAL)  
AREA - 60,000 S.F.  
FRONTAGE - 150 FT.  
FRONT - 30 FT.  
SIDE - 30 FT.  
REAR - 40 FT.

**GRAPHIC SCALE**



( IN FEET )  
1 inch = 100 ft.

[illegible]


PROJECT  
**LARGE SCALE  
SOLAR ARRAY**  
PARCEL NUMBER 40-0-79  
179 GREENWICH ROAD  
TOWN OF WARE  
HAMPSHIRE COUNTY, MASSACHUSETTS

CERTIFICATE OF AUTHORIZATION 24GA28068900 / 21MH00002800	
DRAWN BY J.A.S.	CHECKED BY C.J.B.
SCALE 1" = 100'	PROJECT NO. 18M-215
DATE 10-21-19	REVISION NO. 1

## C1.2





<b>CALISTO J. BERTIN, P.E.</b> PROFESSIONAL ENGINEER CT LIC. NO. 12950      NJ LIC. NO. 28845 MA LIC. NO. 40595      NY LIC. NO. 60022 NH LIC. NO. 9368      RI LIC. NO. 6694 	
<b>BRUCE A. FITZBACK, P.L.S.</b> PROFESSIONAL LAND SURVEYOR MA LIC. NO. 37731 CT LIC. NO. 16970	

[illegible]

DRAWING TITLE

OVERALL  
SITE PLAN

PROJECT

**LARGE SCALE  
SOLAR ARRAY**

PARCEL NUMBER 40-0-79  
179 GREENWICH ROAD  
TOWN OF WARE  
HAMPSHIRE COUNTY, MASSACHUSETTS

---

CLIENT

**WARE SOLAR IV LLC**  
276 N. FOREST AVE. NE  
MARIETTA, GA 30060

CERTIFICATE OF AUTHORIZATION 24GA28068900 / 21MH00002800	
DRAWN BY J.A.S.	CHECKED BY C.J.B.
SCALE 1" = 100'	PROJECT NO. 18M-215
DATE 10-21-19	REVISION NO. 4

### C1.3

Bertin Engineering Associates, Inc. \\192.168.16.23\BE Job Files\2018\18M-215\Design\02 - Civil\CADD\dwg\ 18M-215-PL.dwg Feb 04, 2021 - 8:23am elioq

### LEGEND

- WL— SOLAR PANEL RACK  
—50'BL— 50 FT WETLANDS BUFFER LINE  
—100'BL— 100 FT WETLANDS BUFFER LINE

## AREAS

FENCED	6.2 A.C.
TREE REMOVAL	0.01 A.C.
TREE TOPPING	0.321 A.C.

## GENERAL NOTES

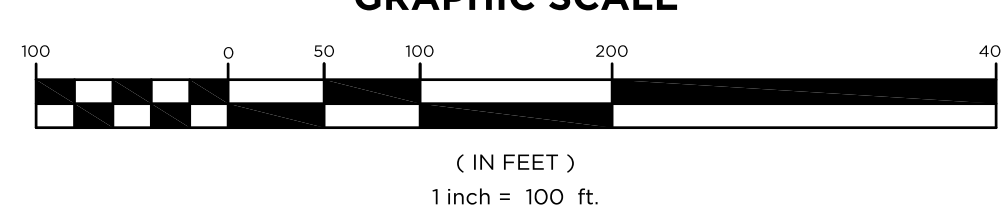
1. ALL FEATURES ARE EXISTING TO REMAIN UNLESS OTHERWISE NOTED.  
PROPOSED FEATURES AS SHOWN IN FULL TONE  
EXISTING FEATURES ARE SHOWN IN HALF TONE  
EXISTING FEATURES TO BE REMOVED ARE SHOWN AS DASHED, OR ARE NOTED.
2. LOCATION OF ALL UNDERGROUND UTILITIES IS APPROXIMATE AND SHOULD BE VERIFIED BEFORE EXCAVATION OR CONSTRUCTION BEGINS. CALL DIG SAFE SYSTEM, INC.: 811 OR 1-888-344-7233.
3. UNLESS OTHERWISE NOTED, MAINTAIN EXISTING YARD GRADES AND SLOPES.
4. ALL UTILITY CONNECTIONS ARE TO BE IN ACCORDANCE WITH LOCAL CODE.
5. THE SITE PLAN(S) SUPERSEDES ALL STANDARD DRAWINGS.
7. ALL WETLANDS DELINEATED BY ECOTEC INC. IN SEPTEMBER 2019.
8. THE FENCING WILL INCORPORATE A DESIGN OF THE EPC'S CHOOSING THAT WILL FACILITATE WILDLIFE MOVEMENT ACROSS THE PROPERTY.
9. ALL GATES TO BE INSTALLED WITH KNOX BOX AND SIGNAGE WITH EMERGENCY CONTACT INFORMATION SUBJECT TO NATIONAL GRID FINAL DESIGN AND CONSTRUCTION.  
KNOX BOX KEY TO BE GIVEN TO LOCAL FIRE DEPARTMENT.
10. NO PESTICIDES OR HERBISIDES ARE TO BE USED DURING CONSTRUCTION OR MAINTENANCE.

## PRELIMINARY SOLAR PANEL OUTPUT

ARRAY	TOTAL
TOTAL NUMBER OF RACKS	66
PANELS PER RACK	54
TOTAL NUMBER OF PANELS	$66 \times 54 = 3,564$
OUTPUT PER PANEL	440W
TOTAL OUTPUT	$440W \times 3,564 = 1,568,160 \text{ W}$ (1.57 MW)

PANEL COUNT AND ARRANGEMENT SUBJECT TO CHANGE BASED ON  
AVAILABILITY AND MANUFACTURER

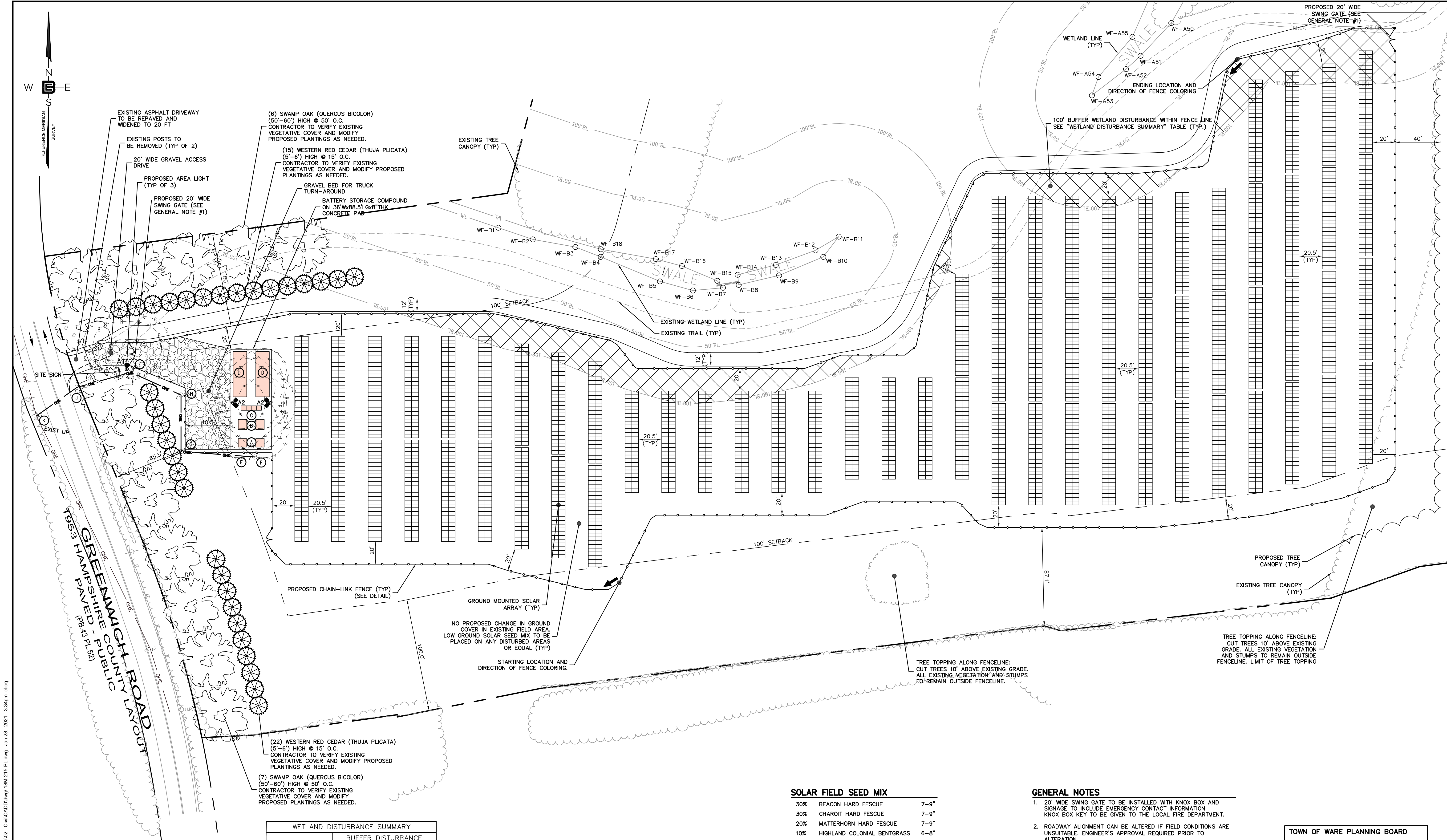
### GRAPHIC SCALE











WETLAND DISTURBANCE SUMMARY			
WETLAND BUFFER	BUFFER DISTURBANCE WITHIN FENCE LINE		
	SQUARE FEET	ACRES	
25' BUFFER LINE	0	0	
50' BUFFER LINE	0	0	
100' BUFFER LINE	19,699	0.45	

LIGHTING SCHEDULE

TYP	SYMBOL	DESCRIPTION	LAMP	LUMENS	MOUNTING/BALLAST	ULF	QTY
A1		1S INDUSTRIES (1) XB8M-FT-LED-SS-NW	(1) LEDs	17994	12 FT., 4000K Neutral White LEDs Forward Throw Distribution	0.85	1
A2		1S INDUSTRIES (2) XB8M-FT-LED-SS-NW-HSS	(2) LEDs	13314	12 FT., 4000K Neutral White LEDs Forward Throw Distribution with House Side Shields	0.85	2

SYMBOL KEY OF PROPOSED ELECTRICAL EQUIPMENT

- (K) UTILITY OWNED JUNCTION POLE/POINT OF INTERCONNECTION ON ASH STREET
- (J) UTILITY OWNED GOAB POLE
- (I) UTILITY OWNED RECLOSER POLE
- (H) POINT OF COMMON COUPLING/BI-DIRECTIONAL METER POLE
- (G) CUSTOMER OWNED GOAB POLE WITH 200A FUSED CUT-OUTS
- (F) CUSTOMER OWNED RISER AND RECLOSER POLE DOWN BOX

SOLAR FIELD SEED MIX

30%	BEACON HARD FESCUE	7-9"
30%	CHARLOT HARD FESCUE	7-9"
20%	MATTERHORN HARD FESCUE	7-9"
10%	HIGHLAND COLONIAL BENTGRASS	6-8"
10%	SHARK CREEPING BENTGRASS	6-8"

SEEDING RATE 150 LBS PER ACRE  
HEIGHT 6-9"

BATTERY STORAGE COMPOUND EQUIPMENT LEGEND

- (A) (2) MV TRANSFORMERS
- (B) (2) INVERTERS WITH RECOMBINERS
- (C) (5) AC/DC CONVERTER
- (D) (2) 12'x40' BATTERY STORAGE CONTAINER
- (E) UNDERGROUND ELECTRIC FROM EQUIPMENT TO UTILITY POLE

GENERAL NOTES

- 20' WIDE SWING GATE TO BE INSTALLED WITH KNOX BOX AND SIGNAGE TO INCLUDE EMERGENCY CONTACT INFORMATION. KNOX BOX KEY TO BE GIVEN TO THE LOCAL FIRE DEPARTMENT.
- ROADWAY ALIGNMENT CAN BE ALTERED IF FIELD CONDITIONS ARE UNSUITABLE. ENGINEER'S APPROVAL REQUIRED PRIOR TO ALTERATION.

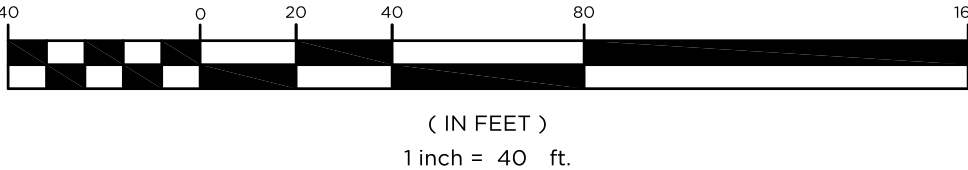
LEGEND

- WETLAND FLAG
- WL— WETLANDS BOUNDARY LINE
- 50'BL— 50 FT WETLANDS BUFFER LINE
- 100'BL— 100 FT WETLANDS BUFFER LINE
- SOLAR PANELS
- GRAVEL DRIVE
- A— 5.0 FOOTCANDLE LINE
- B— 1.0 FOOTCANDLE LINE
- C— 0.5 FOOTCANDLE LINE

TOWN OF WARE PLANNING BOARD


DATE: \_\_\_\_\_

GRAPHIC SCALE



39 ELM STREET  
SOUTHBIDGE, MA 01550  
P 508.765.0195  
F 508.765.0193  
www.bertinengineering.com

B

BERTIN  
ENGINEERING

CIVIL • SURVEYING • TRAFFIC • STRUCTURAL • ENVIRONMENTAL • MECHANICAL • LANDSCAPE

CALISTO J. BERTIN, P.E.  
PROFESSIONAL ENGINEER  
CT LIC. NO. 12950 NJ LIC. NO. 28845  
MA LIC. NO. 40595 NY LIC. NO. 60022  
NH LIC. NO. 9368 RI LIC. NO. 6694

BRUCE A. FITZBACK, P.L.S.  
PROFESSIONAL LAND SURVEYOR  
MA LIC. NO. 37731  
CT LIC. NO. 16970

NO.	DATE	REVISION
5	01-29-21	FENCE COLOR LIMITS ADDED TO PLAN
4	01-20-21	MINOR REVISION TO LANDSCAPING
3	01-11-21	REMOVED SOLAR FIELD LAYOUT.
2	11-04-20	REVISED SOLAR FIELD LAYOUT. ADDED GRASS PATHWAY AND REVISED LANDSCAPING.
1	11-01-19	REVISED SETBACK LINE / FENCE LINE / BUT FENCE. ADDED WETLAND DISTURBANCE TABLE

DRAWING TITLE  
SITE PLAN

PROJECT  
**LARGE SCALE  
SOLAR ARRAY**  
PARCEL NUMBER 40-0-79  
179 GREENWICH ROAD  
TOWN OF WARE  
HAMPSHIRE COUNTY, MASSACHUSETTS  
CLIENT  
**WARE SOLAR IV LLC**  
276 N. FOREST AVE. NE  
MARIETTA, GA 30060  
CERTIFICATE OF AUTHORIZATION  
24GA28068900 / 21MH00002800  
DRAWN BY  
J.A.S.  
CHECKED BY  
C.J.B.  
SCALE  
1" = 40'  
PROJECT NO.  
18M-215  
DATE  
10-21-19  
REVISION NO.  
5  
DRAWING NO.  
**C2.2**



1953 HAMPAVED (PR45 PL82)  
GREENWICH COUNTY  
SHIRE PUBLIC  
ROAD

73.50 LF INFILTRATION TRENCH  
10 330XLHD CULTEC CHAMBERS.  
INSPECTION PORT LOCATED AT  
END OF INFILTRATION TRENCH

TEST PITS PERFORMED BY JTC INC. ON SEPTEMBER 27, 2019

B-2  
OBSERVED GROUNDWATER: N/A  
TEXTURES:  
TOPSOIL: 0-4 INCHES; MEDIUM TO FINE SAND, LITTLE SILT, WITH ROOTS: 0-2 FEET;  
COARSE TO FINE SAND, LITTLE GRAVEL, OCCASIONAL COBBLES AND BOULDERS, VERY  
DENSE, DRY: 2-4 FEET;  
GLACIOFLUVIAL DEPOSIT: 5-7 FEET  
MOTTLING: N/A


B-3  
OBSERVED GROUNDWATER: N/A  
TEXTURES:  
TOPSOIL: 0-4 INCHES; MEDIUM TO FINE SAND, LITTLE SILT, WITH ROOTS: 0-2 FEET;  
COARSE TO FINE SAND, LITTLE GRAVEL, OCCASIONAL COBBLES AND BOULDERS, DENSE  
TO VERY DENSE, DRY: 2-4 FEET;  
GLACIOFLUVIAL DEPOSIT: 5-11 FEET  
MOTTLING: N/A

B-4  
OBSERVED GROUNDWATER: 10 FEET  
ESTIMATED SEASONAL LOW GROUNDWATER  
TEXTURES:  
TOPSOIL: 0-4 INCHES; MEDIUM TO FINE SAND, LITTLE SILT, WITH ROOTS: 0-2 FEET;  
SILT, FINE SILT TRACES, MEDIUM DENSE, MOIST: 2-4 FEET;  
GLACIOFLUVIAL DEPOSIT: 5-17 FEET;  
COARSE TO FINE SAND, SOME GRAVEL, SILT TRACES, FREQUENT COBBLES AND BOULDERS, MEDIUM DENSE, WET: 20-22 FEET  
MOTTLING: N/A

DATE:

**CALISTO J. BERTIN, P.E.**  
PROFESSIONAL ENGINEER

CT LIC. NO. 12950	NJ LIC. NO. 28845
MA LIC. NO. 40595	NY LIC. NO. 60022
NH LIC. NO. 9368	RI LIC. NO. 6694



---

**BRUCE A. FITZBACK, P.L.S.**  
PROFESSIONAL LAND SURVEYOR

MA LIC. NO. 37731
CT LIC. NO. 16970

					E.Q.
					E.Q.
					E.Q.
					E.Q.

# GRADING PLAN

PROJECT  
**LARGE SCALE  
SOLAR ARRAY**  
PARCEL NUMBER 40-0-79  
179 GREENWICH ROAD  
TOWN OF WARE  
HAMPSHIRE COUNTY, MASSACHUSETTS  
CLIENT  
**WARE SOLAR IV LLC**  
276 N. FOREST AVE. NE  
MARIETTA, GA 30060

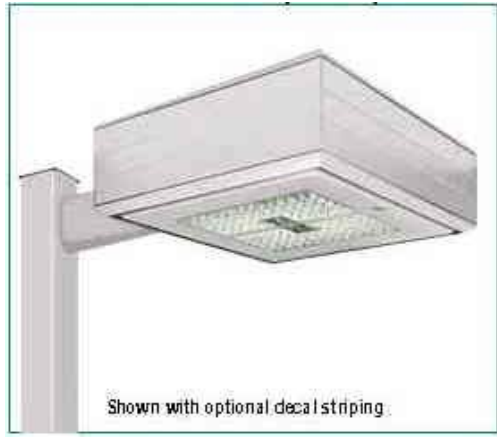
CERTIFICATE OF AUTHORIZATION 24GA28068900 / 21MH00002800	
DRAWN BY E.Q.	CHECKED BY C.J.B.
SCALE 1" = 40'	PROJECT NO. 18M-215
DATE 10-21-19	REVISION NO. 4

## C2.3

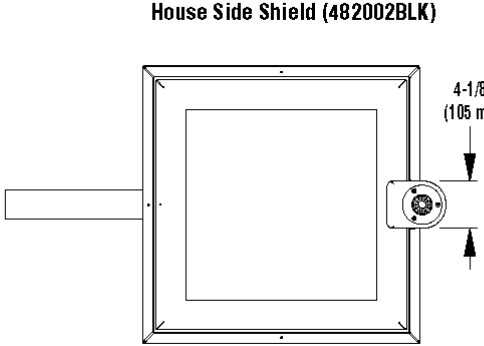
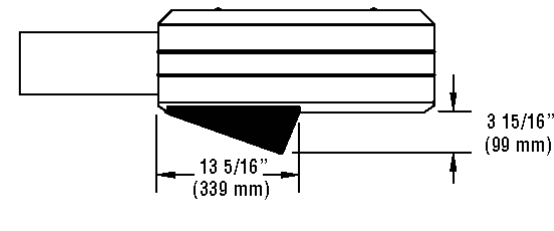
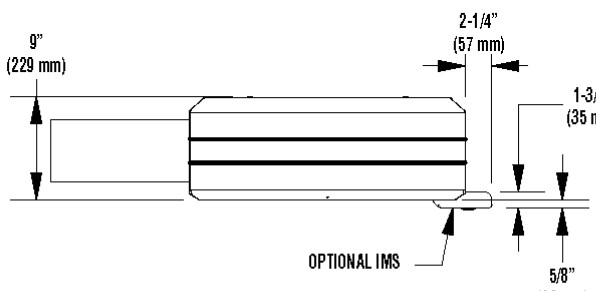
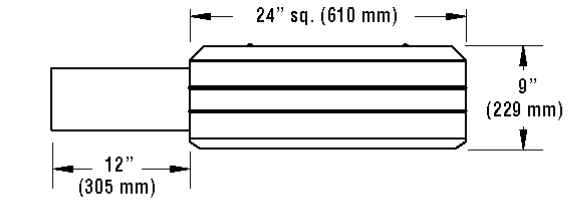






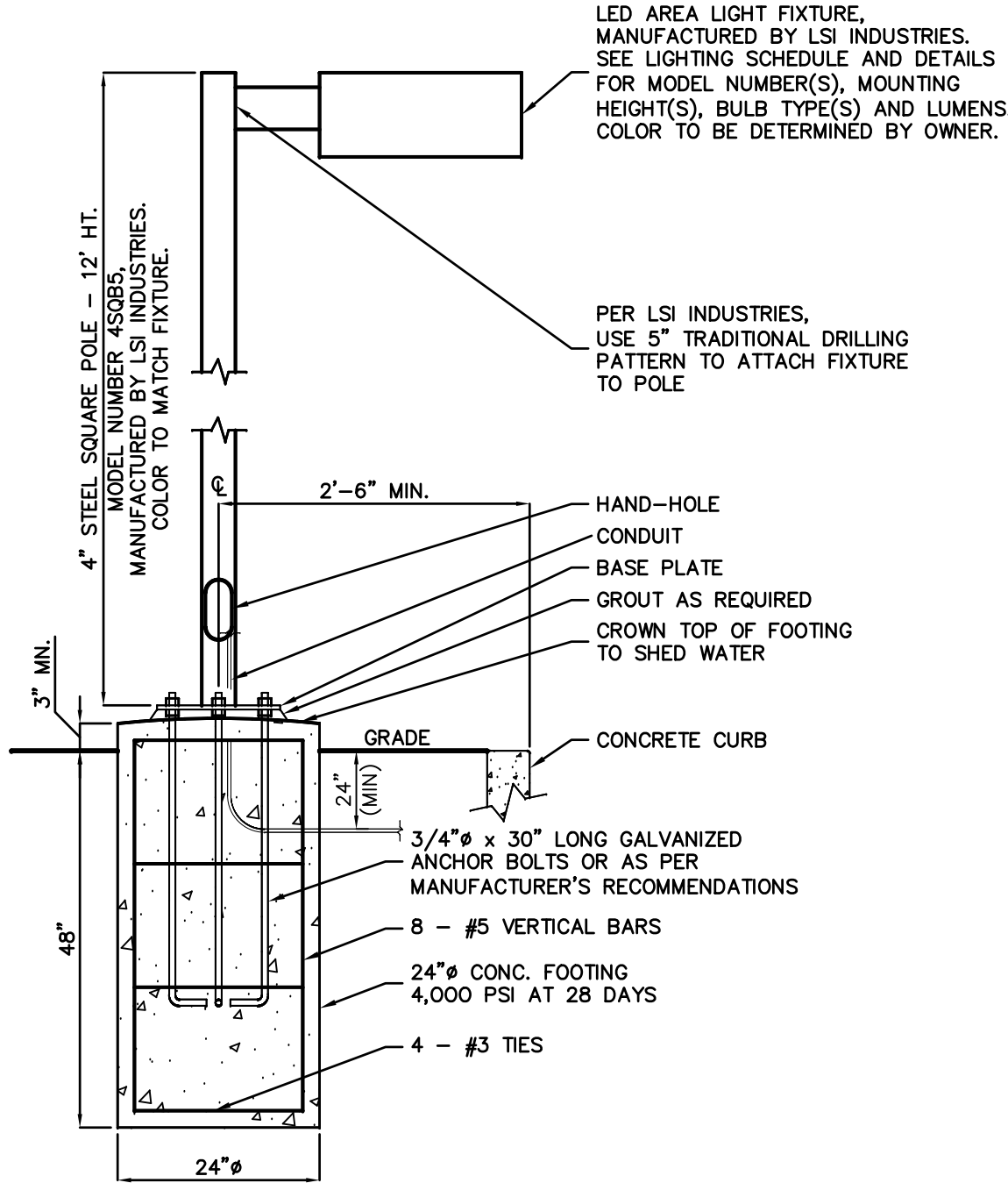


LED AREA LIGHT (XGBM) WITH OPTIONAL INTEGRAL MOTION SENSOR (IMS), MANUFACTURED BY LSI INDUSTRIES. SEE LIGHTING SCHEDULE AND DETAILS FOR MOUNTING HEIGHT(S), LED COLOR TEMPERATURE(S), LIGHTING DISTRIBUTION(S), AND LUMENS.



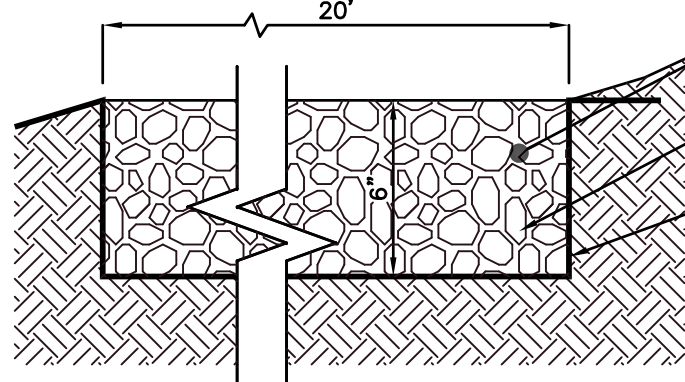
AREA LIGHT FIXTURE DETAIL

NOT TO SCALE



AREA LIGHT & FOOTING DETAIL

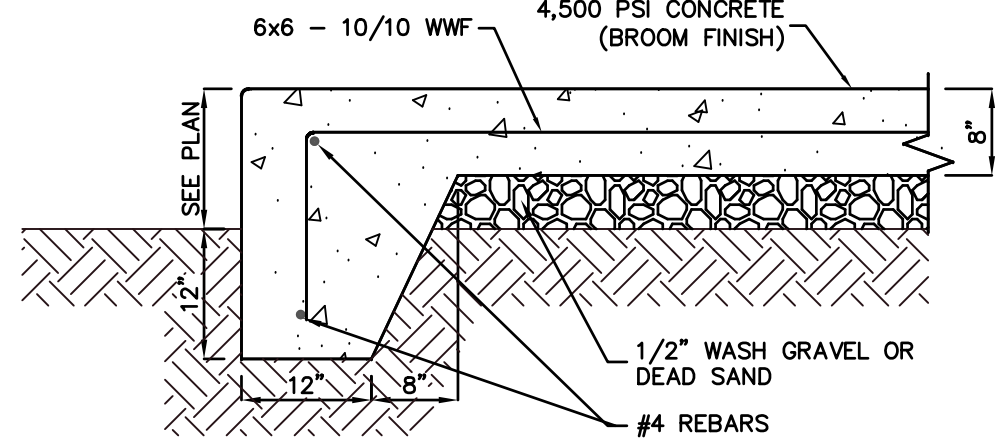
NOT TO SCALE



NOTE: CROSS SLOPE TO MATCH EXISTING SITE GRADING UNLESS OTHERWISE NOTED.

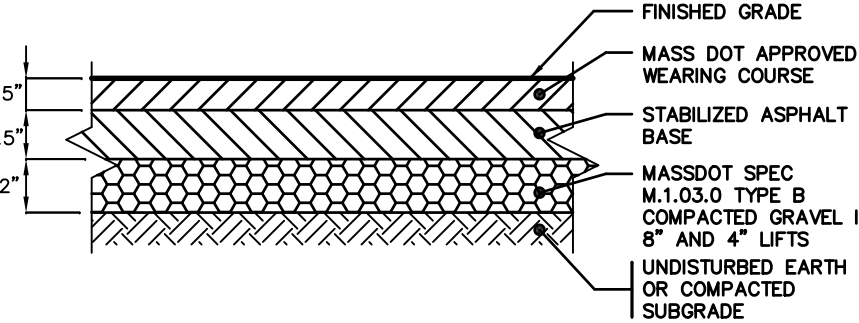
GRAVEL DRIVEWAY DETAIL

NOT TO SCALE



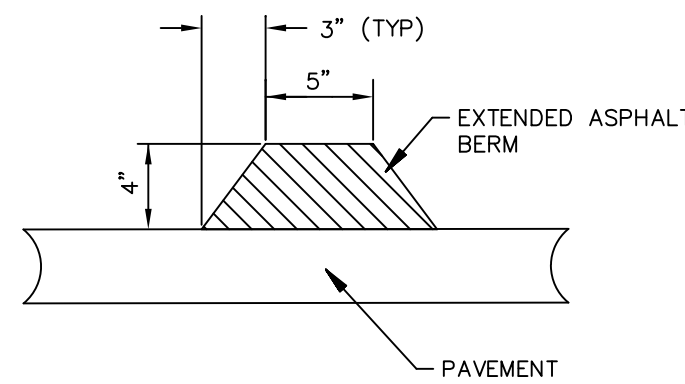
RAISED CONCRETE DETAIL

NOT TO SCALE



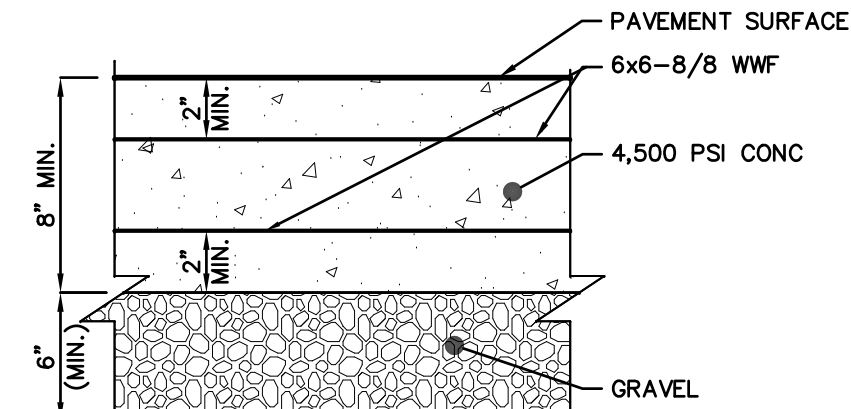
ASPHALT PAVEMENT DETAIL

NOT TO SCALE



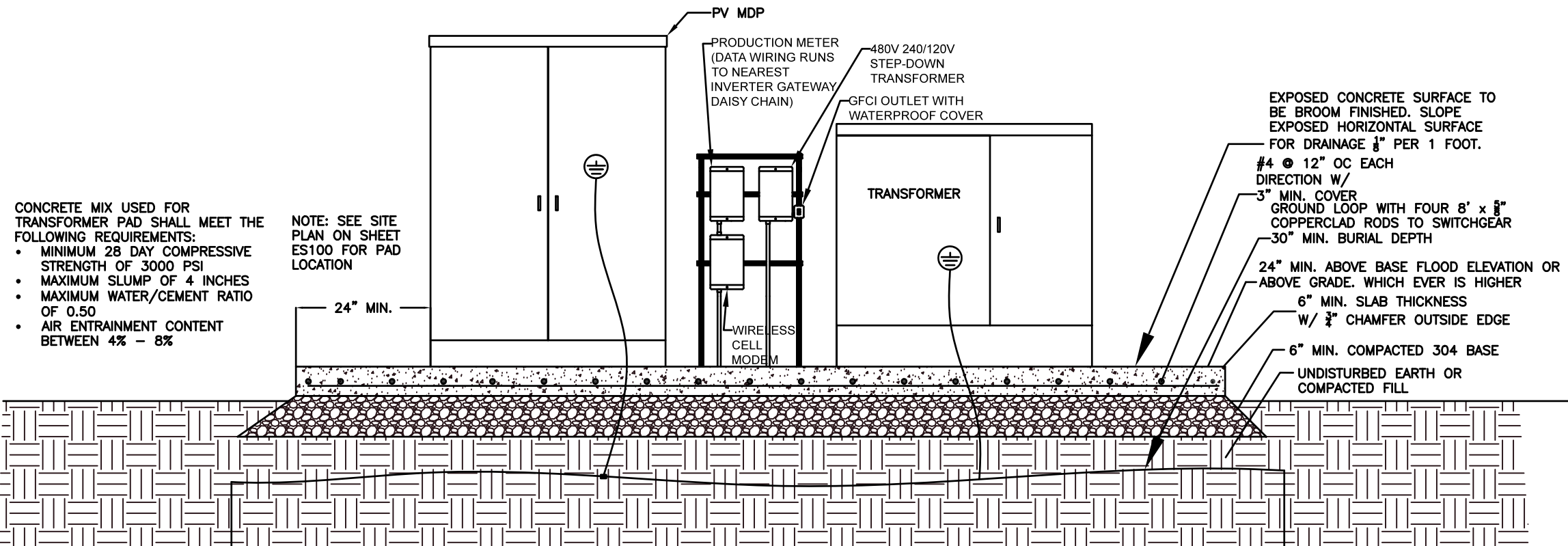
ASPHALT BERM

NOT TO SCALE



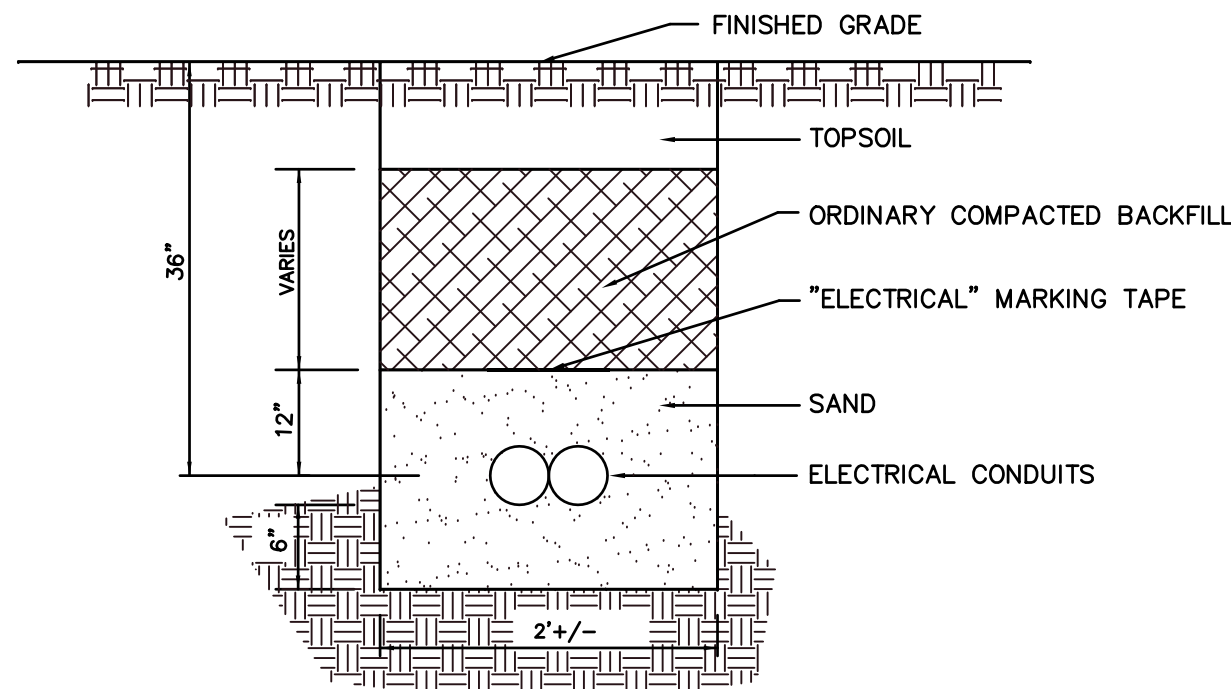
CONCRETE PAVEMENT DETAIL

NOT TO SCALE



MAIN DISTRIBUTION PANEL AND TRANSFORMER PAD MOUNT DETAIL

NOT TO SCALE



TYPICAL ELECTRICAL TRENCH DETAIL

NOT TO SCALE



BATTERY STORAGE CONTAINER

NOT TO SCALE



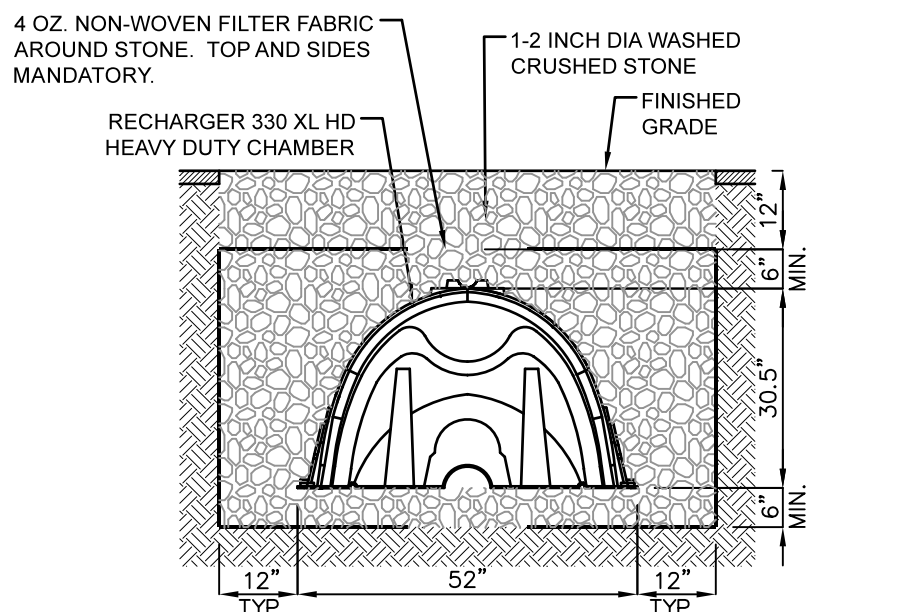
STRING INVERTER

NOT TO SCALE



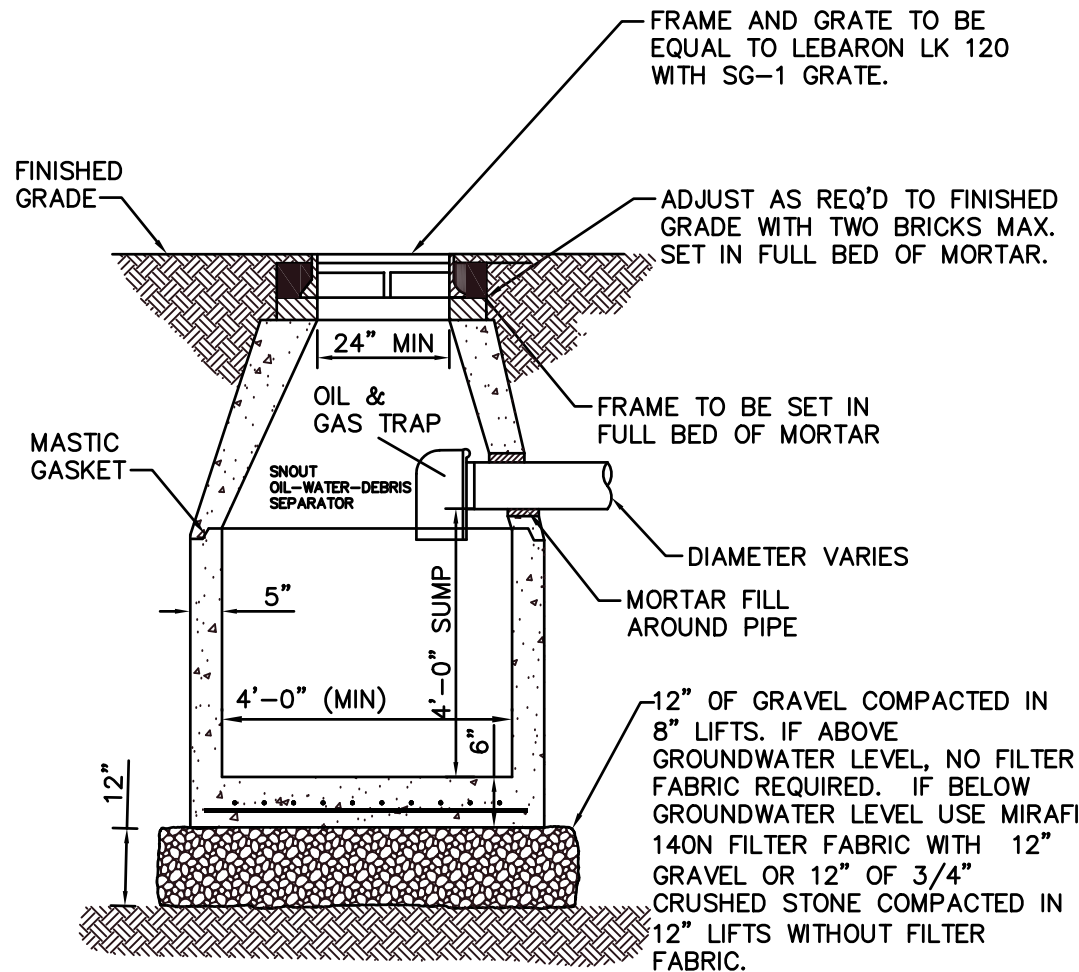
SOLAR PANEL & RACK SYSTEM

NOT TO SCALE



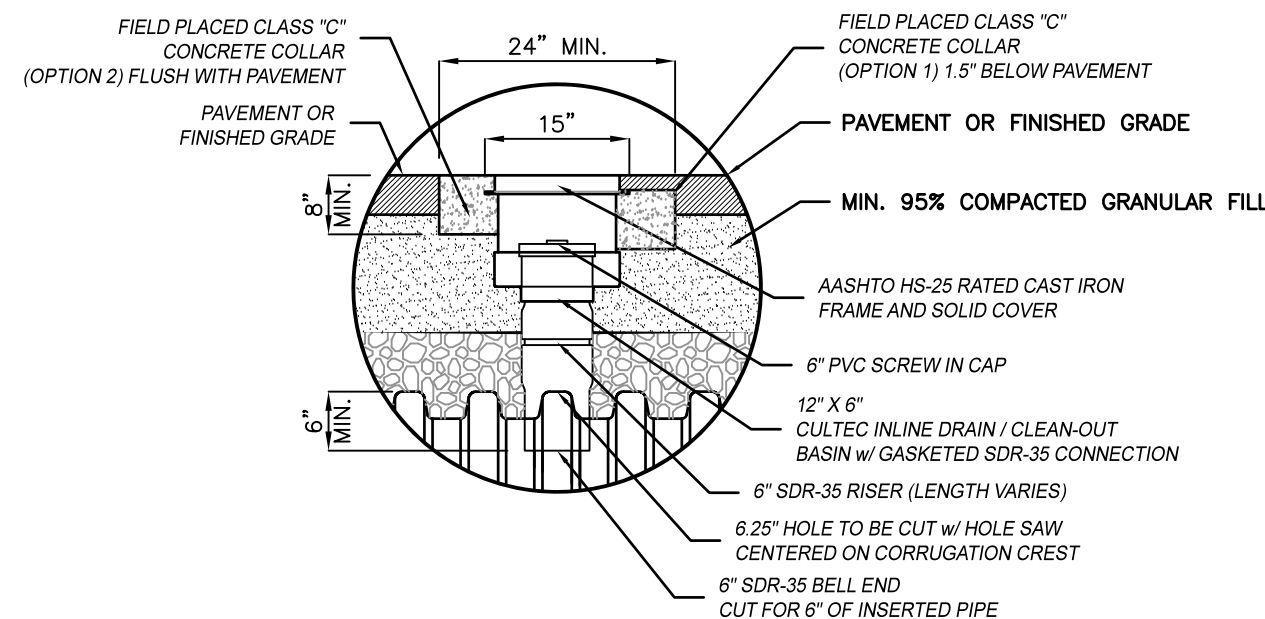
INFILTRATION TRENCH CROSS SECTION

NOT TO SCALE



DEEP SUMP CATCH BASIN DETAIL

NOT TO SCALE



INSPECTION PORT DETAIL

NOT TO SCALE

39 ELM STREET  
SOUTHBIDGE, MA 01550  
P 508.785.0095  
F 508.785.0093  
www.bertinengineering.com



CIVIL • SURVEYING • TRAFFIC • STRUCTURAL • ENVIRONMENTAL • MECHANICAL • LANDSCAPE

CALISTO J. BERTIN, P.E.

PROFESSIONAL ENGINEER

CT LIC. NO. 12950 NJ LIC. NO. 28845

MA LIC. NO. 40595 NY LIC. NO. 60022

NH LIC. NO. 9368 RI LIC. NO. 6694

*Signature of Calisto J. Bertin*

BRUCE A. FITZBACK, P.L.S.

PROFESSIONAL LAND SURVEYOR

MA LIC. NO. 37731

CT LIC. NO. 16970

NOT RELEVANT REVISED

NO.	DATE	REVISION
3	10-20-21	ADDITION OF DEEP SUMP CATCH BASIN & INSPECTION PORT AND INFILTRATION TRENCH CROSS SECTION DETAILS.
2	11-04-20	REMOVAL OF INFILTRATION BASIN DETAILS.
1	11-01-19	REVISION OF DRAWING TITLE, ADDITION OF DRAINAGE AND UTILITY DETAILS.

## SITE & DRAINAGE DETAILS

PROJECT

## LARGE SCALE SOLAR ARRAY

PARCEL NUMBER 40-0-79  
179 GREENWICH ROAD  
TOWN OF WARE  
HAMPSHIRE COUNTY, MASSACHUSETTS

CLIENT

WARE SOLAR IV LLC  
276 N. FOREST AVE. NE  
MARIETTA, GA 30060

CERTIFICATE OF AUTHORIZATION  
24GA28068900 / 21MH00002800

DRAWN BY: J.A.S. CHECKED BY: C.J.B.

SCALE: AS SHOWN PROJECT NO.: 18M-215

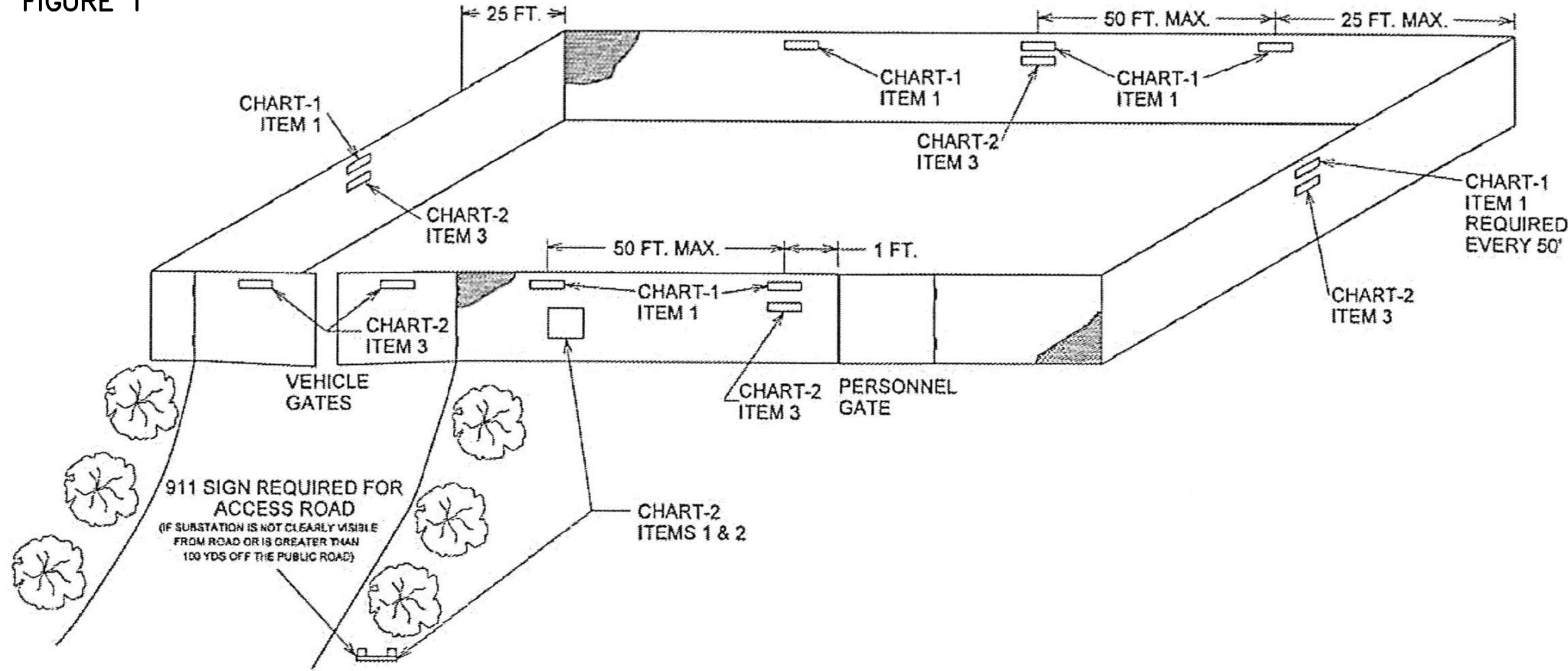
DATE: 10-21-19 REVISION NO.: 3

DRAWING NO.

C3.1



FIGURE 1

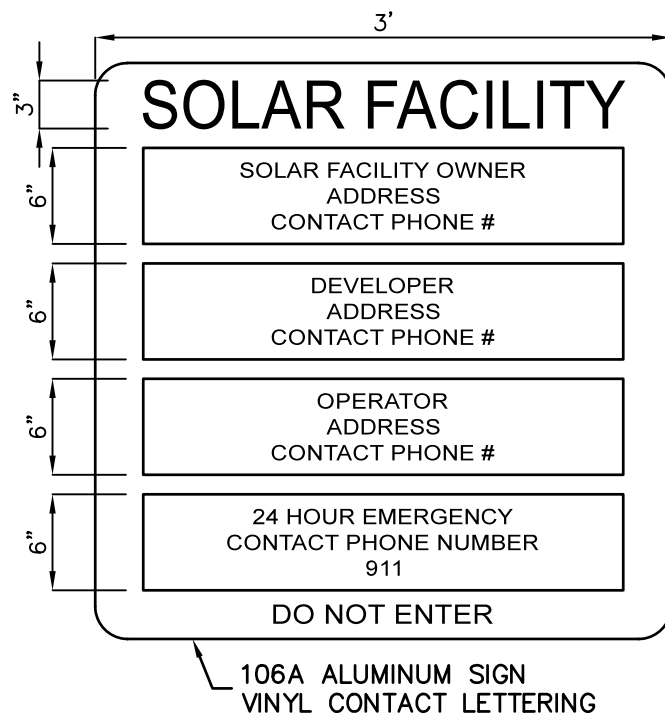
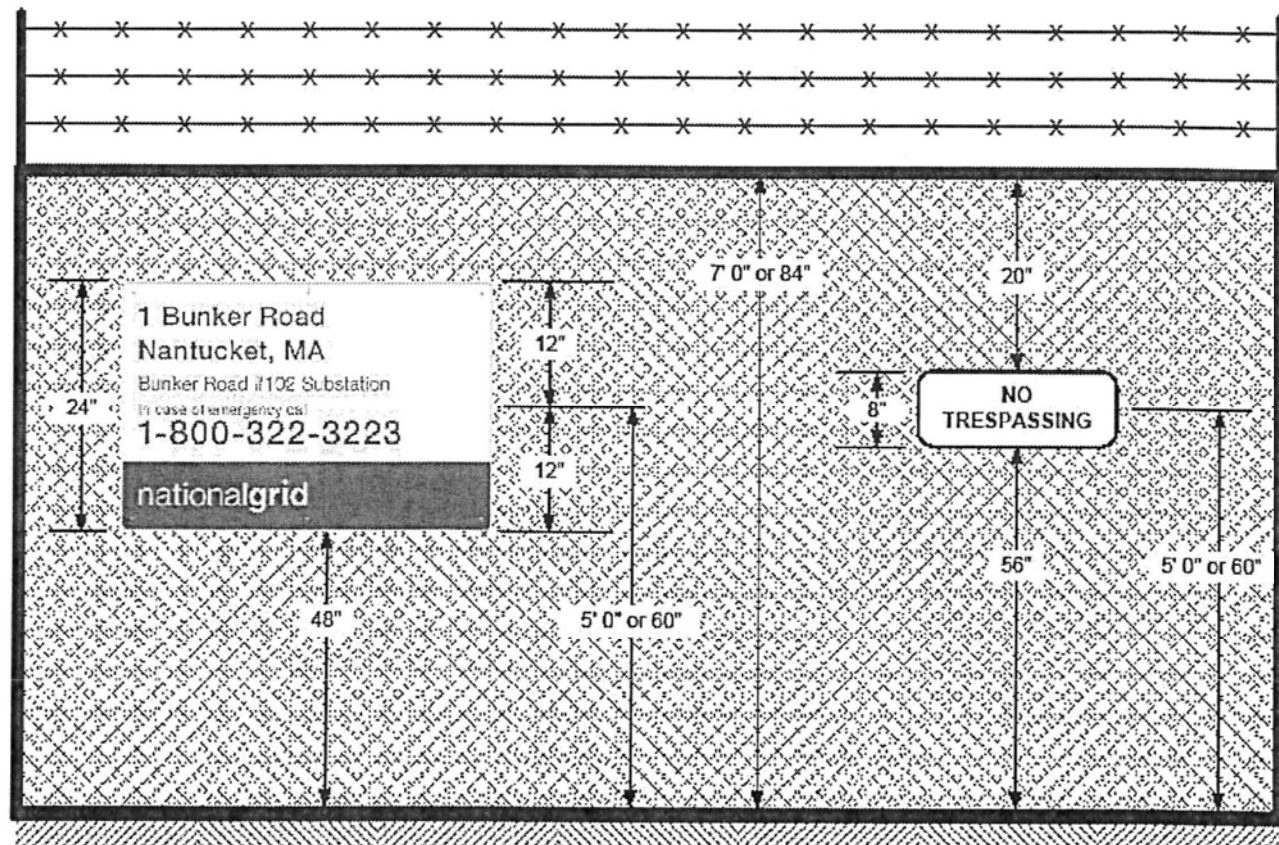


- NOTES:
1. SIGN CHAIN-LINK FENCES USING "DANGER" SIGN (CHART-1 ITEM 1).
  2. SIGN CHAIN-LINK FENCES USING "NO TRESPASSING" SIGN (CHART-2 ITEM 3).
  3. SIGN 4"x4" POSTS AT ACCESS ROAD AND CHAIN-LINK FENCES USING STATION "911" SIGN (CHART-2 ITEM 1 & 2).
  4. ALL SIGNS SHALL BE MOUNTED AS CLOSE TO A HEIGHT OF 60" (1525mm) ABOVE GRADE TO THE CENTERLINE OF THE SIGN AS POSSIBLE. ATTACH SIGNS AS LEVEL AS POSSIBLE.
  5. SIGN ALL GATES AT A HEIGHT OF 60" (1525mm) ABOVE GRADE TO THE CENTERLINE OF SIGN WITH SIGN AT GATE CENTER.
  6. FENCE SIDES THAT CONTAIN NO GATES SHOULD HAVE SYMMETRICAL SIGN PLACEMENT AS MUCH AS IS POSSIBLE.
  7. MAXIMUM DISTANCE BETWEEN SIGNS ALONG FENCE PERIMETER NOT TO EXCEED 50 FEET.
  8. REFER TO FIGURE 1 AND 2 FOR PLACEMENT DETAIL.
  9. SIGN UNHINGED SIDE OF SINGLE GATES AT A HEIGHT OF 60" (1525mm) ABOVE GRADE TO CENTERLINE OF SIGN ONE FOOT FROM GATE POST.
  10. ALL FIGURES AND NOTES TAKEN FROM "NATIONALGRID" ENGINEERING DOCUMENT #ST.03.06.001, PG 14 OF 22, VERSION 1.0 DATED 3-9-09.

SIGN PLACEMENT ON PERIMETER GATES & FENCES

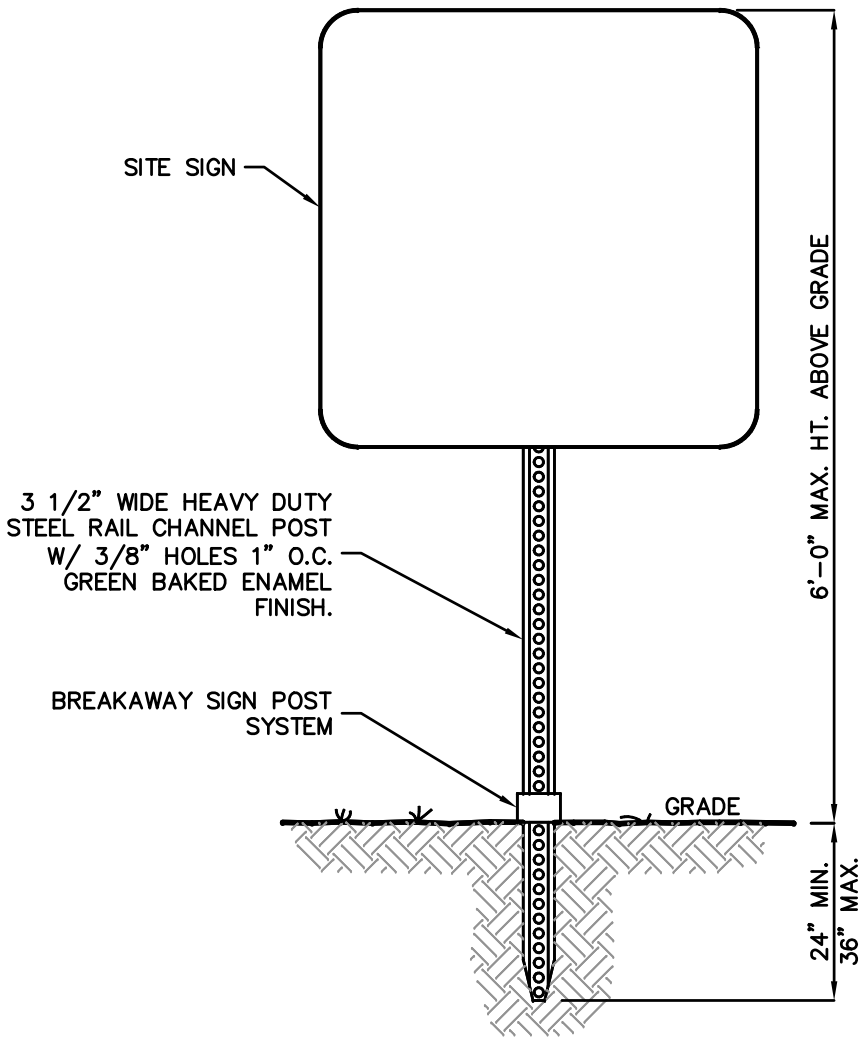
NOT TO SCALE

FIGURE 2 Substation Sign Placement Details



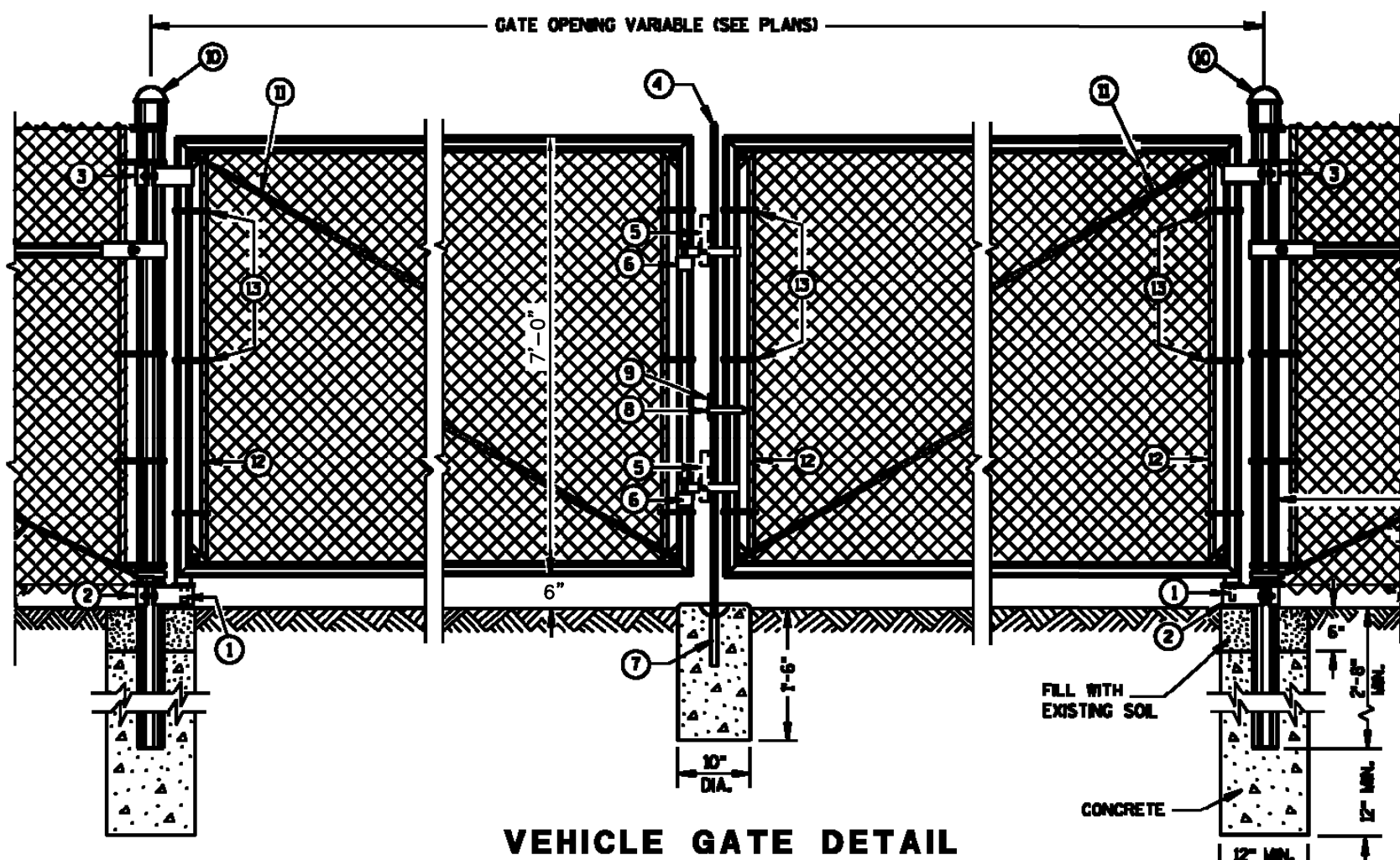
SITE SIGN DETAIL

NOT TO SCALE



SITE SIGN INSTALLATION DETAIL

NOT TO SCALE



- NOTES
1. FOR LEAF GATES GREATER THAN 8 FEET WIDE, INSTALL INTERIOR VERTICAL BRACE RAIL AT 8 FOOT INTERVALS.
  2. FOR FABRIC HEIGHTS GREATER THAN 8 FEET, INSTALL INTERIOR HORIZONTAL BRACE RAILS TO LEAF GATE.
  3. MAXIMUM SAG FOR OUTER GATE MEMBER SHALL NOT EXCEED THE GREATER OF 1% OF THE LEAF GATE WIDTH OR 2 INCHES.

CHAIN LINK FENCE GATE DETAIL

NOT TO SCALE

REQUIRED FENCE POST SIZES

USE	FABRIC HEIGHTS FEET	POST TYPE
TERMINAL POSTS **	LESS THAN OR EQUAL TO 6 FT.	SP3
	GREATER THAN OR EQUAL TO 6 FT.	SP4
LINE POSTS	LESS THAN OR EQUAL TO 6 FT.	SP2
	LESS THAN OR EQUAL TO 8 FT.	SP3
	GREATER THAN OR EQUAL TO 8 FT.	SP4
	LESS THAN OR EQUAL TO 8 FT.	FS2 OR FS2*
	GREATER THAN OR EQUAL TO 8 FT.	FS3

ROUND STEEL FENCE POST (1.6 OZ./SQ. FT. COATING)

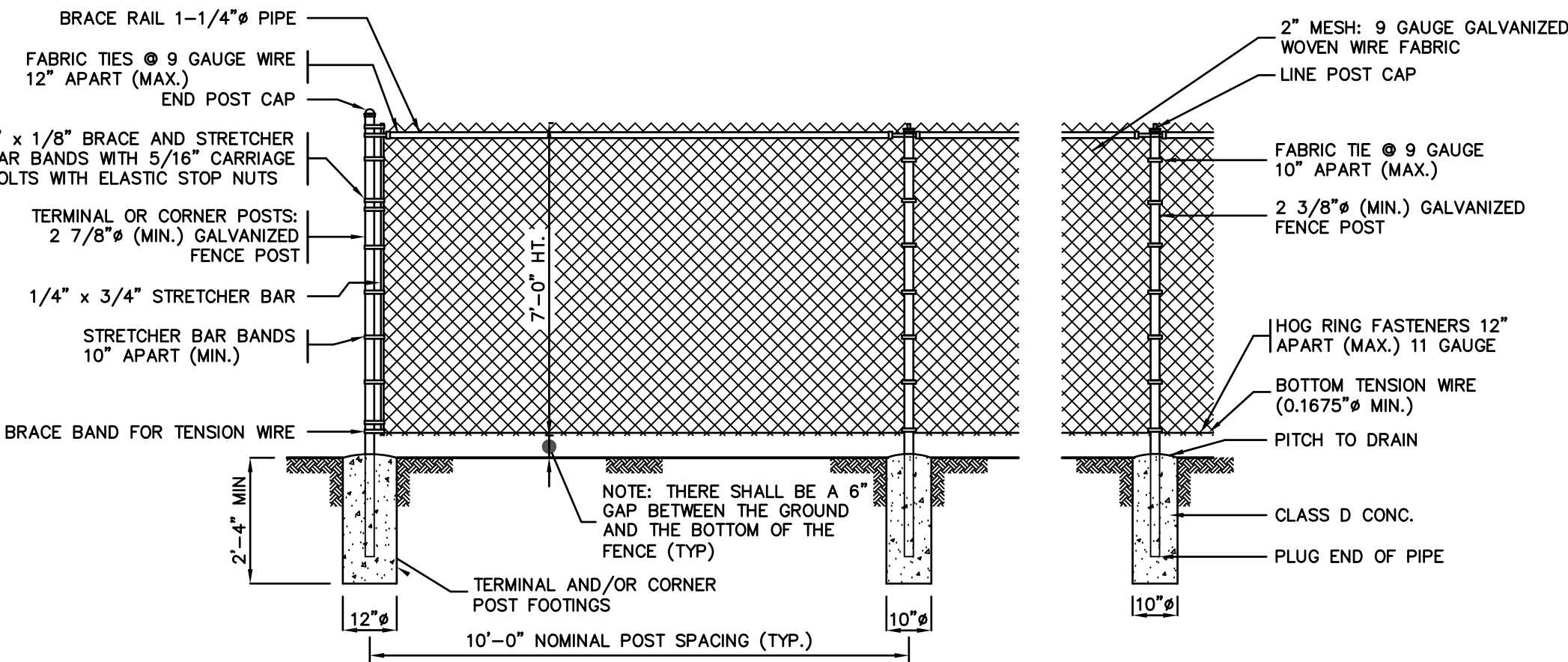
POST TYPE	OUTSIDE DIMENSION INCH	WALL THICKNESS INCH	WEIGHT LBS/FT
SP1	1.660	0.140	2.270
SP2	1.900	0.145	2.720
SP3	2.375	0.154	3.650
SP4	2.875	0.203	5.800
SP5	4.000	0.226	9.120
SP6	6.625	0.280	18.990
SP7	8.625	0.322	28.580

ROLLED-FORMED STEEL FENCE POST (2.0 OZ./SQ. FT. COATING)

POST TYPE	LENGTH (L) INCH	WIDTH (W) INCH	WEIGHT LBS/FT
FS1	1.625	1.25	1.35
FS2*	1.875	1.625	1.850
FS2	1.875	1.625	2.480
FS3	2.250	1.700	2.780

REQUIRED POST SIZE FOR GATES

USE	LEAF WIDTHS FEET	POST TYPE
GATES	LESS THAN OR EQUAL TO 6 FT.	SP4
	LESS THAN OR EQUAL TO 13 FT.	SP5
	LESS THAN OR EQUAL TO 18 FT.	SP6
	LESS THAN OR EQUAL TO 25 FT.	SP7



- NOTES
1. ALL TIES, HOG RINGS AND CLIPS SHALL BE GALVANIZED.
  2. FABRIC SHALL BE GALVANIZED WIRE, ALL PIPE TO CONFORM TO CURRENT ASTM DESIGNATION F 1083, SCHEDULE 40, PLAIN END.
  3. BRACE RAIL AND ROD AT CORNER AND END SECTION ONLY.
  4. ALL REFERENCES TO PIPE DIAMETER ARE ASTM NOMINAL SIZE.
  5. WITH THE APPROVAL OF THE ENGINEER, IN SOFT MARSHY GROUND, POSTS MAY BE DRIVEN, THE CONCRETE FOOTING DELETED AND APPROVED DRIVE ANCHORS USED.

CHAIN LINK FENCE DETAIL

NOT TO SCALE

39 ELM STREET  
SOUTHBIDGE, MA 01550  
P 508.765.0095  
F 508.765.0093  
www.bertinengineering.com

**BERTIN**  
ENGINEERING

CALISTO J. BERTIN, P.E.  
PROFESSIONAL ENGINEER

CT LIC. NO. 12950 NJ LIC. NO. 28845  
MA LIC. NO. 40595 NY LIC. NO. 60022  
NH LIC. NO. 9368 RI LIC. NO. 6694

BRUCE A. FITZBACK, P.L.S.  
PROFESSIONAL LAND SURVEYOR  
MA LIC. NO. 37731  
CT LIC. NO. 16970

NOT TO SCALE

REVISION

NO. DATE

DRAWING TITLE  
SITE DETAILS - 2

PROJECT  
**LARGE SCALE SOLAR ARRAY**  
PARCEL NUMBER 40-0-79  
179 GREENWICH ROAD  
TOWN OF WARE  
HAMPSHIRE COUNTY, MASSACHUSETTS

CLIENT  
**WARE SOLAR IV LLC**  
276 N. FOREST AVE. NE  
MARIETTA, GA 30060

CERTIFICATE OF AUTHORIZATION  
24GA28068900 / 21MH00002800

DRAWN BY J.A.S. CHECKED BY C.J.B.

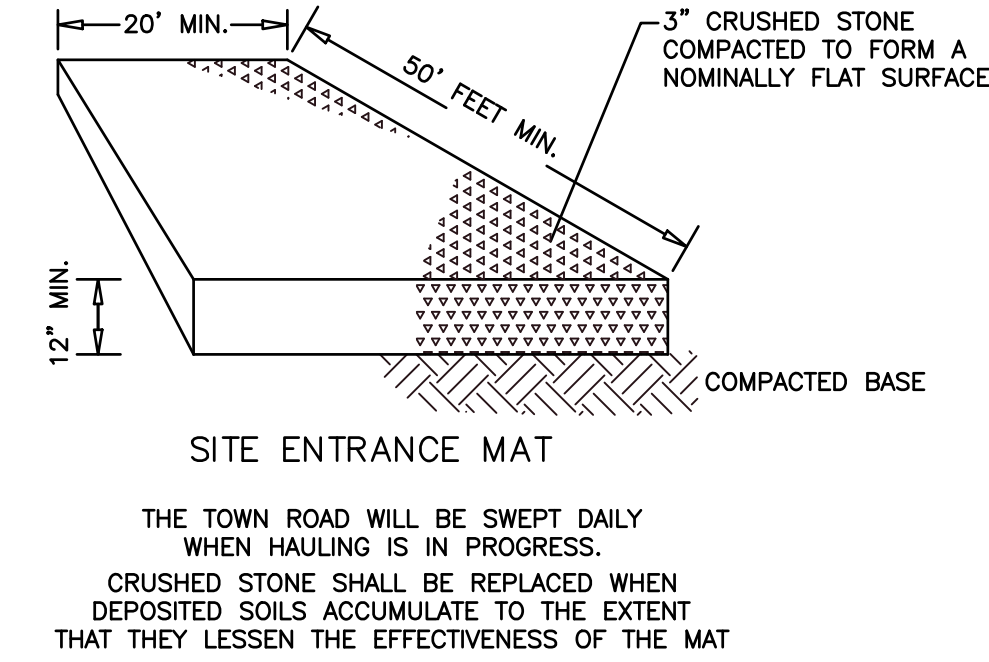
SCALE AS SHOWN PROJECT NO. 18M-215

DATE 10-21-19 REVISION NO. 0

DRAWING NO.

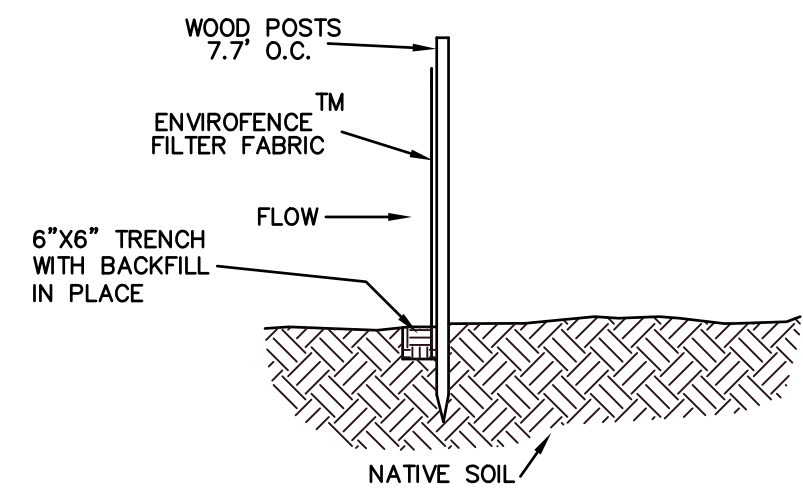
**C3.2**





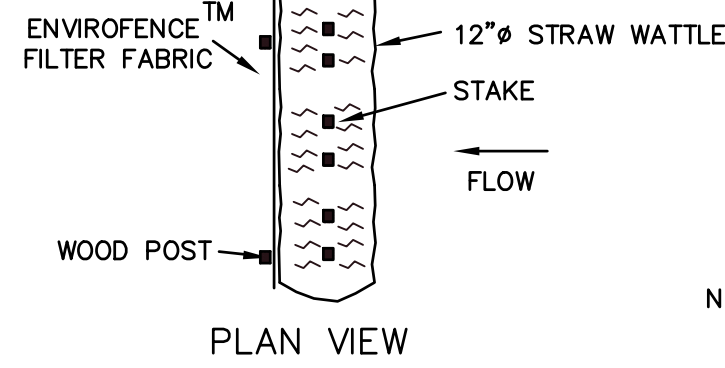
TRACKING PAD DETAIL

NOT TO SCALE



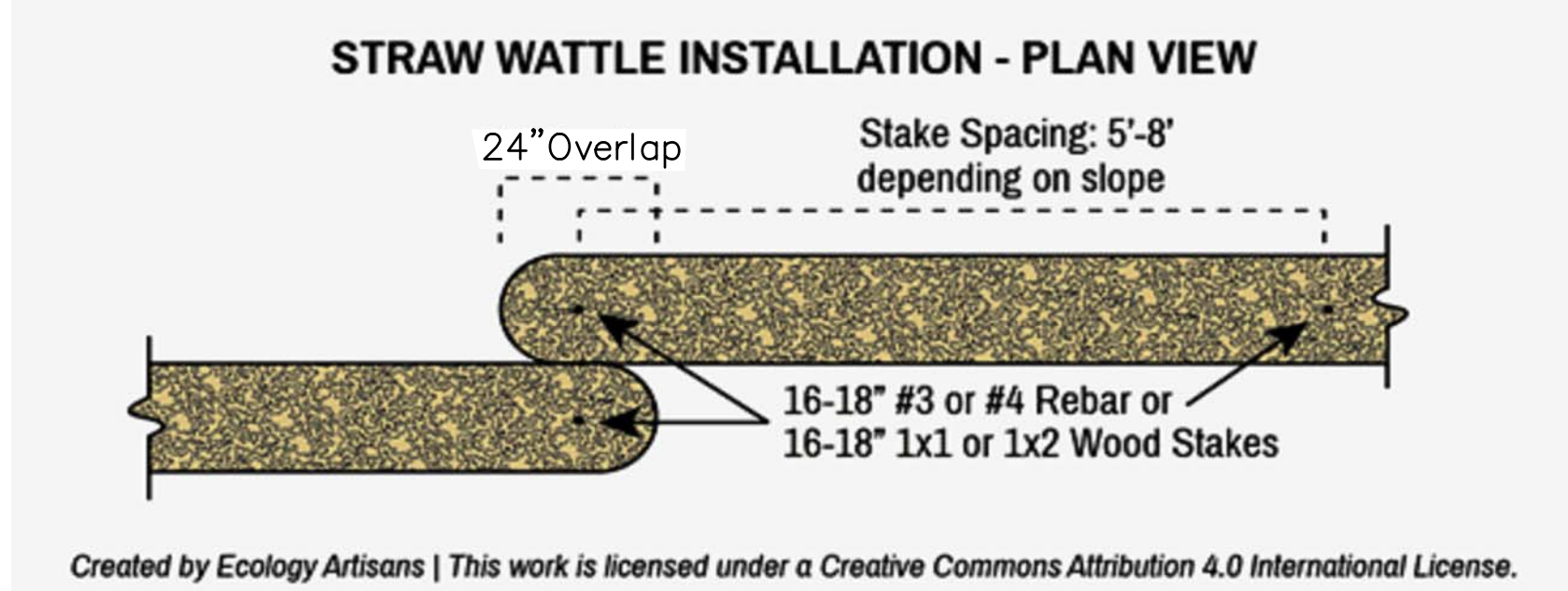
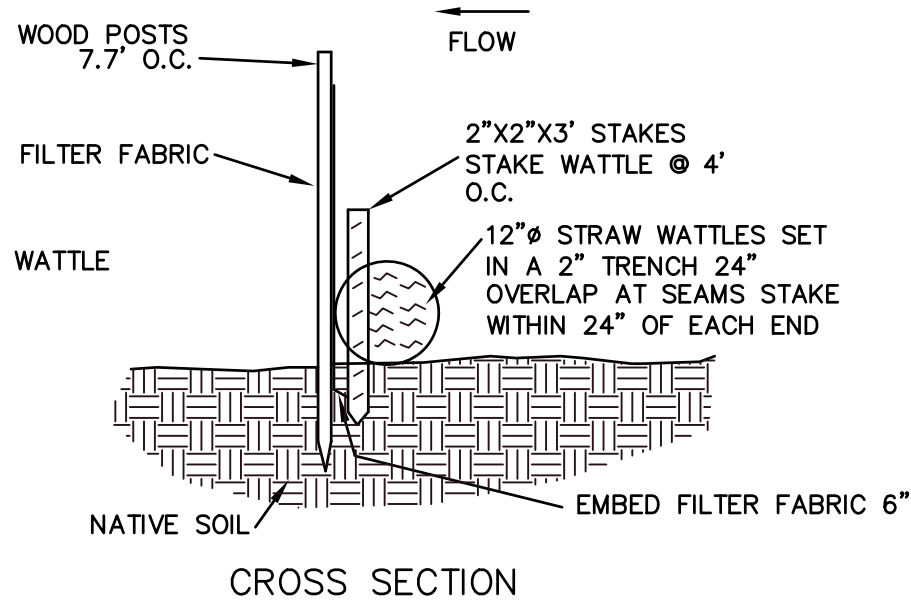
SILT FENCE DETAIL

NOT TO SCALE



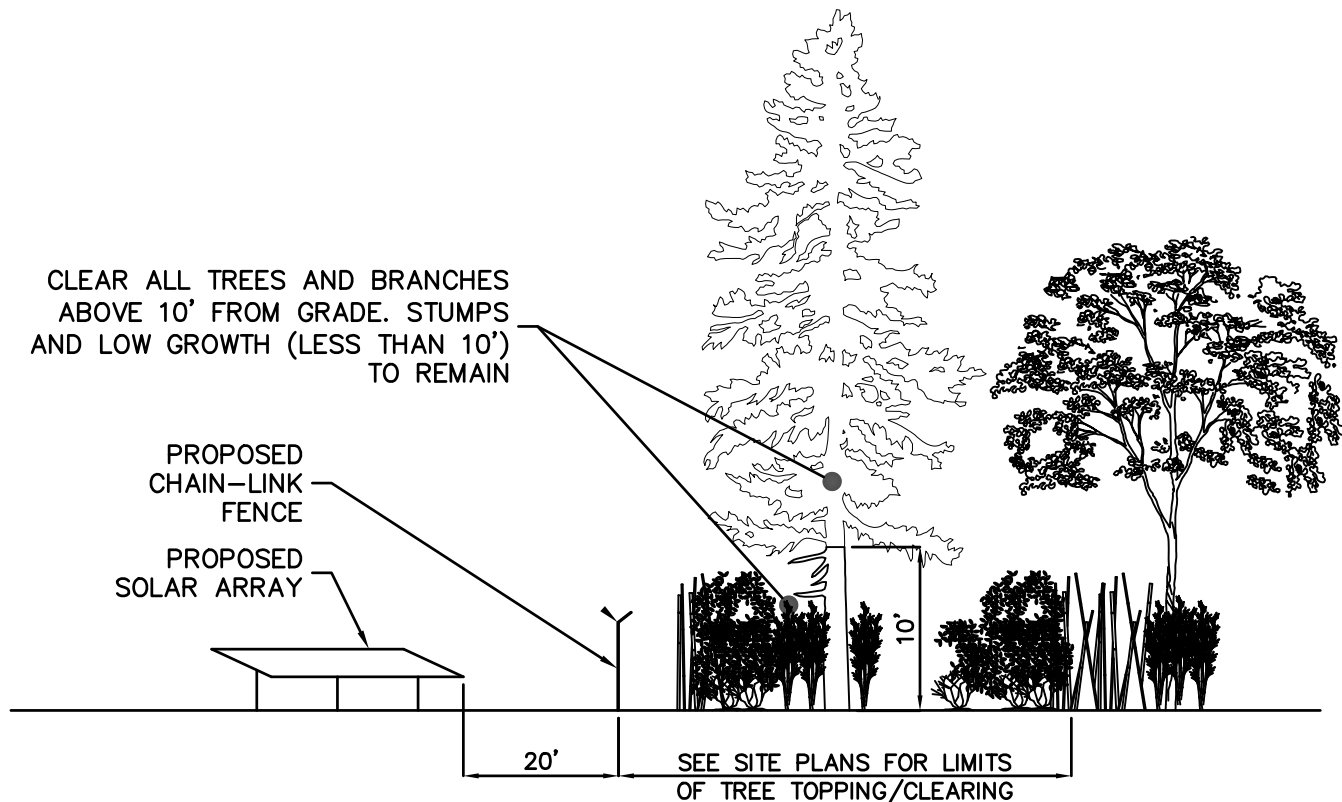
SILT FENCE AND STRAW WATTLE DETAIL

NOT TO SCALE



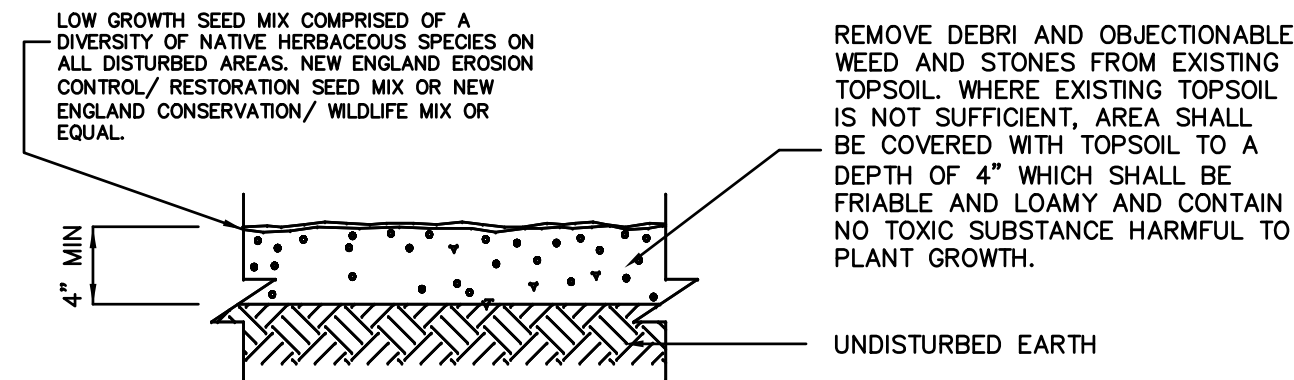
WATTLE INSTALLATION DETAIL

NOT TO SCALE



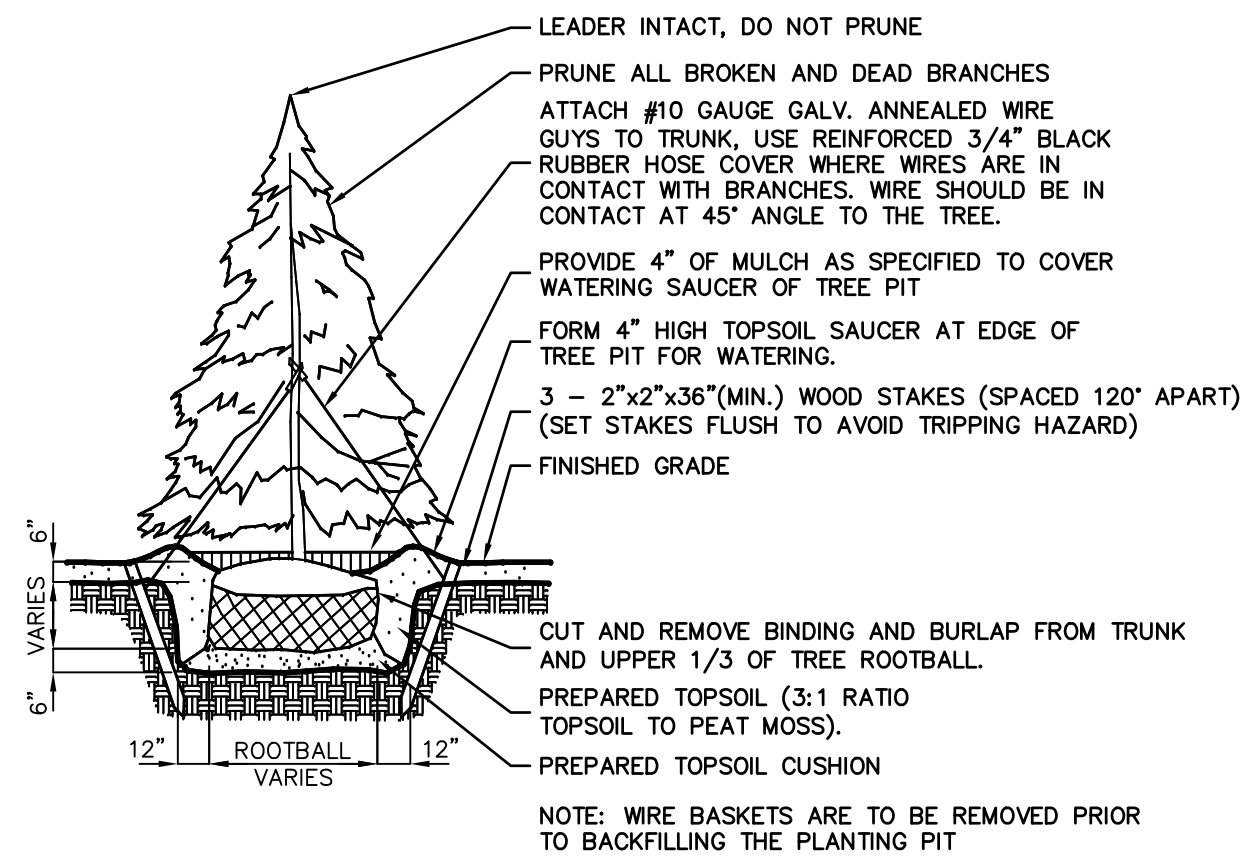
TREE CLEARING DETAIL

NOT TO SCALE



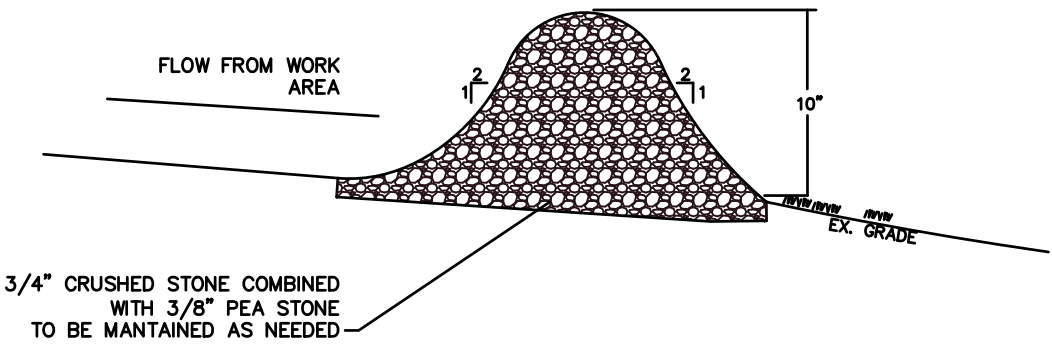
TOP SOIL & SEED DETAIL

NOT TO SCALE



EVERGREEN TREE PLANTING DETAIL

NOT TO SCALE



STONE CHECK DAM DETAIL

NOT TO SCALE

39 ELM STREET  
SOUTHBURIDGE, MA 01550  
P 508.765.0095  
F 508.765.0093  
www.bertinengineering.com



CIVIL • SURVEYING • TRAFFIC • STRUCTURAL • ENVIRONMENTAL • MECHANICAL • LANDSCAPE

CALISTO J. BERTIN, P.E.  
PROFESSIONAL ENGINEER

CT LIC. NO. 12950 NJ LIC. NO. 28845  
MA LIC. NO. 40595 NY LIC. NO. 60022  
NH LIC. NO. 9368 RI LIC. NO. 6694

*[Signature]*

BRUCE A. FITZBACK, P.L.S.

PROFESSIONAL LAND SURVEYOR  
MA LIC. NO. 37731  
CT LIC. NO. 16970

NOT TO SCALE/NOTED

E.G.

REVISION OF WATTLE INSTALLATION DETAIL TO FEATURE A 24" OVERLAP.

REVISION

1 01-20-21  
NO. DATE

DRAWING TITLE

SOIL EROSION &  
SEDIMENT CONTROL  
AND LANDSCAPE  
DETAILS

PROJECT

**LARGE SCALE  
SOLAR ARRAY**

PARCEL NUMBER 40-0-79  
179 GREENWICH ROAD  
TOWN OF WARE  
HAMPSHIRE COUNTY, MASSACHUSETTS

CLIENT

WARE SOLAR IV LLC  
276 N. FOREST AVE. NE  
MARIETTA, GA 30060

CERTIFICATE OF AUTHORIZATION  
24GA28068900 / 21MH00002800

DRAWN BY J.A.S. CHECKED BY C.J.B.

SCALE AS SHOWN PROJECT NO. 18M-215

DATE 10-21-19 REVISION NO. 1

DRAWING NO.

**C3.3**