



July 16, 2021

Ware Conservation Commission  
126 Main Street  
Ware, MA 01082

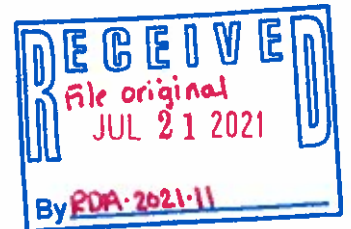
RE: Quabbin Stop Log Structure Lead Abatement Project  
RDA Submittal  
Waiver Request

Dear Conservation Commission Members:

Pursuant to our submittal of a Request for Determination of Applicability for the referenced project, we are requesting a waiver of the requirement to provide a certified list of abutters within 300 feet of the property boundary due to the large size of the parcel involved. We are also requesting a waiver of the requirement to notify said abutters via certified mail.

Sincerely:

Daniel Clark  
Quabbin/Ware River Regional Director  
Department of Conservation and Recreation



COMMONWEALTH OF MASSACHUSETTS · EXECUTIVE OFFICE OF ENERGY & ENVIRONMENTAL AFFAIRS

Department of Conservation and Recreation  
251 Causeway Street, Suite 600  
Boston, MA 02114-2199  
617-626-1250 617-626-1351 Fax  
[www.mass.gov/orgs/departments-of-conservation-and-recreation](http://www.mass.gov/orgs/departments-of-conservation-and-recreation)



Charles D. Baker  
Governor

Karyn E. Polito  
Lt. Governor

Kathleen A. Theoharides, Secretary  
Executive Office of Energy & Environmental Affairs

Jim Montgomery, Commissioner  
Department of Conservation & Recreation





Massachusetts Department of Environmental Protection  
Bureau of Resource Protection - Wetlands

Ware  
City/Town

**WPA Form 1 - Request for Determination of Applicability**

Massachusetts Wetlands Protection Act M.G.L. c. 131, §40

**A. General Information**

**Important:**  
When filling out forms on the computer, use only the tab key to move your cursor - do not use the return key.



1. Applicant:

DCR - Div. of Water Supply Protection - Quabbin  
Daniel Clark, Regional Dir

Dan.clark@mass.gov  
E-Mail Address

485 Ware Road

Mailing Address

Belchertown

City/Town

MA

State

01007

Zip Code

(413) 213-7928

Phone Number

(413) 784-1751

Fax Number (if applicable)

2. Representative (if any):

MA DCR

Firm

Ann Pervere, Water Resource Engineer

ann.pervere@mass.gov

Contact Name

E-Mail Address

Same as above

Mailing Address

City/Town

State

Zip Code

(413) 213-7928

Phone Number

Fax Number (if applicable)

**B. Determinations**

1. I request the Ware Conservation Commission make the following determination(s). Check any that apply:

- ☐ a. whether the **area** depicted on plan(s) and/or map(s) referenced below is an area subject to jurisdiction of the Wetlands Protection Act.
- ☐ b. whether the **boundaries** of resource area(s) depicted on plan(s) and/or map(s) referenced below are accurately delineated.
- ☒ c. whether the **work** depicted on plan(s) referenced below is subject to the Wetlands Protection Act.
- ☒ d. whether the area and/or work depicted on plan(s) referenced below is subject to the jurisdiction of any **municipal wetlands ordinance or bylaw** of:

Belchertown  
Name of Municipality

Ware  
ap

- ☐ e. whether the following **scope of alternatives** is adequate for work in the Riverfront Area as depicted on referenced plan(s).



Massachusetts Department of Environmental Protection  
Bureau of Resource Protection - Wetlands

Ware  
City/Town

**WPA Form 1- Request for Determination of Applicability**

Massachusetts Wetlands Protection Act M.G.L. c. 131, §40

**C. Project Description**

1. a. Project Location (use maps and plans to identify the location of the area subject to this request):

Quabbin Hill Road

Street Address

Ware

City/Town

Map 64

Assessors Map/Plat Number

64-0-1

Parcel/Lot Number

- b. Area Description (use additional paper, if necessary):

The project is located at the Quabbin Spillway stop log structure. From the Middle Entrance to the Quabbin Reservoir on Route 9, proceed approximately 0.63 miles along Winsor Dam Road and Quabbin Hill Road to the stop log structure, located on the left (west) side of the road. The Spillway and adjoining stop log structure were constructed in 1934 in conjunction with Winsor Dam and Goodnough Dike. The stop log structure is sited at the interface between the Quabbin Reservoir and the discharge channel to the Swift River. The stop log structure is accessed via a stairway and catwalk and consists of a shortened weir with five bays of paired vertical slots for installation of stop log timbers to modulate the reservoir's water level.

- c. Plan and/or Map Reference(s):

Quabbin Stop Log Structure, Lead Abatement Project, Locus Map

Title

6/15/2021

Date

MassDEP Online Map Viewer, Wetland & Wetland Change Areas Map

Title

6/4/2021

Date

Quabbin Stop Log, Lead Abatement Project, Site Staging Sketch

Title

6/15/2021

Date

2. a. Work Description (use additional paper and/or provide plan(s) of work, if necessary):

As was common at the time this feature was constructed (1934), the metal components of the stop log structure were initially treated with a lead-based paint. Some subsequent paint applications may have also been lead-based. The goal of this project is to remove existing lead-based paint from the structure and to restore surfaces with a more environmentally friendly and durable paint product. As the work area for this project is located between the Quabbin Reservoir and the spillway discharge channel, care will be taken to ensure that no material will enter the waters. Prior to the commencement of any work, a staging platform and enclosure will be constructed. The containment will consist of a work platform with a EDPM rubber coated containment basin, walls and a roof. Construction of the staging platform and enclosure will be contingent upon the elevation of the reservoir. No installation shall occur underwater. Equipment and materials will be staged from an adjacent roadside parking area above the stop log area. Best management practices will be employed as needed to protect surface waters. Lead-based paint will be removed using the Greener Blast system (information attached). All removed material and blasting media will be collected in the containment basin, pumped to containers at roadway staging area and properly disposed of in accordance with applicable regulations. Following removal, a 3-coat macropoxy system by Sherwin Williams will be applied to the metal components. The containment area and any best management practices that have been applied will only be removed once all work is complete.



## WPA Form 1- Request for Determination of Applicability

Massachusetts Wetlands Protection Act M.G.L. c. 131, §40

### C. Project Description (cont.)

b. Identify provisions of the Wetlands Protection Act or regulations which may exempt the applicant from having to file a Notice of Intent for all or part of the described work (use additional paper, if necessary).

310 CMR 10.02(2)(a)2. "activities conducted to maintain, repair or replace, but not substantially change or enlarge an existing and lawfully located structure or facility used in the service of the public" ... "provided said work utilizes the best practical measures to avoid or minimize impacts to wetland resource areas outside the footprint of said structure or facility."

3. a. If this application is a Request for Determination of Scope of Alternatives for work in the Riverfront Area, indicate the one classification below that best describes the project.

- ☐ Single family house on a lot recorded on or before 8/1/96
- ☐ Single family house on a lot recorded after 8/1/96
- ☐ Expansion of an existing structure on a lot recorded after 8/1/96
- ☐ Project, other than a single-family house or public project, where the applicant owned the lot before 8/7/96
- ☐ New agriculture or aquaculture project
- ☐ Public project where funds were appropriated prior to 8/7/96
- ☐ Project on a lot shown on an approved, definitive subdivision plan where there is a recorded deed restriction limiting total alteration of the Riverfront Area for the entire subdivision
- ☐ Residential subdivision; institutional, industrial, or commercial project
- ☐ Municipal project
- ☐ District, county, state, or federal government project
- ☐ Project required to evaluate off-site alternatives in more than one municipality in an Environmental Impact Report under MEPA or in an alternatives analysis pursuant to an application for a 404 permit from the U.S. Army Corps of Engineers or 401 Water Quality Certification from the Department of Environmental Protection.

b. Provide evidence (e.g., record of date subdivision lot was recorded) supporting the classification above (use additional paper and/or attach appropriate documents, if necessary.)



Massachusetts Department of Environmental Protection  
Bureau of Resource Protection - Wetlands

Ware  
City/Town

**WPA Form 1- Request for Determination of Applicability**

Massachusetts Wetlands Protection Act M.G.L. c. 131, §40

**D. Signatures and Submittal Requirements**

I hereby certify under the penalties of perjury that the foregoing Request for Determination of Applicability and accompanying plans, documents, and supporting data are true and complete to the best of my knowledge.

I further certify that the property owner, if different from the applicant, and the appropriate DEP Regional Office were sent a complete copy of this Request (including all appropriate documentation) simultaneously with the submittal of this Request to the Conservation Commission.

Failure by the applicant to send copies in a timely manner may result in dismissal of the Request for Determination of Applicability.

Name and address of the property owner:

Department of Conservation and Recreation, Office of Watershed Mgmt  
Priscilla Geigis, Deputy Commissioner

251 Causeway Street

Mailing Address

Boston

City/Town

MA

State

02114

Zip Code

Signatures:

I also understand that notification of this Request will be placed in a local newspaper at my expense in accordance with Section 10.05(3)(b)(1) of the Wetlands Protection Act regulations.

Signature of Applicant

Date

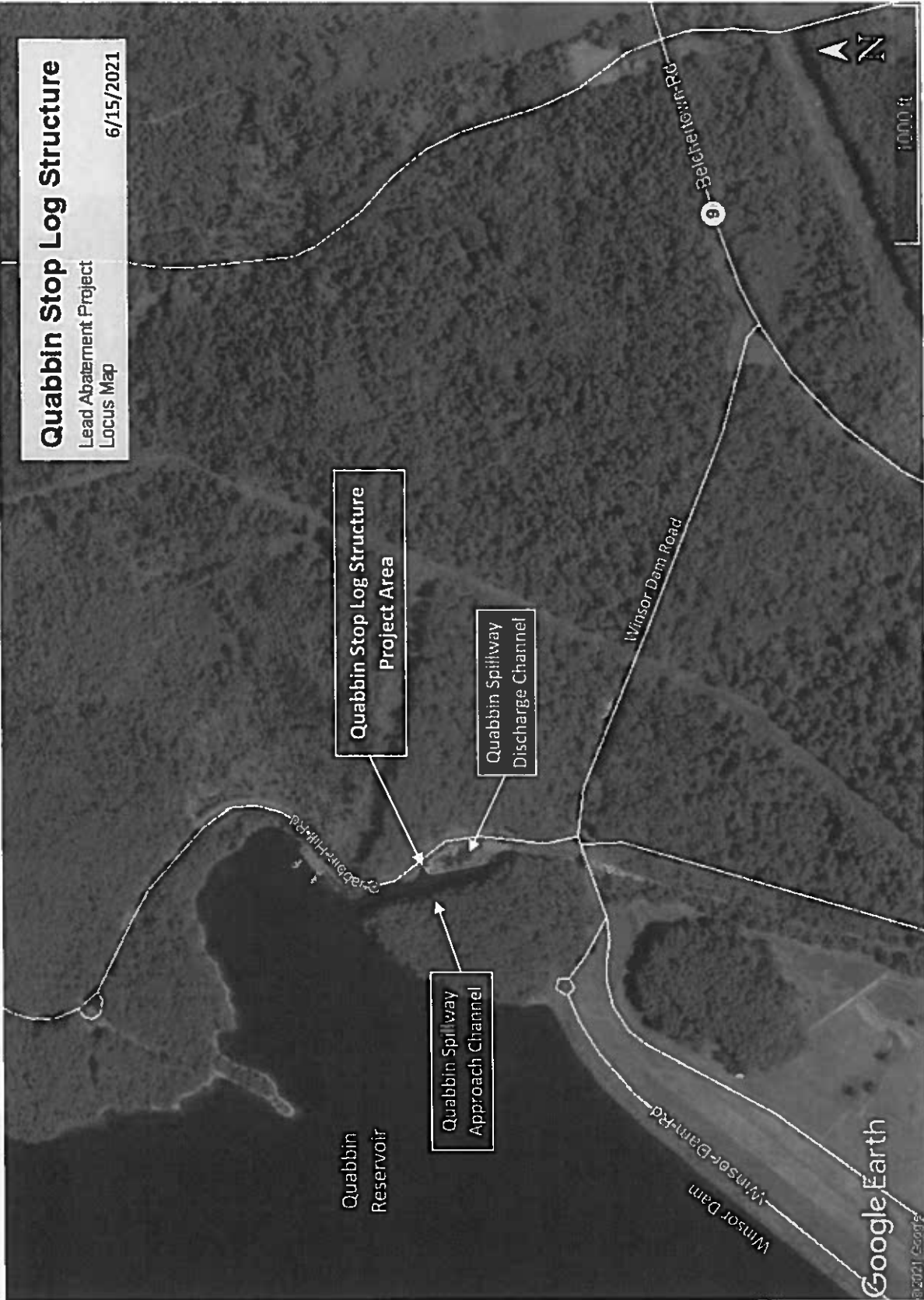
Signature of Representative (if any)

Date

# Quabbin Stop Log Structure

Lead Abatement Project  
Locus Map

6/15/2021







MassDEP Online Map Viewer

# Wetland and Wetland Change Areas Map



## LEGEND

OW - Open Water

WS1 - Wooded Swamp  
Deciduous

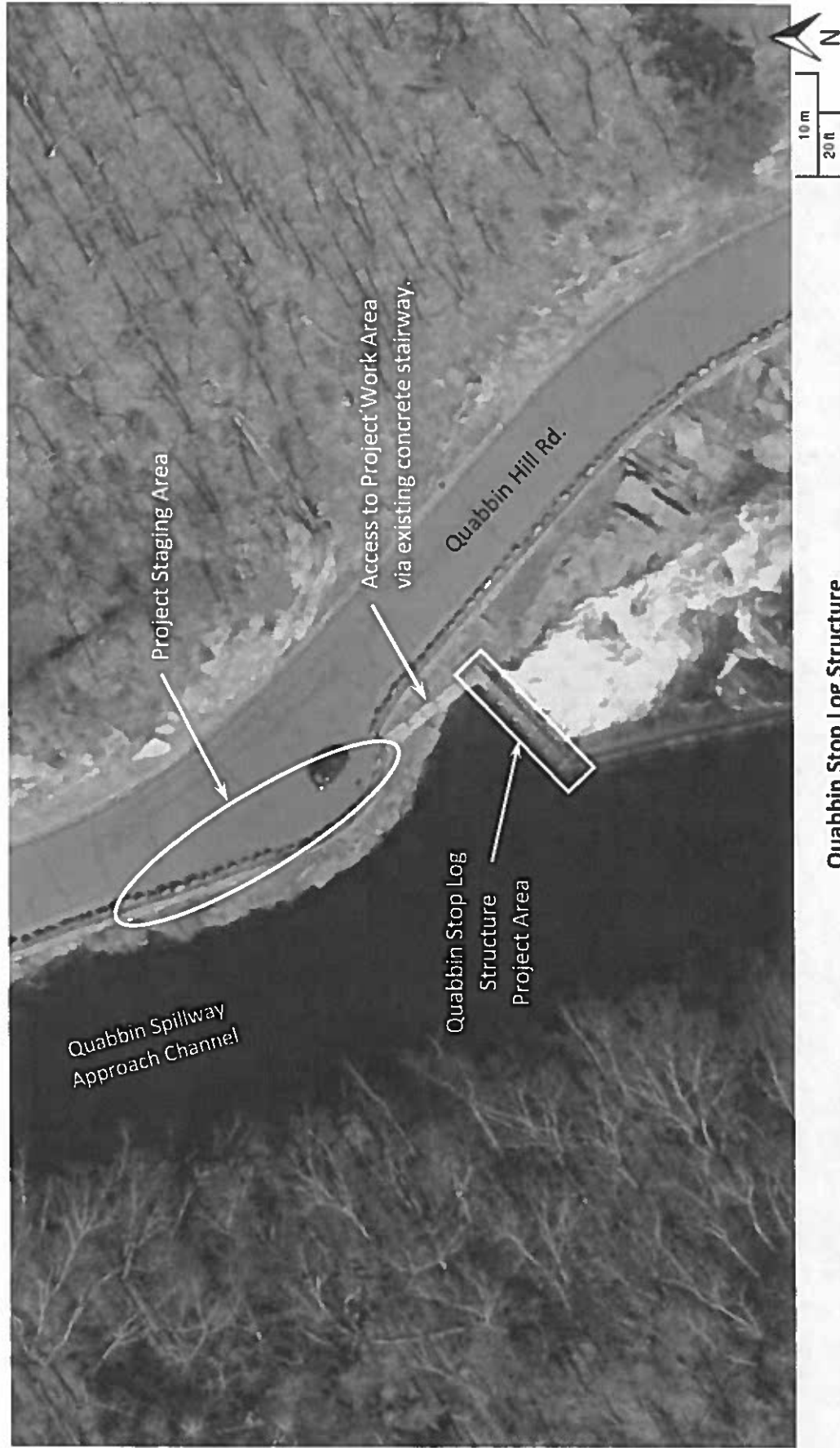


Quabbin Stop Log Structure



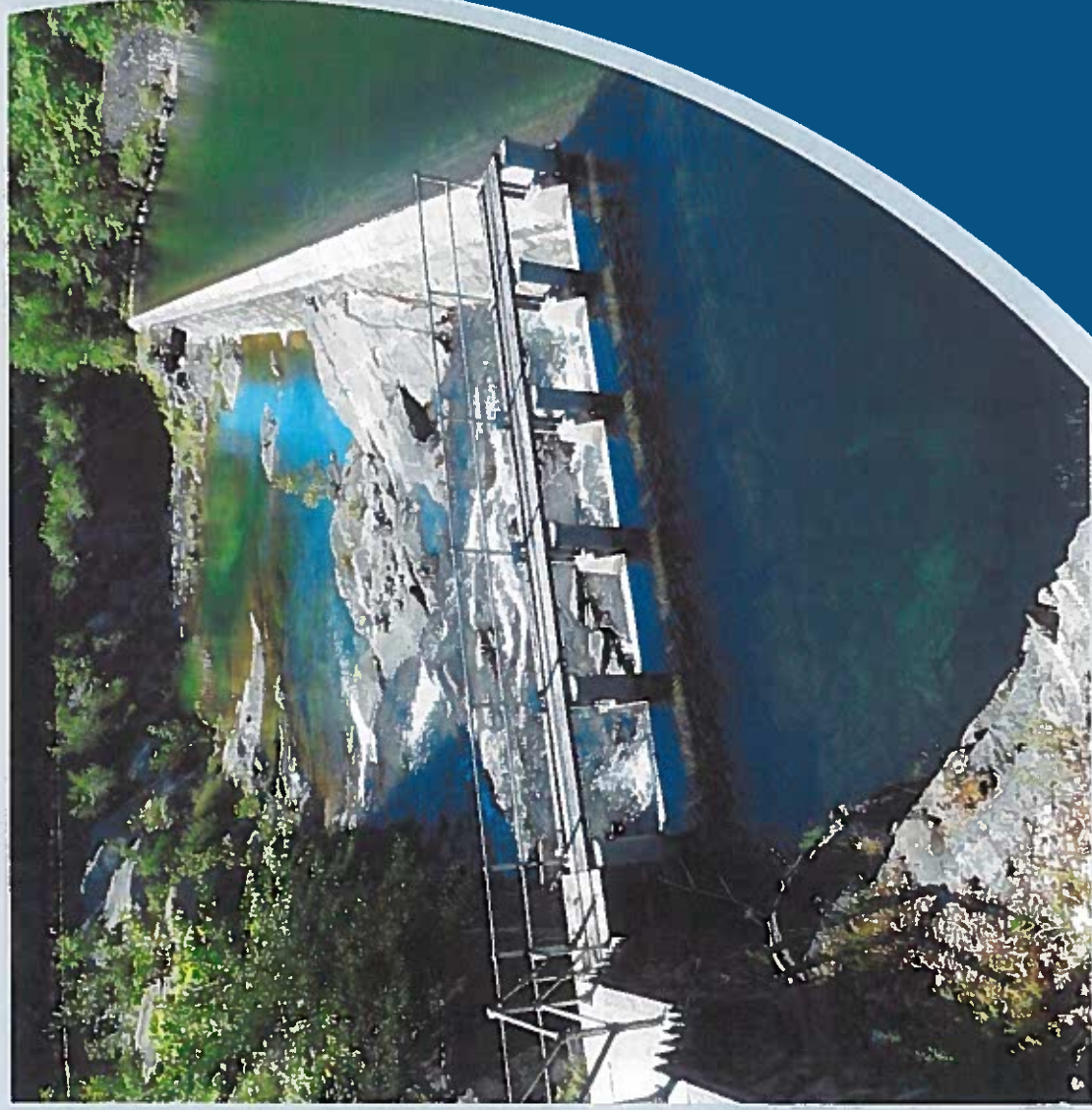
NHESP Mapping

Orthos 2019  
2019 Color Orthos (USGS)



Quabbin Stop Log Structure  
Lead Abatement Project  
Site Staging Sketch  
6/15/2021





# Quabbin Stop Log Structure Lead Paint Removal and Improvement Project

Owner: DCR-DWSP

Project Contractor:  
Environmental  
Restorations Inc.

Late Summer/Fall 2021

# Project Description

## Quabbin Stop Log Structure

### Upstream Face



Lead paint on upstream bumpers and walkway structure is deteriorating.

Note:

- Corrosion of structural elements of the structure.
- Flaking lead paint in proximity to the water.





# Quabbin Stop Log Structure Downstream Face



Existing paint on metal components of Stop Log structure to abated under this project.

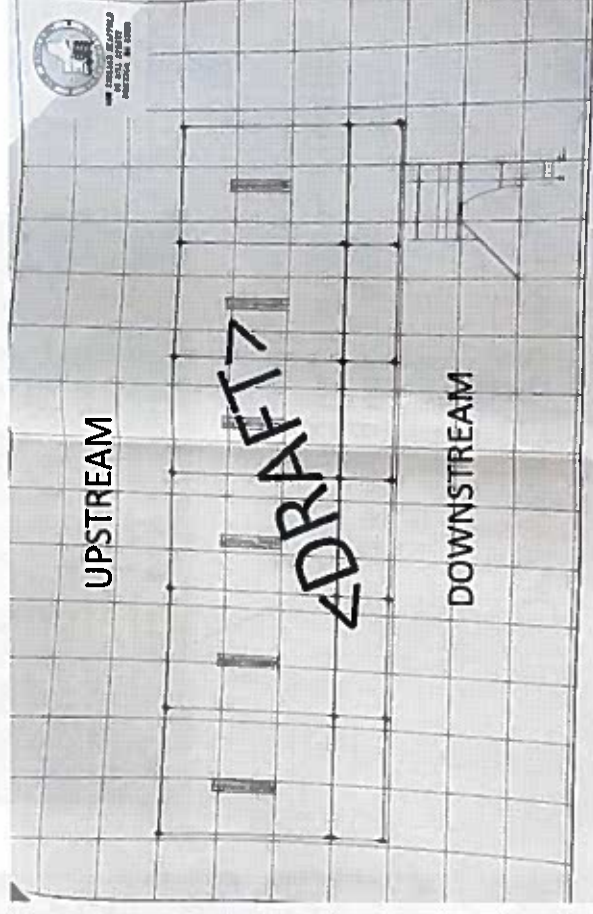




#### Scaffolding Features

- 10'X40' Work Platform
- EDPM Rubber Containment Membrane
- Covered Roof for Containment
- Anchored into masonry joints (3" bolts)

## Scope of Work Quabbin Stop Log Structure Sketch of Proposed Scaffolding & Containment Platform



Ref. New England Scaffolding, Brockton, MA





### Greener Blast Advantage

Greener Blast Technologies, Inc. provides a top tier, job-site ready piece of blasting and cutting equipment. Years of on the job experience and knowledge have gone into the design and construction of this machine. It fits perfectly into any blasters and has been tested and proven to be the most efficient and reliable.



### The Greener Blast Mini Package:

- 1 High-Performance Slurry Blaster and hose
- 20' T x 4' Pvc Blast Hose
- 20' Tein Line
- Deadman Switch
- 40' 3/2" Performance Nozzle

### The Machine:

- Engineered welded steel frame
- 1.5 Cubic Feet Certified Blast Pot
- 50 Gallons on board water tank
- Pneumatically operated (2 way)
- Air Requirement: 150Cfm-200Cfm
- Blast Pressure Achievable: 250PSi-1200PSi
- Surface Profile Achievable: 0-4MM

### Unit Dimensions:

- 27' x 40' x 45'

### Introducing Greener Blast Mini

- 60-80% less media consumption (100-150lbs per hour on an average blast)
- 100% less water consumption
- Minimal containment needed
- Versatility of use
- Ability to handle numerous blast materials
- Portability
- Unmatched 24/7 customer support

Lee Sabber  
**OLIMAG** Inc.

### MATERIAL SAFETY DATA SHEET

SECTION I		SECTION II	
Product Name	Lee Sabber Blasting Inc.	Product Name	Lee Sabber Blasting Inc.
Manufacturer	775, Blue Canyon, PO Box 276, Portland, Oregon 97208	Manufacturer	775, Blue Canyon, PO Box 276, Portland, Oregon 97208
Product Description	Slurry Blasting Media	Product Description	Slurry Blasting Media
Product Formula	Slurry Blasting Media	Product Formula	Slurry Blasting Media
Product Hazards	Slurry Blasting Media	Product Hazards	Slurry Blasting Media
Product Precautions	Slurry Blasting Media	Product Precautions	Slurry Blasting Media
Product First Aid	Slurry Blasting Media	Product First Aid	Slurry Blasting Media
Product Spill Response	Slurry Blasting Media	Product Spill Response	Slurry Blasting Media
Product Disposal	Slurry Blasting Media	Product Disposal	Slurry Blasting Media

### ANALYSIS

SECTION I		SECTION II	
Product Name	Lee Sabber Blasting Inc.	Product Name	Lee Sabber Blasting Inc.
Manufacturer	775, Blue Canyon, PO Box 276, Portland, Oregon 97208	Manufacturer	775, Blue Canyon, PO Box 276, Portland, Oregon 97208
Product Description	Slurry Blasting Media	Product Description	Slurry Blasting Media
Product Formula	Slurry Blasting Media	Product Formula	Slurry Blasting Media
Product Hazards	Slurry Blasting Media	Product Hazards	Slurry Blasting Media
Product Precautions	Slurry Blasting Media	Product Precautions	Slurry Blasting Media
Product First Aid	Slurry Blasting Media	Product First Aid	Slurry Blasting Media
Product Spill Response	Slurry Blasting Media	Product Spill Response	Slurry Blasting Media
Product Disposal	Slurry Blasting Media	Product Disposal	Slurry Blasting Media

### PHYSICAL DATA

SECTION I		SECTION II	
Product Name	Lee Sabber Blasting Inc.	Product Name	Lee Sabber Blasting Inc.
Manufacturer	775, Blue Canyon, PO Box 276, Portland, Oregon 97208	Manufacturer	775, Blue Canyon, PO Box 276, Portland, Oregon 97208
Product Description	Slurry Blasting Media	Product Description	Slurry Blasting Media
Product Formula	Slurry Blasting Media	Product Formula	Slurry Blasting Media
Product Hazards	Slurry Blasting Media	Product Hazards	Slurry Blasting Media
Product Precautions	Slurry Blasting Media	Product Precautions	Slurry Blasting Media
Product First Aid	Slurry Blasting Media	Product First Aid	Slurry Blasting Media
Product Spill Response	Slurry Blasting Media	Product Spill Response	Slurry Blasting Media
Product Disposal	Slurry Blasting Media	Product Disposal	Slurry Blasting Media

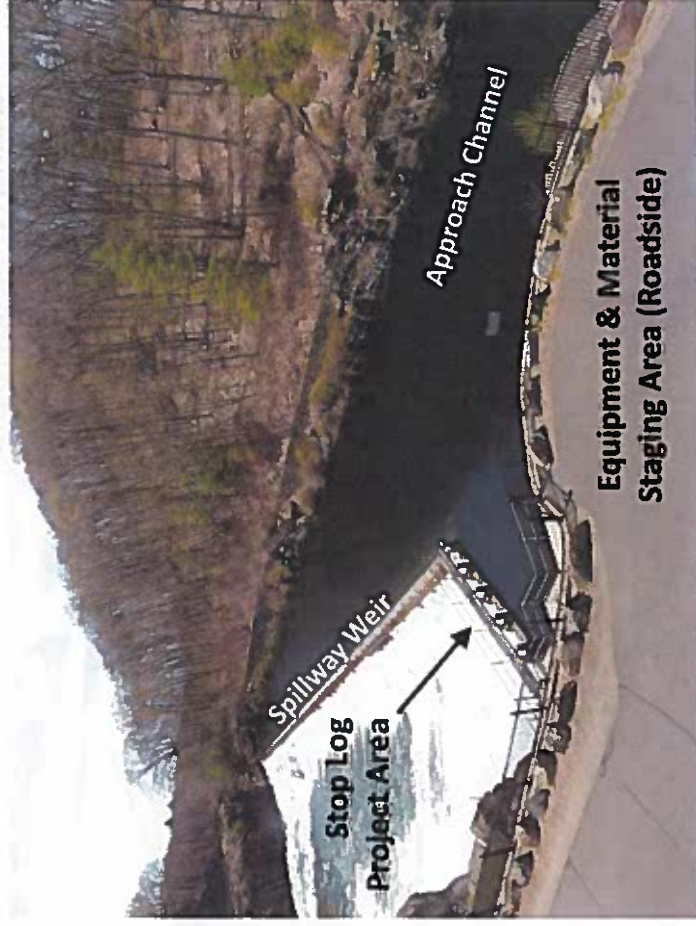
### FIRE & EXPLOSION HAZARD DATA

SECTION I		SECTION II	
Product Name	Lee Sabber Blasting Inc.	Product Name	Lee Sabber Blasting Inc.
Manufacturer	775, Blue Canyon, PO Box 276, Portland, Oregon 97208	Manufacturer	775, Blue Canyon, PO Box 276, Portland, Oregon 97208
Product Description	Slurry Blasting Media	Product Description	Slurry Blasting Media
Product Formula	Slurry Blasting Media	Product Formula	Slurry Blasting Media
Product Hazards	Slurry Blasting Media	Product Hazards	Slurry Blasting Media
Product Precautions	Slurry Blasting Media	Product Precautions	Slurry Blasting Media
Product First Aid	Slurry Blasting Media	Product First Aid	Slurry Blasting Media
Product Spill Response	Slurry Blasting Media	Product Spill Response	Slurry Blasting Media
Product Disposal	Slurry Blasting Media	Product Disposal	Slurry Blasting Media

## Equipment Notes

- ❑ Remote Staging of Equipment (roadside)
- ❑ Pneumatic Slurry Blaster (Greener Blast Mini)

# Quabbin Stop Log Structure Project Staging & Equipment



# Project Timeline Quabbin Stop Log Structure Est. Start Summer/Fall '21

Reservoir Elevation 526.0  
ft Triggers PROJECT START

## Notes:

- Elevation at crest of Stop Log is 528.0'.
- 2 ft Available Freeboard below Working Platform.
- Estimated 2-3 Week Construction Window.

QUABBIN RESERVOIR ELEVATIONS (FT)												
YEAR	DAY											
	1/1	1/14	1/27	2/9	2/22	3/7	3/20	4/2	4/15	4/28	5/11	5/24
2016	523.66	524.54	526.13	525.02	521.90							
2017	518.63	519.70	522.29	524.26	522.53							
2018	521.79	525.11	527.62	526.97	527.11							
2019	530.27	530.06	530.66	528.91	526.27							
2020	525.75	527.43	529.81	528.61	526.07							
2021	524.95	526.23	526.92	527.14	TBD							

Quabbin Reservoir Elevations (January - October)

