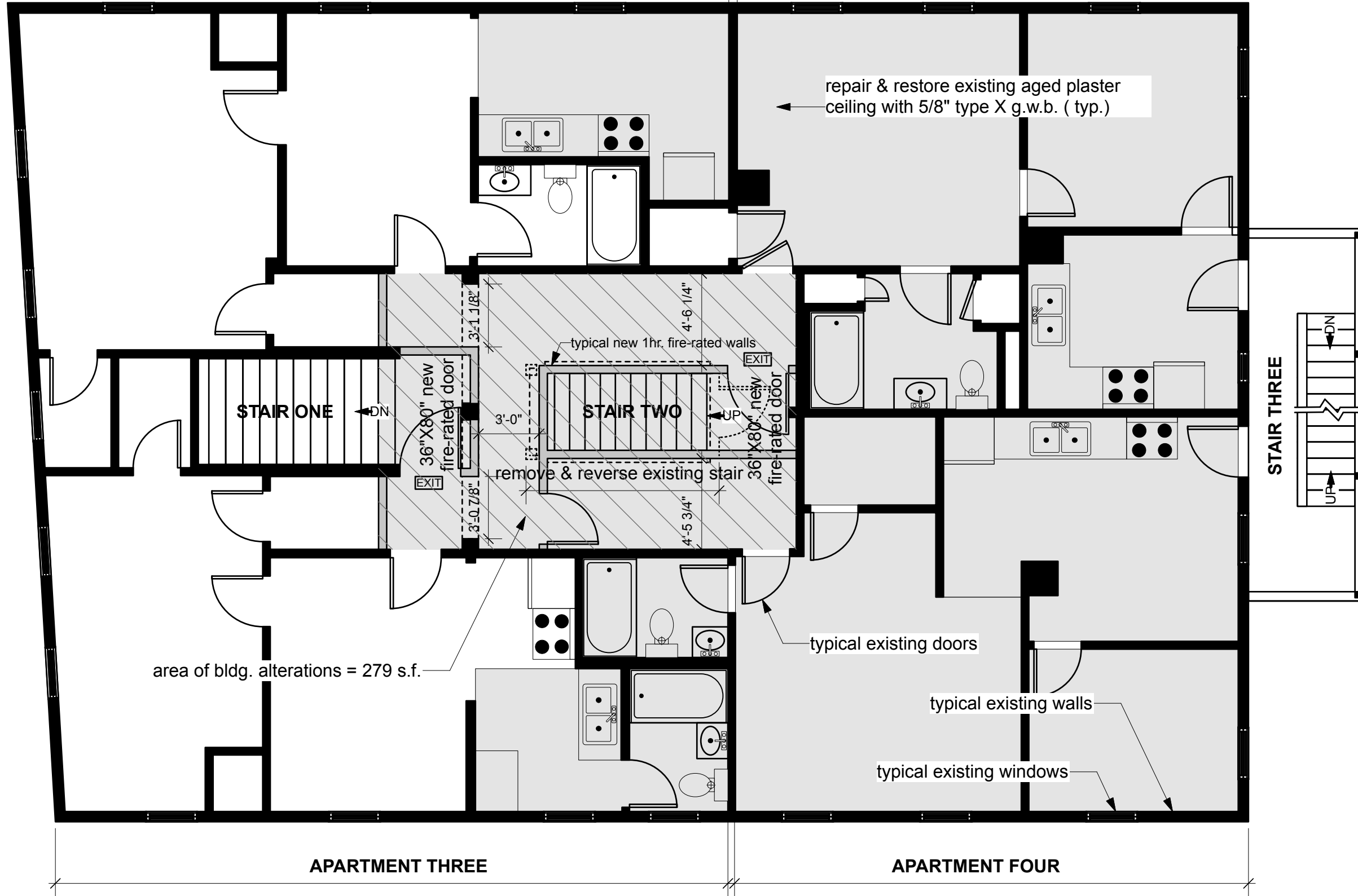


① 1ST FLOOR PROPOSED PLAN  
 1/4" = 1'-0"

APARTMENT ONE

APARTMENT TWO



area of bldg. alterations = 279 s.f.

repair & restore existing aged plaster ceiling with 5/8" type X g.w.b. (typ.)

typical new 1hr. fire-rated walls

36" X 80" new fire-rated door

remove & reverse existing stair

36" X 80" new fire-rated door

STAIR ONE

STAIR TWO

STAIR THREE

typical existing doors

typical existing walls

typical existing windows

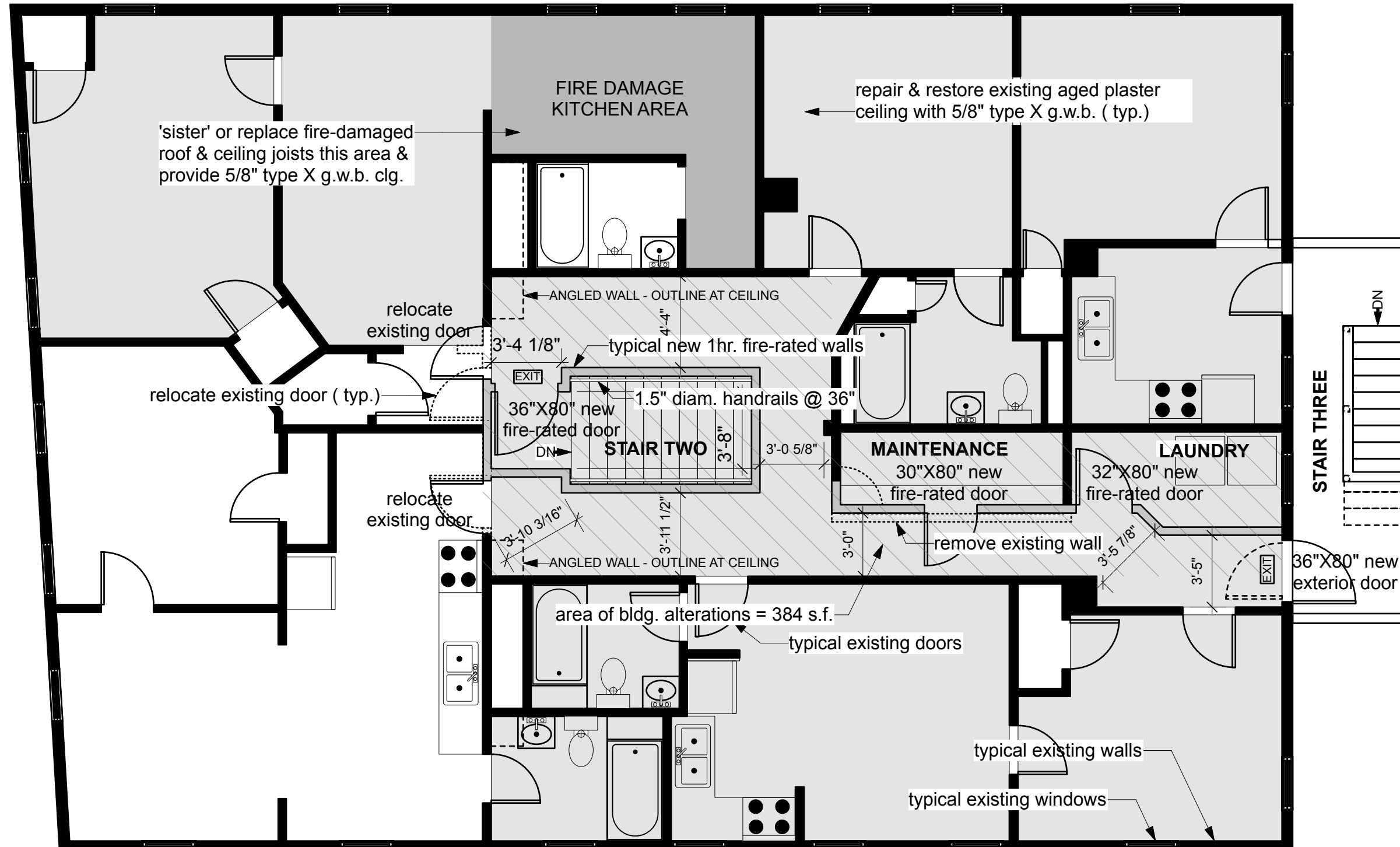
APARTMENT THREE

APARTMENT FOUR

EXISTING SECOND FLOOR PLAN

APARTMENT FIVE

APARTMENT SIX



EXISTING THIRD FLOOR PLAN