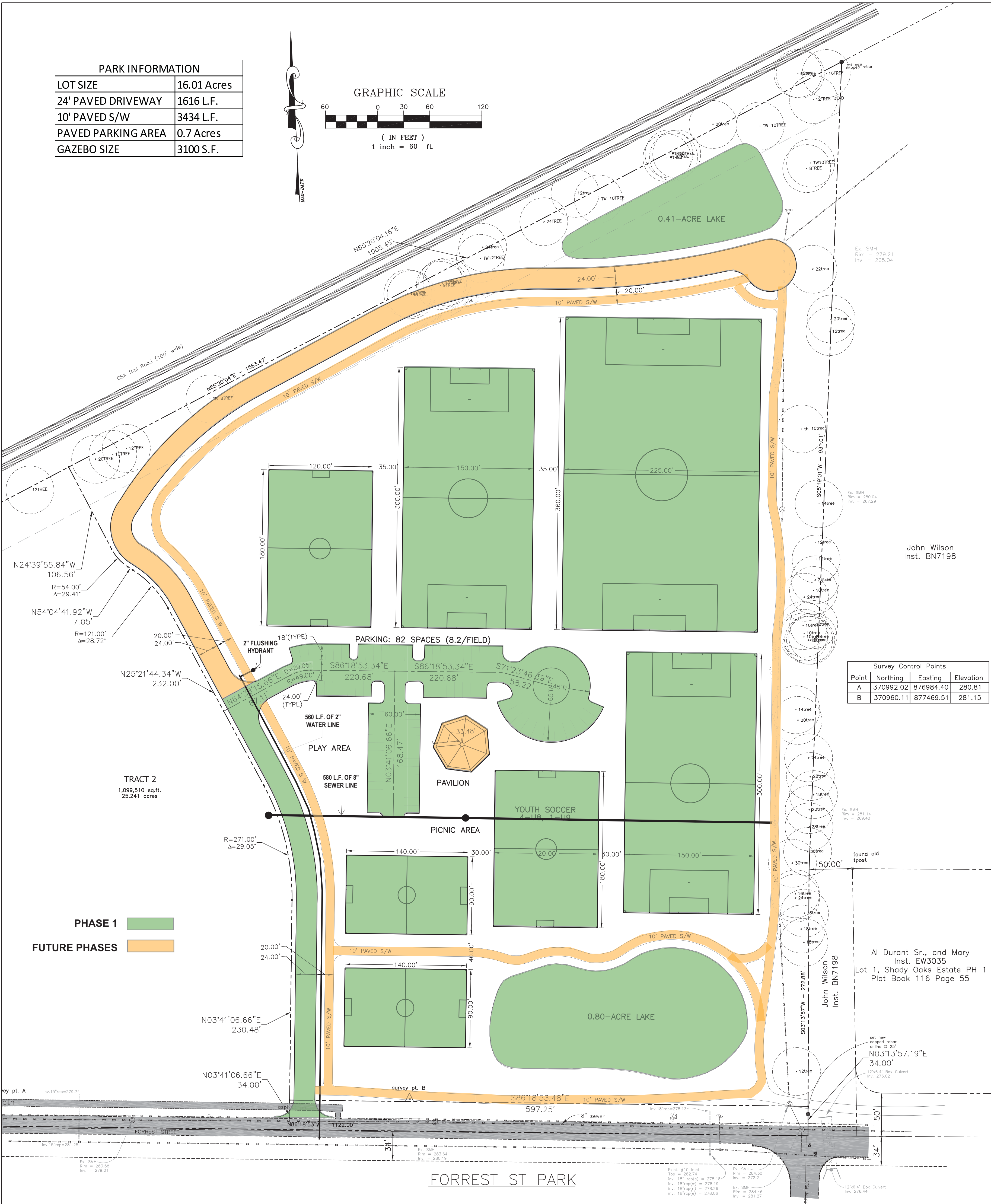
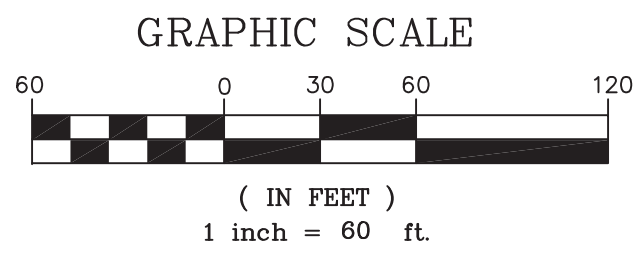


PARK INFORMATION	
LOT SIZE	16.01 Acres
24' PAVED DRIVEWAY	1616 L.F.
10' PAVED S/W	3434 L.F.
PAVED PARKING AREA	0.7 Acres
GAZEBO SIZE	3100 S.F.



Survey Control Points			
Point	Northing	Easting	Elevation
A	370992.02	876984.40	280.81
B	370960.11	877469.51	281.15

John Wilson  
Inst. BN7198

Al Durant Sr., and Mary  
Inst. EW3035  
Lot 1, Shady Oaks Estate PH 1  
Plat Book 116 Page 55

FORREST ST PARK

**PHASE 1**   
**FUTURE PHASES**

TRACT 2  
1,099,510 sq.ft.  
25.241 acres

Ex. SMH  
Rim = 279.21  
Inv. = 265.04

Ex. SMH  
Rim = 280.04  
Inv. = 267.29

Ex. SMH  
Rim = 281.14  
Inv. = 269.40

set new  
capped rebar  
online @ 25'  
N03°13'57.19"E  
34.00'  
12"x6.4" Box Culvert  
Inv. 276.02

12"x6.4" Box Culvert  
Inv. 276.44

Exit: #10 Inlet  
Top = 282.74  
Inv. 18" rcp(s) = 278.18  
Inv. 18" rcp(w) = 278.19  
Inv. 18" rcp(e) = 278.26  
Inv. 18" rcp(s) = 278.06  
Ex. SMH  
Rim = 284.46  
Inv. = 281.27

Ex. SMH  
Rim = 283.58  
Inv. = 279.01

Ex. SMH  
Rim = 283.64  
Inv. = 280.19

Survey pt. A  
Inv. 15" rcp = 279.74

Survey pt. B

found old  
tpost