

# City of Albion Parks and Recreation Comprehensive Plan 2022 - 2026



Fall 2021

## **ALBION CITY COUNCIL**

Victoria Snyder, Mayor

Lenn Reid

Marcola Lawler

Nora Jackson

Linda LaNoue

Donivan Williams

Shane Williamson

## **ALBION PLANNING COMMISSION**

George Strander, Chairperson

Thomas Pitt

Joseph Verbeke

Mark Lelle

Sharon Ponds

Scott Kipp

Albert Amos

Lenn Reid

Victoria Snyder

## **PARKS AND RECREATION ADVISORY COMMISSION**

Mark Lelle

Lenn Reid

Andrew French

Paul Kohen

Nora Jackson

Christine Thomas

## **STAFF**

Haley Snyder, City Manager

Patrick Miller, Director of Public Services

Kevin O'Brien, Superintendent of Public Services

Cullen Harkness, City Attorney

Donisha Brewer, Programming Manager

## TABLE OF CONTENTS

EXECUTIVE SUMMARY	3
COMMUNITY DESCRIPTIONS	4
DEVELOPMENT HISTORY	5
NATURAL CONTEXT AND PHYSICAL FEATURES	6
SOCIAL CHARACTERISTICS	7
ADMINISTRATIVE STRUCTURE	8
DESCRIPTION OF THE PLANNING PROCESS	8
PARKS AND RECREATION FUNDING	9
RECREATION AND RESOURCE INVENTORY	9
DESCRIPTION OF RECREATION PROGRAMS	10
MINI—PARKS – 1 ACRE OR LESS	11
NEIGHBORHOOD PARK / PLAYGROUND 15+ ACRES	12
COMMUNITY PARK – 25+ ACRES	14
SPECIAL USE PARKS	15
LINEAR PARKS	17
SPECIAL USE – UNOFFICIAL PARKS	18
SIGNIFICANT NON-CITY OPERATED RECREATION FACILITIES/OPPORTUNITIES	19
LOCAL ADVISORY COMMITTEES	22
GOALS AND OBJECTIVES	23
ACTION PLAN	26

## APPENDICIES

A - FUNDING SOURCES	27
B - COMMUNITY CENTER STUDY CONCLUSIONS 2002	30
C - PUBLIC INPUT	31
D - ORGANIZATIONAL CHART	32
E - RECREATION BUDGET	33
F – RESOLUTION	34
G – NOTICE	35
H – MEETING MINUTES	36
I – PREVIOUS DNR GRANTS	37

## Executive Summary

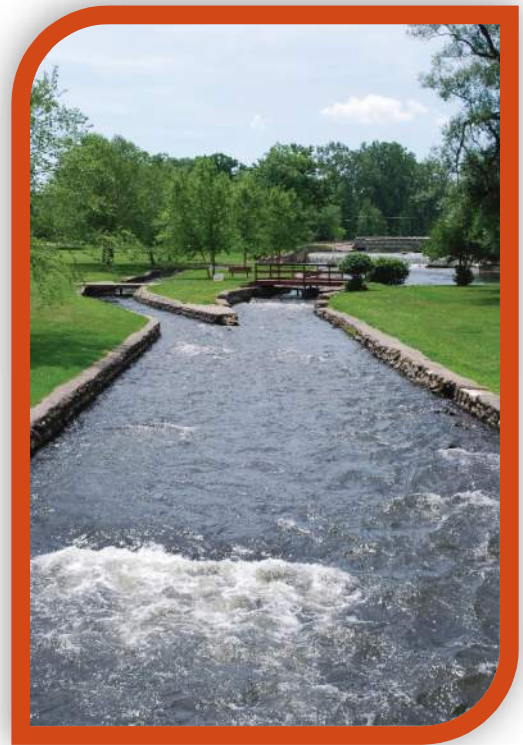
The City of Albion, Michigan is committed to enhancing the quality of life of its citizens through the continued maintenance, enhancement and development of its parks and recreation system. The City of Albion Parks and Recreation Comprehensive Plan 2022-2026 serves as a guide for the continued development of public parks, recreation, open spaces and greenways throughout the community.

The Michigan Department of Natural Resources (MDNR) requires that an approved 5-year Community Recreation Plan be in place in order for communities to be eligible to apply for grant funding. This plan will make the city eligible for these grants, assisting our efforts to reach our parks and recreation goals.

The 2022-2026 Parks and Recreation Comprehensive Plan for the City of Albion focuses on the following goals:

- A) Provide adequate facilities for outdoor athletics and recreation by improving parks, recreation properties, facilities, and equipment, with an emphasis on ensuring ample recreational opportunities within walking distance of low-income neighborhoods. Address safety standards and security at all recreational facilities as well as handicap accessibility in all parks, including access and equipment.
- B) Develop Parks and Programming.
- C) Provide for preservation and recreational use of the Kalamazoo River and Albion River Trail.
- D) Provide for comprehensive and shared recreational programming and facilities including cultural, educational, recreational, and social programs for all ages.
- E) Provide attractive entrances to the city with landscaping and welcome signs that provide consistent branding. (Basis: Partners for Progress, public comment, Project Rising Tide, Planning Team recommendation.)
- F) Promote recreation programs and park facilities. (Basis: Focus groups, public comment, Planning Team recommendation, Parks and Recreation Survey)

The planning process involved gathering background information about the City of Albion, including location, history, and social characteristics, as well as conducting an inventory and assessment of existing facilities. Public input through surveys, and supported by goals outlined in previous plans, was used to guide the development of the current plan's Goals and Objectives and Action Program/Capital Improvement Plan. The 2022-2026 Parks and Recreation Comprehensive Plan addresses those improvements and enhancements that best address the needs of the community.



## Community Description

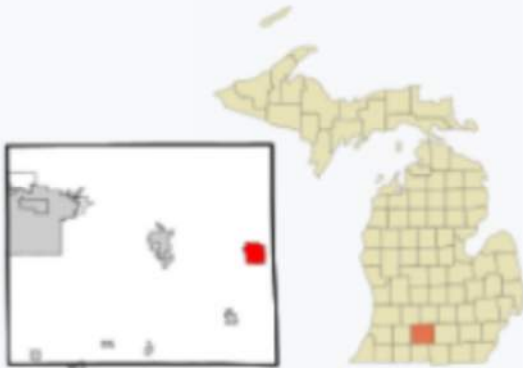
### Regional Context

The City of Albion comprises 4.51 square miles and is located immediately South of the I-94 corridor in the eastern portion of Calhoun County. The city is bordered by Albion and Sheridan Townships and abuts the Calhoun County/Jackson County Line on the east, I-94 to the North, and the Kalamazoo River to the South. The City of Albion occupies a strategic position within a short driving distance of several major metropolitan centers in the Great Lakes region. Via the interstate highway system, Albion is just 40 miles from Lansing, 53 miles from Ann Arbor and 47 miles from Kalamazoo. On a larger scale it is 86 miles from Grand Rapids, 91 miles from Detroit, 98 miles from Toledo, and 93 miles from Fort Wayne, 175 miles from Chicago, 190 miles from Cleveland. In addition, Interstate 94 provides convenient access to international markets in Canada.

The benefit of Albion's centralized location is exemplified by its proximity to several excellent colleges and universities. Albion College, a private undergraduate liberal arts college, is located within the City of Albion. Additionally, Kellogg Community College has a satellite campus just two miles outside of the city. The following higher education institutions are located within a 30-mile radius: Jackson College, Spring Arbor University, Kellogg Community College main campus, Miller College, Olivet College, Hillsdale College and Baker College. Several additional universities and colleges are within an approximate drive of one hour. These include the University of Michigan, Michigan State University, Western Michigan University, Kalamazoo College, and Eastern Michigan University.

### Albion

#### City



Location of Albion, Michigan

Coordinates:  42°14'48"N 84°45'12"W

Country	United States
State	Michigan
County	Calhoun
Area <sup>[1]</sup>	
• Total	4.50 sq mi (11.66 km <sup>2</sup> )
• Land	4.41 sq mi (11.42 km <sup>2</sup> )
• Water	0.09 sq mi (0.24 km <sup>2</sup> )
Elevation	951 ft (290 m)
Population (2010) <sup>[2]</sup>	
• Total	8,616
• Estimate (2019) <sup>[3]</sup>	8,402
• Density	1,905.65/sq mi (735.85/km <sup>2</sup> )
Time zone	UTC-5 (Eastern (EST))
• Summer (DST)	UTC-4 (EDT)
ZIP code	49224
Area code(s)	517
FIPS code	26-00980 <sup>[4]</sup>
GNIS feature ID	0619906 <sup>[5]</sup>

## Development History

Through its evolution from a small mill community developed along the banks of the Kalamazoo River to a regional industrial center, Albion fittingly serves as a microcosm of the industrial cities of the Northeast and Midwest. Despite its small size, the experience of Albion during the latter half of the 20th Century closely mirrors that of countless other cities several times its size. From its pre-industrial origins to Urban Renewal, to the post-industrial era, in many ways the story of Albion is the story of the industrial Midwest. However, the city's unique history is physically manifested in the arrangement of its streets and buildings and their relationship to the city's major geographical features. It is these features which capture the essence of the city and define its physical character.

Albion was founded near the banks of the Kalamazoo River during the mid-1800s. Early mill operations located near the "Forks" formed the original nucleus of the settlement, which subsequently developed in a northward direction, out of the Floodplain and toward (what was then) the Territorial Road and the Michigan Central Railway. To this day, the city has a distinct north-south orientation, accentuated for the past several decades by the "gravitational pull" of I-94 developed in the mid-1950s.

Typical of most North American cities, Albion was laid out in grid form, and punctuated by a small number of radial streets which probably originated as early Native American trails and trade routes. The points at which these diagonal streets intersect the main street grid form neighborhood focal points (i.e., Five Points) and serve as distinct physical landmarks.

Superior Street forms the main axis of the City's central business district and runs in a north-south direction. Downtown Albion (i.e., Superior Street) is generally an in-tact collection of handsome turn-of-Century commercial buildings, approximately 4 blocks long and one block wide. The scale is modest (three to five stories) and pedestrian oriented.

The City's most intensive period of growth occurred in the post-war era when its population topped out at approximately 14,000 residents at around 1950. Post war development generally took place on the periphery of the central city in the form of suburban ranch and bungalow housing. This development was at its most intense northeast of the central city. Urban renewal activities in the 1960s laid bare several acres of land on the west side of town that remain largely vacant. Industrial land is found mostly north of the river and west of downtown.



The City of Albion owns and maintains approximately 100 acres of parks and trails. The 17 developed city parks range in size and scale from mini-pocket parks to the nearly 40-acre Victory Park, complete with its WPA Bandshell. The facilities and amenities provided in these parks include a range of options, such as playgrounds, canoeing, ball fields, basketball courts, shuffleboard, and disc golf. The City also maintains five properties (not all are owned by the city) that have not been designated permanent parks or open spaces but are being utilized in this fashion. These include a dog park, memorial garden, and landscaped greenspaces. Finally, the 1.6-mile Albion River Trail along the Kalamazoo River bisects the city from Victory Park to Harris Field.



## Natural Context and Physical Features

The city is endowed with many natural and geographical features which contribute favorably to its ambiance. These include the gentle hills and bluffs which afford interesting views of the city, surrounding landscape, and the confluence of the two branches of the Kalamazoo River near the center of the city. The Kalamazoo River bisects Albion from the northwest to the Southeast and has affected the historical development of the City with respect to employment, early business locations, environmental issues, street layout and land use. In addition, the river provides a strong southern border and is a substantial asset to the area for its natural aesthetic quality, open space and recreational benefits.

Albion is also fortunate to possess a number of physical assets which lend it a strong visual imagery. This includes a cohesive downtown streetscape of well-preserved older buildings grouped along a traditional commercial thoroughfare. Street and sidewalk enhancements, done as part of the city's selection as a State "Main Street" community, and the church steeples which "bookend" the street and give it a well-defined beginning and end, provide a solid focus for the downtown. Significant buildings in the downtown include the Bohm Theatre, Railroad Depot, City Hall, Mary Sheldon Ismon House, and the Public Library.

The campus of Albion College is a handsome collection of architecturally significant buildings which lends the city an air of culture and repose. Historic preservation activities along Superior Street and Irwin Avenue and in other scattered parts of the city give the city an architectural richness and provide a direct visual connection to its past.

### Floodplains and Wetlands

Over the years, the Kalamazoo River has carved a floodplain along its riverbanks. The Federal Emergency Management Agency has mapped these areas, which are normally dry but are expected to flood at least once every 100 years due to river overflow or surface water accumulation. The base flood level ranges from a 943-foot elevation at the City's eastern boundary near the Whitehouse Nature Center to 937 feet at Superior Street and 931 feet at the western City limits. Development proposed for land within this area should be restricted or planned to minimize the impact of flooding on development. The majority of this floodplain shall be preserved as open space or park land to minimize the harmful effect of flooding.

Wetlands are saturated areas which include swamps, marshes, bogs, wet meadows, mud flats, and natural ponds. They are beneficial because they filter, store, and recharge groundwater; serve as a buffer for flood control; nurture wildlife such as waterfowl and fish; purify water and produce oxygen; and often serve as recreational locations. Therefore, consistent with state and federal initiatives, development within areas affecting Albion's wetlands should be discouraged. The two most significant wetlands in the city are located south of the Kalamazoo River at the City's western boundary, and east of the Albion College athletic facility near the Whitehouse Nature Center.

### Soils

Surveys completed in conjunction with the 1964 Albion Comprehensive Plan categorized soils within the following three general classifications: sandy clay and loam, sandy loam with gravel clay base, and undulating sandy loam. In general, the northern half of the city consists of level sandy loam fixed with a sandy and gravelly clay subsoil.

The soils vary from well-drained loams to small regions of poorly drained soils. The region is mainly level with some short, steep slopes next to the marshy areas. The southern half of the city is a sandy loam with a sandy clay subsoil. Erosion is light to moderate due to the more pronounced slope characteristic of the area.

## Social Characteristics

### City Population

**Albion** is a city in Calhoun County in the southcentral region of the Lower Peninsula of the U.S. state of Michigan. The population was 7,700 at the 2020 census and is part of the Battle Creek Metropolitan Statistical Area. Continuing a trend which began in the 1960s, Albion saw a decrease in population during the 2010s as shown in Table 1. It should be noted however, that the City's population figures and the trends they represent have historically been distorted by the nuances of census reporting, specifically the inclusion of the volatile college student population in some census counts and the exclusion during other census counts. Ultimately, however, there has been a steady decrease in the population over the past six decades.

In 2020, the population of the city of Albion was 7,700, representing a 10.63% decrease in the number of people living in the city since 2010.

**Table 1: Pop. Change 1940-2020**

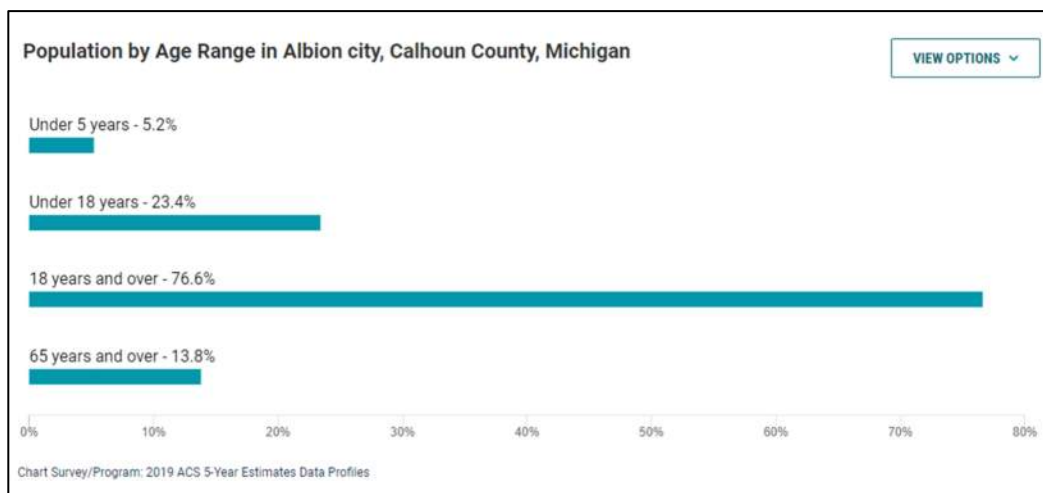
\*Source: U.S. Census

Year	Population	% Change
1940	8,345	3.00%
1950	10,406	24.70%
1960	12,749	22.52%
1970	12,112	-5.00%
1980	11,059	-8.69%
1990	10,066	-8.98%
2000	9,144	-10.02%
2010	8,616	-5.77%
2020	7,700	-10.63%

### Age Structure

**Table 2: Population by Age**

Age characteristics are a useful demographic indicator for recreation planning purposes, as a community's age composition helps determine the appropriate mix of needed recreation services and facilities. The types and location of recreation facilities and programs will depend, in part, upon the age



structure of the population. The following table (Table 2) breaks down the various age groups using data from the 2020 Census.

### Persons with Disabilities

The 2014-2019 American Community 5-Year Survey estimates 11.8% of the population under 18 years of age, 32.2% of the population 18-64 years of age, and 67% of the population 65+ years of age are reported to have a disability. Title II of the American with Disabilities Act (ADA), which took effect in 1992, prohibits discrimination, both intentional and unintentional, against individuals with disabilities in all programs, activities, and services provided by public entities. It applies to all state and local governments, their departments, agencies, or special purpose districts of state or local governments.

The implications of ADA for the City of Albion are significant. Parking lots, sidewalks, picnic tables, play equipment, playground surfaces, wayfinding and other recreation facilities within parks must be examined regularly to determine if their design creates a barrier that prevents use by all segments of the population. Programs must be examined to be certain they provide recreation and leisure opportunities to all residents, regardless of their social, economic, or physical status.



## Administrative Structure

The City of Albion's Recreation Department is administered by the City Manager. The COVID-19 pandemic had a significant impact on the functions of the City of Albion's Recreation Department. In 2021, the City of Albion entered into a service agreement with the Battle Creek YMCA to manage recreation programming for the Albion community. The Battle Creek YMCA handles the initial planning, program development, and day-to-day administration of the Recreation programs, activities, and special events.

The Recreation Department's mission is to provide leisure services to all segments of the community. Based on demand, the primary emphasis is on recreational activities geared to various ages within the community and that provide a blend of cultural, recreational and entertainment related activities. The Recreation Department is funded by a millage.

The parks in the City of Albion are administered by the Superintendent of the Department of Public Services, who oversees Parks, Cemetery, and Forestry. The Parks Unit staff consists of two full-time maintenance personnel, plus seasonal labor in the summer months.

The Parks Division responsibilities include maintaining nineteen parks for a total of nearly ninety acres, plus Stoffer Plaza, the grounds of City Hall, Transportation Center, Albion District Library, City parking lots and several street boulevards. Structures in the parks include picnic shelters, a band shell, a farmer's market, a skating shelter, restroom buildings, a concession building, a press box, a recreation pavilion and two maintenance buildings.

In 2019, the Albion City Council Approved Ordinance #2019-11, an ordinance to establish the City of Albion Recreation Advisory Commission. The duties of the commission include, but not limited to, reviewing the annual budget for the recreation department, and providing recommendations thereon, reviewing and making recommendations regarding bond proposals and capital improvements, reviewing fees for the recreation department, and making recommendations thereon.

Program planning and administration for Parks and Recreation in Albion is conducted at several levels. Initial planning recommendations, program development and day-to-day administration of the Parks and Recreation Programs are handled by the respective administrators and the city's Parks and Recreation Advisory Commission. They also recommend capital improvements to the Planning Commission, which has the responsibility to formulate a capital-improvement program (CIP). The Planning Commission reviews may make recommendations to the City Council on the capital improvements budget (CIB).

## Description of the Planning Process

Albion's Parks and Recreation Plan was last updated in 2015 and was a basic update of the previous two five-year plans, which used the 2000 Comprehensive Plan for the Community as their basis. This plan is being updated concurrently with a revised Comprehensive Plan.

The Parks and Recreation Advisory Commission, City Staff and a Consultant worked to develop this updated plan. The public was involved through on-line surveys. Previous plans were also consulted, and relevant information was incorporated into this plan.

The City of Albion also collaborates with the Calhoun County Recreation Plan, Iron Belle Trail Regional Coordinating Committee, and Michigan Trails and Greenways Alliance on future recreation and trailway plans.

## Parks and Recreation Funding

The funding for operating the city's parks system comes from the city's annual General Fund appropriation. Acquisition and development projects are typically funded through federal, state, private and community foundation grants, with matching funds coming from the City's Capital Improvement Fund, which comes from the city's General Fund as well as donations and other grants.

The annual budgets for both Parks and Recreation are drawn up by the City Manager in consultation with the City's Finance Director and presented to City Council after reviewing the recommendations of the Director of Public Services, which has oversight of the Parks Division, and the Recreation Advisory Commission. The City Manager presents the recommended budget. The final budgetary decisions rest with the City Council, following a period for public input and a public hearing.

General Fund: The General Fund is the basic operating fund for the City of Albion. It was also the traditional source of operating funds for Parks and Recreation. General Fund revenues were derived from property taxes, state-shared revenues, federal grants, license and permit fees, charges for services, interest on investments, etc. Due to decreasing General Fund revenues, the Recreation Department budget was eliminated from the General Fund Budget and was replaced by a recreation millage. Parks remain funded by the General Fund.

User Fees: User fees are charged for facility use (i.e., picnic shelters and pavilions) as well as for participation in recreational programs.

Recreation Millage: In 2020, the residents of the City of Albion approved the renewal of a special recreation millage of 2 mills for 3 years dedicated to the operation of recreation programs for the City of Albion. The current millage expires in 2024.

Calhoun County Parks Millage: On August 4, 2020, the residents of Calhoun County approved a parks millage of 0.2 mills for 5 years to be used to operate, preserve, acquire, maintain, and develop parks in Calhoun County. The five-year millage is expected to generate \$730,000 per year. Half of the money will go towards county parks and the rest of the money will be made available to all municipalities in Calhoun County for local park projects.

Grants: The Department's budget is supplemented by outside grants from private, public, state, and federal sources.

## Recreation and Resource Inventory

An inventory of existing parks was conducted in November 2021. The physical inventory of local facilities consisted of site inspections of all City parks and recreation sites. An inventory of playground equipment and park facilities was recorded and reviewed with regard to location, acreage, quantity, quality, accessibility and condition. These facilities are organized as a Mini-Park (1 acre or less); Neighborhood Park/Playground (15+ acres); Community Park (25+ acres); as well as linear parks, special uses, and conservancy. In addition to an assessment of local parks and city-run recreational programs, we have included a summary of facilities and programs present in the community but operated by nonprofit or private entities. Please refer to the Calhoun County Parks and Recreation Comprehensive Plan for non-local parks and recreational opportunities.

## **DESCRIPTION OF RECREATION PROGRAMS**

**Albion Recreation Department:** The Albion Recreation Departments mission is to provide recreational activities for all segments of the community. Through partnerships with other organizations within the community and the surrounding areas we are able to provide services to our residents. Many of our programs and activities take place either in City parks or at the Marshall Opportunity School.

### **CITY OF ALBION RECREATION PROGRAMS INVENTORY**

<b><u>Y Fitness Classes</u></b>	<b><u>Misc. Programs</u></b>
Fitness & Feature Cardio Drumming Ball, Band & Core Zumba Yoga Flow Barre Y Pump Step Aerobics Water Aerobics Dance Water Aerobics Silverstars Dance Fitness Step	Easter Egg Hunt Holland Park Summer Camp Kids N Stuff Summer Camp T-Ball Baseball Play Right Academy Difference Makers Begin to Swim Lessons Choose to Lose Weight Loss Program Open Swim Gospel Aerobics Espresso Yourself Meet & Greet Community Bike Ride Program

The goal of the Albion Recreation Department is to provide a full range of leisure time activities on a year-round basis geared toward the physical, psychological, social and emotional wellbeing of the citizens who reside within the city's boundaries. Many of the programming options are made possible through the collaborative efforts of partners within the community and surrounding areas.

## Mini-Parks - 1 acre or less

### Bournelis Park

**Location:** NE Corner of Cass St. and Superior St.

**Acreage:** 0.1

**Amenities:** Benches, fishing, river trail access, flower bed, memorial plaque.

**Accessibility Status:**  
Most of park facility meets.

#### Description:

Bournelis Park provides a shady rest-stop for downtown workers. It overlooks the river, the historic Cass Street bridge, and the restored historic Coca Cola sign. The Park is named for Pete Bournelis who operated a shoe repair shop at this corner for 44 years. (Located in neighborhood 13.) The park has recently been updated with signage and improved accessibility.



**Recommendations:** Provide visual link with Stoffer Plaza, open the view to the river, and add shaded seating.

### Molder Park

**Location:** SW Corner of Superior St. and Michigan Ave.

**Acreage:** 0.1

**Amenities:** Benches

**Accessibility Status:**  
Most of park facility meets.

#### Description:

Molder Park is a greenspace near downtown Albion. Named for "The American Molder," it has a bronze statue commemorating Albion's laborer in the foundries (circa 1974). The statue is said to be modeled after a photograph of John Passmore, a molder at Gale Manufacturing and Ideal Castings. Its highly visible location provides space for the community Christmas tree and the United Way fund drive sign.



**Recommendations:** improve sidewalk material

### Porter Street Canoe Dock

**Location:** Between the Kalamazoo River at Stoffer Plaza and South Monroe St.

**Amenities:** Canoe launch

**Accessibility Status:**  
Most of the facilities/ park meet accessibility guidelines. Street access is available, River Trail is accessible and canoe launch is moderately accessible.

#### Description:

Porter Park is a green space where a pedestrian bridge crosses the Kalamazoo River connecting the Central Business District to the outlying neighborhood and Albion College campus to the east. An official Albion River Trail canoe launch site was established in 2003. The access site is about 100 yards from the parking lot and is accessed by walking across the bridge and turning left to the river. The launch site is small. Distance to Stuart's Landing is about 12.6 miles. Just down-stream the river runs underneath the city of Albion's downtown for a short distance.



**Recommendations:** Improve signage and add directional signage along river trail directing to Porter Park.

## Neighborhood Park/ Playground 15+ Acres

### Harris Field

**Location:** 790 W. Cass Street

**Amenities:** Picnic tables, playground, concession stand, grill, and restrooms.

**Accessibility Status:** Some of the facilities/park meet accessibility guidelines, restrooms are not accessible, general areas accessible only over grass or gravel.

**Description:** This 5.1-acre park on Albion's west side includes a lighted baseball field, a concession stand, a picnic area and a playground. Restrooms are available also. Harris Field is located at the end of the river trail. Park is used for both baseball and softball.

**Recommendations:** Playground only has swings remaining, are usable, but in poor condition and don't meet safety standards. Fields can be improved if there are plans to use them. Fence could be secured; bathrooms and concession area could be updated. Accessible routes should be added.



### Ketchum Field

**Location:** 1000 East North Street

**Amenities:** Picnic tables, playground, concession stand, and restrooms.

**Accessibility Status:** Some of the facilities/park meet accessibility guidelines, restrooms are accessible, some facilities are accessible but over grass or gravel.

**Description:** Located on Albion's east side, Ketchum Field's 4.4 acres include a lighted softball field, a concession stand, a playground, a volleyball court and a basketball court. Restrooms are available.

**Recommendations:** Volleyball court is overgrown; fields could be improved. Playground equipment needs to be updated and does not meet safety standards.



### McAuliffe Park

**Location:** SW Corner of Albion St. and Austin Ave.

**Amenities:** Picnic tables and grills, ball fields, basketball court, playground restrooms, benches.

**Accessibility Status:** None of the facilities/ park meet accessibility guidelines. Restrooms are not accessible, some minimal access but over grass lawn areas.

**Description:** Nearly 10-acre park includes baseball field, basketball court, picnic area, playground, flower garden and restrooms. This heavily used park, next to the former Harvard Industries, features 10 acres for passive and active recreation. The park was named for former Mayor Daniel M. McAuliffe. Restrooms are available. An extension of the city's trail system is being installed through the park.

**Recommendations:** Upgrade playground equipment, repair fence at ball field, add benches, add accessible routes through the site.





## McIntosh Park

**Location:** State Street and Hoaglin Drive

**Amenities:** Sandlot ball field, playground, picnic shelter, basketball court, drinking fountain, and restrooms.

**Accessibility Status:** Some of the facilities/park meet accessibility guidelines. Limited Access from street to restrooms, restrooms are not accessible, some facilities may be accessible, but over grass lawn areas.

**Description:** McIntosh Park provides over eleven acres of recreational amenities. Named for James McIntosh, Albion's first African American councilman, McIntosh Park is located at State Street and Hoaglin Drive and has basketball courts, a picnic shelter, a playground, and a sandlot ballfield. Restrooms are available.

**Recommendations:** Playground equipment does not meet current safety standards. A walking path through the park is recommended. Prior to making any recommended changes, a soil/environmental assessment should be conducted. Bathrooms need upgrading and do not feel safe due to their orientation. This park serves one of the lowest income neighborhoods in the city and badly needs to be upgraded to meet the needs of the neighborhood.



## Holland Park

**Location:** NE Corner of Albion and Cass St.

**Amenities:** Playground, children's garden, pavilion, restrooms, basketball courts, benches, drinking fountain, fitness equipment, and picnic tables.

**Accessibility:** Some of the facilities/park meet accessibility guidelines. Restrooms are accessible, no access from street or parking areas, some facilities are accessible over grass lawn areas.

**Description:** Built on the old West Ward School site, Holland Park's 6.4 acres offer basketball and tennis courts, a picnic shelter, a playground, and a memorial to Robert Holland, Sr., who was instrumental in abolishing segregation in Albion. A restroom is available. A new pavilion and outdoor fitness equipment were recently added.

**Recommendations:** a multi-phase plan has been developed for upgrades to the park, the first phases have been completed. See Action Program Plan.





## Community Park – 25+ Acres

### Victory Park/ Rieger Park

#### Location:

Victory Park: Located along the south and north branches of the Kalamazoo River, between Haven Rd and Hannah St.

Rieger Park: Located along the west side of the Kalamazoo River from Haven Road to Erie Street.

**Amenities:** Bandshell, playgrounds, pavilions, disc golf, warming shelter, pond, shuffleboard, baseball, benches, basketball courts, bicycle racks, bleachers, fishing, observation deck across from pond.

#### Accessibility:

Victory Park: Some of the facilities/park meet accessibility guidelines. Large play scape is accessible, some other facilities are accessible, but over grass lawn areas, restrooms are not accessible, picnic shelters are not accessible.

Rieger Park: Most of the facilities/ park meet accessibility guidelines. Park pond and warming facility are accessible, shuffleboard courts and other facilities are accessible but over grass lawn areas. Albion River Trail is accessible in this area.

**Description:** Covering 48 acres just south of downtown Albion, these adjoining riverbank parks include a waterfall, a wooded area, a natural spring, and a formal garden.

Victory Park (38 acres) was named at the conclusion of World War I.

Recreation offerings include the Victory for Kids playground (constructed in a community build in 2003), band shell, baseball and football fields, a popular disc golf course, basketball and volleyball, a sledding hill, a fitness trail and a recreation pavilion. Restrooms are available. The recreation pavilion may be rented for use by groups or individuals.



Rieger Park (10 acres) was named for Hugo A. Rieger. It is located along the west side of the Kalamazoo River from Haven Road to Erie Street.



The Park has a warming shelter that includes restrooms and changing rooms for the swimming pond and beach. Shuffleboard courts are located just off of South Ionia Street adjacent to a Parks Department garage and restroom. Site can be used for winter ice skating.

**Recommendations:** Band shell needs to be assessed for structural integrity. Playground equipment in area 2 does not meet current safety guidelines. Dam and related old mill ruins and stone structures should be reviewed as part of the envisioned dam removal plan. Grills in the picnic area and full-court basketball should be upgraded. Pond debris needs to be addressed. Additional parking is needed to meet the use patterns of the park.

## Special Use Parks

### Barnes Park

**Location:** Located along the river next to Water Street.

**Amenities:** Beach, river access, picnic table, dock.

**Accessibility:** Some of the facilities/park meet accessibility guidelines, no access from street, limited access to facilities but over grass lawn areas.

**Description:** West of Superior Street along Water Street, Barnes Park has a fishing pier, a boat launch and picnic areas. The park is named for Truman Barnes, a longtime advocate of river clean-up. Highlighted by beautiful views of the Mill Pond, it is visited each year by hundreds of migrating waterfowl.

**Recommendations:** Park has picnic areas and a boat launch, but the dock needs to be replaced. Consider adding a canoe/kayak launch at this location. Grills would increase the use of the park. The river has been dredged in the past but has filled in with silt.



### Crowell Park

**Location:** Between N. Superior and Clinton Streets

**Amenities:** Water tower

**Accessibility:** Some of the facilities/park meets accessibility guidelines. Park area is accessible from street and parking lot, there are no facilities in the park.

**Description:** Crowell Park is an open space park of two acres located on North Superior Street. One of Albion's first parks, the land was donated by Jesse Crowell and named Washington Park for the nation's first president. It was later renamed Crowell Park. Displayed in the park is the cornerstone from the 1845 stone mill at the current First Merit location, downtown. Crowell's hilltop location overlooks downtown and the historic Christ Apostolic Church, erected in 1884. The park is also the location of the City's water storage tower.

**Recommendations:** Would receive more use if seating was available.



### Gold Star Park

**Location:** SW corner of Michigan Avenue and Clark Street

**Amenities:** Memorial

**Accessibility:** None of the facilities/ park meets accessibility guidelines. There are no facilities.

**Description:** Gold Star Park provides an attractive welcome at the east entrance to Albion on Michigan Avenue. It contains a memorial to Albion's military members lost in World War II and Korea. This park, located at Five Points (Michigan Avenue and Clark Street), serves as a memorial to local lives lost in war. A River Birch Tree in honor of Viola Liuzzo, slain civil-rights advocate, was planted around the year 1993.

**Recommendations:** Would receive more use if seating and pathways were available.



## Lloyd Park

**Location:** Located on E. Cass Street at the Kalamazoo River

**Amenities:** performance deck, river access, tables, benches.

**Accessibility:** None of the facilities/park meets accessibility guidelines, no access from street, limited access to facilities but over grass lawn areas.

**Description:** This riverfront park adjacent to East Cass Street, is named for Thomas Lloyd, founder of the Albion Community Foundation. The park has a wooden platform that extends over the Kalamazoo River. It is frequently used for concerts and as a fishing pier.



**Recommendations:** Improve ADA access to the river and fishing pier.

## McClure Park

**Location:** West of Albion Street along the Kalamazoo River

**Amenities:** River Trail, historic bridge, river access

**Accessibility:** Some of the park meets accessibility guidelines. Street access is available, the river trail is accessible, other facilities accessible over grass lawn areas.

**Description:** Named for former Mayor Jack McClure, the 30 acres of this natural riverfront park feature hiking trails, a picnic area, fishing and a restored train trestle bridge. The park's grounds run from Albion Street near Brownswood Road to the city limits along the north and south sides of the Kalamazoo River.



**Recommendation:** It has been suggested that a cross-country ski trail be developed in this area.

## Stoffer Plaza / Market Place

**Location:** In the marketplace, between Erie, Cass and the Kalamazoo River.

**Amenities:** Farmer's Market pavilion, picnic benches.

**Accessibility:** Most of the facilities/park meets accessibility guidelines, street and parking lot access is available, Albion River Trail is accessible.

**Description:** Stoffer Plaza, named for William R. Stoffer, is located in the marketplace between the river and downtown. It is surrounded by parking for downtown. The plaza is paved with brick trim, features a natural spring, a large outdoor marketplace, and parking for downtown. The Farmer's Market is held in the pavilion (in season) on Wednesdays and Saturday. A pedestrian bridge connects the Plaza to Porter Park.



**Recommendations:** Plaza needs beautification, retaining wall between levels is structurally unsound. Pavilion needs to be painted. The fountain basin could be improved. The structure needs evaluation, as does the wall painting.

## Washington Street Park

**Location:** NW corner of Washington and Eaton Streets on both sides of the Kalamazoo River

**Amenities:** River access, fishing, picnic tables, grills.

**Accessibility:** None of the facilities/park meets accessibility guidelines.

**Description:** This riverside park, bordered by North Eaton, Pearl and Washington Streets and the Kalamazoo River, offers fishing and picnic areas. It is a site of the Albion River Trail and 2014 environmental remediation.

**Recommendations:** Possible location for canoe/kayak landing. Needs bike racks.



## Linear Parks

### Albion River Trail

The Albion River Trails is a 10-foot-wide paved path running 3 miles through Albion. It begins at the edge of Riverside Cemetery where it connects to the paved trail and trailhead of the newly established county park, passes through the Albion College Equestrian Center, follows the Kalamazoo River through Victory and Rieger Parks, passes through downtown Albion, and ends at Harris Field. A recently constructed section begins at McAuliffe Park and follows along the south side of Michigan Avenue to Burstein Drive.

Future plans include extending the trail to the Industrial Park at Industrial Boulevard, connecting the trail to McIntosh Park in the Consumers Energy property along State Street, and connecting the trail to Holland Park via a 14'-wide pedestrian walkway when the Albion Street Bridge is reconstructed. With the exception of handicapped accessible vehicles, this is a non-motorized vehicle trail suitable for walking, running, biking, rollerblading, or skateboarding.

Albion is the nexus of four regional and national trail systems: The Calhoun County Trailway that will eventually connect to the Kalamazoo River Valley Trail to the west and the Falling Waters Trail in Jackson County to our east, the Great Lake to Lake Trail from South Haven to Port Huron, the Iron Belle Trail from Detroit to Ironwood in the Upper Peninsula, and the North Country National Scenic Trail from Vermont to North Dakota.

Albion is already experiencing significant cycling and hiking tourism as a result of being one of the few places in Michigan where these trails converge. Equally important, the Albion River Trail is a valued recreational resource that is widely used by Albion residents.



## Special Use – unofficial parks

### Riverside Cemetery



**Description:** While Riverside Cemetery is not included in the city's park system, it provides a beautiful setting for passive use. It was established in 1837, and overlooks the mill pond, a pleasant site for the fishing and migratory bird watching. Its park-like setting and historic burial markers invite visitors. An interpretive brochure highlights Albion's history.

### Weatherford Garden



**Description:** Owned by the railroad, but maintained by the City and Citizens To Beautify Albion, this memorial garden contains plantings and a bench. The garden is situated between Clinton and Eaton Streets across the railroad tracks from the Albion Train Depot.

### Collaboration Corner



**Description:** Owned by the landbank, this collaborative project of Albion College and the City of Albion shows the unity between the College and community. Benches, paths and raised planting beds are the cornerstone of this park at the corner of Michigan Ave. and Monroe St.

### Albion Dog Park

**Description:** The Albion Dog Park is located at Berrien and Division Streets, on a vacant factory lot. The park needs signs, rules, shading and seating.

## Significant Non-City Operated Recreation and Cultural Facilities/ Opportunities

### Nonprofit Facilities (alphabetical order)

#### Albion College Recreational and Cultural Facilities Inventory

**Albion College:** Albion College, founded by the Methodist Church, is a selective four-year undergraduate institution renowned for its high-quality liberal arts education. Albion College is comprised of a 90-acre main campus, 144-acre Whitehouse Nature Center and 340-acre Held Equestrian Center.

**Kresge Gymnasium** includes the varsity basketball and volleyball court, along with the Ferguson Dance Studio.



**The Dow Recreation and Wellness Center**, located adjacent to Sprankle-Sprandel Stadium, is devoted to educational and recreational purposes, including individual and group sports activities, physical conditioning, and health and wellness programs.

#### The following facilities are part of the Dow Recreation and Wellness Center:

**Ungrodt Tennis Center:** The Ungrodt Tennis Center offers a state-of-the-art, 4-court indoor facility intended to serve Albion College students, faculty, staff, and community members.



**Lomas Fieldhouse:** The Bernard T. Lomas Fieldhouse contains flexible court space for intramural basketball, volleyball, badminton and tennis as well as a 1/9-mile track, two racquetball courts, a weight room, and cardiovascular fitness room.



**Dean Aquatic Center:** The center hosts a T-shaped pool with two diving boards, new starting blocks and lane markers, as well as a hot tub.

**Bobbitt Visual Arts Center:** Opened in 1965, the Center houses studios and lecture rooms of the Department of Visual Arts at Albion College. There are four galleries for the display of traveling exhibition, items for the permanent collection, and work of faculty and students. In addition, the center has facilities available for painting, sculpture,



graphics, and numerous other art forms.

**Whitehouse Nature Center:** The Whitehouse Nature Center is 140 acres' worth of outdoor education, a Visitor's Center, and 5 miles of hiking trails.



**Herrick Center for Speech and Theatre:** Located at the Dow Center along with the Dean Aquatic Center on the Albion College campus, the Herrick Center houses the college theater, drama, and communications programs. The general public is invited to many of the performances.



**Nancy G. Held Equestrian Center:** The Nancy G. Held Equestrian Center offers students not only a quality riding environment, but also comfortable study facilities with wireless Internet technology.



**Albion Community Foundation:** Albion Community Foundation works with the local faith-based community to provide nutrition and physical activity promotion and programming through the statewide SNAP-Ed program.

**Marshall Opportunity School:** Marshall Opportunity School offers a variety of after school and summer programs and makes their facility available for use by the recreation department and community groups. Amenities include pool, track, tennis courts, football field, baseball and softball diamonds, playgrounds, auditoriums for theatrical performances, gymnasiums, and computer labs.

**Albion District Library:** The Albion District Library offers recreational and cultural activities to all ages. Community members may use public meeting rooms, local history resources, educational games, and computers. The Summer Reading Program is a major recreational program for the summer months.

**Bohm Theatre:** The Bohm Theatre provides a variety of film and live entertainment programs for all ages. It is utilized by the Albion 4-H Creative and Expressive Arts Program for their summer performance. Free movies are offered during the summer providing a safe place to go on Friday mornings when other programs are not operating.

**Double Vision Center:** Double Vision is in the process of renovating a former roller-skating rink for use as a community center.

**Forks Senior Center:** Forks Senior Center is a membership-based organization that specializes in serving seniors 60 and older. Membership benefits include a fitness center, exercise classes, lunch and learn, games and social activities, support groups and volunteer opportunities. Non-membership services are offered to the senior community include information and referrals, diabetic foot care, Medicare & Medicaid counseling, and a Senior Meal Site.

**Gardner House Museum:** The Gardner House was built around 1875 by an Albion hardware merchant, Augustus P. Gardner, who came to Michigan from New York in 1837 as a young man. He lived in this Victorian brick house until his death in 1905. The Albion Historical Society purchased the Gardner House in May 1966 from the City of Albion Public Library Board and turned it into a museum. The Albion Historical Society received an Award of Merit from the American Association for State and Local History in 1969 for this Museum. In 1971, it was placed on the National Register of Historical Places.

**Kids at Hope Youth Development Center:** The Center exists to provide a safe and nurturing environment for students and adults involved in youth service organization programs to interact, grow, learn, and succeed in a variety of areas. In order to get students to their life's destinations, the participating youth development organizations understand the Kids at Hope philosophy. The mission of the Center is to provide a space for programs that empowers children and youth of Albion to succeed. No exceptions! No excuses!

**Kids 'N' Stuff Children's Museum:** Kids 'N' Stuff Children's Museum provides fun hands-on learning experiences for all children and families through interactive exhibits and programs.

**Vision of Life:** Vision of Life offers a variety of life skills and recreational programming for the community. Sewing classes are one of their more popular offerings.

## Private Recreation

**Golf Courses:** Albion is provided with several golf courses within a short driving distance. Whiffletree Hill Golf Course, Concord Hills, Duck Lake Country Club and Burr Oak Golf Courses are all within ten miles.

**Rockey's Campground** located just north of Albion, provides a basketball court, mini-golf course, playground, boat launch, swimming beach and hiking trail for campers.

**Duck Lake**, located 10 miles north of Albion, has a DNR-maintained public access point with a boat launch. Nearby DNR public access sites are located at Bell Lake, Prairie Lake and Winnipeg Lake.

**Bowling:** University Lanes, just east of Albion, has 20 lanes and an arcade.

## Walking Tours

Several walking tours have been developed to promote our community

- Albion Art Walk
- Downtown Architectural Scavenger Hunt
- Purple Gang Tour
- Riverside Cemetery Tours
- College Campus Tour

## Community Events

**Several community events provide recreational and entertainment opportunities. These include:**

- Festival of the Forks
- NAACP Back to School Celebration
- Albion Week
- Healthy Babies Day

## Local Advisory Committees

**Riverfront Advisory Committee and Tree Committee:** The Riverfront Advisory Committee of Albion Community Foundation focuses on Riverfront development, maintenance, and use. A primary goal of the committee is the development of a white-water rapids canoe path on the Kalamazoo River and a multi-use linear trail system along the Kalamazoo River. Additionally, a subcommittee of the group addresses tree re-planting in the city right of way.

**The Holland Park Advisory Committee:** The Holland Park Advisory Committee was formed in 2014 to address the deteriorating condition of Holland Park. As of the writing of this plan they have completed a new children's playground, developed a children's garden, are working with the Forks Senior Center on activities for seniors and have secured funding for Heritage Hill, a testimonial to the history of the area and West Ward School.

**Friends of Albion Trails Advisory Committee:** The Friends of Albion Trails Advisory Committee was established to assist the City of Albion with maintaining the Albion River Trail. The group also assists with fundraising and with recommending future trail improvements to make Albion more amenable to cyclists and hikers.

## Goals and Objectives

Goal A: Provide adequate facilities for outdoor athletics and recreation by improving parks, recreation properties, facilities, and equipment, with an emphasis on ensuring ample recreational opportunities within walking distance of low-income neighborhoods. Address safety standards and security at all recreational facilities as well as handicap accessibility in all parks, including access and equipment.

### Objectives:

1. Ensure that basic amenities such as benches, tables, grills, and trash cans are available and in good working condition in all parks, as needed.
2. Replace playground equipment in neighborhood parks that does not meet current safety standards. This could include the installation of wireless telephones, security cameras and lighting to help combat vandalism.
  - Improvements to McIntosh Park. A priority of the city is to ensure that there are ample recreational opportunities within walking distance of low-income neighborhoods. McIntosh Park is located over an old landfill. It is the site of the first DNR grant received by the city in 1968. The playground equipment has not been significantly updated since that time and is in serious need of upgrading. Suggested improvements include Splash Pad
  - Playground
  - Benches
  - Recycle & litter bins
  - Dog waste station
  - Bike racks
  - Drinking fountains
  - Landscape/trees
  - Parking lots
  - Restroom/pavilion
  - Basketball/tennis/pickleball
  - Soccer
  - Lighting
  - Skatepark
  - Shade structures
  - Trail/sidewalks – what material (concrete, asphalt or aggregate)
  - Picnic tables at pavilion
  - Existing shelter removal
  - Grills
3. Improvements to Holland Park Including:
  - Install walking path.
  - Ensure adequate parking.
  - Install canoe/kayak launch.
  - Cleanup brush and fallen trees along and in Kalamazoo River that obstruct recreational river travel.
  - Increase ADA access to all elements including sidewalk to pavilion.
  - Install horseshoe pit.

4. The development of a community center is largely dependent on available resources.
  - Option A. Community Centered Recreation Facilities: Rather than having a singular site effort would focus on coordinating programming at existing sites to provide the variety of services that would be found at a community center.
  - Option B. Renovated Community Center: Vacant school buildings would be assessed for the feasibility of renovating to create a community center. Multiple nonprofit and for-profit tenants would occupy the space and offer an array of programs and services typically found at a community center.
  - Option C. Community Center Complex: A community center would be constructed to meet the needs of the community.

## Goal B: Develop Parks and Programming.

### Objectives:

1. Incorporate interactive public art whenever possible when enhancing parks, plazas, and open spaces.

## Goal C: Provide for preservation and recreational use of the Kalamazoo River and Albion River Trail.

### Objectives:

1. Develop a continuous linear park from east to west within the City along river, linking current parks, including the acquisition of the necessary properties.
2. Establish long-range plans with MDNR and governmental units in the region for recreation and parks development along the Kalamazoo River between Albion and nearby communities.
3. Maintain on-going river clean-up program with volunteers and City staff.
4. Review recreational opportunities when developing dam removal plans.
5. Evaluate canoe and kayak friendly that would allow for development of water trail along the Kalamazoo River.
6. Expand linkages to the Albion River Trail
7. Connect major activity areas in the community to the linear park.
8. Work with neighboring communities (Marengo, Marshall, Concord, Jackson County) to link Albion's linear park to a county-wide, regional, and state-wide system.
9. Support the addition of canoe launches throughout the city to assist in bypassing obstructions, such as low bridges. Suggested parks: Holland Park and McClure Park.
10. Work with others and review available information on Calhoun County Water Trail website and Kalamazoo River Council website to assist with to provide public access to the Kalamazoo River in outlying areas. Create parking, picnic areas and canoe docks in these outlying areas, establishing Albion as a destination or starting point
11. Establish fish and wildlife habitat improvements.
12. Removal of trees and lily pads along water paths.
13. Recommended Parks: Holland, McClure & Barnes
14. Provide a canoe/kayak launch and Holland, McClure and/or Barnes Park.
  - a. Utilizing the river to enhance recreational opportunities is a priority for Albion. One of the more popular pastimes is canoeing. The city boasts several canoe launches, however, due to the height of several of the bridges in town, additional launches are recommended, especially for the novice canoers. We recommend the installation of 1-2 additional canoe docks. The most cost-efficient option is the EZ Dock system. The EZ Dock system is designed as an environmentally friendly floating dock for use with boats, personal watercraft, and as a free-floating swimming and fishing platform. The system can be used by residential and commercial applications. Appropriate uses include both recreational and commercial. The EZ Dock system design is composed of two parts, the floating polyethylene sections, and the molded rubber couplers. Both the polyethylene and rubber were chosen as materials for dock components as



environmentally friendly products which are completely harmless to the environment and can be recycled when their designed use is finished. In addition to being environmentally friendly, the products offer superior performance characteristics.

GOAL D: Provide for comprehensive and shared recreational programming and facilities including cultural, educational, recreational, and social programs for all ages.

Objectives:

1. Develop strategic relationships with nonprofit partners to ensure that the programmatic needs of all citizens are met.
2. Work with Marshall Public Schools to review potential uses for closed excess school buildings and space in the community.
3. Review the opportunities for the development of a “community center” concept. Possibly share use with other groups.

GOAL E: Provide attractive entrances to the city with landscaping and welcome signs that provide consistent branding. (Basis: Partners for Progress, public comment, Project Rising Tide, Planning Team recommendation.)

Objectives:

1. Develop sign standards for all City Parks, properties, and buildings with the updated branding
2. Identify key entrances for signage into the community

GOAL F: Promote recreation programs and park facilities. (Basis: Focus groups, public comment, Planning Team recommendation, Parks and Recreation Survey.)

Objectives:

1. Publish “Leisure Guide” brochure, highlighting available public and private facilities, program offerings and the location of parks and trails. Integrate into the Leisure Guide a means of collecting continuous feedback and comment from public.
2. Encourage the local newspapers to publish a calendar of events as a regular feature.



## Action Plan

Year	Action Item	Cost Per Item	Cost per Year	Funding Source
2022	McIntosh Park Improvements	\$2,000,000.00	<b>\$2,365,000.00</b>	General Fund, MDNR Grants
	Install walking path to new facilities & horse shoe pit in Holland Park	\$65,000.00		
	Dam Removal Study	\$100,000.00		
	Victory Park Band Shell Improvements	\$100,000.00		
	Victory Park basketball & tennis courts improvements	\$100,000.00		
2023	McIntosh Park Improvements, Phase 2	\$1,500,000.00	<b>\$2,295,000.00</b>	General Fund, MDNR Grants
	Albion River Trail Expansion - Austin/Michigan Ave to McIntosh Park	\$200,000.00		
	Ketchum Field Improvements	\$245,000.00		
	Holland Park Parking Lot	\$75,000.00		
	City-wide Signage Improvements (parks & city entry points)	\$150,000.00		
	Clean-up of water pathways (lily pads & tree removal)	\$125,000.00		
2024	Albion River Trail Expansion - N. Albion Street	\$300,000.00	<b>\$650,000.00</b>	General Fund, MDNR Grants
	Canoe/Kayak Launch - Holland & McClure Park	\$200,000.00		
	Holland Park Walking Path	\$150,000.00		
2025	Community Recreation Center	\$4,600,000.00	<b>\$4,600,000.00</b>	General Fund, MDNR Grants
2026	Update Recreation Plan	\$15,000.00	<b>\$15,000.00</b>	General Fund, MDNR Grants

**Total 5-year  
Cost: \$9,925,000.00**

## Appendix A Funding Sources

Developing a funding plan will be a challenging, yet gratifying task. Locating and securing resources will be like assembling a puzzle, starting with key pieces and adding others to fill in the gaps. The key is matching the project to funder's interests. The following organizations may offer support to Albion. Since programs and deadlines may change, check websites for the most current information.

### Federal Funding

The [Catalog of Federal Domestic Assistance](#) has a database of all Federal programs, a one-stop for all Federal grant opportunities ([www.cfda.gov](http://www.cfda.gov)). If the College or another local non-profit can be used, or is formed, [grants.gov](http://grants.gov) can help find, apply for, and win Federal grants.

### Environmental

#### National Fish Passage Program (U.S. Fish and Wildlife Service)

[www.fws.gov/fisheries/FWSMA/FishPassage/fpprgs/GetInvolved.htm](http://www.fws.gov/fisheries/FWSMA/FishPassage/fpprgs/GetInvolved.htm) [www.fws.gov/midwest/maps/michigan.htm](http://www.fws.gov/midwest/maps/michigan.htm)

Midwest Field Office, Fort Snelling, Minnesota: 612-713-5360

The U.S. Fish and Wildlife Service's National Fish Passage Program is a non-regulatory program that provides funding and technical assistance for removing barriers to fish. The application deadline is in August.

#### U.S. Fish and Wildlife Service Partners

[www.fws.gov/partners](http://www.fws.gov/partners)

The U.S. Fish and Wildlife Service's "Partners for Fish and Wildlife" program offers technical and financial assistance to private (non-federal) landowners who voluntarily restore wetlands and other fish and wildlife habitats on their land.

#### National Fish and Wildlife Foundation

[www.nfwf.org/guidelines.cfm](http://www.nfwf.org/guidelines.cfm)

The General Matching Grants Program awards matching grants to projects that: address priority actions promoting fish and wildlife conservation and the habitats on which they depend; work proactively to involve other conservation and community interests; leverage available funding; and evaluate project outcomes. Funding ranges from \$10,000 to \$150,000 and the deadline is in September.

#### Fish and Wildlife Service

<http://federalasst.fws.gov/wr/fawr.html>

The Wildlife Restoration Act (Pittman-Robertson) provides funding for the selection, restoration, rehabilitation and improvement of wildlife habitat, wildlife management research, and the distribution of information produced by the projects.

#### Trout Unlimited/NOAA Partnership [www.nmfs.noaa.gov/habitat/restoration/projects\\_programs/crp/partners/troutunlimited.html](http://www.nmfs.noaa.gov/habitat/restoration/projects_programs/crp/partners/troutunlimited.html)

Awards support all aspect of a habitat restoration project: construction, engineering, planning, or outreach. Grants require 1:1 matches from a non-federal source or sources and vary from \$10,000 to \$100,000. While there is no formal application process, the project must be sponsored by a TU chapter or state council, or by TU staff.

#### NOAA/American Rivers [www.nmfs.noaa.gov/habitat/restoration/projects\\_programs/crp/partners/american\\_rivers.html](http://www.nmfs.noaa.gov/habitat/restoration/projects_programs/crp/partners/american_rivers.html)

NOAA partners with American Rivers to fund community-based fish restoration that can include fish passage projects. The funding range is \$5,000 to \$25,000.

#### Natural Resources Conservation Service

<http://www.nrcs.usda.gov/programs/whip/>

The Wildlife Habitat Program awards projects designed to establish and improve fish and wildlife habitat. The program supports river projects such as fill removal, channel clearing and enlarging, fish passage construction, and replanting.

## **U.S. Army Corps of Engineers (ACOE)**

<http://www.nae.usace.army.mil/pservices/206.htm>

Plan Formulation Branch (313)-226-6758

Funds from the Aquatic Ecosystem Restoration – Section 206 (Water Resources Development Act of 1996) program are awarded for river modification that improves water quality and fish and wildlife habitat.

ACOE may plan, design, and build projects that restore aquatic ecosystems for fish and wildlife and include recreation, including dam removal. Their expertise does not include whitewater recreation, and they would need to contract with specialists for this skill.

ACOE provides the first \$100,000 of feasibility study costs, then may share costs for study after the first \$100,000 of expenditures (50%), design and construction (35%), recreational features (50%) and operation and maintenance (100%). The sponsor receives a credit for the value of real estate necessary to build the project. The entire non-federal share of the project cost may be credited as work- in-kind, but the services must be provided after a formal Feasibility Study Cost Sharing Agreement or Project Cooperation Agreement is signed to receive credit.

Non-federal sponsors must be public agencies or national non-profit organizations that are capable of taking care of ongoing operation, maintenance, repair, replacement and rehabilitation.

[www.lre.usace.army.mil/\\_kd/go.cfm?destination=Page&Pge\\_ID=2272](http://www.lre.usace.army.mil/_kd/go.cfm?destination=Page&Pge_ID=2272)

## **National Park Service**

The Rivers, Trails, Conservation Assistance program supports grassroots efforts to preserve natural resources for public use. They broker partnerships and support projects financially with shared or matched funds. The link below illustrates an RTCA success in Bridgeport, IL and the Canal Origins Site.

[www.ncrs.fs.fed.us/pubs/misc/chicagoriver/pdf/illmich.pdf](http://www.ncrs.fs.fed.us/pubs/misc/chicagoriver/pdf/illmich.pdf)

**Economic Development Administration** [www.eda.gov/InvestmentsGrants/FFON.xml](http://www.eda.gov/InvestmentsGrants/FFON.xml) Regional Office (312) 353-7148

Two grant programs for public works and economic development have been available in the past to initiate and support community revitalization:

**Economic Development Assistance Programs** – Availability of Funds under the Public Works and Economic Development Act of 1965.

**Regional Innovation Systems Research Project** pursuant to the Consolidated Security, Disaster Assistance, and Continuing Appropriations Act, 2009

Contact the Regional Office regarding these programs. While proposals are not being accepted at this time, it would be worth asking when the next grant solicitation calendar will be available, and periodically checking for funding program updates, since the federal stimulus may impact programs and requirements in 2009.

## **Health and Wellness**

The Environmental Protection Administration supports projects that integrate environmental protection and partnerships that address local community and economic goals.

There is a specific issue that is a priority for our nation: the obesity epidemic, particularly among children. Concern about hampered lifestyles, longevity, insurance and health care costs have catalyzed a commitment by eleven federal agencies to support healthy lifestyles. The Center for Disease Control is the driving force for innovative programs and funding, and a few notes from their website are listed below.

## **Child Care and Out-of-School Time Programs**

- The National Child Care Information Center has gathered a list of funding sources and ideas for funding childcare.
- [Afterschool.gov](http://Afterschool.gov) is a one-stop resource for information on federal funding sources.

- The [Finance Project](#) publishes brief reports that outline good strategies for sustaining, stretching and finding dollars for out-of-school and childcare programs.
- Youth Action Net, a website for youth-run programs gives tips for fundraising and a list of current grants.
- Children's Health and Social Services
- Find out if you are eligible for federal funding and how to apply in the [Grants Net](#) section of the Department of Health and Human Services.
- The [Maternal and Child Health Bureau](#) administers many federal programs to improve child and family health.
- The [Center for Health and Health Care in Schools](#) posts current funding opportunities and links to funding sources.
- The [Community Toolbox for Children's Environmental Health](#) offers small grants to community-based organizations each year.

Great Lakes drainage projects often include rivers like the Kalamazoo. [www.nmfs.noaa.gov/habitat/recovery/index.htm](http://www.nmfs.noaa.gov/habitat/recovery/index.htm)

U.S. Fish and Wildlife Service will spend \$115 million for priority construction, repair, and habitat restoration, and another \$165 million for critical deferred maintenance, capital improvements, habitat restoration and other projects. [www.fws.gov/grants](http://www.fws.gov/grants)

### ***Private / Foundation Funding***

Albion Community Foundation

[www.foundationcenter.org](http://www.foundationcenter.org)

Many private foundations support environmental improvement and have been the source of significant funding for whitewater courses that are restoring habitat and re-watering river reaches. In addition, new funding programs have been developed to support the nationwide movement to re-introduce children and young adults to outdoor play and recreation. For more information about the Forum for Children in Nature, visit [www.conservationfund.org/node/865](http://www.conservationfund.org/node/865). There may be model projects that spark ideas about fundable programs in Albion.

### ***State Funding***

[www.michigan.gov/dnr-grants](http://www.michigan.gov/dnr-grants)

Funding opportunities from state stimulus awards should be explored with these organizations:

The Michigan Natural Resources Trust Fund supports acquisition and development of outdoor recreation or protection of Michigan's natural resources. This fund awarded \$200,000 to the City of Williamston for a whitewater course. [www.michigandnr.com/PUBLICATIONS/PDFS/fishing/dams/DamRemovalGuidelinesForOwners.pdf](http://www.michigandnr.com/PUBLICATIONS/PDFS/fishing/dams/DamRemovalGuidelinesForOwners.pdf)

The Michigan Natural Resources Trust also supported Michigan Heritage Water Trails along with the Michigan Department of Transportation in response to the state's vision to connect the state with trails for non-motorized users. These funds have been applied periodically to water trails. [www.michigan.gov/mdot](http://www.michigan.gov/mdot). Look for "Projects and Programs/Grant Programs." The Michigan Economic Development Corporation is the state's steward and advocate for travel and tourism resource grant opportunities <http://michigan.org>

### ***County/Regional Funding***

Regional revenue from hospitality assessments may be available. For more information on this program, contact the Greater Albion Chamber of Commerce.

### ***In-Kind Assistance***

Consultation regarding aquatic ecosystem restoration, dam deconstruction and infrastructure replacement may be available from US Fish and Wildlife Service, National Marine Fisheries Service, and the Natural Resources Conservation Service.

Win-win partnerships can be developed through creative networking. Many whitewater courses have been built with rock from road building or unrelated excavation. Landowners can donate glacial rocks and become "Ten Ton Donors."

## Appendix B Community Center Study Conclusions 2002

Two beliefs are apparent among those who participated in this study, youth, residents, and leaders. First, the people in Albion would like a community center that is very comprehensive and includes programming for people of all ages. Second, there is concern about whether there is enough commitment or support to really develop a center.

The loftiest goal of the community center seems to be to unify the community. It is seen as a place where people can develop or deepen personal relationships with each other across age, race, religious, economic class, and ethnic lines. Another significant mission for the center expressed by participants in this study is providing activities to keep youth off the streets and out of trouble. Improving the health of the community by providing physical fitness equipment, classes and a pool are other important parts of the vision of a community center in Albion. A community center is also seen as a means of increasing the attractiveness of the Albion area, providing a center for entertainment and activities.

Youth, residents, and leaders all described similar patterns and shared common hopes for a community center. We have an active population. The desired features of a community center are similar across these groups. Everyone envisions space for physical fitness activities, sports, games, meetings, arts and crafts or woodworking, and offices. Some see an indoor pool or perhaps two and an indoor track. Some see dining facilities.

Many people agree that a center should be centrally located for convenience. The definitions of central may not all be the same, but people expressed the desire that it be downtown on the former Union Steel land or at the former Dalrymple School site or on the river by Eaton Street. About one third of the responses were from people who approve the idea of more than one location, perhaps a place like the Ismon House for meetings, classes, computer lab, crafts, and quieter games and another location for a gym, exercise space, swimming pool, and more active games.

There are many concerns or challenges expressed by people in this study. Some feel it will be a challenge having people of different ages, economic classes, and races using the same facilities and maintaining popularity. Teens in the focus groups were somewhat troubled by possible over-regulation. People in every group expressed worry about management and supervision. The complexity and diversity of Albion are also seen as challenges in establishing a community center. People specifically mentioned racial segregation, and a few are in favor while most are against it. We also have the challenges of economic, educational, and religious diversity. All three groups also expressed fears about whether funding could be located for building the center and sustaining it.

Idea about paying for the community center include grants, taxes, user fees, annual membership dues, corporate sponsors, collaborations with other organizations who pay rent for use of space (such as the hospital using a pool for therapy), fund raisers and contributions. The participants in the focus groups, telephone surveys, and leader interviews demonstrated a wealth of experiences, life practices, hopes, sensitivities, and abilities. Albion is a city with a human capital that could be put to work meeting the challenges of building and sustaining a community center.

This study demonstrates that Albion needs a community center. Many of the hopes and dreams of area residents can help shape the vision of a comprehensive, sustainable community center. The challenges expressed in this report suggest areas where CCAT work needs to concentrate. These areas include

- sustaining commitment among CCAT members and
- expanding this group to include other potential stakeholders in the community center,
- forming a legal board or foundation for the community center,
- determining the comprehensive mission of the community center,
- developing programs that fulfill that mission,
- designing the facilities needed for these programs
- locating funding for building and sustaining a center that fits the needs of the area's residents.

Appendix C - Public Input



## Summary of Albion Parks and Recreation Survey Results

September 23, 2021

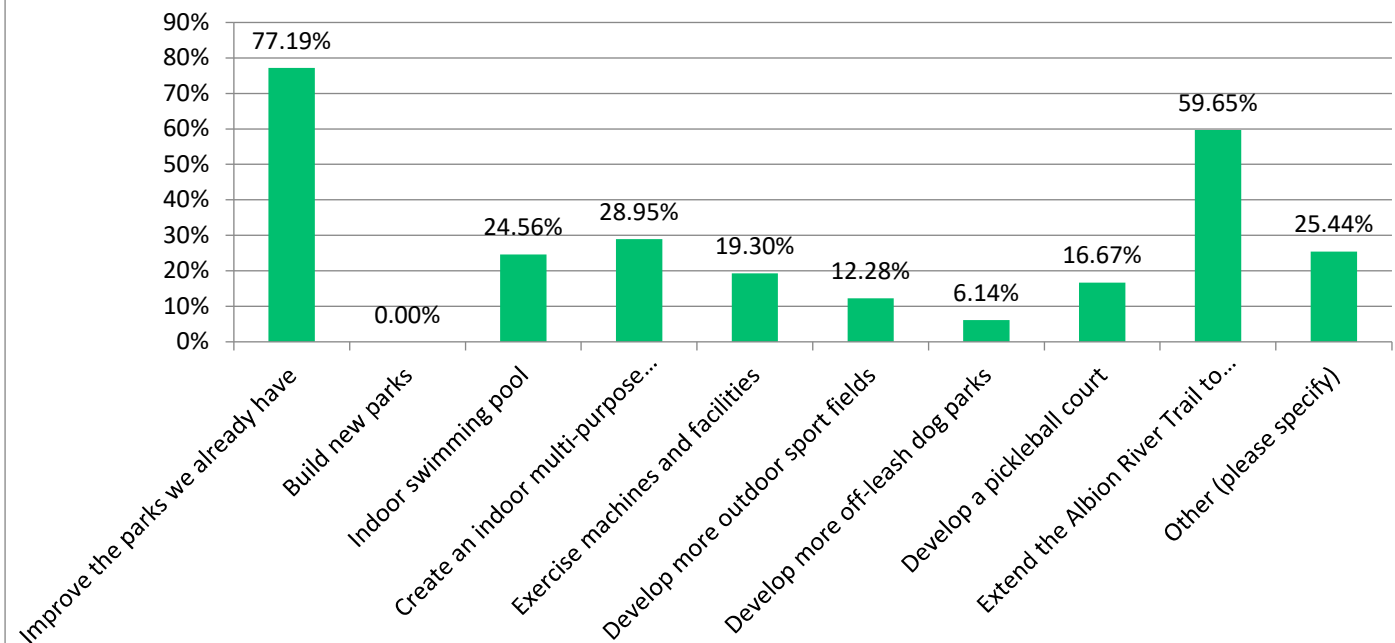
This survey was a combination of online and hard copy, with 114 total responses. It was publicized in the Albion Recorder, Albion E-News, and on the City of Albion website. The survey ran from mid-May to June 30, 2021.

### What park do you live closest to?

Victory Park	61
Holland Park	10
Reiger Park	9
Ketchum Field	7
Good Star Park	7
Barnes Park	4
Collaboration Corner	3
Harris Field	3
Crowell Park	2
McIntosh Park	2
Dog Park	2
Lloyd Park	2
Washington Park	1
Albion River Trail	1
Crowell Park	1
McClure Park	1
Molder Statue	1
Washington Park	1
TOTAL	118

The total is greater than the number of survey responses because several people listed two or more parks in the open-ended comments.

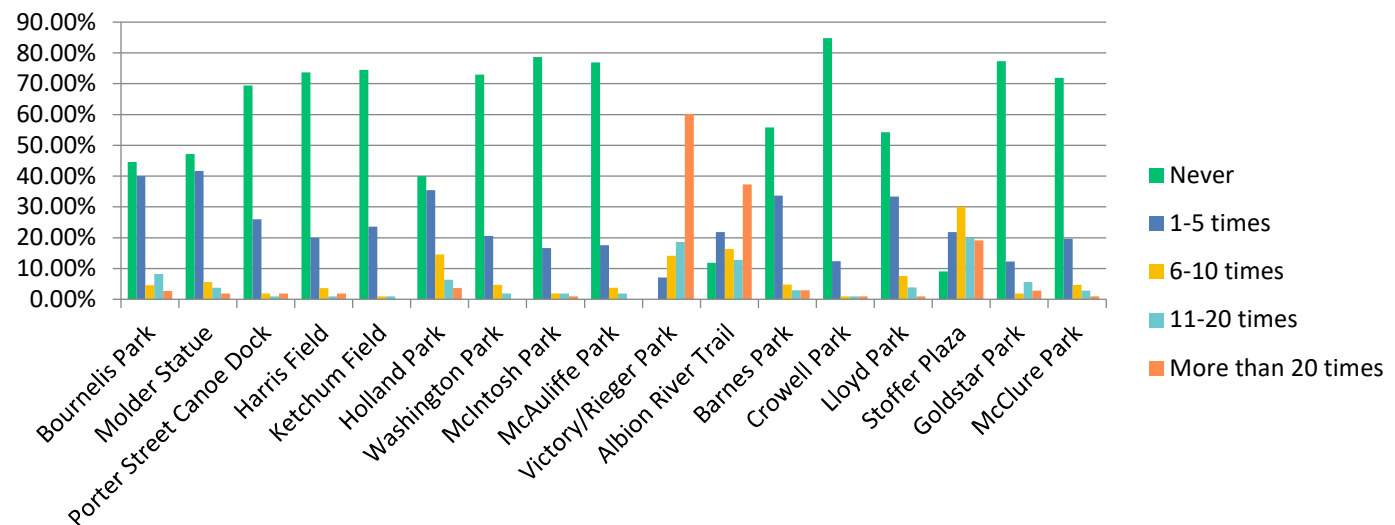
### What are the three most important park improvements needed in Albion?



Below is a summary of open-ended comments about what types of park improvements survey respondents are interested in:

COMMENT	#
General maintenance and upkeep	23
Construct/enhance bathrooms in Holland, McAuliffe, McIntosh, and Victory	21
Restrooms/equipment/splashpad in McIntosh Park	14
Update basketball/tennis courts in major parks	13
Convert Victory Park skating rink to a multi-use pavilion	9
Extend/maintain Albion River Trail to connect neighborhoods and parks	8
Park benches/picnic areas	7
Landscaping/lighting	6
Enforce noise/other ordinances	5
Canoe livery/launch/remove dams	5
Pickleball courts in Holland, McIntosh, and Victory	3
Enhance ballparks and equipment in Ketchum, Harris, and McAuliffe	3
Reduce parks and park sizes	2
Update Victory Park Bandshell	1

### How many times in 2020 did you or your family visit the following parks or recreation facilities in Albion?

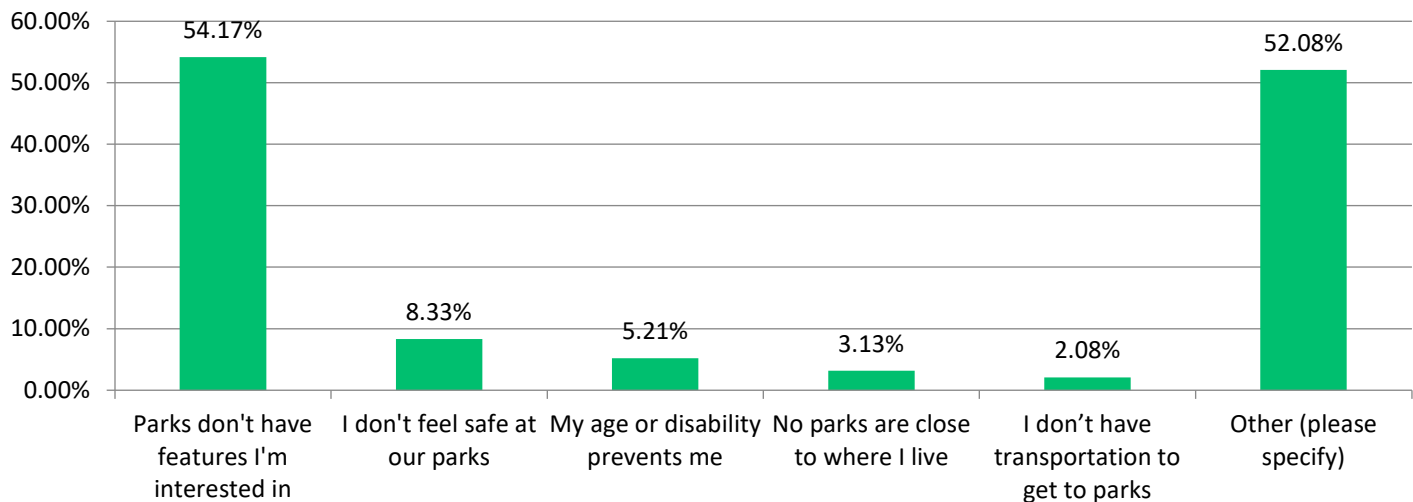


The longer the green and dark blue lines, the less visited a park is. The longer the orange, light blue, and yellow lines, the more frequently a park is visited. The table on the following page shows the numerical values for this question.

## COMMENTS:

	NEVER	1-5 TIMES	6-10 TIMES	11-20 TIMES	MORE THAN 20 TIMES	TOTAL
Bournelis Parks (NE Corner of Cass and Superior)	44.55% 49	40.00% 44	4.55% 5	8.18% 9	2.73% 3	110
Molder Statue and Park (SW Corner of Superior and Michigan Ave.)	47.22% 51	41.67% 45	5.56% 6	3.70% 4	1.85% 2	108
Porter Street Canoe Dock (Between Kalamazoo River at Stoffer Plaza and S. Monroe)	69.44% 75	25.93% 28	1.85% 2	0.93% 1	1.85% 2	108
Harris Field (Ballfield at 790 W. Cass)	73.64% 81	20.00% 22	3.64% 4	0.91% 1	1.82% 2	110
Ketchum Field (Ballfield at 1000 East North St.)	74.53% 79	23.58% 25	0.94% 1	0.94% 1	0.00% 0	106
Holland Park (NE Corner of Albion St. and Cass St.)	40.00% 44	35.45% 39	14.55% 16	6.36% 7	3.64% 4	110
Washington Park (Washington St. and Eaton St. on both sides of Kalamazoo River)	72.90% 78	20.56% 22	4.67% 5	1.87% 2	0.00% 0	107
McIntosh Park (Near Crowell School at State Street and Hoaglin Drive)	78.70% 85	16.67% 18	1.85% 2	1.85% 2	0.93% 1	108
McAuliffe Park (SW Corner of Albion St. and Austin Ave.)	76.85% 83	17.59% 19	3.70% 4	1.85% 2	0.00% 0	108
Victory/Rieger Park (On Kalamazoo River, bordered by Hannah St., Haven Rd., and E. Erie St.)	0.00% 0	7.08% 8	14.16% 16	18.58% 21	60.18% 68	113
Albion River Trail (paved recreational trail)	11.82% 13	21.82% 24	16.36% 18	12.73% 14	37.27% 41	110
Barnes Park (Along Kalamazoo River by Water St.)	55.77% 58	33.65% 35	4.81% 5	2.88% 3	2.88% 3	104
Crowell Park (Between N. Superior and Clinton St.)	84.76% 89	12.38% 13	0.95% 1	0.95% 1	0.95% 1	105
Lloyd Park (On Kalamazoo River on E. Cass St.)	54.29% 57	33.33% 35	7.62% 8	3.81% 4	0.95% 1	105
Stoffer Plaza (Marketplace on Kalamazoo River behind Superior St.)	9.09% 10	21.82% 24	30.00% 33	20.00% 22	19.09% 21	110
Goldstar Park (SW corner of Michigan Ave. and Clark St.)	77.36% 82	12.26% 13	1.89% 2	5.66% 6	2.83% 3	106
McClure Park (West of Albion St. along Kalamazoo River)	71.96% 77	19.63% 21	4.67% 5	2.80% 3	0.93% 1	107

## What are the most important reasons why you wouldn't use a park in Albion?



**COMMENTS:**

I am a senior citizen and do not have a need or want to go to the parks

The bathrooms

I didn't use a park because there are parks closer to home.

Noise, vulgar music and not feeling that it is my place to contact the police department

There is no reason that would keep me from using a park in Albion

Bathrooms aren't open or they aren't kept up very well when they are.

There are some parks that I might not feel safe going to alone. One must use common sense but for the most part, I feel safe in Albions Parks.

Not clean or kept!

I would feel very comfortable using the parks.

sometimes I don't feel safe in the parks. Large groups of teenagers/young adults scare me.

No time - just rather bike ride

When you live near Victory Park, other parks pale in comparison. I consider the whole contiguous Victory Park area from Hannah Street to Cass Street, although the Cass Street area is named Lloyd I believe.

Sometimes I am too busy or sometimes the park might be a little too dark in the evening in the fall/winter. But i do feel safe during the day in any park

Didn't know they were there.

I don't understand this question and may be answering it incorrectly. I think these are all reasons why I wouldn't visit a park. Only one is currently a reason why I don't visit a park.

visit many often - Not applicable

There are no reasons to not use Albion's great parks

An attraction or activity or a reason to go other than just as a place to sit would encourage me to go to other parks.

Parks are not set up for someone who has mobility issues. I have had problems with parking in the past. Uneven ground is dangerous for many people with disabilities.

"I like Albion parks

What no positives?"

Use ones closest to us

People not picking up after their pets

We tend to use the park that is close to our home.

We tend to use the park that is close to our home.

Filth would be the only thing to keep me out. Not an issue here but would be a leading reason above those listed

The activities are draw.

conditions of parks.

Too far away or lacking in features OR features are poorly maintained (ball fields for example)

Buildings and features are broken or in disrepair. Park is not mowed or clean.

Rest room facilities are out of date

Some of them I would not feel comfortable using but no real reason not to visit most parks.

Lack of adequate and safe sidewalks accessing the parks.

Dirty

We walk in parks closest to where we live.

no reasons :)

Dirty, filled with trash

Remember this was a Covid-19 year.

I have no problem going to any of the parks

Need bathrooms that are open and water.

Lack of events that interest me

Maintenance of park / cleanliness

I am not aware of all the parks.

Kiki

Not enough time, or its just too hot when I do have time.

Safety where drug use is high

I'm just new to town and haven't had the chance to use the parks much yet!

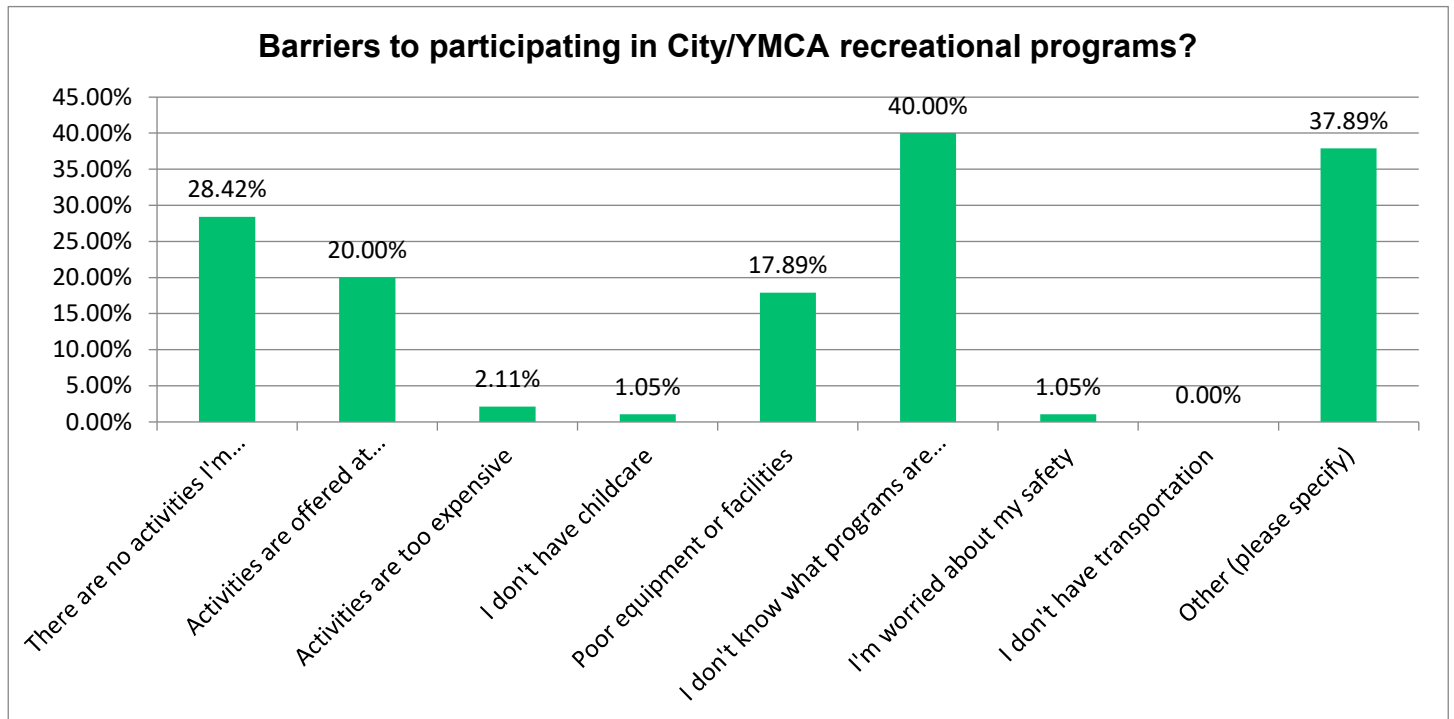
"I prefer to go where it's quiet and close because of

having combat PTSD"

Too many parks with nothing to do in them but sit or have a picnic - nothing to see, or to look at for two seconds and move on. Why call small little corners of intersections "parks"?

The maintenance of the parks is unkept.

I would use more parks other than Victory Park if they were connected by a recreational trail.



**COMMENTS:**

not enough youth sports

The only activities I read about (eNews) are for youth.

The need to wear masks kept me from using the YMCA programs. I would now like to participate in some of the exercise offered

"I work late hours and everything happens in the morning

There are no barriers for me personally that keep me from participating.

My children are grown. I would take my grandkids when they're available .

I just have never become involved with the recreation program partly because I had full time jobs or other commitments made that kind of free time difficult. I do enjoy and am active in the senior center now and very much appreciate the exercise classes and ping pong and social aspect of the senior center. It was grossly missed during the Pandemic. Many Seniors languished alone in their homes because they did not have the opportunity to participate in programs at the senior center. Sometimes, something so simple as reading a newspaper with other people around can be very important to a person who spends too much time alone.

They aren't clean or kept!

No barriers

I prefer to be alone or with my spouse and we do things together like walk the parks.

N/A

The facilities are nasty, dirty and falling apart, although the activities are very good and family members partake. Also, there is very little marketing done to promote the programs. I mean really! Get on that! Promote!

Sometimes I am too busy

Didn't know about programs.

Tennis courts are not repaired.

N/A

I have searched for YMCA class schedule. Can't find it. I attended one session of Step Aerobics. Can't get info to continue or to try another. YMCA of Battlecreek website also is not user friendly for programs in Albion.

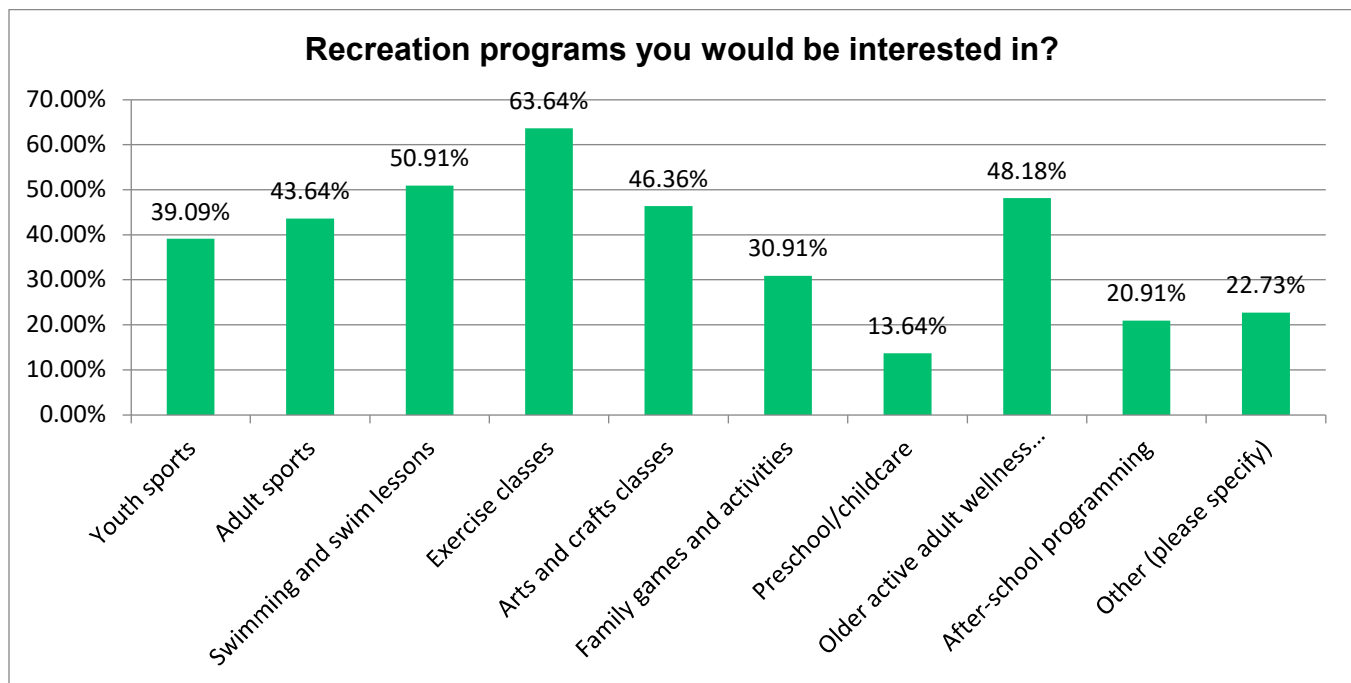
Not sure if programs fit the needs of people with disabilities.

" None

\* how come there are no positive choices in this survey? You will likely get results weighted to the negative."



Have gone to Forks Senior Center when it was open. Not going to work out with a mask on!! So will wait until that edict is lifted.  
 No barriers. Looking forward to the YMCA/Albion collaborations  
 I attend 4 classes a week. The swimming is the greatest. Just need to warm the pool a bit.  
 No barriers, I just choose not to participate in the programs.  
 Older crowd highly participates in YMCA activities and not people closer to my age.  
 My medical issues keep me from participating.  
 Albion Parks and Recreation has done a very poor job of advertising and when I happened to see something advertised it either filled up, didn't make, or was otherwise poorly communicated. I'll be honest, I am ashamed I didn't vote to not give more money to such a poorly run operation. These types of elections should only be on dates common for elections. It is deceitful to hold an election on days difficult for voters to get off work to vote. I can go to Jackson or Battle Creek for far greater options for my family.  
 Need to adjust my schedule and put recreational programs on my calendar. I don't have any mayor barriers.  
 The Y Center in Battle Creek have done a wonderful job with supplying the community with differs exercise programs  
 No barriers - happily participating!  
 I've enjoyed the YMCA programs. Please add Yoga and programs for kids  
 1) Better planning and communication - we must know about them in advance more so that we can consider them and sign up for them. 2) will have to have some consistency and longevity for people to gravitate toward these programs.  
 Since the YMCA is associated with Albion College I have no interested in supporting them, at least until their president is gone.  
 Nothing I'm 100% interested in joining, perhaps if we get some city sponsored youth activities (could be sponsored by small businesses, community group, etc)  
 The times are inconvenient, I just wish there were more times offered like early morning classes.  
 I have shown up for recreational programs too many times only to find that the program was canceled or have shown up at the pool only to find it was closed because there was no lifeguard scheduled. The Recreation Dept. has been nothing more than free play time in the gym at Opportunity High. I would like to know what they have done with all the money I am being for which I am being taxed.  
 I'm still wary of indoor group activities, I'm sure that wariness will fade as I get used to a post-vaccinated world



**COMMENTS:**

"Adult Group walking  
 Adult Pickleball  
 Adult kayaking and canoeing  
 I understand pickle ball is a great activity and I would like to see that available.  
 Walking groups offered at different times.  
 I would want to support many varieties besides just the ones I am using. These programs are terribly important to the mental health of the community and this community has a wealth of wonderful assets.

Adult lap swimming would be great. At a separate time from open swim so we can do laps without the children playing and being in the way.

"Tennis, badminton, pickle ball,  
Line dancing , golf instruction"

Some of those I've checked, it depends on what they are. How about movie nights at the bandshell or, better yet, projected on a downtown building with shops staying open late?

I like the River Trail Walks. Would be nice to have them a little more often

I know I use the Y from Battle Creek exercise programs and it is great

Guided nature walks. Weekly scheduled walk combined with flexibility training.

"Band Shell, music

Walks, runs /fitness

Kayaks

Adult swim

I'd love to see the skating rink open back up to have another year round, safe social environment for the youth.

The more options the better.

Streamlined organized sports-many different programs but honestly a little segregated.

To be honest, We are not interested in structured activities. We are pretty content as we are.

We go to Jackson Parks and Rec for great options in these areas.

intergenerational activities

Please bring back the Peapods/Summer Dreams program or something similar.

Although we wouldn't use them, the youth sports should be a focus in Albion, Michigan.

Hiking/walking group

Yoga

Adult lap swimming without the kids

Things like ballroom dancing and yoga, meditation , individual exercise programs

"Theatre

Cooking

Creative and expressive arts

Work/learn programs like the Play Right Academy, which flexibility for more ages and recreational outlets that equip people of all ages for work opportunities. "

## **What is your favorite park, sports field, or trail in Albion, and why do you like it?**

Reiger /Victory park. We enjoy walking along the river, looking at the waterfall and walking to play on the playground equipment. We also enjoyed the concerts in the park on Sunday's. It is also close to the Albion River Trail.

"Victory Park - many things to do there

Bike Trail - Somewhere safe to ride I/our bike"

Whitehouse Nature Center (if this is considered one of the city's parks) because is has many walking trails and you can cross country ski in there. Victory Park and the section of the bike trail on the east side of the city are also great. Victory Park is large, well kept, and features many species of trees. It also has areas of playing courts, etc. I like this section of the bike trail because it feels safer than the west side that is more isolated and you can cross country ski there if they haven't plowed it off.

Walk Trail

Victory Park

Victory Park because of the diversity of what can be done there and the connection to trails there in the park.

Victory Park is the most visited by us. Albion Trail is the most used. It is peaceful and comfortable

Victory Park. It is close to where I live; I can walk there. There are lots of trees. I like the covered pavilion and large "skating rink" area.. I also enjoy the concerts in the bandshell I also like History Hill at Holland Park

Holland Park. It's close to where I live.

Victory Park. We like the size, the available amenities, and the location to the trail from the Park to the Cemetery.

"Hard to pick a favorite. I like the new bike trail for walking near the cemetery. I love Victory Park and the Band Shell is a real treasure to this community. I frequently walk the bike trails through Albion. They are good walking and very scenic. The waterfalls, the traces, the wonderful bridge that brings it together. The lovely new corner on Cass street is just beautiful. I sat and had lunch in it with a friend one day. We just have an extraordinary wealth of beautiful parks."

Victory Park. It provides an opportunity to engage in multiple activities individually or as a family

"Victory Park has play equipment for the children.

It's well maintained and I feel safe there while walking and watching children play. "

Albion River Trail. Like riding my bicycle on it.

Victory Park - Because it is large and has many trees along with the river running beside it.

2 Trails - Use both 5x/week

River trail - great bike trail

Albion River Trail

The River Trail is my favorite trail because it connects different regions of town, and because I love to ride bikes.

Victory Park, has tennis courts none

Victory Park. It is the most beautiful park in the world, really, and I have lived many other places. All the old trees, and the bandshell, and the activity.

Albion River Trail, it connects many parks and brings people to Albion

Whitehouse nature center is my favorite. The quiet and restful natural setting. My kids like Victory park for all of the play equipment and fun programs.

Victory, larger open areas

Whitehouse Nature Center - It's the largest, spacious, and most welcoming place for nature. Second is Victory Park.

Victory Park- It's big and beautiful. Nice facilities for picnics and music.

"We go to the dog park every day. It's really nice to have a place where our dogs can run and play. Otherwise, we go to Victory, Rieger, Holland and Lloyd the most. But we also like Williams park."

Harris field, grew up playing baseball and made a lot of friends there.

river trail - beautiful. Nice to walk/bike off the road

Victory Park

Albion River trail - it is unique, natural and connects to larger trails. Available year round

Victory Park it's nice

Victory Park - a lot of things are scheduled there, including Swingin' at the Shell, the now-defunct Community Band, Easter hunt, CBA picnic, and my wedding reception (in 2015 when it was finally legal for my wife and I to marry).

Favorite park is victory park. Favorite trail is also the trail through victory park that ends at the cemetery. But I also grew up near Holland Park and enjoy that park also.

Victory Park, large, beautiful and has so much to do for people of all ages...Holland Park is a close second...keeps getting better all the time.

Victory Park - It brings back lots of memories from my childhood. Love the bandshell, the sledding hill, the water spring, the picnic shelters and just open for kids to run around.

Favorite is the section of trail south off at Haven Rd and winding through the forest to the cemetery. Pastoral view I beautiful and uplifting. Forest section is comforting and quiet. Winding layout of trail is artful. Cemetery is steeped in history and connection to those who have come before us.

I don't really have a favorite.

Victory

Probably Victory Park and White House conservation area.

I like the trail that runs through victory park to the grave yard. Very scenic and walkable. I like the pavement

Victory Park and the trail that goes through the park and up to the back end of the cemetery.

Victory Park and the trail that goes through the park and up to the back end of the cemetery.

Victory Park and the south trail that ends at Riverside Cemetery.

Victory park. Love the scenery and water features

"Victory

How many towns have such a treasure. "

Victory Park.. So many great areas.

Victory park trails (and trail connecting Victory Park to cemetery), but ultimately Victory Park as a great variety of nature space (waterways), and entertainment venue (band shell).

Victory park - sledding hill, bandshell, various shelters, river crossings, so spacious

Victory Park. It has the wonderful playground. Historic band shell and pavilion space too. It's got lots of shade and also is along the water.

Albion River Trail, I like to walk

Albion river trail that connects with North Country trail

Victory Park is my favorite because of the space and the variety of activities along with views.

Victory Park and the trail through town.

My favorite park would be Victory Park because I have gone there since I was a kid. My grandfather helped build it and even added a lot of my family's names to the boarder of the playground. Victory park provides a walking trail, basketball and tennis court, and of course the wonderful playground and sledding hill.

Victory Park is the most beautiful outdoor park space and offers myself and my family so many different outdoor activities. The beautiful play structure for the kids, the bandshell for concerts, and the sports fields for baseball, tennis, sledding hill, and Disc Golf. It offers beautiful views of the river and provides so many opportunities to connect with your neighbors and friends. Victory Park is also a park that connects multiple parts of our town together.

Victory Park - because of the river and wooded area.

Victory Park. Lots of space and several things to offer.

Victory park is great because its so big. However, it has gone down. There were broken slides, wood, and it was filthy with trash. Im not sure if this has been fixed since i havent been there since.

Victory Park

"Victory/Reiger Park - I like the water, stonework, and trees--it's a pleasant place to walk. I also like the ice skating rink when available."

"Victory Park

Trail from Victory Park thru cemetery and down thru town.

They are beautiful.

Victory Park because it has it all; the playground, river, band shell, sledding hill and walking trail.

Victory Park and adjacent bike trail.

We love the trail through Victory Park to the Cemetery where you can see the Equestrian Center. We spend the most time in Victory Park.

"Victory Park-the size, beauty of nature, and all the amenities this park has to offer such as the band shelter, the picnic shelter, the play structure, the other shelter, the sledding hill tennis and basketball court, frisbee golf, beginning of the trail. We started using this park since the 1960's. On hot summer days it was always a place to go to cool off. There were slides, swings, etc. I always took our grandsons there to play on the play structure. A good place to have our book club meet on summer days."

Victory Park, Holland Park (amazing!)

Holland Park because it is more appealing and current compared to the other parks. Victory Park is also appealing.

Victory park

Victory Park

Victory Park, love concerts at the shell and the trail.

Victory park - to walk in it along with the Albion Trail

Victory Park

The trail that runs through Albion. With some more investment, it could be a destination recreation experience.

Victory Park. It's a great place to walk.

Victory Park, for the size and water features.

Victory Park

Victory Park - the variety of things to do including the walking trail (going in several directions), the disc golf course and the river.

Victory Park- more resources

Victory Park and the Trail that goes from Victory park to the cemetery

Victory park and the trail through Albion.

Victory/Rieger -- lots of space for different kinds of activities for all ages

The trail from the cemetery to the ballfield

Victory Park and trail from the park to the cemetery.

Victory park trail - it is a beautiful place to walk

"Victory Park

Walking"

Victory park. It's right by my house and has decent structures for my kids to play on.

Reger

Victory park. Love the bandshell and walking the paths

Victory park beautiful setting

Victory Park. It is centrally located, lots to do, playground, basketball & tennis, fish, picnics/pavilion, disc golf, walking, sled hill.

Victory Park because it has so many trees.

"Favorite Park is Victory Park. It is really a great place to visit. It has all the amenities that one could want from the band shell to the playground, to the pavilion, tennis courts, ball fields and disc golf.

Favorite Trail is by far the river trail. It is a great asset to the community. Would like to see some development of the trail from Eaton street west to the ball field. "

Victory/Rieger Parks, bc of the river and scenery and trail that goes thru it

Victory Park. Swingin at the Shell. Disc golf, rivers, cleanliness, and the feeling of safety.

Victory Park - Beautiful when maintained properly, so many events can happen there.

Victory it's quiet and beautiful

I really like Victory park. It is big and beautiful and has all of the things a park should. I tend to spend a lot of time in Rieger park eating my lunch by the river.

Barnes Park-River access heading up river.

Victory Park. It's the nicest and that is where we played tee-ball as kids

The bike trail and the nature center. They both provide beautiful scenery.

Victory Park is my Favorite Park

The Whitehouse Nature Center because its quiet and away from people. Second is Rieger Park because it's in walking distance and I like to read on the benches by the water.

Victory Park - there are many things that a family can do while visiting that park. Children can play on the equipment, families can be entertained with events at the bandshell, one can sit and take in the tranquility of the river, and during the winter families can enjoy the sledding hill. Recreation department used to utilize the baseball ball fields for t-ball and soccer and football would utilize the larger spaces for practice and competition.

"Victory - for ""Singing at the Shell"" and the bike trail that goes through the woods and countryside to the Riverside Cemetery."

The Albion River Trail is my favorite because it connects the entire city, it's beautiful, and it allows me to exercise and not stay in the same space.

The Albion River Trail. It's a great and scenic place to walk.

The bicycle trail through Victory Park and across Haven all the way to the SouthWest corner of Riverside Cemetery.

"Victory Park with the trails and frisbee golf

"Victory/Rieger Park, Albion River Trail, Holland Park, Whitehouse Nature Center

Victory/Rieger Park: wonderful to spend time in, variety of amenities, nice walking areas, river, bandshell, covered seating/meeting areas

River Trail: love walking and biking trails, variety of scenery is nice, protected and a good route

Holland Park: History Hill, covered seating/meeting area

Whitehouse Nature Center: immersion in nature, lots of trails, flowers, trees"

## **If you could make one change to any park in Albion, what would it be?**

Up keep/maintenance of all the parks/equipment we have. Update the basketball/tennis courts at Victory provide equipment for kids at Macintosh

A walking path beside Haven Rd. as it skirts the south side of Victory Park. So very much needed!!!

Benches

Redo the bathrooms

More maintenance for all parks.

"Noise ordinance to be enforced. When people are enjoying a great day and people are playing music that can be offensive to others. If it is loud and vulgar, we should be able to enforce the noise ordinance.

That is the number deterrent to going to the park."

Extend the River Trail to connect to the trail in Marshall

Upkeep. We have plenty of parks. Let's take care of what we have. Also, make McIntosh a real park. Now it's just an open field with not much there. Lots of kids live close to it.

Just maintenance. The play ground was a great idea, however it's poorly maintained.

"That is tough but I think the Band Shell has to be preserved because of the wonderful concerts and wonderful atmosphere that that park presents. There are many many communities that would love to have that structure and thanks to our forefathers who had the vision to think ahead, Albion is now the lucky recipient of that time in history. "

Keep them clean, neat. Consistent upkeep. They are eyesores right now.

Update and maintain play equipment at Holland Park and Victory Park.

extend river trail at both ends

All the parks need some TLC. Being that Victory Park is the most used, it could use a lot of fixing. Take a walk and see for yourself.

Increase maintenance on existing infrastructures.

extended the bike trail

Keep them well maintained by mowing, trimming, sweeping, cleaning

Cleaner toilet facilities!!!!

Resurface tennis courts!

Updates and augmentation: rest rooms, renovations like to the skating rink to make it truly multipurpose and so you can skate, the picnic pavilion is nasty, more activities for kids are needed.

Would be nice to see some do-able choices. The parks are a lot to keep up with now.

Maybe update equipment? Outdoor summer camp.

Better sports courts and more activities

Improve the sports facilities at Victory Park. I know we only pick one, but any of them is fine (tennis courts, basketball courts, baseball fields, etc.)

Tennis courts at Victory Park

I would plant trees in the dog park. I would also put more benches in the park.

More activities at all of them

decent restrooms in victory park

World class upgrades

Better bathrooms at Victory Park



Add some type of water park or fountain that kids can cool down in.

Take out the street by Barnes Park and make it bigger...

Picnic areas for families. More police patrol to keep out drug users and sellers. Cleaner bathroom facilities.

Refresh Victory Park - Tennis courts get use but the fence is rusty and surface is poor. "Old ice rink is used for large gathering but has no ambiance. Needs landscaping, painting, lighting, better parking, and painting to make it feel like it is not simply a derelict, unused ice arena but now re-purposed as large covered picnic pavilion.

Parks need to be more handicap friendly.

"Fill in the swamp at victory (by the hockey rink) and create some more sports fields.

Work with Calhoun county to build a paddle parking and river exit ramps at the old Starr campground and after the rapids in Marengo.

Make Albion a paddle destination

Open restrooms!

More lightening/ later hours at victory park

I would repair the tennis courts and basketball courts at Victory Park.

I would repair the tennis courts and basketball courts at Victory Park.

"Find finding to fox retaining walls in victory park or seek an alternative. Some areas are not structurally sound and it is eroding beyond the walls.

Parks in general seem fairly well maintained"

Work on landscaping more.

Upkeep of the facilities especially the bathrooms at Victory Park.. I actually think Albion has too many parks. They should cut down on the size of parks such as McClure, save the money and do a better job of keeping other parks in tip top shape.. We have parks for a city of 15K and now we are half the size.

Additional bike/walking trails that ran all across the city and connected to other trails in the area such as the Falling Waters Trail, etc.

Improve the upkeep - I know this is because City is understaffed.

Upgrade the bathroom in Victory Park

Resurface basketball and tennis courts at Victory Park.

I would improve the bathroom at Victory Park.

Renovate Ketchum field and make it a first rate park to play sports at.

Better/new bathroom facilities in Victory Park

Just better upkeep in general.

I would make a change to Victory Park and that would be to keep up with the tennis and basketball courts. By making the pavement better and adding the net to the tennis courts people will be more willing to go and play.

I would make sure that McIntosh Park had a pavilion with electricity and a beautiful play structure for the children in that neighborhood. In addition to a play place, bathrooms and outdoor walking (measured for laps/miles) would be a great addition to that neighborhood.

Maintain a certain level of cleanliness.

Better maintenance of parks and functioning bathrooms at each.

Cleaner victory park and NEW BATHROOMS that are usable with someone keeping them clean.

More benches and bike lanes

possibly more children's playground equipment

"Up grade tennis courts and add Pickle ball. To Victory Park.

McIntosh Park splash pad and playground

Convert the shed next to the pond in Victory/Rieger Park into a canoe livery for renting canoes and kayaks to the public for use on the Kalamazoo River.

Updating tennis courts at Victory Park

"No trash

Pest control"

It would be McIntosh. I am sure there are funds (grants) that will develop a park for children and adult use. This park is surrounded by children with no safe equipment for physical, social and emotional development (playing together will increase social skills and mental health).

Mow better and better plantings and maintenance

Adding a water pad at any one of the parks would be great.

Improve the bathroom facilities at Victory Park

Maybe a water park for the kids!

More investment in McIntosh Park

More playground stuff in McIntosh Park.

Not sure. Pickle Ball!

Victory Park - redo the Garden area near Haven Road...possible wedding venue

Ketchum and McAuliffe - a little cleaning/sprucing up to look a bit more appealing/useful

Restroom area/ splash pad

General upkeep. Also bathrooms that are actually open and usable.

Maintenance (paint / reroof) to the pavilion over the ice skating rink  
 More seating and picnic bench areas  
 More rec programs and equipment in the north west section of the city.  
 Better use for sports  
 Victory, clean it up, redo bathrooms and fix pavilions.  
 Better restroom facilities  
 Better bathrooms in all the parks  
 Update some things, like the tennis nets at victory park. Put in an actual kayak/canoe launch.  
 Enforce the noise ordinance. I walk in the park and the cars parked with the really loud music is annoying.  
 some development to the river trail west of eaton street to the ball field.  
 Paint/update large Victory pavillion  
 Plant flowers the way Susan Rieske did back many years ago. Perennials..  
 Cleanliness  
 Remove dams and make better access for canoeing and fish passage.  
 fix the ice rink so it freezes in the winter  
 Better restrooms.  
 Fix the pavilion  
 I think they should be more dog friendly.  
 Would like to see some type of playground at McIntosh park for kids.  
 Upgrade Holland Park for basketball and add a pickleball court  
 "Having toilets available;  
 Running water for sanitation;  
 Creative trash receptacles so that people have fun while keeping the parks clean."  
 Better restrooms that are unlocked during the day in Victory Park and Holland Park. Also, more mowing along the edges of the Albion River Trail.  
 Be honest. Stop labeling little triangular bits of grass "parks." It is so obvious that the City is just trying to make it look on paper that we have a lot of actual parks. I am talking about the apartment side of the KZ river behind Stoffer Plaza closest to the bridge by the old brake shop. The so-called "canoe dock" is nothing more than a short walkway down to the river. There is no parking, no facilities, a terrible spot launch a canoe.  
 Having rules enforced.  
 Clean/maintain bathrooms in Victory/Rieger Park

## **Is there anything else you would like to add regarding Albion's parks and recreation facilities and programs?**

Is it possible to use the Albion Opportunity High School pool for activities/swimming lessons what is preventing the public from using it?  
 It would be wonderful to have a facility where community could go to exercise at an affordable rate. To be able to provide swim lessons for kids and have space to provide youth programming. Our community needs and deserves a space for wellness - that is not reliant on the college!  
 Advertise: fix the website, get booklets created about using the river for boating and floating, include all ages. Don't assume older adults only want to use exercise equipment indoors--we want to use outdoor courts, trails, lakes, rivers, etc., but need information!!!  
 Disk golf course could have T signs added and benches. Cement is slippery when it gets wet. Make sure there are working restrooms, and have lights.  
 Pre-teen to early teen cooking classes would be great.  
 Regarding the question about how many times I have visited a park, many of these are small areas in town which I "visit" as I walk by, such as Bournelis, or Stoffer Plaza when I go to Farmer's Market. I appreciate these very much. Perhaps there are opportunities for cooperative efforts with such venues as Farmer's Market, and Walk the beat concerts.  
 I've been a member of NAACP nearly all of my adult life and will ALWAYS support the fight against injustice. Nothing will change that. But I am VERY CONCERNED that the Albion Branch is getting dragged into supporting a "vision" that will end up dividing people instead of uniting them in support of something that most people in Albion would get behind if it's left up to us. I know this is a survey about parks and recreation, but the college's approach to just about everything in Albion lately has been divisive, and recreation won't be any different. Putting a Y center on Michigan Avenue makes about as much sense as building a new elementary school there. It's just one more thing that benefits people who live close to Albion College at the expense of those of us who don't.  
 "I think I have expressed my own preferences but this is a dynamic community and I understand that the community needs to address different needs of its residents and we need to be aware of and respect the needs of others."  
 They need to be usable, accessible before you use the excuse that they aren't safe! They are not in a condition to be used, they are not clean, they are not kept...no need to worry about safety other than snakes in the grass on the courts!  
 Recreation activities are very important for all during winter months.  
 Consider adding playground equipment to the empty space where "noh' school used to be

Other Rec Departments in other towns do trips. I go to Marshall and go on senior trips to places like South Haven, Lansing, etc. Day trips with low costs (\$60 per person). They use a charter bus and don't allow children.

Trail maintenance needs improvement. Pruning, repair of bumps & holes, etc.

Indoor courts for tennis badminton & pickle ball

"Yes. As a decades-long resident of the City of Albion, for the first time ever I am enormously concerned about the power grabbing, bulldozing bully known as Matthew Johnson, the Albion College president. (To be clear, I am NOT affiliated with Albion College or the City of Albion; I serve on no boards or committees in Albion or anywhere in Calhoun County or elsewhere; I am not and never have been an elected official anywhere; my kids are not in any Albion schools and I am not affiliated with the schools; I am not employed in Albion; and I whole heartedly support quality, mutually beneficial, polite, and constructive "town-gown" relations.)

In his actions and his statements, in public and in private meetings—including with City Council and school board officials—Johnson has been a power-grabbing, intimidating, bullying obstructionist; a bad actor who manipulates innocent people for his own interests; selfish to the extreme; poorly mannered; an antagonist to well-meaning Albion citizens; a despicable player who is quick to "grab his ball and run home" (literally fleeing meetings where he doesn't get his way); an insensitive loud who publicly and shamelessly mocks teachers and respected members of the community; an untrustworthy liar who will stoop to nothing to get his way; an unscrupulous, unethical, deceitful, bad tempered, intimidating, hypocrite who lies, harasses, yells, throws objects, hurts people, connives, bribes, and tries to take over seemingly every entity in this town.

He has intimidated people into retirement to avoid having to deal with him—and I am not referring simply to Albion College people. He runs the college like a fiefdom and has lost the respect of nearly all who work and attend school there. He is a mean fellow hell-bent on getting his way—my way or the highway—at any cost. He has aligned himself with disgraced, legally challenged, bitter, delusional, and misguided former politicians and others in Albion while being dismissive and disdainful of people who work in and for Albion and who have been duly elected by Albion citizens to run the City. In short, he is really angering a lot of area residents, and it's getting worse every day.

Yep, he is "Not Midwest nice," as he says. That's about the only thing he's gotten right since he arrived. But not being "Midwest nice" is no excuse for his behavior, attitude or actions. Plenty of other outsiders have come here full of initiative and ideas and attempted to help the city by working WITH people, not against them, and listening rather than bulldozing. He is causing great harm, and the city (and the college, for that matter) will forever be changed for the worst. The college taking over ANYTHING in Albion—other than the college—would be a sad state of affairs. The college can't even get the COLLEGE right and it's failing. Get your own house in order.

Specifically: I am greatly concerned about plans or conversations about assuming control, taking over, or otherwise subjugating the leadership and existence of these things:

- The Recreation programs—they are well run and can be improved if need be.
- The Parks—he has proven to be untrustworthy, and I wouldn't trust him to upgrade or improve the parks without him feeling he should get something in return—like buying someone's vote. It's called bribery.
- The nonprofit Bohm—does he really think he can take over this gem that was restored by the citizens and run as a nonprofit?
- The Albion elementary school, Harrington, and the schools in general—after the difficult schools annexation, we do NOT need to throw the Albion public educational system into further chaos and division by starting a charter school or some other school that would destroy the tax base and line the Albion College coffers. A school run by Albion College? Albion College can't even
- The Albion Dog Park. He better not take over this area and doom the best dog park in a several-county area.
- Other Albion programs, boards, organizations, and initiatives that he is trying to control through intimidation. "

We are lucky to have so many parks but maybe some of them are more of green space and not quite parks. What is the definition of a park? Do all of our parks meet that definition? This is a big asset for Albion. And a big responsibility. I use the parks and value them. We have more parks than just about anywhere. We don't need more, but we do need to continue to invest (develop/maintain) what we have.

The river has historically been the economic driver of the town. Let it live again. Get the canoe/kayak/rafting opportunities.

We enjoy the parks in Albion, particularly the dog park and hope that they can be improved.

Free or affordable access

Yes to have all the Basket Ball hoops up at Victory Park last Time I was there they was taken off

Something similar to Nixon Park in Jackson would be awesome to see in Albion

Albion has beautiful parks which are a source of community pride. The city should host volunteers with a community picnic to do well-planned cleanup of parks and do all parks at least every 2 years. This will enhance collaborative community pride.

Most of those parks listed I do not really consider a Park. They are just corners in the city that are kept up by the city. A park in my mind has facilities for recreation and a place for families to retreat to not just a place to look at or maybe sit on a bench. I do appreciate that the city does keep the corners looking nice though.

We are blessed to have so many parks. Holland park is especially important for its history display. Lloyd park is lovely as a riverside park, except surrounding neighborhood drags it down. Please please we need a canoe/kayak/ livery or a bicycle/frisbie golf rental shop.

Someone needs to take a hard look at how people with limitations can be included. Uneven ground, poorly maintained paths can cause serious issues for many adults.

We don't live in the city. We live 2 miles east of victory park. The parks bring people to Albion. The parks should be seen as Albion's greatest asset - even more than the college.

More picnic tables.

We are fortunate to have as many parks as we have so it just seems logical to upgrade those and take better care of what we have. Each existing park could be improved and I think that would increase usage.

"I would like to see programs and activities geared for youth.

More things to get them engaged in the community and each other.

More events to get the town together. Iono.

You may see a theme here,... Maybe it's the rona but I'm ready to get my butt out and do things 😊"

I'm enjoying the programs with the Y and hope to see more options for the children. We need to keep them busy and involved for a better community.

Take better care of what we have.. Don't add anything more when you can not keep up with you have.

Why are there 17 parks for a city of 6000-7000 (maybe less?) people. Close at least seven of them and reassess.

The roof of the hockey pavilion in Victory Park is leaking and should be repaired. Sidewalks leading to the Victory Park bathrooms should be added. The parks are so lovely, they just need to be better cared for. Perhaps groups of citizens could help with some of the maintenance. The city has told citizens not to mow or help care for park areas, maybe time to change that stance. The parks are one of the many features that make Albion a great place to live.

Victory Park playground should be better maintained. I believe there is a fund for repairs.

Great and long lasting signage for all to read would be great at all of the parks-many are good now, just keep improving all of them. They do a great job of keeping the parks clean of debris and garbage.

A separate facility for the YMCA programming would be nice. Programs being held at the college don't seem fair to either the students or the community. There is enough space in this town to have a separate space for community members.

Albion needs a good place for people to exercise and swim that isn't associated with Albion College. The college has become a schoolyard bully.

We need to provide better care for our parks and create more programs for kids in the community so they have a place to go to have fun and to just get out the house .

"I am truly concerned with YMCA's approach to recreation in Albion. There seems to be programming for older adults centered at Washington Gardener, but where are the youth programs? T-ball? Swim lessons? Soccer/basektball leagues? Midnight basketball? Baseball? Adult sports and other activities like kickball, dodgeball, etc. It seems the YMCA is being controlled by the college. Holland Park and Washington Gardener are not the only places in Albion where activities can take place.

Albion truly needs a facility such as the YMCA. I think that the college is trying to control its location from what is available on facebook. I am opposed to the college owning/running or being the location for a YMCA. Every time the college says something is for community, that thing then disappears from the community within a year or two. For example: The Iudington Center, The Dow, The Library, The Kellogg Center, etc. I would hate to see the YMCA end up on that long list of promises to the community unfulfilled.

I would like to see focus shift from Holland Park to Macintosh and Victory Parks. Macintosh has nothing for kids and families at all and needs to be completely revitalized. Victory Park has several unkept facilities- baseball/t-ball fields, Ice Rink, etc.

There also needs to be better communication about rec programs and activities. I know that I am a pretty connected citizen but it still feels like programs are word of mouth and not a common calendar or an app or anything that I can access to find out when things are taking place. It is concerning to me that I get an organized list of programs from Marshall and Marshall Public Schools about all of their programs for the summer, but we did not get anything for our own town.

I also think that it is sad that our community has contracted with the YMCA for almost \$100,000 for the year and it seems like very little programming for children is happening. I just expected better. If the college owns the YMCA, our family will not be members. If the YMCA continues to allow the college to dictate their programming and locations, I will contact my council person and advocate for not renewing the rec contract with the YMCA.

Further- When is there going to be someone running these programs in Albion?"

"Functional volleyball court.

Regulated Sand pit with fossils to discover.

Prompt repair of accessories or amenities like the tire swing, slides, equipment, benches, parks signs, etc.

So much beauty in our parks that just need TLC! Thanx for doing this. "

NA

Keep the parks safe (more lighting and clean)

I think are parks are great.

I know it is difficult with the number of city employees available for park maintenance, but our parks are currently not maintained adequately. Equipment is broken, trash is evident and weeding is non-existent. Restrooms at Victory Park are

in very poor shape. Overall, we have wonderful parks, but very poor maintenance of what we have to showcase for our city.

Our community is so blessed to have the parks it has. Proper maintenance is so important to keep up. I think our community does a decent job of providing recreational activities better than some communities because of our recreation mileage.

"Money taken from tax payers for any services in a community should be regarded as being given with to be used in the most efficient, effective, and guarded manner. I do not wish to see waste.

For the Mayor, we would like to see you at more events in the community. We love Albion, but would be happy to move elsewhere. Albion is not a city that should have an income tax. Property tax payments should be enforced. We work in Lansing and Jackson--where the jobs are--and send our children to school in Jackson--where the schools are. How did Albion manage to squander the public schools? Corruption. If the schools are good, they will stay.

The taxation arrangement for this town has become an annoying hindrance. Most employers do not automatically deduct for Albion City taxes. Who would expect Albion to have city taxes? When there is taxation the givers have expectations!" Please get this survey out to everyone. We need to meet the needs of all citizens of Albion. Thanks for taking the time to develop this survey. It is needed.

I don't understand the college's insistence in being connected with a YMCA - I'm not interested in a YMCA at the college and won't buy a membership if that's the case.

I hope we keep the Y Center providing the exercise programs that we have currently

I truly enjoyed Victor Park last year and want to thank the team that takes care of the Parks. Keep up the good work!

Albion is fortunate to have so many beautiful parks... restroom facilities would enhance the parks.

Can you partner with the college to offer Equine programs/riding lessons for older kids that wouldn't cost a ton of money to sign up?

Nobody I know wants a new Y at Washington Gardner. It's a horrible location that only benefits Albion College. The average community member will never set foot inside. Put it somewhere that people will actually use.

Offering free exercise classes is amazing. Thank you!

I understand the need to combine our Rec with BC YMCA. But it would be nice to have more options. I end up taking my kids to Marshall for their rec programs because they offer so much more and it's well organized. We could learn a lot from how they do their programs.

Lots of money in the account just sitting there not being used. That's why I voted against the rec mileage. Thank you. Eric Krause

I appreciate YMCA joining Albion, but it would be nice to try and involve other groups/businesses/leaders/people who would like to participate and not always being in the shadow of the College or big money investors in the community. Citizens are more than able to come together from their different avenues rather than big Albion business always trying to take the spotlight.

Keep up the great work. Your efforts are being noticed, and we thank you for allowing the melting away of Albion of the past, and are looking forward to the future of what is... Albion

Keep parks better maintained, mowed, nice flowers - will create more ppl coming and holding events in the parks

We appreciate being able to use them

Improve fishing access.

Have organized youth programs. With qualified staff and coaches. Also not operated or ran by Albion College

It would be nice to be a bit more inclusive of your disabled residents

Please take into consideration the work of Untokening.org (10 Principles) and the severe consequences marginalized groups must face when attempting to access public resources like open green spaces, parks, trails, and streets. The City of Albion, as a public, governing body, has to do more to take into consideration all of its residents. This can happen when we start to see whose voice is rarely included in processes such as the revising and updating of plans. Even just the acknowledgement of the injustices faced in our community could be the impetus to open the door for more authentic participation from all residents. But lip service is not what people need. Our community needs people with the desire to act in alignment with principles such as "liberty and justice for all."

I've noticed that the parks are being kept up better under Haley Snyder as City Manager.

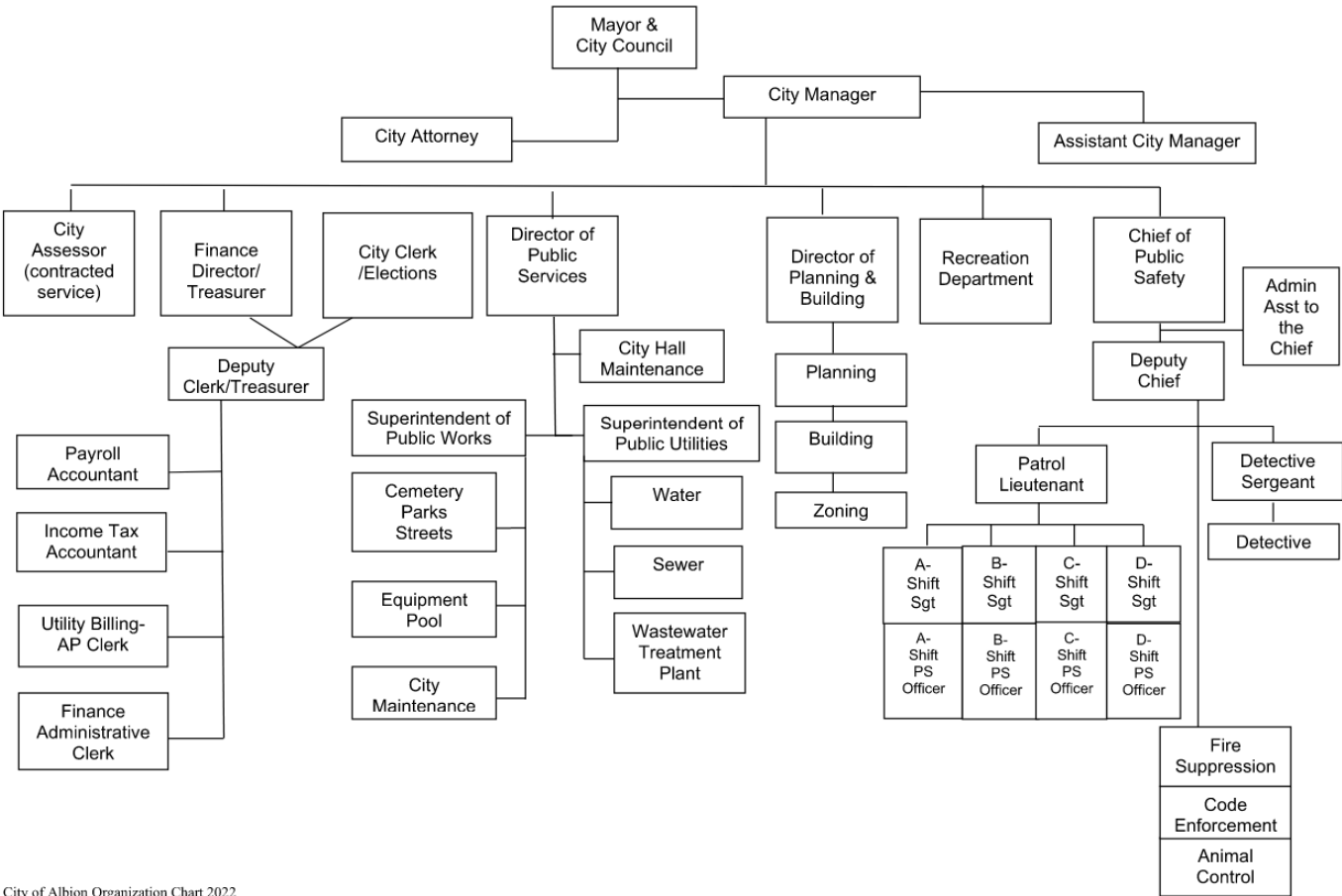
I think the Recreation Dept. has failed to provide programming for youth, especially 8 - 18 year olds. Even before Covid, they could never get anything organized on their own. They need to be out-sourced to an organization experienced with providing programming.

"Signage about rules, enforcing rules ( ie closes at dusk) pick up stations for dog walking. Off leash dogs not permitted. The parks are a real jewel in Albion and the new Y recreation programming is very exciting - I'd like to see more money, time, energy, and care put into both



Appendix D - Organizational Chart – City of Albion

CITY OF ALBION - 2022 - ORGANIZATIONAL CHART



City of Albion Organization Chart 2022

**Appendix E - Recreation Budget**

Calculations as of 11/30/2021

GL NUMBER	DESCRIPTION	2021 ORIGINAL BUDGET	2021 ACTIVITY THRU 11/30/21	2021 PROJECTED ACTIVITY	2022 MGR RECOM'D BUDGET
Dept 775 - PARKS					
ESTIMATED REVENUES					
101-775-402.02	PROPERTY TAXES - COUNTY PARKS MILI	23,960	0	23,960	23,960
101-775-607.00	CHARGES FOR SERVICES-FEES	2,500	3,770	3,900	5,000
101-775-675.00	CONTRIBUTIONS-PRIVATE INDIVIDU	0	200	200	500
TOTAL ESTIMATED REVENUES		26,460	3,970	28,060	29,460
APPROPRIATIONS					
101-775-702.00	SALARIES AND WAGES	84,515	68,318	84,515	85,350
101-775-702.01	LEAVE BANK PAYOUTS AND/OR BONUSES	1,145	1,868	3,000	1,350
101-775-702.03	SALARY & WAGES - COVID-19 RELATED	0	212	212	0
101-775-703.00	PART TIME WAGES	4,160	12,599	15,000	10,400
101-775-704.00	OVERTIME	5,650	17,454	20,000	18,050
101-775-707.00	ON CALL PAY	1,750	1,225	1,750	1,750
101-775-714.00	MEDICARE	1,410	1,418	1,805	1,690
101-775-715.00	FICA	6,030	6,061	7,720	7,250
101-775-716.00	HOSPITALIZATION INSURANCE	42,820	36,061	44,000	45,350
101-775-717.00	LIFE INSURANCE	245	195	245	245
101-775-719.00	PENSION CONTRIBUTION	6,385	5,980	7,355	7,265
101-775-719.01	MERS DB CONTRIBUTION	9,335	7,778	9,335	9,705
101-775-719.02	EMPLOYER CONT.- MERS FORFEITURE AI	(3,235)	(4,599)	(4,599)	0
101-775-720.00	WORKERS COMPENSATION	2,610	2,415	2,900	2,010
101-775-721.00	UNEMPLOYMENT INSURANCE	20	18	30	35
101-775-723.00	RETIREE HEALTH SAVINGS CONTRIB	1,815	1,632	2,180	2,065
101-775-724.00	VEHICLE ALLOWANCE	95	81	95	95
101-775-741.00	UNIFORMS	1,250	2,429	3,000	2,500
101-775-746.00	TOOLS AND EQUIPMENT	800	1,054	2,000	1,250
101-775-750.00	SAFETY MATERIALS (OSHA)	500	1,721	1,800	1,500
101-775-776.00	MATERIALS AND SUPPLIES	7,500	6,698	7,500	7,500
101-775-778.00	GASOLINE	6,500	7,605	7,200	6,500
101-775-780.00	VEHICLE & EQUIP MAINT SUPPLIES	4,500	3,627	4,250	3,500
101-775-785.00	BUILDING & GROUNDS REPAIR & MA	4,500	2,151	4,000	5,500
101-775-801.00	PROFESSIONAL SERVICES	0	0	0	9,500
101-775-802.00	CONTRACTUAL SERVICES	2,000	14,669	15,000	5,000
101-775-851.00	TELEPHONE	700	865	980	700
101-775-885.00	TRAINING	250	0	0	500
101-775-921.00	GAS	700	983	1,300	1,500
101-775-922.00	ELECTRICITY	7,500	7,650	9,400	7,500
101-775-941.00	BUILDING RENTAL	4,000	3,667	4,000	4,000
101-775-943.00	EQUIPMENT RENTAL	20,000	16,958	18,750	20,000
101-775-950.00	INSURANCE AND BONDS	4,500	4,108	4,700	4,725
101-775-955.00	MISCELLANEOUS	50	227	227	0
101-775-999.00	TRANSFER OUT	750	750	750	0
TOTAL APPROPRIATIONS		230,750	233,878	280,400	274,285
NET OF REVENUES/APPROPRIATIONS - 775 - PARKS		(204,290)	(229,908)	(252,340)	(244,825)
ESTIMATED REVENUES - FUND 101		26,460	3,970	28,060	29,460
APPROPRIATIONS - FUND 101		230,750	233,878	280,400	274,285
NET OF REVENUES/APPROPRIATIONS - FUND 101		(204,290)	(229,908)	(252,340)	(244,825)
BEGINNING FUND BALANCE		1,564,647	1,564,647	1,564,647	1,312,307
ENDING FUND BALANCE		1,360,357	1,334,739	1,312,307	1,067,482

Calculations as of 11/30/2021

GL NUMBER	DESCRIPTION	2021 ORIGINAL BUDGET	2021 ACTIVITY THRU 11/30/21	2021 PROJECTED ACTIVITY	2022 MGR RECOM'D BUDGET
Dept 780 - RECREATION					
ESTIMATED REVENUES					
208-780-402.00	CURRENT PROPERTY TAXES	170,500	171,494	172,500	175,000
208-780-402.01	PROPERTY TAX CHARGEBACKS	(1,500)	(191)	(1,500)	(1,500)
208-780-410.00	DELINQUENT PERSONAL PROP TAXES	100	0	50	100
208-780-424.00	PAYMENTS IN LIEU OF TAXES	2,200	2,645	2,645	2,700
208-780-445.00	PENALTY & INTEREST ON TAXES	950	1,418	1,500	1,500
208-780-573.00	LOCAL COMMUNITY STABILIZATION STA	28,500	29,486	29,486	29,750
208-780-608.00	RECREATION FEES	3,500	0	0	0
208-780-665.00	INTEREST	350	141	150	200
208-780-667.00	RENTS	0	101	125	150
208-780-675.00	CONTRIBUTIONS-PRIVATE INDIVIDU	250	0	0	0
208-780-676.00	REIMBURSEMENTS & RESTITUTIONS	100	0	0	0
TOTAL ESTIMATED REVENUES		204,950	205,094	204,956	207,900
APPROPRIATIONS					
208-780-702.00	SALARIES AND WAGES	38,100	3,333	3,335	0
208-780-702.01	LEAVE BANK PAYOUTS AND/OR BONUSES	1,200	1,739	1,740	0
208-780-703.00	PART TIME WAGES	60,718	0	0	0
208-780-704.00	OVERTIME	350	0	0	0
208-780-714.00	MEDICARE	1,500	74	75	0
208-780-715.00	FICA	6,415	314	315	0
208-780-717.00	LIFE INSURANCE	225	0	0	0
208-780-719.00	PENSION CONTRIBUTION	2,545	4	0	0
208-780-719.02	EMPLOYER CONT.- MERS FORFIETURE AI	(1,315)	0	0	0
208-780-720.00	WORKERS COMPENSATION	3,800	228	228	0
208-780-721.00	UNEMPLOYMENT INSURANCE	40	3	3	0
208-780-723.00	RETIREE HEALTH SAVINGS CONTRIB	730	(2)	0	0
208-780-726.00	OFFICE SUPPLY	250	0	0	0
208-780-728.00	DUES, BOOKS, PERIODICAL	20	0	0	0
208-780-776.00	MATERIALS AND SUPPLIES	250	518	518	0
208-780-778.00	GASOLINE	500	1,420	1,750	2,000
208-780-780.00	VEHICLE & EQUIP MAINT SUPPLIES	1,000	0	1,000	2,500
208-780-801.00	PROFESSIONAL SERVICES	0	0	0	9,500
208-780-802.00	CONTRACTUAL SERVICES	22,500	57,512	95,600	115,000
208-780-840.00	ADMINISTRATION FEES	8,260	7,572	8,260	8,500
208-780-851.00	TELEPHONE	1,600	218	275	275
208-780-857.00	TRAVEL	100	0	0	0
208-780-882.00	PROGRAM EXPENSES	12,500	0	0	0
208-780-882.01	SENIOR CENTER	10,875	8,156	10,875	10,875
208-780-922.00	ELECTRICITY	2,500	2,478	3,250	3,500
208-780-941.00	BUILDING RENTAL	25,000	0	0	0
208-780-943.00	EQUIPMENT RENTAL	9,500	8,708	9,500	3,500
208-780-950.00	INSURANCE AND BONDS	1,900	1,752	1,900	1,995
208-780-955.00	MISCELLANEOUS	150	0	0	0
TOTAL APPROPRIATIONS		211,213	94,027	138,624	157,645
NET OF REVENUES/APPROPRIATIONS - 780 - RECREATION		(6,263)	111,067	66,332	50,255
ESTIMATED REVENUES - FUND 208		204,950	205,094	204,956	207,900
APPROPRIATIONS - FUND 208		211,213	94,027	138,624	157,645
NET OF REVENUES/APPROPRIATIONS - FUND 208		(6,263)	111,067	66,332	50,255
BEGINNING FUND BALANCE		191,853	191,853	191,853	258,185
ENDING FUND BALANCE		185,590	302,920	258,185	308,440

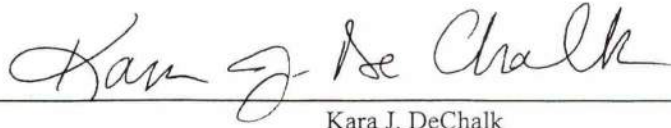
**Appendix F - Resolution**



**Appendix G – Notice**

## AFFIDAVIT OF PUBLISHER

STATE OF MICHIGAN }  
County of Calhoun

  
Kara J. DeChalk

being duly sworn, says: I am the Account Manager of The Recorder, a newspaper printed and circulated in said county since 1868. The attached is a printed copy of a notice which was published the 16th day of December 2021.

Sworn to and subscribed before me this 4 day  
of January 2022.

AMANDA J. LABUN  
NOTARY PUBLIC - STATE OF MICHIGAN  
COUNTY OF JACKSON  
ACTING IN CALHOUN COUNTY  
MY COMMISSION EXPIRES JUNE 18, 2025

  
Notary Public, Calhoun County, Michigan

### PUBLIC HEARING NOTICE ON THE CITY OF ALBION PROPOSED 2022-2026 FIVE-YEAR COMMUNITY RECREATION PLAN

The City of Albion will hold a Public Hearing on the proposed 2022-2026 Five-Year Community Recreation Plan on Monday, January 3, 2022, at 7:00 p.m. at the City of Albion City Hall, 112 Cass St, Albion, Michigan 49224.

The public is invited to review and comment on the proposed City of Albion 2022-2026 Community Recreation Plan during normal business hours at the City of Albion City Hall, 112 W. Cass St., Albion, Michigan 49224 and online at [www.cityofalbionmi.gov](http://www.cityofalbionmi.gov). Written comments received through January 3, 2022 will receive responses in the final Five-Year Community Recreation Plan. Written comments should be sent to Ben Baker at Wightman & Associates, Inc., [bbaker@gowightman.com](mailto:bbaker@gowightman.com)

## AFFIDAVIT OF PUBLISHER

STATE OF MICHIGAN }  
County of Calhoun

  
Kara J. DeChalk

being duly sworn, says: I am the Account Manager of The Recorder, a newspaper printed and circulated in said county since 1868. The attached is a printed copy of a notice which was published the 9th day of December 2021.

Sworn to and subscribed before me this \_\_\_\_\_ day  
of January 2021. 2022

AMANDA J. LABUN  
NOTARY PUBLIC - STATE OF MICHIGAN  
COUNTY OF JACKSON  
ACTING IN CALHOUN COUNTY  
MY COMMISSION EXPIRES JUNE 18, 2025



Notary Public, Calhoun County, Michigan

### NOTICE OF PUBLIC REVIEW AND COMMENT ON THE CITY OF ALBION PROPOSED 2022-2026 FIVE-YEAR COMMUNITY RECREATION PLAN

The proposed City of Albion 2022-2026 Community Recreation Plan will be available for public review and comments beginning Friday, December 3, 2021, through Monday, January 3, 2022, during normal business hours at the City of Albion City Hall, 112 W. Cass St., Albion, Michigan 49224, and online at [www.cityofalbionmi.gov](http://www.cityofalbionmi.gov)

The public is invited to review and comment on the plan. Written comments received through January 3, 2022 will receive responses in the final Five-Year Community Recreation Plan. Written comments should be sent to Ben Baker at Wightman & Associates, Inc., [bbaker@gowightman.com](mailto:bbaker@gowightman.com)

The City of Albion will hold a Public Hearing on the proposed 2022-2026 Five-Year Community Recreation Plan on Monday, January 3, 2022, at 7:00 p.m. at the City of Albion City Hall, 112 Cass St, Albion, Michigan 49224.

**Appendix H – Meeting Minutes**

## Appendix I – Previous Recreation Grants



GRANT HISTORY

Grantee

City of Albion - Calhoun County

**Project No.** 26-00151 **Project County:** Calhoun **Project Year:** 1968  
**Project title:** McIntosh Park  
**Project Status:** Grant Closed **Grant Amount:** \$25,079.00

Scope Item

- Comfort Station
- Court games
- Landscaping
- Picnic Facilities
- Play equipment
- Softball diamonds

**Project Description:** Acquire about .65 acres to be developed into a park. Proposed development will consist of upgrading existing fill, seeding, fertilizing, picnic facilities, court games, softball diamonds, comfort station, shade and landscaping.

**Project No.** 26-01060 E4 **Project County:** Calhoun **Project Year:** 1978  
**Project title:** Victory Park and Canoe Ramp Park (Barnes Park)  
**Project Status:** Grant Closed **Grant Amount:** \$15,489.55

Scope Item

- Canoe ramp
- Fitness trail
- Hockey boards
- Lighted sled run
- LWCF plaque
- Overhead wire burial
- Soccer goals
- Tables and grills

**Project Description:** Canoe Ramp Park (Barnes Park) - canoe ramp, LWCF plaque Victory Park - overhead wire burial, tables, grills, lighted sled run, soccer goals, hockey boards, fitness trail, LWCF plaque

**Project No.** 26-01165 **Project County:** Calhoun **Project Year:** 1980  
**Project title:** Water Street Park (Barnes Park)  
**Project Status:** Grant Closed **Grant Amount:** \$2,931.34

Scope Item





GRANT HISTORY

Grantee

City of Albion - Calhoun County

Landscaping  
Plaque  
Tables, Grill and trash cans  
Water fountain and service  
**Project Description:** Develop: tables, grills, trash cans, water fountain and service, landscaping, --caone ramp parking lot--lifegaurd chairs, LWCF sign, picnic areas

<b>Project No.</b> TF00-194	<b>Project County:</b> Calhoun	<b>Project Year:</b> 2000
<b>Project title:</b> Stoffer Plaza Improvements		
<b>Project Status:</b> Grant Closed		<b>Grant Amount:</b> \$55,500.00

Scope Item

Concrete Removal  
Landscape/Greenspace  
River Access Dock/Canoe Livery  
**Project Description:** Development of a Kalamazoo River access point, including concrete removal, river access dock, canoe livery and landscaping.

<b>Project No.</b> TF01-070	<b>Project County:</b> Calhoun	<b>Project Year:</b> 2001
<b>Project title:</b> Kalamazoo Riverfront Trail Acquisitions		
<b>Project Status:</b> Grant Closed		<b>Grant Amount:</b> \$56,250.00

Scope Item

**Project Description:** Acquisition of about 1.75 acres (three parcels) along the Kalamazoo River to give the City control of approximately one-half mile of river frontage with the intent to create a city-wide trail system. A Small Acquisition Grants Initiative (SAGI) project.

<b>Project No.</b> TF07-004	<b>Project County:</b> Calhoun	<b>Project Year:</b> 2007
<b>Project title:</b> Rieger Park Swimming and Beach Project		
<b>Project Status:</b> Grant Closed		<b>Grant Amount:</b> \$127,500.00

Scope Item

Control Structures  
Excavation and Sand  
Handicap Access  
Renovate Restrooms  
**Project Description:** Project is to dredge existing pond, renovate building for restrooms and changing area, construct walkway, and renovate water control structure for beach and ice skating purposes.



## GRANT HISTORY

**Grantee**

**City of Albion - Calhoun County**

<b>Project No.</b> TF86-242	<b>Project County:</b> Calhoun	<b>Project Year:</b> 1986
<b>Project title:</b> Riverfront Development		
<b>Project Status:</b> Grant Closed		<b>Grant Amount:</b> \$45,500.00

## Scope Item

**Project Description:** To acquire approximately 17 acres along the Kalamazoo River in the City of Albion.

<b>Project No.</b>	<b>TF91-305</b>	<b>Project County:</b>	<b>Calhoun</b>	<b>Project Year:</b>	<b>1991</b>
<b>Project title:</b>	Riverfront Acquisition - Phase II				
<b>Project Status:</b>	Withdrawn			<b>Grant Amount:</b>	\$9,800.00

## Scope Item

**Project Description:** Acquisition of abandoned railroad right-of-way and trestle as part of an ongoing project to create a linear riverfront park.

<b>Project No.</b>	TF15-0223	<b>Project County:</b>	Calhoun	<b>Project Year:</b>	2015
<b>Project title:</b>	Albion River Trail Expansion Project				
<b>Project Status:</b>	Grant Closed			<b>Grant Amount:</b>	\$398,200.00

## Scope Item

## Bench

## Bike Rack

Trail 6' wide or more

**Project Description:** Development to construct 1 mile of trail at the hub of several regional trail networks, including the Iron Belle Trail, the Great Lake to Lake Trail, and the North County Trail. The trail will commence at the eastern terminus of the existing Albion River Trail in Victory Park, and will extend south through Albion College property that includes agricultural fields and a woodlot, and overlooks the Nancy G. Held Equestrian Center. The trail will exit through the Riverside Cemetery, where it will connect with M-99. The 10'-wide trail will provide access to scenic off-road portions of Albion College property while making an important connection with several regional trail networks.

<b>Project No.</b>	TF17-0188	<b>Project County:</b>	Calhoun	<b>Project Year:</b>	2017
<b>Project title:</b>	Albion River Trail Expansion				
<b>Project Status:</b>	PA Executed			<b>Grant Amount:</b>	\$340,000.00

## Scope Item



## GRANT HISTORY

---

**Grantee**

**City of Albion - Calhoun County**

---

**Project Description:** Development of a trail to extend the Albion River Trail system on the west side of the city. This project is part of a larger push by the Calhoun County Trailway Alliance, the Michigan Trails and Greenways Alliance, MDNR and many others to fill the gaps that exist along the trail systems. This project is part of a larger plan to complete these regional trails. Albion, Michigan is located at a "hub" for three major recreational trails in the state: The Iron Belle Trail, the Great Lake-to-Lake Trail, and the North Country National Scenic Trail.

---

**Total number of projects:** 10

**Total Amount of Grant Given** \$1,076,249.89