

Request for Statements of Interest and Qualifications of Engineer Design Professionals for Expansion of City of Conway's Crabtree Greenway

Addendum #1

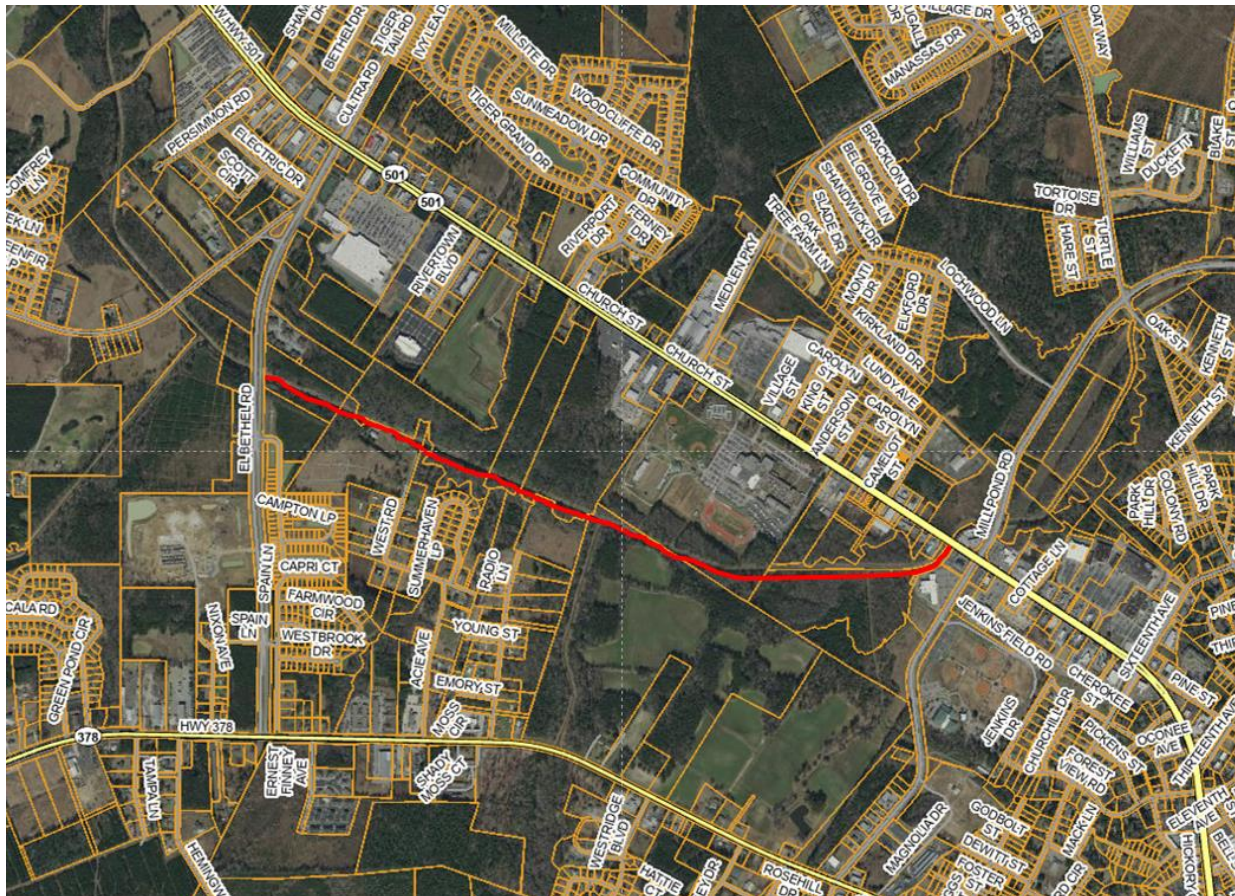
March 18, 2024

QUESTION #1: I talked with Horry County about the trail, they said it shouldn't be a problem to build it in their easement we would just need to do an encroachment permit. Are you guys not wanting to go inside their easement?

RESPONSE #1: Horry County's easement is for maintenance, and we would need to request permission to expand it for public access. We would prefer to place it wholly within the existing easement.

QUESTION #2: Is this segment of trail from El Bethel Road to 501 near Mill Pond Road or is to extend to Mill Pond Road near 701?

RESPONSE #2: From El Bethel Road to 501 near Mill Pond Road. See highlighted are in red below.



QUESTION #3: Can you clarify item 1e. under RFP Components, "List Professional Organizations/Associations firm is a member of"? Should this list include organizations the firm as a whole is involved in, or individual employees?

RESPONSE #3: Both can be included.