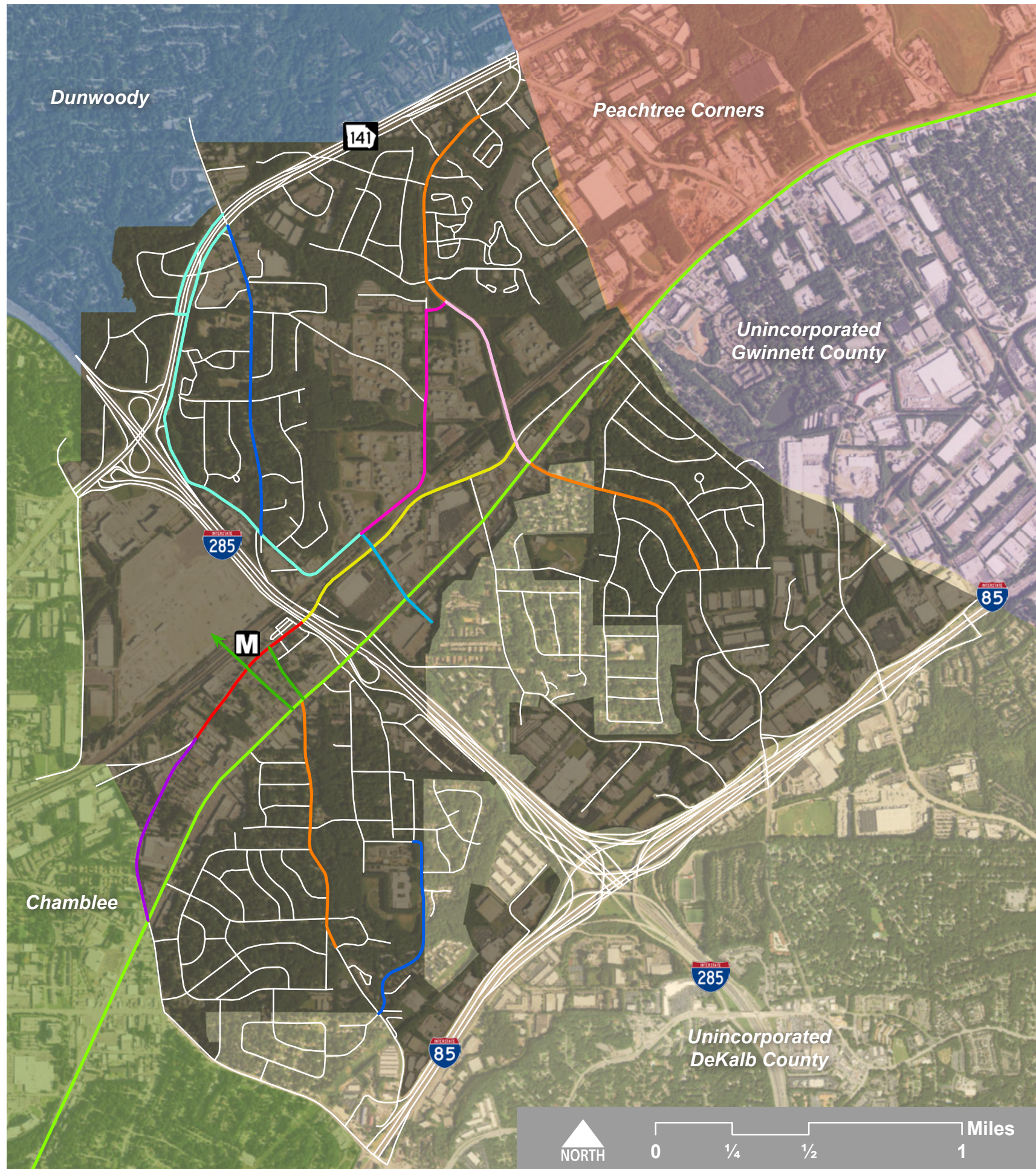


# THE CITY OF **Doraville** Bike/Ped Project Pipeline

*Diversity, Vitality, Community*

*Last updated: November 1, 2016*

The City of Doraville has planned a new bicycle and pedestrian network throughout the city to provide safe connections from residences and businesses to MARTA and adjacent cities. This map displays planned projects along existing corridors only. Projects are listed in time order.



- **New Peachtree Road Streetscape**  
 Protected bike lanes & sidewalk widening
- **Traffic Calming & Stormwater Mitigation**  
 Sharrows & completed sidewalks; multi-use path along Winters Chapel
- **New Peachtree Road Phase II**  
 Bike lane striping & completed sidewalks
- **Buford Highway LCI**  
 Complete road diet to improve bike & ped infrastructure
- **New Downtown Doraville**  
 Transformation into urban complete street; extension into Assembly
- **Flowers Road Multimodal Connections**  
 Multimodal connections from new residential development to MARTA
- **Longmire Road**  
 Striped bike lanes and improved sidewalks from Nexus to MARTA
- **Traffic Calming & Stormwater Mitigation Phase II**  
 Sharrows & completed sidewalks
- **Shallowford Road Multimodal Connections**  
 Bike infrastructure & completed sidewalks
- **Winters Chapel Scenic Route**  
 Multimodal connections through new public art in Tank Farm District
- **Oakcliff Road Connections**  
 Completing Peachtree Gateway bike/ped network