



Doraville Citywide Mobility Plan

SECOND PUBLIC MEETING:

Sharing Project Ideas



November 19, 2020

Agenda for Today

1. **Introductions & Meeting Format**
2. **Project Overview & Schedule**
3. **Key Themes**
4. **Draft Project Candidates**
5. ***Interactive “Open House” & Project Feedback Session***

Zoom Instructions

- Streaming on **Facebook Live**
- Attendees will be **muted during presentation**
- Attendees will be **unmuted during interactive open house**
- Attendees can **ask questions in the chat or about Mural logistics/instructions or raise their hand to ask questions/provide comments**

Project Contact Information



**Naomi Siodmok (Naomi.Siodmok@Doravillega.us)
or call at 1-770-901-7945**

Find out more about the project at: <https://bit.ly/DMPwebsite>

Project Consultant Introduction



Joel Mann
Amelia Casey



Doraville Citywide Mobility Plan

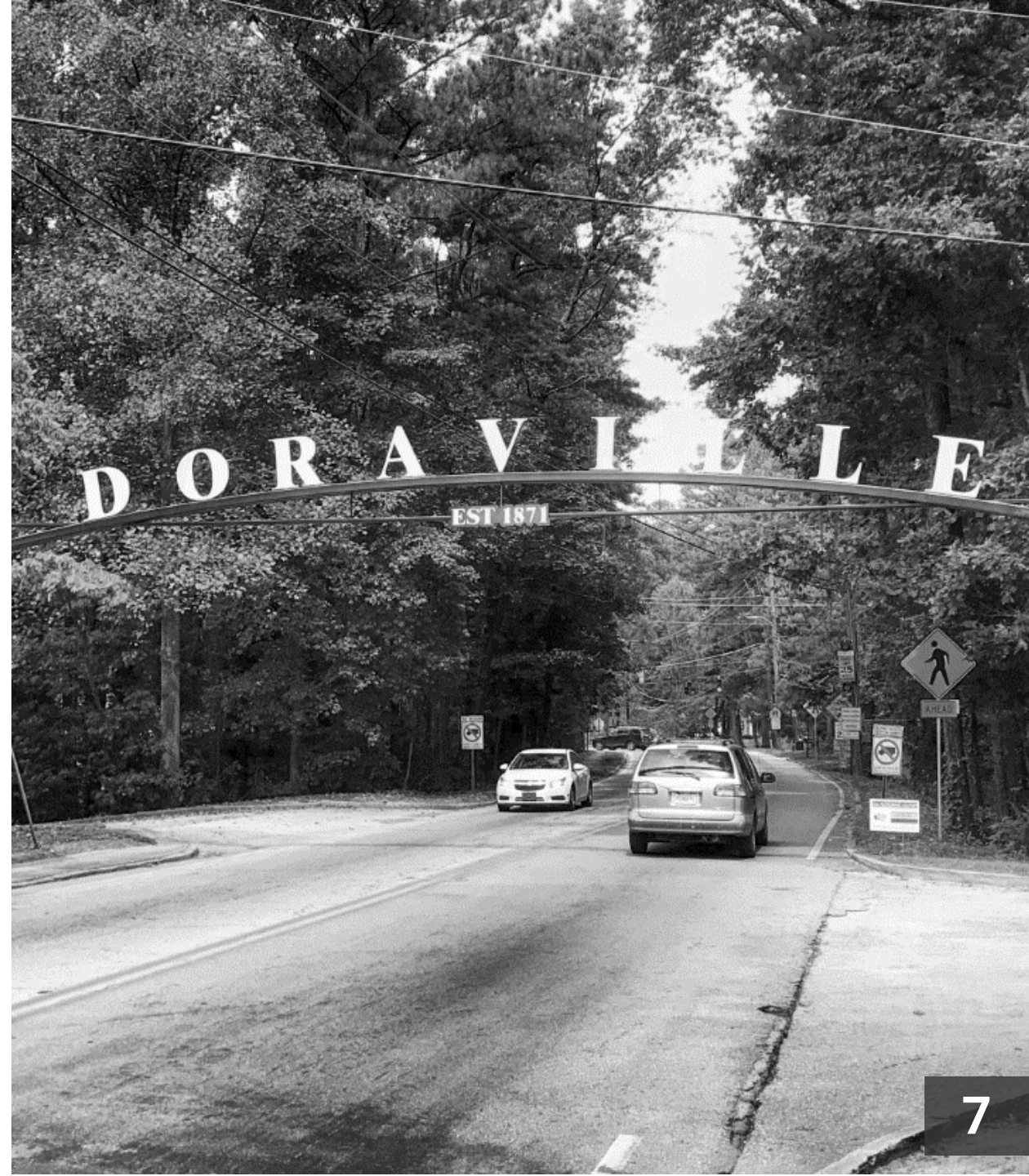
PROJECT OVERVIEW



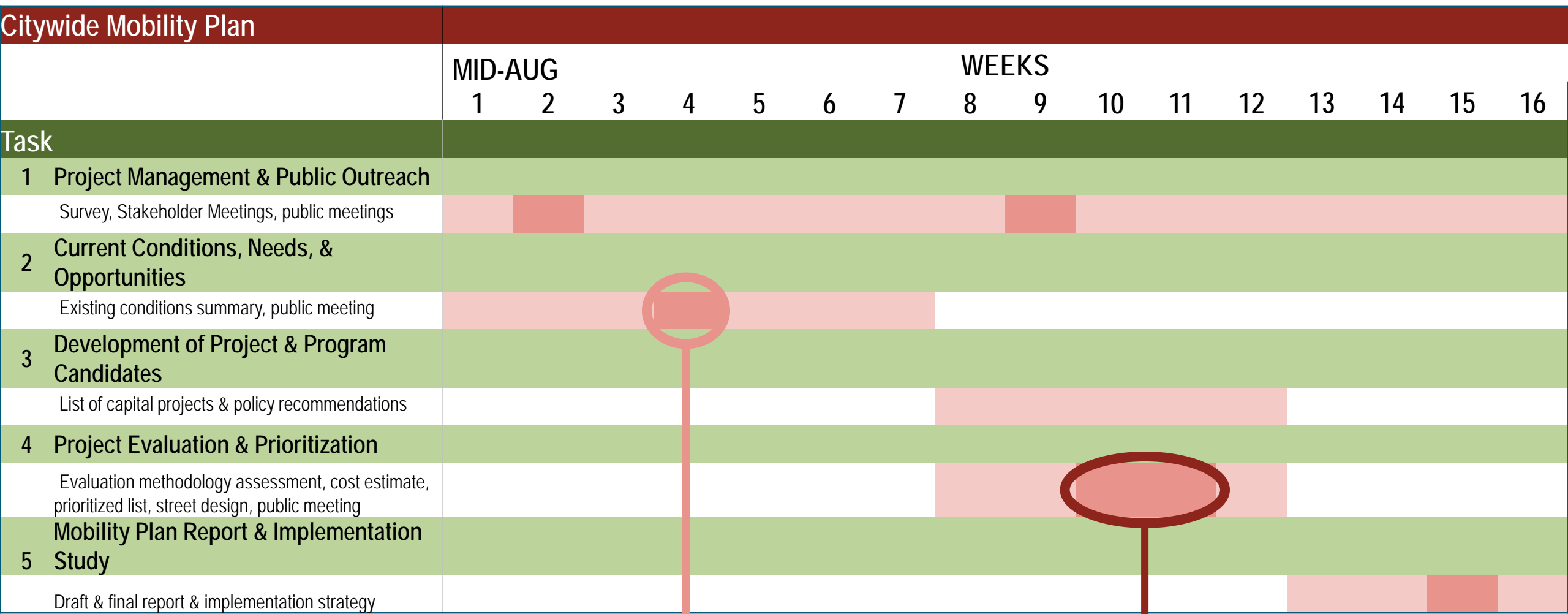
November 19, 2020

Project Overview

- Conduct **comprehensive public outreach efforts** (Survey, stakeholder meetings, public meetings)
- Assess **current conditions** and **identify issue areas for all modes**
- Create preliminary **list of capital projects**
- **Refine** project list, develop **cost estimate**, generate **designs**
- Develop a **final report** and **implementation strategy**



Project Schedule & Public Outreach Efforts



Virtual Public Meeting – Sept 10 from 6:00PM – 8:00PM

Virtual Public Meeting Project Evaluation and Feedback– 11/19



Doraville Citywide Mobility Plan

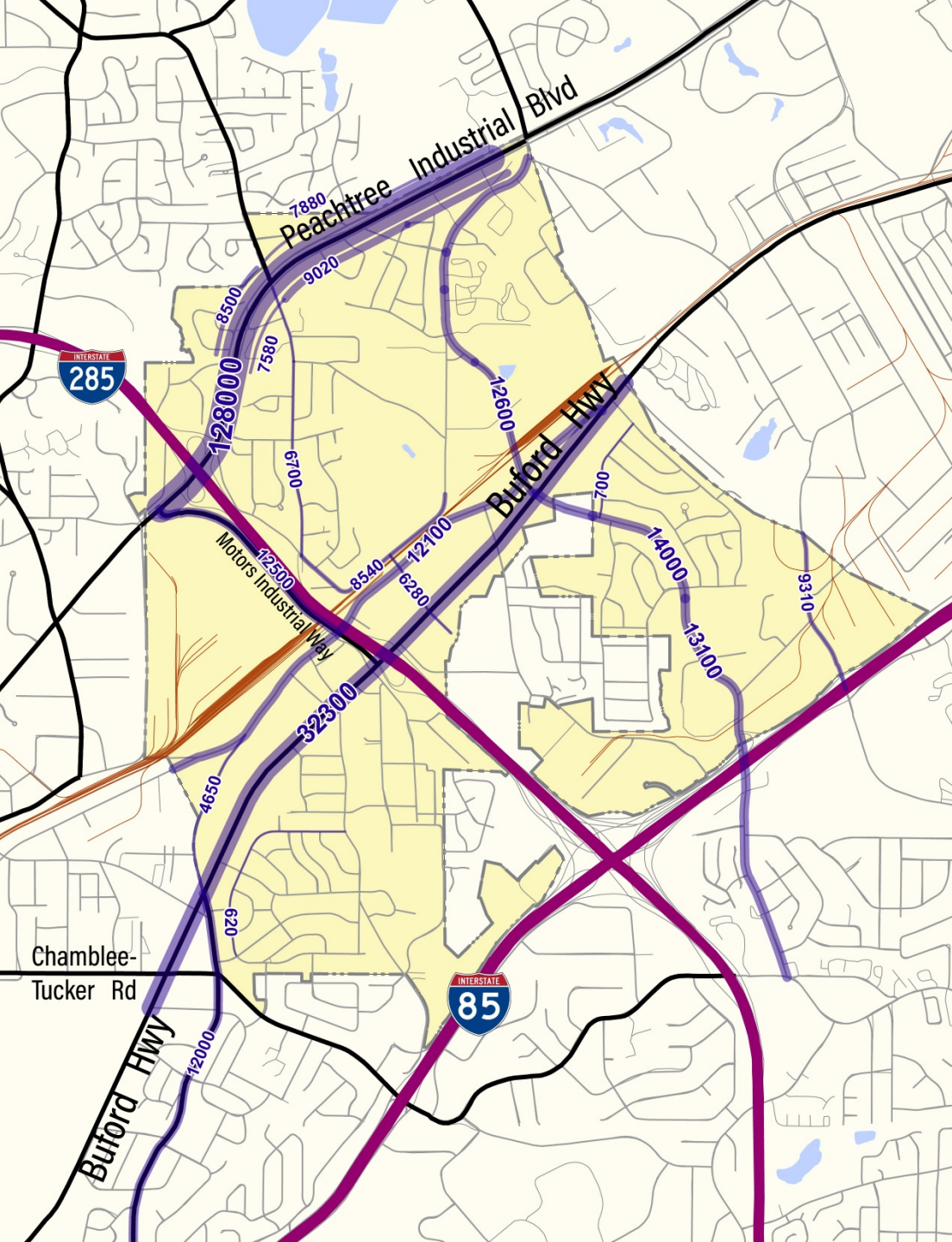
KEY THEMES

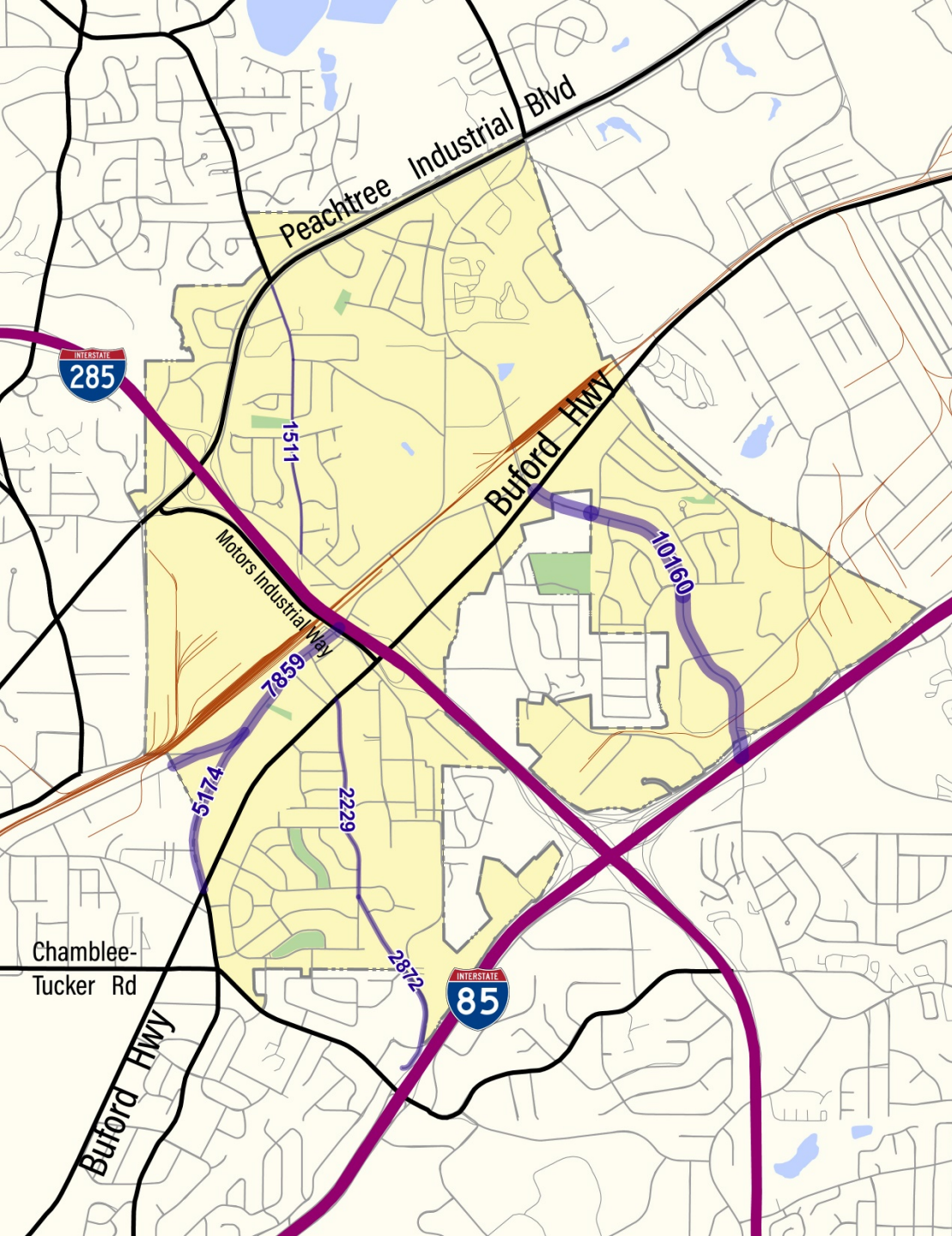


November 19, 2020

Traffic Volumes - 2016

- **Peachtree Industrial Blvd & Buford Highway experiences high volumes**
- **Oakcliff Road acts as a cut-through road (both north and south of Buford Highway)**
- **New Peachtree Road experiences less than half the volumes of Buford Highway**
- **Buford Highway has excess capacity**



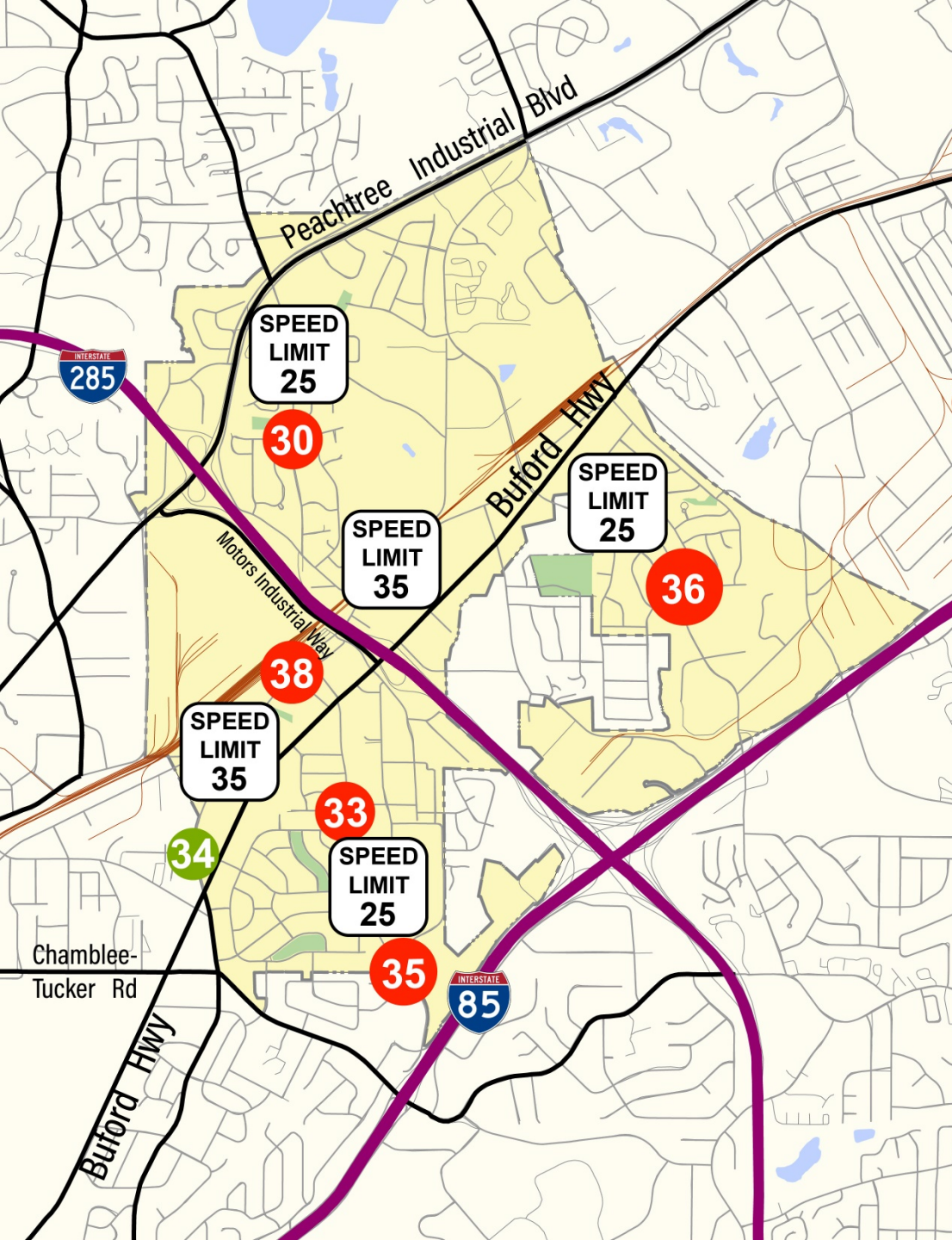


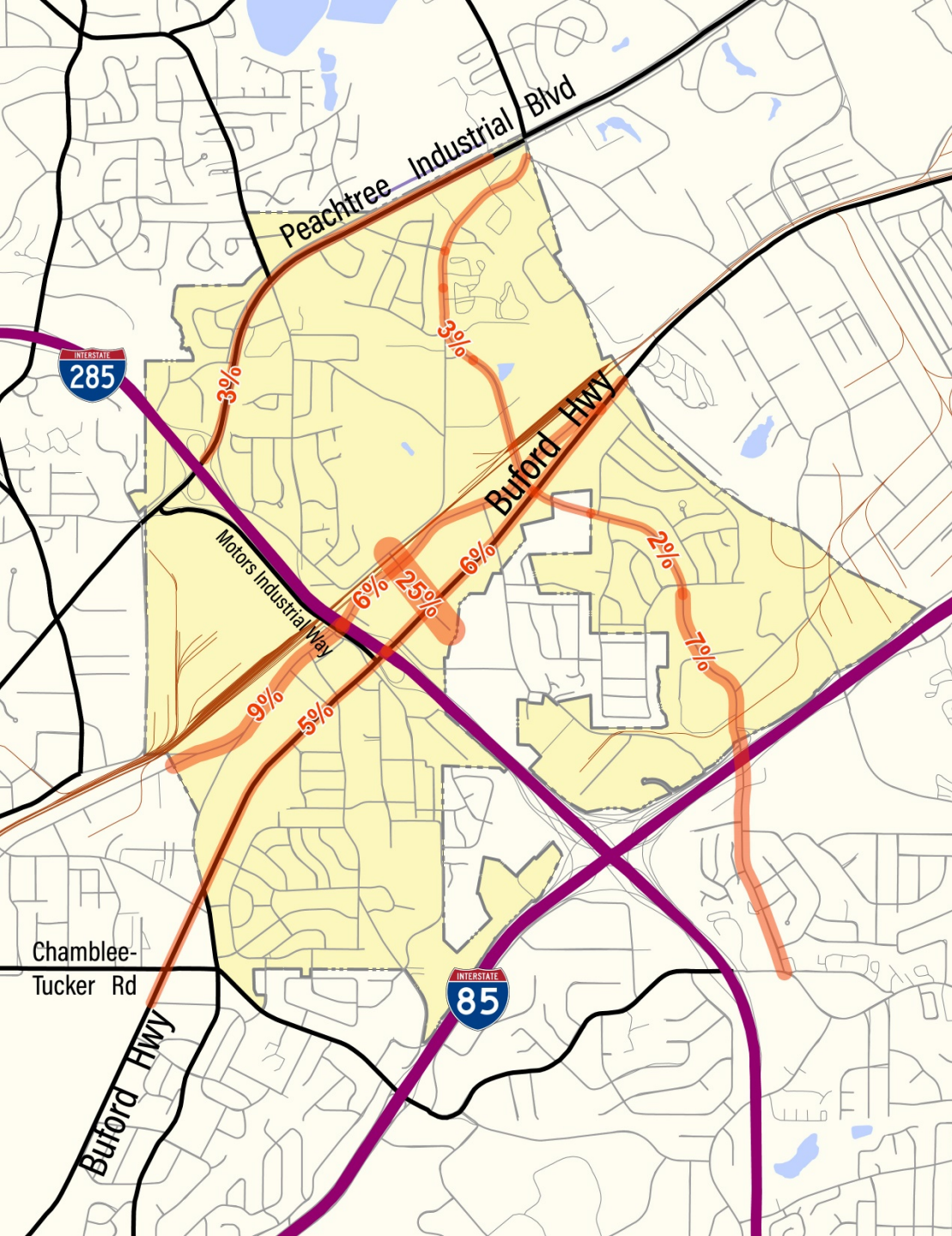
Traffic Volumes - 2020

- **Counts taken during weekday of Fall 2020 on major neighborhood roadways and commercial corridors**
- **High volumes on Oakcliff Road south of Pine Oak Circle**
- **Shallowford Road volumes higher than 2016**
- **Currently, Chestnut Drive experiences higher volumes than Tilly Mill Road**

2020 Traffic Speeds

- **2017 - Speed limit changed on Tilly Mill Road, Chestnut Drive, and Oakcliff Road from 35MPH to 25MPH**
- **85th Percentile Data**
 - Weekday 2020 Fall traffic counts recorded above the speed limit
 - Oakcliff Road vehicles travel over 11MPH higher than the speed limit
 - Vehicles traveling along neighborhood roadways travel faster than the posted speed limit
 - *15% of vehicles are traveling above 5-10MPH over the speed limit*



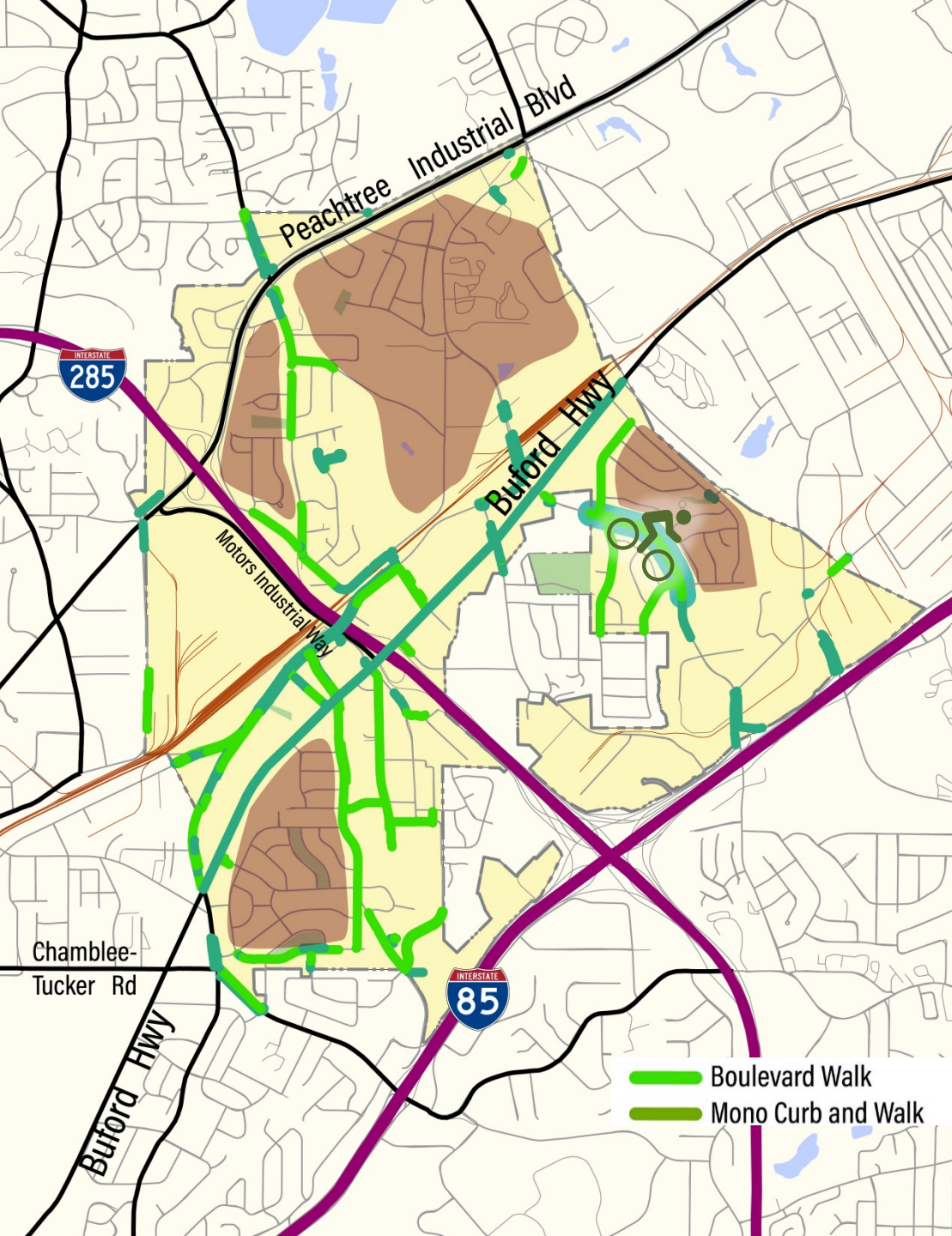


Truck Traffic

- **Truck traffic is low on Winters Chapel Road/Oakcliff Road**
- **New Peachtree Road experiences an increase in truck volumes west of I-285**
- **Longmire Way experiences high truck volumes (to access commercial facilities)**

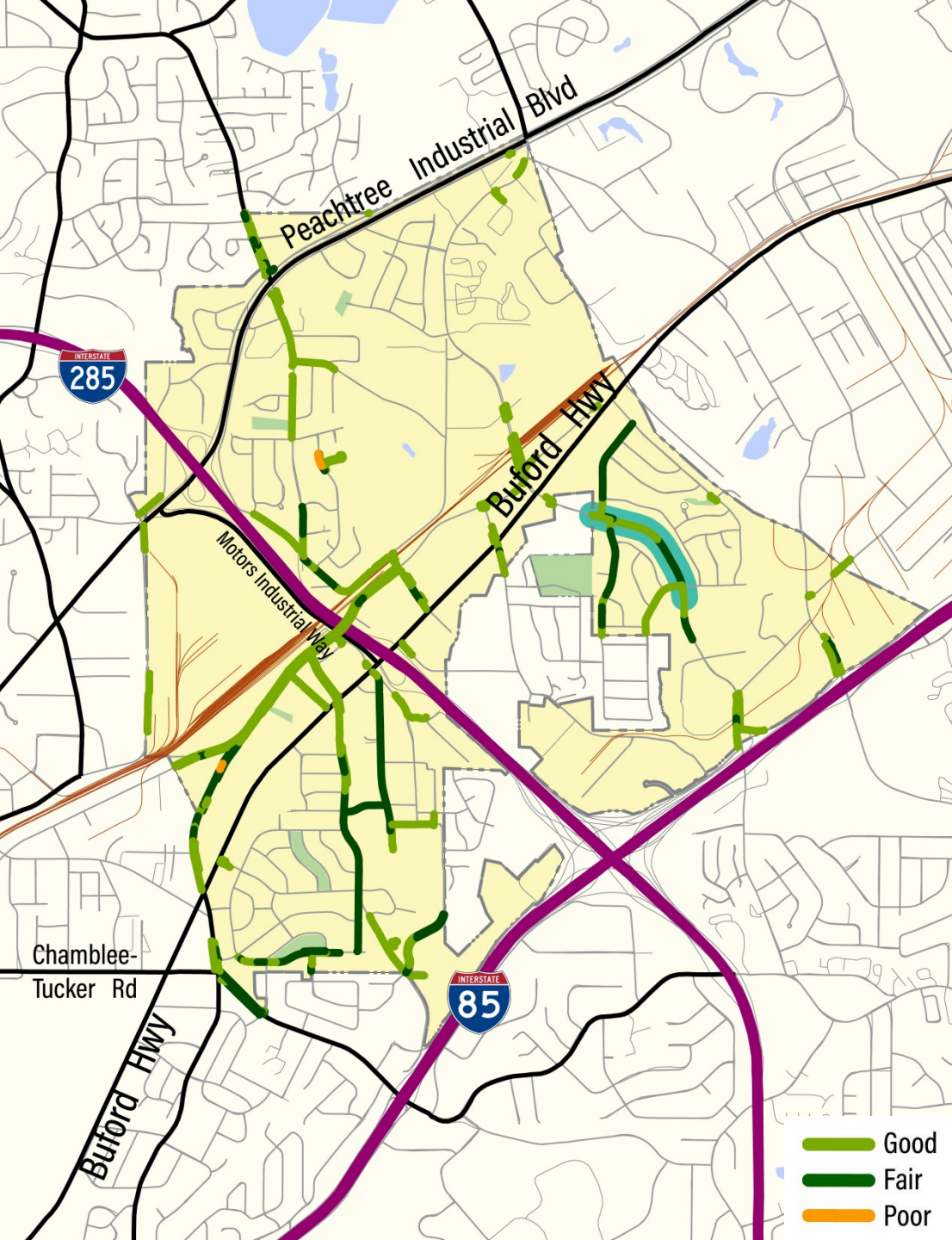
Ped & Bicycle Facilities

- Only one dedicated bicycle facility (unprotected)
- Most neighborhoods do not have a robust sidewalk network
- *Survey results: Most participants find that there are “too few sidewalks” in Doraville*
- *Boulevard Walk – landscaped median*
- *Mono Curb & Walk – no landscaped median*



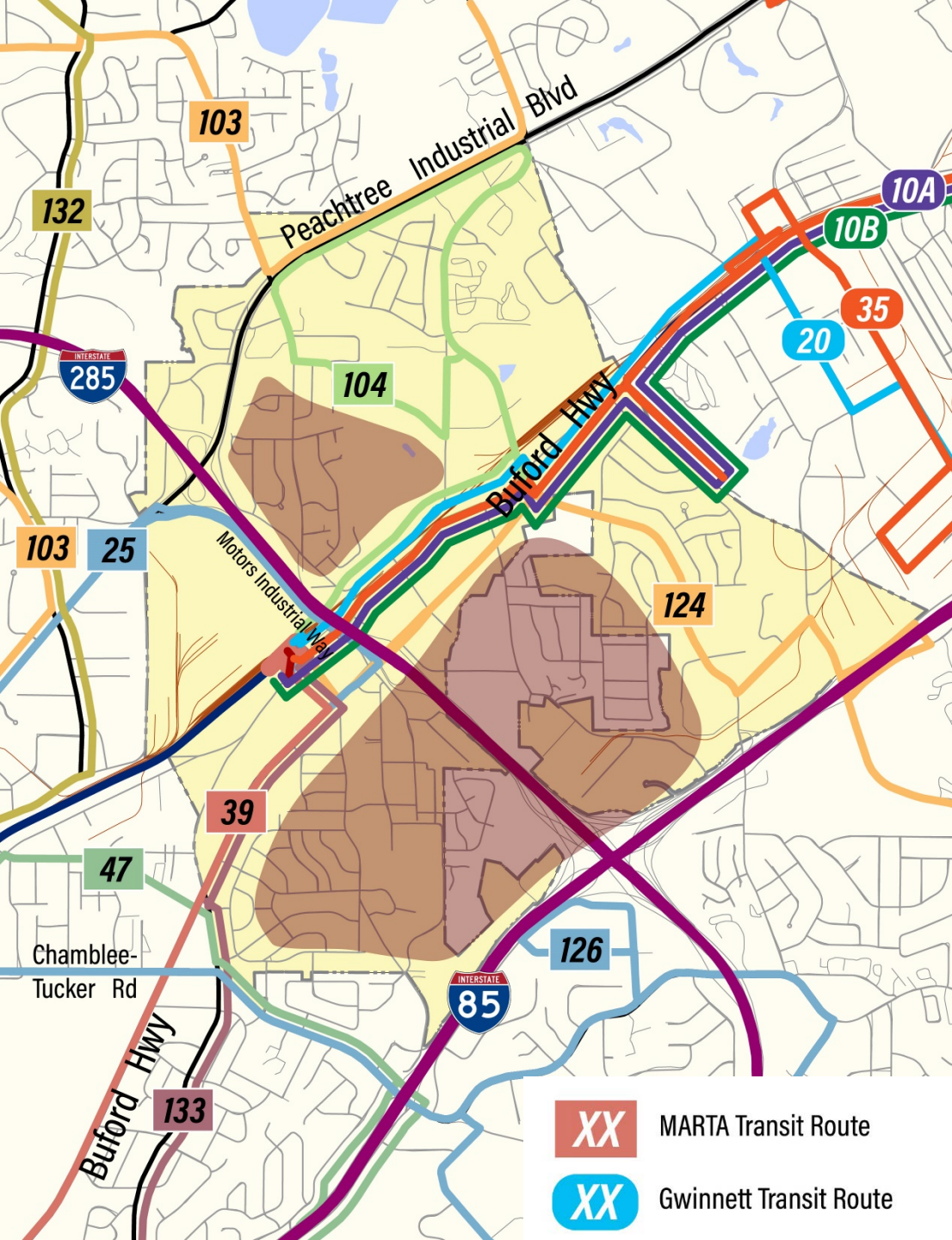
Sidewalk Conditions

- Existing sidewalks are in “good”/ “fair” conditions
- Buford Highway & PIB do not contain any sidewalk condition information
- *Survey results: Participants prioritized improving “local access to connect to community amenities”*



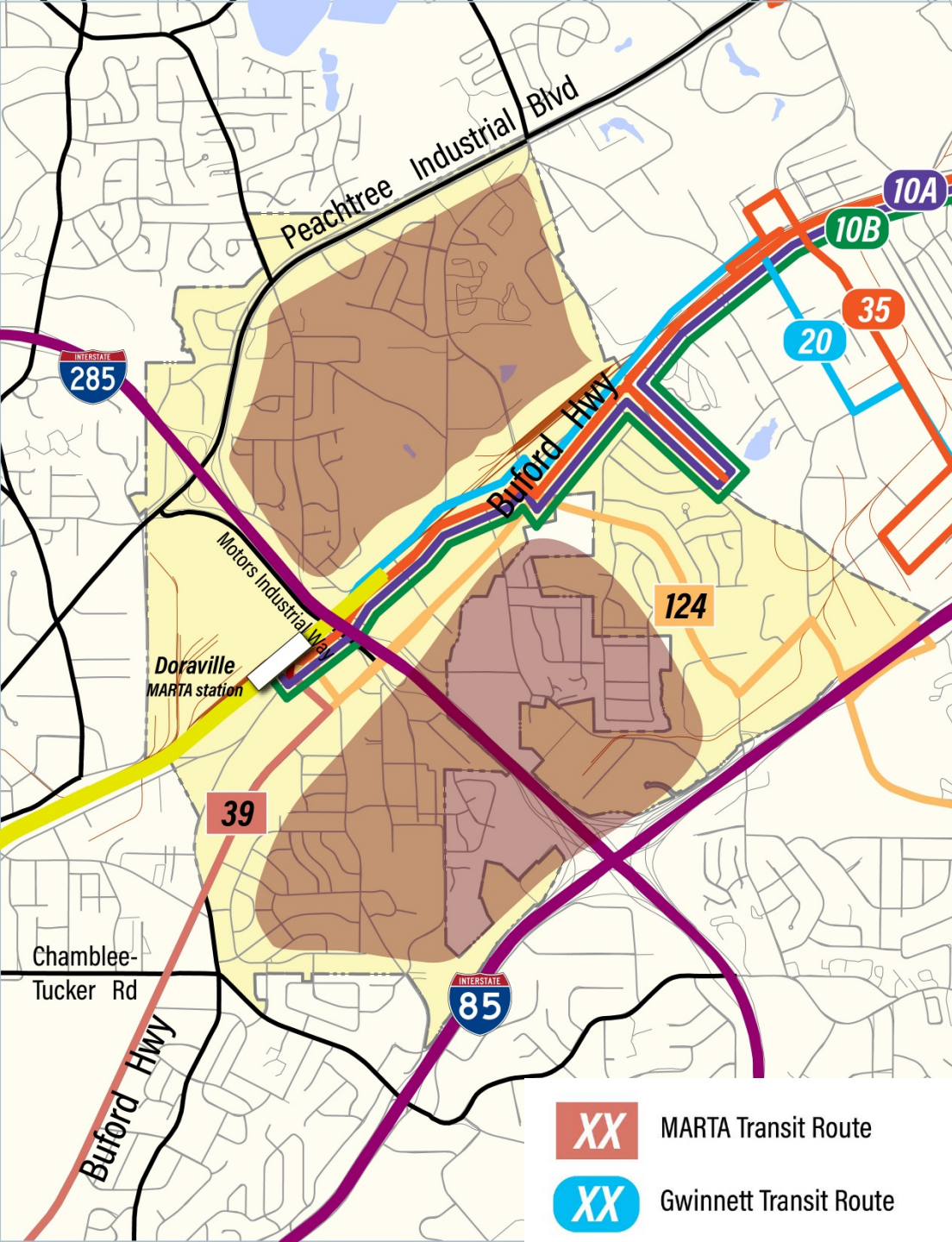
Transit Routes

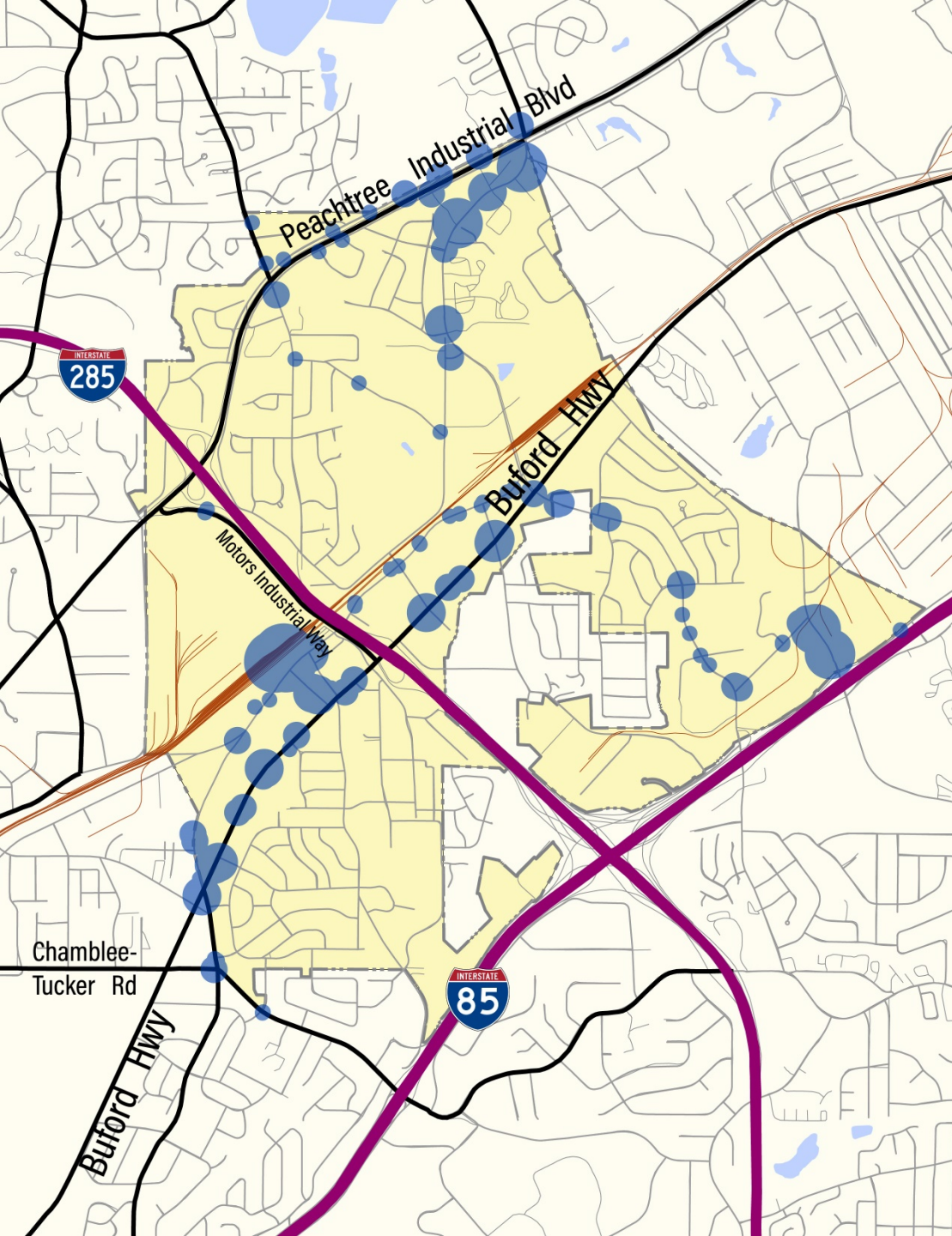
- Most MARTA & Gwinnett transit routes operate on Buford Highway and New Peachtree Road
- Transit routes provide connection to MARTA station
- Route gaps exist in neighborhoods
- Breeze cards must be used to transfer between the GCT and MARTA systems (upcharges apply when transferring to a higher fared service)



COVID Transit Impacts

- 8 routes have been terminated due to COVID
 - Services will not be restored until social distance requirements relaxed
- Key neighborhoods have been isolated due to transit impacts





Ridership 2019 (Pre-COVID)

- High ridership occurs at transit stops adjacent to and at the MARTA station
- Increase ridership occurs at stops serviced by Route 124 at Pleasantdale Road (access to commercial/industrial uses)
- Concentrated ridership at Peachtree Industrial Boulevard and Winters Chapel Road (connection from neighborhoods to MARTA station)

Royal Bus Lines

- Royal Bus Lines - “Ochoa” Bus Route (private shuttle/circulator) frequents MARTA transit stops, especially along Buford Highway
- Majority of riders are Hispanic
- As of 2005, Royal Bus Lines transported approx. 60K riders monthly





**Si toma, no maneje,
TAXI LIBRE lo recoge**

24 HRS DE SERVICIO

Icons: Airplane, Hotel, Bus, Train, Person with suitcase, Person with wheelchair, Person with stroller.

\$45 AL AEROPUERTO DE ATLANTA **10% DE DESCUENTO DE 9AM A 6PM**

20% DE DESCUENTO DE 6AM A 9PM **\$5 DE CARRERA MINIMA** **LO TRASLADAMOS A OTROS ESTADOS**

LLÁMANOS, HABLAMOS ESPAÑOL!

404.552.5151


Quejas y Sugerencias: 678-631-TAXI (8294)




770-455-6660

BAJO NUEVA ADMINISTRACIÓN **DEKALB / GWINNETT**

AHORRE CON NUESTRO SERVICIO DE TARIFAS FIJAS




Icons: Airplane, Hotel, Bus, Train, Person with suitcase, Person with wheelchair, Person with stroller.

CARRERA MINIMA \$5 2 PERSONAS

24 HORAS

770.936.1111

GRACIAS POR PREFERIRNOS Y DARNOS LA OPORTUNIDAD DE SERVIRLE

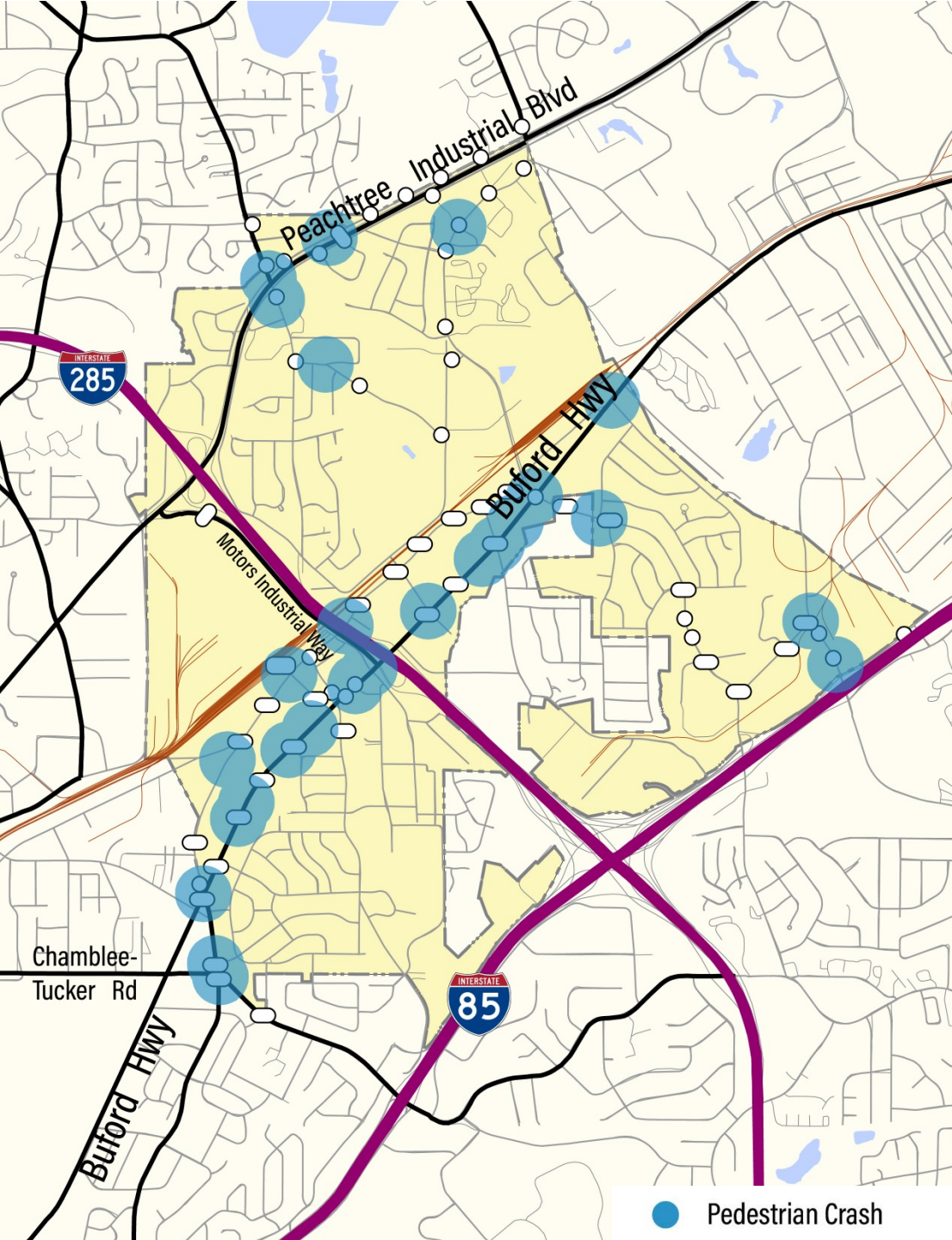



Taxi Programs

- **DeKalb County Taxi License**
 - *What is needed for a taxi permit?*
 - Current valid Georgia driver's license
 - 7-year Motor Vehicle Record (not more than 2 weeks old)
 - Company affiliation letter
 - Birth certificate or naturalization papers or green card/employment authorization card
 - \$100 money order/debit or credit card
- **Approximately +20 official taxi services (excluding rideshare services)**
- **Some services are based around Buford Highway**

Crashes – Ped & Transit

- **Pedestrian crashes occur at transit stop clusters, mostly along Buford Highway and around PIB**
- **Pedestrian crashes also occur at major roadways (potentially due to poor pedestrian crossings for riders)**

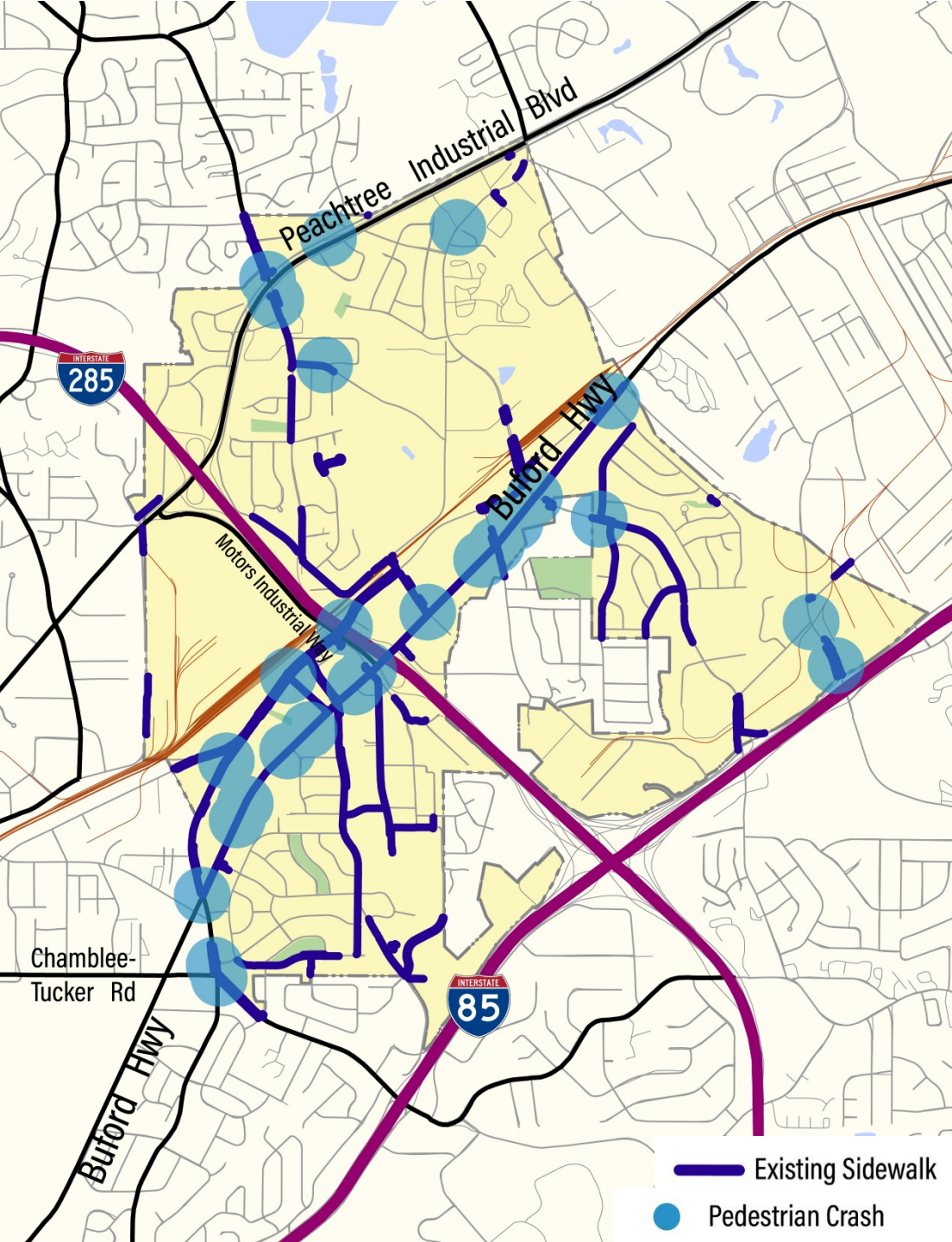


● Pedestrian Crash

Source: GEARS DATA – 2015 - 2019

Crashes – Ped & Sidewalk

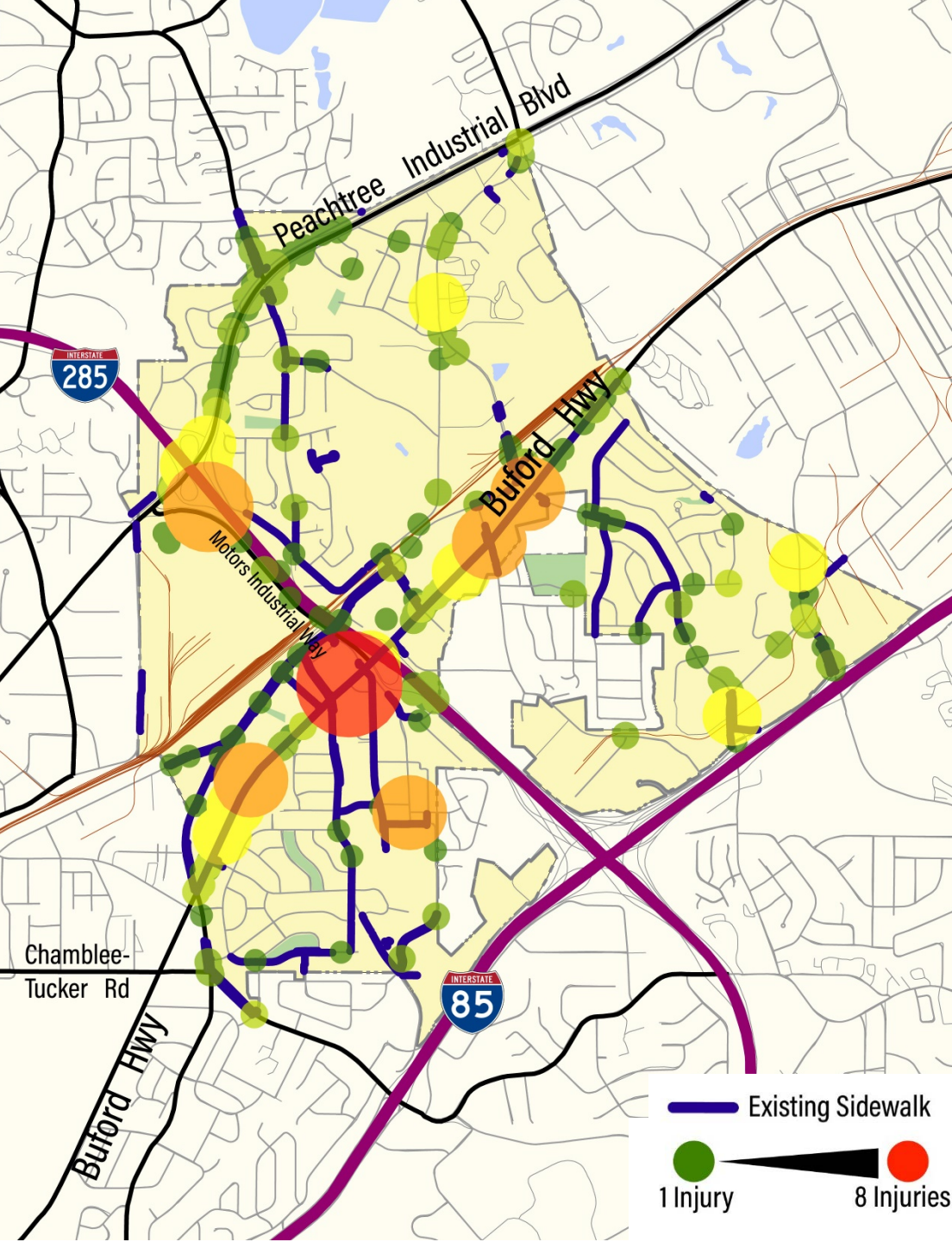
- **Most pedestrian crashes occur either in neighborhoods or on major commercial corridors (concentrated on Buford Highway)**
- ***Survey Results: Participants want to improve safer crossings in Doraville***



Source: GEARS DATA – 2015 - 2019

Crashes – Injuries

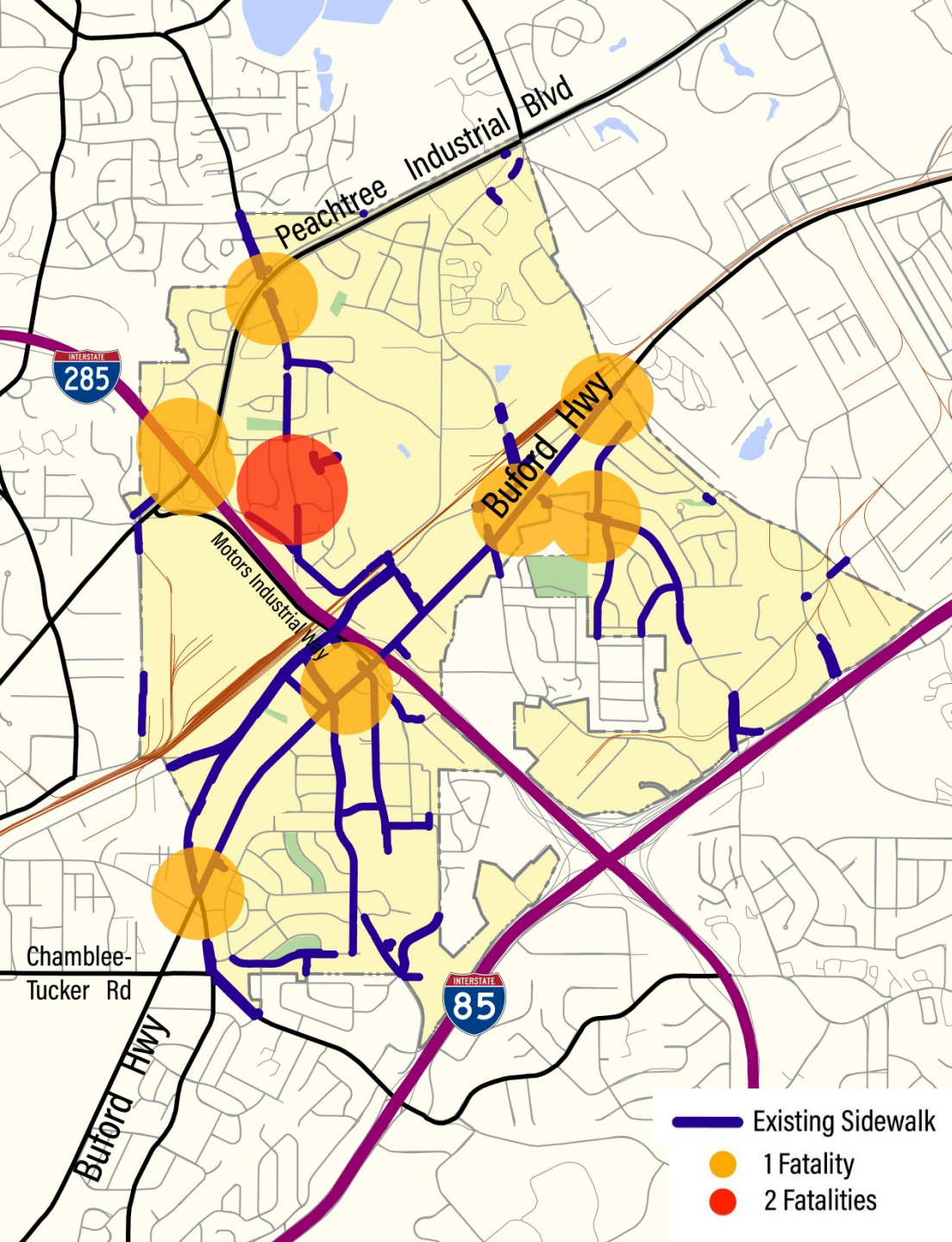
- **Buford Highway and PIB experience crash injuries**
- **Injuries occur at major intersections, particularly at the interstates on Buford Highway**
- **Oakcliff Road experiences injuries**
- ***INJURY Details:***
 - *8-person crash at Buford Highway & Jess Norman Way (two cars with multiple passengers) – Vehicle not in motion*
 - *7-person crash at Buford Highway & Oakcliff Road – Multiple vehicles + bus - Vehicles in motion*
 - *6-person crashes: Most occur on Buford Highway, involve vehicles in motion/failure to yield*
 - *Poplar Street 6-person crash involved a bus*
 - *Multiple crashes with +4 injuries involved buses*



Source: GEARS DATA – 2015 - 2019

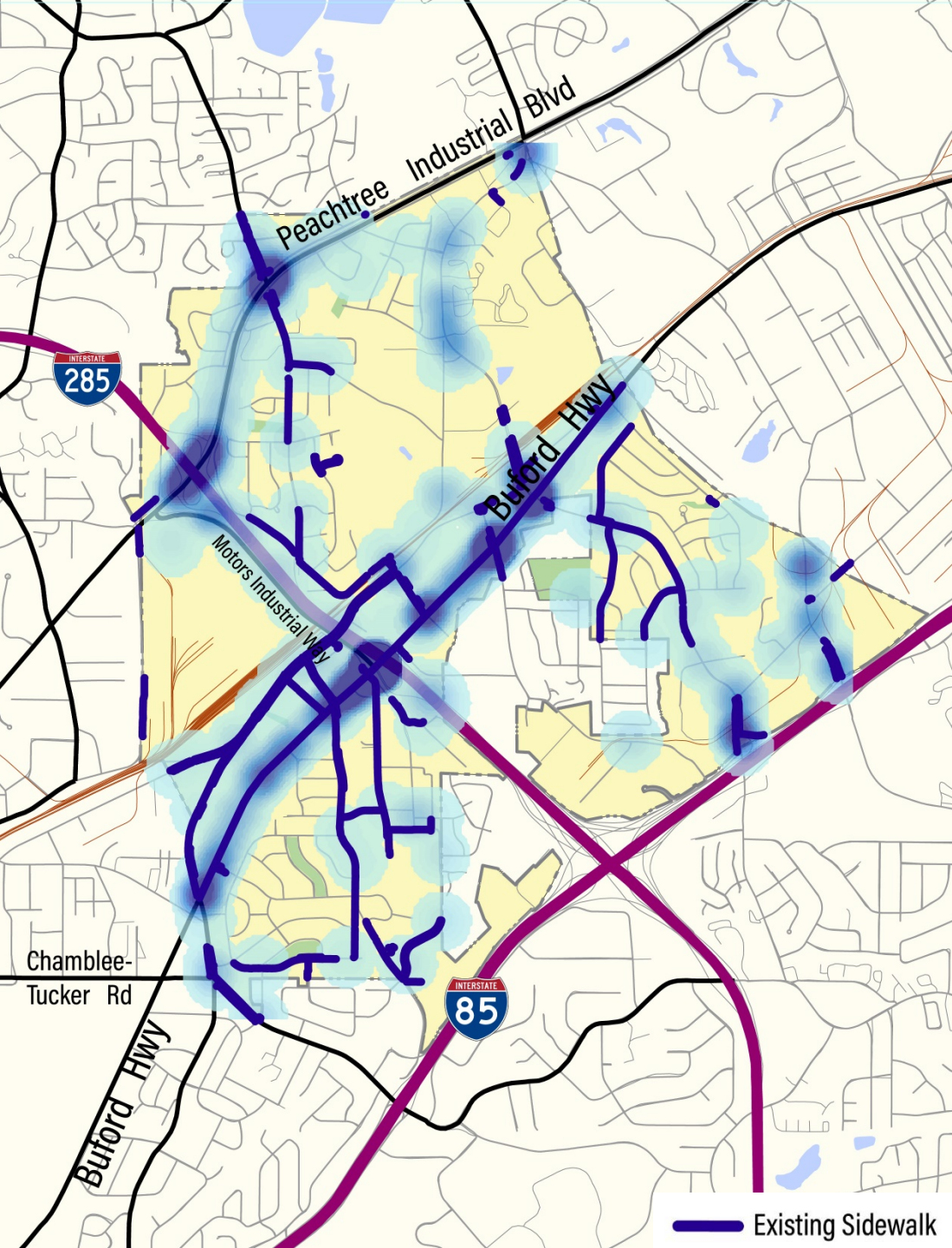
Crashes – Fatalities

- **Fatalities occur along corridors with major attractions**
- **Fatalities take place at major intersections and at roadways with sidewalk gaps**
- ***Fatality Details:***
 - *Most fatal crashes involved two vehicles (mostly turning collisions)*
 - *Buford Highway fatalities involved turning vehicles*
 - *Buford Highway fatality involved pedestrian attempt to cross roadway*
 - *Fatality on Chamblee Tucker Road noted dark conditions*
 - *Northern Tilly Mill Road fatality involved a pedestrian (low visibility)*



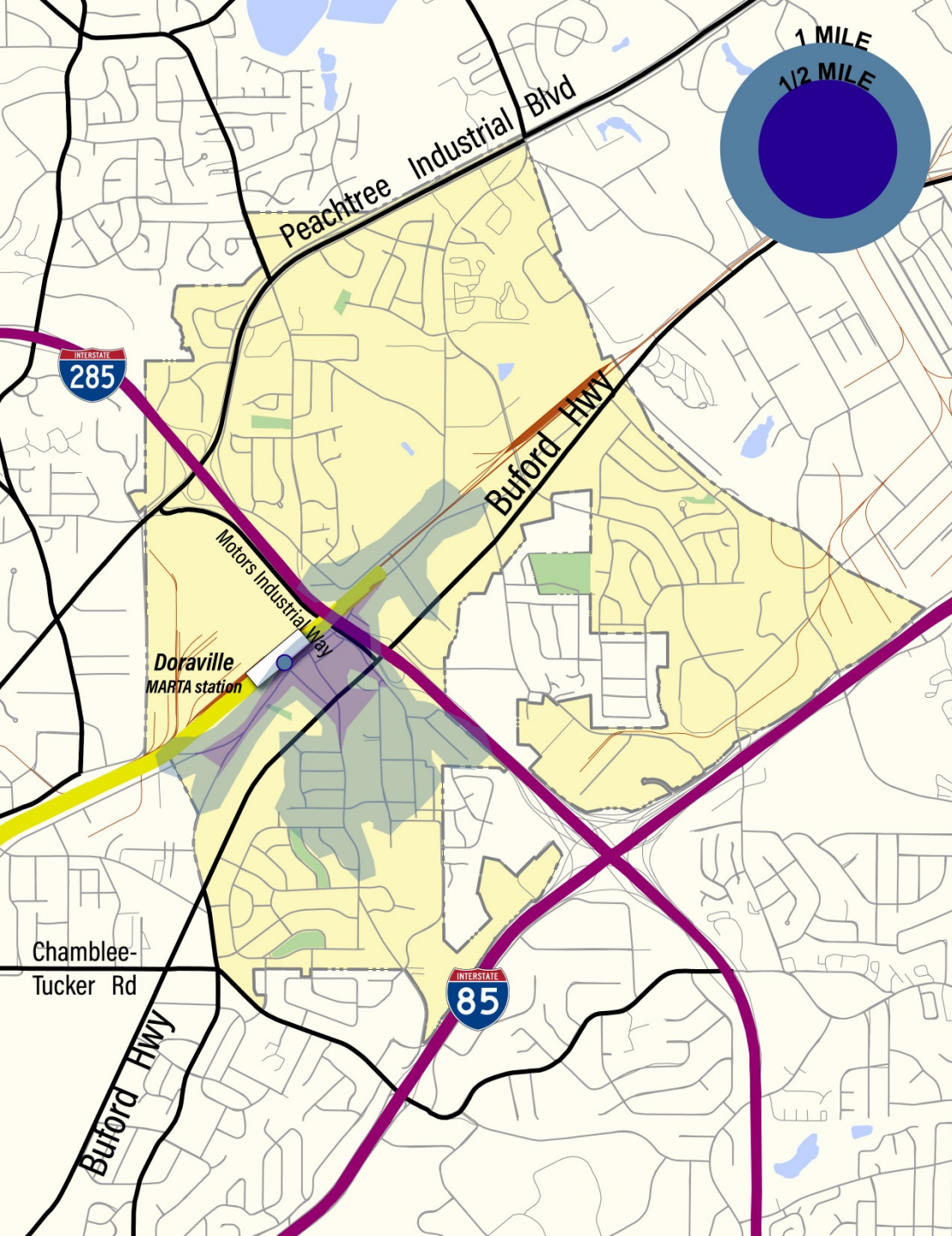
Crashes (Injuries)

- High injury congestion at PIB at Tilly Mill Road, I-285, and Winters Chapel Road
- High injury congestion at Buford Highway and Shallowford Road, Park Avenue, Central Avenue, I-285, Longmire Way, McElroy Road, and Oakcliff Road
- Injury hotspots leaving Norcross to I-85



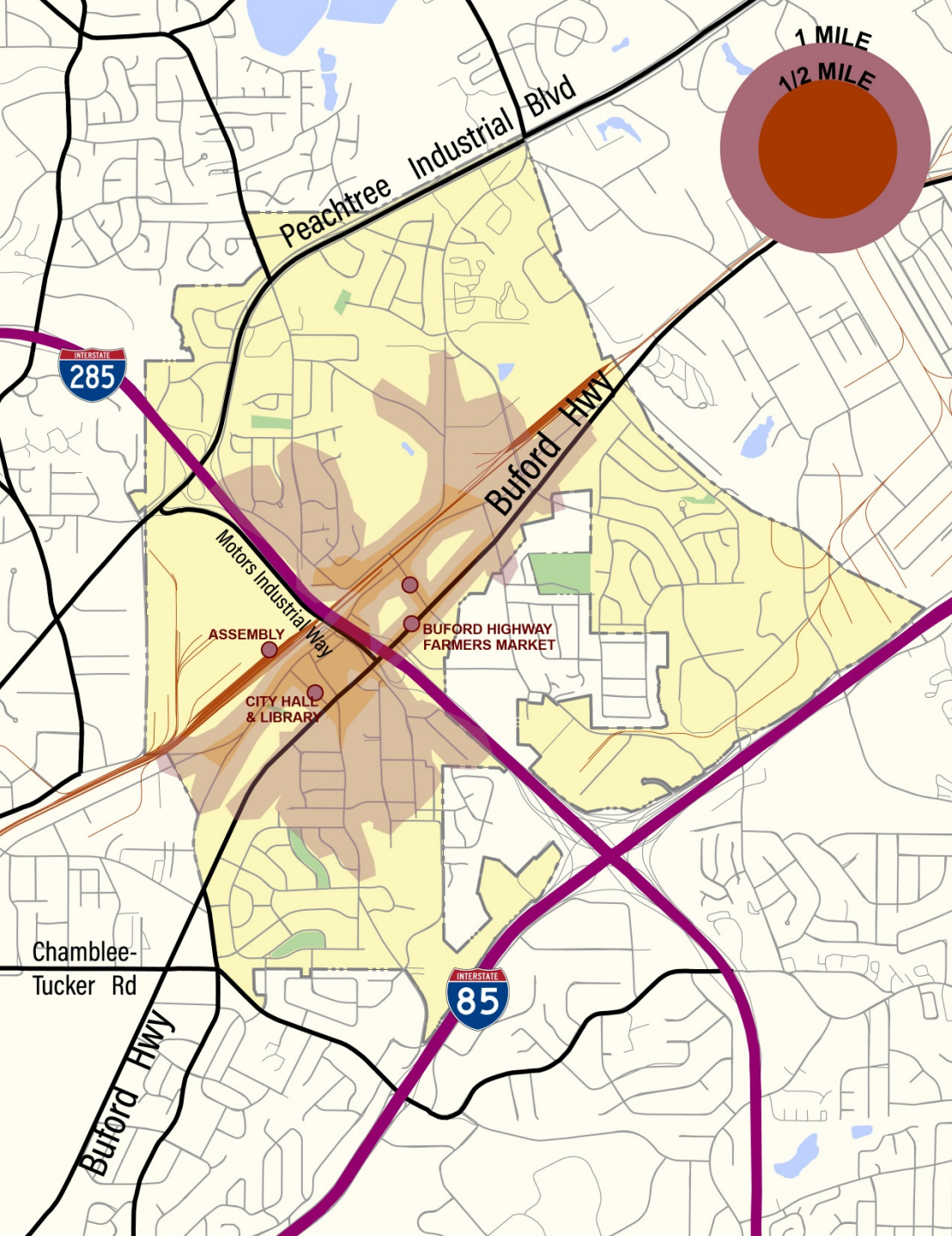
Existing Sidewalk

Source: GEARS DATA - 2015 - 2019



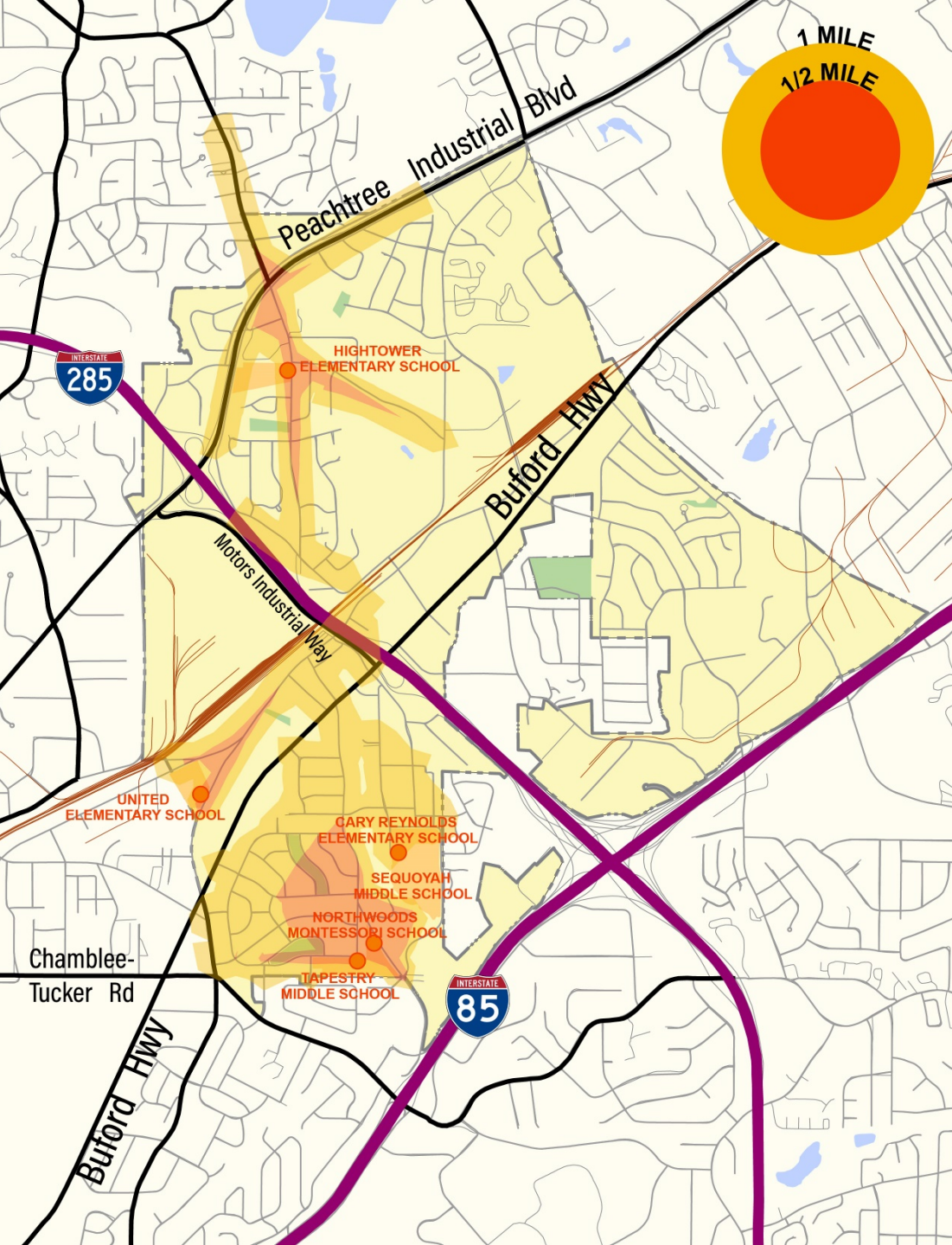
Walksheds ½ & 1 Mile

- **MARTA Station**
 - Pedestrians are limited to west of I-285 and along Buford Highway
 - Limited connection to neighborhoods



Walksheds ½ & 1 Mile

- **Farmers Market/Key Facilities & City Hall**
 - Important commercial hotspots in Doraville (e.g. Farmer's Market, Assembly site, City Hall/Library) and inaccessible to most neighborhoods
 - Walking accessibility is centered around new Peachtree Road and Buford Highway

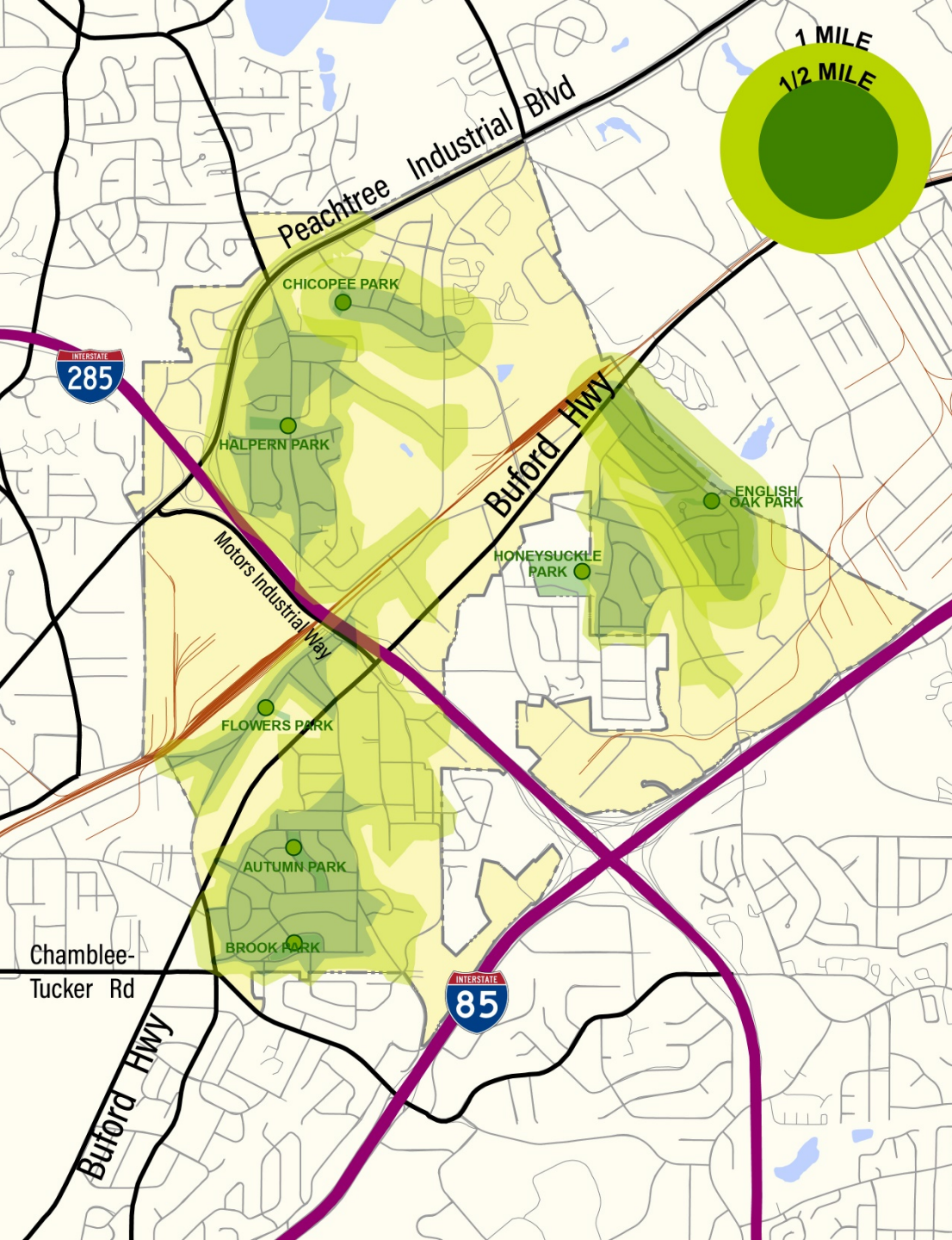


Walksheds ½ & 1 Mile

- **Schools**

- Public schools do not have safe crossings east of I-285 and along Buford Highway
- Schools are inaccessible, especially with high traffic roadways as barriers

Walksheds ½ & 1 Mile



- ## Parks

- *Along the street network*
- **Most parks are only accessible to the neighborhood they are located in**
- **Chicopee Park has limited accessibility**



Doraville Citywide Mobility Plan

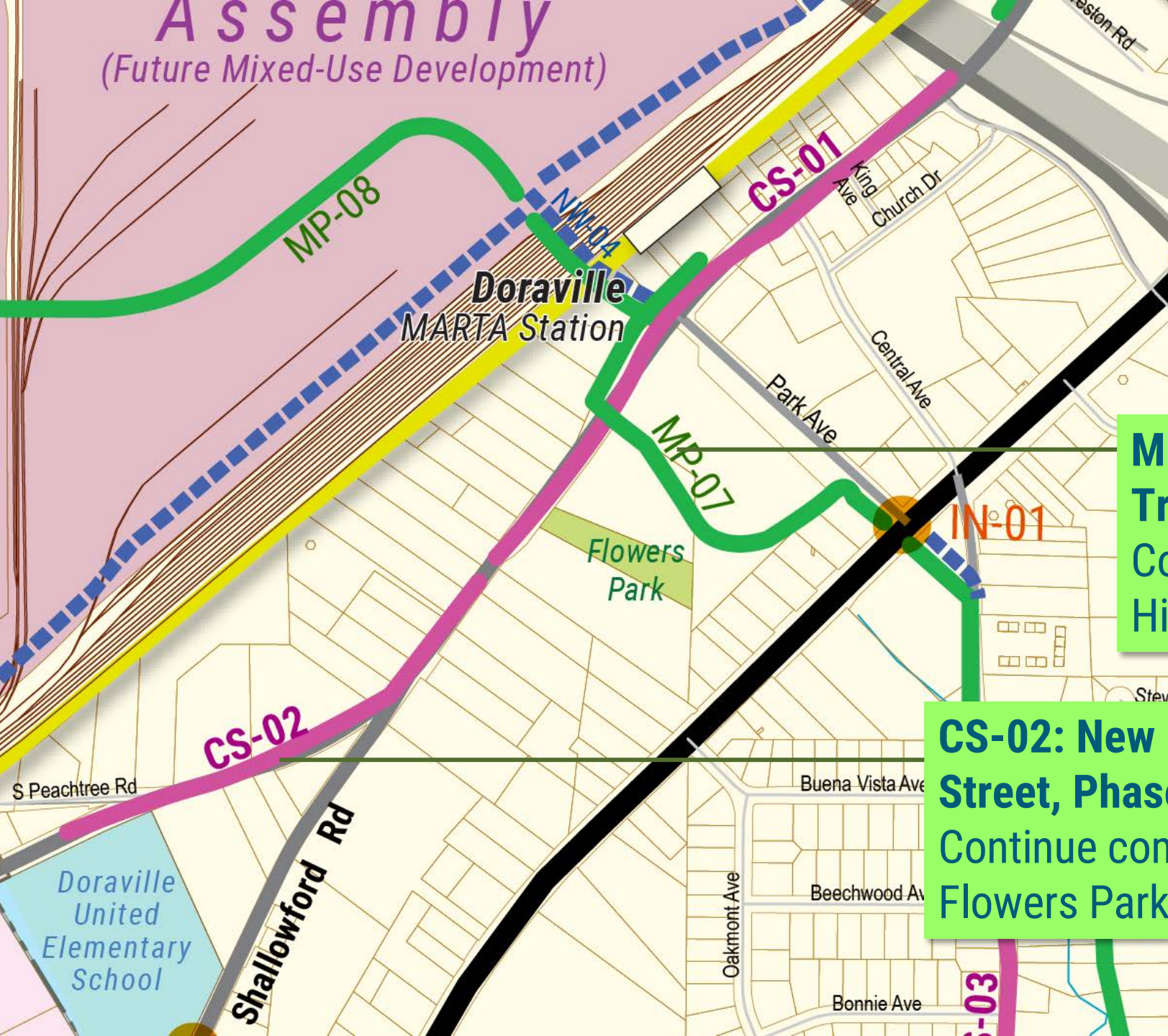
DRAFT PROJECT LIST



November 19, 2020

Major Themes for Projects

- Improvements around MARTA and Downtown Doraville
- Crossing Barriers
- Safety on Major Streets
- Connecting Northwoods While Protecting the Neighborhood Character
- Connecting the Tilly Mill neighborhoods
- New Street Connections
- Neighborhood Sidewalk Infill



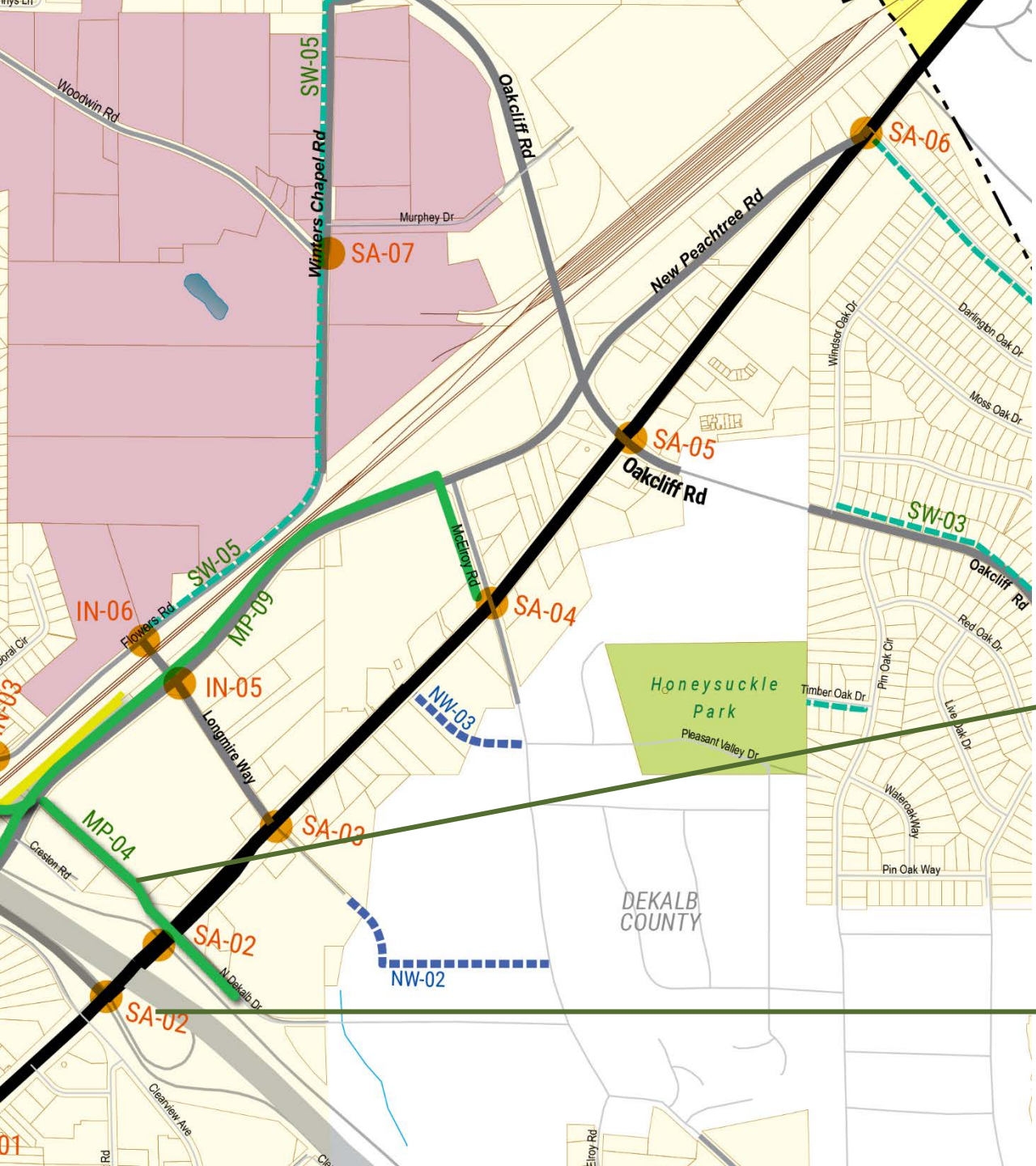
Improvements Around MARTA

MP-07: Park Avenue Connector Trail

Connect from Chestnut/Buford Highway to MARTA station

CS-02: New Peachtree Complete Street, Phase 2

Continue complete street from Flowers Park



Crossing Barriers

MP-04: Pedestrian Bridge over Buford Highway

A bold concept that could add a notable gateway feature to the city

SA-02: Buford Hwy/I-285 Improvements

Make critical repairs for these crossings

SA-02: Buford Highway Pedestrian Improvements

**Current
conditions**



SA-02: Buford Highway Pedestrian Improvements

**Current
conditions**



SA-02: Buford Highway Pedestrian Improvements

**Restripe
crosswalks;
add raised
refuge islands;
improve
sidewalk
transitions
from Buford
Highway to
crosswalks**



SA-02: Buford Highway Pedestrian Improvements

**Current
conditions**

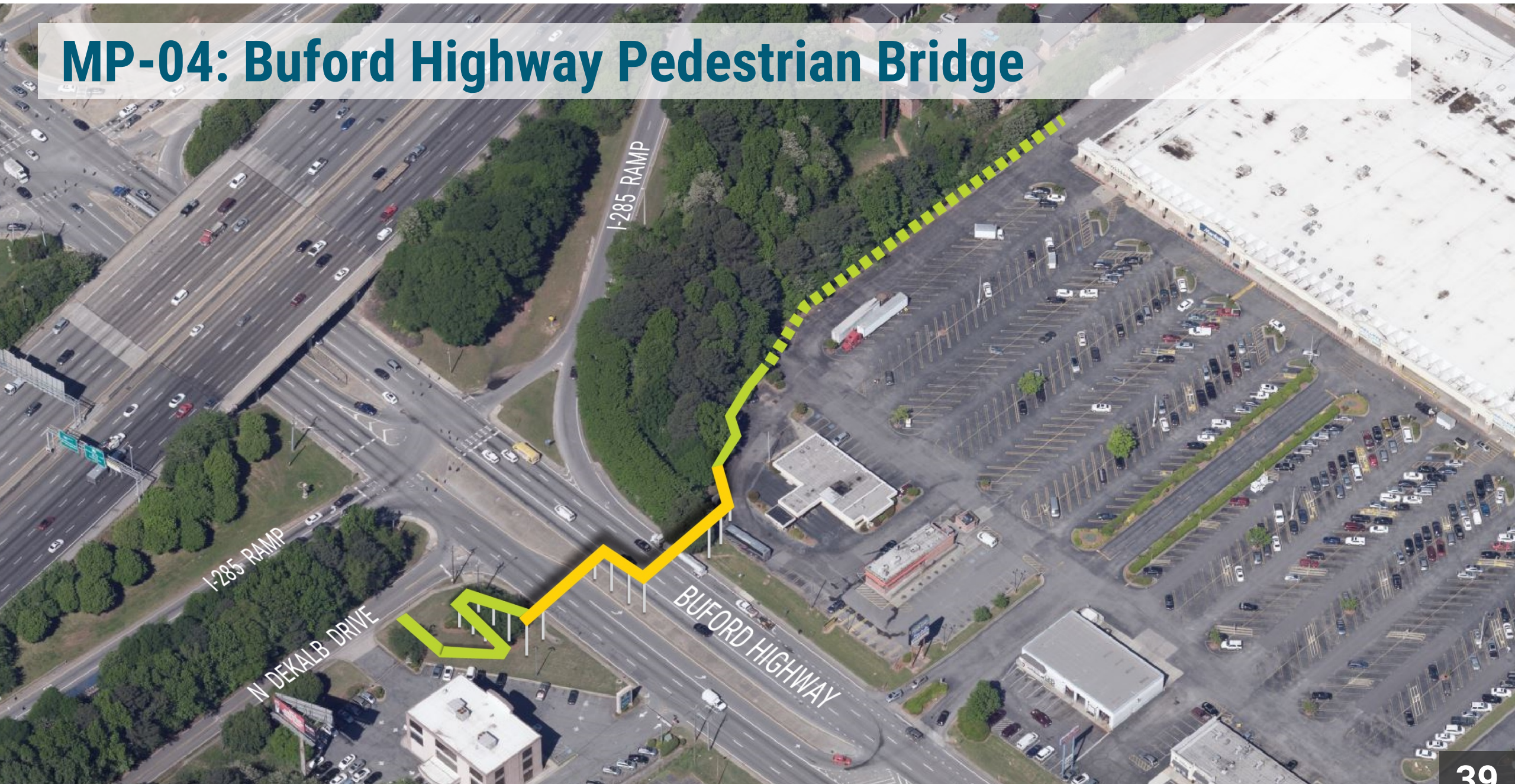


SA-02: Buford Highway Pedestrian Improvements

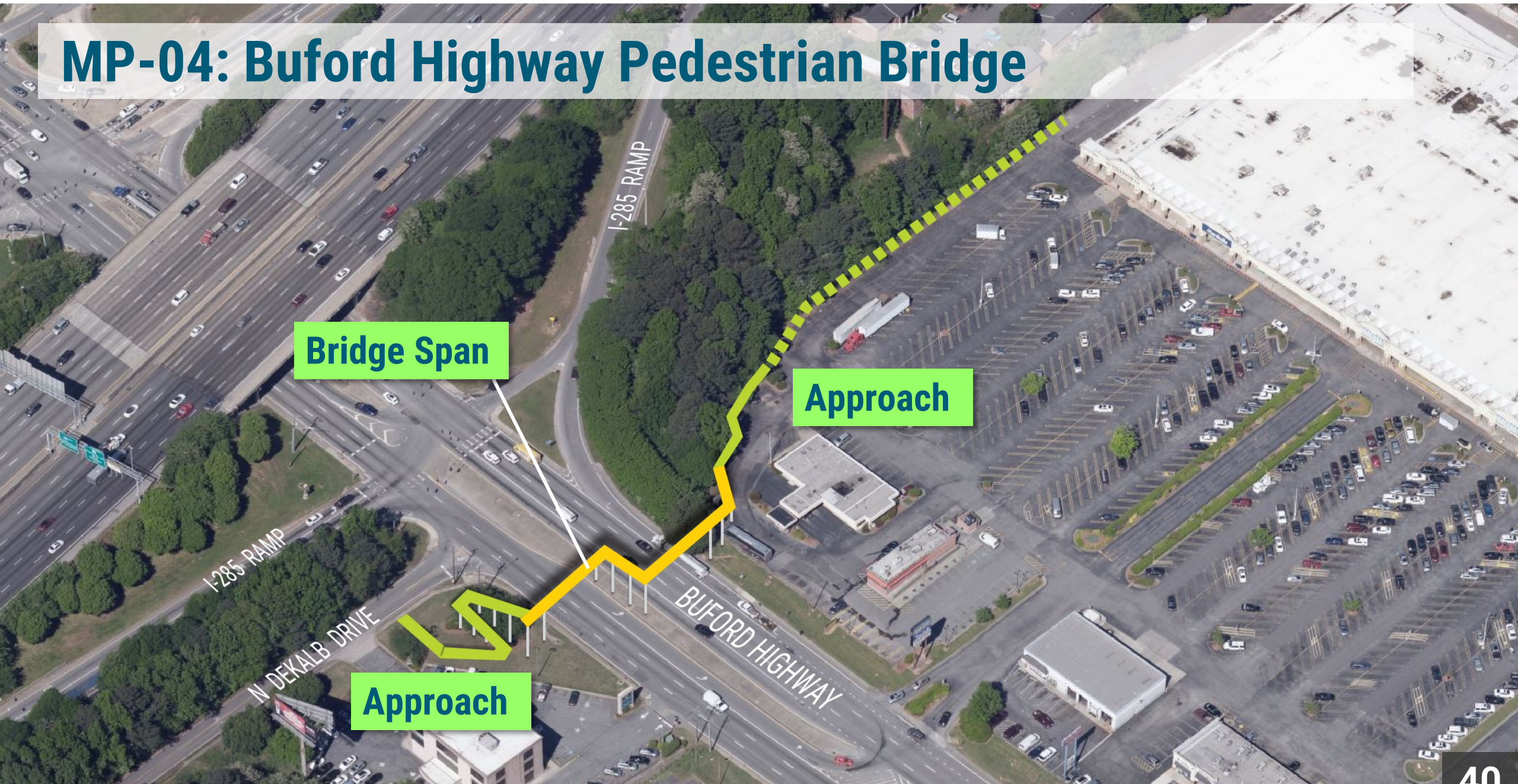
**Restripe
crosswalks,
improve
pedestrian
refuge in
raised islands;
restore
sidewalk
height above
roadway**



MP-04: Buford Highway Pedestrian Bridge



MP-04: Buford Highway Pedestrian Bridge



Northwoods

MP-01: Peachtree Creek Connector Trail
Trail from the Peachtree Creek Greenway corridor (south of I-85)

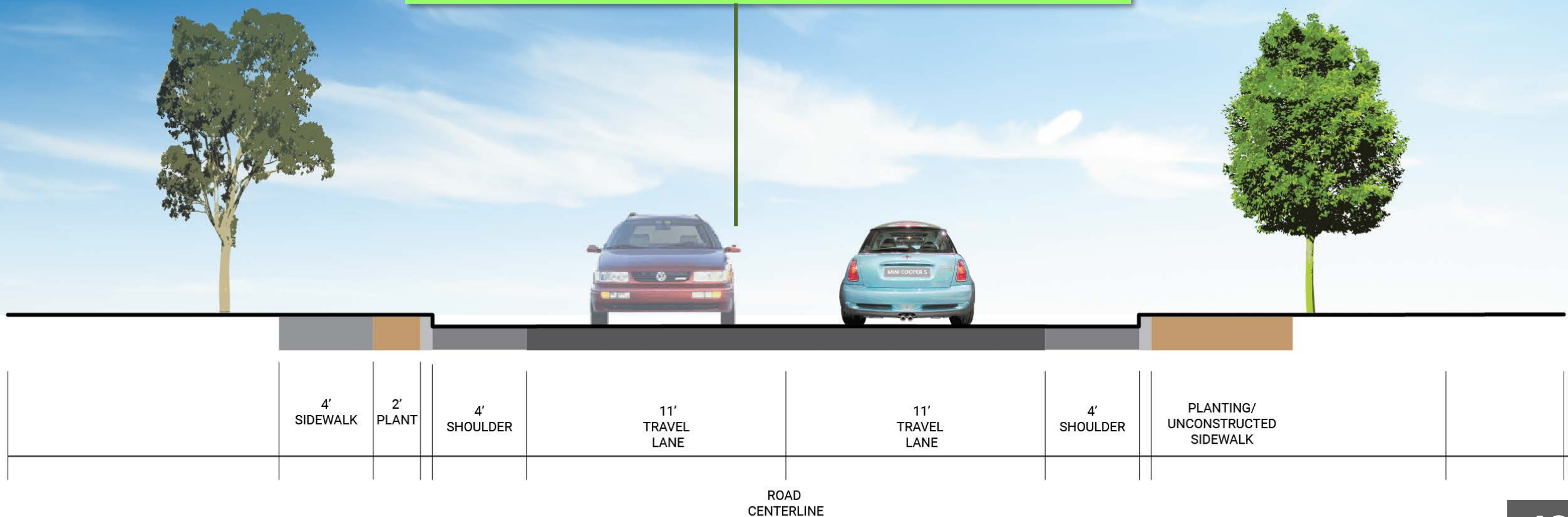
CS-03: Chestnut Drive Complete Street
Develop a multi-modal Chestnut Drive, including protected bicycle facilities and traffic calming

MP-10: Branch Connector Trail
Trail from the Peachtree Creek Greenway Connector to Chestnut Drive

CS-03: Chestnut Drive Complete Street

Current Conditions:

Travel lanes and shoulders, and only one sidewalk

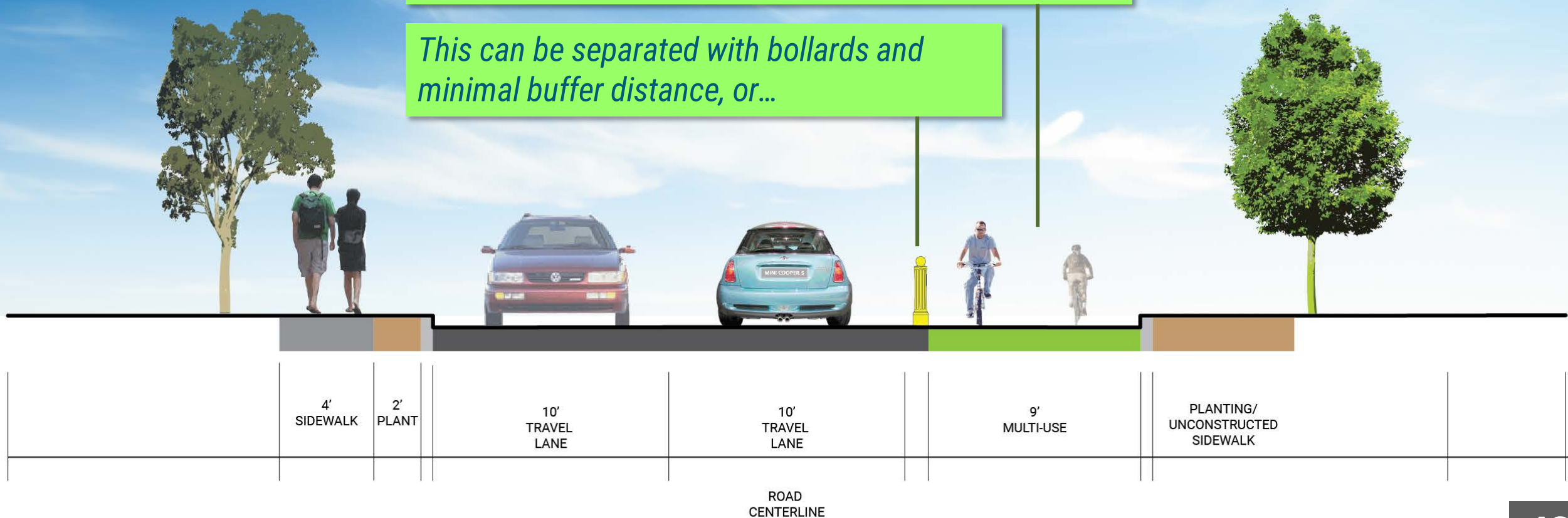


CS-03: Chestnut Drive Complete Street

Complete Street Concept:

Reduce lane widths and add a multi-use path or cycle track – no changes to curbs needed

This can be separated with bollards and minimal buffer distance, or...

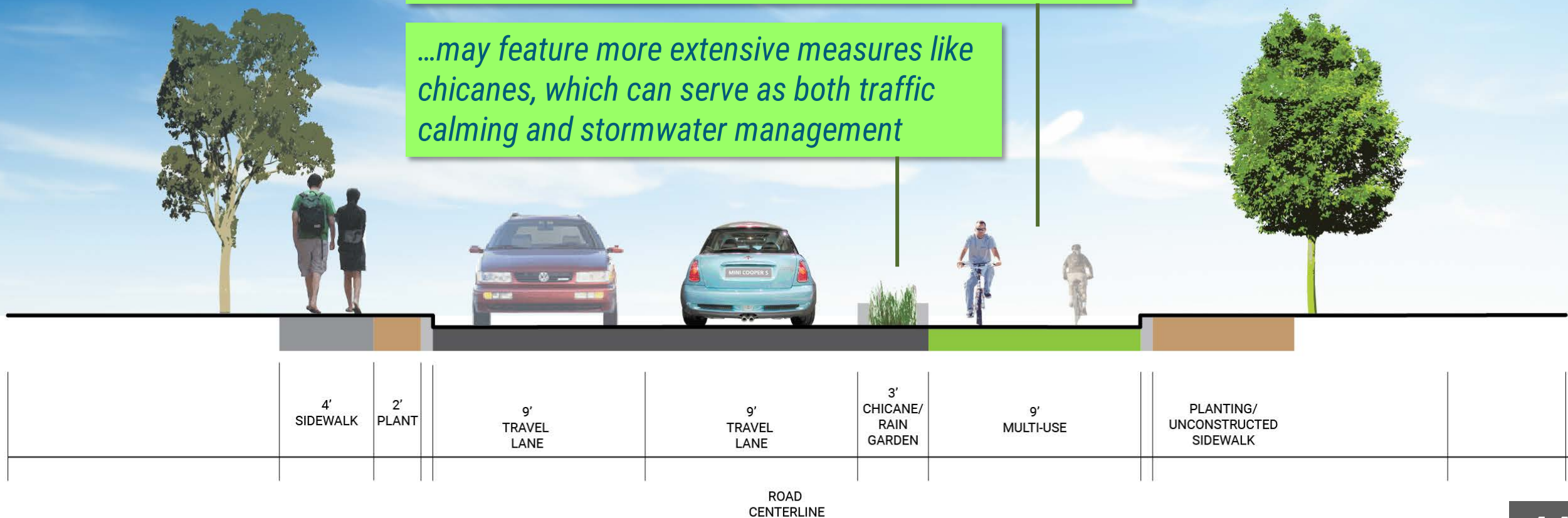


CS-03: Chestnut Drive Complete Street

Complete Street Concept:

Reduce lane widths and add a multi-use path or cycle track – no changes to curbs needed

...may feature more extensive measures like chicanes, which can serve as both traffic calming and stormwater management



Tilly Mill Neighborhoods

MP-03: Chicopee Park Connector Trail

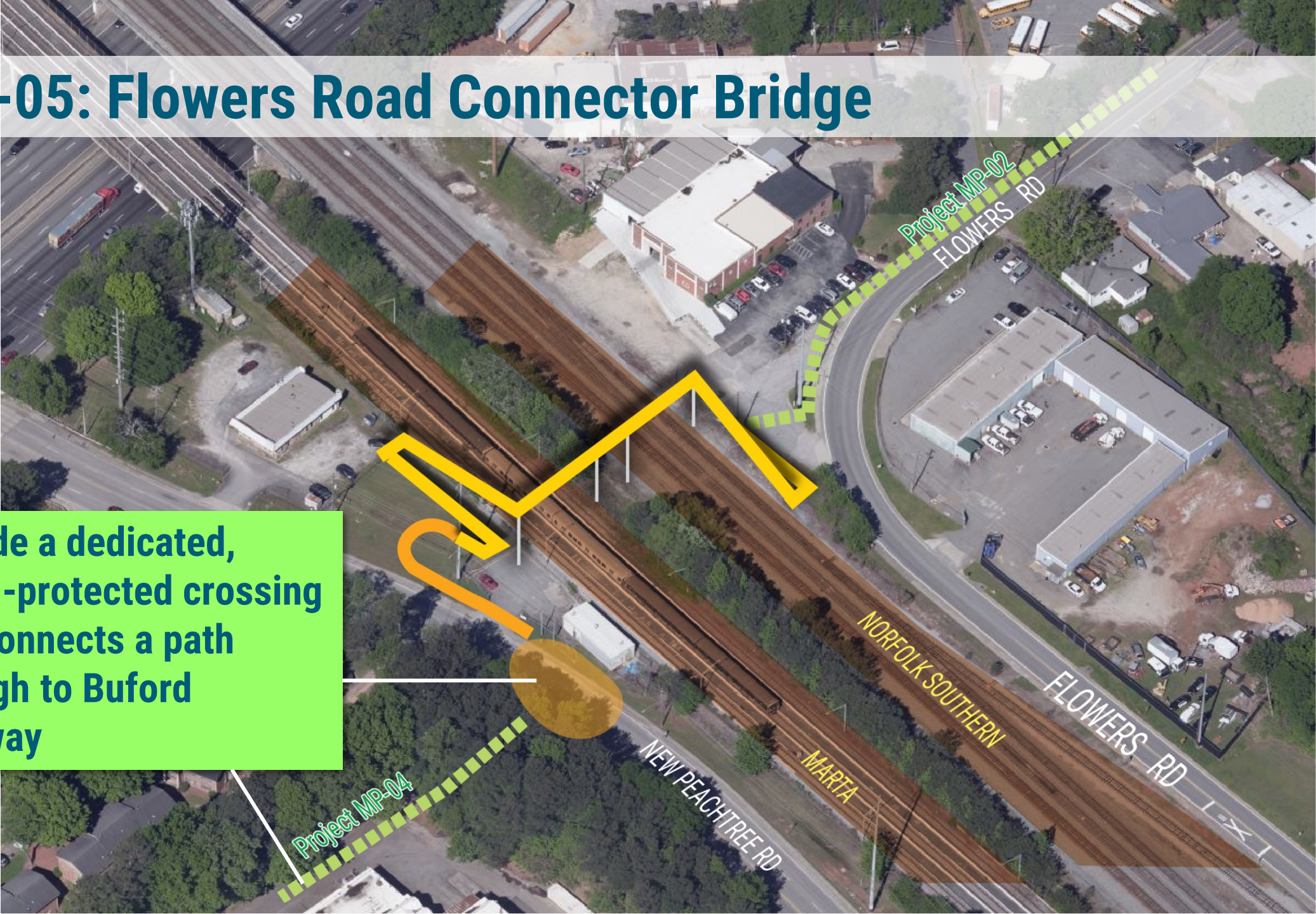
Connector trail from park to Tilly Mill, around Home Depot site. Overcoming grade change will be significant, but provides a critical connection.

SA-13: Tilly Mill-Hightower Protected Crossings

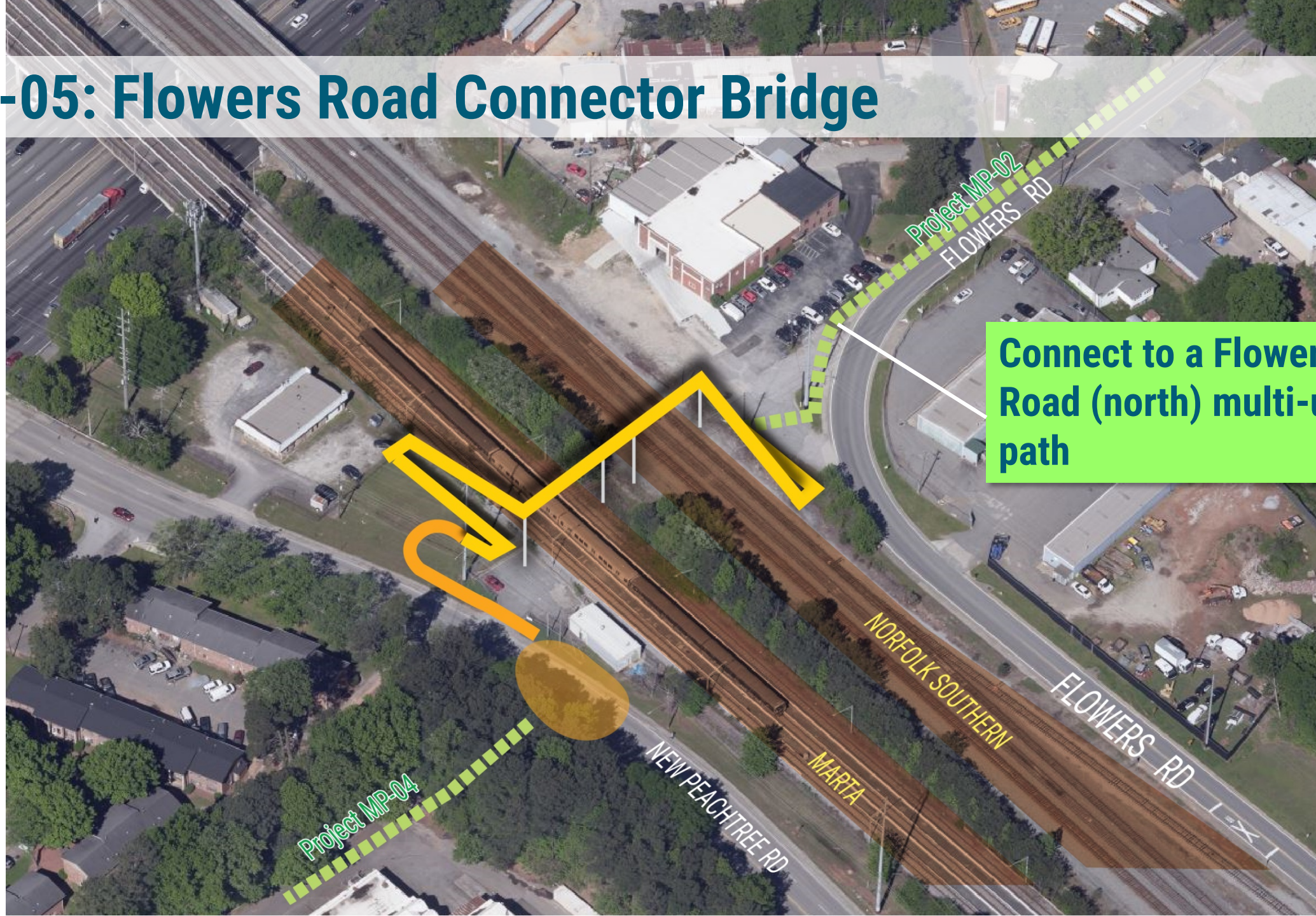
Signal Protected Crossings at Woodwin and at Chicopee Trail end (MP-03)

MP-05: Flowers Road Connector Bridge

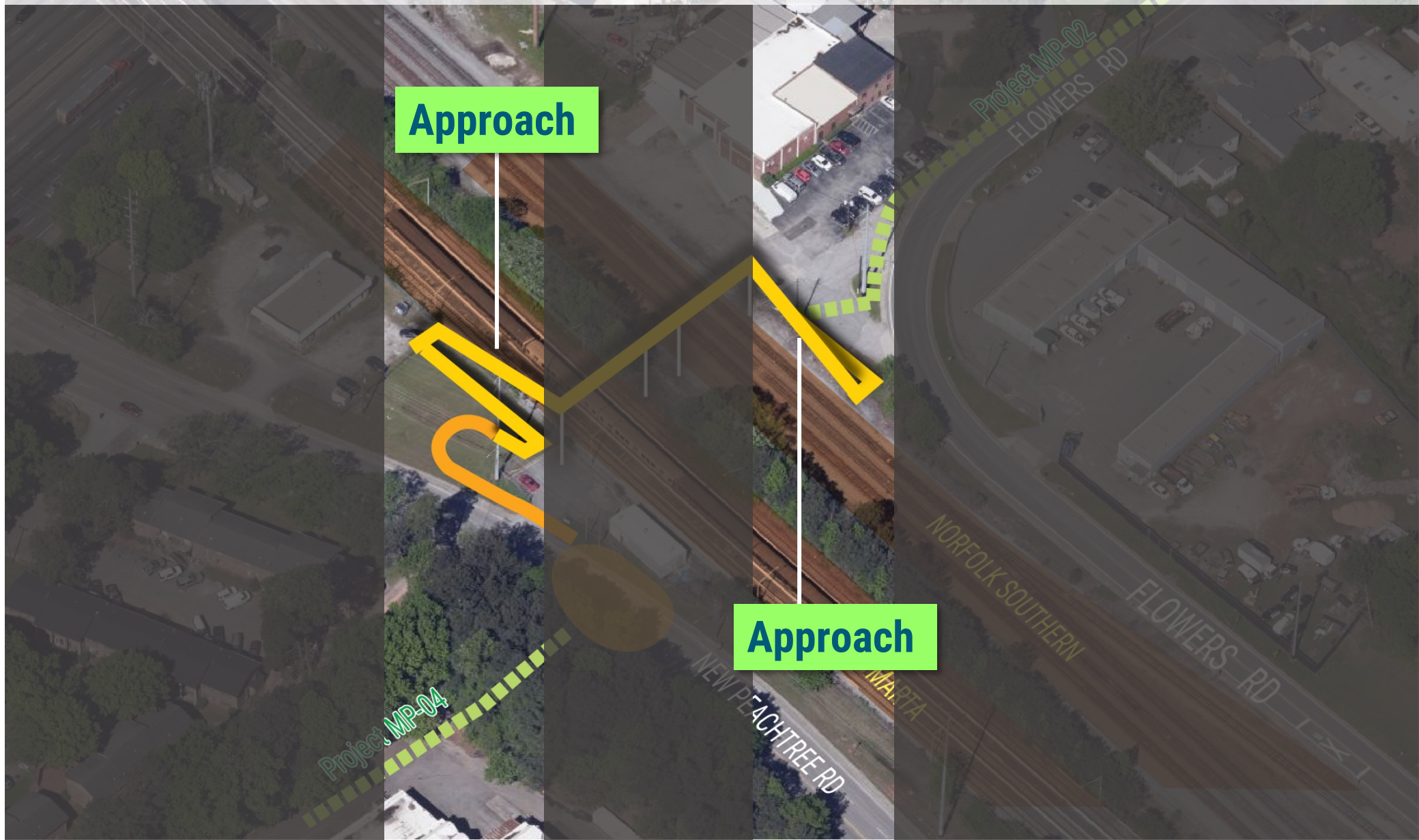
Provide a dedicated, signal-protected crossing that connects a path through to Buford Highway



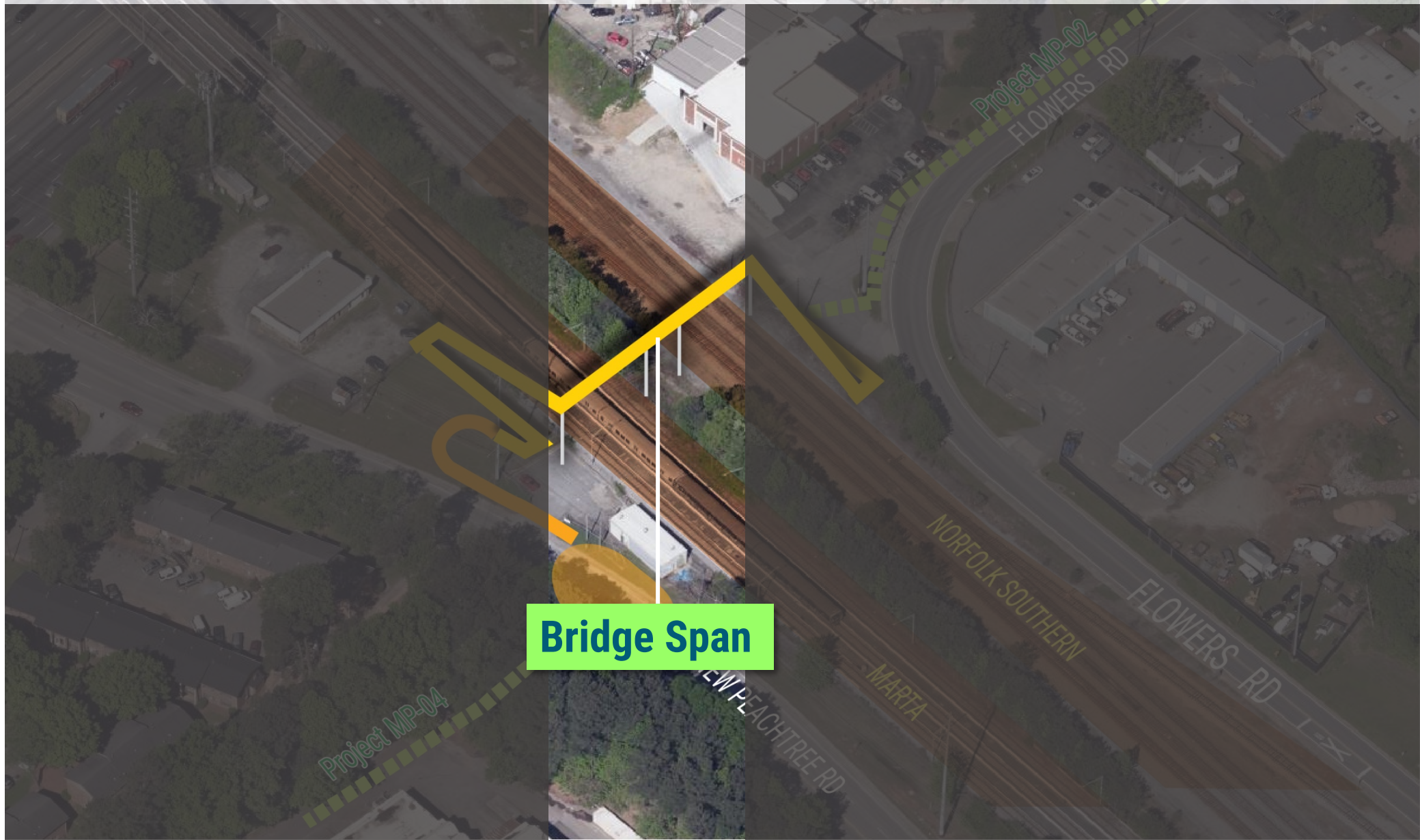
MP-05: Flowers Road Connector Bridge



MP-05: Flowers Road Connector Bridge



MP-05: Flowers Road Connector Bridge



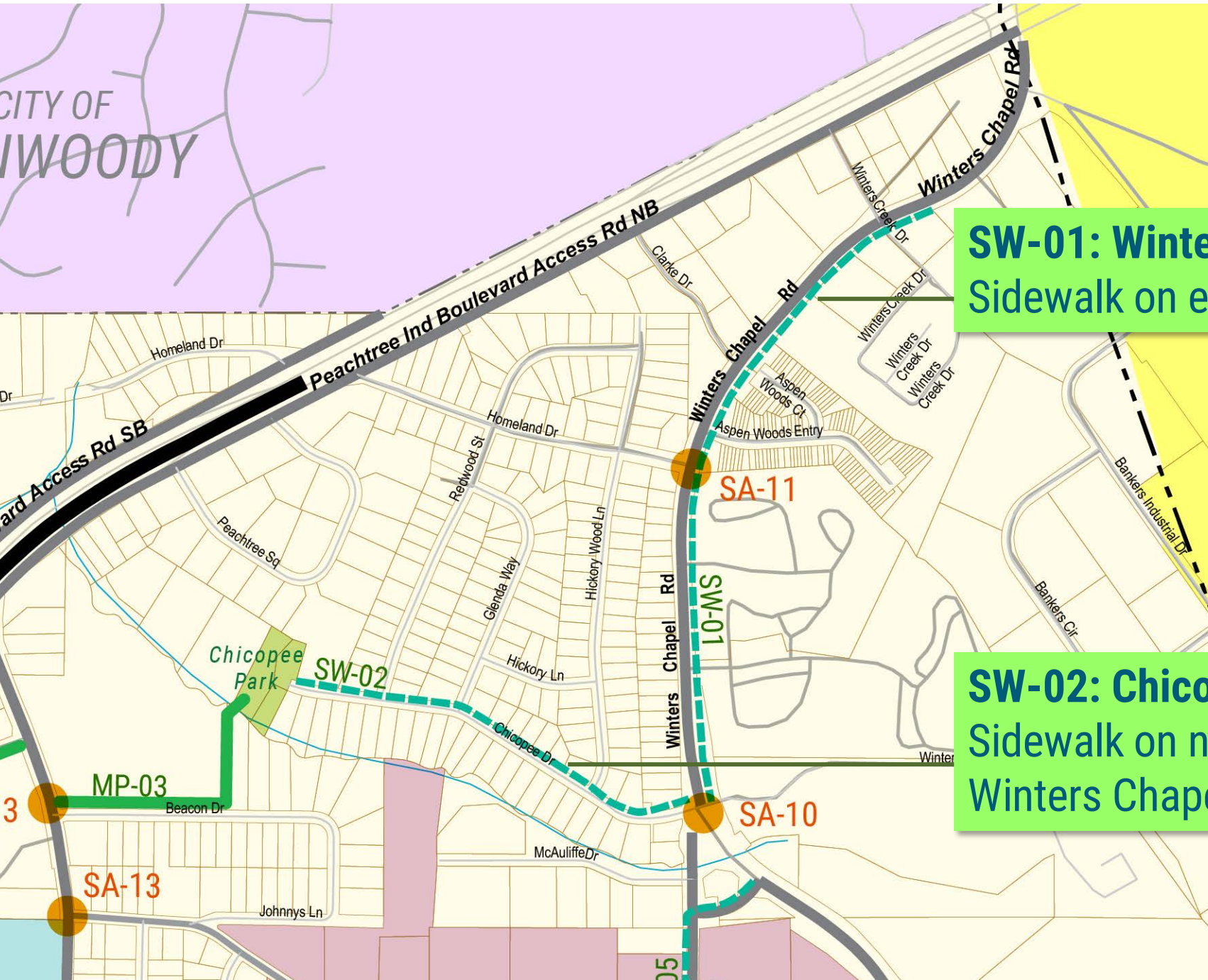
Sidewalks

SW-01: Winters Chapel

Sidewalk on east side of the street

SW-02: Chicopee Drive

Sidewalk on north side of the street –
Winters Chapel to Chicopee Park



Sidewalks

SW-06: English Oak

Sidewalk on south/west side of street, where currently constructed at the park

SW-07: Pin Oak

Continue north-side sidewalk east from Oakcliff to English Oak

SW-03: Oakcliff

Construct sidewalk on east side from Windsor Oak to Northcrest, and on both sides near Oakcliff Industrial St



Doraville Citywide Mobility Plan

INTERACTIVE OPEN HOUSE



November 19, 2020

Mural – Interactive Open House Format

- **Work Session 1: 45 Minutes**
 - “Open House” style interactive activities
 - Activities include:
 - Project candidate map
 - Project category comments & information
 - Public survey results
 - Key themes maps/graphics
 - City Staff & Stantec to moderate/be present for questions
- **Work Session 2: 30-35 Minutes**
 - Regroup & discuss feedback/themes
 - Collect feedback on how project candidates address mobility challenges

Mural – Instructions

<https://bit.ly/PublicMeetingMural>

Text

Drag and drop sticky notes, titles or text boxes to write down your ideas.

T

≡

💬

3x3 STICKY NOTE

5x3 STICKY NOTE

CIRCLE STICKY NOTE

Doraville Citywide Mobility Plan - Public M...

Facilitator

SHARE

15%

Zoom

Doraville Citywide Mobility Plan - Public Meeting Mural Session

Work Session 1

Preliminary Project Candidates

Project Candidate Comments

Doraville Citywide Mobility Plan

DRAFT Map of Project Candidates - November 16, 2020

YOUR COMMENT HERE

Current Street Network

Railroads and Rail Transit

Major Project Types

Major Project Types

New Street Network (NW projects)

Project Number

Project Name

Your Comment

CS-01

New Peachtree Complete Street, Phase 1

CS-02

New Peachtree Complete Street, Phase 2

CS-03

Complete Street and Traffic Calming for Chestnut Drive

IN-01

Realignment of Chestnut at Buford Highway

IN-02

Chamblee-Tucker/Shallowford Intersection Realignment

IN-06

Longmire/Flowers Intersection Improvements

IN-04

Brook Park Intersection Reduction

IN-05

Longmire/New Peachtree Intersection Improvements

IN-07

Chestnut Intersection Traffic Calming Projects

MP-01

Peachtree Creek Greenway Connector

MP-02

Flowers Road Multi-Use Path

MP-04

Buford Highway Pedestrian Bridge

MP-05

Bicycle-Pedestrian Railroad Bridge

MP-07

City Center Connector Trail

MP-08

Assembly Trails Connection to Chamblee

MP-09

New Peachtree Road Multi-Use Path

MP-10

Peachtree Creek Greenway Connector - South Spur

NW-01

New Street - McClave to Shallowford

NW-02

New Street - Longmire to Ashlyn Pointe Connection

NW-03

New Street - Pleasant Valley Extension

NW-04

Park Avenue Extension and Covered Street

SA-01

Shallowford Road Mid-Block Crossings

SA-02

Buford Highway Pedestrian Improvements at I-285

SA-03

Buford Highway/Longmire Pedestrian Improvements

SA-04

Buford Highway/McElroy Pedestrian Improvements

SA-05

Buford Highway/Oakcliff Pedestrian Improvements

SA-06

Oakcliff Road Mid-Block Crossings

SA-10

Winters Chapel/Chicopee Pedestrian Improvements

SA-11

Winters Chapel/Homeland Pedestrian Improvements

SA-12

Tilly Mill-Gentilly Protected Crossing

SA-13

Tilly Mill Mid-Block Crossings

SW-01

Winters Chapel Sidewalk - Chicopee to Winters Creek

SW-02

Chicopee Road Sidewalk

SW-03

Oakcliff Road Sidewalk Enhancement

SW-05

Winters Chapel Sidewalk - Longmire to Oakcliff

Mural – Instructions

<https://bit.ly/PublicMeetingMural>

←

📄

🗨️

★

🗃️

🖼️

📖

📌

✍️

Text

✕

Drag and drop sticky notes, titles or text boxes to write down your ideas.

T

☰

💬

3x3 STICKY NOTE

5x3 STICKY NOTE

CIRCLE STICKY NOTE

Doraville Citywide Mobility Plan - Public M...

🔄

📄

🗨️

🕒

👤 Facilitator

👤 1

📤 SHARE

📄

🗨️

📋

🔍

?

All changes saved

Doraville Citywide Mobility Plan - Public Meeting Mural Session

Work Session 1

Preliminary Project Candidates

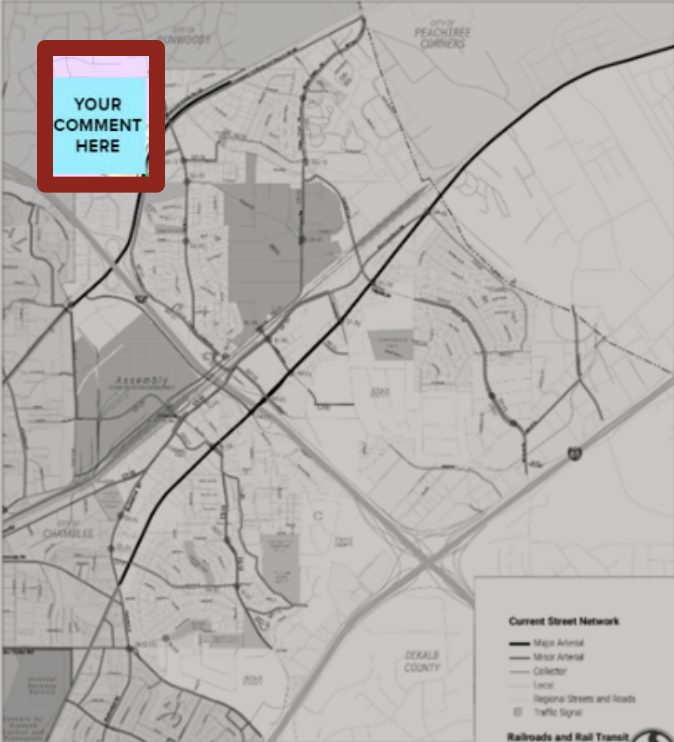
Comment on the preliminary proposed project candidates by adding sticky notes on the map below (copy and paste the sticky notes to the right).

3x3 STICKY NOTE

5x3 STICKY NOTE

CIRCLE STICKY NOTE

YOUR COMMENT HERE



Current Street Network

- Major Arterial
- Minor Arterial
- Collector
- Local
- Regional Streets and Roads
- Traffic Signal

Railroads and Rail Transit

- Metrolia Light Rail and Bus
- CSX Transportation
- Norfolk Southern Corporation

Major Project Types

- Multi-Use Path (Trail, BIKI, etc.)
- New Street Network (NW projects)

Project Candidate Comments

Please place a thumbsup or a thumbsdown in each project box. Add a sticky note or text box beside your check or x mark if you would like to provide more information on your choice.

3x3 STICKY NOTE

5x3 STICKY NOTE

CIRCLE STICKY NOTE

Project Number	Project Name	Your Comment
CS-01	New Peachtree Complete Street, Phase 1	
CS-02	New Peachtree Complete Street, Phase 2	
CS-03	Complete Street and Traffic Calming for Chestnut Drive	
IN-01	Realignment of Chestnut at Buford Highway	
IN-02	Chamblee-Tucker/Shallowford Intersection Realignment	
IN-06	Longmire/Flowers Intersection Improvements	
IN-04	Brook Park Intersection Reduction	
IN-05	Longmire/New Peachtree Intersection Improvements	
IN-07	Chestnut Intersection Traffic Calming Projects	
MP-01	Peachtree Creek Greenway Connector	
MP-02	Flowers Road Multi-Use Path	
MP-04	Buford Highway Pedestrian Bridge	
MP-05	Bicycle-Pedestrian Railroad Bridge	
MP-07	City Center Connector Trail	
MP-08	Assembly Trails Connection to Chamblee	
MP-09	New Peachtree Road Multi-Use Path	
MP-10	Peachtree Creek Greenway Connector - South Spur	
NW-01	New Street - McClave to Shallowford	
NW-02	New Street - Longmire to Ashlyn Pointe Connection	
NW-03	New Street - Pleasant Valley Extension	
NW-04	Park Avenue Extension and Covered Street	
SA-01	Shallowford Road Mid-Block Crossings	
SA-02	Buford Highway Pedestrian Improvements at I-285	
SA-03	Buford Highway/Longmire Pedestrian Improvements	
SA-04	Buford Highway/McElroy Pedestrian Improvements	
SA-05	Buford Highway/Oakcliff Pedestrian Improvements	
SA-06	Oakcliff Road Mid-Block Crossings	
SA-10	Winters Chapel/Chicopee Pedestrian Improvements	
SA-11	Winters Chapel/Homeland Pedestrian Improvements	
SA-12	Tilly Mill-Gentilly Protected Crossing	
SA-13	Tilly Mill Mid-Block Crossings	
SW-01	Winters Chapel Sidewalk - Chicopee to Winters Creek	
SW-02	Chicopee Road Sidewalk	
SW-03	Oakcliff Road Sidewalk Enhancement	
SW-05	Winters Chapel Sidewalk - Longmire to Oakcliff	

55



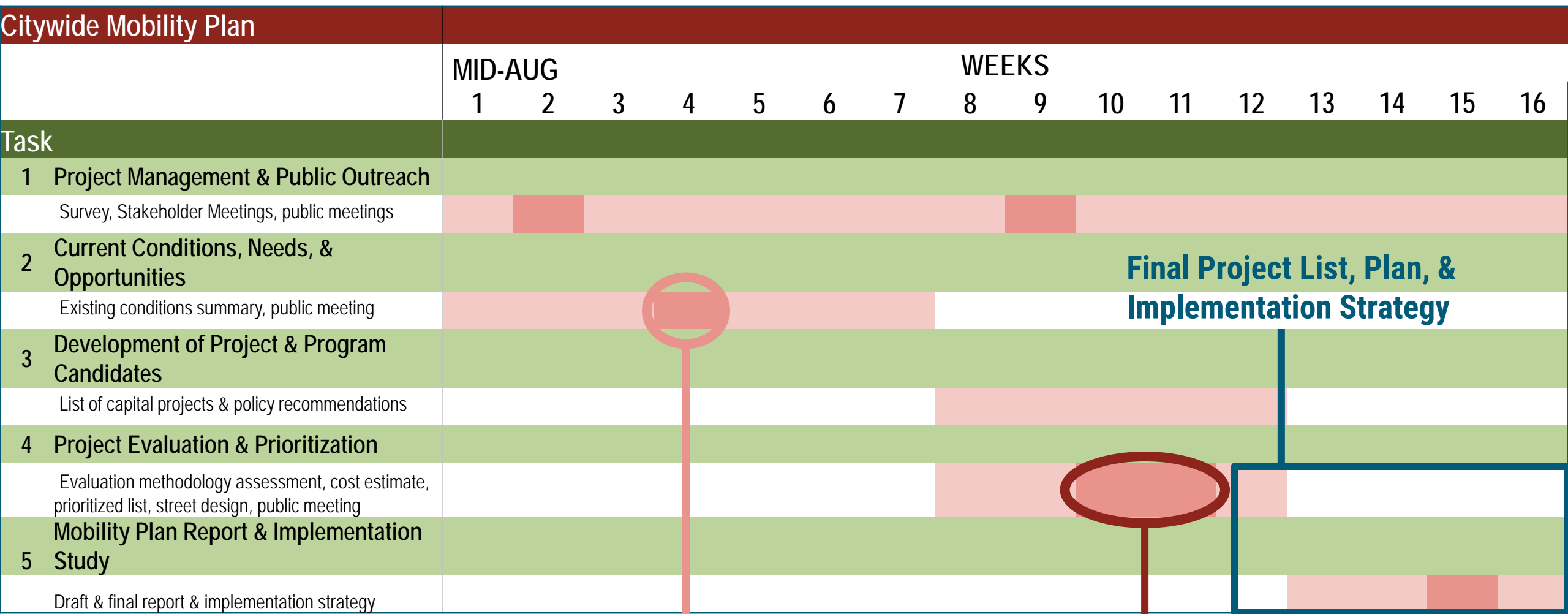
Doraville Citywide Mobility Plan

NEXT STEPS



November 19, 2020

Project Schedule & Public Outreach Efforts



Final Project List, Plan, & Implementation Strategy

Virtual Public Meeting – Sept 10 from 6:00PM – 8:00PM

Virtual Public Meeting Project Evaluation and Feedback– 11/19

Project Links

Webpage	Link
Mural (live until 11/30)	<u>https://bit.ly/PublicMeetingMural</u>
Project Website	<u>https://bit.ly/DMPwebsite</u>

PROJECT WEBSITE





Doraville Citywide Mobility Plan

THANK YOU!



November 19, 2020