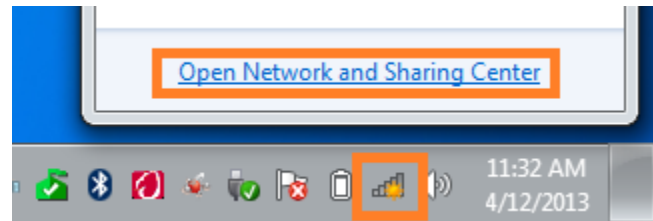
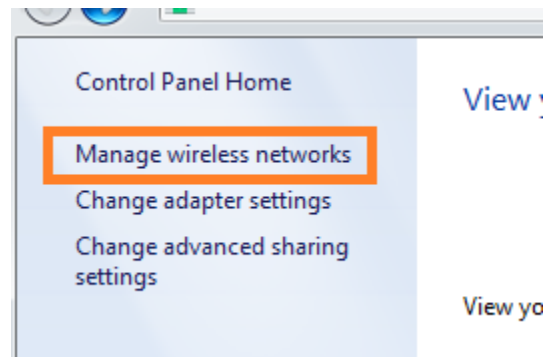


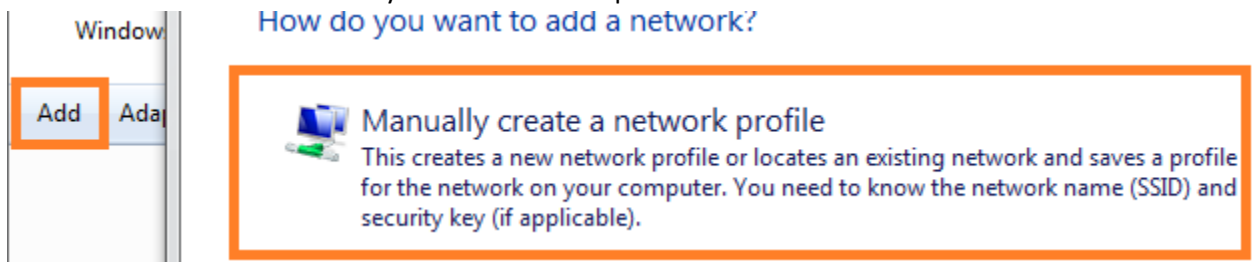
1. Right click on the wireless internet icon, and choose 'Open Network and Sharing Center'.



2. Choose 'Manage wireless networks'.



3. Choose 'Add' and then 'Manually create a network profile'



4. Enter the information as shown below, and choose 'Next' (Staff would type: OA-Staff)
[Enter information for the wireless network you want to add](#)

Network name:

Security type:

Encryption type:

Security Key: Hide characters

Start this connection automatically

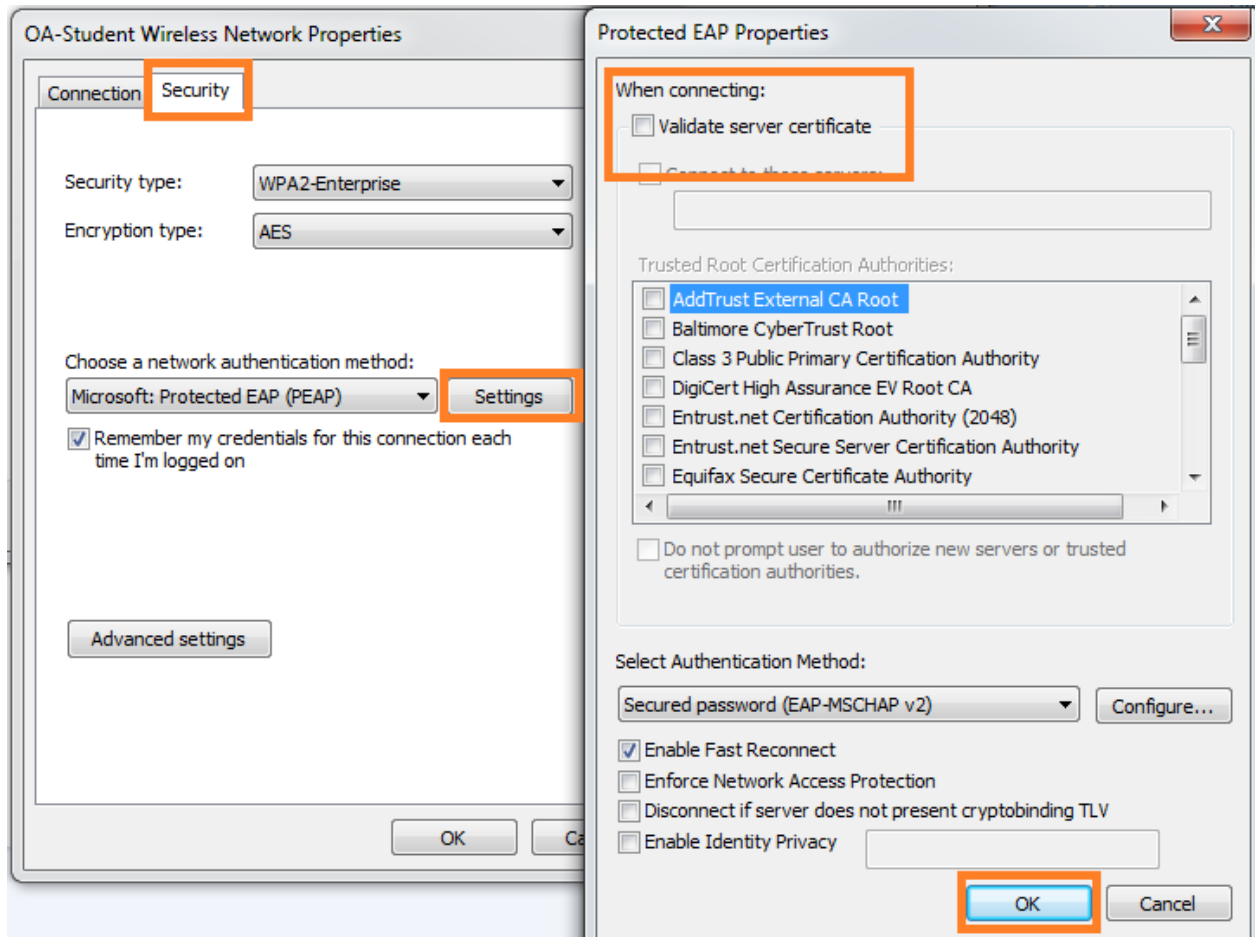
Connect even if the network is not broadcasting

Warning: If you select this option, your computer's privacy might be at risk.

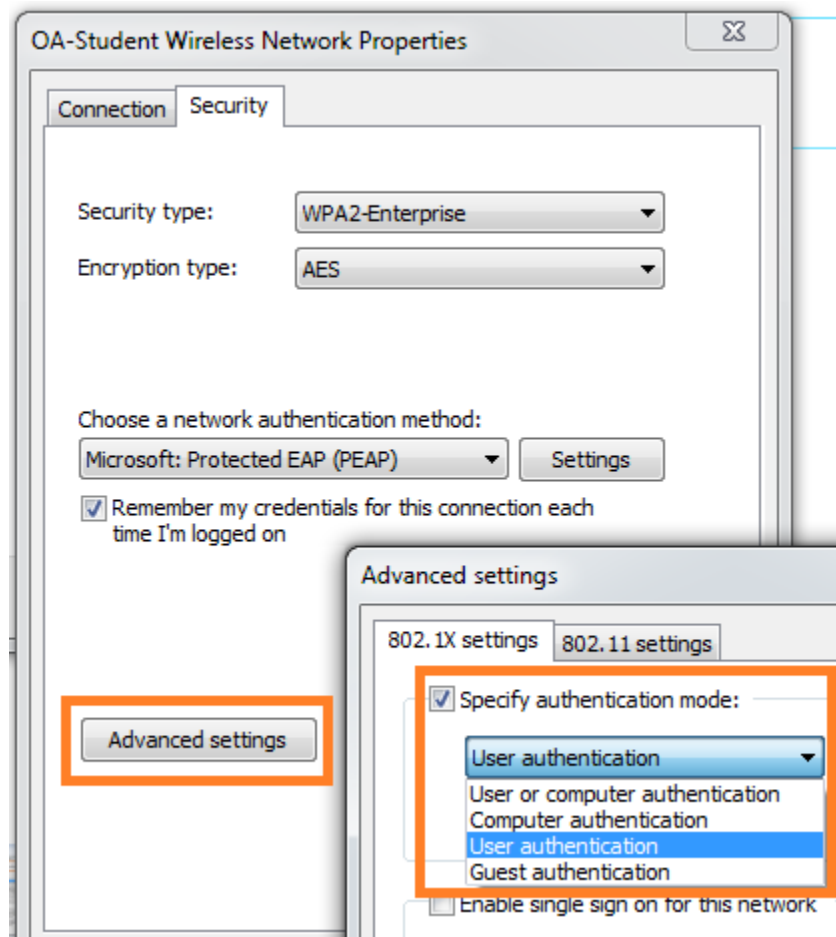
5. At the next screen click on 'Change Connection settings'

[→ Change connection settings](#)
Open the connection properties so that I can change the settings.

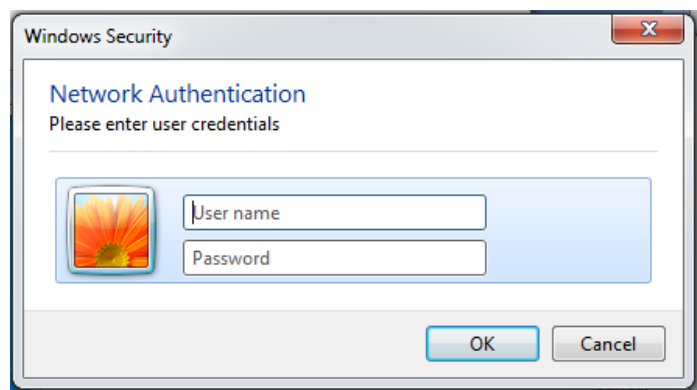
6. Choose the 'Security' tab, the 'Settings' button, and uncheck 'Validate server certificate'. Click 'OK'.



7. Back in the 'Security' tab, choose 'Advanced settings' and check 'Specify authentication method'. From the dropdown, choose 'User Authentication'. Click 'OK' on these windows to save.



8. Now when you connect to OA-Student (or OA-Staff) for the first time, you will be prompted for a username and password. Use the same username/password you would use to log in to the computers at the high school.



Once the initial connection is made, you will connect automatically when in range of the wireless.