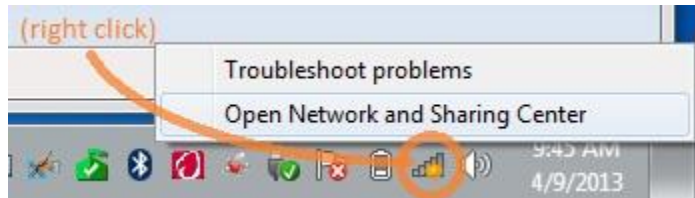


## Connecting to OAHS WiFi – Windows Users

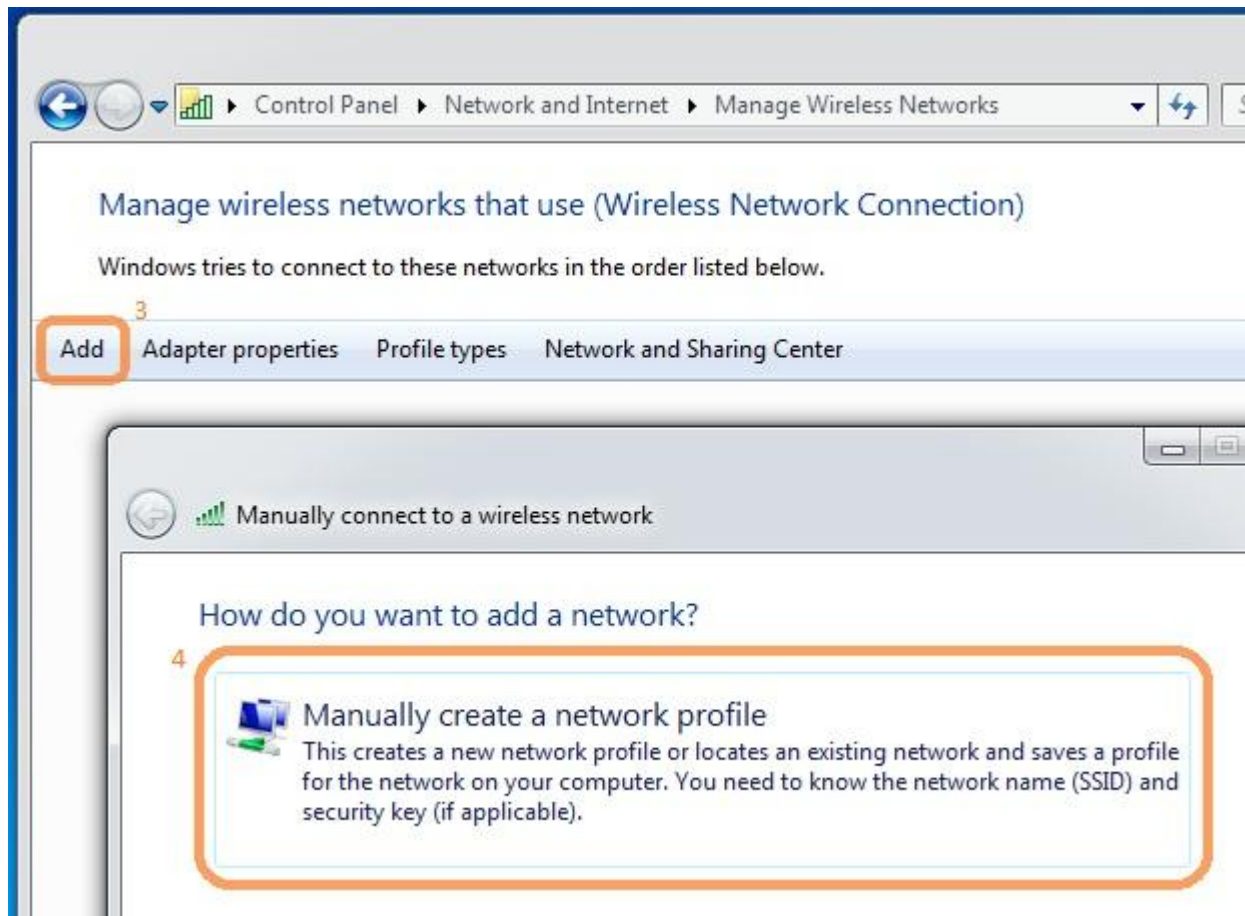
1. Open Control Panel > Network and Internet > Network Sharing Center  
(right click the wifi icon to get here)



2. In the left pane, choose 'Manage wireless networks'



3. Choose 'Add'
4. Choose 'Manually create a network profile'



5. Network Name: OA-Student
6. Security type: WPA2-Enterprise
7. Encryption type: AES
8. Start this connection automatically [should be checked]
9. Next

Manually connect to a wireless network

Enter information for the wireless network you want to add

Network name: 5 OA-Student

Security type: 6 WPA2-Enterprise

Encryption type: 7 AES

Security Key:   Hide characters

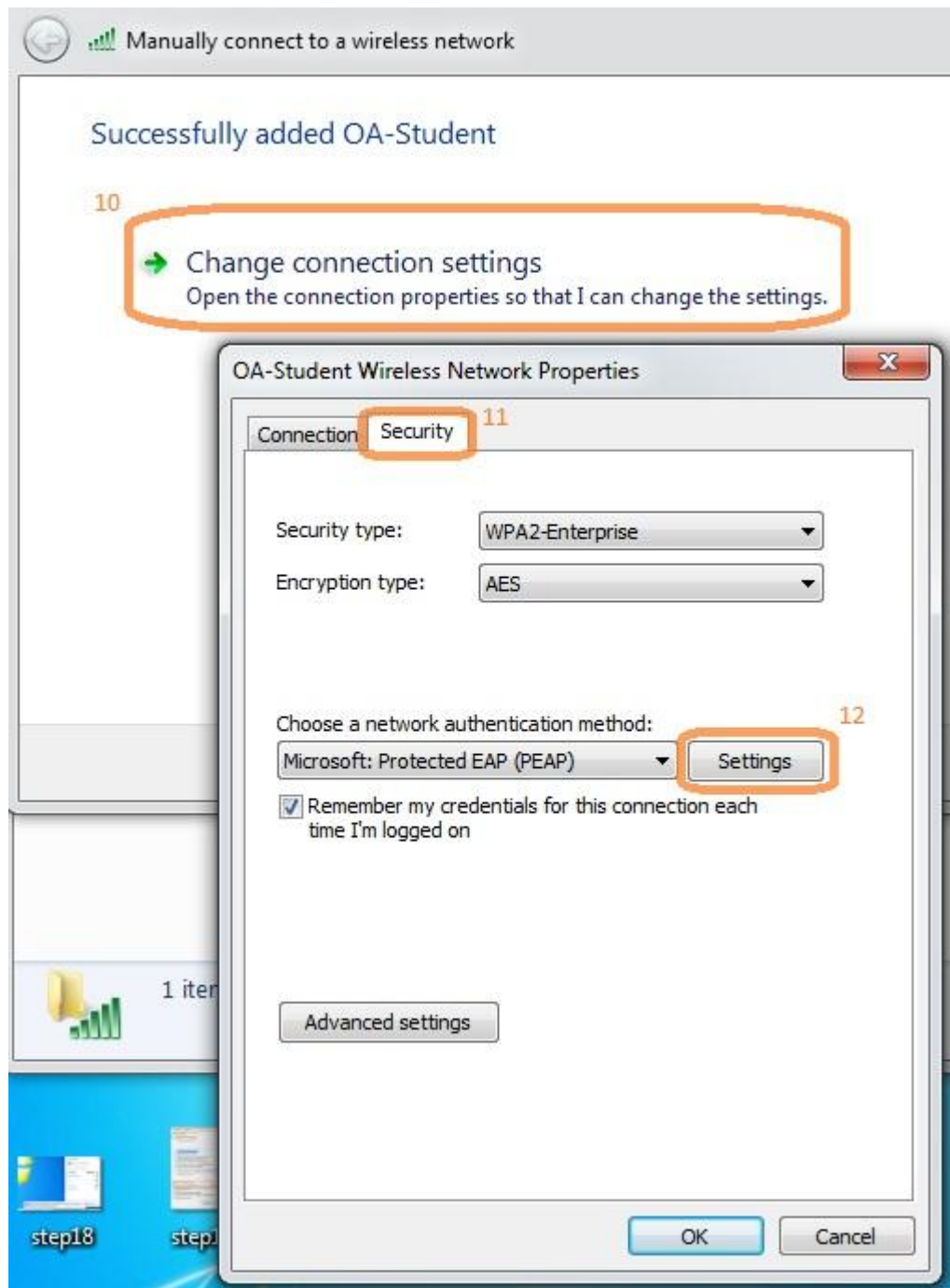
8  Start this connection automatically

Connect even if the network is not broadcasting

Warning: If you select this option, your computer's privacy might be at risk.

9

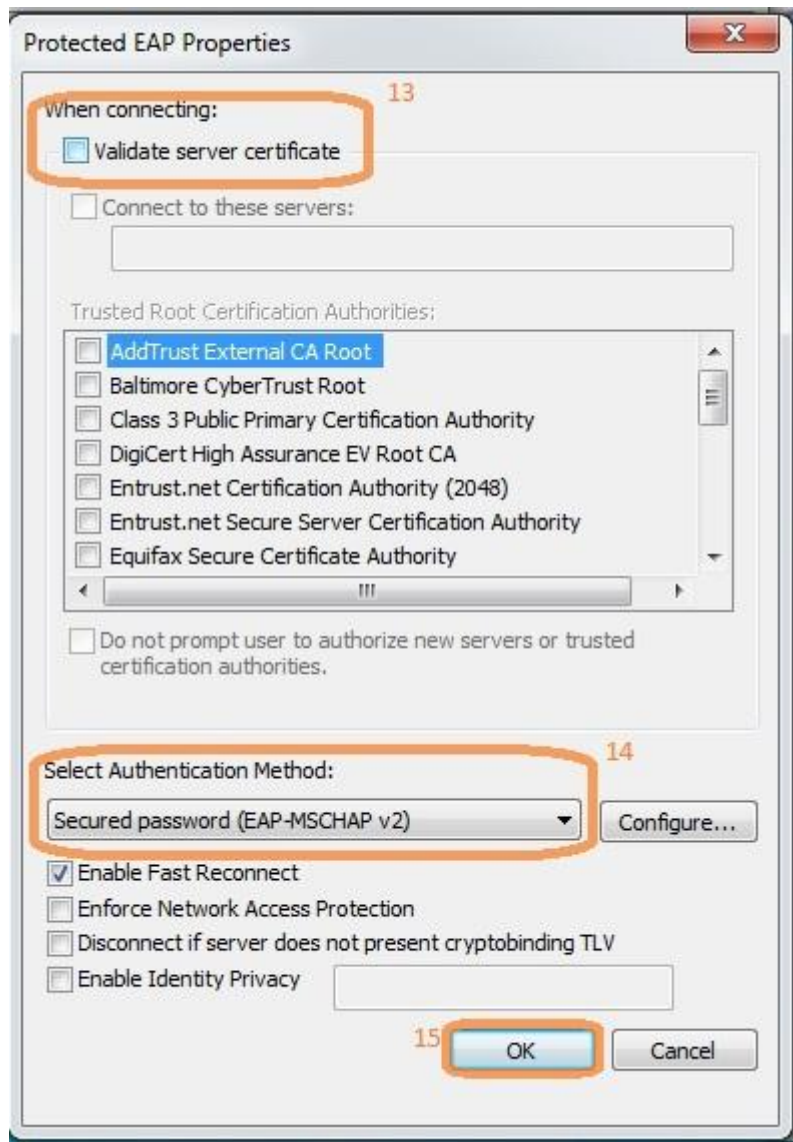
10. Click 'Change connection settings'
11. Choose the 'Security' tab
12. Choose the 'Settings' button



13. UNCHECK 'Validate server certificate'

14. Make sure 'Secure password (EAP-MSCHAP v2)' is set as the 'Select Authentication Method'

15. Click 'OK'



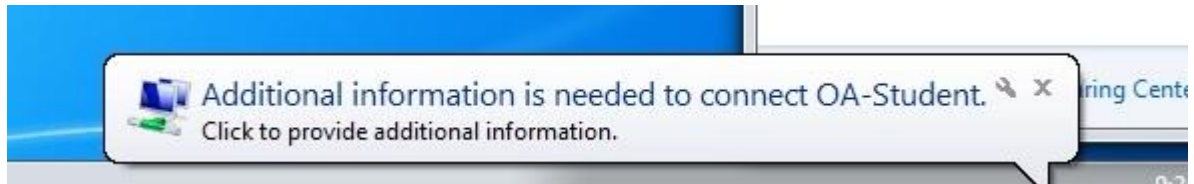
16. Back in the 'Security' tab, choose 'Advanced settings'



17. Check 'Specify authentication mode:' and choose 'User authentication' from the drop down. Click OK



18. You will see 'Additional Information is needed to connect OA-Student'



Click on this, and supply your computer login and password

19. Finally when you first open a web page, you will be prompted to accept the wifi terms and conditions. You will only have to go through these steps once, your computer will save your information.