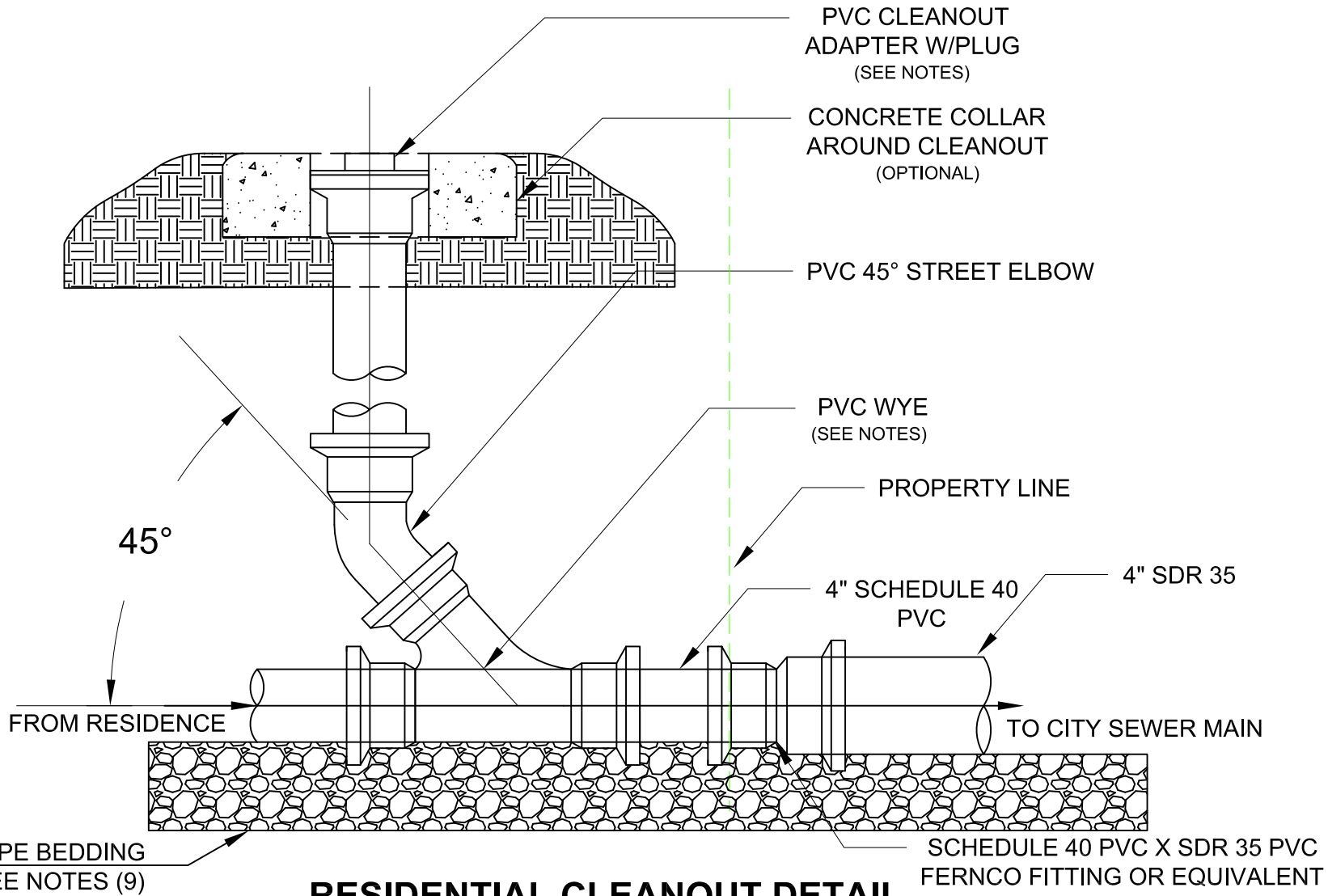


NOTES:

1. INTERNATIONAL PLUMBING CODE SHALL BE STRICTLY ADHERED TO.
2. ANY PERSON CONSTRUCTING A SANITARY CLEANOUT APPURTENANCE MUST CONSULT THE OFFICE OF THE BUILDING OFFICIAL AND OBTAIN A PERMIT RELEVANT TO THE WORK BEING PERFORMED.
3. CONSTRUCTION OF A SANITARY SEWER CLEANOUT WILL BE DONE WITH 4" SCHEDULE 40 PVC SEWER PIPE.
4. THE CLEANOUT WILL BE CONSTRUCTED USING A 4"x4"x4" PVC WYE; TEES AND TEE-WYES WILL NOT BE ACCEPTED. THE RISER SECTION OF THE CLEANOUT WILL BE BROUGHT BACK TO VERTICAL USING A 4"-45° PVC STREET ELBOW.
5. THE PVC CLEANOUT ADAPTER AND PLUG SHALL BE FLUSH WITH THE FINISH GRADE SO THAT IT WILL NOT BE A TRIPPING HAZARD OR BE DAMAGED BY LANDSCAPE EQUIPMENT. A CONCRETE COLLAR AROUND THE CLEANOUT IS RECOMMENDED; HOWEVER, IT IS NOT MANDATORY.
6. ALL PIPE CONNECTIONS WILL BE DONE ACCORDING TO THE PROCEDURES DESCRIBED IN ASTM 2855D USING SOLVENT BASED PVC CEMENT AND PRIMER DESCRIBED IN ASTM D2564.
7. A FLEXIBLE FERNCO STYLE RUBBER COUPLING SHALL BE USED TO JOIN THE CUSTOMERS SEWER LATERAL TO THE EXISTING CITY SEWER LATERAL.
8. ALL WORK MUST BE INSPECTED BY THE CITY PLUMBING INSPECTOR BEFORE IT CAN BE BACKFILLED.
9. BEDDING/BACKFILL MATERIAL SHALL BE INSTALLED IN ACCORDANCE WITH SECTION 306.2 OF THE INTERNATIONAL PLUMBING CODE.



RESIDENTIAL CLEANOUT DETAIL

NOT TO SCALE



**RESIDENTIAL
 CLEANOUT DETAIL
 ON PRIVATE PROPERTY**

MJB	10/23/2015	REVISION (NOTE 9)
BY	DATE	DESCRIPTION
PROJECT: WATER RESOURCES		
FILE NAME: CLEANOUT DETAIL		
DATE: 01/03/2015		
DRAWN BY: MB		
APPROVED BY: JC		

CITY OF
 ELIZABETHTON
 ENGINEERING DEPT.

SCALE: NTS

SHEET 1