

# NORTHERN BEAUFORT TRANSIT MASTER PLAN

A Transit Master Plan (TMP) is a guiding document that assists decision-makers in identifying and addressing the public transportation needs of the community. The Lowcountry Council of Governments (LCOG) is developing a Transit Master Plan (TMP) for Northern Beaufort County which will define community transportation needs, evaluate transit service strategies, and provide short, mid, and long-term recommendations.

## GOALS

The TMP Goals were established using public and stakeholder input, existing community plans with established community goals, and technical analysis findings. These goals will serve as the guiding principles for the TMP process and future service recommendations.



ENHANCE  
QUALITY OF LIFE  
AND THE ENVIRONMENT



BE ACCESSIBLE  
FOR ALL



SUPPORT ECONOMIC  
GROWTH AND DEVELOPMENT



BE SAFE  
AND SECURE



BE EFFICIENT AND  
FINANCIALLY SOUND



EXISTING CONDITIONS  
PUBLIC INPUT RESULTS

## SCHEDULE

Phase I of the TMP concluded in March 2025 resulting in feedback from Stakeholders and the Public, an Existing Conditions Analysis, and development of Goals, Objectives and Measures of Effectiveness. This fact sheet summarizes the key findings from Phase I.

## PUBLIC INVOLVEMENT

Phase I of the public involvement program launched in Nov 2024. The first phase focused on study awareness and collection of input regarding local needs, goals, and priorities. A combination of traditional and web-based techniques were used to engage with the public including:

- In-person community events
- Social media posts and ads
- Printed flyers and fact sheets
- On-line and printed surveys
- Stakeholders meetings
- Community Ambassadors program

The following proprieties emerged from the public.



REDUCED TRAFFIC  
CONGESTION

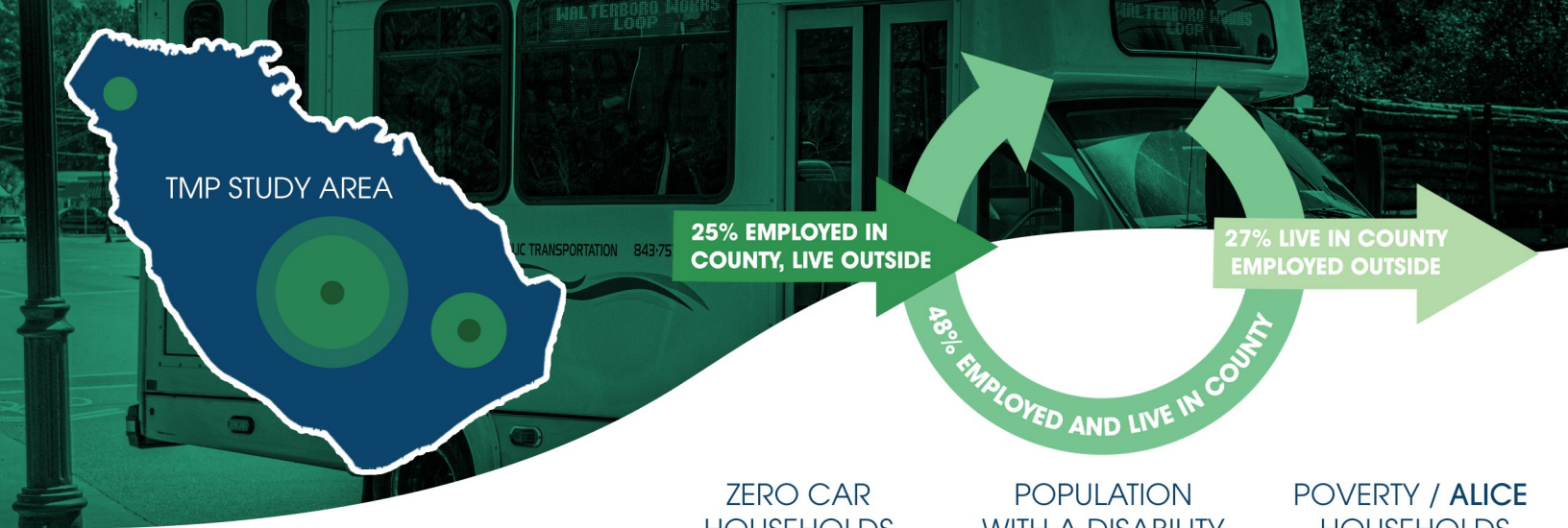


SAFE AND ACCESIBLE  
TRANSPORTATION FOR ALL



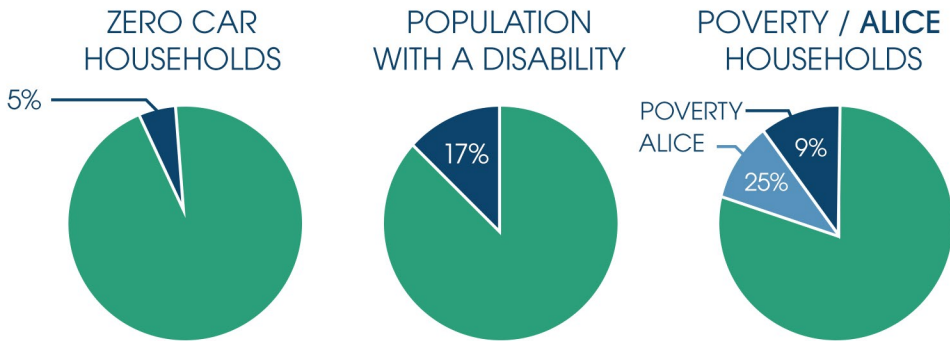
ECONOMIC DEVELOPMENT  
AND TOURISM





# EXISTING CONDITIONS

The Northern Beaufort County TMP Existing Conditions Analysis is a key element of the planning process that documents the current natural, built, and social characteristics of the study area. The analysis includes six primary areas of assessment that collectively form the foundation for transportation needs and service strategies. These areas of assessment are specified below.



## ALICE THRESHOLD

Asset limited, Income Constrained, Employed. To learn more visit [www.unitedforalice.org](http://www.unitedforalice.org)



TRANSIT PROPENSITY



ECONOMIC PROFILE



TRIP GENERATORS



COMMUNITY RESOURCES



LAND SUITABILITY



EXISTING & FUTURE TRANSPORTATION NETWORK

# KEY FINDINGS



POPULATION PROJECTED TO GROW



MAJOR DESTINATIONS CONCENTRATED IN URBAN CENTERS



DENSITY AND LAND SUITABILITY SHAPE TRANSIT FUTURES



EMPLOYMENT INFLOW/OUTFLOW HIGHLIGHTS IMPORTANCE OF INTER-COUNTY TRAVEL

FOR ADDITIONAL INFORMATION, CONTACT US  
<https://www.lowcountrycog.org/> | 843-473-3990