



# Association *of* Minnesota Counties

## **CARES Expenditure Trends** **August 24, 2020**

# Top Trends



- 40% of counties have not finalized plans
- External vs internal spending is on average 50/50
- Areas receiving the most amount of funding: for-profit business assistance followed by non-profit assistance, public health, and public safety
- Areas receiving the least amount of funding: broadband and economic assistance for individuals/households

# For-Profit Business Assistance



- Six counties allocating 50%+ to this program; most counties allocating between 10-30%
- Majority of grants between \$5,000 to \$10,000
- Half the counties surveyed are working with local economic development agency
- Common businesses applying: Restaurants, Lodging & Travel, Shopping & Retail, Arts, Culture & Entertainment, Health & Wellness

- Most counties using 10-30% of CARES for public health
- Undecided on how to distribute money in department
- Projects funded: mobile testing & vaccination trailer, respirator fit test machine, website updates, hotline, additional services for vulnerable communities

# Economic Assistance for Individuals



- Half of counties not funding individual assistance. Other half are using 1-20% of allocation
- Counties are funding assistance for rent/mortgage, utilities, transportation, childcare, and shelter for the homeless
- Common assistance requests: rent/mortgage, utilities, childcare, and home repair (furnace, A/C, etc.)





# CLAY COUNTY CARES ACT PROGRAM

---

AUGUST 24<sup>TH</sup>, 2020

COMMISSIONER JENNY MONGEAU

STEPHEN LARSON, ADMINISTRATOR

# Overview

---

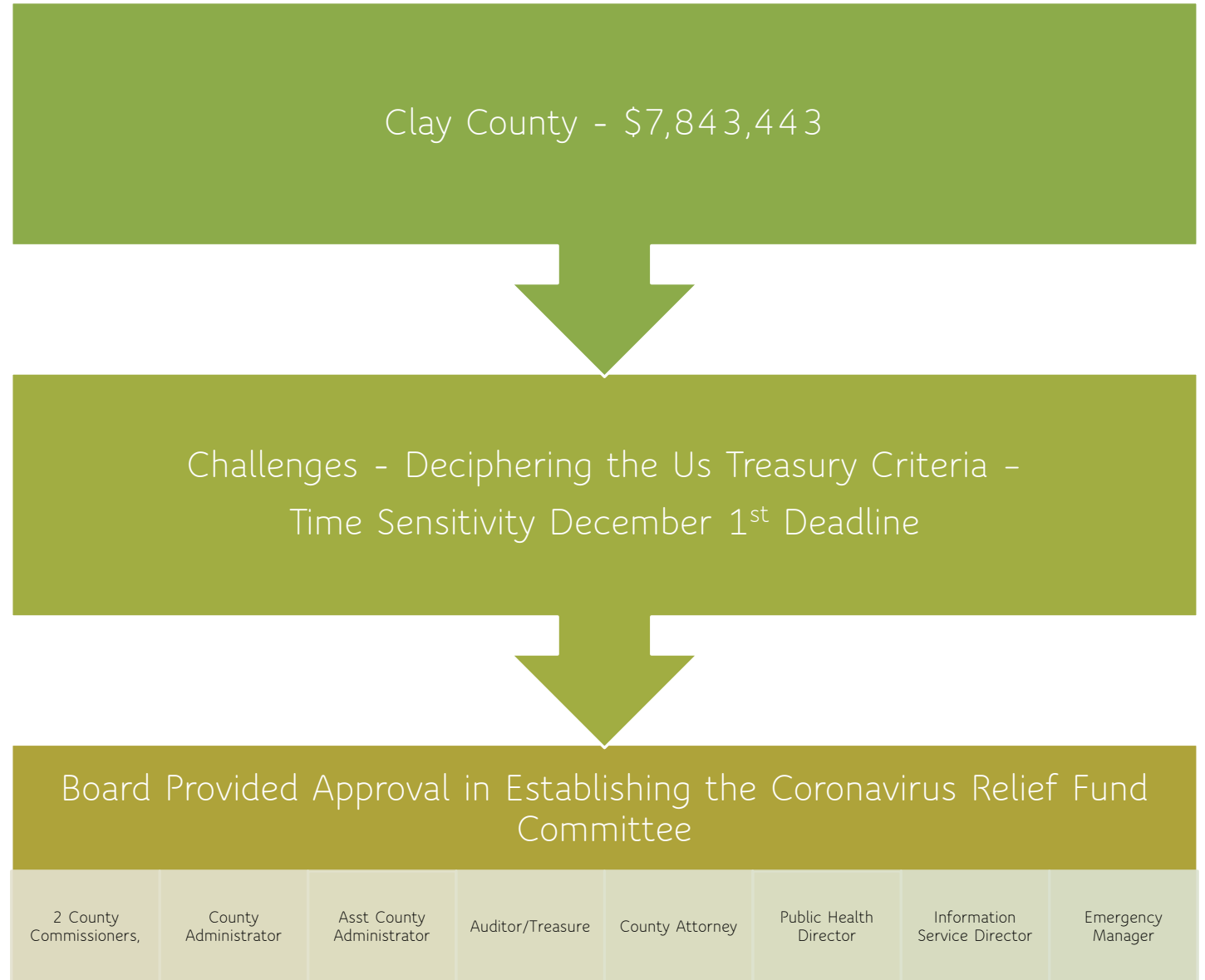
Process of Establishing the Clay County C.A.R.E.S Act Program

Selecting Clay County C.A.R.E.S Categories and Funding

Describe the Clay County 6-Category Approach

Clay County C.A.R.E.S Small Business COVID-19 Relief Grant Program

# Establishing the Clay County C.A.R.E.S Act Program





# Coronavirus Relief Fund Committee

---

First Meeting – July 17 – Weekly Meetings

Education on the Coronavirus Relief Fund Programs –AMC, NACO, MMB Webinars, County Examples

Brainstormed Funding Allocations

Discussed Counties Funding Needs vs. Public Needs – Best Way to Balance

Explored Potential Relationships Within Community Partners/Approached by Agencies

FEMA vs CARES Funds or Both

City and Township Involvement –Meetings, Mailings, Phone Calls

# Coronavirus Relief Fund Committee

---

“How Are We Going To Spend 7.8 Million Dollars?

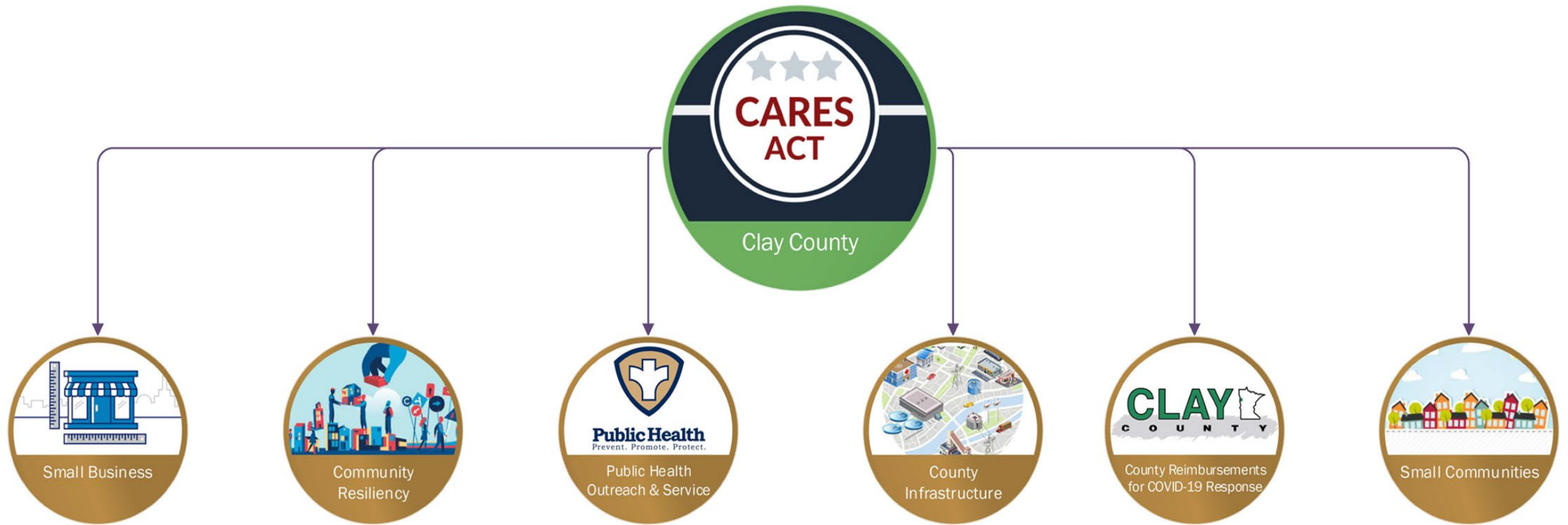
Became

“Are Our Funds Going to Go Far Enough?”

Our Committee Made a Conscience Effort to Focus on Areas That Had Not Received CARES Funds

- Schools – Governor’s Emergency Education Relief Fund (GEER) and Elementary and Secondary School Emergency Relief Funds (GEER)
- Community Action Agency – Eviction Prevention, Food and Childcare Assistance

Our Framework of Our Program Began to Take Shape

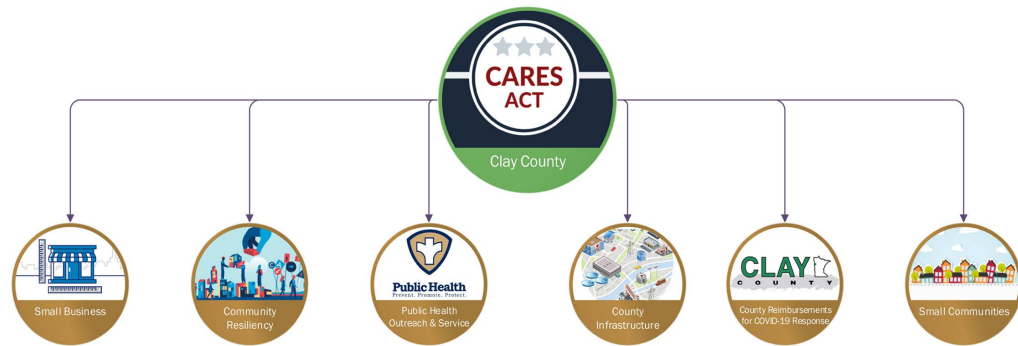


# Board Approved CARES Allocation Categories

\*Approved - 07/28/2020

# Category Funding Breakdown

---



Small Business - 2.25 Million

Community Resiliency - \$750,000

Public Health Outreach & Service - 2 Million

County Infrastructure - 1.5 Million

County Reimbursements for COVID-19 Response  
- 1 Million

Small Communities - \$86,161

Total - \$7,586,161      Remaining Misc - \*\$257,282

# Community Resiliency

\$750,000



# Community Resiliency

---

School Based Mental Health

Community Based Mental Health

Non-Profit Businesses - \$250,000 - Up to \$10,000 Per Application

- 501©3
- 501©19
- If Funding Dollars Remain, They Will be Allocated to Other Programs/Categories



# Public Health Outreach & Service

2 Million Dollars



# Public Health Outreach & Service

---

Public Health Has Led the COVID-19 Pandemic Response for Clay County

- Guidance and Direction from the CDC and Minnesota Department of Health

“Extension of Community Resiliency”

Community Education & Outreach

Testing

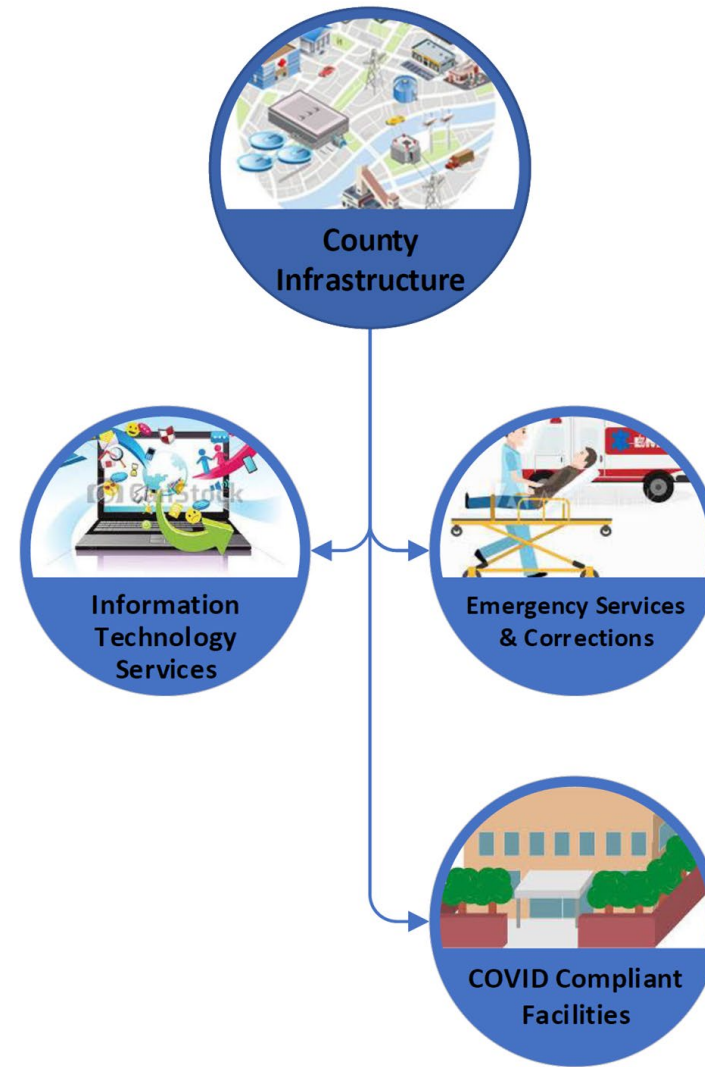
Contact Tracing

Case Investigation

Equipment Necessary to Respond to the Pandemic

# County Infrastructure

1.5 Million



# County Infrastructure

---

Information Technology Services – Ensure Proper Remote Work Infrastructure Capabilities

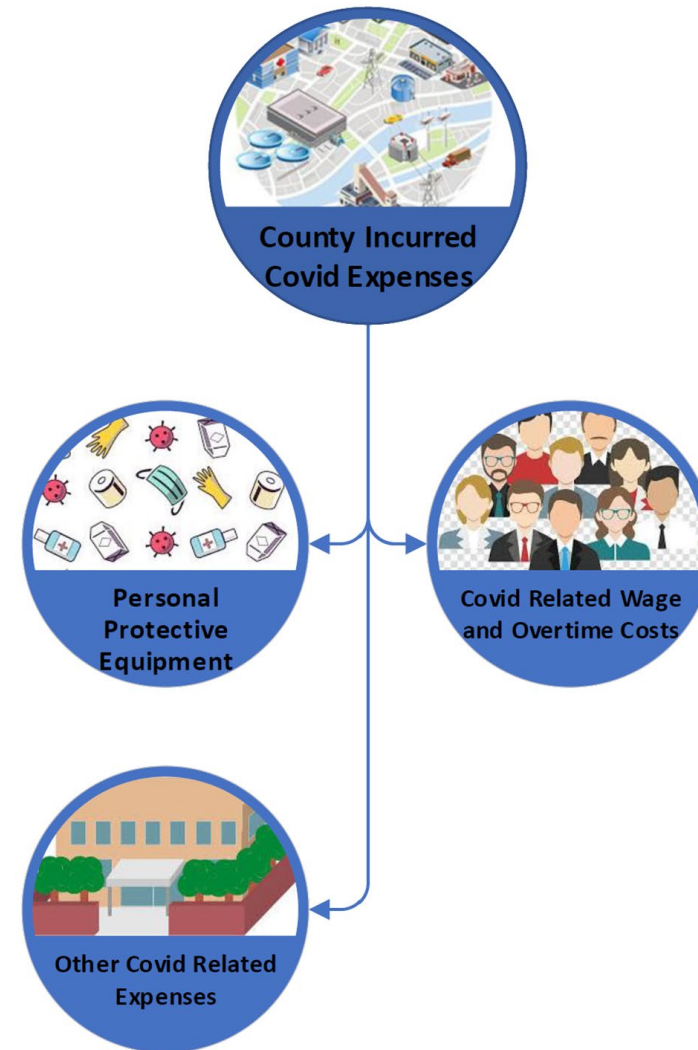
- Initial, Entry-Level Investment

COVID-19 Compliant Facilities

- Adequate Social Distancing – Employee and Citizens
- Limiting the Spread Through Operating Practices Campus Wide – Windows/Plexiglass, Touch-Free Fixture, “Sanitizing Guns”
- Evaluate Campus Buildings – Motor Vehicle, Detox, Meeting Rooms, Courtrooms, Multi-Use Community Space – Boardroom, Planning Commission, Solid Waste Committee, Jury Deliberations, Back-Up Emergency Operations Center

# County Incurred COVID-19 Expenses

1 Million



# County Incurred COVID-19 Expenses

---

COVID-19 Related Wage and Overtime Costs

Personal Protective Equipment – P.P.E.

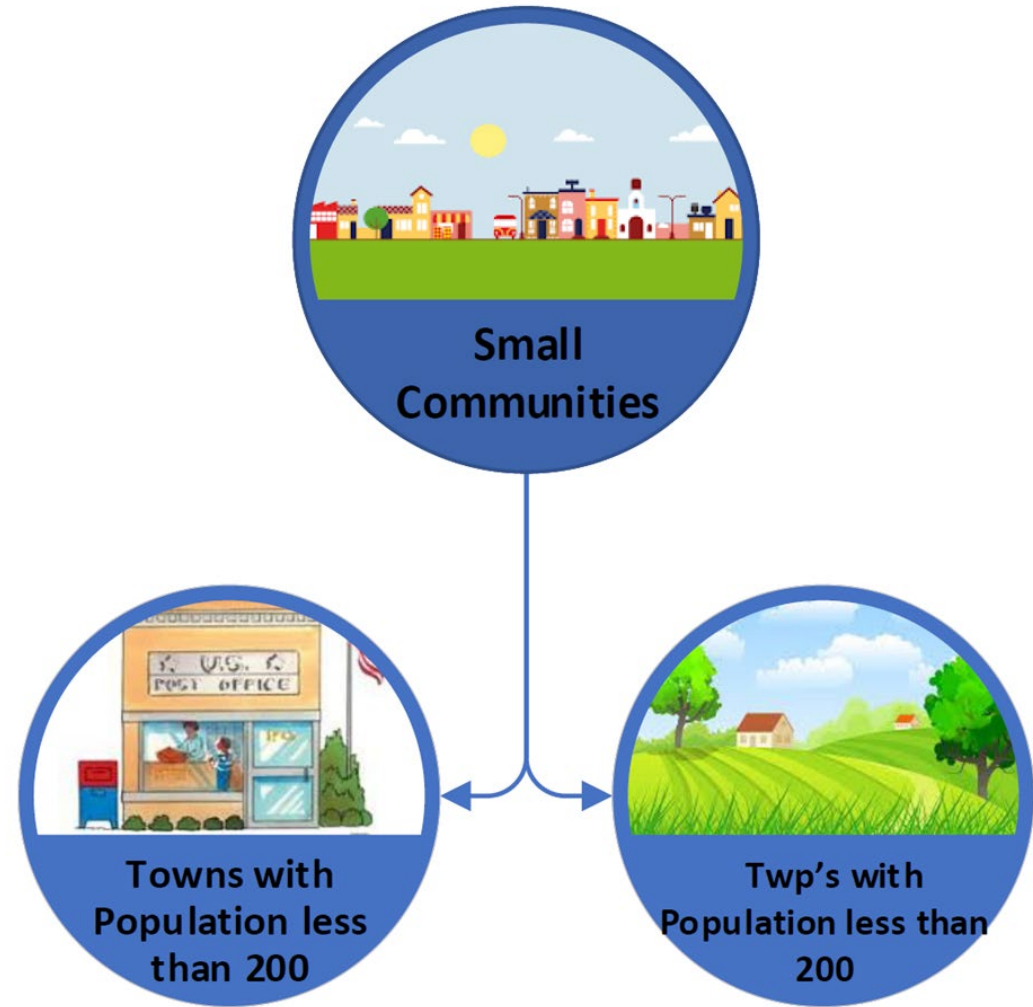
Hand Sanitizer

Other COVID-19 Related Costs – Signage, Plexiglass



# Small Communities

\$86,161



# Small Communities

---

Of Clay County's \$7,843,443, \$86,161 Was Designated to be Provided To Cities and Townships Under Populations of 200 Citizen's for COVID-19 Approved Reimbursements.

Appropriation are Base Off of a State Of Minnesota Formula

Cities and Townships Will be Required to Complete a "County Coronavirus Fund – Small City and Township Expense Reimbursement and Certification Form" Along with Their Request

# Cities and Townships w/Over 200 Citizen's

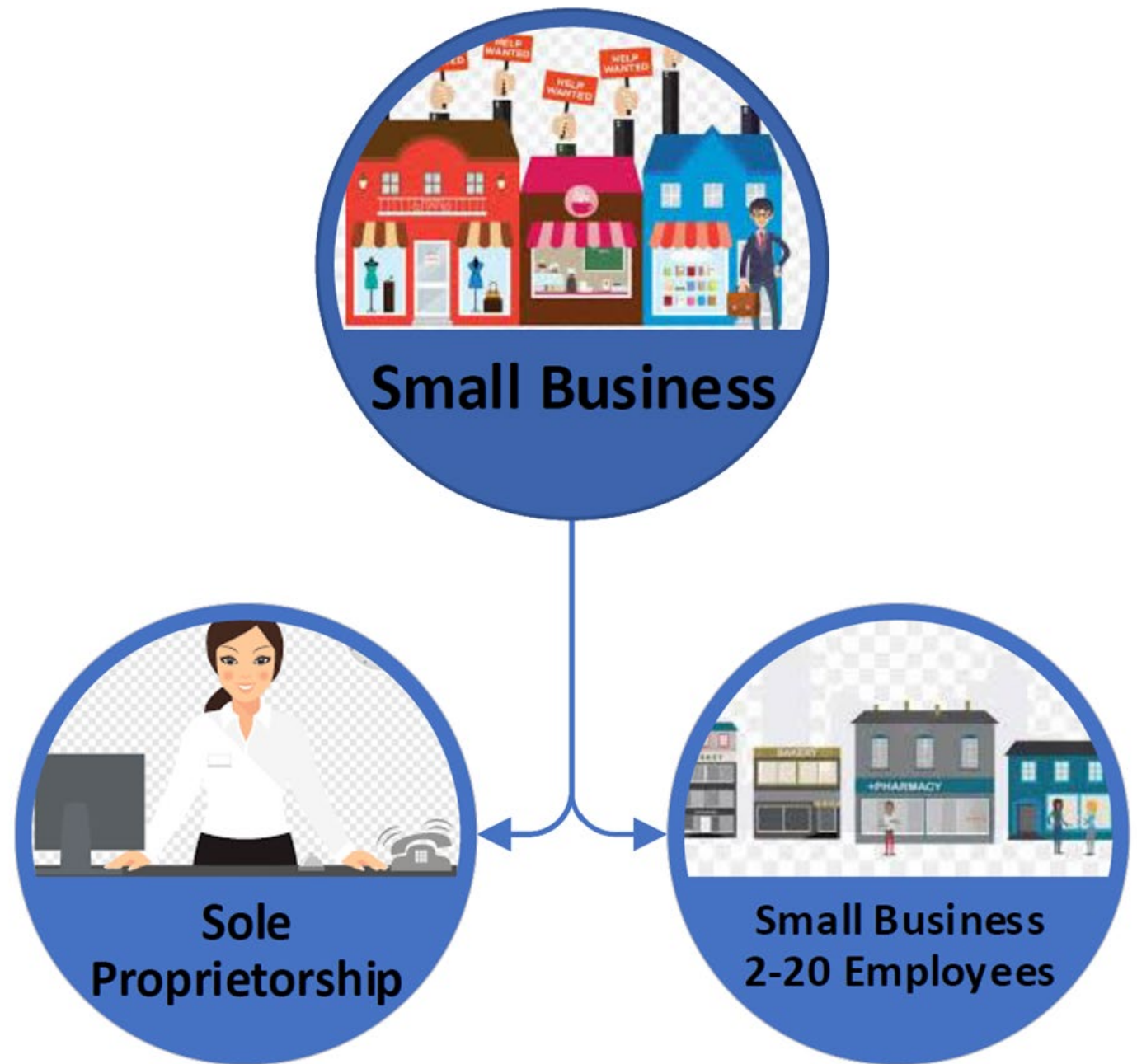
Cities and Townships w/Over 200 Citizen's Are Eligible for Direct Funding

- The County Encourage Cities and Townships Who Are Eligible for Direct Funding Under the CARES Act to Complete the Necessary Documents Even if They Do Not Believe They Have Incurred COVID-19 Expenses
- Areas Where Dollars Could be Transferred
  - Clay County School Districts
  - Local Emergency Management Agencies

# Small Business Relief Grant

---

2.25 Million Allocated

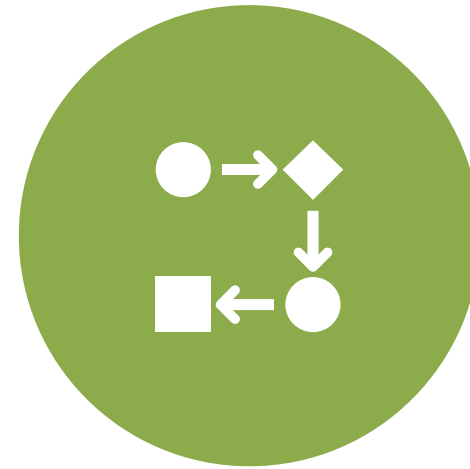


# Small Business Relief Grant

---



COLLABORATION WITH ALL  
CITIES WITHIN CLAY COUNTY



ONE-STEP APPLICATION  
PROCESS

# Small Business Relief Grant

---

Equitable Distribution to All Agencies Regardless of the Size of the City

Encouraged Our Small Cities to Take Care of Municipal Needs

Collaborated With the City of Moorhead

- City - EDA
- County - Automated Clearing House Program (ACH)



# Small Business Relief Grant

---

## Challenges

- Original Goal Was to Have One Application
  - Different Criteria – City Preference Groups, Non-Profits
  - First-Come, First Serve vs Everyone Gets Some Fund
- Coordinating Timelines
  - Public Comment Period
  - Length of Time Accepting Applications
- Small Cities Were Concerned That Their Citizens May Feel There Were Not Doing Enough
  - News Conference – Photo Opportunity – Collaboration
- Defining Sole Proprietor and Home Business
  - Licensed Daycare

# Small Business Relief Grant

---

Emulated MN DEED Small Business Grant Format

- Provided an Established Framework
- Many Businesses Had Unsuccessfully Applied
- Application Would Not be a Burden

Businesses with 2-20 Full-Time or F.T.E. Employees or Fewer- May Receive Up to \$10,000 Per Application

Sole Proprietors - May Receive Up to \$3,000 Per Application

- Limited to;
  - Licensed Daycare Providers - Home Daycare Eligible

# Small Business Relief Grant

---

## Application Process

- 3-Week Application Process – Aug 17<sup>th</sup> to Sept 7<sup>th</sup>
- First 7 Questions Determine Eligibility – Cannot be Submitted if the Agency Doesn't Meet Criteria
  - Email Address & Phone Number for Questions
- Report a 10% Revenue Loss from Mar 1<sup>st</sup> – July 31<sup>st</sup> 2019 vs 2020
- Currently In Good Standing
- Affidavit Signed
- Receive an PDF of Application if the Agency Provides a Successfully Submission

# Small Business Relief Grant

---

Application Review Committee -

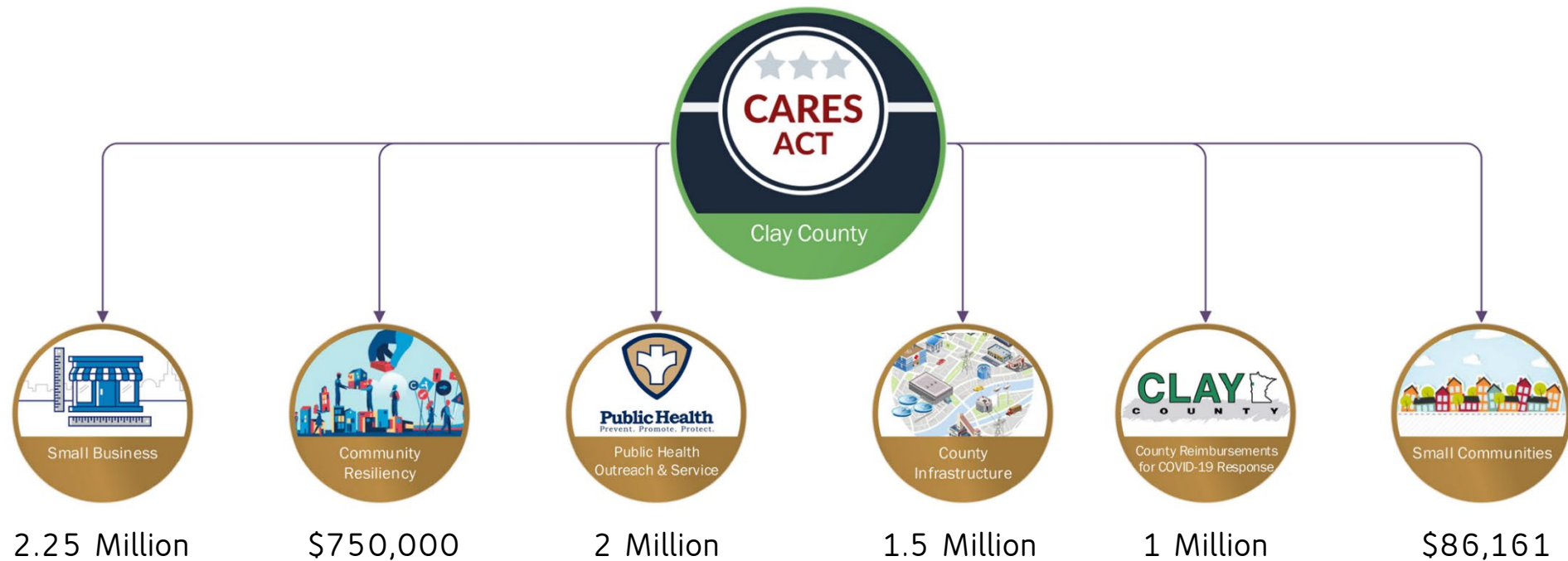
- County and Small City Representatives/City of Moorhead has Their Own Committee
- Each Application Will Be Reviewed Twice - City/County Rep
- Reviews Done Remotely

Final Financial Allotments to Each Business Will Ultimately be Determined by the Number of Approved Businesses Application Received by the Deadline

- City of Moorhead Closes One Week Prior
- Larger Pool of Applications

# CARES ACT PROGRAM RECAP

---



# CARES ACT PROGRAM

---



QUESTIONS?



DISCUSSION?





# CARES ACT Relief Funds

AMC Update 8/24/2020

Chairman Neal Gaalswyk

# Cass County Board - Categories

CARES ACT Funds for Cass County = \$3,692,442.00

- Business Assistance (Building modifications, Protective Equipment, HVAC, Teleworking)
- Non-profit Assistance (homelessness, food shelf, etc.)
- County Building Modifications (AV, Courtrooms, HVAC, Traffic Control, Capacity, Restrooms)
- County Issued Personal Protective Equipment
- Distance Learning, Working from Home and Telemedicine (Teleworking, Hotspots and Equipment)
- County Staff Expenses (COVID-19 Emergency Leave, Unemployment, Overtime, VPN, Telework Equipment, Payroll Expenses for Substantially Dedicated Staff)
- Increases in Solid Waste, Household Hazardous Waste and Recycling (Volumes and Costs)
- Cleaning and Disinfection (Additional Supplies, Additional Staff time)
- Partnerships with public service providers (Small Cities, Townships, Joint Power Partners)

# Cass County Board - Program Ideology

- Let demand determine where funds are spent.
- No limits on amounts (Each business and organization is unique; some are failing, and some are thriving during the pandemic).
- No limits by categories (We hope need will allocate funds to serve as many people as possible).
- Follow the federal guidelines so this isn't a future local levy.
- We try to keep things simple. When people hear "I'm from the government and I'm here to help" they tend run the other way.
- Using the local media partners, the County website and word of mouth to advertise.

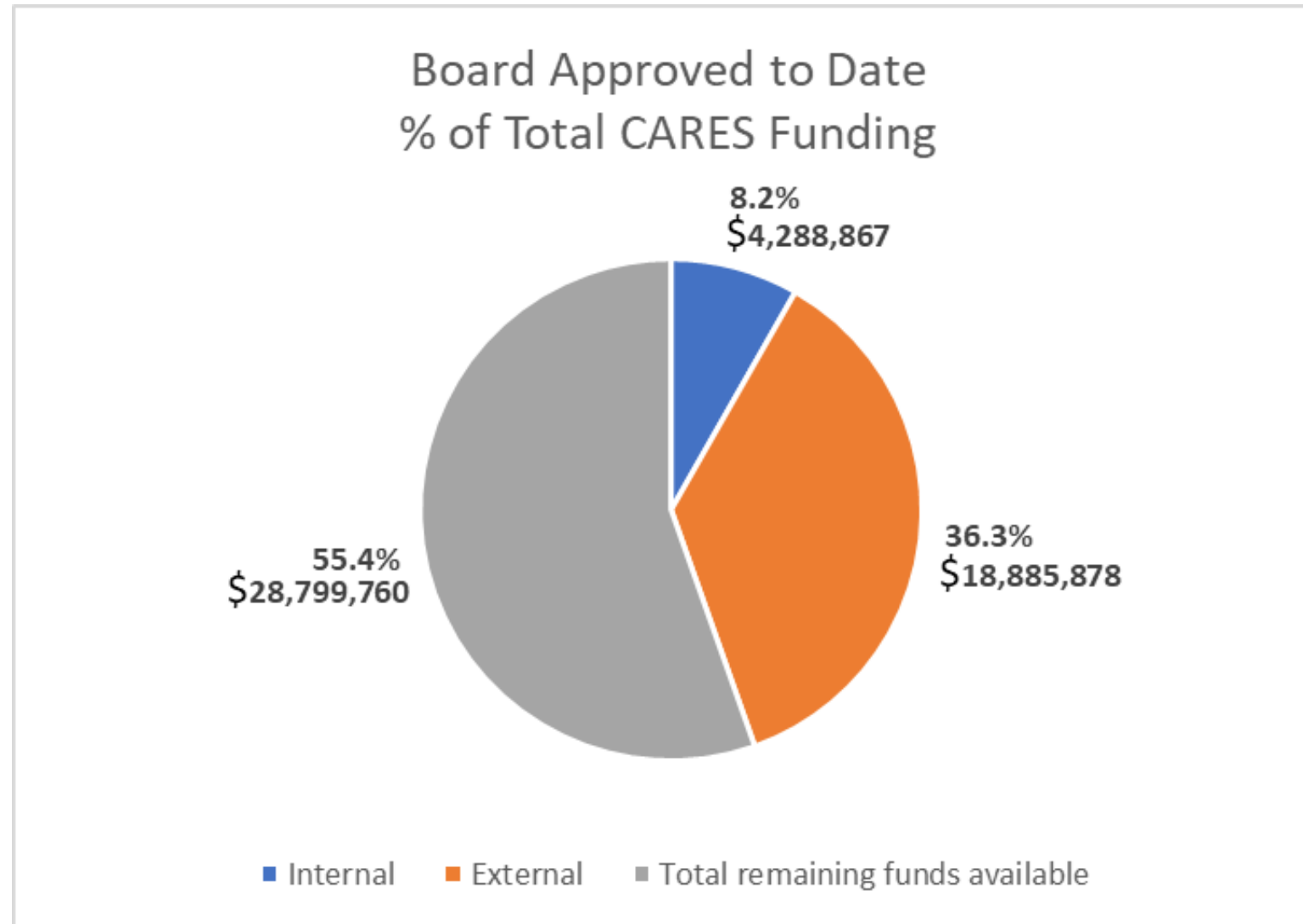


# Dakota County CARES

AMC Webinar

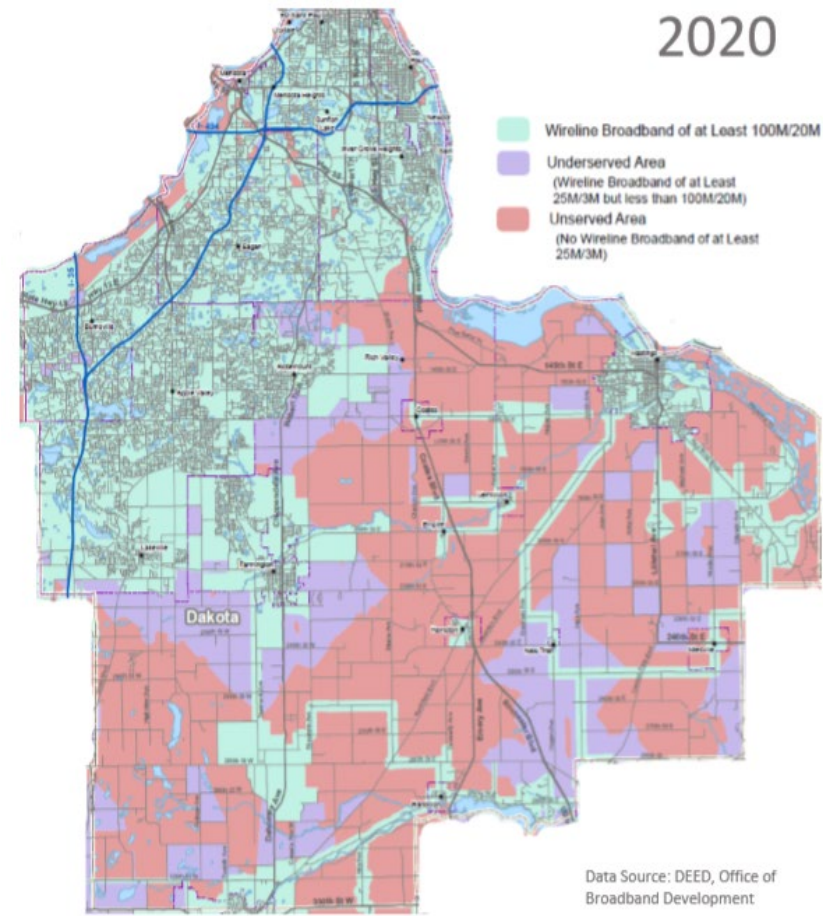
August 24, 2020

# Board Allocations to Date



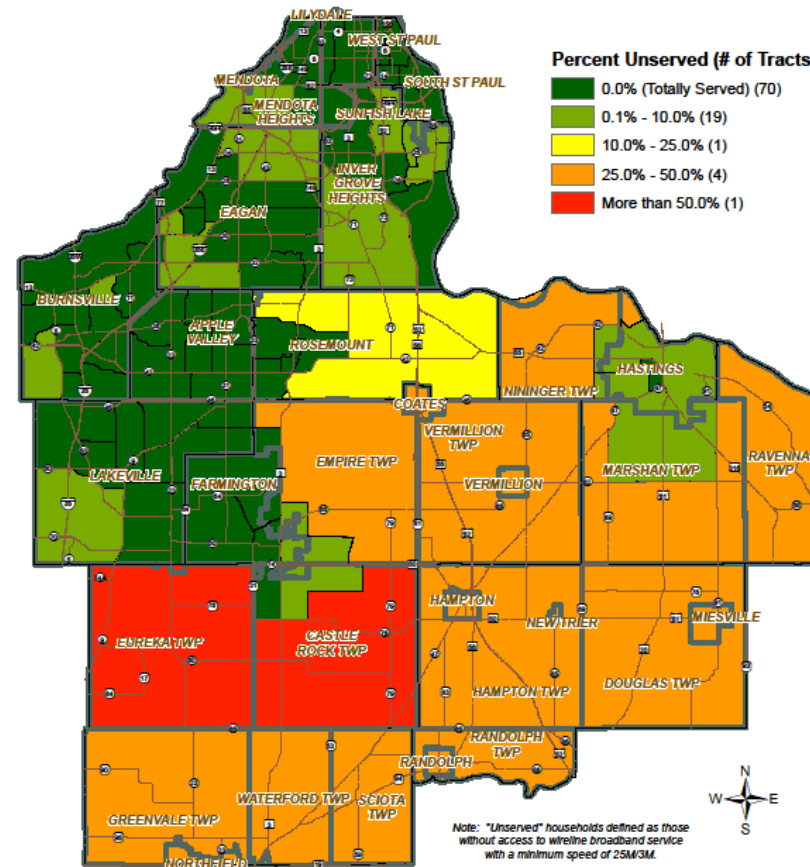


# Un / Underserved Areas



# Potential CARES Project Impact

Percent of Households Without Broadband Service  
by Census Tract



Map dated July 2020  
Source: MN DEED Office of Broadband Development  
Prepared by the Dakota County Office of GIS

# CARES Project Timeline



- Letters of Intent sent July 29
- Responses due August 12
- Board will be updated August 25
- Board approval requested in September



# LOI Responses



Company	Description	Potential Users	Type	CARES Contribution	Vendor Contribution	Cost per Potential User	Monthly User Cost	Download Speed
T-Mobile	Hot Spots with no cost for 1 year	1000 2000 3000 4000 5000	Wireless	\$327,720 \$645,600 \$953,280 \$1,250,880 \$1,514,400	\$327.72 \$322.80 \$317.76 \$312.72 \$302.88	\$302.88	\$0	30-50mbps
SE Wireless	New tower sites at New Trier, Farmington, 200 <sup>th</sup> St, Hastings MNDOT, Rosemount MNDOT and Northfield. Additional LTE service to Lillehei, Vermillion, Miesville, Beskau, 200 <sup>th</sup> St and Polk	197406	Wireless	\$888,300	\$0	\$4.50	\$45 \$65 \$95	25mbps 50mbps 100mbps
Gigibit	Apartment complexes Cobblestone Square, Crossroads Common, Parkview Plaza. Townhomes Chasewood, Glenbrook, Quarry View Erin Place. This is just a partial list	2000-4000	Fiber to the building	\$1,642,746	\$0	\$821.37	\$19.99*	100mbps
HBC	Service to Niniger, Miesville and C.R 46	835	Fiber to the home and wireless	\$1,023,027	\$200,000	\$1,225.18	\$79.99*	60-100 mbps
Charter	Service between McAndrews Road and 120 <sup>th</sup> Street W and includes Danbury Way ("McAndrews Addition") 104 homes in the McAndrews Addition	104	Fiber to the home	\$203,000	\$147,000	\$1,951.92	\$17.99** \$69.99 \$89.99 \$129.99	30 mbps 200mbps 400mbps 940mbps
Access Communications	Wireless service for Southwest region	150	Wireless	\$97,348.50	\$35,997	\$648.99	\$0	30-100 mbps

\*Monthly user costs are discounted

\*\* Low cost option available for qualifying households

# Authority to use CARES funding



- Expenses to improve telework capabilities for public employees to enable compliance with COVID-19 public health precautions.
- Expenses to facilitate distance learning, including technology improvements, in connection with school closings to enable compliance with COVID-19 precautions.
- Expenditures [for rural broadband] would only be permissible if they are necessary for the public health emergency. The cost of the projects that would not be expected to increase capacity to a significant extent until the need for distance learning and telework have passed due to this public health emergency would not be necessary, and thus would not be eligible.

# Supporting Remote Work



- 'Flipped' 80% of staff in a little over a week
- Prior investments and experience were key
- Scaling up fast brought new challenges
  - Secure, reliable remote access (VPN)
  - Virtual meeting software
  - Laptops
  - Connectivity/broadband capacity
  - Managing a dispersed, remote workforce

# CARES Telework Support



Sample of items	Board approved \$
BeyondTrust Remote Desktop Support	\$32,520
Cisco VPN	\$39,700
DocuSign	\$21,167
Zoom licenses	\$131,750
Laptops with Docking Stations	\$1,999,220
Jabra Headsets	\$146,726
iPhones/Hotspots	\$29,000
Ergonomic Equipment	TBD

- Converting services to a remote or virtual format
- Overcoming residents' access barriers
  - Equipment access
  - Availability, quality, and cost of broadband services
  - Overcoming fear and unfamiliarity with online services