



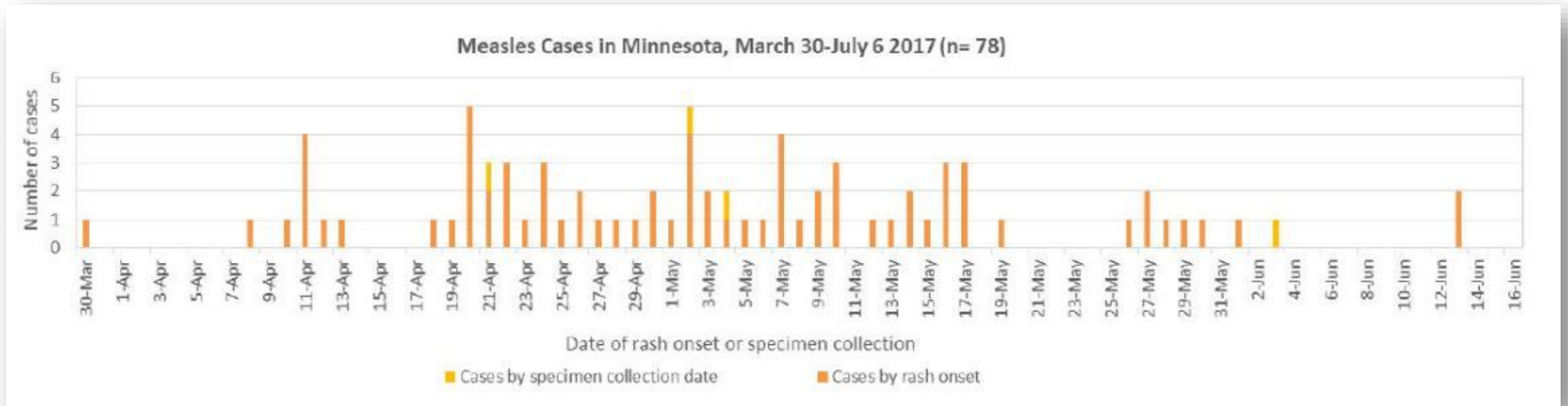
2017 Measles Outbreak

2017 Measles Outbreak

- First case confirmed April 11 in an unvaccinated 20-month-old with no travel history
- 79 cases statewide
- 90% of cases unvaccinated, 81% within the Somali MN Community
- 22 cases were hospitalized
- Close to 9,000 people exposed

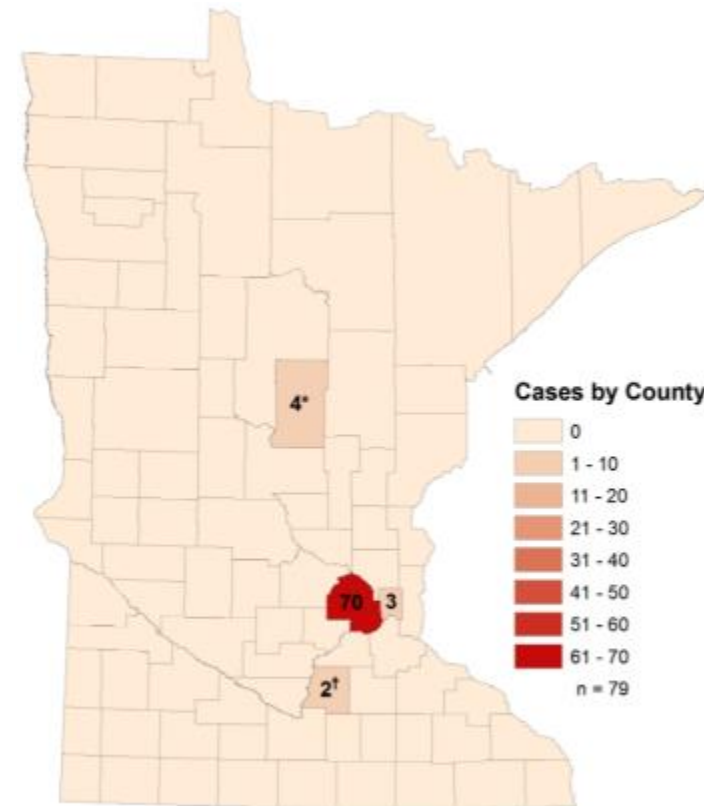
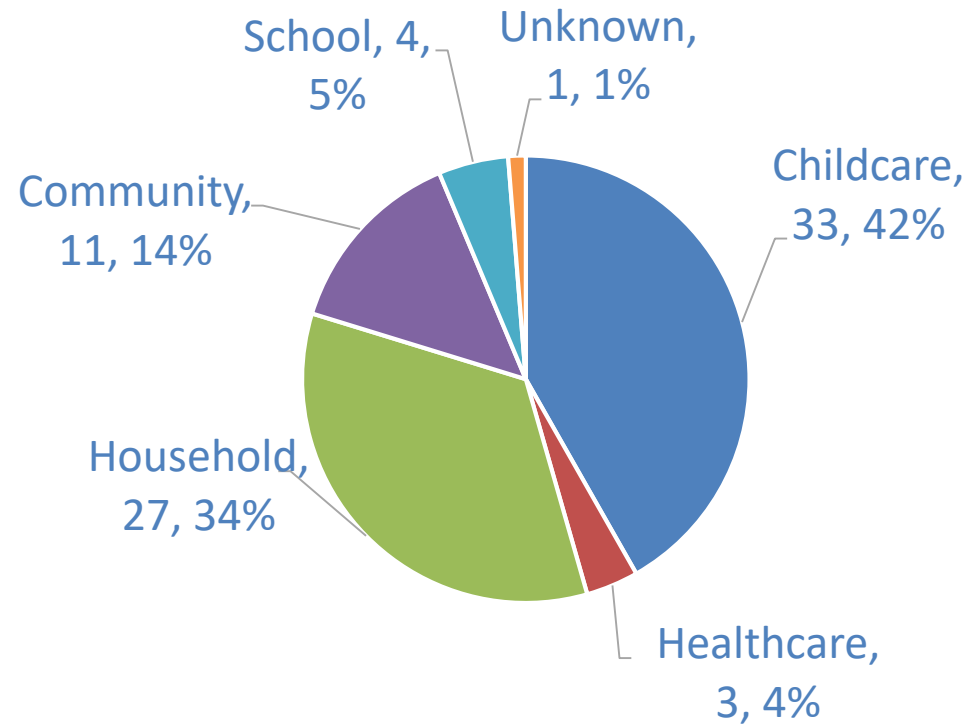
MMR status:		
	Unvaccinated:	71
	1 MMR:	3
	2 MMR:	3
	Unknown:	2
Race/Ethnicity:		
	Somali Minnesotan:	64
	White/Hispanic:	3
	White/NonHispanic:	11
	Black/NonHispanic:	1
	Unk/pending:	0
Age		
	Median	2 years
	Range	3 months-57 years
	Children (0-10 years)	73 (92% of cases)
	< 12 months	6
	1-4 years	54
	5- 10 years	13
	Adolescents (11-17 years)	1
	Adults (18+ years)	5

Timeline of case identification



Measles Cases: Exposure sites and counties affected

Measles cases by likely exposure site,
July 25 (N=79)



* = Index case was exposed in Hennepin Co. Additional cases were all within index case household.
† = All cases were exposed to Crow Wing index case.

Public Health Response

- Laboratory confirmation of measles diagnosis
- Identify exposed contacts
 - Sharing airspace
- Assess immunity of exposed contacts
 - Not immunized or never had measles disease
- Administer post-exposure prophylaxis to exposed, susceptible contacts
 - MMR within 72 hours or IG within 6 days of exposure
 - Priority high-risk contacts
- If too late to administer prophylaxis, exclusion and monitoring of exposed susceptible contacts





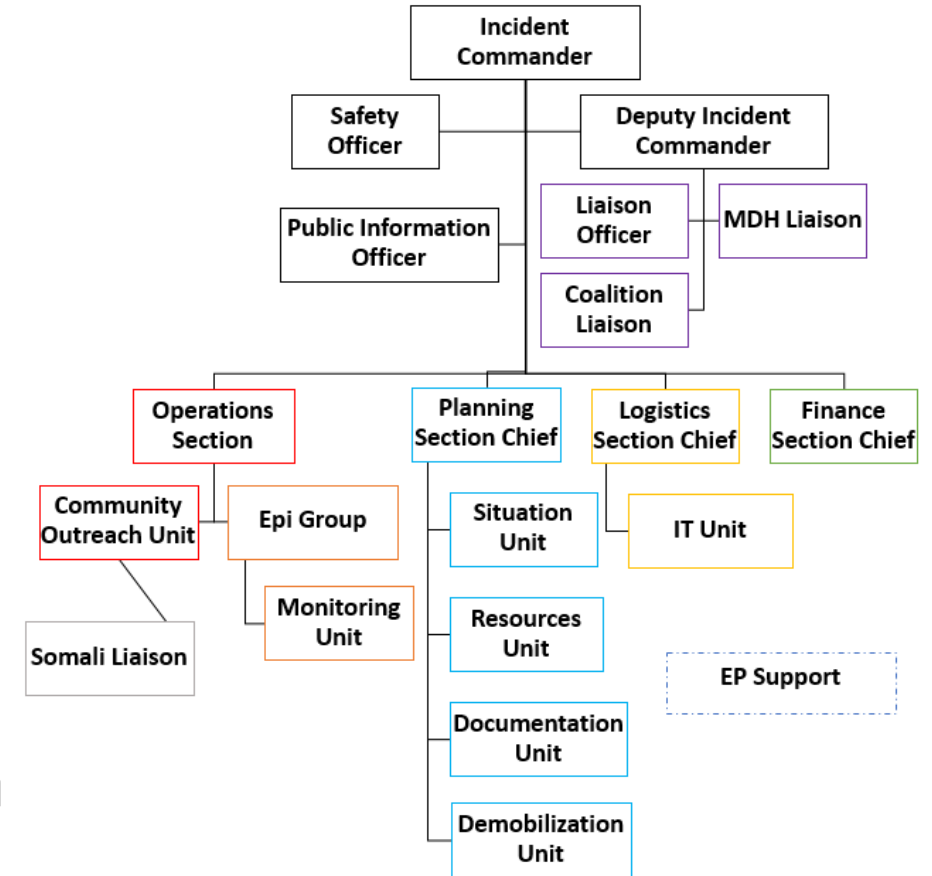
HENNEPIN COUNTY

MINNESOTA

Public Health

Coordinated Public Health Response

- State & County Health Department collaboration
- Incident Command
- Daily Command Briefings
- Staff-to-staff communication on daily work
- Coordination with healthcare through Hospital Compact

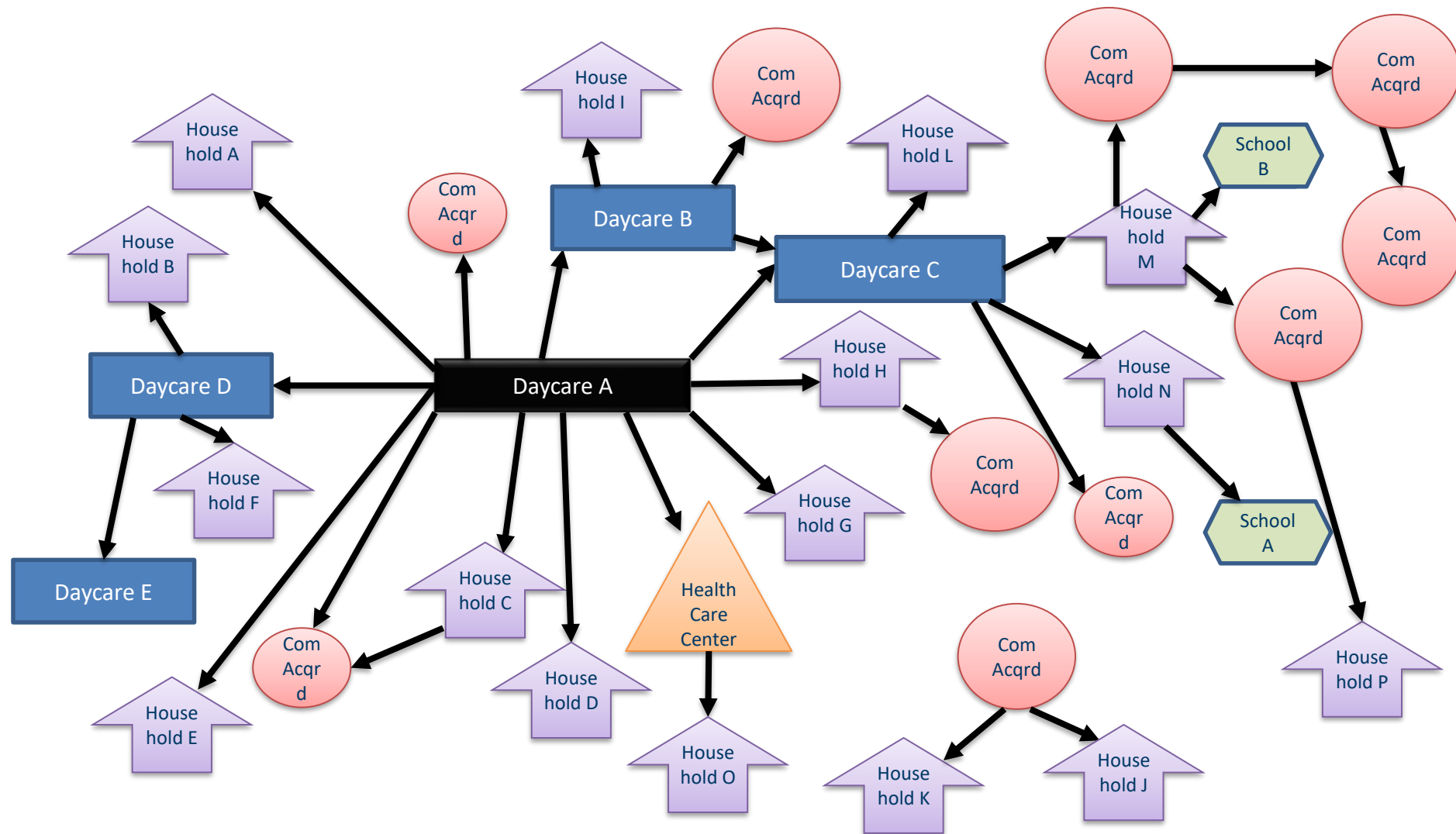


Exposures and Exclusions

- **Total health care and child care exposures: 8,800**
- **Schools involved : 4**
- **Child care centers involved : 12**
- **Total exclusions associated with this outbreak: 596**
 - Excluded from health care:66
 - Excluded from school/child care: 530
- **No legal action necessary**



It's Complicated!



Human Services: Essential Services



Community Outreach



Face-to-face,
one-on-one



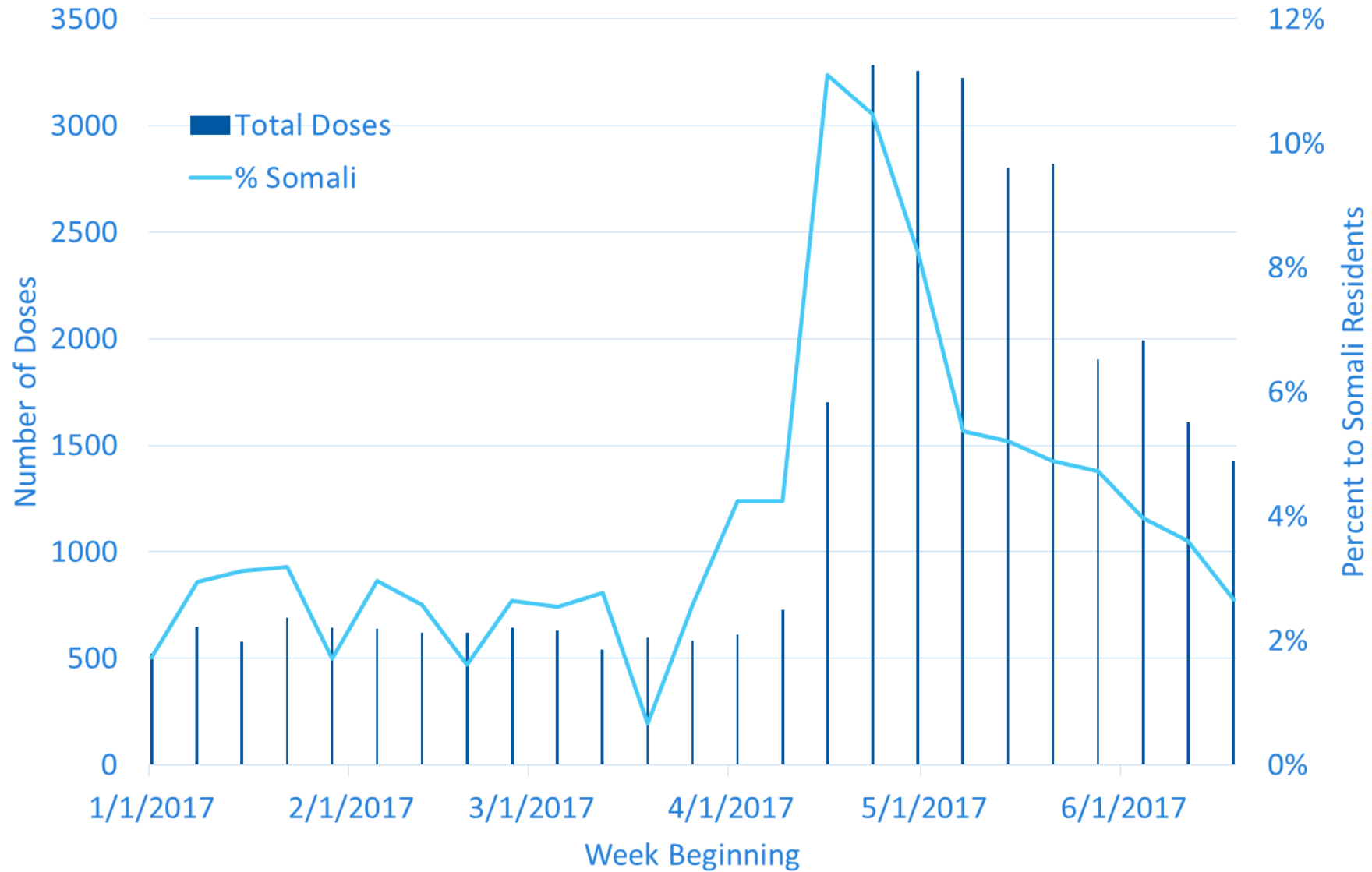
"About
immunization...not
immigration"



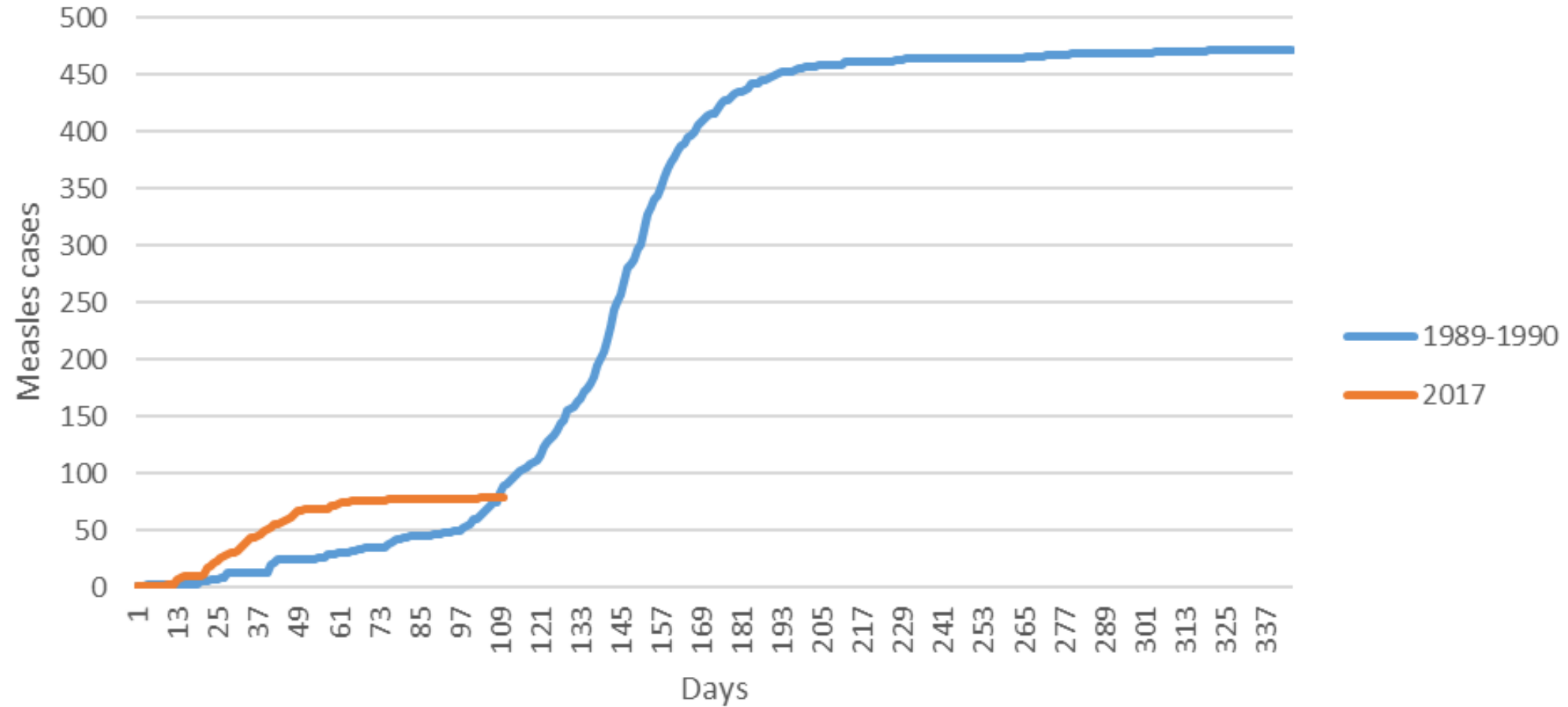
Media
attention



Vaccine Uptake



Measles cases over time, 1989-1990 vs 2017



Cost of Not Vaccinating

- **Public Health Costs:**
Hennepin County:
>\$397,000
- **MDH ~\$1mil.**
- **Local activities funded by
Property Tax/Local Public
Health dollars**
- **Other costs to healthcare,
schools, daycares, and
missed work time for
parents**



Susan Palchick

Susan.Palchick@Hennepin.us





Measles 2017: The Rural Response

Cindy Shaughnessy, Director
Le Sueur County Public Health

Le Sueur County: Who Are We?



Population 27,591

Race

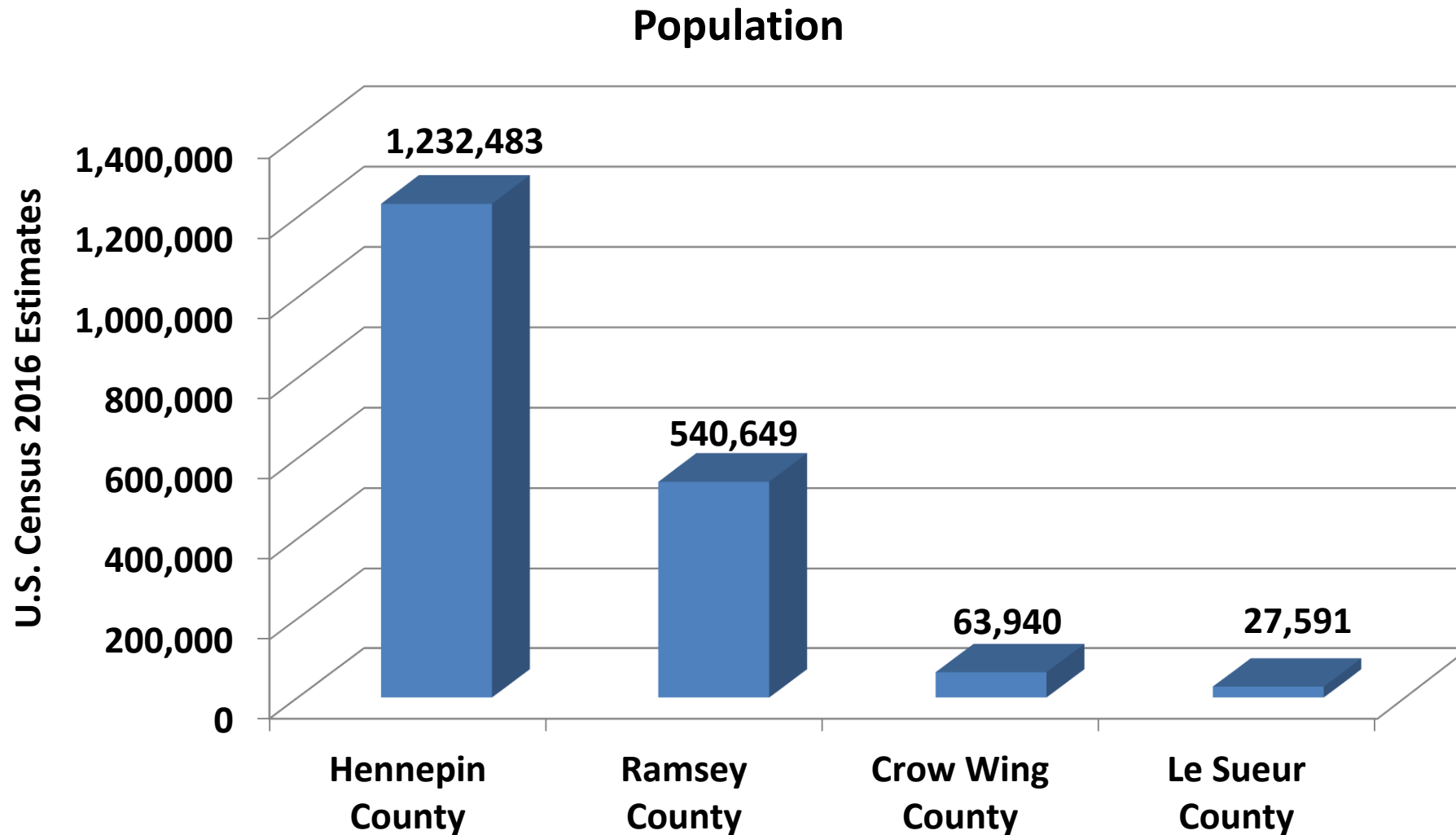
- White 96.9%
- Black/Afr. Am. 0.7%
- Asian 0.7%
- Am. Indian/Alaskan 0.5%
- Two or more races 1.2%

Hispanic/Latino 5.7%

Persons in Poverty 8.5%

Median Household Income \$60,632

Population of Counties with Measles Cases



A Closer Look.....

% Non-medical exemption to all vaccines

2015-2016 (Kindergartners)

Statewide	1.73%
Le Sueur County	1.20%
School A	0%
School B	0%
School C	1.92%
School D	6.45%

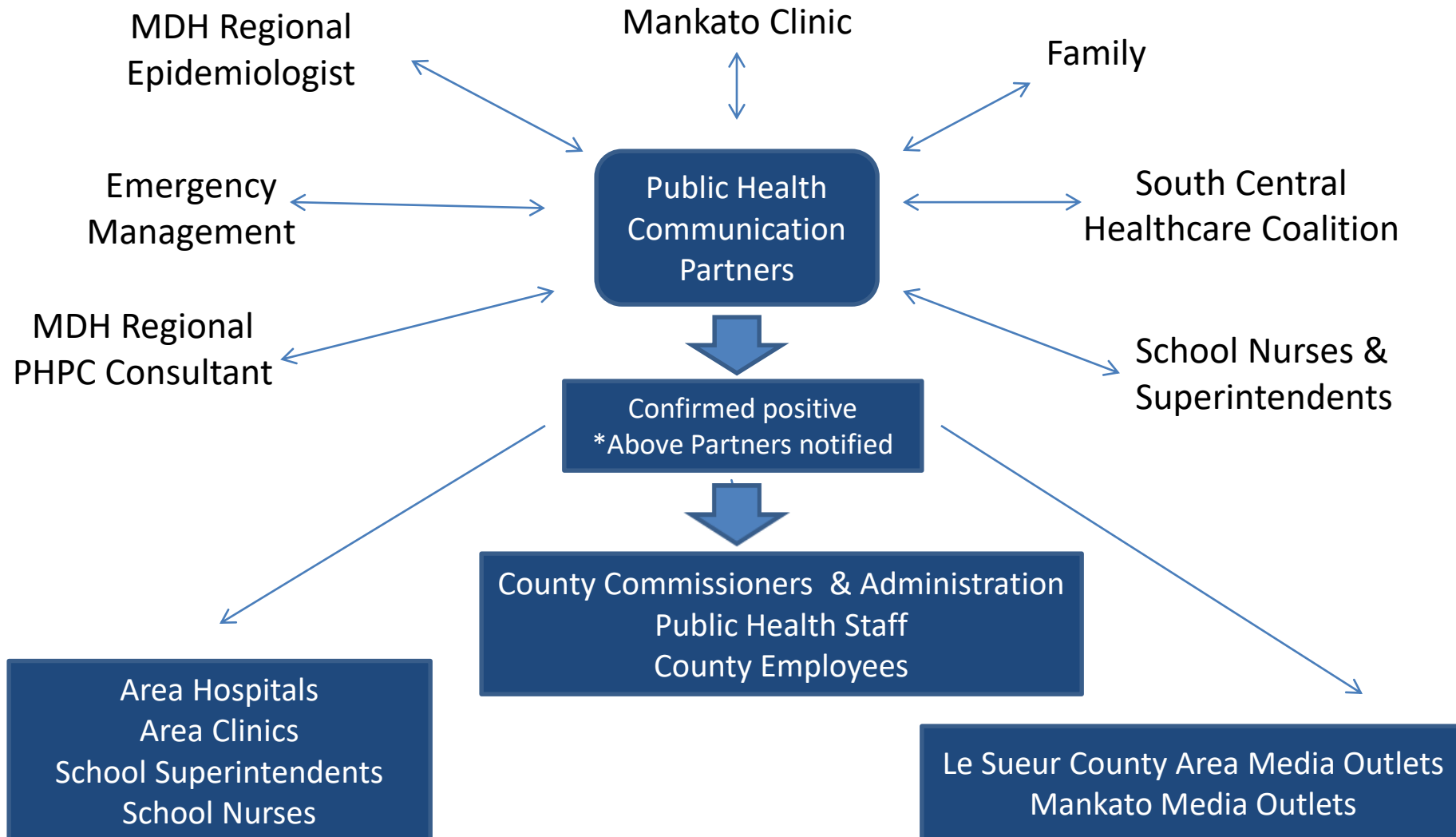
2 cases = 100+ hours Public Health Staff Time = \$6,893

*This does not include the time our partners spent
helping us with the response

The Timeline

05-01-17	Notification: 3 children possibly exposed
05-03-17	Exposure case (Crow Wing) confirmed positive
05-10-17	2 of the children are symptomatic. Testing done.
05-11-17	Conference Call with: Eric Weller, SC Healthcare Coalition , RHPC Administrator Kevin Burns, SC Healthcare Coalition, PIO Ryan Swafford, MDH Regional Epidemiologist & SC Healthcare Coalition Amy Smith, MDH PHPC & SC Healthcare Coalition Ann Traxler, Emergency Management Director Tammy Stewig, Deputy Emergency Management Pam Voit, Assistant Emergency Management & Public Health Accountant Kally Remiger, School Nurse Darlene Tuma, Public Health Supervisor Elisa O'Malley, Public Health Supervisor Cindy Shaughnessy, Public Health Director Megan Kirby, PHEP Coordinator
05-15-17	PH Notified that lab results were POSITIVE!

It's all about partnerships!



What Went Well?

- **Good working relationships** with partners
- **Strong**, involved & responsive SC Healthcare Coalition
- **Collaboration** in message development
- **MDH** morning conference calls with LPH
- **MDH responsiveness** to what rural MN needed
 - Added conference call specific for Coalitions
 - Added Le Sueur area rural hospital & clinic contacts for “Infection Preventionist” conference calls
- **Clear, consistent messages** released
- **Social Media for rumor control** –used EM Facebook page

Lessons Learned

- **Resources expand** using Healthcare Coalition
- **Update** contact lists regularly and often
- **Be prepared** – have the messaging ready to go
- **Use** the skills learned from PHEP
- **Enhance** the MDH EP and DP&C interface
- **Continue** Risk Communication training
- **Launch** the Public Health Facebook page
Accomplished September 2017!!

Contact information

Cindy Shaughnessy, Director

Le Sueur County Public Health

cshaughnessy@co.le-sueur.mn.us

phone 507-357-8246

webpage: www.co.le-sueur.mn.us

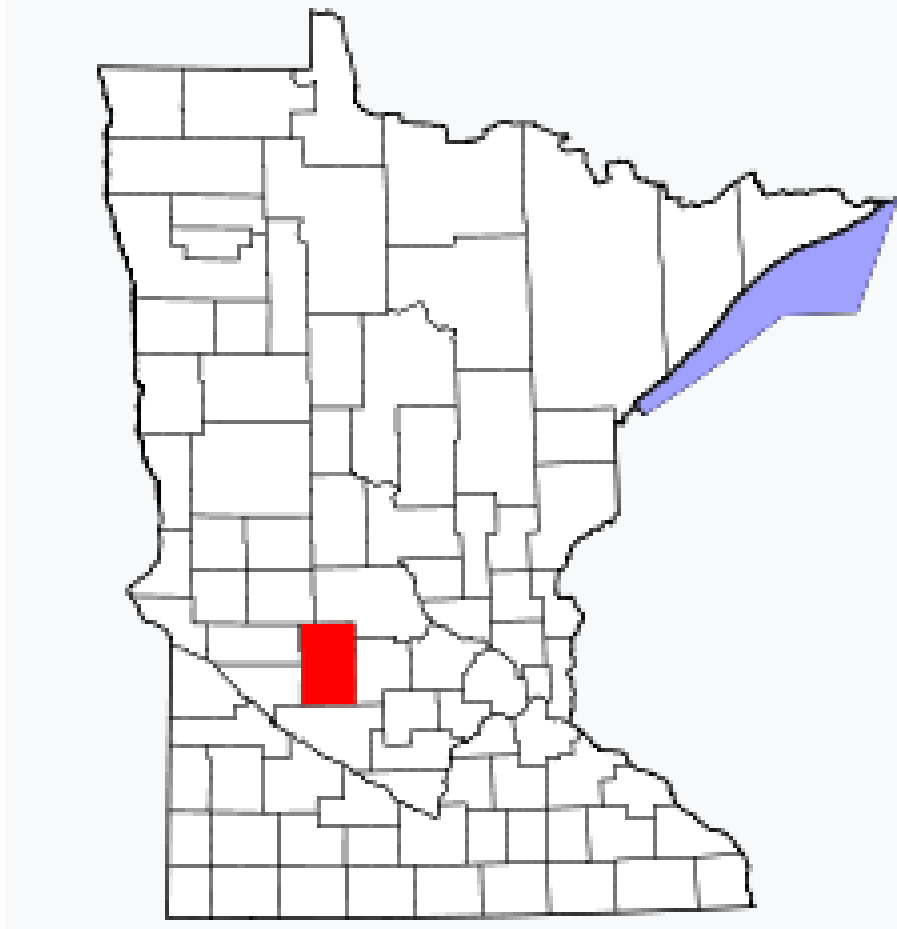


Le Sueur County Public Health

**2017
MEASLES OUTBREAK
RESPONSE**

**KANDIYOHI COUNTY
HEALTH AND HUMAN
SERVICES**

Kandiyohi County



2016

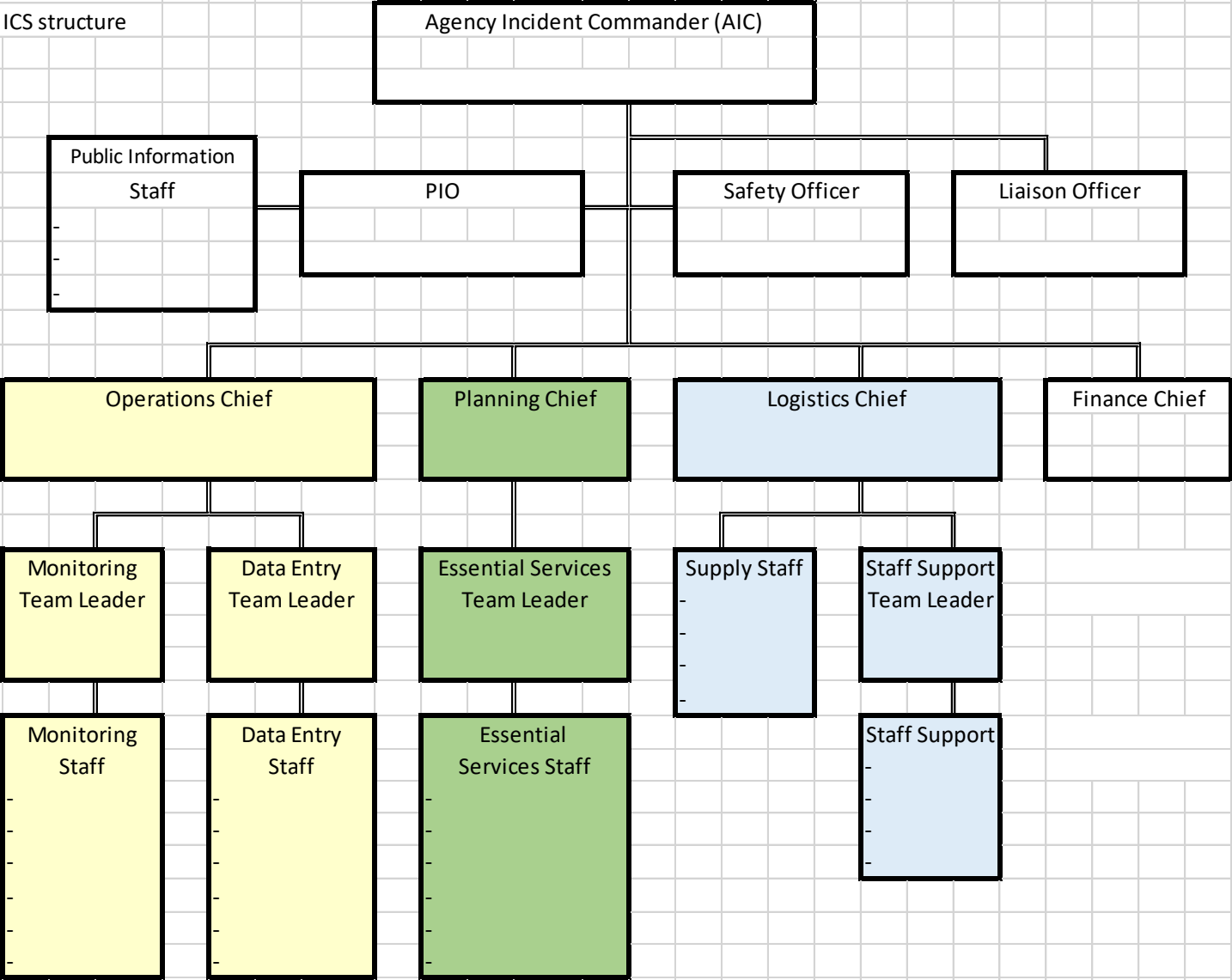
Population: 42,495

Demographics:

White alone (non-Hispanic)	81.6%
Hispanic or Latino	12.1%
Black/African American	5.1%

KCHHS-PH Isolation & Quarantine Command Structure

KCHHS-PH I&Q Annex
Appendix C: ICS structure



Date and Time Assigned: _____

AIC Signature: _____

April 27: Message to Media

Measles outbreak prompts vaccination message

Officials urge
parents to
check status of
immunizations

By Anne Polta
apolta@wctrib.com

WILLMAR — As a measles outbreak in Minnesota widens, Kandiyohi County health and emergency preparedness officials are urging parents to make sure their children are vaccinated.

As of Thursday afternoon, the Minnesota Department of Health had confirmed 28 cases in Hennepin County and one in Stearns County. All were among unvaccinated.

"Measles is very contagious and can spread very quickly," said Denise Kragenbring, public health supervisor with Kandiyohi County Public Health. "Families should check their immunization records to make sure they are protected and to get vaccinated if they are not, she said. 'The vaccine is safe and effective.'"

Because measles spreads among unvaccinated populations, it is especially important to protect children, health officials said.

The recommendation for Minnesota children older than 12 months is to get the MMR vaccine now. Those who have never had measles should get the vaccine now.

Those who have not received the MMR vaccine should get it now. Adults who have never had measles should get the vaccine now.

Those who have not received the MMR vaccine should get it now. Adults who have never had measles should get the vaccine now.

MEASLES

A2 Friday, April 28, 2017

MEASLES

From Page A1

Public Health at 320-231-7800.

The MMR vaccine is given in two doses. The first dose offers protection and the second dose adds an extra layer of security.

The Minnesota Department of Health recommends that children receive their first MMR vaccine at 12 months. Infants younger than 12 months may still have some maternal protection if their mother was vaccinated or previously had measles.

Local medical clinics have launched an outreach effort to identify children who have not yet been vaccinated and remind their parents of the need for shots. This will be followed by a second wave of reminders targeting children who have received only one dose of the MMR vaccine, Kragenbring said.

Word of the measles outbreak appears to be getting out, said Lyle Loge of Affiliated Community Medical Centers.

"We've had some people come in already," he said Thursday.

Of the 29 cases that have been confirmed in Minnesota so far, 25 were Somali Minnesota children.

State officials have emphasized several times that the outbreak is not about specific communities. "This is about unvaccinated children," Dr. Ed Ehlinger, Minnesota Health Commissioner, said earlier this week.

But because so many of the current cases are among Somali children, the Minnesota Department of Health is recommending that all Somali Minne-



Photos by Briana Sanchez / Tribune

Denise Kragenbring, public health supervisor with Kandiyohi County Public Health, talks Thursday about the importance of measles vaccination during a meeting with the Tribune at the Kandiyohi County Health and Human Services Building in Willmar.



Public health nurse Deb Floren shows a vial of the measles vaccine Thursday at the Kandiyohi County Health and Human Services Building in Willmar.

sotan children statewide who have already received their first dose of the

MMR vaccine should get the second dose now.

The department's vaccine recommendations may expand if the measles outbreak spreads to more communities.

Symptoms of measles include a high fever, cough, runny nose, watery eyes and a rash that spreads from the head to the rest of the body.

Local medical clinics are asking parents who think their child may have measles to call their doctor first, rather than bringing the child to the clinic and potentially exposing others.

Children with symptoms that might be measles also should be kept home from school and day care.

Before the introduction of the measles vaccine in 1963, 450 to 500 children in the U.S. died from the

disease and 48,000 were hospitalized each year, according to the Centers for Disease Control and Prevention.

The effectiveness of the MMR vaccine has greatly reduced the incidence of measles in the United States but the disease is still common in other parts of the world.

Outbreaks occur periodically in the U.S. when travelers bring in the disease, which then can spread when it reaches unvaccinated communities.

One of the largest outbreaks in recent years occurred in 2015. It was linked to two Disney theme parks in California and involved 147 cases in seven states.

Outreach to Area Providers and to Community

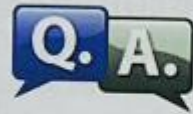
- Local response
 - Utilizing MIIC reports, we identified those children 12-16 months old in our county that had no record of receiving a MMR. Area clinics were given those initial lists to begin outreach.
 - Collaborated with Southern Prairie Community Care and utilized their Somali Liaison to assist with outreach calls.
- Regional MIIC Response
 - All clinics received No MMR lists for 12-48 month old children and overall MMR rates for children 1 to 18 years.

Jadeecada



Kandiyohi County
Health and Human Services
<http://www.co.kandiyohi.mn.us>

Sarampión



Kandiyohi County
Health and Human Services
<http://www.co.kandiyohi.mn.us>

Measles



Kandiyohi County
Health and Human Services
<http://www.co.kandiyohi.mn.us>

Waa maxay calaamadaha jadeecadu?

Firiiric IYO

Qandho IYO

Qufac AMA
sanka oo duuf
ka dareero
AMA indhaha
oo ilmeeya/
cuncuna



Source: Centers for Disease Control and Prevention

Sidee bay halis u tahay jadeecadu?

Jadeecadu waxay noqon kartaa cudur halis ah oo keena in isbitaal aad u jirsado ama xitaa dhimasho keeni karta.

Siday ku fidaa jadeecadu?

Jadeecadu waxay naadhaa hawada marka qofka qabaa neefsado ama qufaco. Aad ayuu loo kala qaadaa. Ma qaadi kartid jadeeco hal mar wax ka badan, waayo markaad qaado waxay ku hadhaysaa difaaca jidjakaaga.

Intee in le'eg ayuu qofka qaba jadeecada wax qaadiin karaa?

Qofka qaba jadeeco waxu u gudbin kara dadka kale laga bilaabo adaf maalmood kahor firiirka soo bixitaankooda iyo afar maalmood kadib.

¿Cuáles son los síntomas del sarampión?

Erupción cutánea Y

Fiebre Y

Tos O secreción
nasal U ojos
llorosos/con
secreciones



Source: Centers for Disease Control and Prevention

disease that can lead to hospitalization and even death.

¿Cómo se transmite el sarampión?

El sarampión se transmite a través del aire cuando las personas que lo padecen respiran y tosen. Es muy contagioso. No puede cogerse de sarampión ni una vez, debido a que la inmunidad a la enfermedad llega al padecerla.

¿Durante cuánto es contagioso el sarampión?

Una persona con sarampión puede ser contagiosa desde el momento en que aparecen los síntomas hasta 4 días después de que desaparecen.

What are the symptoms of measles?

Rash AND

Fever AND

Cough OR
runny nose OR
watery/
mattering
eyes



Source: Centers for Disease Control and Prevention

How serious is measles?

Measles can be a serious disease that can lead to hospitalization and even death.

How does measles spread?

Measles is spread through the air when someone with measles breathes or coughs. It is highly contagious. You cannot get measles more than once, because after you have had it you are immune.

How long is a person with measles contagious?

A person with measles can pass it on to others from 4 days before their rash appears to 4 days after it appears.

JADEECADA

Sidee bay halis u tahay jadeecadu?

Jadeecadu waxay noqon kartaa cudur halis ah oo keena in isbitaal aad u jilfsado ama xitaa dhimasho keeni karta.

Siday ku fidaa jadeecadu?

Jadeecadu waxay raacdaa hawada marka qofka qabaa neefsado ama qufaco. Aad ayuu loo kala qaadaa. Ma qaadi kartid jadeeco hal mar wax ka badan, waayo markaad qaado waxay ku hadhaysaa difaaca jidjkaaga.

Intee in le'eg ayuu qofka qaba jadeecada wax qaadsiin karaa?

Qofka qaba jadeeco wuxu u gudbin kara dadka kale laga bilaabo adaf maalmood kahor finianka soo bixitaankooda iyo afar maalmood kadib.



Waa maxay calaamadaha jadeecadu?

- ✓ Firiiric IYO
- ✓ Qandho IYO
- ✓ Qufac AMA sanko oo duuf ka dareero AMA indhaha oo ilmeeya/cuncuna



Maxaan sammeeyaa??

1. Sug calaamadan jadeecada

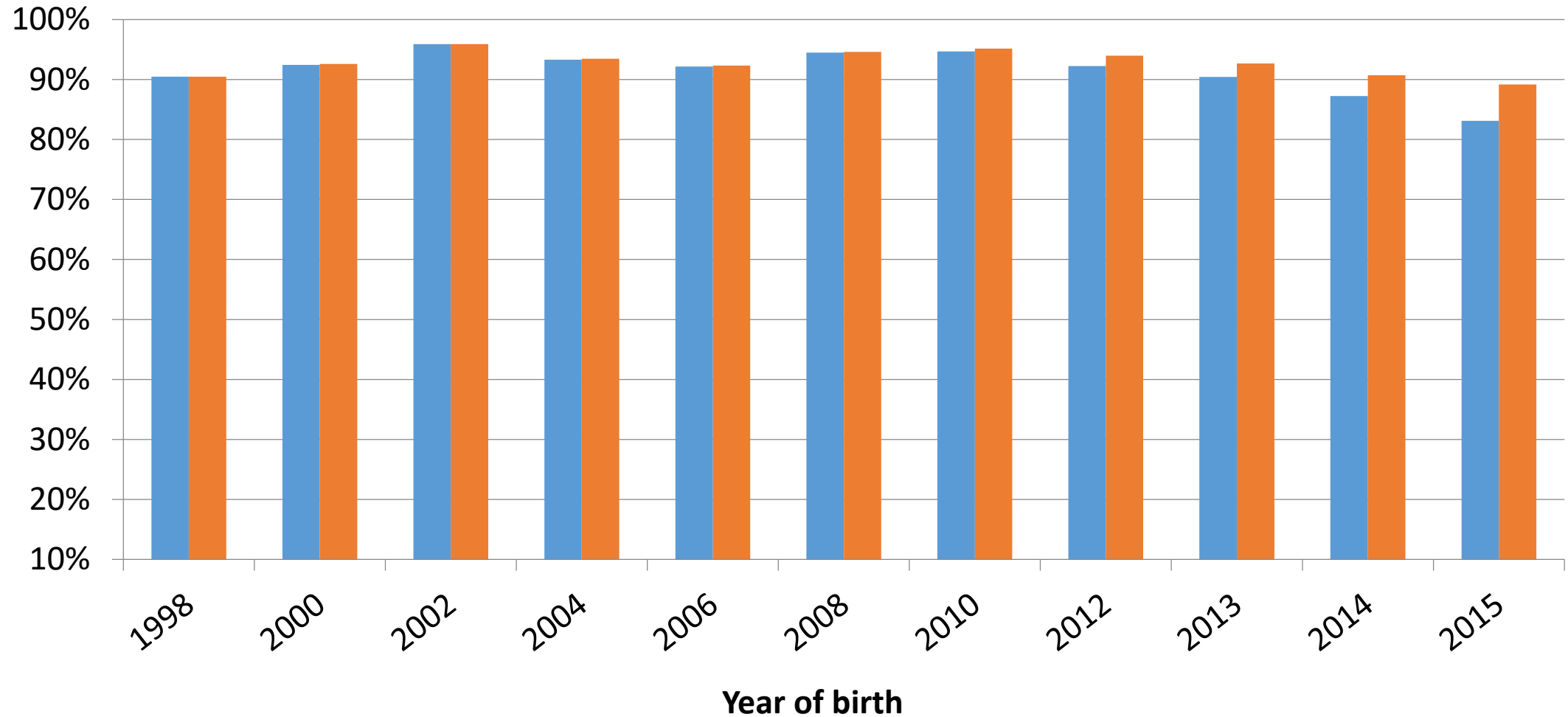
2. Wac Dhakhtarkaaga ama rugta caafimaadka isla markiiba firgooyiin midig haddii aad aragto sysmtoms. Hubi Inaad joogto gurigaaga oo martida iska ilaali illaa aad dhakhtar la hadlayso ama rug caafimaad.

Dhakhtarkaaga ama rugta caafimaadka ayaa kuu sheegi doona haddii aad u iman karto.

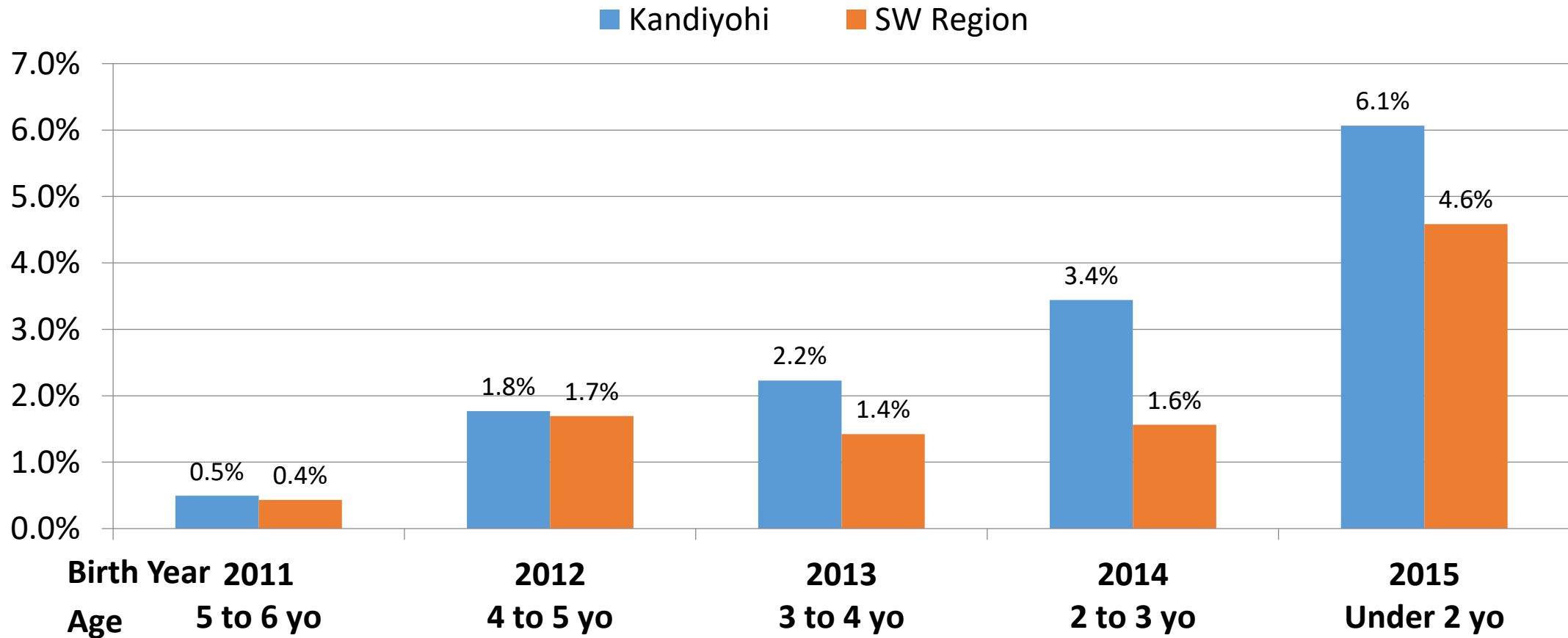
3. Qof walba heli tallaalo si ay u ilaaliyaan ka dhanka ah jedeedecada. Tallaalka Jedeedecada waa amman ah oo wax Ku oo ah.

Kandiyohi County Children with at least 1 MMR

■ 5/1/2017 ■ 11/14/2017



Increase in 1 MMR Coverage by Birth Year May to November, 2017

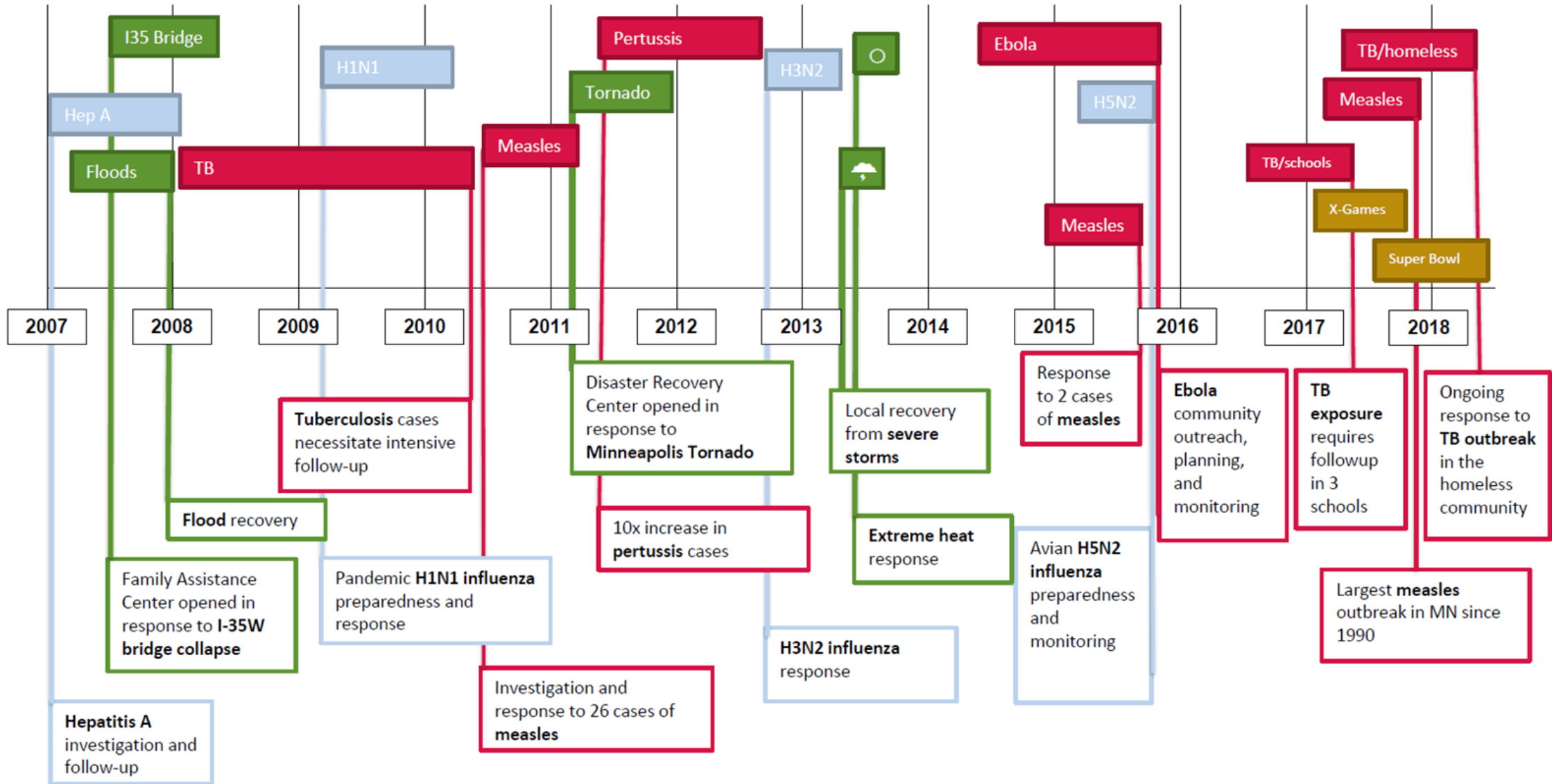




HENNEPIN COUNTY
MINNESOTA

Commissioner Linda Higgins

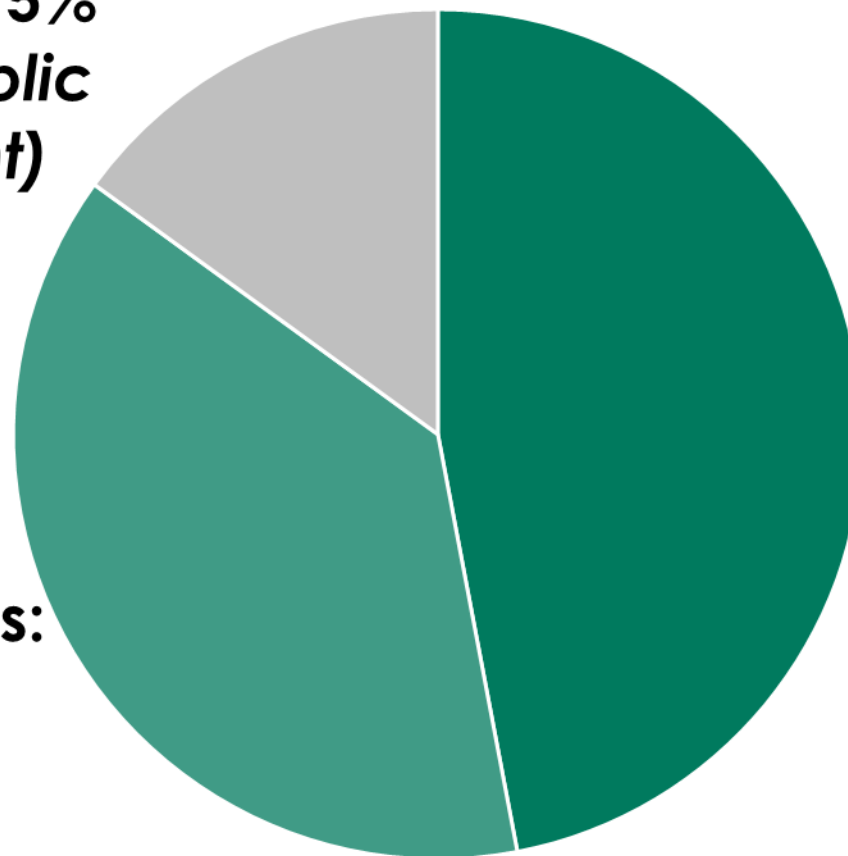
Hennepin Response Timeline



MINNESOTA COMMUNITY HEALTH BOARD FUNDING, 2016

State Funds: 15%
*(6% Local Public
Health Grant)*

**Federal Funds:
38%**



**Locally-Generated
Funds: 47%**
(32% local levies)

Questions?



Public Health
Prevent. Promote. Protect.