

Reframing Public Health: Strengthening Minnesota's State- County Partnership

Sheila Kiscaden, Commissioner and
SCHSAC Chair, Olmsted County

Tarryl Clark, Commissioner and
SCHSAC Vice Chair, Stearns County

Sarah Reese, Public Health Director at Polk
County and CHS Administrator for Polk-
Norman-Mahnomen CHB

Chelsie Huntley, Community Health Division
Director, Minnesota Department of Health

Instructions

Go to
www.menti.com


Enter the code



Or use QR code



Context and History

- **Current structure of the system established in 1970s, and largely not revisited since.**
 - **Over time, eroding funding, emerging health threats, widening health inequities, workforce challenges, new technology, data analysis changes, and the need for new skills and capabilities has left Minnesota communities at risk.**
 - **Widely varying public health capacity across the state of Minnesota.**
- 

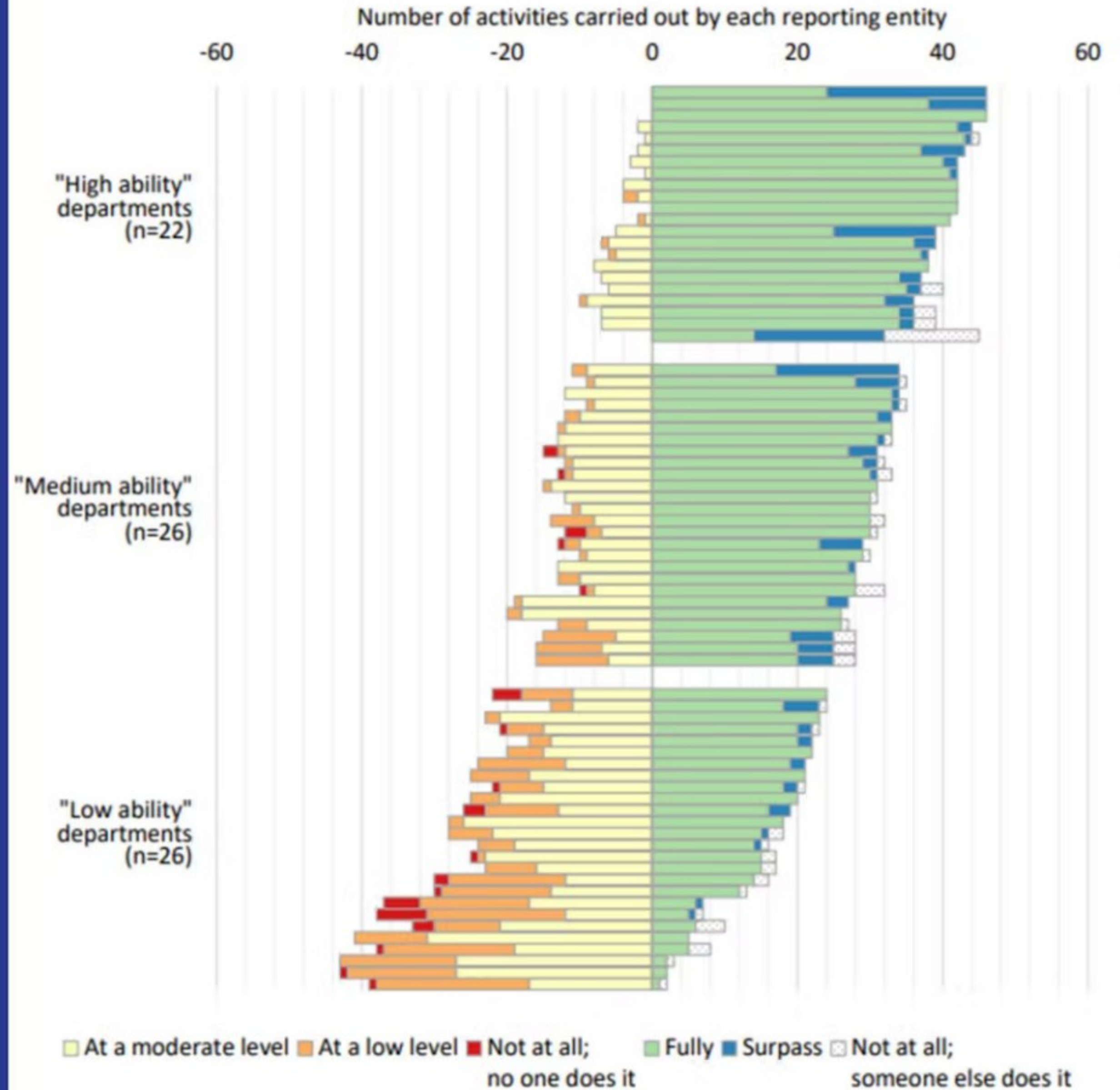
What is SCHSAC?

“A state community health advisory committee is established to advise, consult with, and make recommendations to the commissioner on the development, maintenance, funding, and evaluation of community health services.”

– Minn. Stat. § 145A

The capacity of Minnesota's local health departments varies across the state.

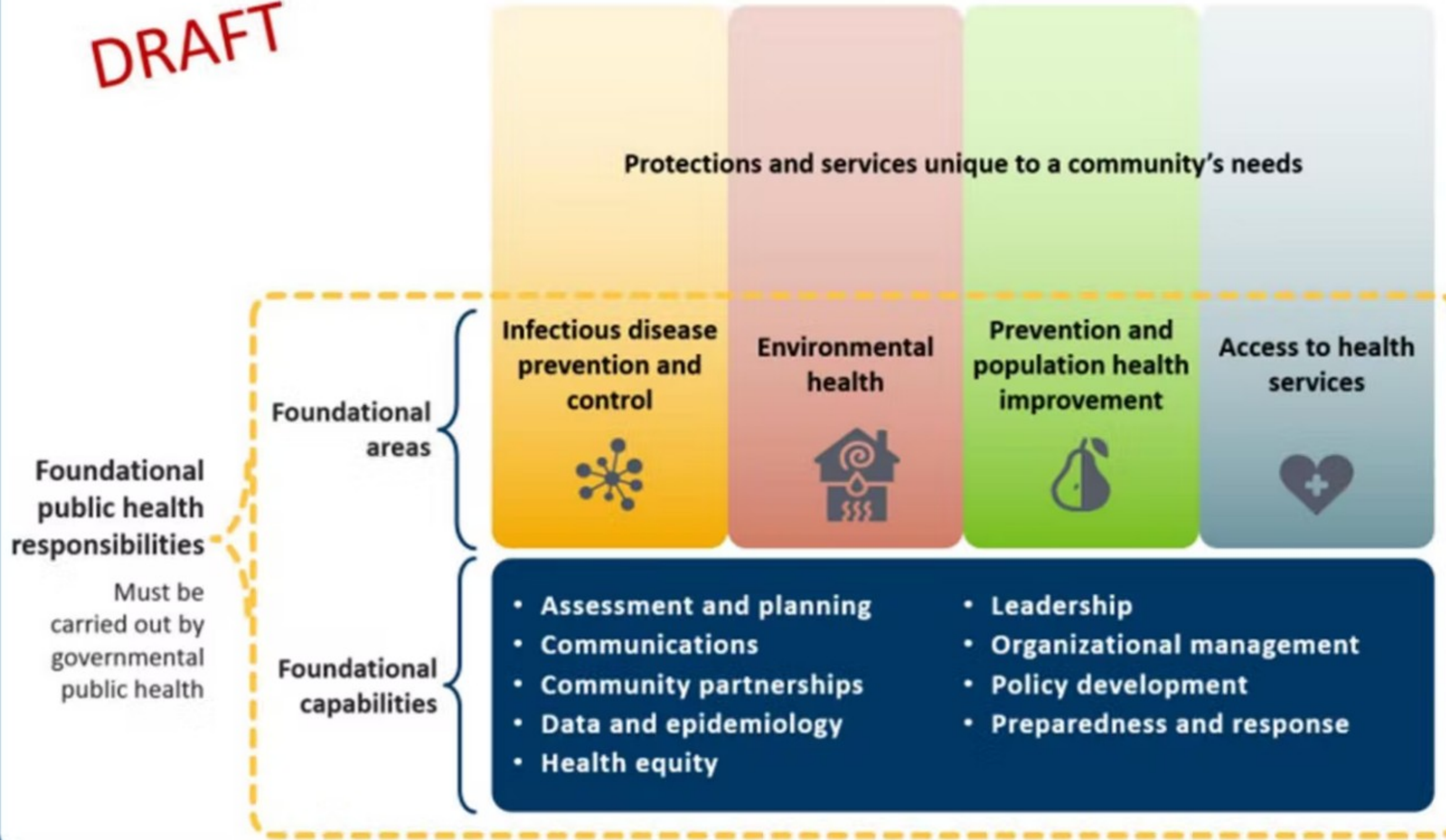
Figure 1. Required local public health activities in Minnesota, as carried out by 74 local health departments




A Framework for Governmental Public Health in Minnesota

Creating Healthy Communities

DRAFT



Goals of 21st Century Public Health in MN

- Stronger together
 - Building a structure to share power and decision making
 - Build capacity and improve performance of Minnesota's state, local and tribal governmental public health system
 - Create an equitable system so all Minnesotans have access to a strong base of public health services in their community
- 

A Call to Engage in Co-Creation for our Future

- Once in a generation opportunity for state and local government to co-design the structure that will carry us into the future - we are inviting you to join this process for better health outcomes for every community
- Joint leadership team made up of local public health, SCHSAC, and MDH leaders (Tribal process moving on a parallel track)
- Sub-groups formed to create opportunities for wider engagement
 - Data modernization
 - Communications
 - System Assessment (Policies and Community)

Funding for Infrastructure and Innovation Projects

- Infrastructure fund project awards
 - 16 projects funded for 2 years (with extension possible)
 - Funded through \$6 million/year appropriation in the base
- **NEWS!** Limited statewide federal funding awarded to support public health workforce needs



Cost & Capacity Assessment

- Local public health agencies across the state and MDH completed an in-depth assessment of the current capacity of public health services in Minnesota and the cost to fully deliver those services in MN.
- UMN working to compile data, full report anticipated late spring.
- Data gathered will inform legislative and funding requests.

Redefining the Role of Public Health



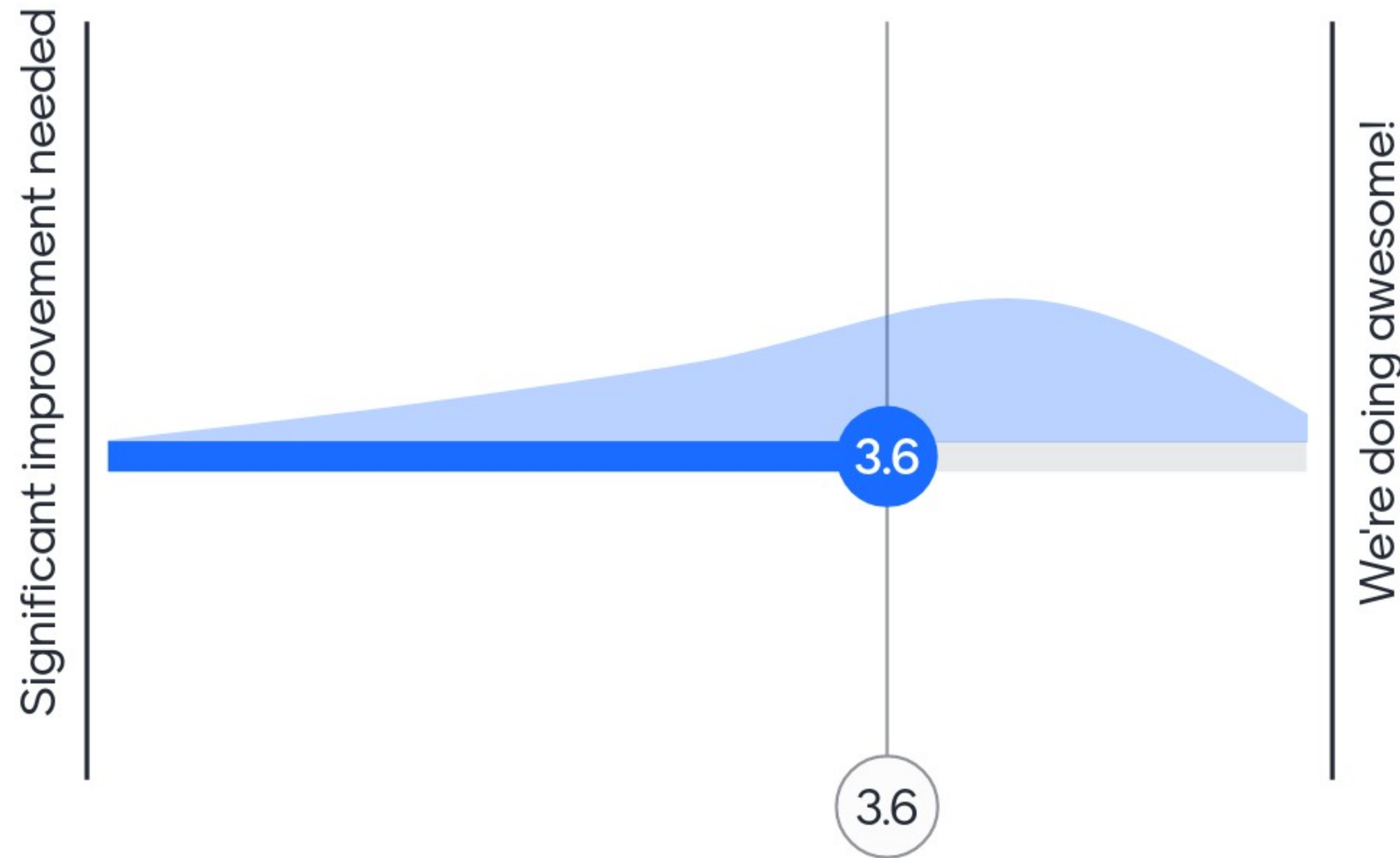
Diagnose

Public health experts diagnose the health of each community by listening to people who live there—and then use data, evidence, and research to offer solutions.

“GPS is a powerful tool for visualizing and navigating complex terrain. Public health professionals serve this function too. Public Health draws on a wealth of data to chart out routes from where we are in terms of our health as a community to where we want to be. Most of all, Public Health puts data expertise to work to drive positive outcomes and move needed solutions forward.”

- PHRASES - Public Health Reaching Across Sectors

How well is local public health doing in your community at diagnosing the health of your community?

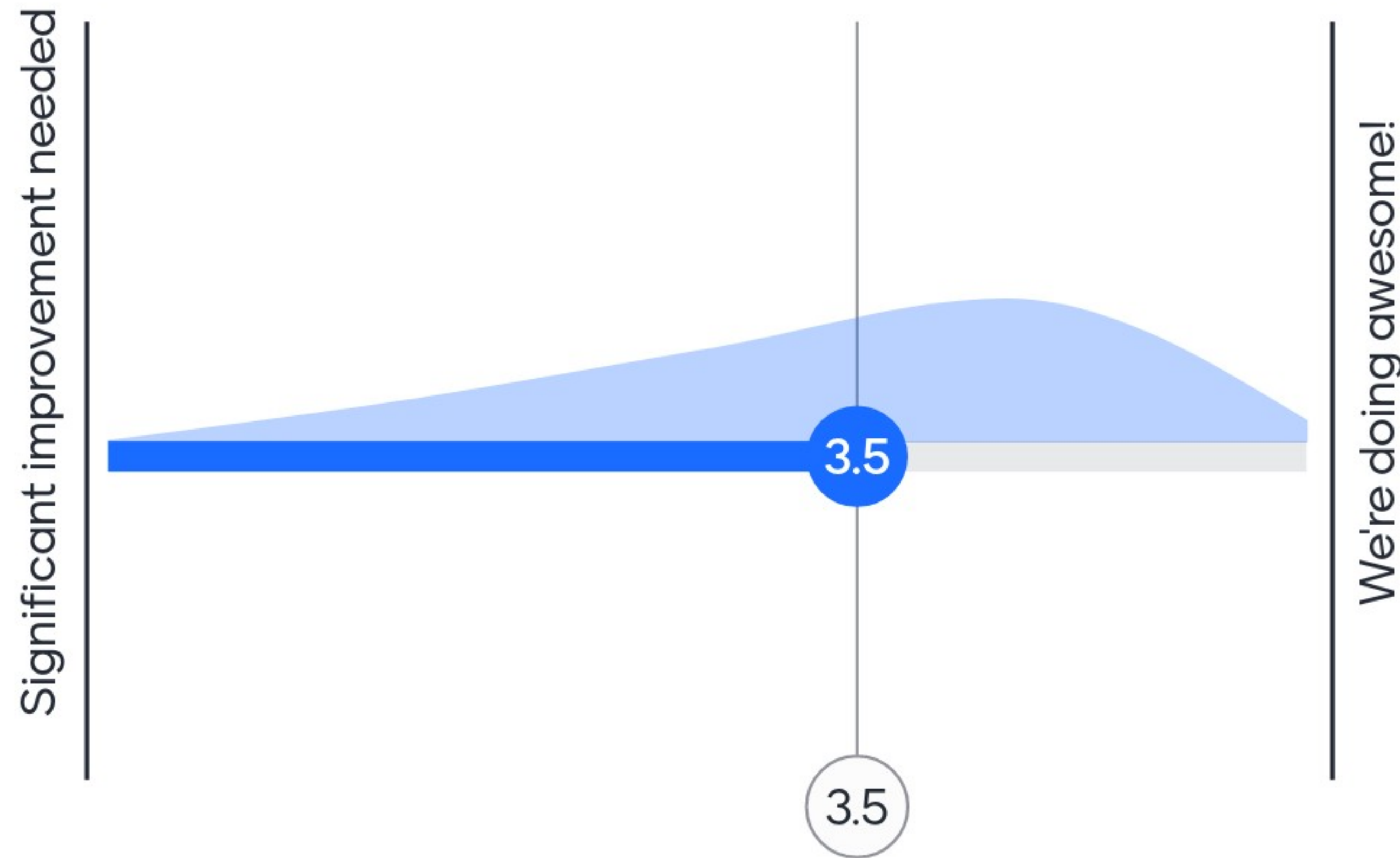




Cooperate

To improve the health of the community, different organizations have to work together—schools, businesses, government agencies, and more. Public health brings them together to make decisions and take action.

How well is local public health doing in your community at bringing people together to take action?

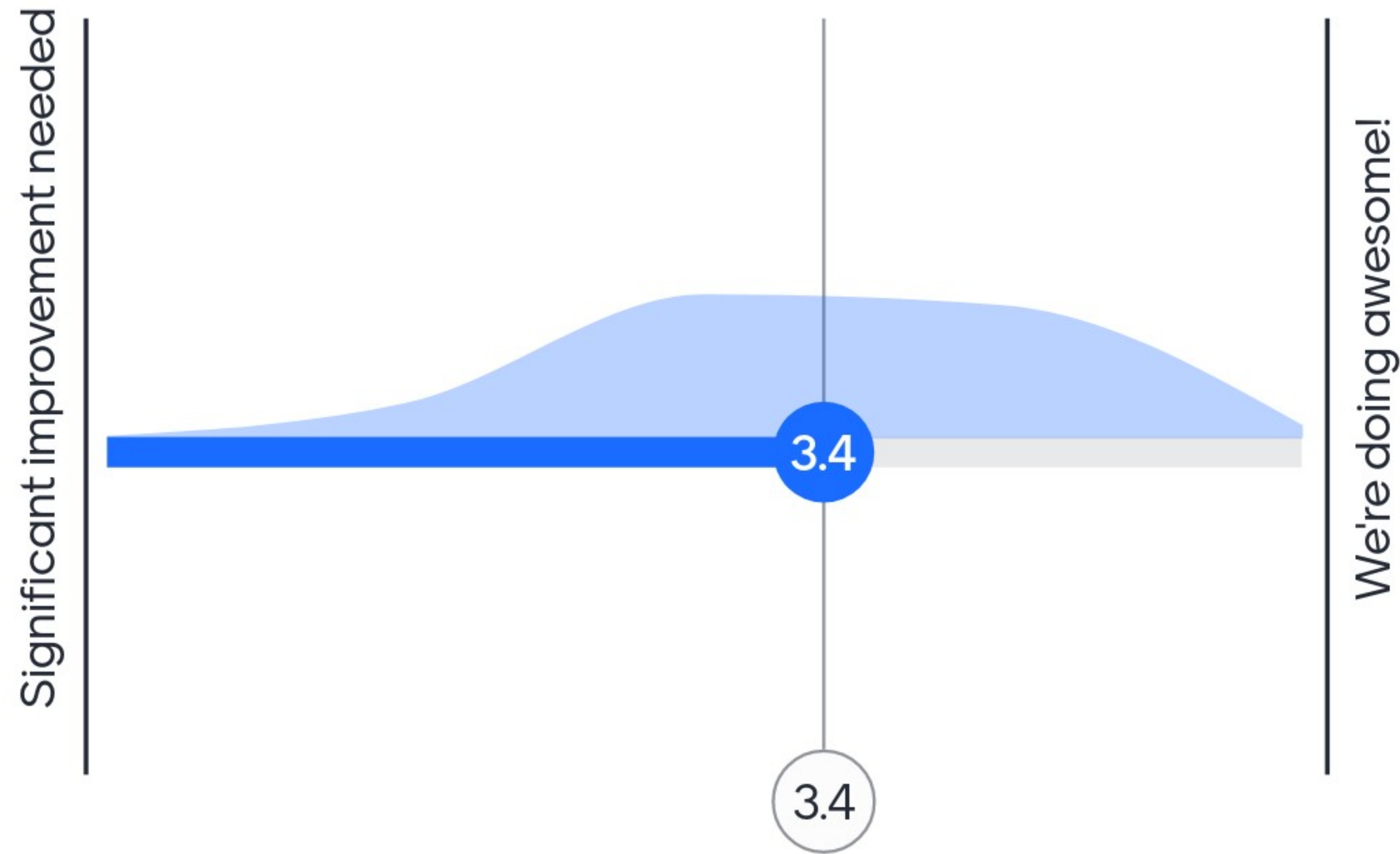




Prevent

We often end up in the doctor's office after we're sick or injured. Public health experts investigate everything that affects our health—food, water, air and more—to prevent health problems before they start.

How well is local public health doing in your community at preventing health problems before they start?



Discussion Question and follow-up when you get home:

- What three questions are you going to ask your local public health director?
- What are three things you want your health director to know about connections you have in the community?

How will you apply what you've learned today? (i.e. Join SCHSAC, Meet with my LPH Director, Serve on my Community Health Board)

Get on SCHAC

Meet with our dirextor

On SCHSAC

Serve on local health board and public health policy with AMC

Put PH in our Legislative priorities

Meet with new public health director

What are our biggest unmet needs?

More meetings to discuss our public outreach.

I will chair our CHB in 2023.Join Schsac

How will you apply what you've learned today? (i.e. Join SCHSAC, Meet with my LPH Director, Serve on my Community Health Board)

Regular meeting with PH Director

Meet with director

Hope to be to be vice chair.

Encourage the participation of SCHSC.

Have more meetings to with our public health director to better understand their needs.

Will meet with our new director and bring her with to SCHSAC

Meet with my LPH director

Give a commissioner committee assignment list to my public health director

Be more active with Public Health.

How will you apply what you've learned today? (i.e. Join SCHSAC, Meet with my LPH Director, Serve on my Community Health Board)

What worries you most about our population...where is the evidence of disparities?

Continue working with our public health employees seeking ways to help them

Help to connect my community organizations with our Public Health Department

Tour our homeless shelter.

get more commissioners involved in SCHSAC

Make sure they're budgeted enough to supply services that are needed.

Seek leadership opportunities on CHB and SCHSAC

Meet with the Public Health Director

Do a ride along

How will you apply what you've learned today? (i.e. Join SCHSAC, Meet with my LPH Director, Serve on my Community Health Board)

Joining are health team on visits.

Coalition to get more available dental care

Make sure my board has a better understanding of why public health is so important in our county

Organize a NEMT service for our seniors that are in need of treatments that are an average of seventy miles from Kittson county, such as chemo or dialysis

Ask what are the priorities of her job?

Tell director Thank You for your work

Challenge people to think bigger and broader about Public Health. For example, Cost of health care. 33% of people are over 65. A good portion of them are low-income; Medicare does cover Cost of pharmaceuticals and care that extend quality life.

Share SCHSAC updates with PH Advisory Committee

Thank you!

Questions or
Comments?