

**Pasco County Metropolitan Planning Organization
Task Order No. MPO12-02**

**SCOPE OF SERVICES
Pasco County Public Transportation (PCPT)
TRANSIT & SIDEWALK INFRASTRUCTURE PLANNING SERVICES**

March 2, 2012

A. TASK OBJECTIVE DESCRIPTION

Background

Pursuant to the December 8, 2011, agreement between the Pasco County Metropolitan Organization (MPO) and Tindale-Oliver & Associates, Inc. (TOA) for services as its general planning consultant, and pursuant to the request from the Pasco County Metropolitan Planning Organization (MPO) and Pasco County Public Transportation (PCPT) staff, TOA prepared this Scope of Services to provide transit and sidewalk infrastructure planning services.

Overview

Pasco County MPO and PCPT staff initiated several transit and pedestrian infrastructure planning initiatives and requested that TOA prepare this scope of work to detail the approach associated with conducting these initiatives. Pasco County currently has an inventory of bus stops, bus transfer facilities, park-and-ride facilities, and related transit infrastructure to support its public transit services. The MPO and PCPT are undertaking a phased approach to upgrade facilities in accordance with current federal and state accessibility regulations. Part of Pasco County's vision for improving its overall service is to provide enhanced transit infrastructure and amenities for passengers, including more shelters and benches. This effort includes an update to the PCPT transit infrastructure manual to include a chapter on park-and-ride design standards and placement criteria. A conceptual vision for future park-and-ride facilities will be developed for Pasco County and PCPT to use in support of the development and site plan review process.

In addition, Pasco County would like to review gaps in sidewalks on east/west arterials/collectors that intersect with US 19 and US 301 (up to ½-mile from US 19) to identify and prioritize potential sidewalk projects. Figures 1 and 2 at the conclusion of this Scope illustrate the half-mile buffer around US 19 and US 301, respectively, and highlight the arterials/collectors that will be evaluated for sidewalk improvements.

The use of design and construction standards that reflect full compliance with federal, state, and local accessibility and building standards is paramount to the County's goal to provide accessible services. This process is ongoing, and the County would like to ensure that the implementation will continue to result in the placement of bus stops and supporting transit services infrastructure that meet all layout, design, and accessibility requirements of the Americans with Disabilities Act (ADA) and the Florida Accessibility Code (FAC).

Purpose and Objectives

The purpose and objectives of this Scope of Services are as follows:

- Develop a conceptual vision for the location of future park-and-ride facilities to be used in the development and site plan review process.
- Update the PCPT transit infrastructure manual to include a chapter on park-and-ride design standards and placement criteria.
- Assess the availability of accessible paths to bus stops on Routes 19 and 30 and develop a capital improvement program for improving access to these bus stops.
- Identify sidewalk and crosswalk gaps on east/west arterials/collectors that intersect with US 19 and US 301 (up to ½-mile from the length of US 19 in Pasco County and US 301 within the City limits of Dade City and Zephyrhills).
- Identify potential sidewalk and crosswalk projects, analyze constructability, develop estimates of probable costs, and prioritize potential projects for implementation.
- Provide additional transit and sidewalk infrastructure planning support services to the MPO and PCPT on an as-requested basis (meetings, presentations, workshops, training, site reviews, etc.).

B. SCOPE OF SERVICES

The project is organized into four major tasks as summarized below and documented in the remainder of this Scope of Services.

- **Task 1: Develop a conceptual vision for future park-and-ride facilities and update the transit infrastructure manual to include park-and-ride facility design and placement criteria** – This task includes the development of a conceptual vision for the location of future park-and-ride facilities consistent with the Transit Development Plan and the MPO's currently-adopted Cost Affordable Long Range Transportation Plan (LRTP). The vision will be illustrated by shaded areas on a map to support the development and site plan review process. This task also involves updating PCPT's current infrastructure manual (2005) to include a chapter on park-and-ride facilities that will include park-and-ride design standards for future application and implementation. (Note: FDOT is updating its statewide design handbook for Florida bus passenger facilities, *Accessing Transit* (currently Version II, 2008), anticipated to be completed in late 2012. The MPO/PCPT intends to update the local handbook once the statewide effort is completed. This Scope does not include a review and update of PCPT's current handbook.)
- **Task 2: Assess the availability of accessible paths to bus stops on Routes 19 and 30 and develop a bus stop access improvement plan** – This task involves the assessment of the pedestrian pathways connecting adjacent public destinations at approximately 300 bus stops along the Route 19 (US 19) and Route 30 (US 301) corridors. TOA will work with PCPT staff to identify the public destination points and pathways for assessment. A bus stop access and safety improvement plan will be developed and prioritized for these bus stops. Order-of-magnitude estimates of probable costs for the capital improvements will be developed.
- **Task 3: Provide additional sidewalk inventory and constructability analysis** – TOA will review sidewalk and crosswalk gaps and other sidewalk project opportunities, including a visual

observation of existing conditions along arterials/collectors that intersect US 19 (from county line to county line) and US 301 (within the city limits of Dade City and Zephyrhills). The assessment will be conducted for a distance up to ½ mile on each side of US 19 and US 301. Potential projects will be reviewed for constructability, estimates of probable costs will be developed, and projects will be prioritized using criteria developed in coordination with MPO and PCPT staff.

- **Task 4: Provide additional transit and sidewalk infrastructure planning support services to the MPO and PCPT** – At the request of MPO and PCPT staff, TOA will provide transit infrastructure planning support services, such as meetings, presentations, workshops, training, bus stop site ADA compliance/ accessibility reviews, and other support services.

Each of the four tasks is presented in greater detail in the remainder of this Scope of Services.

Task 1: Develop a conceptual vision for future park-and-ride facilities and update the transit infrastructure manual to include park-and-ride facility design and placement criteria.

This task includes the development of a conceptual vision for the location of future park-and-ride facilities consistent with the Transit Development Plan and the MPO's currently-adopted Cost Affordable LRTP. The conceptual vision will be illustrated by shaded areas on a county-wide map to support the County's development and site plan review process.

This task also involves the development of standards for the design and installation of park-and-ride facilities within the county. These standards, including park-and-ride facility size guidelines, will be consistent with FDOT District 7 and statewide standards. The park-and-ride facility design and accessibility standards will include the specific ADA Accessibility Guidelines for Buildings and Facilities (ADAAG) and FAC technical requirements necessary to construct a compliant parking area (accessible space locations and proximity with accessible pathways and elements of the facility, space dimensions and layout requirements, striping specifications, signage design characteristics, and quantity requirements in relation to total spaces provided). Guidelines for making decisions regarding the need for and placement of park-and-ride facilities also will be included (thresholds for need, location criteria, land and lot size requirements).

The design standards will be developed using the following regulations and guidelines:

- 49 CFR Part 37, Americans with Disabilities Act Accessibility Guidelines for Buildings and Facilities (ADA and ADAAG – 2004 Revision as adopted by USDOT Final Rule on November 29, 2006)
- Florida Building Code, Chapter 11, "Accessibility," 2010, with March 15, 2012 update
- FDOT District 4, *Transit Facilities Guidelines*, Version 2, updated April 2004 with 2008 supplements
- Department of Justice, Code of Federal Regulations, 28 CFR Part 36
- Chapter 14-20, Florida Administrative Code
- Title VI, Civil Rights Act of 1964
- FDOT, *Accessing Transit: Design Guidelines for Florida Bus Passenger Facilities* (Version II, 2008)
- FDOT Districts 1 & 7, *Transit Facility Handbook* (October 11, 2007)
- *FDOT State Park-and-Ride Lot Planning Handbook*

- Any municipal regulations that provide a more stringent (more accessible) requirement
- Current Pasco County and PCPT transit facility standards

Completion of this task will include the review of and coordination with recent and ongoing local and regional transportation system plans and studies to coordinate plans for future park-and-ride facilities (MPO Long Range Transportation Plan, TBARTA, FDOT District 7, HART, and PSTA).

In the performance of this effort, TOA will update the manual to include design standards for park-and-ride facilities that reflect full compliance with ADAAG (2006), FAC (2010/2012), FDOT (2008), and Title VI standards and requirements, while addressing issues related to accessibility, passenger comfort and safety, security, operations, and other transit support infrastructure considerations.

Responsibilities of Consultant:

- Task 1.01: Facilitate kickoff meeting and two review meetings with MPO and PCPT staff.
- Task 1.02: Develop conceptual vision and map for future park-and-ride facilities in Pasco County.
- Task 1.03: Develop park-and-ride facility design and accessibility standards.
- Task 1.04: Review and coordinate with local and regional transportation system plans and studies to coordinate park-and-ride planning efforts (TBARTA, FDOT District 7, HART, PSTA).
- Task 1.05: Prepare draft park-and-ride facility chapter for inclusion in *Transit Infrastructure Manual*.
- Task 1.06: Prepare final park-and-ride facility chapter for inclusion in *Transit Infrastructure Manual*.

Responsibilities of PCPT:

- Participate in kickoff and review meetings with Consultant and MPO staff.
- Coordinate with TOA on development of conceptual vision and map for future park-and-ride facilities.
- Coordinate with TOA as park-and-ride facility design and accessibility standards are developed.
- Review draft chapter on park-and-ride facilities.
- Receive final chapter on park-and-ride facilities.

Responsibilities of MPO:

- Participate in kickoff and review meetings with TOA and PCPT staff.
- Coordinate with TOA on the development of the conceptual vision and map for future park-and-ride facilities.
- Coordinate with TOA as park-and-ride facility design and accessibility standards are developed.
- Review draft chapter on park-and-ride facilities.
- Receive final chapter on park-and-ride facilities.

Deliverables for Task 1:

- Draft and final conceptual vision/map of future park-and-ride facilities in Pasco County.
- Draft chapter on park-and-ride facilities for addition to current *Transit Infrastructure Manual*.
- Final chapter on park-and-ride facilities for addition to current *Transit Infrastructure Manual*.
- Final deliverables will be provided in hardcopy and in electronic format on CD (including PDF of each complete deliverable).

Task 2: Assess the availability of accessible paths to bus stops on routes 19 and 30 and develop bus stop access improvement plan.

This task involves the assessment of accessible paths to up to 300 bus stops along the Route 19 (US 19) and Route 30 (US 301) corridors. The focus of the analysis will be an assessment of accessible paths to and from key origins and destinations within ½-mile of each bus stop. TOA will work closely with PCPT staff to identify the most relevant origins and destinations that fall within the ½-mile buffer around each bus stop. The evaluation will include an assessment of crash data near bus stops to identify opportunities to improve pedestrian safety, especially as it relates to bus stop accessibility. A bus stop access and safety improvement plan will be developed and prioritized for these bus stops. Order-of-magnitude estimates of probable costs for the capital improvements will be developed.

A review will be conducted of available plans and other information to determine if existing or future plans are in place for the renovation, replacement, or construction of transit and pedestrian infrastructure so that coordinated work plans can be compared with needs for accessible pathway improvements identified in the assessment.

While evaluating access to bus stops, the project team will document any obvious glaring issues that happen to be observed with regard to ADA compliance at the bus stops. However, other than the accessible path focus, other bus stop site accessibility will not be assessed as part of the field work.

Photographs will be taken at and near each bus stop to document the current conditions for accessing each bus stop. The photographs will assist the project team in illustrating recommended access improvements.

The information resulting from the assessment of bus stop access will be used to develop recommended access improvements for each of the reviewed bus stops. These recommendations will be incorporated into the bus stop database for ease of reference and future use by PCPT staff. A bus stop access prioritization methodology will be developed for the purpose of establishing a phased program of bus stop access improvements. This will involve establishing criteria for prioritization of improvements and coordination with state and municipal work plans. This effort will include:

- **Develop and rank bus stop access and safety improvements for Routes 19 and 30.** Develop bus stop access and safety improvement needs and a prioritized program of improvements. As part of this process, the existing capital improvement programs of PCPT, local jurisdictions, and FDOT District 7 will be reviewed to identify specific projects that could influence the timing or execution of the improvement program. A conceptual analysis of right-of-way needs and availability will be performed as part of the analysis.
- **Prepare order-of-magnitude estimates of probable cost for the improvement program.** Note that the estimates of probable cost will not include right-of-way acquisition, as a key objective is to identify projects that do not require additional right-of-way or can be achieved through the future negotiation of an easement between Pasco County and the land owner.
- **Based on the current and projected funding for PCPT Routes 19 and 30 bus stop improvements program, develop a phasing program to implement bus stop access and safety improvements.** This will consider any funding being provided through another capital project, such as planned improvements on PCPT transit emphasis corridors and projects being undertaken through state, county, or municipality projects.

- **Prepare a bus stop access improvement plan that presents a prioritized program for needed access improvements based on anticipated funding for bus stops on Routes 19 and 30.**

Responsibilities of Consultant:

- Task 2.01: Review existing PCPT bus stop inventory.
- Task 2.02: Develop recommendations for public destinations and pathways for assessment and coordinate selection with PCPT staff.
- Task 2.03: Complete a field review of agreed-upon pathways to 300 bus stops.
- Task 2.04: Update master inventory database using information obtained during field review and include documentation of key observations.
- Task 2.05: Develop recommended access and safety improvements for pathways to bus stops and prioritize these improvements to support a phased implementation plan.
- Task 2.06: Prepare draft report.
- Task 2.07: Prepare final report.

Responsibilities of PCPT:

- Coordinate with TOA on specific stops on US 19 and US 301 to be assessed.
- Coordinate with TOA regarding selection of public destinations and pathways for assessment.
- Coordinate with TOA as necessary as bus stop access assessment is performed.
- Review draft documentation of Bus Stop Improvement Plan.
- Receive final documentation and updated bus stop inventory database.

Responsibilities of MPO:

- Coordinate with PCPT and TOA staff as appropriate.
- Review draft documentation of Bus Stop Access Improvement Plan.
- Receive final documentation and updated bus stop inventory database.

Deliverables for Task 2:

- Draft report – Assessment of Accessible Paths to Bus Stops on Routes 19 and 30 and a Bus Stop Access Improvement Program
- Final report – Assessment of Accessible Paths to Bus Stops on Routes 19 and 30 and a Bus Stop Access Improvement Program
- Final deliverables will be provided in hardcopy and in electronic format on CD (including PDF of each complete deliverable).

Task 3: Provide additional sidewalk inventory and constructability analysis.

At the request of the MPO, TOA will conduct a sidewalk and crosswalk inventory along the east/west arterials/collectors that intersect US 19 (from county line to county line) and US 301 (within the city limits of Dade City and Zephyrhills). The study area for this task is based on a ½-mile buffer of the arterials/collectors illustrated in Figures 1 and 2 at the conclusion of this Scope of Services. The purpose of the inventory will be to identify sidewalk and crosswalk gaps and opportunities for sidewalk improvement projects. The inventory will be conducted via field visits.

TOA will also review the Pasco County Five-Year Work Program as well as FDOT's Five-Year Work Program or other studies directed by the Pasco County MPO staff to gain an understanding of future

sidewalk/pedestrian and roadway projects already being contemplated along the selected segments of crossing arterials/collectors.

Areas with sidewalk/crosswalk gaps will be reviewed for constructability or implementation of projects. The areas and projects identified as having a high likelihood of constructability will be prioritized. The prioritization of potential sidewalk projects will include the review and analysis of crash data and whether or not the project will increase connections to activity centers, schools, transit stops, or other pedestrian generators. Evaluation criteria will be reviewed with MPO and PCPT staff.

Responsibilities of Consultant:

- Task 3.01: Update inventory of sidewalks/crosswalks and gaps and identify sidewalk improvement opportunities.
- Task 3.02: Research five-year work programs and other documents as agreed upon by the MPO staff and TOA.
- Task 3.03: Conduct a constructability review and estimates of probable costs for projects deemed constructible.
- Task 3.04: Establish evaluation criteria and prioritize potential sidewalk/crosswalk projects for implementation.

Responsibilities of MPO:

- Coordinate with TOA staff as appropriate.

Deliverables for Task 3:

- Draft and final sidewalk inventory map.
- Draft and final map and table of prioritized sidewalk projects (including estimate of probable costs).
- Final deliverables will be provided in hardcopy and in electronic format on CD (including PDF of each complete deliverable).

Task 4: Provide additional transit and sidewalk infrastructure planning support services to the MPO and PCPT.

At the request of MPO and PCPT staff, TOA will provide transit and sidewalk infrastructure planning support services, such as meetings, presentations, workshops, training, bus stop site accessibility reviews, and other support services. Any request for services under this task will include a written agreement on the cost for the additional service requested.

Responsibilities of Consultant:

- Task 4.01: Provide on-call support for meetings, presentations, workshops, ADA training, bus stop site accessibility reviews, and other transit and sidewalk infrastructure planning support services requested by MPO and PCPT staff.

Responsibilities of PCPT:

- Request TOA in writing to provide on-call support services for transit and sidewalk infrastructure planning.

Responsibilities of MPO:

- Coordinate with PCPT and TOA staff as appropriate.

Deliverables for Task 4:

- Deliverables to be determined by requests made by MPO and PCPT staff.
- Final deliverables will be provided in hardcopy and in electronic format on CD (including PDF of each complete deliverable).

Summary of Project Deliverables

Deliverables prepared as part of this Scope of Services are listed below. All written deliverables will undergo an external editorial review before being finalized for the MPO and PCPT. For each draft and final deliverable, TOA will provide five (5) hardcopies and one (1) CD with electronic copies of files used to prepare all deliverables (including editable files and PDFs).

- **Deliverables for Task 1:**
 - Draft and final conceptual vision/map of future park-and-ride facilities in Pasco County.
 - Draft chapter on park-and-ride facilities to be added to current *Transit Infrastructure Manual*.
 - Final chapter on park-and-ride facilities to be added to current *Transit Infrastructure Manual*.
- **Deliverables for Task 2:**
 - Draft report – Assessment of Accessible Paths to Bus Stops on Routes 19 and 30 and a Bus Stop Access Improvement Program.
 - Final report – Assessment of Accessible Paths to Bus Stops on Routes 19 and 30 and a Bus Stop Access Improvement Program.
- **Deliverables for Task 3:**
 - Draft and final sidewalk/crosswalk inventory map.
 - Draft and final map and table of prioritized sidewalk/crosswalk projects (including estimate of probable costs).
- **Deliverables for Task 4:**
 - Deliverables to be determined according to on-call requests from MPO and PCPT staff.

C. TIME OF COMPLETION

This project will be completed within 12 months from Notice to Proceed (NTP), with the understanding that Tasks 1 through 3 will be completed within 6 months of NTP and the remaining 6 months will be available for miscellaneous transit and sidewalk infrastructure planning support services as requested by MPO and PCPT staff. Key deliverables and deadlines include:

- Draft map of countywide conceptual vision for park-and-ride facilities – 4 months from NTP
- Draft report – Park-and-Ride Facilities chapter for *Transit Infrastructure Manual* – 4 months from NTP
- Draft report – Assessment of Accessible Paths to Bus Stops on Routes 19 and 30 and a Bus Stop Access Improvement Program – 4 months from NTP
- Final map of countywide conceptual vision for park-and-ride facilities – 4 months from NTP
- Final report – Park-and-ride facilities chapter for *Transit Infrastructure Manual* – 6 months from NTP

- Final report – Assessment of Accessible Paths to Bus Stops on Routes 19 and 30 and a Bus Stop Access Improvement Program – 6 months from NTP
- Draft sidewalk inventory and prioritization – 4 months from NTP
- Final sidewalk inventory and prioritization – 6 months from NTP
- Schedule for on-call transit infrastructure planning support services to be agreed upon on a case-by-case basis

D. RECORDKEEPING

TOA will prepare invoices on a monthly basis. Each invoice will be based on the percent complete achieved for each authorized task. Each invoice will also show the total amount previously invoiced and the net amount due for the current invoice.

E. COMPENSATION

The budget for this scope of services is \$121,703.20 and is provided in Exhibit A.

F. RESPONSIBILITIES OF THE CONSULTANT

The responsibilities of the TOA are specified as part of each task in Section B of this Scope of Services.

G. RESPONSIBILITIES OF MPO

The responsibilities of the MPO are specified as part of each task in Section B of this Scope of Services.

H. RECORDKEEPING

TOA will invoice this lump sum task assignment on a monthly basis. The invoice will be based on the percent complete achieved. The invoice will also show the total amount previously invoiced and the net amount due for the current invoice. TOA will provide a monthly status report illustrating the work accomplished during the monthly reporting period.

I. ACCEPTANCE

By signature, the parties each accept the provisions of **Task Order No. MPO12-02: Pasco County Public Transportation (PCPT) Transit & Sidewalk Infrastructure Planning Services** and authorize Tindale-Oliver & Associates, Inc., to proceed at the direction of the MPO's representation in accordance with the Scope of Services.

DATED this _____ day of _____, _____.

BOARD OF COUNTY COMMISSIONERS
OF PASCO COUNTY, FLORIDA

ATTEST:

BY: _____
PAULA S. O'NEIL
CLERK AND COMPTROLLER

(SEAL)

BY: _____
ANN HILDEBRAND, CHAIRMAN
BOARD OF COUNTY COMMISSIONERS

TINDALE-OLIVER & ASSOCIATES, INC

ATTEST:

BY: _____
WILLIAM L. BALL
CHIEF OPERATING OFFICER

WITNESSES:

Name

Title

Print or type

Name

Title

Print or type

EXHIBIT A

**Pasco County Metropolitan Planning Organization
and Pasco County Public Transportation
Task Order No. MPO12-02**

**Transit & Sidewalk Infrastructure Planning Services
March 2, 2012
Tindale-Oliver & Associates, Inc.**

PROJECT BUDGET SUMMARY

| Task Name | | Total |
|-----------------------------|---|---------------------|
| TASK 1 | Update Transit Infrastructure Manual to Include Park-and-Ride Facility Design and Placement Criteria | \$28,745.66 |
| TASK 2 | Assess Availability of Accessible Paths to Bus Stops on Routes 19 and 30 and Develop Bus Stop Access Improvement Plan | \$46,171.58 |
| TASK 3 | Provide Additional Sidewalk Inventory and Constructability Analysis | \$22,985.96 |
| TASK 4 | Provide Transit Infrastructure Planning Support Services to the MPO and PCPT | \$23,800.00 |
| TOTAL PROJECT BUDGET | | \$121,703.20 |

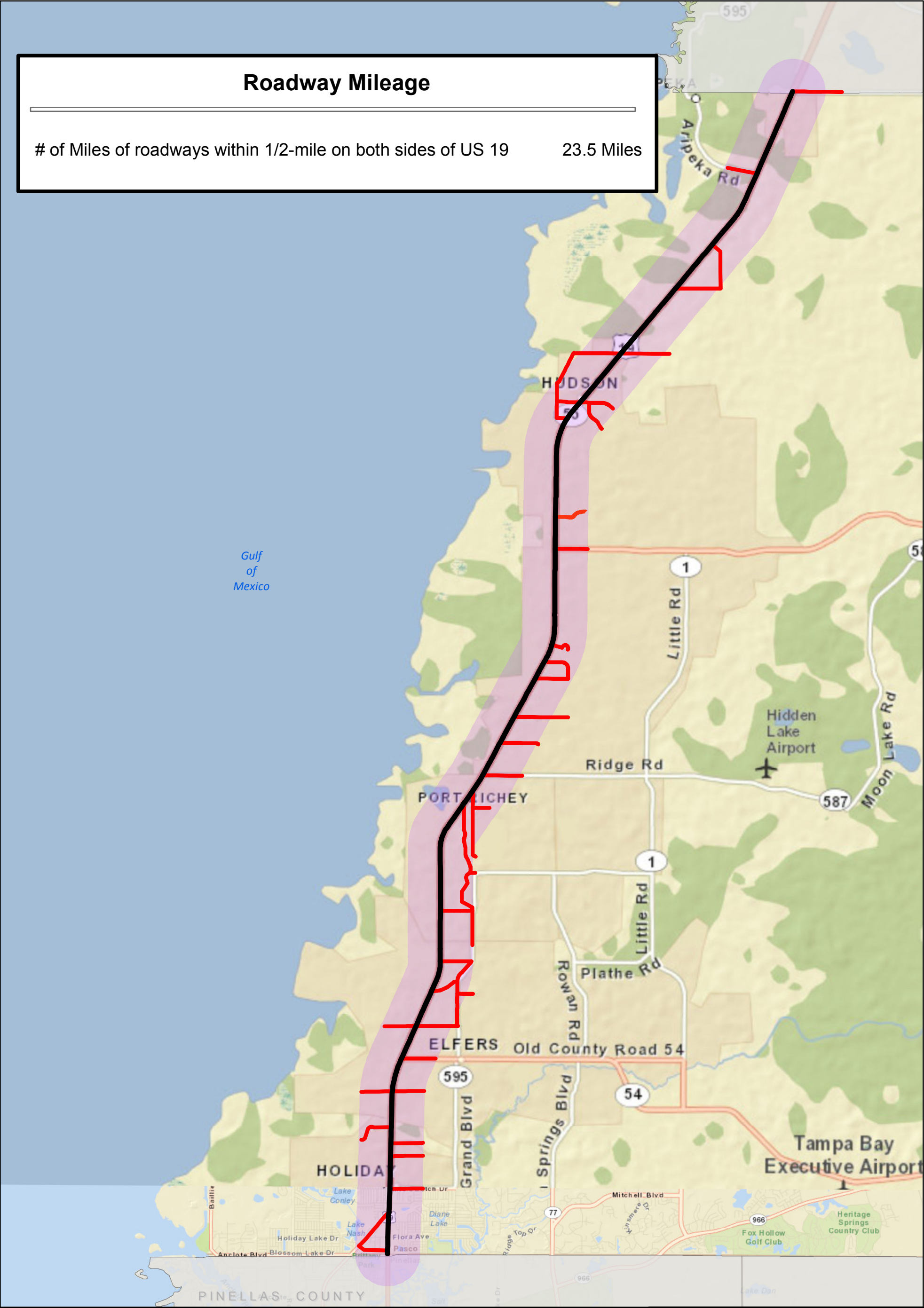
Note: A breakdown of hours by task, sub-task, and employee classification is provided in the attached table, along with the loaded hourly rates by classification. TOA key staff assigned to this project includes:

- Bill Ball, Principal-in-Charge
- Don Kloehn, Sr. Project Manager
- Asela Silva, Sr. Planner
- W.T. Bowman, Sr. Engineer
- Tom Hewitt, Planner
- Ji Li, Planner
- Ryan White, Engineer

Exhibit B
PASCO COUNTY METROPOLITAN PLANNING ORGANIZATION
PROPOSAL BUDGET
Tindale-Oliver & Associates, Inc.
PASCO COUNTY PUBLIC TRANSPORTATION
TRANSIT & SIDEWALK INFRASTRUCTURE PLANNING SERVICE
TASK ORDER NO. MPO12-02
March 2, 2012



| Sub-Task # | SUBTASK DESCRIPTION | Employee Classifications & Loaded Hourly Rates | | | | | | | Total Task Hours | Loaded Cost per Task |
|------------|---|--|-----------------|-------------------------|--------------------------|------------------|-------------------|-------------------------|------------------|----------------------|
| | | Principal \$268.79 | Sr. PM \$173.95 | Senior Planner \$136.44 | Senior Engineer \$136.44 | Planner \$101.25 | Engineer \$101.25 | Admin/ Clerical \$70.88 | | |
| 1.00 | Develop Conceptual Vision for Countywide Park-and-Ride Facilities & Update Transit Infrastructure Manual to Include Park-and-Ride | 8 | 42 | 36 | 0 | 128 | 0 | 20 | 234 | \$28,745.66 |
| 1.01 | Facilitate kickoff meeting and two review meetings | | 14 | | | 20 | | | 34 | \$4,460.30 |
| 1.02 | Develop conceptual vision for park-and-ride facilities in Pasco County | 4 | 8 | 12 | | 24 | | | 48 | \$6,534.04 |
| 1.03 | Develop park-and-ride facility design and accessibility standards | | 4 | 12 | | 40 | | 8 | 64 | \$6,950.12 |
| 1.04 | Review of and coordination with other relevant studies and plans | 1 | 4 | | | 8 | | | 13 | \$1,774.59 |
| 1.05 | Prepare draft park-and-ride chapter | 2 | 8 | 8 | | 24 | | 8 | 50 | \$6,017.74 |
| 1.06 | Prepare final park-and-ride chapter | 1 | 4 | 4 | | 12 | | 4 | 25 | \$3,008.87 |
| | | | | | | | | | | |
| 2.00 | Assess the Availability of Accessible Paths to Bus Stops (Routes 19 and 30) | 4 | 72 | 44 | 0 | 170 | 0 | 132 | 422 | \$46,171.58 |
| 2.01 | Review existing PCPT bus stop inventory data | | 2 | | | 2 | | | 4 | \$550.40 |
| 2.02 | Recommend destinations/pathways for assessment & review w/ PCPT | | 4 | 4 | | 24 | | | 32 | \$3,671.56 |
| 2.03 | Complete field review of 300 bus stops | | 24 | 16 | | 40 | | 120 | 200 | \$18,913.44 |
| 2.04 | Update inventory database & include documentation of observations | | 4 | 4 | | 24 | | | 32 | \$3,671.56 |
| 2.05 | Develop & prioritize recommended access improvements | 2 | 24 | 8 | | 40 | | | 74 | \$9,853.90 |
| 2.06 | Prepare draft report | 1 | 10 | 8 | | 24 | | 8 | 51 | \$6,096.85 |
| 2.07 | Prepare final report | 1 | 4 | 4 | | 16 | | 4 | 29 | \$3,413.87 |
| | | | | | | | | | | |
| 3.00 | Provide Additional Sidewalk Inventory and Constructability Analysis | 4 | 16 | 0 | 36 | 0 | 104 | 52 | 212 | \$22,985.96 |
| 3.01 | Update inventory of sidewalks and gaps; identify potential projects | | 2 | | 4 | | 16 | 40 | 62 | \$5,348.86 |
| 3.02 | Research related work programs | 1 | 4 | | 8 | | 16 | | 29 | \$3,676.11 |
| 3.03 | Review constructability and develop estimate of probable costs | 2 | 4 | | 12 | | 32 | | 50 | \$6,110.66 |
| 3.04 | Establish evaluation criteria and prioritize sidewalk project improvements | 1 | 4 | | 8 | | 32 | | 45 | \$5,296.11 |
| 3.05 | Prepare draft and final maps/tables | | 2 | | 4 | | 8 | 12 | 26 | \$2,554.22 |
| | | | | | | | | | | |
| 4.00 | Provide Transit & Sidewalk Infrastructure Planning Support Services | 8 | 40 | 20 | 20 | 80 | 0 | 16 | 184 | \$23,800.00 |
| 4.01 | Provide on-call services as requested by MPO and PCPT staff | 8 | 40 | 20 | 20 | 80 | | 16 | 184 | \$23,800.00 |

[illegible]



Roadway Mileage

of Miles of roadways within 1/2-mile on both sides of US 1923.5 Miles



Tindale-Oliver & Associates, Inc.
Planning and Engineering

US19

Other Roadways within 1/2-mile on both sides of US 19

1/2-mile on both sides of US 19

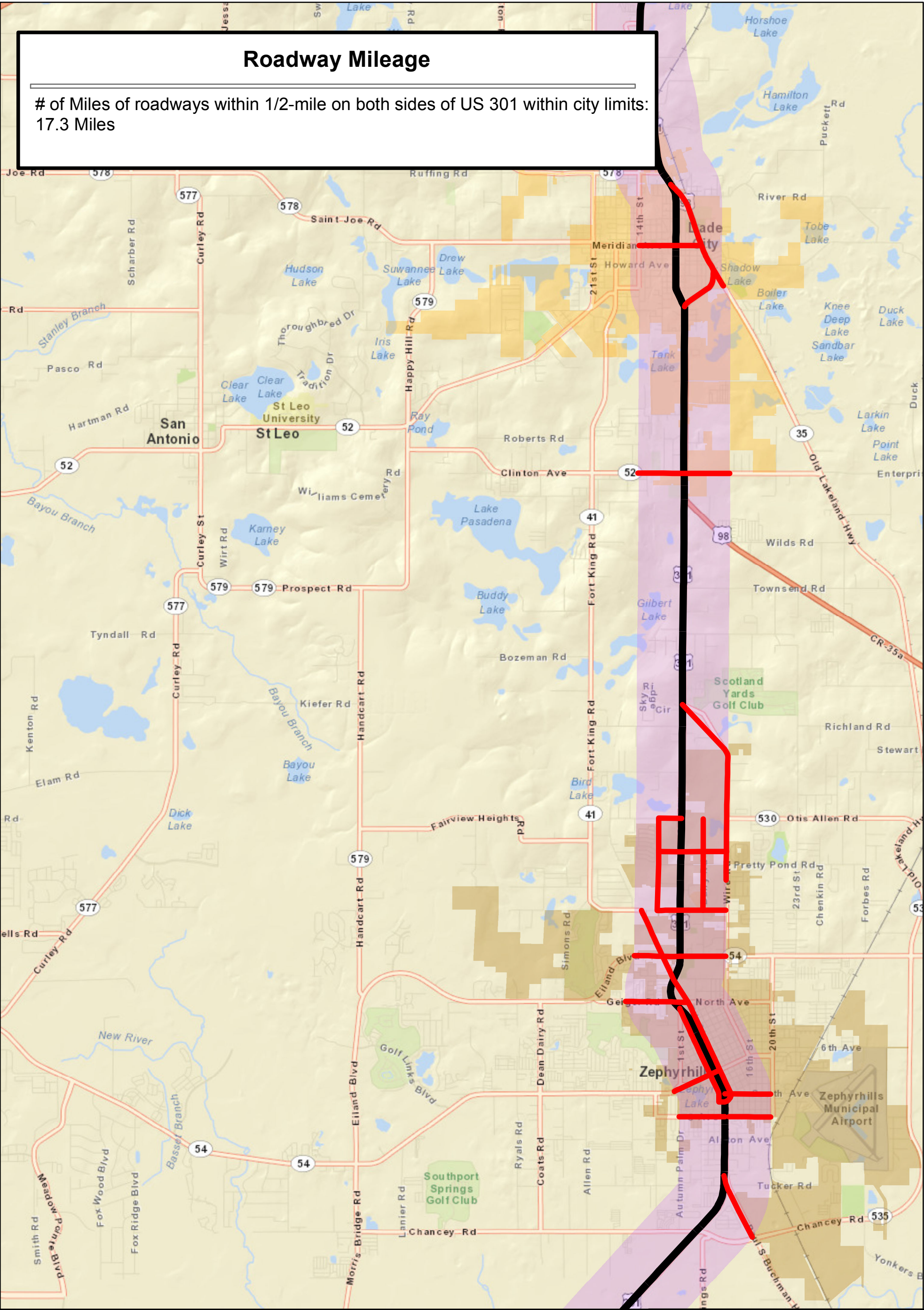
00.512



Miles

Figure 1

Additional Sidewalk Inventory

G:\





Tindale-Oliver & Associates, Inc.
Planning and Engineering

Other Roadways within 1/2-mile on both sides of US 301

US 301

Half mile on both sides of US 301

Citylimits

Dade City

Zephyrhills

0 0.5 1 2 Miles

Figure 2

Additional Sidewalk Inventory

G:\