



Pasco County Economic Growth Report FY 2024



The Pasco County Economic Report presents new and existing projects and programs supported by the Pasco County Office of Economic Growth. Additionally, this report contains economic data to show the changing dynamics of local households and businesses within Pasco County. This annual report is published for Pasco County stakeholders including citizens, civic organizations, entrepreneurs, businesses, developers, site selectors, and county staff.



Table of Contents

Director’s Annual Update	1
Economic Growth-Related Strategies	2
Growth Programs Strategy.....	2
Urban3 Fiscal Impact Strategy	2
Project and Program Updates.....	3
Board of County Commissioners Incentives at Work.....	3
North Tampa 75 Business Park.....	4
54 Crossings	4
Double Branch (FKA Pasco Town Center)	5
Moffit Cancer Campus Pasco County	6
Gary Plastics.....	7
Northpoint Development-Target Distribution Center.....	7
Locally Owned Small Business Mobility Fee Reductions.....	8
Community Development Block Grant (CDBG) Redevelopment Loans.....	8
Commercial Redevelopment Landscaping Grants	9
Brownfields.....	10
New Business Announcements & BOCC Approved Projects	11
Bauducco Foods.....	11
MiTek, Inc.....	12
I-75 Gateway Hub-KD52 MPUD.....	13
Economic Reports and Data	14
Pasco County Demographic Profile.....	14
Population Comparison.....	14
Pasco County Historical Population Changes	15
Pasco County Population Projections 2025 – 2050.....	16
Pasco County Households.....	17
Pasco County Industry and Employment Profiles.....	18
Pasco County Industry Sector Profile	18
Pasco County Employment Profile	19
Pasco-Hernando County Industries Growth Profile	20
Pasco-Hernando County Occupations Growth Profile.....	21



Table of Contents

Pasco County Wage Comparison 2023 vs 2022	22
Pasco County Worker Profile	23
Pasco County Labor Force and Employment Profile	24
Pasco County Commuting Data.....	25
Pasco County Tax Profile	26
Pasco County Utilities Profile	27
Pasco County Exports Profile	28
Pasco County Transportation Profile	29



Director's Annual Update

Welcome to the Pasco County Office of Economic Growth Fiscal Year 2024 annual report. The accompanying report will provide stakeholders, partners, and citizens with a variety of information pertaining to County economic related projects, programs and new initiatives growing our local economy.

The Office of Economic Growth provides fiduciary oversight and compliance for Board approved and funded economic development projects and programs. Additionally, the Office is committed to advance the policies outlined in the Board of County Commissioners' Strategic and Economic Development Plan related to creating a thriving community, the enhancement of quality of life, and stimulating the local economy.

Even though Pasco County is a highly attractive home for business expansion and growth, Board of County Commissioners' approved economic incentives play a vital role in attracting high paying job creating businesses since we directly compete with competitive high growth markets such as in Texas and the Carolinas. There has been a meaningful evolution in the structure and cost effectiveness of the economic incentives paid since the commencement of the current Penny for Pasco - Economic Development took effect. From FY15 to FY18, Board approved economic incentives averaged

\$34.93 per square foot of incentivized industrial or office. For the period of FY19-FY22, the average approved incentive per square foot fell by more than half to \$16.13. These cost efficiencies have improved even further in FY23 to \$10 per square foot for large speculative projects such as the

4.7 million square feet Double Branch project. Additionally, economic incentives are now focused on targeting employment generating public infrastructure reducing traffic impacts and supporting comprehensively designed multi-use commercial development. This aggressive negotiation approach to economic incentives has increased ROI outcomes and mitigated unfunded future public liabilities.

The Office of Economic Growth has been a proactive participant in the Florida Office of Broadband Opportunity Program. As a result of preparing and submitting a Pasco County Broadband Unmet Needs Plan to the State, over \$5 million of additional capital funding has been leveraged without the use of County funds. Recent reporting has shown that 91.6% of Pasco County households now have broadband internet subscriptions. The recently funded new projects should provide broadband access opportunities to the remaining unserved areas of the County.

Please take time to scan through the Board's locally owned small business programs. Over the past two years, the County has initiated a variety of initiatives including small business and commercial property landscaping improvements, capital project expansion loans and mobility fee reduction. We look forward to expanding these offerings in the near future as small businesses are the bedrock to the County's economy and job creation.

Thank you for taking the time to review our annual report.

Best wishes,

David H. Engel, MCRP, AICP
Planning, Development and Economic Growth Director

Economic Growth-Related Strategies

Growth Programs Strategy

The Pasco County Economic Growth Programs Strategy, developed by Ernst & Young (EY), focuses on balanced economic growth through place-making, redevelopment, and targeted industry support. Key priorities include leveraging public-private partnerships, implementing financial incentives, and encouraging form-based zoning to revitalize underutilized areas. The report highlights attracting high-wage industries such as life sciences and advanced manufacturing to diversify the tax base and reduce reliance on residential revenue. Programs like Penny for Pasco are essential to funding infrastructure, workforce development, and quality-of-place investments, enhancing Pasco's appeal for residents, businesses, and investors.

Urban3 Fiscal Impact Strategy

Urban3, a community planning consulting firm, provided an informational presentation to the Board of County Commissioners (BCC) on the financial and fiscal implications of County land development and zoning policies. Specializing in land value economics, Urban3 utilizes property and retail tax analysis to visually illustrate the economic impact of development patterns at the local level. Their proprietary approach highlights the relationship between land use decisions and the County's budget and fiscal sustainability. Urban3 presented its findings to the BCC, emphasizing how strategic land use decisions can align with the goals of the Pasco 2050 Comprehensive Plan, supporting balanced community growth and a diversified local tax base.

Project and Program Updates

Board of County Commissioners Incentives at Work

Active OEG Project, Program and Grant Portfolio

Category	During FY24
Active Projects	27
Active Programs	12
# of JCI* Jobs Requiring Annual Verifications	2,710
# of Annual Ad Valorem Rebates Requiring Annual Review	15
Square Footage of Incentivized Projects	14,365,425
Amount of Incentive/Funding Portfolio	\$355,561,191
Annual Gross County Product from Incentivized Projects	\$2,150,456,197
Average Term of Active Agreements	14.3
Grant Origination/Management	8

*JCI=Job Creation Incentives

Updated 11-21-24

FY24 New Project & Program Initiatives

Category	FY24
New Projects & Programs	6
New Project Future Employment	5,831
Square Footage of New Projects & Programs	4,581,000
Approved Amount of Project Incentives and Program Awards	\$58,664,693
ROR for Project Incentives	704.7

Updated 11-21-24

Penny For Pasco - Economic Development FY2015 - FY2024

Category	BCC Approved Amount	Amount Spent to date	Incentivized Jobs Created	Additional Annual Gross County Product (GCP)	Project Building Sq. ¹
Programs ¹	\$15,770,530.00	\$13,727,280.00			
Projects	\$63,843,173.00	\$45,719,993.36	30,509	\$2,052,256,197.00	14,151,000
Other ²	\$3,500,000.00	\$2,351,187.00			
Total	\$83,113,703.00	\$61,798,460.36	30,509	\$2,052,256,197.00	14,151,000

Updated 11-21-24

¹AmSkills, PEDC, PHWB

²Zephyrhills Airport Sewer Project

Project and Program Updates North Tampa 75 Business Park



- The Business Park is a four building, \$25.6 million, 880,000 square foot project, generating approximately 1,500 new full-time jobs. The property was formally surplus County property that was improved to development ready status funded through a \$3.08 million Florida Jobs Creation Grant and sold to an industrial developer in 2019. The first building, consisting of 187,000 square feet, received its Certificate of Completion in July 2023 and is fully leased. The project will add \$20.8 million in payroll and \$48.1 million to the Gross County Product.

54 Crossings



- Colwell Avenue Properties is a two-building office project located east of the Suncoast Parkway on SR 54. Each building will be 60,000 square feet. The first 60,000-square-foot building was completed in May 2023 and the majority of the building is already leased. The total capital cost of the project will be \$27.1 million and generate directly or indirectly 400 jobs with a payroll of \$17.7 million. The project will add \$26.5 million to the Gross County Product.

Project and Program Updates Double Branch (FKA Pasco Town Center)



- In June 2022, the Board of County Commissioners approved an Economic Development Agreement for Double Branch, which will be the first Employment Center in Connected City. This 965-acre project will include 4 million square feet of industrial development, 725,000 square feet of Class-A professional offices, and a mixed-use community center that features 400,000 square feet of retail businesses, a 300-room hotel, and 3,500 residential units. This development is designed to be a "15-minute" city, which means that residents will be able to live, work, and play without leaving the development area. The Double Branch master developer will install \$70 million of Connected City Employment roadway and utility main public infrastructure on its and adjoining properties to serve the future entire employment generation area. The Project is projected to generate 5,988 direct, indirect, and induced jobs and add \$330,781,404 in ad valorem value. Double Branch held its groundbreaking ceremony in October 2023. The project has made significant site preparation improvements with infrastructure permitting, construction of utilities, and road improvements to State Road 52.

Project and Program Updates

Moffitt Cancer Campus Pasco County



- In January 2023, Moffitt broke ground at its future 16.5 million square feet medical-life sciences business park located on 776 acres situated at the south- eastern corner of Ridge Road and the Suncoast Parkway. The new project, named Speros FL (“Hope” in Latin) is targeting late 2025 to first quarter 2026 to begin opening for business with a completed ambulatory facility and proton radiation treatment center within the first phase of development. Once completed, Phase I will consist of approximately 1,400,000 square feet including research facilities, medical offices and the patient treatment buildings highlighted above. Once completed, Speros FL will have approximately 14,500 new Moffitt jobs. Additionally, other partners and complimentary development will take place on the life sciences park generating an aggregated estimated new job creation projected at 25,000 – 30,000 new jobs. Currently, the site is under active development constructing primary roadways and the installation of utility mains. Moffitt has also begun construction of a new state of the art proton therapy facility, an ambulatory care center and the first of three seven-story laboratory buildings.

Project and Program Updates

Gary Plastic



- Gary Plastic has moved its plastics manufacturing operations from New York to Pasco County. They have leased an entire industrial building in the North Pasco Corporate Center on Softwind Lane and invested \$16 million in leasehold improvements, equipment, furniture, and fixtures. The company completed its move into the new building in 2024 and will employ over 555 new full-time employees. The project will generate \$21,839,399 in additional annual payroll and contribute \$102.1 million to the Gross County Product annually.

Northpoint Development-Target Distribution Center



- Northpoint Development received Board economic incentive approval providing funding assistance for off-site road improvements in June 2022. In less than 1.5 years, the developer completed this 1.4 million square feet industrial building. The building will be occupied by Target's distribution hub, which will create 2,400 new full-time jobs in Pasco. The project will increase the Gross County Product by an additional \$227.1 million annually.

Project and Program Updates



Locally Owned Small Business Mobility Fee Reductions

- The Board of County Commissioners has introduced a variety of small business assistance initiatives. Effective January 2022, expanding locally owned qualified small businesses are permitted to apply for reduced mobility fee rates. The Board noted that locally owned small businesses are less likely to be able to financially absorb the general commercial mobility fees. Eligible small business owners may apply for the [Locally Owned Small Business Mobility Fee Reduction](#). Since inception, 11 business have received a total of \$319,870.75 in reductions for their project's mobility fees.

Community Development Block Grant (CDBG) Redevelopment Loans

- Capital and property improvement loans are now available to qualified local registered businesses, non-profit organizations, and commercial property owners, which may include bringing site improvements up to existing code or purchase of new equipment. Five redevelopment loans have already been issued to date totaling \$335,000.

Project and Program Updates

Commercial Redevelopment Landscaping Grants

Before:



After:



- In 2021, the Pasco County Board of County Commissioners approved a Commercial Redevelopment Landscaping Grant Program which allows grants of up to \$50,000 to assist business owners in beautifying their commercially zoned properties located in designated areas of the County. To date, over \$1,406,584.96 in landscaping grants have been awarded to 64 local businesses and commercial property owners beautifying properties along the County's commercial corridors. Well landscaped businesses improve sales and contribute to higher property values.

Project and Program Updates

Brownfields

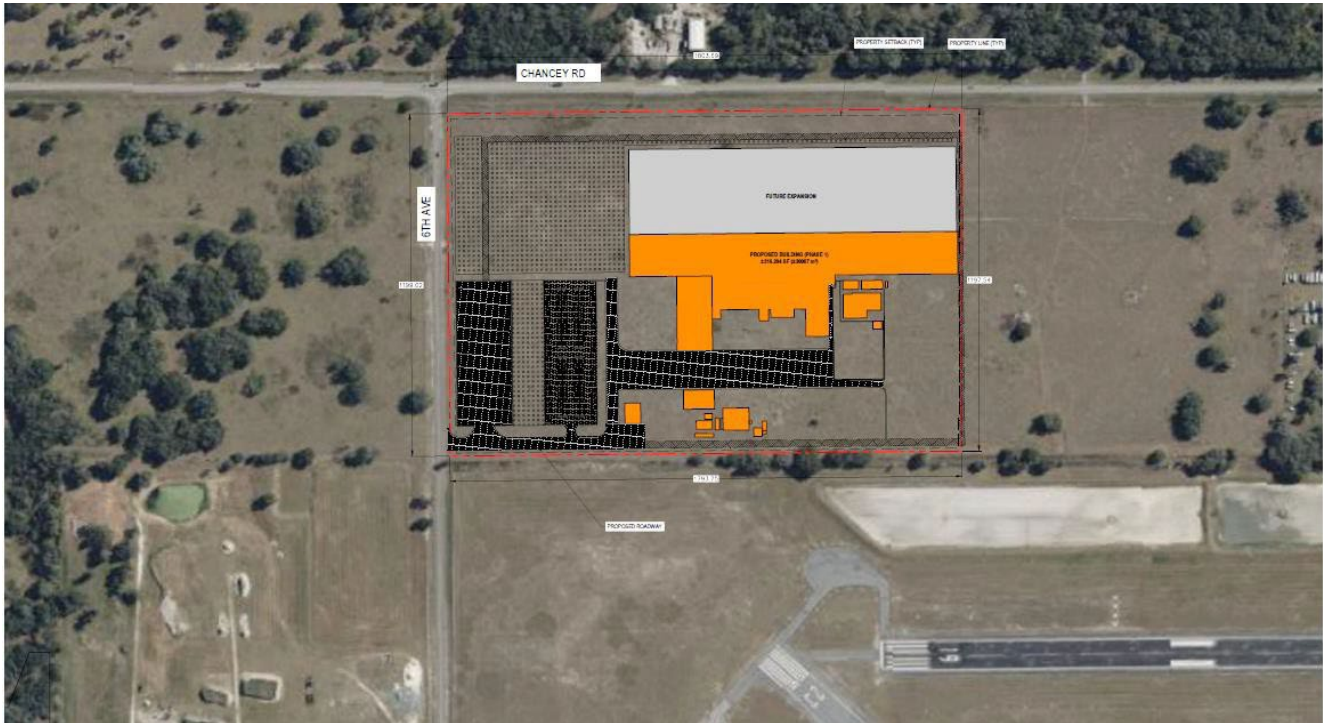


Brownfield Investigations	Sum of Count of Phase I	Sum of Count of Phase II	Sum of Count of Site Name
3621 US Hwy 19 Holiday Life prop Inc.	1		1
5632 River Gulf Rd	1		1
5634 River Gulf Rd	1		1
Eric Hoover Prop	1	1	1
Duncan Property US 19	1		1
Hernandez prop Drycleaner 3619 Land O Lakes Blvd	1	1	1
HK Development Group	1		1
Life Prop US Hwy 19 Holiday Life prop Inc.	2		2
River Gulf Rd.	1		1
Duncan Prop Graphic Dr.	1		1
Grand Total	11	2	11

- Pasco County awarded a \$500,000 EPA Assessment Grant.
- Pasco is working with SCS Engineering
- The grant period is up to 4 years.
- Covers Phase I, Phase II & clean up planning.
- Current Brownfield Investigations

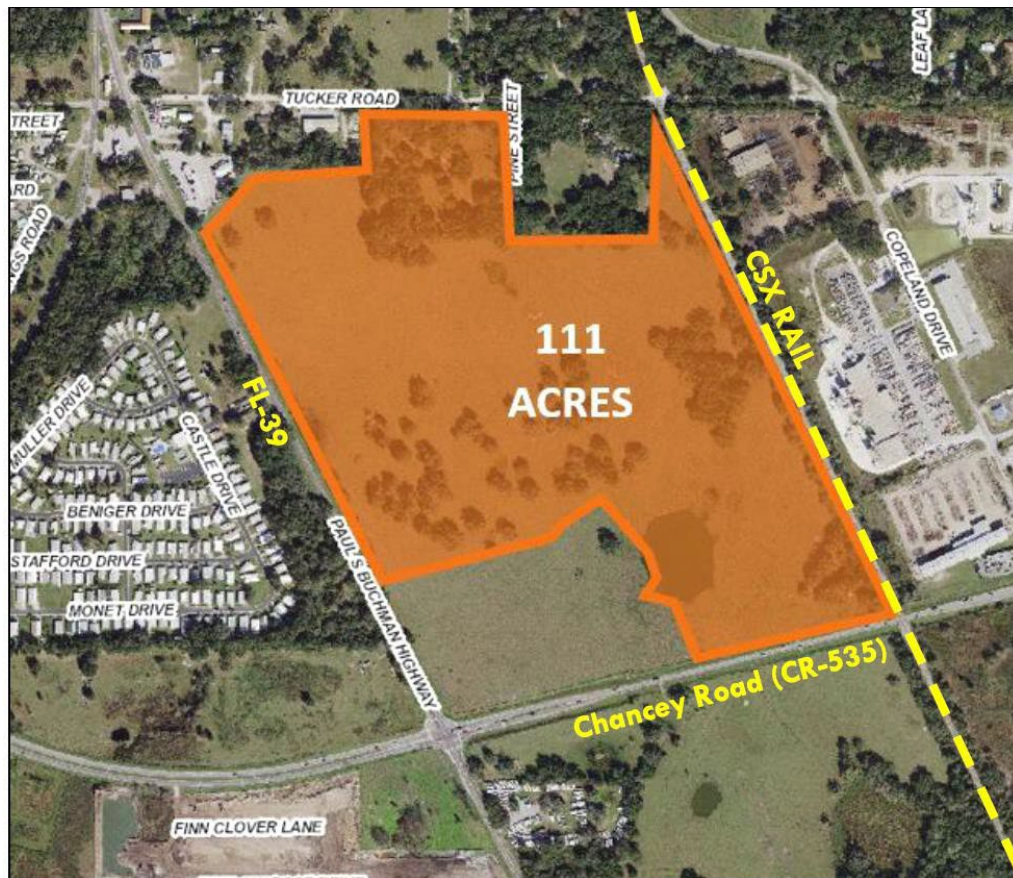
New Business Announcements & BOCC Approved Projects

Bauducco Foods



- Bauducco Foods is a multinational producer of baked goods. The company will move its U.S. operations to Pasco County. Bauducco will construct a 403,000 square foot industrial building on 72.52 acres near Zephyrhills Airport. that will employ 600 new full-time jobs. The first phase will be completed 2025/2026 and the final phase in 2028/2029. The company will invest a total of \$311 million of capital in three years. Pasco County is assisting with the project by providing \$4.4 million of Ad Valorem grants and reimbursing \$100,000 of employee training expenses.

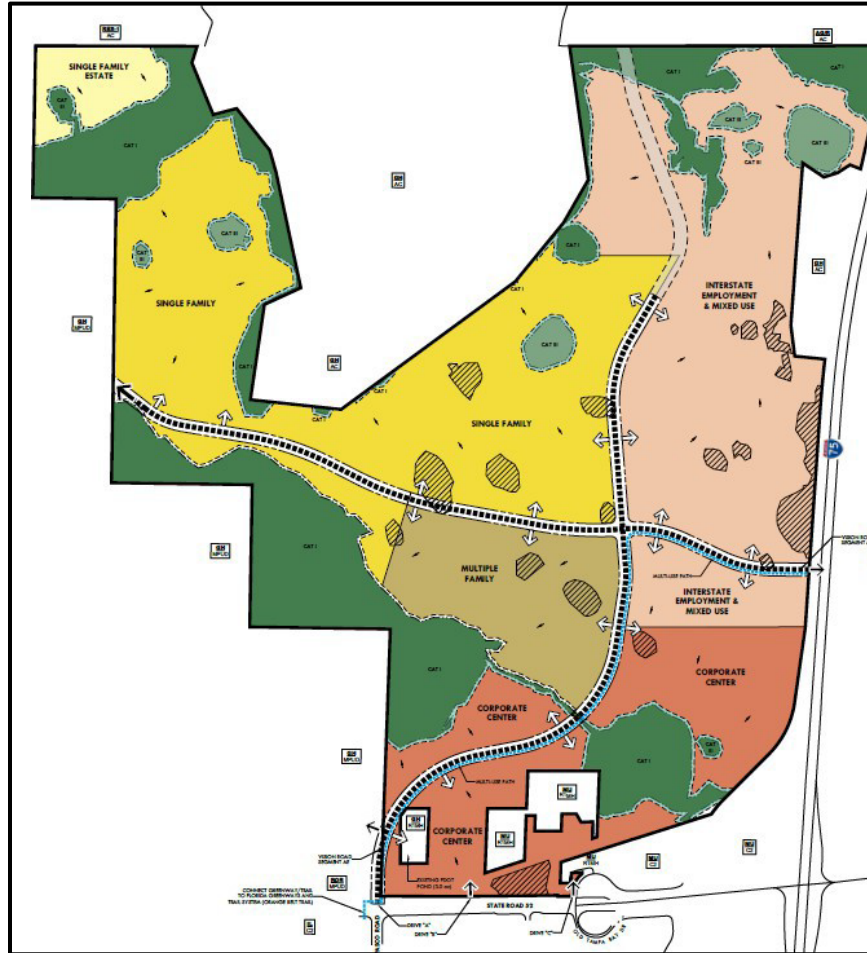
New Business Announcements & BOCC Approved Projects MiTek, Inc.



- MiTek provides integrated software, services, engineered products, and automated solutions for the building industry. The company is consolidating its two operations in Tampa Bay to a new single location in Pasco County. MiTek will invest \$77.6 million to construct a 480,000 square foot industrial building and create 25 new full-time jobs and relocate 125 existing jobs. The project will sit on 111 acres just south of the Zephyrhills Airport. Pasco County will provide incentives totaling \$3.150 million that consist of job creation incentives, Ad Valorem grants, and employee training grants. The project is projected to add \$183.1 million to the County's gross annual product.

New Business Announcements & BOCC Approved Projects

I-75 Gateway Hub-KD52 MPUD



- The developer has proposed a 785-acre development located at the northwestern corner of I-75 and State Road 52. The developer will improve the property by investing more than \$75.2 million to construct the road system, public utility transmission lines, and a portion of the Orange Belt Trail. The improvements will allow the developer to construct 3 million square feet. of industrial space, 500,000 square feet. of office space, 190,000 square feet. of retail space, 250 hotel rooms, and 2,327 residential dwellings. The project will add \$326,975,324 annually to the Gross County Product and create 2,770 direct, indirect, and induced jobs.

Economic Reports and Data

Pasco County Demographic Profile

Population Comparison

Pasco County, Florida			Tampa St. Petersburg Clearwater, FL Metro			Florida		
	Total	Percent		Total	Percent		Total	Percent
Total population	632,996	(X)	Total population	3,342,963	(X)	Total population	22,610,726	(X)
SEX			SEX			SEX		
Male	310,075	49.0%	Male	1,634,840	48.9%	Male	10,953,468	48.4%
Female	322,921	51.0%	Female	1,708,123	51.1%	Female	11,291,355	49.9%
AGE			AGE			AGE		
Under 5 years	30,668	4.8%	Under 5 years	162,300	4.9%	Under 5 years	1,122,270	5.0%
5 to 9 years	37,139	5.9%	5 to 9 years	175,760	5.3%	5 to 9 years	1,186,629	5.2%
10 to 14 years	36,640	5.8%	10 to 14 years	186,991	5.6%	10 to 14 years	1,266,208	5.6%
15 to 19 years	36,694	5.8%	15 to 19 years	193,456	5.8%	15 to 19 years	1,328,142	5.9%
20 to 24 years	32,373	5.1%	20 to 24 years	183,811	5.5%	20 to 24 years	1,285,607	5.7%
25 to 29 years	33,196	5.2%	25 to 29 years	208,176	6.2%	25 to 29 years	1,342,235	5.9%
30 to 34 years	39,520	6.2%	30 to 34 years	232,738	7.0%	30 to 34 years	1,472,398	6.5%
35 to 39 years	44,078	7.0%	35 to 39 years	228,052	6.8%	35 to 39 years	1,466,735	6.5%
40 to 44 years	40,479	6.4%	40 to 44 years	213,280	6.4%	40 to 44 years	1,434,963	6.3%
45 to 49 years	38,720	6.1%	45 to 49 years	200,591	6.0%	45 to 49 years	1,332,086	5.9%
50 to 54 years	41,556	6.6%	50 to 54 years	218,334	6.5%	50 to 54 years	1,428,440	6.3%
55 to 59 years	39,870	6.3%	55 to 59 years	218,906	6.5%	55 to 59 years	1,429,660	6.3%
60 to 64 years	44,085	7.0%	60 to 64 years	231,321	6.9%	60 to 64 years	1,597,671	7.1%
65 to 69 years	40,991	6.5%	65 to 69 years	210,499	6.3%	65 to 69 years	1,428,538	6.3%
70 to 74 years	34,040	5.4%	70 to 74 years	172,385	5.2%	70 to 74 years	1,252,984	5.5%
75 to 79 years	29,914	4.7%	75 to 79 years	138,024	4.1%	75 to 79 years	1,031,541	4.6%
80 to 84 years	20,127	3.2%	80 to 84 years	94,654	2.8%	80 to 84 years	657,889	2.9%
85 years and over	12,636	2.0%	85 years and over	73,685	2.2%	85 years and over	546,830	2.4%
Median age (years)	43	(X)	Median age (years)	42.4	(X)	Median age (years)	42.8	(X)

Source: 2023 U.S. Census Bureau, American Community Survey, 1-Year Estimates Subject Tables.

Economic Reports and Data
Pasco County Demographic Profile
 Pasco County Historical Population Changes

Year	Population	Growth	Annual Growth Rate over Previous Period
2023	632,996	24,202	3.98%
2022	608,794	24,727	4.23%
2021	584,067	22,176	3.95%
2020	561,891	7,944	1.43%
2019	553,947	14,317	2.65%
2018	539,630	13,987	2.66%
2017	525,643	13,275	2.59%
2016	512,368	14,459	2.90%
2015	497,909	12,578	2.59%
2014	485,331	9,829	2.07%
2013	475,502	5,111	1.09%
2012	470,391	3,934	0.84%
2011	466,457	1,760	0.38%
2010	464,697	119,932	34.79%
2000	344,765	63,634	22.63%
1990	281,131	87,488	45.18%
1980	193,643	117,688	154.94%
1970	75,955	39,170	106.48%
1960	36,785	16,256	79.19%
1950	20,529	6,548	46.83%
1940	13,981	3,407	32.22%
1930	10,574	1,772	20.13%
1920	8,802	1,300	17.33%
1910	7,502	1,448	23.92%
1900	6,054	1,805	42.48%
1890	4,249		

1. 1790-2010 & 2020 Decennial Census Population of States and Counties of the United States
2. 2011 & 2023 Based upon US Census Bureau ACS 1-Year

Economic Reports and Data

Pasco County Population Projections 2025 – 2050

Population Projections through 2050

County and State	Estimate s April 1, 2023	Projections, April 1						Inc./Dec.	Inc./Dec.
		2025	2030	2035	2040	2045	2050	2023- 2050	%
Pasco	610,743								
Low		598,400	624,100	640,000	644,400	644,100	642,200	31,457	5.15%
Medium		636,600	693,400	742,100	778,700	810,200	839,500	228,757	37.46%
High		674,800	762,800	844,100	913,000	976,300	1,036,700	425,957	69.74%
Hernando	204,265								
Low		197,700	200,700	201,300	199,700	196,500	193,000	(11,265)	-5.51%
Medium		210,300	223,000	233,400	241,300	247,100	252,200	47,935	23.47%
High		222,900	245,300	265,500	282,900	297,800	311,500	107,235	52.50%
Hillsborough	1,541,531								
Low		1,498,300	1,536,100	1,548,400	1,540,000	1,522,300	1,502,000	(39,531)	-2.56%
Medium		1,593,900	1,706,800	1,795,300	1,861,000	1,914,900	1,963,400	421,869	27.37%
High		1,689,600	1,877,400	2,042,200	2,182,100	2,307,400	2,424,800	883,269	57.30%
Pinellas	974,689								
Low		943,000	926,100	909,600	893,000	877,200	862,600	(112,089)	-11.50%
Medium		982,200	995,900	1,007,800	1,017,600	1,025,900	1,033,000	58,311	5.98%
High		1,021,500	1,065,600	1,106,100	1,142,300	1,174,700	1,203,500	228,811	23.48%
Tampa MSA	3,331,228								
Low		3,237,400	3,287,000	3,299,300	3,277,100	3,240,100	3,199,800	(131,428)	-3.95%
Medium		3,423,000	3,619,100	3,778,600	3,898,600	3,998,100	4,088,100	756,872	22.72%
High		3,608,800	3,951,100	4,257,900	4,520,300	4,756,200	4,976,500	1,645,272	49.39%
Florida	22,634,867								
Low		22,826,400	23,710,600	24,266,100	24,547,500	24,668,400	24,697,200	2,062,333	9.11%
Medium		23,292,200	24,698,500	25,815,000	26,682,000	27,409,400	28,065,000	5,430,133	23.99%
High		23,758,000	25,686,500	27,363,900	28,816,600	30,150,300	31,432,800	8,797,933	38.87%

Bureau of Economic and Business Research, University of Florida, February 2023

Economic Reports and Data

Pasco County Demographic Profile

Pasco County Households

			Tampa-St. Petersburg Clearwater, FL Metro Area		
<u>HOUSEHOLDS</u>	<u>Estimate</u>	<u>Percent</u>	<u>HOUSEHOLDS</u>	<u>Estimate</u>	<u>Percent</u>
Total households	239,952		Total households	1,358,788	
Average household size	2.61		Average household size	2.41	
FAMILIES			FAMILIES		
Total families	156,813		Total families	840,526	
Average family size	3.23		Average family size	3.02	
AGE OF OWN CHILDREN			AGE OF OWN CHILDREN		
Households with own children of the householder under 18 years	55,085	100.00%	Households with own children of the householder under 18 years	305,074	100.00%
Under 6 years only	10,521	19.1%	Under 6 years only	63,150	20.7%
Under 6 years and 6 to 17 years	10,191	18.5%	Under 6 years and 6 to 17 years	55,218	18.1%
6 to 17 years only	34,373	62.4%	6 to 17 years only	186,705	61.2%
SELECTED HOUSEHOLDS BY TYPE			SELECTED HOUSEHOLDS BY TYPE		
Households with one or more people under 18 years	62,627	26.1%	Households with one or more people under 18 years	346,491	25.5%
Households with one or more people 60 years and over	119,256	28.9%	Households with one or more people 60 years and over	622,325	45.8%
Householder living alone 65 years and over	35,273	14.7%	Householder living alone 65 years and over	410,354	30.2%
			Householder living alone 65 years and over	182,078	13.4%

Source: 2023 U.S. Census, American Community Survey, 1-Year Estimates Data Profiles.

Economic Reports and Data

Pasco County Demographic Profile

Pasco County Households

Pasco County, Florida			Tampa St. Petersburg Clearwater, FL Metro Area		
UNITS IN STRUCTURE			UNITS IN STRUCTURE		
1-unit structures	152,474	63.5%	1-unit structures	893,488	65.8%
2-or-more-unit structures	5,520	2.3%	2-or-more-unit structures	351,657	25.9%
Mobile homes and all other types of units	27,514	11.5%	3-Mobile homes and all other types of units	113,643	8.4%
Total	239,952	100.0%	Total	1,358,788	100.0%
HOUSING TENURE			HOUSING TENURE		
Owner-occupied housing units	185,508	77.3%	Owner-occupied housing units	922,351	67.9%
Renter-occupied housing units	54,444	22.7%	Renter-occupied housing units	436,437	32.1%
INCOME AND BENEFITS (IN 2020 INFLATION-ADJUSTED DOLLARS)			INCOME AND BENEFITS (IN 2020 INFLATION-ADJUSTED DOLLARS)		
Less than \$10,000	11,257	5.3%	Less than \$10,000	76,521	5.5%
\$10,000 to \$14,999	10,746	3.7%	\$10,000 to \$14,999	53,226	3.3%
\$15,000 to \$24,999	21,907	7.1%	\$15,000 to \$24,999	115,803	6.5%
\$25,000 to \$34,999	22,955	7.6%	\$25,000 to \$34,999	124,926	7.3%
\$35,000 to \$49,999	31,681	11.1%	\$35,000 to \$49,999	173,390	11.2%
\$50,000 to \$74,999	37,469	16.5%	\$50,000 to \$74,999	223,999	17.4%
\$75,000 to \$99,999	25,954	12.7%	\$75,000 to \$99,999	154,716	13.1%
\$100,000 to \$149,999	27,413	18.4%	\$100,000 to \$149,999	168,029	17.1%
\$150,000 to \$199,999	11,520	7.9%	\$150,000 to \$199,999	71,506	8.1%
\$200,000 or more	8,581	9.8%	\$200,000 or more	77,233	10.5%
Median household income (dollars)	72,317		Median household income (dollars)	72,743	

Source: 2023 U.S. Census, American Community Survey, 1-Year Estimates Data Profiles.

Economic Reports and Data

Pasco County Industry and Employment Profiles

Pasco County Industry Sector Profile

Industry Sectors	Pasco County Establishments		Pasco County Employees		Tampa MSA Establishments		Tampa MSA Employees	
Total for all sectors	11,554	100.00%	117,819	100%	89,630	100.00%	1,230,894	100%
		%				%		
Retail trade	1,600	13.85%	26,089	22.14%	10,691	11.93%	165,824	13.47%
Health care and social assistance	1,576	13.64%	24,501	20.80%	11,023	12.30%	203,279	16.51%
Construction	1,318	11.41%	9,559	8.11%	8,503	9.49%	80,612	6.55%
Professional, scientific, and technical service	1,313	11.36%	5,289	4.49%	13,473	15.03%	115,030	9.35%
Other services (except public administration)	1,037	8.98%	4,985	4.23%	7,467	8.33%	45,696	3.71%
Administrative, support, waste management and remediation services	875	7.57%	6,949	5.90%	5,891	6.57%	93,945	7.63%
Accommodation and food services	894	7.74%	15,520	13.17%	6,676	7.45%	130,002	10.56%
Real estate and rental and leasing	763	6.60%	2,130	1.81%	6,366	7.10%	26,016	2.11%
Finance and insurance	610	5.28%	3,123	2.65%	5,840	6.52%	100,599	8.17%
Wholesale trade	384	3.32%	3,641	3.09%	3,735	4.17%	50,595	4.11%
Transportation and warehousing	335	2.90%	2,746	2.33%	2,409	2.69%	35,859	2.91%
Manufacturing	255	2.21%	4,484	3.81%	2,251	2.51%	66,875	5.43%
Information	160	1.38%	1,253	1.06%	1,504	1.68%	27,815	2.26%
Arts, entertainment, and recreation	178	1.54%	1,453	1.23%	1,477	1.65%	25,492	2.07%
Educational services	160	1.38%	3,577	3.04%	1,257	1.40%	26,684	2.17%
Management of companies and enterprises	31	0.27%	1,176	1.00%	447	0.50%	30,750	2.50%
Utilities	29	0.25%	1,257	1.07%	127	0.14%	5,281	0.43%
Agriculture, forestry, fishing and hunting	24	0.21%	66	0.06%	91	0.10%	253	0.02%
Mining, quarrying, and oil and gas extraction	0	0.00%	0	0.00%	16	0.02%	155	0.01%

Source: 2023 U.S. Census, ECNSVY Business Patterns County Business Patterns.

Economic Reports and Data
Pasco County Industry and Employment Profiles
Pasco County Employment Profile

Pasco County 1st Quarter 2023				
Industry	Quarterly Establishments	Average Number of Employees	Average Weekly Wage	Total Quarterly Wages
Trade, transportation, and utilities	2,580	32,060	\$885	\$368,961,816
Education and health services	1,935	28,632	\$1,161	\$432,215,919
Leisure and hospitality	1,249	18,929	\$445	\$109,384,241
Goods-producing	2,233	16,435	\$1,092	\$233,284,888
Professional and business services	3,440	15,588	\$1,197	\$242,656,217
Construction	1,715	11,347	\$1,021	\$150,624,841
Financial activities	1,441	5,051	\$1,464	\$96,146,318
Other services	1,008	4,418	\$716	\$41,139,982
Manufacturing	421	4,336	\$1,307	\$73,652,914
Information	232	1,229	\$1,794	\$28,656,910
Natural resources and mining	97	751	\$922	\$9,007,133
Unclassified	422	182	\$920	\$2,180,540
Total, all industries	14,540	122,524	\$976	\$1,554,626,831

Source: Quarterly Census of Employment and Wages - Bureau of Labor Statistics, 2023 1st Qtr., All Establishment Sizes, Total (all jobs), High-Level Industries

Fastest Growing Industries	2023	2021	Growth	Percent Growth
Administrative and Support Services	10,481	12,592	2,111	20.1
Fabricated Metal Product Manufacturing	927	1,107	180	19.4
Nonstore Retailers	709	844	135	19.0
Professional and Technical Services	10,975	13,033	2,058	18.8
Educational Services	4,111	4,878	767	18.7
Accommodation	1,512	1,788	276	18.3
Chemical Manufacturing	215	254	39	18.1
Support Activities for Transportation	357	420	63	17.6
Electrical Equipment and Appliances	332	390	58	17.5
Building Material & Garden Supply Stores	2,725	3,193	468	17.2
Insurance Carriers & Related Activities	2,144	2,504	360	16.8
Beverage and Tobacco Product Manufacturing	569	663	94	16.5
Ambulatory Health Care Services	15,701	18,250	2,549	16.2
Construction of Buildings	2,483	2,882	399	16.2
Food Manufacturing	283	327	44	15.5
Telecommunications	838	963	125	14.9
Social Assistance	4,387	4,994	607	13.8

Economic Reports and Data
Pasco County Industry and Employment Profiles
 Pasco-Hernando County Industries Growth Profile

Industries Gaining the Most New Jobs	2023	2031	Growth	Percent Growth
Ambulatory Health Care Services	15,701	18,250	2,549	16.2
Administrative and Support Services	10,481	12,592	2,111	20.1
Professional and Technical Services	10,975	13,033	2,058	18.8
Food Services and Drinking Places	21,613	22,708	1,095	5.1
Educational Services	4,111	4,878	767	18.7
Hospitals	9,835	10,568	733	7.5
Social Assistance	4,387	4,994	607	13.8
General Merchandise Stores	8,160	8,717	557	6.8
Building Material & Garden Supply Stores	2,725	3,193	468	17.2
Specialty Trade Contractors	10,768	11,181	413	3.8
Construction of Buildings	2,483	2,882	399	16.1
Insurance Carriers & Related Activities	2,144	2,504	360	16.8
Food and Beverage Stores	7,993	8,336	343	4.3
Motor Vehicle and Parts Dealer	4,995	5,327	332	6.6
Nursing and Residential Care Facilities	5,506	5,818	312	5.7
Repair and Maintenance	2,338	2,634	296	12.7
Accommodation	1,512	1,788	276	18.3
Merchant Wholesalers, Durable Goods	2,729	2,967	238	8.7
Membership Organizations & Associations	2,615	2,822	207	7.9
Ammusement, Gambling & Recreation Ind	2,296	2,496	200	8.7

Source: Florida Department of Economic Opportunity, Workforce Development Area
 16 (Pasco & Hernando County) March 2023.

Economic Reports and Data

Pasco County Industry and Employment Profiles

Pasco-Hernando County Occupations Growth Profile

Fastest Growing Occupations	2023	2031	Total Job Opening	2022 Median Hourly Wage (\$)*
	Growth G	Percent		
Nurse Practitioners	420	661	241	57.4
Logisticians	75	105	30	40.0
Medical and Health Services Managers	946	1,249	303	32.0
Industrial Truck and Tractor Operators	1,022	1,276	254	24.9
Market Research Analysts & Marketing Specialists	709	871	162	22.8
Medical Assistants	2,210	2,695	485	21.9
Substance Abuse, Behavioral Disorder, and Mental Health Counselors	323	392	69	21.4
Management Analyst	740	883	143	19.3
Speech-Language Pathologist	272	324	52	19.1
Financial Managers	482	573	91	18.9
Industrial Machinery Mechanics	244	290	46	18.9
Landscaping and Groundskeeping Workers	2,424	2,846	422	17.4
Surveying and Mapping Technicians	111	130	19	17.1
Accountants and Auditors	1,351	1,574	223	16.5
Transportation, Storage, and Distribution Managers	86	100	14	16.3
Paramedics	105	122	17	16.2
Paralegals and Legal Assistants	334	388	54	16.2
Stockers and Order Fillers	4,623	5,345	722	15.6
Mechanical Engineers	77	89	12	15.6
Production, Planning, and Expediting Clerks	244	282	38	15.6

Source: Florida Department of Commerce, Workforce Development Area 16 (Pasco & Hernando County) 2023.

Economic Reports and Data

Pasco County Industry and Employment Profiles

Occupations Gaining the Most New Jobs	2023	2031	Percent	Growth Growth	Total Job Openings	2022 Median Hourly Wage (\$)
Stockers and Order Fillers	317	519	722	15.8	7,514	14.5
Retail Salesperson	1,914	2,697	618	7.3	10,778	13.94
Medicial Assistants	126	176	485	21.9	3,205	17.63
Landscaping and Groundskeeping Workers	775	1,056	422	17.4	3,166	14.65
General and Operations Managers	252	338	407	11.1	3,083	36.4
Registered Nurses	1,203	1,548	388	7.1	2,952	37.71
Janitors and Cleaners, Except Maids and Housekeeping Cleaners	771	983	355	12.4	3,757	12.73
Heavy and Tractor-Trailer Truck Drivers	125	159	332	10.6	3,430	21.46
Medical and Health Services Managers	619	777	303	32.0	990	47.33
Home Health and Personal Care Aides	411	515	289	14.0	2,958	13.27
Fast Food and Counter Workers	320	399	277	5.2	9,745	12.59
Construction Laborers	1,734	2,161	264	9.7	2,500	17.7
Industrial Truck and Tractor Operators	248	309	254	24.9	1,294	22.79
Nurse Practitioners	147	182	241	57.4	462	50.26
Medical Secretaries and Administrative Assistants	300	370	230	13.7	1,881	17.52
Accountants and Auditors	662	806	223	16.5	1,229	34.61
Maintenance and Repair Workers, General	262	318	206	8.9	2,066	18.43
Sales Representatives of Services, Except Advertising, Insurance, Financial	507	615	196	10.5	1,882	23.18
Services and Travel	255	309	182	11.4	2,076	15.06
Laborers and Freight, Stock, and Material Movers, Hand	208	252	162	22.8	780	30.07
Market Research Analyst and Marketing Specialists						

Source: Florida Department of Commerce, Workforce Development Area 16 (Pasco & Hernando County) 2023.

Economic Reports and Data

Pasco County Industry and Employment Profiles

Pasco County Wage Comparison 2023 vs 2022

High Level Industry Private Sector	2023 Annual Establishments	2022 Annual Establishments	% of Change 2023 vs. 2022	2022 Annual Average Employment	2023 Annual Average Employment	% of Change 2022 vs. 2021	2023 Total Annual Wages	2022 Total Annual Wages	% of Change 2022 vs. 2021
Total, all industries	14,589	13,884	5.08%	\$119,515.00	124,557	-4.05%	\$6,444,070,110.00	\$6,012,400,038.00	7.18%
Service-providing	12,380	11,739	5.46%	\$102,903.00	108,081	-4.79%	\$5,474,444,774.00	\$5,071,342,189.00	7.95%
Goods-producing	2,210	2,145	3.03%	\$16,613.00	16,477	0.83%	\$969,625,336.00	\$941,057,849.00	3.04%
Natural resources and mining	98	99	-1.01%	\$779.00	756	3.04%	\$41,432,890.00	\$38,213,741.00	8.42%
Construction	1,688	1,655	1.99%	\$11,568.00	11,498	0.61%	\$644,192,554.00	\$628,275,775.00	2.53%
Manufacturing	424	391	8.44%	\$4,265.00	4,223	0.99%	\$283,999,892.00	\$274,568,333.00	3.44%
Trade, transportation, and utilities	2,573	2,503	2.80%	\$31,340.00	32,636	-3.97%	\$1,465,951,288.00	\$1,402,748,155.00	4.51%
Information	257	221	16.29%	\$1,302.00	1,280	1.72%	\$115,134,914.00	\$184,600,500.00	-37.63%
Financial activities	1,434	1,371	4.60%	\$4,860.00	5,059	-3.93%	\$370,745,472.00	\$300,754,634.00	23.27%
Professional and business services	3,401	3,245	4.81%	\$15,323.00	15,526	-1.31%	\$1,042,584,292.00	\$960,388,174.00	8.56%
Education and health services	1,982	1,865	6.27%	\$27,421.00	29,333	-6.52%	\$1,832,505,128.00	\$1,651,280,512.00	10.97%
Leisure and hospitality	1,251	1,184	5.66%	\$18,164.00	19,368	-6.22%	\$453,629,163.00	\$403,740,851.00	12.36%
Other services	1,016	966	5.18%	\$4,250.00	4,503	-5.62%	\$174,594,989.00	\$155,528,790.00	12.26%
Unclassified	466	386	20.73%	\$242.00	373	-35.12%	\$19,299,528.00	\$12,300,573.00	56.90%

Economic Reports and Data

Pasco County Industry and Employment Profiles

High Level Industry Private Sector	2023 Annual Average Weekly Wage	2021 Annual Average Weekly Wage	% of Change 2022 vs. 2021	2022 Annual Wages per Employee	2021 Annual Wages per Employee	% of Change 2022 vs. 2021
Total, all industries	\$995	\$967	2.90%	\$51,736	\$50,307	2.84%
Service-providing	\$974	\$948	2.74%	\$50,651	\$49,283	2.78%
Goods-producing	\$1,132	\$1,089	3.95%	\$58,848	\$56,648	3.88%
	\$1,132					
Natural resources and mining	\$1,054	\$943	11.77%	\$54,793	\$49,029	11.76%
Construction	\$1,077	\$1,044	3.16%	\$56,027	\$54,311	3.16%
Manufacturing	\$1,293	\$1,238	4.44%	\$67,255	\$64,377	4.47%
Trade, transportation, and utilities	\$864	\$861	0.35%	\$44,918	\$44,758	0.36%
Information	\$1,729	\$2,726	-36.57%	\$89,926	\$141,764	-36.57%
Financial activities	\$1,409	\$1,190	18.40%	\$73,278	\$61,890	18.40%
Professional and business services	\$1,291	\$1,205	7.14%	\$67,149	\$62,676	7.14%
Education and health services	\$1,201	\$1,158	3.71%	\$62,472	\$60,219	3.74%
Leisure and hospitality	\$450	\$427	5.39%	\$23,421	\$22,227	5.37%
Other services	\$746	\$704	5.97%	\$38,770	\$36,597	5.94%
Unclassified	\$994	\$977	1.74%	\$51,707	\$50,829	1.73%

Source: Quarterly Census of Employment and Wages - Bureau of Labor Statistics, Annual Averages 2023, 2022, All Establishment Sizes, Total (all jobs), High-Level Industries

Economic Reports and Data
Pasco County Industry and Employment Profiles
 Pasco County Worker Profile

Label	Pasco County, Florida		Tampa St. Petersburg Clearwater, FL Metro	
	Estimate	%	Estimate	%
Total population	632,996		3,342,963	
Male	310,168	49.0%	1,634,709	48.9%
Female	322,828	51.0%	1,708,254	51.1%
Median age (years)	43.0		42.4	
18 years and over	505,131	79.8%	2,701,114	80.8%
21 years and over	484,875	76.6%	2,587,453	77.4%
62 years and over	165,212	26.1%	825,712	24.7%
65 years and over	137,993	21.8%	688,650	20.6%
18 years and over	504,910		2,700,766	
Male	244,881	48.5%	1,304,470	48.3%
Female	260,029	51.5%	1,396,296	51.7%
18 to 34 years	118,144		701,035	
Male	59,190	50.1%	351,219	50.1%
Female	58,954	49.9%	349,816	49.9%
35 to 64 years	249,058		1,310,484	
Male	122,786	49.3%	643,448	49.1%
Female	126,272	50.7%	667,036	50.9%
65 years and over	137,708		689,247	
Male	62,795	45.6%	310,161	45.0%
Female	74,913	54.4%	379,086	55.0%
EDUCATIONAL ATTAINMENT				
Population 25 years and over	459,482		2,440,645	
Less than high school diploma	37,218	8.1%	222,099	9.1%
High school graduate (includes equivalency)	149,332	32.5%	666,296	27.3%
Some college or associate's degree	135,547	29.5%	695,584	28.5%
Bachelor's degree	85,464	18.6%	532,061	21.8%
Graduate or professional degree	51,462	11.2%	322,165	13.2%
High school graduate or higher	422,264	91.9%	2,218,546	90.9%
Male, high school graduate or higher	417,669	90.9%	2,194,140	89.9%
Female, high school graduate or higher	426,859	92.9%	2,240,512	91.8%
Bachelor's degree or higher	137,385	29.9%	854,226	35.0%
Male, bachelor's degree or higher	131,871	28.7%	844,463	34.6%
Female, bachelor's degree or higher	142,439	31.0%	863,988	35.4%
EMPLOYMENT STATUS				
Civilian employed population 16 years and over	290,752		1,632,080	
Male civilian employed population 16 years and over	150,675	51.8%	845,993	51.8%
Female civilian employed population 16 years and over	140,077	48.2%	786,087	48.2%

Economic Reports and Data

Pasco County Industry and Employment Profiles

INCOME IN THE PAST 12 MONTHS (IN 2023
INFLATION-
ADJUSTED DOLLARS)

Households	239,952		1,358,788	
Median household income (dollars)	\$72,317		\$72,743	
Families	156,813		840,526	
Median family income (dollars)	\$92,627		\$91,061	
Individuals	632,996		3,342,963	
Per capita income (dollars)	\$39,678		\$42,998	
Median earnings (dollars) full-time, year-round workers:				
Male	\$60,911		\$60,676	
Female	\$49,228		\$50,114	
COMPUTERS AND INTERNET USE				
Total households	239,952		1,358,788	
With a computer	231,794	96.6%	1,319,383	97.1%
With a broadband Internet subscription	222,436	92.7%	1,274,543	93.8%

Source: U.S. Census Bureau, 2023 American Community Survey 1 Year Estimates Selected Population Profiles

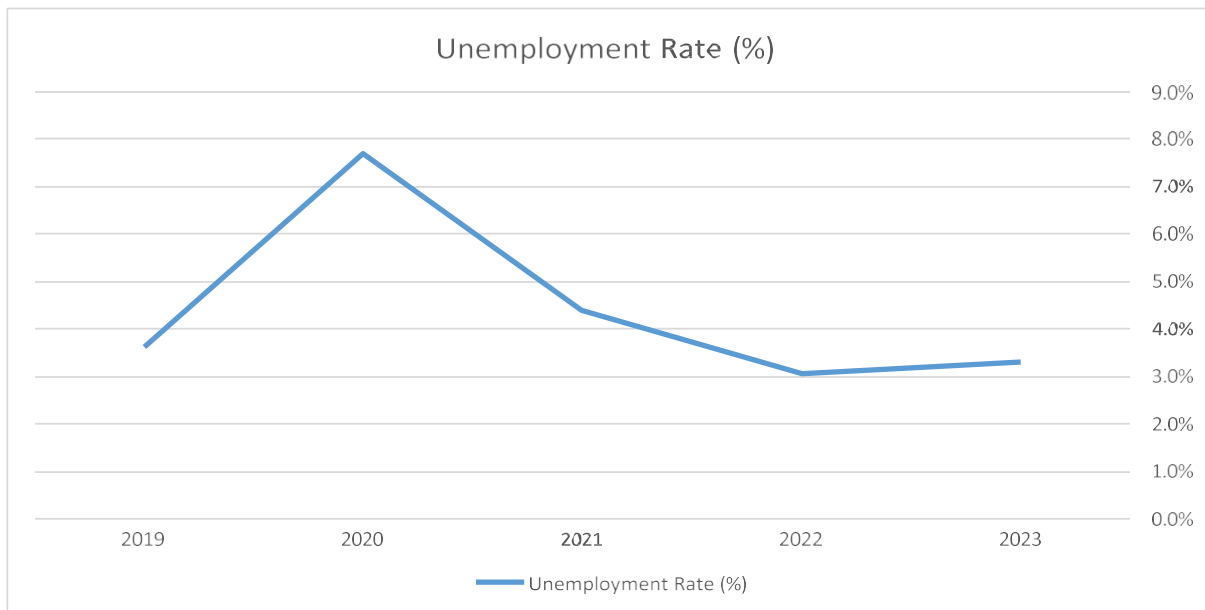
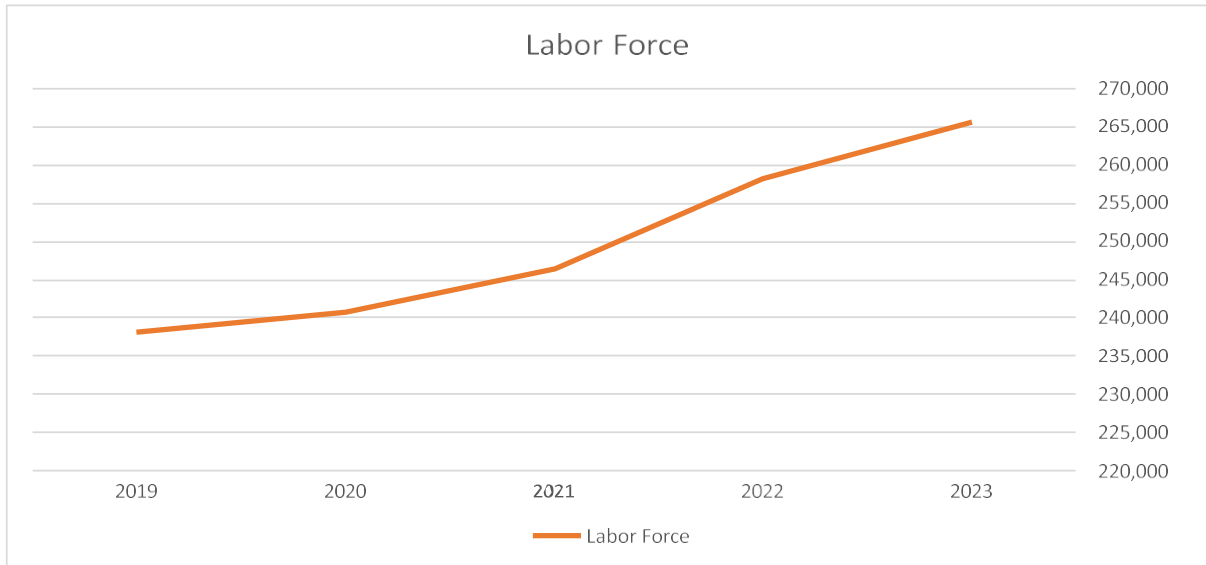
Economic Reports and Data

Pasco County Industry and Employment Profiles

Pasco County Labor Force and Employment Profile

County	Year	Labor Force	Employed	Unemployed	Unemployment Rate (%)
Pasco County, FL	2023	265,469	256,626	8,843	3.3%
Pasco County, FL	2022	258,149	250,277	7,872	3.0%
Pasco County, FL	2021	246,350	235,484	10,866	4.4%
Pasco County, FL	2020	240,726	222,182	18,544	7.7%
Pasco County, FL	2019	238,171	229,604	8,567	3.6%

Source: Bureau of Labor Statistics



Economic Reports and Data

Pasco County Industry and Employment Profiles

Pasco County Commuting Data

Label	2023				2022				2021			
	Pasco County, Florida		Tampa St. Petersburg		Pasco County, Florida		Tampa St. Petersburg		Pasco County, Florida		Tampa St. Petersburg	
	Estimate	%	Estimate	%	Estimate	%	Estimate	%	Estimate	%	Estimate	%
Total:	287,181		1,609,870		272,130		1,575,399		256,429		1,512,945	
Worked in state of residence:	283,558	98.74%	1,592,699	98.93%	270,206	99.29%	1,560,554	99.06%	253,569	98.88%	1,501,424	99.24%
Worked in county of residence	174,785	60.86%	1,323,471	82.21%	171,659	63.08%	1,292,065	82.02%	162,266	63.28%	1,253,948	82.88%
Worked outside county of residence	108,773	37.88%	269,228	16.72%	98,547	36.21%	268,489	17.04%	91,303	35.61%	247,476	16.36%
Worked outside state of residence	3,623	1.26%	17,171	1.07%	1,924	0.71%	14,845	0.94%	2,860	1.12%	11,521	0.76%
Male:	149,880		839,671		141,467		818,785		135,439		792,432	
Worked in state of residence:	147,184	98.20%	828,823	98.71%	139,987	98.95%	809,167	98.83%	133,161	98.32%	784,340	98.98%
Worked in county of residence	84,286	56.24%	673,879	80.26%	83,189	58.80%	650,002	79.39%	77,839	57.47%	637,634	80.47%
Worked outside county of residence	62,898	41.97%	154,944	18.45%	56,798	40.15%	159,165	19.44%	55,322	40.85%	146,706	18.51%
Worked outside state of residence	2,696	1.80%	10,848	1.29%	1,480	1.05%	9,618	1.17%	2,278	1.68%	8,092	1.02%
Female:	137,301		770,199		130,663		756,614		120,990		720,513	
Worked in state of residence:	136,374	99.32%	763,876	99.18%	130,219	99.66%	751,387	99.31%	120,408	99.52%	717,084	99.52%
Worked in county of residence	90,499	65.91%	649,592	84.34%	88,470	67.71%	642,063	84.86%	84,427	69.78%	616,314	85.54%
Worked outside county of residence	45,875	33.41%	114,284	14.84%	41,749	31.95%	109,324	14.45%	35,981	29.74%	100,770	13.99%
Worked outside state of residence	927	0.68%	6,323	0.82%	444	0.34%	5,227	0.69%	582	0.48%	3,429	0.48%

Source: U.S. Census Bureau, American Community Survey 1 Year Estimates Detailed Tables, 2023, 2022, 2021-

Economic Reports and Data

Pasco County Industry and Employment Profiles

Means of Transportation and Average Travel Time		
Label	Pasco County, Florida	Tampa St. Petersburg Clearwater, FL Metro Area
Workers 16 years and over	287,181	1,609,870
Car, truck or van	76.50%	75.60%
Drove Alone	66.70%	66.40%
Carpooled	9.90%	9.20%
Public transportation (excluding taxicab)	0.20%	1.00%
TRAVEL TIME TO WORK		
Less than 10 minutes	9.6%	9.3%
10 to 14 minutes	9.6%	11.0%
15 to 19 minutes	12.9%	14.9%
20 to 24 minutes	10.6%	12.5%
25 to 29 minutes	5.6%	7.3%
30 to 34 minutes	15.0%	15.5%
35 to 44 minutes	9.5%	9.1%
45 to 59 minutes	13.9%	10.1%
60 or more minutes	13.3%	10.3%
Mean travel time to work (minutes)	31.9	29.4

Source: 2023 U.S. Census Bureau. American Community Survey, ACS 1-Year Estimates, Means of Transportation to Work by Selected Characteristics

Economic Reports and Data

Pasco County Tax Profile

Unincorporated County	15.6884
Dade City	22.8284
New Port Richey	22.3348
Port Richey	20.2348
San Antonio	19.7084
St. Leo	16.3884
Zephyrhills	21.9384

Source: Pasco County Tax Collector

FY2018 2022 Tourism Development Tax Collections	
FY2022	\$5,017,688
FY2021	\$3,598,847
FY2020	\$2,639,427
FY2019	\$3,040,375
FY2018	<u>\$2,590,324</u>
Total	\$16,886,661

Source: Florida's Sports Coast

2017 2024 "Penny for Pasco" Tax Collections	
2023-2024	\$79,112,629
2022-2023	\$78,220,897
2021-2022	\$73,629,097
2020-2021	\$66,154,762
2019-2020	\$58,233,172
2018-2019	\$55,453,874
2017-2018	<u>\$51,338,777</u>
Totals	\$462,143,208

Source: Florida Department of Revenue

Economic Reports and Data
Pasco County Utilities Profile
Typical Electric Bill Comparisons*

Residential Utility	Initial Connect	Minimum Bill	KWH					
			100	250	500	750	1000	1500
Duke Energy	\$58.00	\$12.51	\$21.77	\$40.25	\$71.00	\$101.75	\$132.50	\$203.98
Tampa Electric Co.	\$112.00	\$21.30	\$34.87	\$55.25	\$89.21	\$123.16	\$157.10	\$235.64
Withlacoochee Coop.	\$40.00	\$39.16	\$48.15	\$61.63	\$84.11	\$106.58	\$129.05	\$175.13

Commercial Utility	Initial Connect	Minimum Bill	KWH					
			750	1,500	15,000	45,000	150,000	400,000
Duke Energy	\$61.00	\$136	\$257	\$2,375	\$6,195	\$20,612	\$50,952	\$101,88
Tampa Electric Co.	\$112.00	\$136	\$249	\$2,211	\$5,298	\$17,585	\$39,913	8
Withlacoochee Coop.	\$65.00	\$107	\$174	\$1,518	\$4,004	\$13,244	\$33,194	\$79,240 \$66,344

Typical Natural Gas Bill Comparisons*

Residential Utility	Minimum Bill	Terms Sold Per Month						
		10	20	30	40	50	75	100
Peoples Gas	\$18.10 - 24.60	\$37	\$56	\$81	\$100	\$119	\$166	\$213

Commercial Utility	Minimum Bill	Terms Sold Per Month						
		30	50	70	90	150	200	300
Peoples Gas	\$30.60 - 45	\$89	\$129	\$168	\$207	\$325	\$415	\$600

Industrial Utility	Minimum Bill	Terms Sold Per Month						
		400	500	600	700	800	900	1000
Peoples Gas	\$45 - \$82	\$785	\$970	\$1,155	\$1,340	\$1,525	\$1,699	\$1,879

Economic Reports and Data

Typical Water Bill Comparisons*

Residential Utility	Base Charge	Charge per M Gallons	Gallons	Bill Comparisons	
				5M Gallons	10M Gallons
A Utility Inc	\$21.67			\$21.67	\$21.67
Crestridge Utilities, LLC	\$16.29	\$5.35 \$10.63	0-3M >3M	\$53.60	\$106.75
Holiday Garden Utilities LLC	\$13.78	\$4.49 \$7.12	0-3M >3M	\$41.49	\$77.09
Hometown Canada Utility, Inc	\$9.91	\$7.96		\$49.71	\$89.51
HV Utility Systems, LLC	\$7.58	\$3.16		\$24.57	\$41.17
Orange Land Utilities, LLC	\$18.19	\$5.32 \$6.25	0-4M >4M	\$45.72	\$76.97
Pasco County Utilities**	\$10.44	\$2.07 \$3.29 \$6.59 \$8.89	0-5M >5-10M >10-15M >15M	\$20.79	\$37.24
Sunshine Water Services Company	\$13.21	\$1.85 \$2.77 \$4.64	0-4M >4-12M >12M	\$23.38	\$37.23

Typical Wastewater Bill Comparisons*

Residential Utility	Base Charge	Charge per M Gallons	Maximum Gallons	Maximum Bill
	Hometown Canada Utility, Inc	\$17.69	\$7.90	6M
HV Utility Systems, LLC	\$15.75	N/A	N/A	\$15.75
Ni Florida, Inc.	\$26.88	\$8.25	6M	\$76.38
Pasco County Utilities**	\$21.81	\$10.44	10K	\$88.91
Sunshine Water Services Company	\$34.32	\$5.48	8M	\$78.16

*Excludes local taxes, franchise fees, and gross receipts taxes that are billed as a separate line item. Includes cost recovery clause factors effective December 2023.

**Based upon Pasco County Utilities FY24 Rates

Source: 2023 Florida Public Service Commission & Pasco County Utilities FY24 Rates

Economic Reports and Data

Pasco County Exports Profile

Pasco County Exports 2012-2022											
County	2012	2013	2014	2015	2016	2017	2018	2019	2020	2021	2022
Pasco County	\$77,442,194	\$53,379,738	\$119,608,796	\$156,855,381	\$87,085,497	\$82,958,301	N/A	\$91,669,710	N/A	N/A	\$93,677,013

Source: US Department of Commerce

INTERNATIONAL TRADE ADMINISTRATION

Metropolitan Area Goods Exports Analysis Tool
Tampa-St. Petersburg-Clearwater, FL - Snapshot

Select Metro Area
Tampa-St. Petersburg-Clearwater, FL

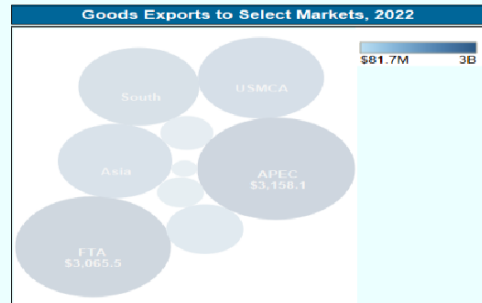
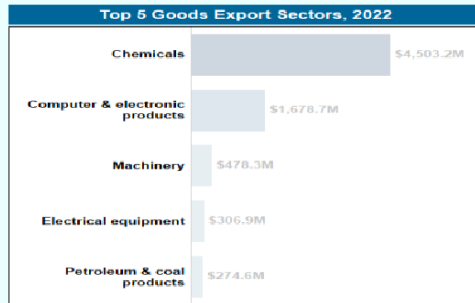
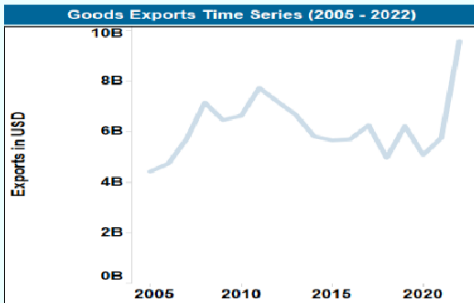
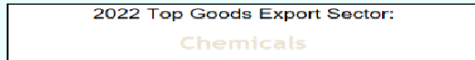
Top 5 Export Sectors



Tampa-St. Petersburg-Clearwater, FL
was the
41st
largest Metropolitan* exporter in 2022

Select Export Markets

* In 2022, total goods export data were available for 386 out of 392 metro areas. Suppressed metro areas are excluded from ranking and denoted by "None".



Notes: Start and end year changes based on data availability. For years with no value in the top chart, the MSA total was suppressed.

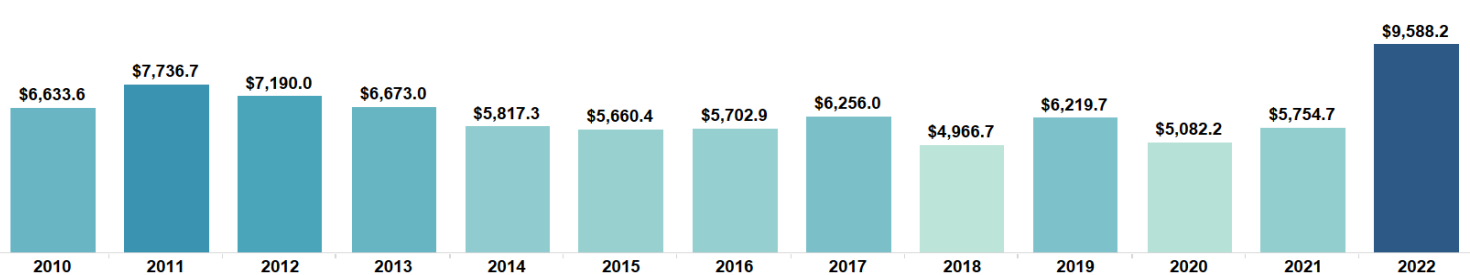
Note: D indicates export data are suppressed, but category is among the top 5.

Notes: Countries may be members of multiple regions/agreements; therefore, the sum may exceed total exports. EU and FTA partners are defined as membership existed in the year of the data. The chart excludes markets where data are suppressed.

Prepared by the Office of Trade & Economic Analysis, Industry & Analysis, International Trade Administration of U.S. Department of Commerce. Source: U.S. Census Bureau. Last updated: October 2023 with 2022 annual data. For more information, visit trade.gov/ita-metropolitan-export-series or contact us at tse.otea@trade.gov.



Tampa-St. Petersburg-Clearwater, FL Goods Exports Over Time (Millions of USD)



Tampa-St. Petersburg-Clearwater, FL Goods Exports by Select Markets and Regions (Millions of USD)

Destination	2010	2011	2012	2013	2014	2015	2016	2017	2018	2019	2020	2021	2022
Africa	\$115.5	\$186.5	\$201.3	\$174.8	\$108.6	\$90.8	\$55.1	\$91.5	\$124.1	\$99.8	\$57.8	\$76.4	\$81.7
APEC	\$4,231.2	\$4,684.0	\$4,401.7	\$4,125.7	\$3,576.9	\$3,005.3	\$3,232.4	\$3,647.3	\$2,327.3	\$3,444.6	\$2,524.0	\$2,701.0	\$3,158.1
ASEAN	\$168.9	\$218.9	\$169.7	\$173.2	\$146.0	\$161.2	\$173.2	\$155.4	\$182.2	\$176.3	\$215.3	\$241.4	\$276.0
Asia	\$1,050.1	\$1,312.9	\$1,077.0	\$921.1	\$1,117.5	\$1,312.6	\$1,173.9	\$1,248.0	\$1,169.8	\$1,313.8	\$1,273.0	\$1,491.7	\$1,668.5
CAFTA-DR	\$207.2	\$229.3	\$281.3	\$249.3	\$185.9	\$215.5	\$185.1	\$180.6	\$194.5	\$218.8	\$217.0	\$287.0	\$351.5
European Union	\$554.3	\$619.8	\$568.2	\$578.0	\$562.7	\$529.9	\$529.2	\$587.5	\$627.6	\$645.5	\$640.5	\$903.2	\$750.2
FTA					\$3,292.5	\$2,875.7	\$3,071.5	\$3,410.9	\$2,124.5	\$3,151.8	\$2,366.0	\$2,463.0	\$3,065.5
South America	\$734.4	\$1,121.4	\$966.0	\$879.4	\$859.5	\$1,075.5	\$1,041.9	\$993.4	\$961.8	\$1,018.2	\$890.0	\$1,009.7	\$1,844.0
USMCA	\$3,148.9	\$3,435.8	\$3,123.4	\$3,022.3	\$2,543.3	\$1,981.5	\$2,330.0	\$2,723.7	\$1,428.6	\$2,504.9	\$1,571.3	\$1,532.7	\$2,004.6
World	\$6,633.6	\$7,736.7	\$7,190.0	\$6,673.0	\$5,817.3	\$5,660.4	\$5,702.9	\$6,256.0	\$4,966.7	\$6,219.7	\$5,082.2	\$5,754.7	\$9,588.2

Notes: Start and end year change based on data availability. For years with no value in the top chart, the MSA total was suppressed. Countries may be members of multiple regions/agreements; therefore, the sum may exceed total exports. EU and FTA Partners are defined as membership existed in the year of the data. For definitions of regions, visit trade.gov/ita-metropolitan-export-series-frequently-asked-questions-faqs.

Prepared by the Office of Trade & Economic Analysis, Industry & Analysis, International Trade Administration of U.S. Department of Commerce. Source: U.S. Census Bureau. Last updated: October 2023 with 2022 Annual data. For more information, visit trade.gov/ita-metropolitan-export-series or contact us at tse.otea@trade.gov.



Economic Reports and Data Pasco County Transportation Profile

International Airports (2024)			
Name	Passengers	Gates	Non stop Destinations ³
St. Petersburg-Clearwater International (PIE) ¹	2,494,952	12	58
Tampa International Airport (TPA) ²	23,948,889	59	94
1. St. Petersburg-Clearwater Int. Airport 2. Tampa International Airport 3. Directflights.com			
General Aviation Airports			
Zephyrhills Municipal Airport			

Pasco County Registered Aircraft	
Ownership	Total
Co-Owned	28
Corporation	23
Government	10
Individual	177
LLC	94
Other	1
Partnership	3
Total	336
Source: FAA as of October 11, 2023	

Public Transportation		
GoPasco Data	FY23	FY24
Total Fixed Route Passenger Trips	638,829	654,633
Total ACCESS Passenger Trips	44,131	38,338
Total Passenger Trips (System)	682,960	692,971
Total Revenue Miles (Fixed)	1,445,107	1,448,858
Total Revenue Mile (ADA/Para)	369,534	318,204
Total Revenue Miles (System)	1,814,641	1,767,060
Full Time Equivalentents	122	135
Source: GoPasco County Public Transportation		

Port of Tampa Bay	
Dry Bulk Cargo Tons	10,706,596
Liquid Bulk Cargo Tons	33,099,661
General Cargo Tons	1,915,900
Container	1,088,332
Scrap	334,823
Steel Products	210,227
Other General Cargo	282,518
Cruise Passengers	1124057
TEUS	217,110
Source: Port of Tampa Bay FY 23 Report	

Major Roadways	
Federal Interstates	I-75
Federal Highways	US 19, US 41, US 98, US 301
State Highways	SR-52, SR-54, SR-589



Prepared by:

Pasco County Office of Economic Growth

8731 Citizens Drive, Suite 209

New Port Richey, FL 34654

(727) 815-7092 | OEG@PascoCountyfl.net

[Pasco County Office of Economic Growth Website](#)

