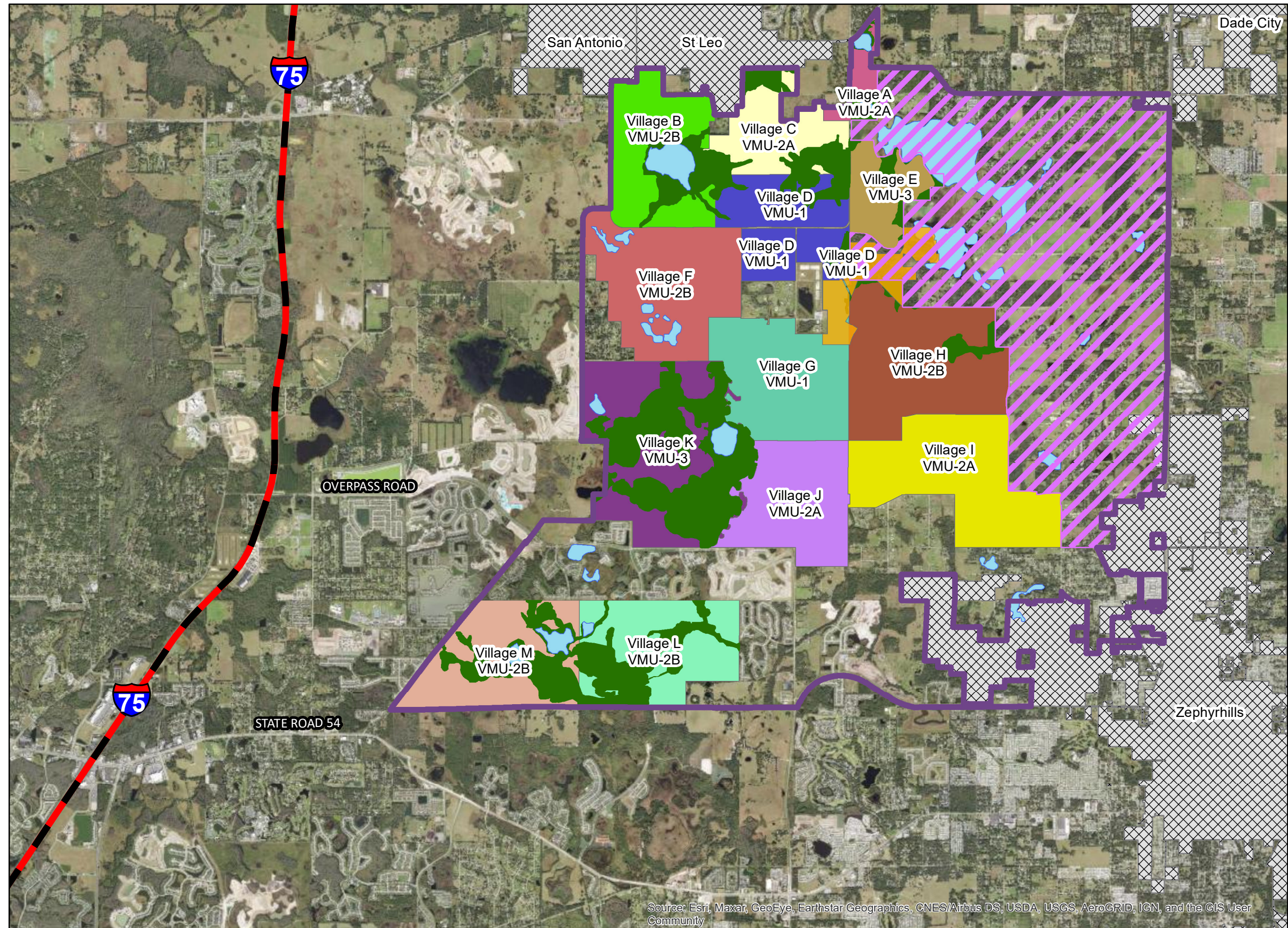







FIGURE PH-7: VILLAGE LOCATION MAP



LEGEND

-
-  Pasadena Hills Boundary
 -  VOPH Countryside
 -  Super Park
 -  Approved Core Reserve
 -  Adjacent City Limits

Map Created By:



A horizontal number line with tick marks at 0, 5,000, and 10,000. The word "Feet" is written at the right end. A shaded rectangular region starts at 0 and ends at 5,000.

Source: Heidt Design, Pasco County, Pasco County PAO, FDOT
Date of Source Data: January 3, 2020

Data were acquired from various sources including but not limited to state, county, and local entities. Heidt Design does not warrant data provided by other sources for accuracy, or for any particular use that may require accurate information. This map is for informational purposes only and should not be substituted for a true title search, property appraisal, or survey.