

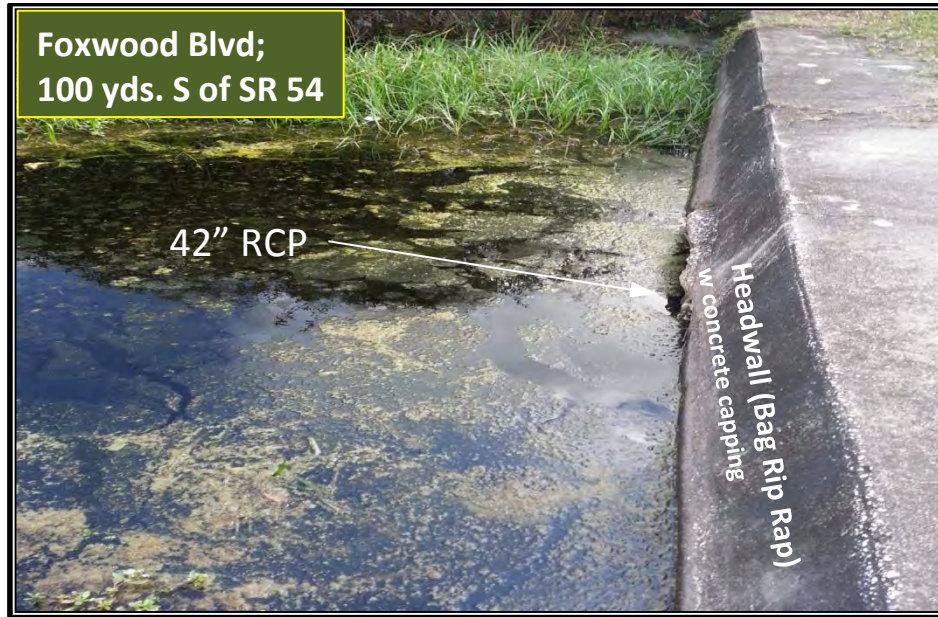


# FOX RIDGE SUBDIVISION EXISTING DRAINAGE SYSTEM ASSESSMENT

In response to the  
Municipal Service Benefit Unit (MSBU)

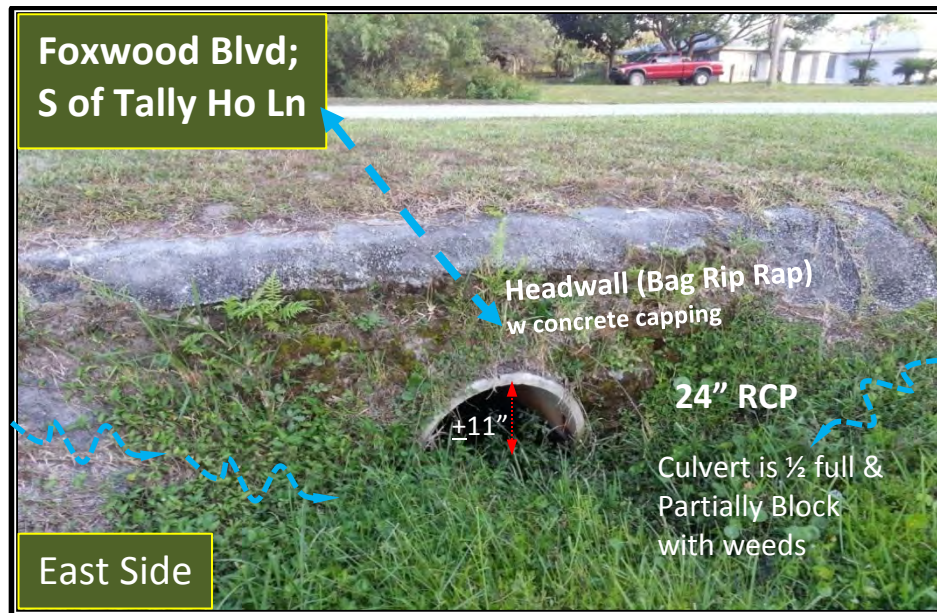
As established by the  
Pasco County  
Board of County Commissioners  
Resolution No. 14-286

## 1. Site Photos & Field Findings



Items No	Maintenance Item	Unit of Measure	Units	Cost per Unit	Sub Total
1	Mobilization of Crew and equipment	LS	1	\$1,642.50	\$1,642.50
2	Sediment Barrier aka Silt fence	LF	80	\$1.47	\$117.60
3	Floating Turbidity Barrier	LF	75	\$9.21	\$690.75
4	Clean & reshape ditch, spread <15ft w	SY	35	\$15.07	\$527.52
10	Hydro-vacuum of RCP 42" Ø	LF	80	\$10.33	\$826.40
13	Excavation of sediment in swale	CY	20	\$19.87	\$397.50
14	Clearing of Vegetation swale or ditch ,15LF w	SY	5	\$8.04	\$40.19
36	Seed & Mulch	SY	37	\$1.04	\$38.42
				<b>TOTAL</b>	<b>\$4,280.89</b>

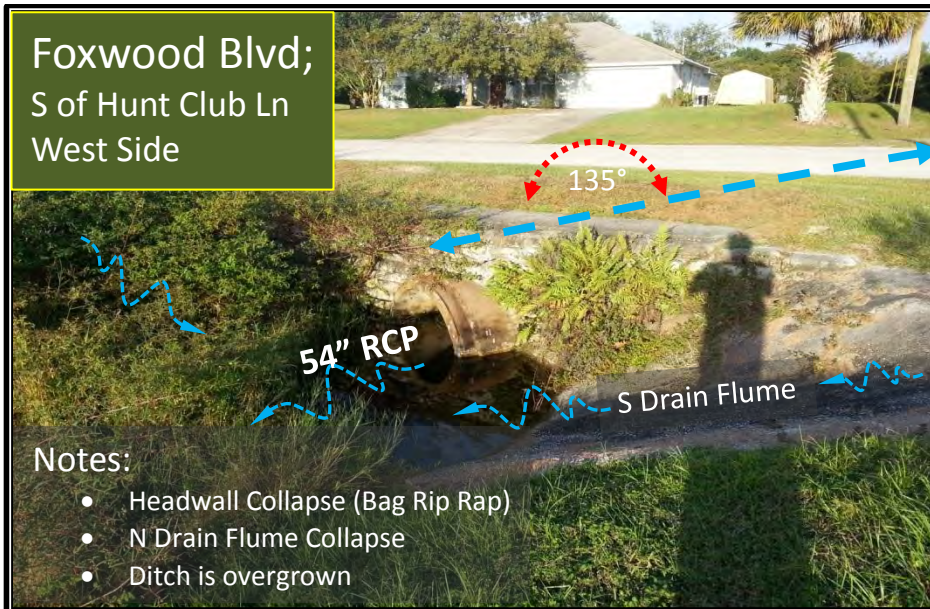




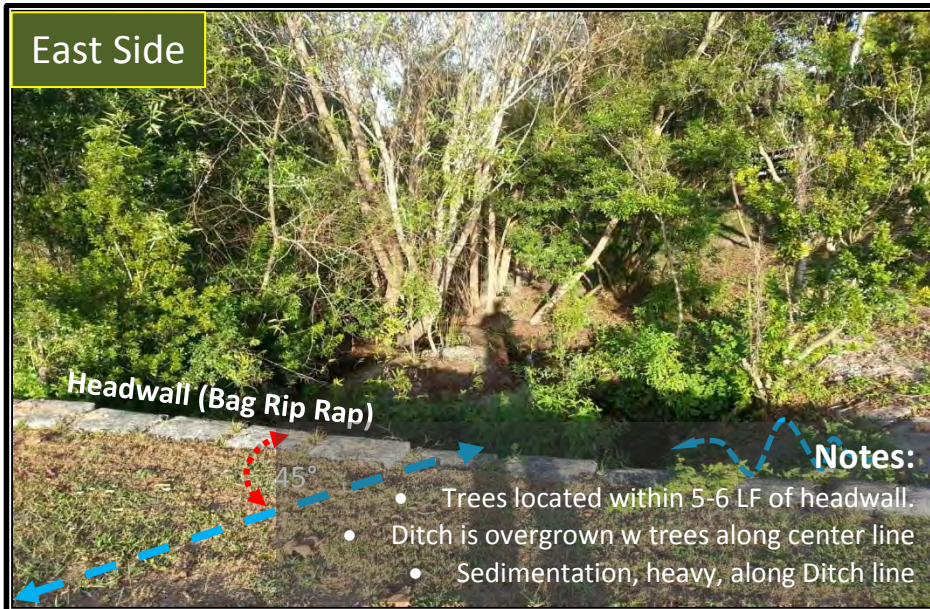
Items No	Maintenance Item	Unit of Measure	Units	Cost per Unit	Sub Total
1	Mobilization of Crew and equipment	LS	1	\$1,642.50	\$1,642.50
2	Sediment Barrier aka Silt fence	LF	40	\$1.47	\$58.80
4	Clean & reshape ditch, spread <15ft w	SY	25	\$15.07	\$376.80
7	Hydro-vacuum of RCP 24" Ø	LF	80	\$5.18	\$414.40
13	Excavation of sediment in swale	CY	10	\$19.87	\$198.75
14	Clearing of Vegetation swale or ditch ,15LF w	SY	30	\$8.04	\$241.16
15	Weeding and removal (hand) of debris from inlet throat	LS	1	\$34.95	\$34.95
36	Seed & Mulch	SY	35	\$1.04	\$36.35
				<b>TOTAL</b>	<b>\$3,003.70</b>



**Foxwood Blvd;  
S of Hunt Club Ln  
West Side**



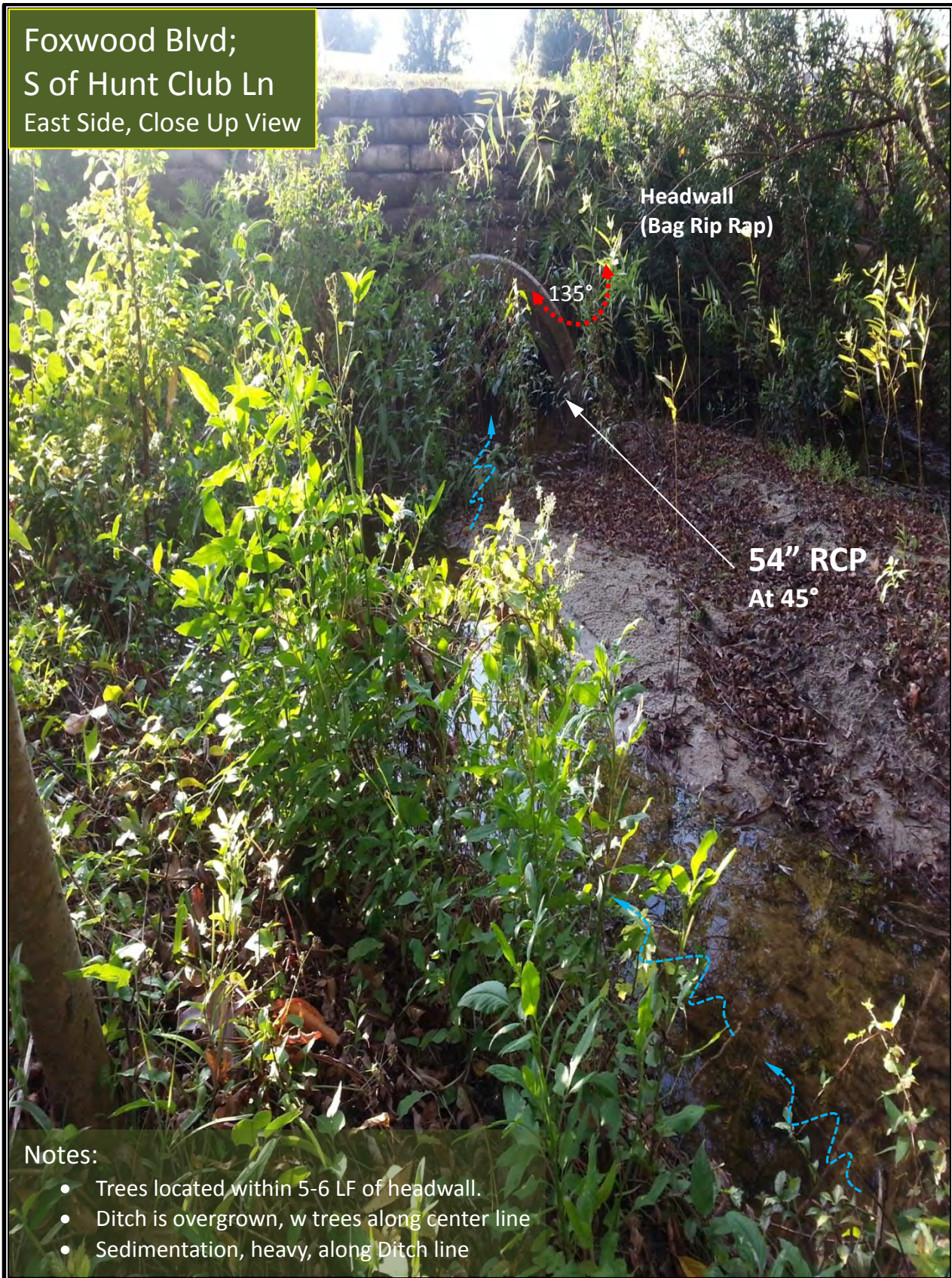
**East Side**



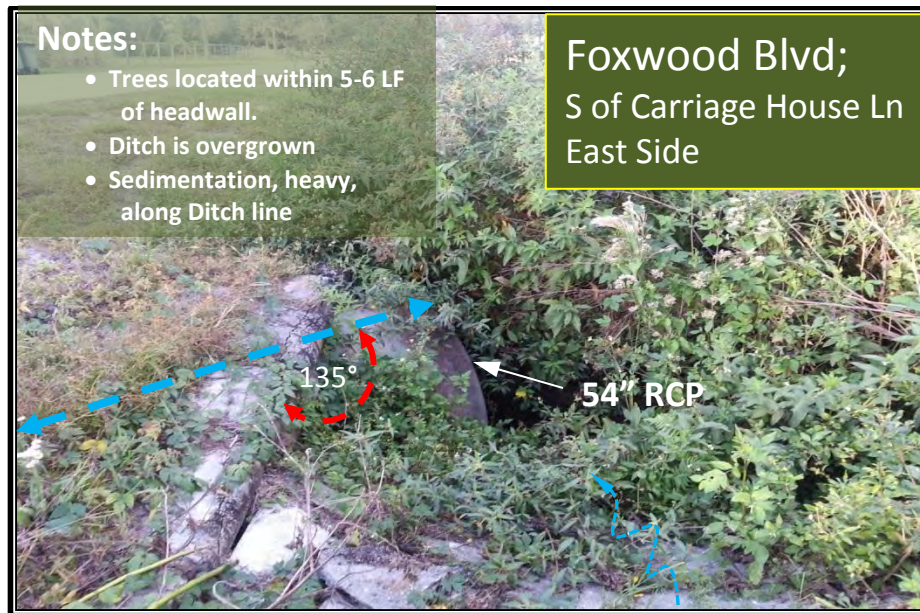
Items No	Maintenance Item	Unit of Measure	Units	Cost per Unit	Sub Total
1	Mobilization of Crew and equipment	LS	1	\$1,642.50	\$1,642.50
2	Sediment Barrier aka Silt fence	LF	30	\$1.47	\$44.10
4	Clean & reshape ditch, spread <15ft w	SY	50	\$15.07	\$753.60
5	Removal & disposal of damage outfall materials	LS		\$268.92	\$0.00
13	Excavation of sediment in swale	CY	20	\$19.87	\$397.50
14	Clearing of Vegetation swale or ditch ,15LF w	SY	35	\$8.04	\$281.35
25	Class I End wall, 54" Ø	EA	1	\$7,762.79	\$7,762.79
33	Concrete Ditch Pavement, Non reinforced, 4"	SY	5	\$64.50	\$322.48
35	Performance Sod	SY	20	\$4.14	\$82.77
36	Seed & Mulch	SY	25	\$1.04	\$25.96
37	Disposal of old structure materials and debris	LS	1	\$1,355.00	\$1,355.00
				<b>TOTAL</b>	<b>\$12,668.05</b>



Foxwood Blvd;  
S of Hunt Club Ln  
East Side, Close Up View



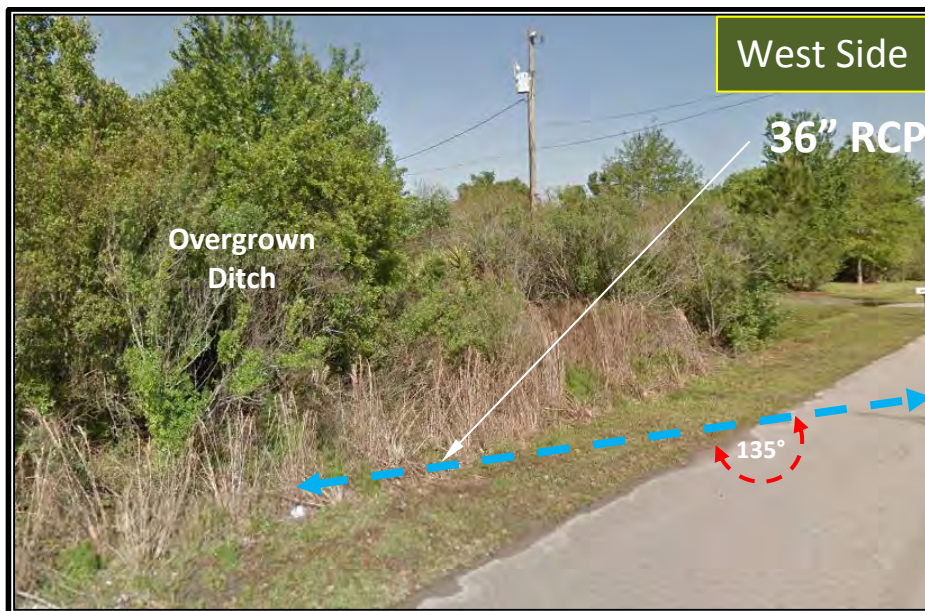
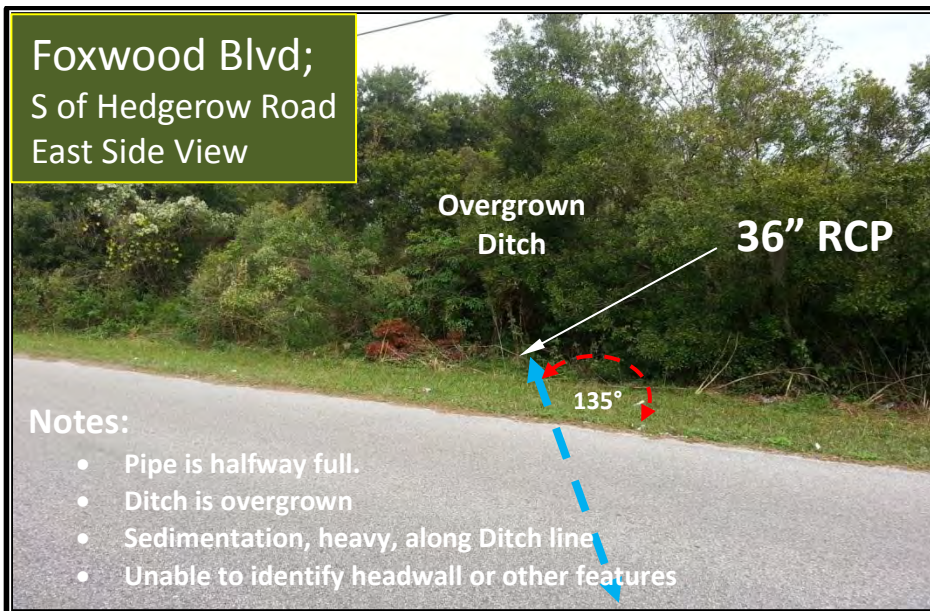




Items No	Maintenance Item	Unit of Measure	Units	Cost per Unit	Sub Total
1	Mobilization of Crew and equipment	LS	1	\$1,642.50	\$1,642.50
2	Sediment Barrier aka Silt fence	LF	40	\$1.47	\$58.80
4	Clean & reshape ditch, spread <15ft w	SY	50	\$15.07	\$753.60
5	Removal & disposal of damage outfall materials	LS		\$268.92	\$0.00
12	Hydro-vacuum of RCP 54" Ø	LF	75	\$17.53	\$1,314.75
13	Excavation of sediment in swale	CY	35	\$19.87	\$695.62
14	Clearing of Vegetation swale or ditch ,15LF w	SY	50	\$8.04	\$401.93
33	Concrete Ditch Pavement, Non reinforced, 4"	SY	5	\$64.50	\$322.48
36	Seed & Mulch	SY	55	\$1.04	\$57.12
				<b>TOTAL</b>	<b>\$5,246.79</b>



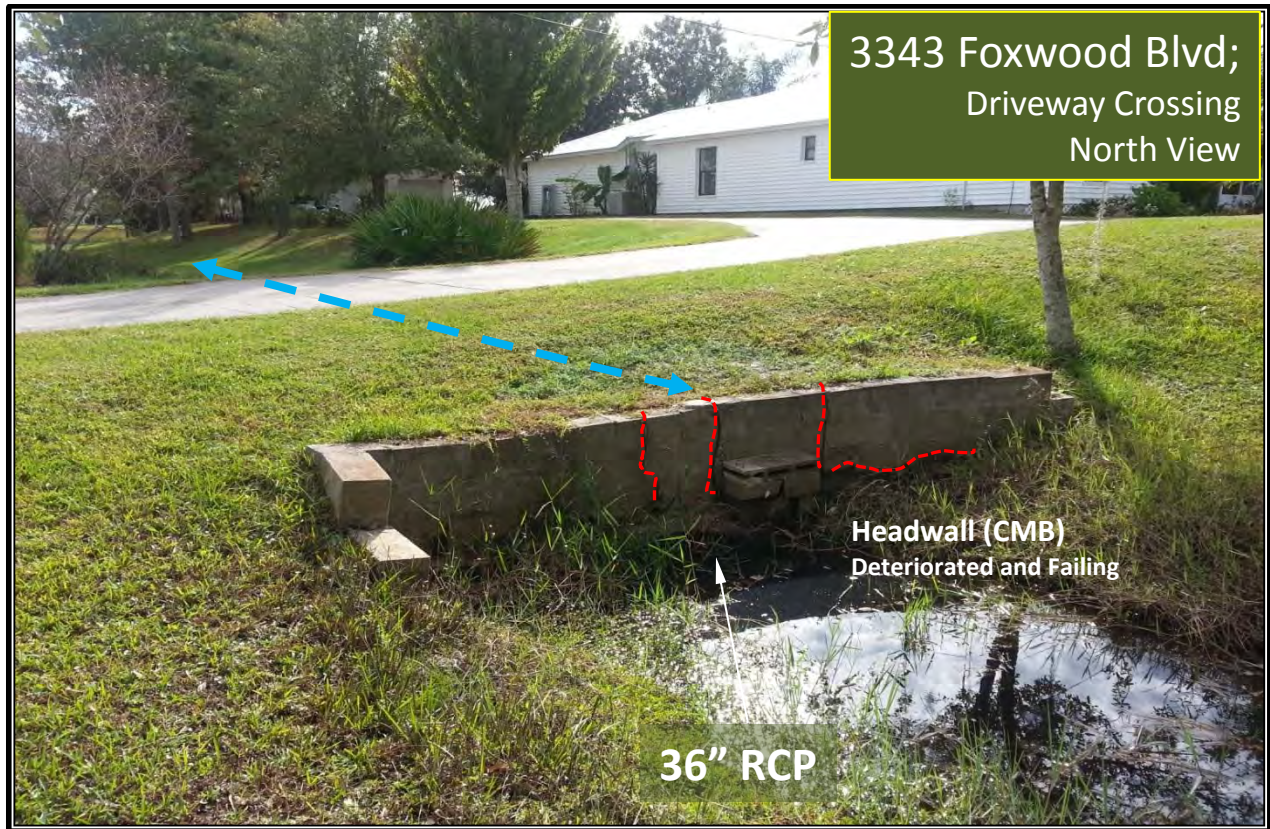
**Foxwood Blvd;  
S of Hedgerow Road  
East Side View**



Items No	Maintenance Item	Unit of Measure	Units	Cost per Unit	Sub Total
1	Mobilization of Crew and equipment	LS	1	\$1,642.50	\$1,642.50
2	Sediment Barrier aka Silt fence	LF	40	\$1.47	\$58.80
3	Floating Turbidity Barrier	LF	40	\$9.21	\$368.40
9	Hydro-vacuum of RCP 36" Ø	LF	50	\$6.42	\$321.00
13	Excavation of sediment in swale	CY	30	\$19.87	\$596.25
14	Clearing of Vegetation swale or ditch ,15LF w	SY	30	\$8.04	\$241.16
				<b>TOTAL</b>	<b>\$3,228.10</b>



## Private Ownership

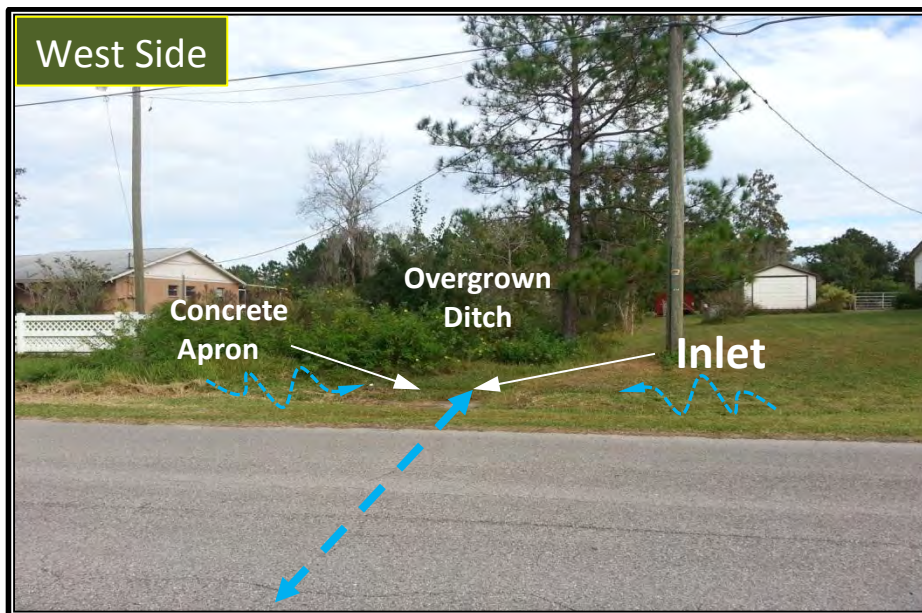


### Notes:

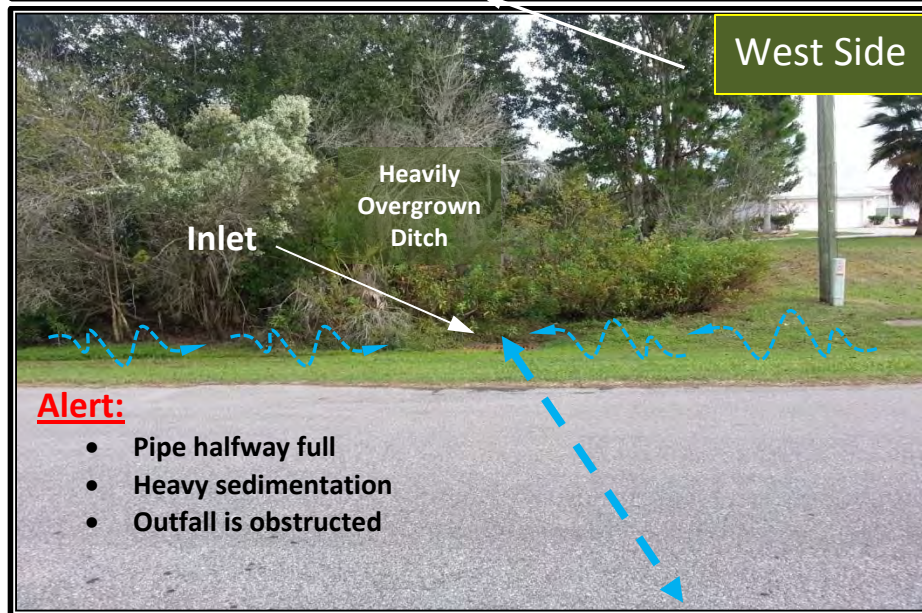
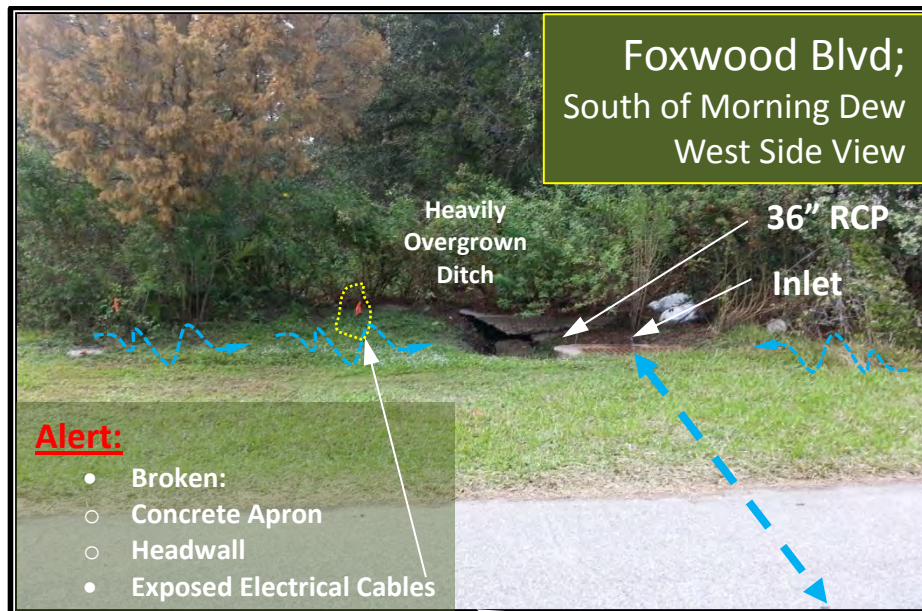
The condition of this privately owned infrastructure was not specifically cataloged during this investigation. However, maintenance of privately maintained structures, was quite variable. While some systems appeared to be in good condition and operational condition others showed evidence of lack of maintenance, example the location above depicted. Below is the estimate repairs cost.

Items No	Maintenance Item	Unit of Measure	Units	Cost per Unit	Sub Total
1	Mobilization of Crew and equipment	LS	1	\$1,642.50	\$1,642.50
2	Sediment Barrier aka Silt fence	LF	60	\$1.47	\$88.20
3	Floating Turbidity Barrier	LF	40	\$9.21	\$368.40
4	Clean & reshape ditch, spread <15ft w	SY	30	\$15.07	\$452.16
5	Removal & disposal of damage outfall materials	LS	1	\$268.92	\$268.92
9	Hydro-vacuum of RCP 36" Ø	LF	55	\$6.42	\$353.10
13	Excavation of sediment in swale	CY	20	\$19.87	\$397.50
16	Import Fill material	CY	3	\$104.85	\$314.55
17	Backfill and grading	LS	1	\$100.19	\$100.19
22	Class I End wall, 36" Ø	EA	1	\$3,003.03	\$3,003.03
35	Performance Sod	SY	25	\$4.14	\$103.46
36	Seed & Mulch	SY	25	\$1.04	\$25.96
37	Disposal of old structure materials and debris	LS	1	\$1,355.00	\$1,355.00
				<b>TOTAL</b>	<b>\$8,472.97</b>



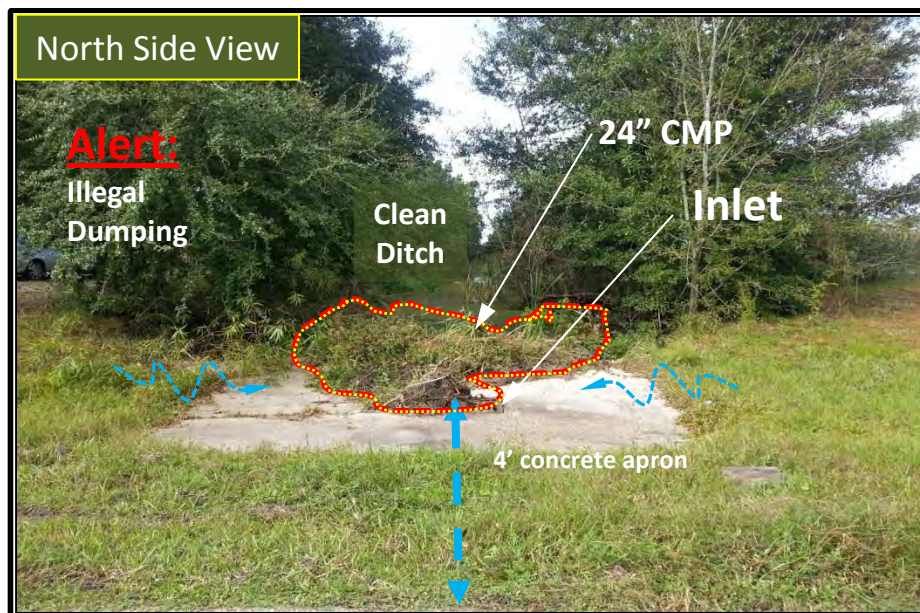
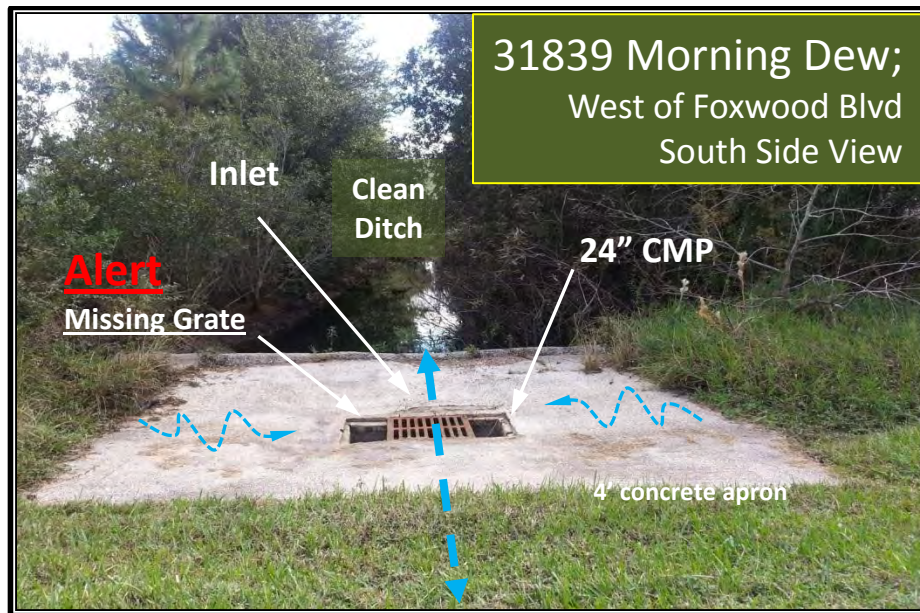


Items No	Maintenance Item	Unit of Measure	Units	Cost per Unit	Sub Total
1	Mobilization of Crew and equipment	LS	1	\$1,642.50	\$1,642.50
2	Sediment Barrier aka Silt fence	LF	40	\$1.47	\$58.80
3	Floating Turbidity Barrier	LF	40	\$9.21	\$368.40
4	Clean & reshape ditch, spread <15ft w	SY	30	\$15.07	\$452.16
7	Hydro-vacuum of RCP 24" Ø	LF	50	\$5.18	\$259.00
13	Excavation of sediment in swale	CY	20	\$19.87	\$397.50
36	Seed & Mulch	SY	35	\$1.04	\$36.35
				<b>TOTAL</b>	<b>\$3,214.71</b>



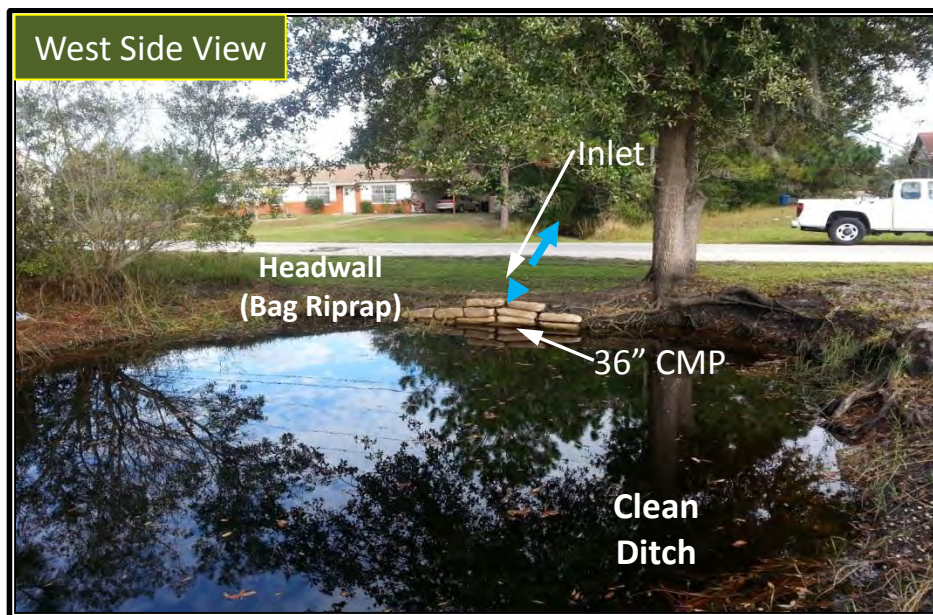
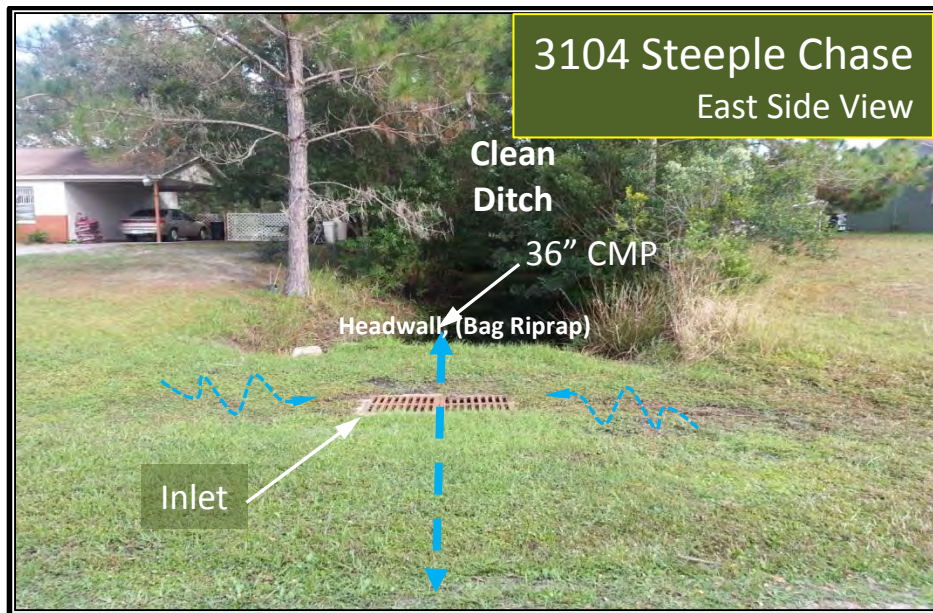
Items No	Maintenance Item	Unit of Measure	Units	Cost per Unit	Sub Total
1	Mobilization of Crew and equipment	LS	1	\$1,642.50	\$1,642.50
2	Sediment Barrier aka Silt fence	LF	40	\$1.47	\$58.80
3	Floating Turbidity Barrier	LF	40	\$9.21	\$368.40
4	Clean & reshape ditch, spread <15ft w	SY	25	\$15.07	\$376.80
5	Removal & disposal of damage outfall materials	LS	1	\$268.92	\$268.92
9	Hydro-vacuum of RCP 36" Ø	LF	50	\$6.42	\$321.00
13	Excavation of sediment in swale	CY	25	\$19.87	\$496.87
16	Import Fill material	CY	5	\$104.85	\$524.25
17	Backfill and grading	LS	1	\$100.19	\$100.19
22	Class I End wall, 36" Ø	EA	1	\$3,003.03	\$3,003.03
36	Seed & Mulch	SY	55	\$1.04	\$57.12
				<b>TOTAL</b>	<b>\$7,217.88</b>





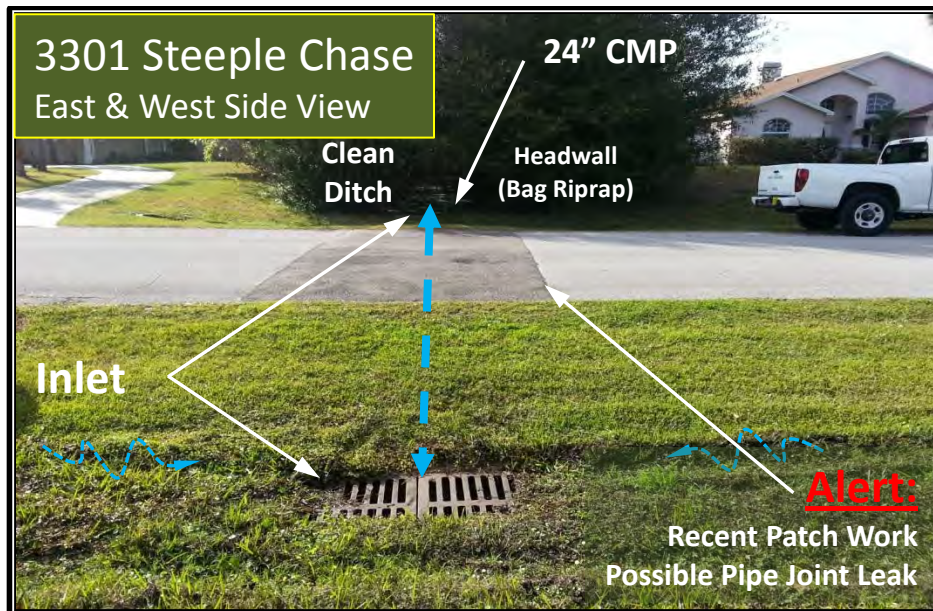
Items No	Maintenance Item	Unit of Measure	Units	Cost per Unit	Sub Total
1	Mobilization of Crew and equipment	LS	1	\$1,642.50	\$1,642.50
2	Sediment Barrier aka Silt fence	LF	60	\$1.47	\$88.20
3	Floating Turbidity Barrier	LF	60	\$9.21	\$552.60
4	Clean & reshape ditch, spread <15ft w	SY	25	\$15.07	\$376.80
5	Removal & disposal of damage outfall materials	LS	1	\$268.92	\$268.92
7	Hydro-vacuum of RCP 24" Ø	LF	50	\$5.18	\$259.00
13	Excavation of sediment in swale	CY	25	\$19.87	\$496.87
34	Ditch Bottom Inlet Grate, Traffic Rated, PC SMD pricing	EA	1	\$623.26	\$623.26
				<b>TOTAL</b>	<b>\$4,365.27</b>





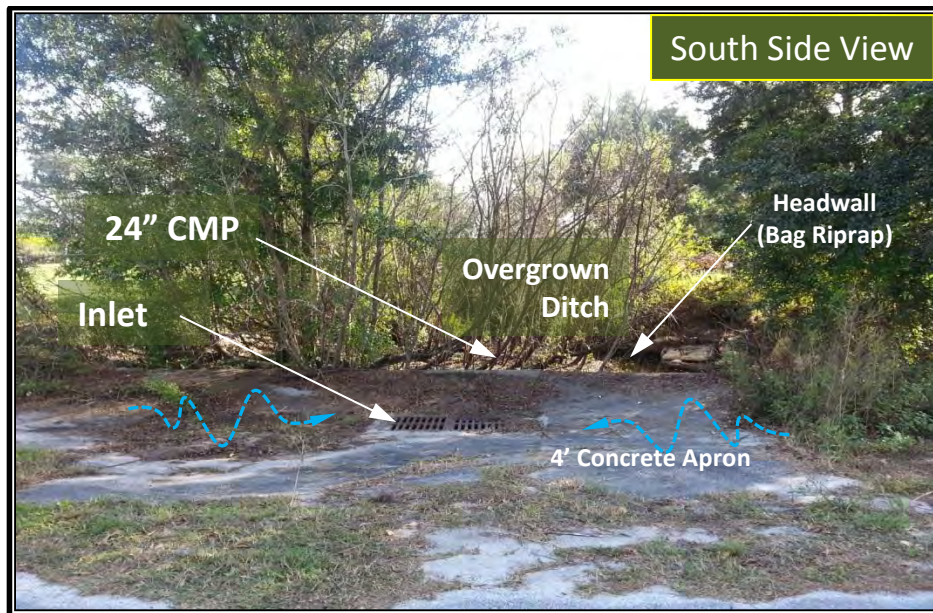
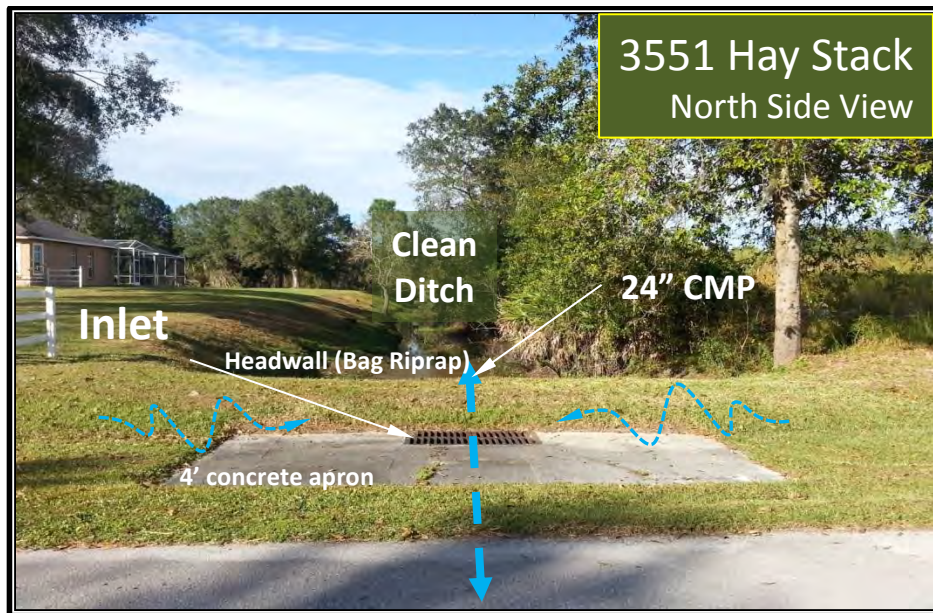
Items No	Maintenance Item	Unit of Measure	Units	Cost per Unit	Sub Total
1	Mobilization of Crew and equipment	LS	1	\$1,642.50	\$1,642.50
2	Sediment Barrier aka Silt fence	LF	60	\$1.47	\$88.20
3	Floating Turbidity Barrier	LF	60	\$9.21	\$552.60
4	Clean & reshape ditch, spread <15ft w	SY	25	\$15.07	\$376.80
9	Hydro-vacuum of RCP 36" Ø	LF	50	\$6.42	\$321.00
13	Excavation of sediment in swale	CY	10	\$19.87	\$198.75
36	Seed & Mulch	SY	30	\$1.04	\$31.16
				<b>TOTAL</b>	<b>\$3,211.00</b>





Items No	Maintenance Item	Unit of Measure	Units	Cost per Unit	Sub Total
1	Mobilization of Crew and equipment	LS	1	\$1,642.50	\$1,642.50
2	Sediment Barrier aka Silt fence	LF	50	\$1.47	\$73.50
3	Floating Turbidity Barrier	LF	50	\$9.21	\$460.50
4	Clean & reshape ditch, spread <15ft w	SY	30	\$15.07	\$452.16
7	Hydro-vacuum of RCP 24" Ø	LF	50	\$5.18	\$259.00
13	Excavation of sediment in swale	CY	25	\$19.87	\$496.87
27	Pipe Liner 24" Ø	LF	50	\$149.00	\$7,450.00
34	Clean, Root Cutting & CC TV 24" Ø	LF	50	\$12.50	\$625.00
40	Concrete Ditch Pavement, Non reinforced, 4"	SY	5	\$64.50	\$322.48
43	Seed & Mulch	SY	35	\$1.04	\$36.35
				<b>TOTAL</b>	<b>\$11,818.36</b>





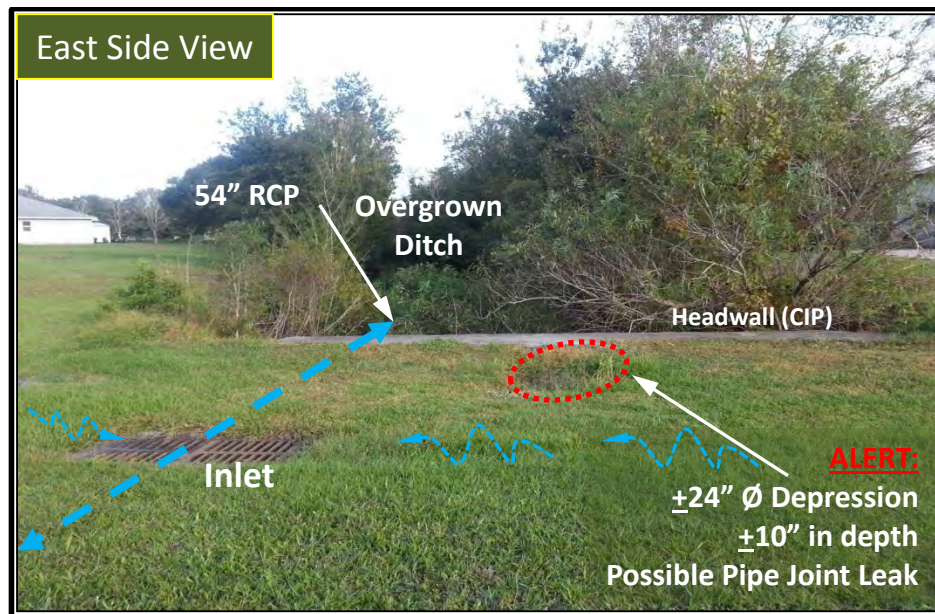
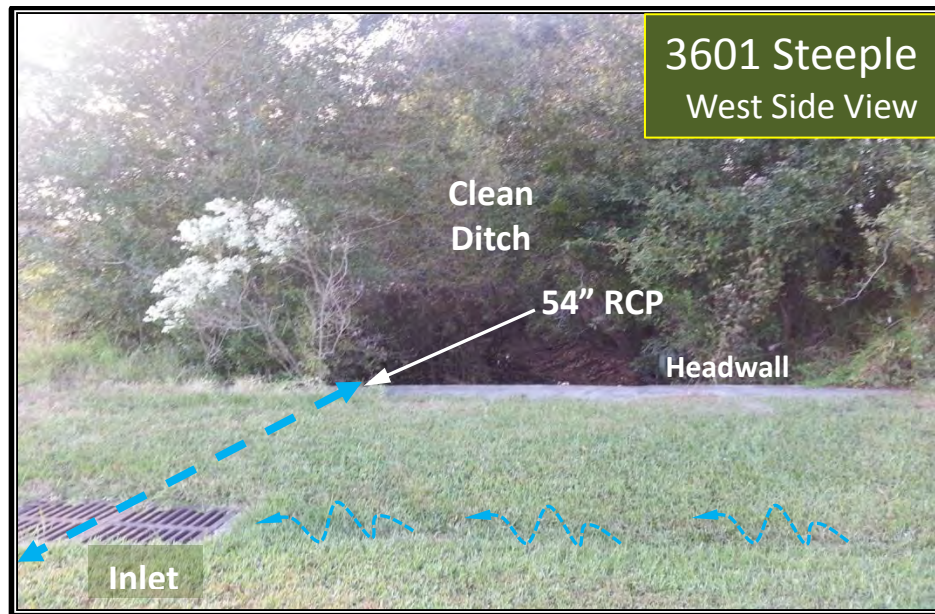
Items No	Maintenance Item	Unit of Measure	Units	Cost per Unit	Sub Total
1	Mobilization of Crew and equipment	LS	1	\$1,642.50	\$1,642.50
2	Sediment Barrier aka Silt fence	LF	60	\$1.47	\$88.20
3	Floating Turbidity Barrier	LF	50	\$9.21	\$460.50
4	Clean & reshape ditch, spread <15ft w	SY	25	\$15.07	\$376.80
7	Hydro-vacuum of RCP 24" Ø	LF	50	\$5.18	\$259.00
13	Excavation of sediment in swale	CY	20	\$19.87	\$397.50
15	Weeding and removal (hand) of debris from inlet throat	LS	1	\$34.95	\$34.95
36	Seed & Mulch	SY	30	\$1.04	\$31.16
				<b>TOTAL</b>	<b>\$3,290.60</b>





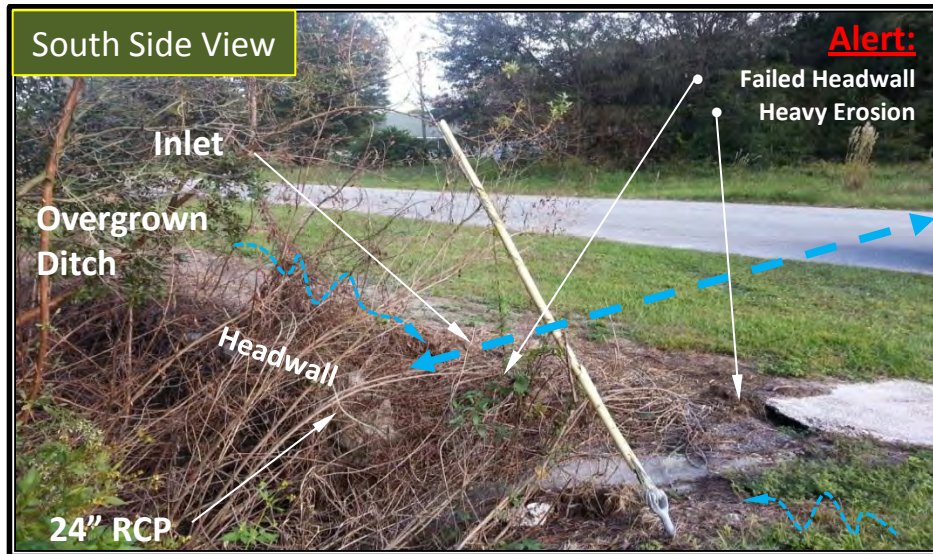
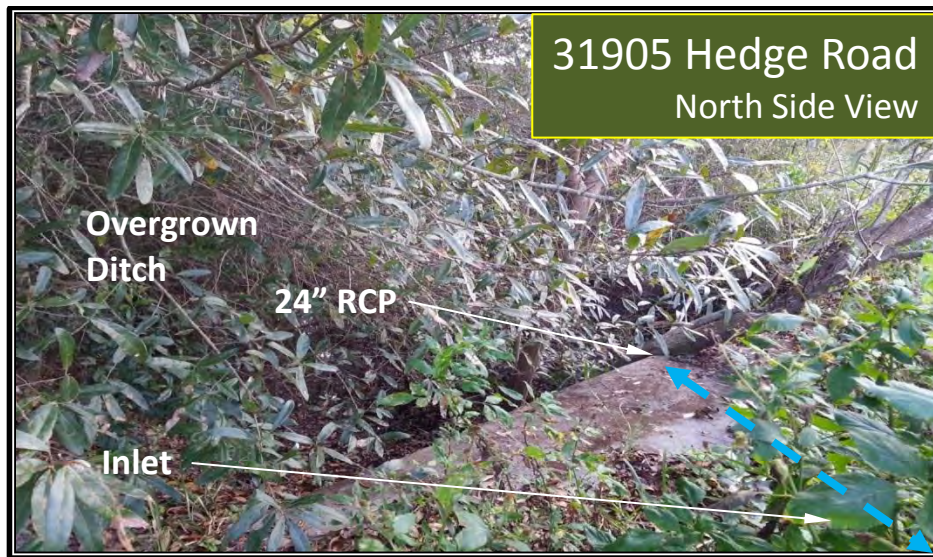
Items No	Maintenance Item	Unit of Measure	Units	Cost per Unit	Sub Total
1	Mobilization of Crew and equipment	LS	1	\$1,642.50	\$1,642.50
2	Sediment Barrier aka Silt fence	LF	60	\$1.47	\$88.20
3	Floating Turbidity Barrier	LF	25	\$9.21	\$230.25
4	Clean & reshape ditch, spread <15ft w	SY	0	\$15.07	\$0.00
5	Removal & disposal of damage outfall materials	LS	1	\$268.92	\$268.92
9	Hydro-vacuum of RCP 36" Ø	LF	70	\$6.42	\$449.40
13	Excavation of sediment in swale	CY	25	\$19.87	\$496.87
42	Performance Sod	SY	50	\$4.14	\$206.93
43	Seed & Mulch	SY	55	\$1.04	\$57.12
				<b>TOTAL</b>	<b>\$3,440.19</b>





Items No	Maintenance Item	Unit of Measure	Units	Cost per Unit	Sub Total
1	Mobilization of Crew and equipment	LS	1	\$1,642.50	\$1,642.50
2	Sediment Barrier aka Silt fence	LF	50	\$1.47	\$73.50
3	Floating Turbidity Barrier	LF	50	\$9.21	\$460.50
4	Clean & reshape ditch, spread <15ft w	SY	30	\$15.07	\$452.16
12	Hydro-vacuum of RCP 54" Ø	LF	50	\$17.53	\$876.50
13	Excavation of sediment in swale	CY	25	\$19.87	\$496.87
32	Pipe Liner 54" Ø	LF	50	\$600.52	\$30,026.00
39	Clean, Root Cutting & CC TV 54" Ø	LF	50	\$27.00	\$1,350.00
43	Seed & Mulch	SY	35	\$1.04	\$36.35
				<b>TOTAL</b>	<b>\$35,414.38</b>

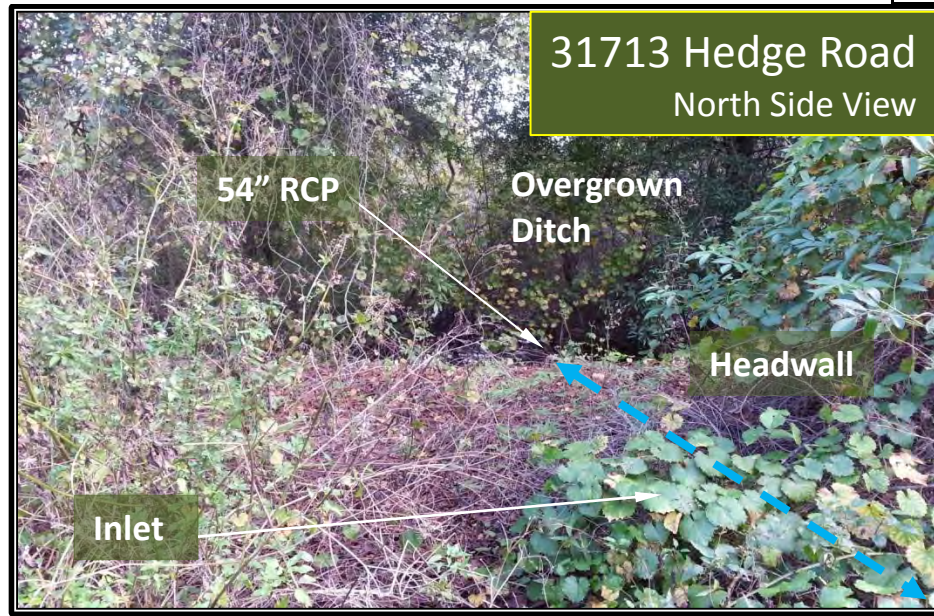




Items No	Maintenance Item	Unit of Measure	Units	Cost per Unit	Sub Total
1	Mobilization of Crew and equipment	LS	1	\$1,642.50	\$1,642.50
2	Sediment Barrier aka Silt fence	LF	60	\$1.47	\$88.20
3	Floating Turbidity Barrier	LF	60	\$9.21	\$552.60
4	Clean & reshape ditch, spread <15ft w	SY	50	\$15.07	\$753.60
7	Hydro-vacuum of RCP 24" Ø	LF	50	\$5.18	\$259.00
13	Excavation of sediment in swale	CY	25	\$19.87	\$496.87
14	Clearing of Vegetation swale or ditch ,15LF w	SY	50	\$8.04	\$401.93
15	Weeding and removal (hand) of debris from inlet throat	LS	1	\$34.95	\$34.95
16	Import Fill material	CY	5	\$104.85	\$524.25
17	Backfill and grading	LS	1	\$100.19	\$100.19
20	Class I End wall, 24" Ø	EA	1	\$1,484.94	\$1,484.94
40	Concrete Ditch Pavement, Non reinforced, 4"	SY	10	\$64.50	\$644.96
43	Seed & Mulch	SY	60	\$1.04	\$62.31

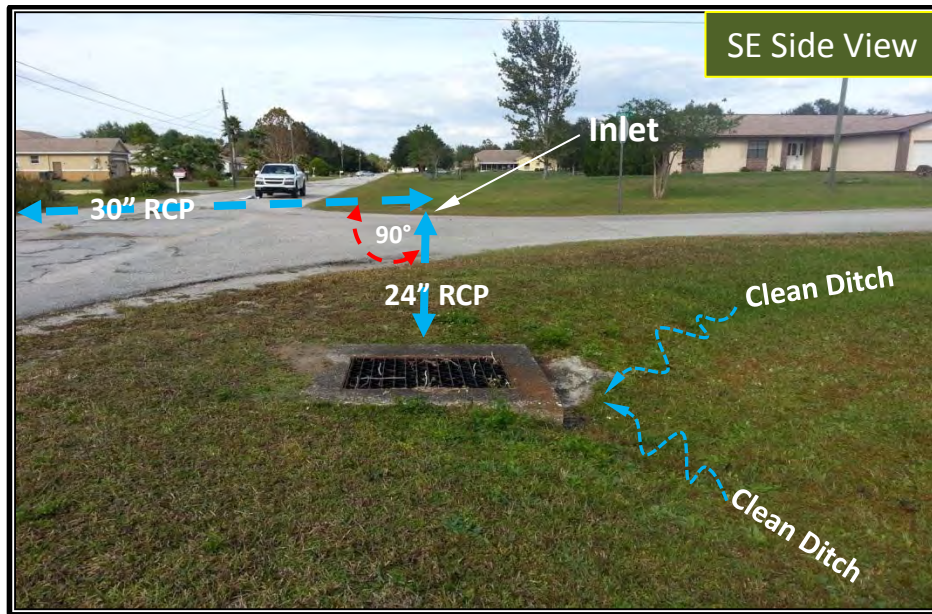
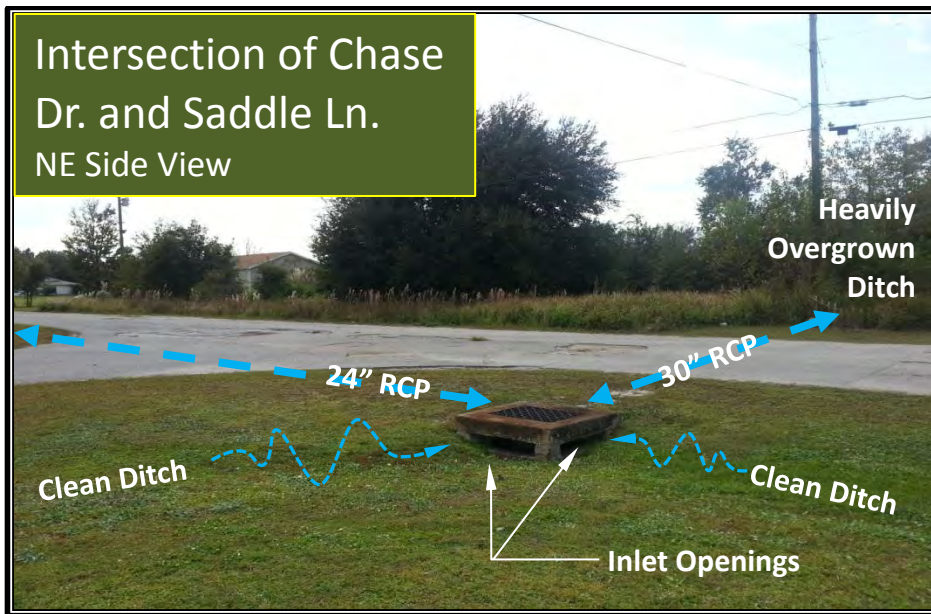


44	Disposal of old structure materials and debris	LS	1	\$1,355.00	\$1,355.00
				<b>TOTAL</b>	<b>\$8,401.29</b>



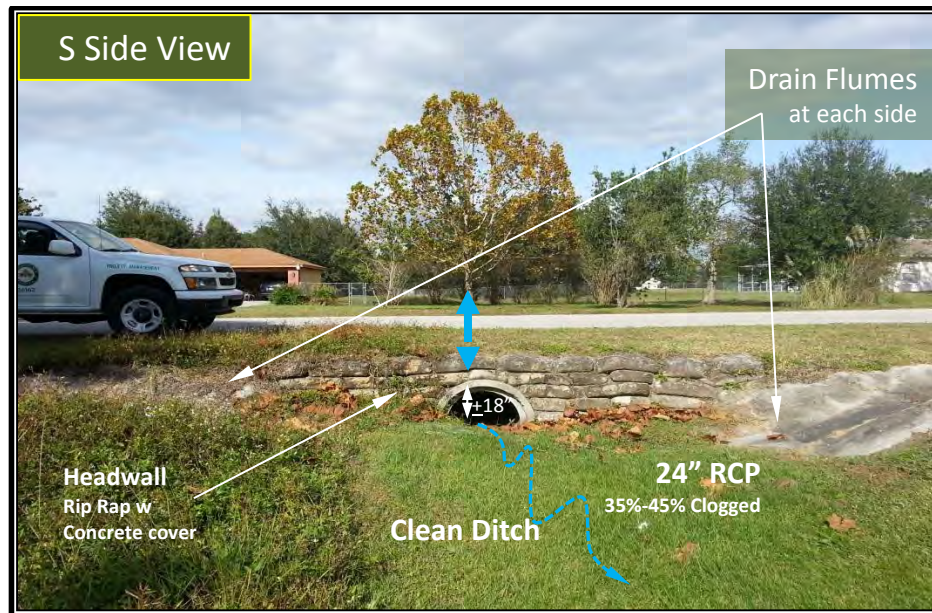
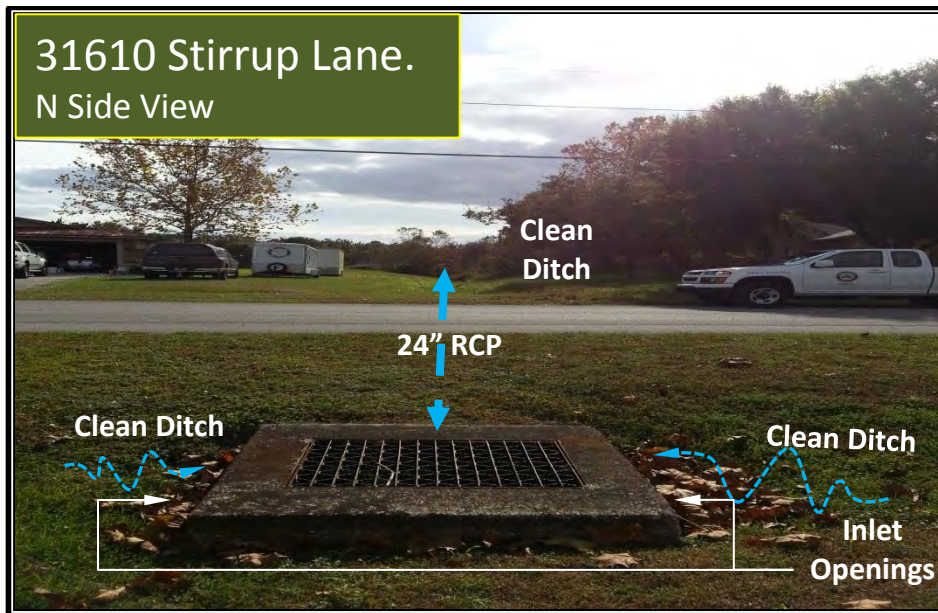
Items No	Maintenance Item	Unit of Measure	Units	Cost per Unit	Sub Total
1	Mobilization of Crew and equipment	LS	1	\$1,642.50	\$1,642.50
2	Sediment Barrier aka Silt fence	LF	50	\$1.47	\$73.50
3	Floating Turbidity Barrier	LF	50	\$9.21	\$460.50
4	Clean & reshape ditch, spread <15ft w	SY	30	\$15.07	\$452.16
12	Hydro-vacuum of RCP 54" Ø	LF	50	\$17.53	\$876.50
13	Excavation of sediment in swale	CY	25	\$19.87	\$496.87
14	Clearing of Vegetation swale or ditch ,15LF w	SY	30	\$8.04	\$241.16
15	Weeding and removal (hand) of debris from inlet throat	LS	1	\$34.95	\$34.95
43	Seed & Mulch	SY	35	\$1.04	\$36.35
				<b>TOTAL</b>	<b>\$4,314.49</b>





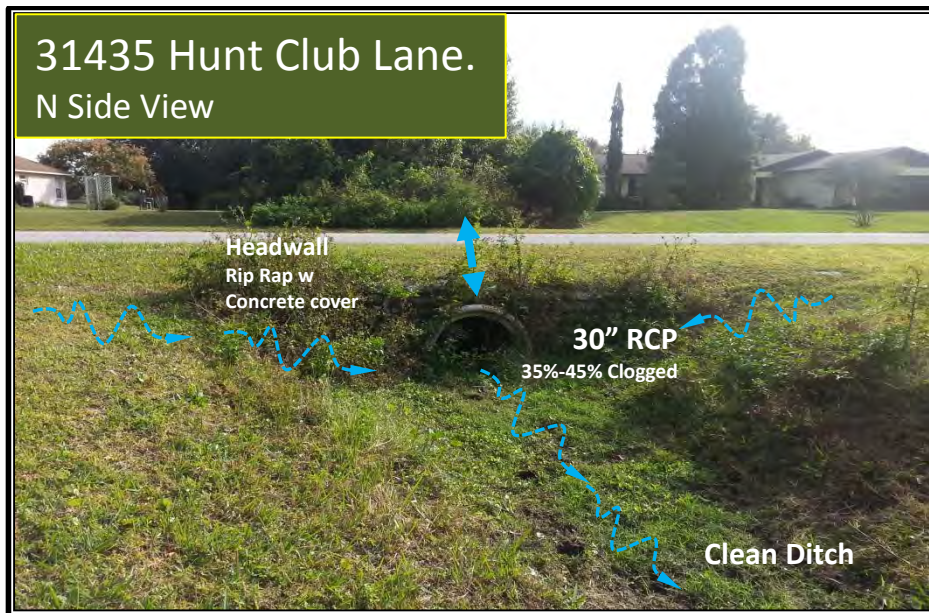
Items No	Maintenance Item	Unit of Measure	Units	Cost per Unit	Sub Total
1	Mobilization of Crew and Equipment	LS	1	\$1,642.50	\$1,642.50
2	Sediment Barrier aka Silt fence	LF	50	\$1.47	\$73.50
3	Floating Turbidity Barrier	LF	30	\$9.21	\$276.30
4	Clean & reshape ditch, spread <15ft w	SY	20	\$15.07	\$301.44
7	Hydro-vacuum of RCP 24" Ø	LF	50	\$5.18	\$259.00
8	Hydro-vacuum of RCP 30" Ø	LF	50	\$6.42	\$321.00
13	Excavation of sediment in swale	CY	20	\$19.87	\$397.50
14	Clearing of Vegetation swale or ditch ,15LF w	SY	20	\$8.04	\$160.77
43	Seed & Mulch	SY	40	\$1.04	\$41.54
				<b>TOTAL</b>	<b>\$3,473.55</b>





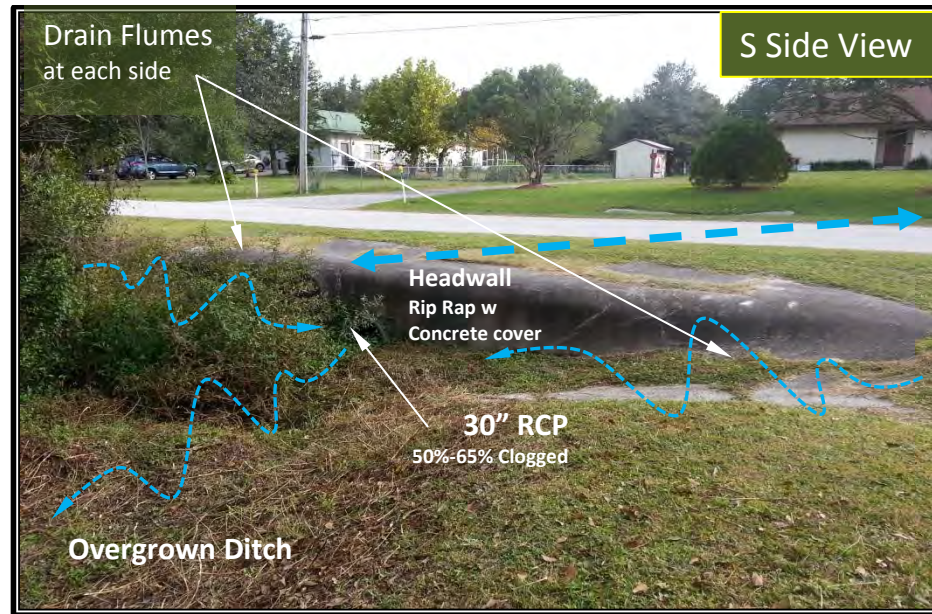
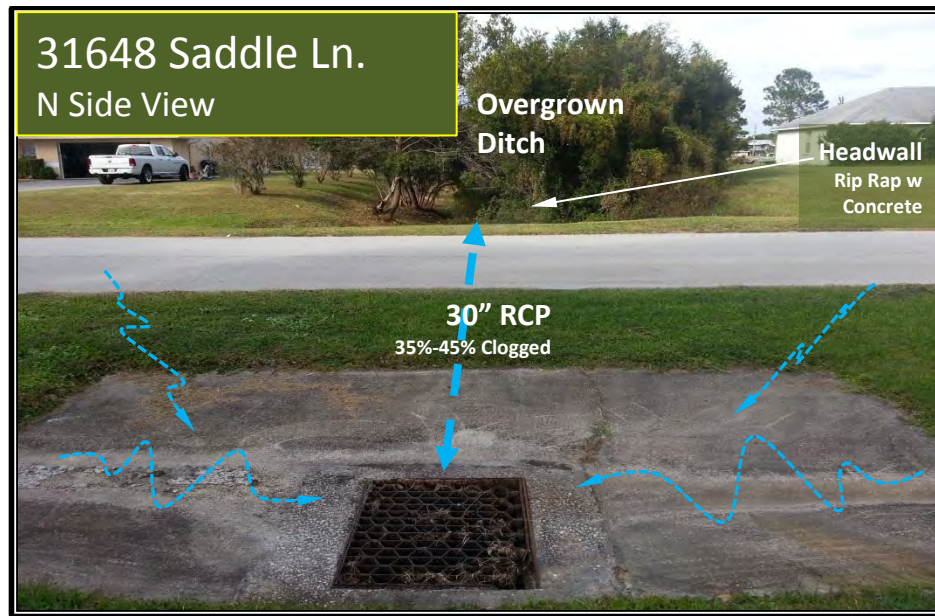
Items No	Maintenance Item	Unit of Measure	Units	Cost per Unit	Sub Total
1	Mobilization of Crew and equipment	LS	1	\$1,642.50	\$1,642.50
2	Sediment Barrier aka Silt fence	LF	50	\$1.47	\$73.50
4	Clean & reshape ditch, spread <15ft w	SY	30	\$15.07	\$452.16
7	Hydro-vacuum of RCP 24" Ø	LF	50	\$5.18	\$259.00
13	Excavation of sediment in swale	CY	5	\$19.87	\$99.37
14	Clearing of Vegetation swale or ditch ,15LF w	SY	10	\$8.04	\$80.39
42	Performance Sod	SY	50	\$4.14	\$206.93
43	Seed & Mulch	SY	50	\$1.04	\$51.93
				<b>TOTAL</b>	<b>\$2,865.77</b>





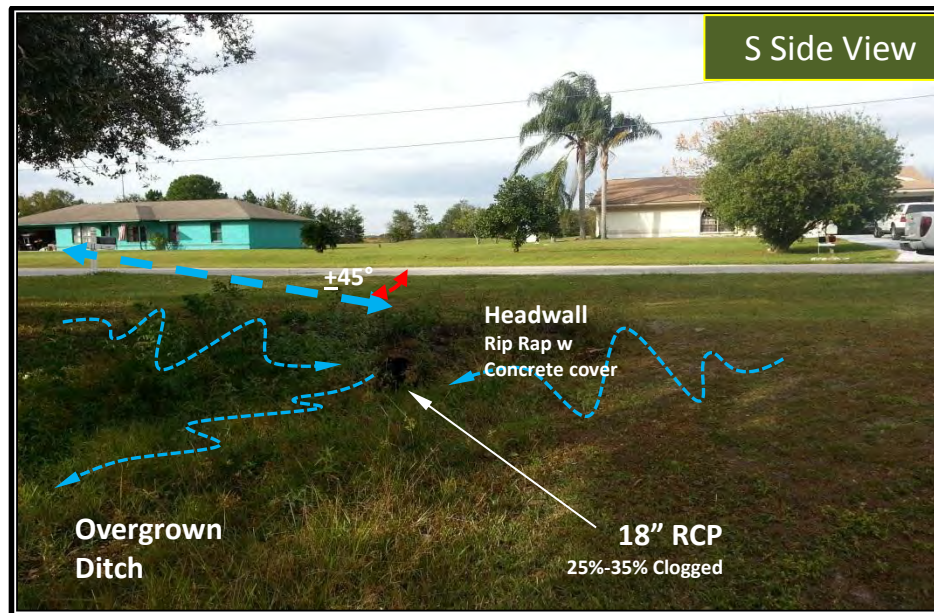
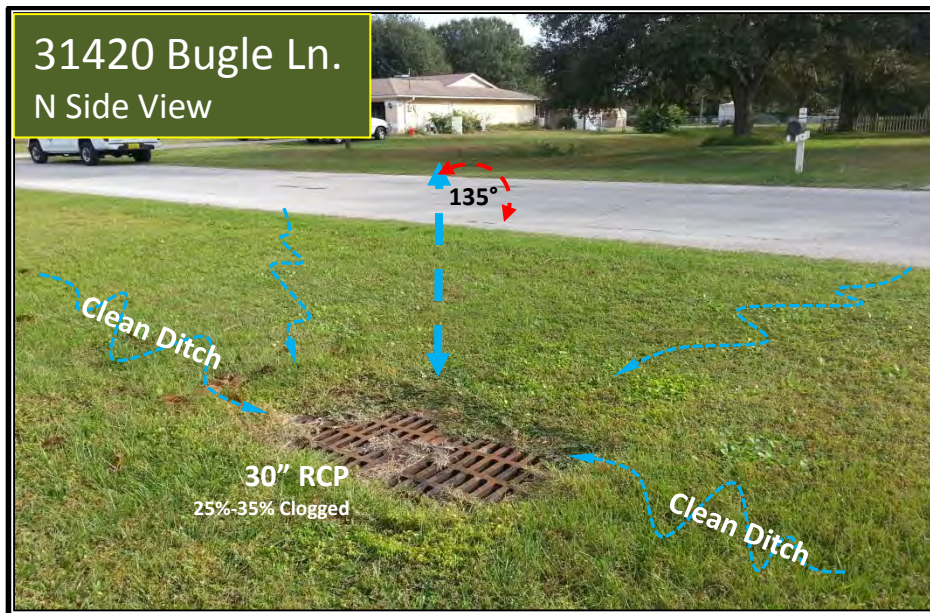
Items No	Maintenance Item	Unit of Measure	Units	Cost per Unit	Sub Total
1	Mobilization of Crew and equipment	LS	1	\$1,642.50	\$1,642.50
2	Sediment Barrier aka Silt fence	LF	50	\$1.47	\$73.50
4	Clean & reshape ditch, spread <15ft w	SY	50	\$15.07	\$753.60
8	Hydro-vacuum of RCP 30" Ø	LF	50	\$6.42	\$321.00
13	Excavation of sediment in swale	CY	25	\$19.87	\$496.87
14	Clearing of Vegetation swale or ditch ,15LF w	SY	25	\$8.04	\$200.96
42	Performance Sod	SY	25	\$4.14	\$103.46
43	Seed & Mulch	SY	50	\$1.04	\$51.93
44	Disposal of old structure materials and debris	LS	1	\$1,355.00	\$1,355.00
				<b>TOTAL</b>	<b>\$4,998.82</b>





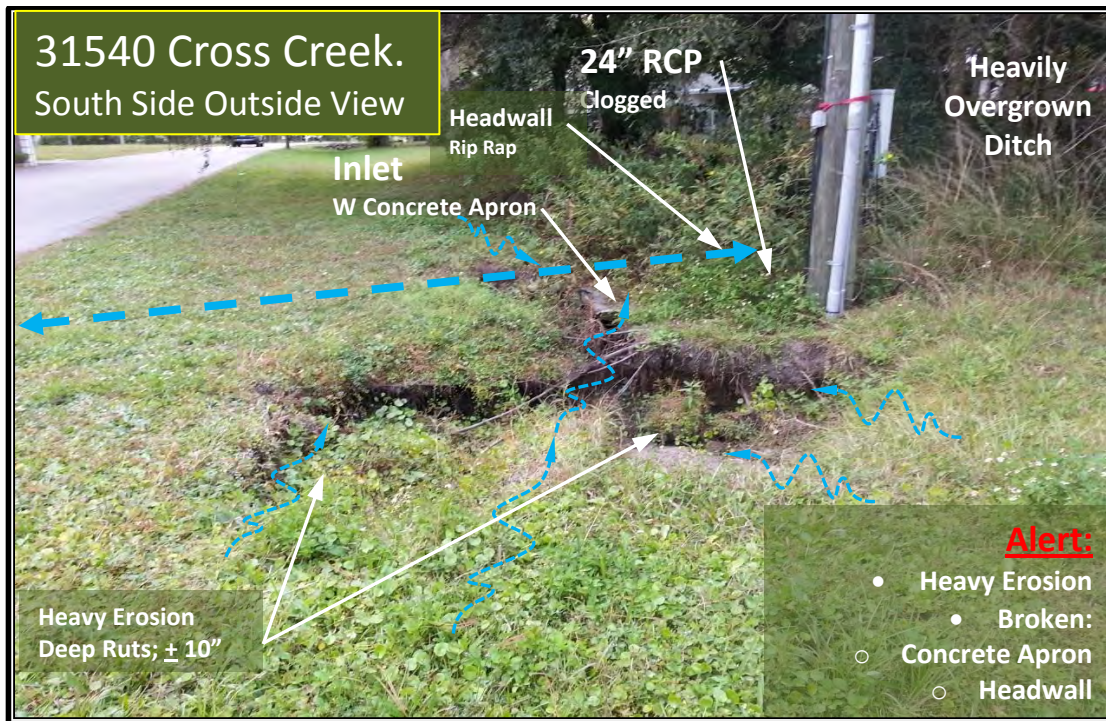
Items No	Maintenance Item	Unit of Measure	Units	Cost per Unit	Sub Total
1	Mobilization of Crew and equipment	LS	1	\$1,642.50	\$1,642.50
2	Sediment Barrier aka Silt fence	LF	50	\$1.47	\$73.50
3	Floating Turbidity Barrier	LF	50	\$9.21	\$460.50
4	Clean & reshape ditch, spread <15ft w	SY	30	\$15.07	\$452.16
8	Hydro-vacuum of RCP 30" Ø	LF	50	\$6.42	\$321.00
13	Excavation of sediment in swale	CY	25	\$19.87	\$496.87
14	Clearing of Vegetation swale or ditch ,15LF w	SY	30	\$8.04	\$241.16
43	Seed & Mulch	SY	50	\$1.04	\$51.93
				<b>TOTAL</b>	<b>\$3,739.61</b>



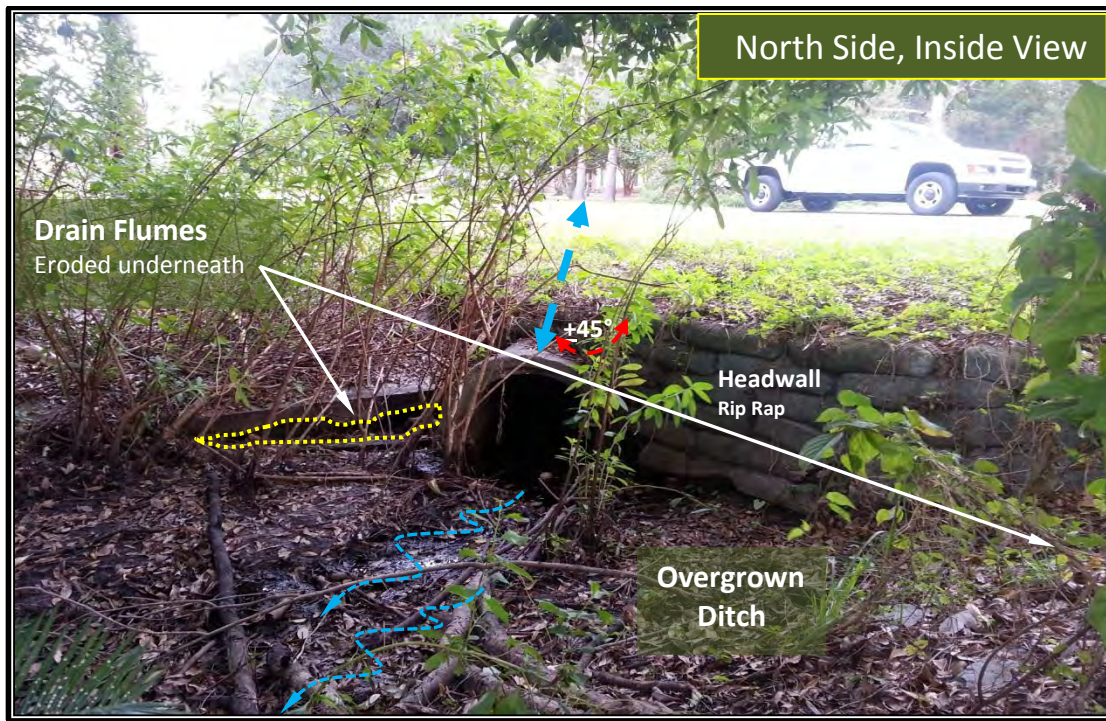


Items No	Maintenance Item	Unit of Measure	Units	Cost per Unit	Sub Total
1	Mobilization of Crew and equipment	LS	1	\$1,642.50	\$1,642.50
2	Sediment Barrier aka Silt fence	LF	50	\$1.47	\$73.50
3	Floating Turbidity Barrier	LF	50	\$9.21	\$460.50
4	Clean & reshape ditch, spread <15ft w	SY	20	\$15.07	\$301.44
6	Hydro-vacuum of RCP 18" Ø	LF	75	\$8.03	\$602.18
13	Excavation of sediment in swale	CY	12	\$19.87	\$238.50
42	Performance Sod	SY	40	\$4.14	\$165.54
43	Seed & Mulch	SY	30	\$1.04	\$31.16
				<b>TOTAL</b>	<b>\$3,515.31</b>



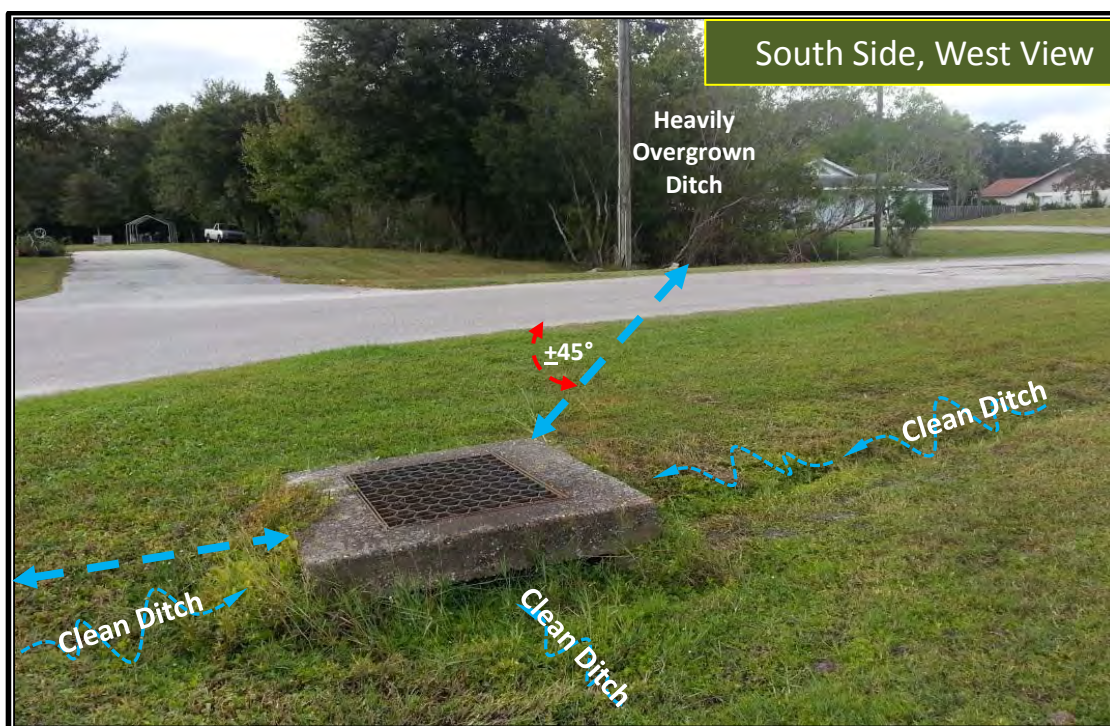
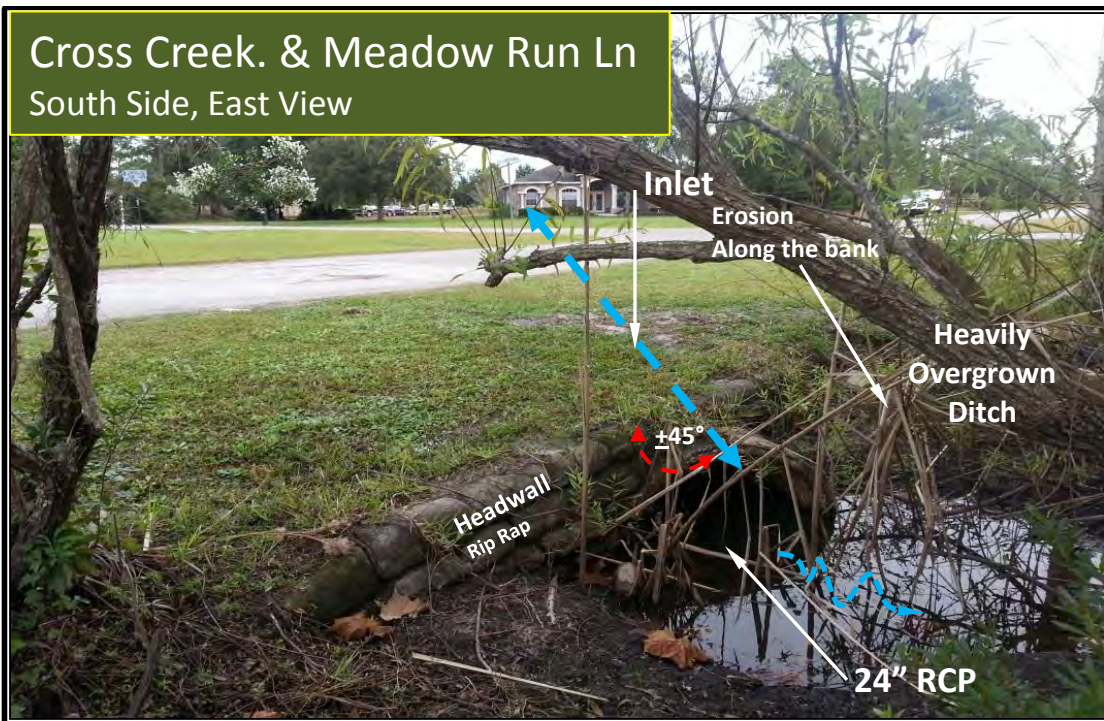






Items No	Maintenance Item	Unit of Measure	Units	Cost per Unit	Sub Total
1	Mobilization of Crew and equipment	LS	1	\$1,642.50	\$1,642.50
2	Sediment Barrier aka Silt fence	LF	50	\$1.47	\$73.50
4	Clean & reshape ditch, spread <15ft w	SY	50	\$15.07	\$753.60
5	Removal & disposal of damage outfall materials	LS	1	\$268.92	\$268.92
7	Hydro-vacuum of RCP 24" Ø	LF	80	\$5.18	\$414.40
13	Excavation of sediment in swale	CY	25	\$19.87	\$496.87
14	Clearing of Vegetation swale or ditch , 15LF w	SY	30	\$8.04	\$241.16
15	Weeding and removal (hand) of debris from inlet throat	LS	1	\$34.95	\$34.95
16	Import Fill material	CY	5	\$104.85	\$524.25
17	Backfill and grading	LS	1	\$100.19	\$100.19
27	Pipe Liner 24" Ø	LF	80	\$149.00	\$11,920.00
33	Clean, Root Cutting & CC TV 18" Ø	LF	80	\$10.00	\$800.00
39	Clean, Root Cutting & CC TV 54" Ø	LF	50	\$27.00	\$1,350.00
40	Concrete Ditch Pavement, Non reinforced, 4"	SY	3	\$64.50	\$193.49
42	Performance Sod	SY	35	\$4.14	\$144.85
43	Seed & Mulch	SY	35	\$1.04	\$36.35
44	Disposal of old structure materials and debris	LS	1	\$1,355.00	\$1,355.00
				<b>TOTAL</b>	<b>\$20,350.02</b>



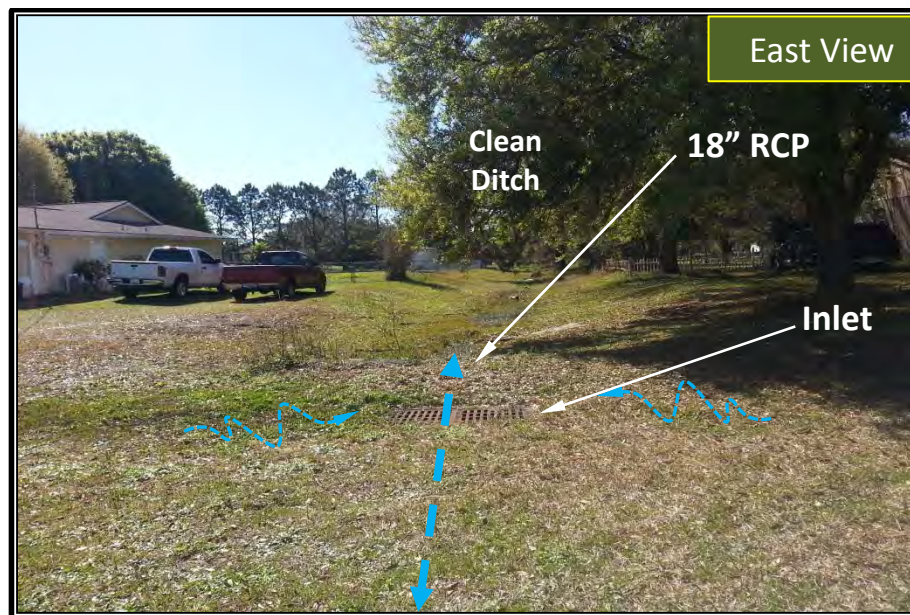
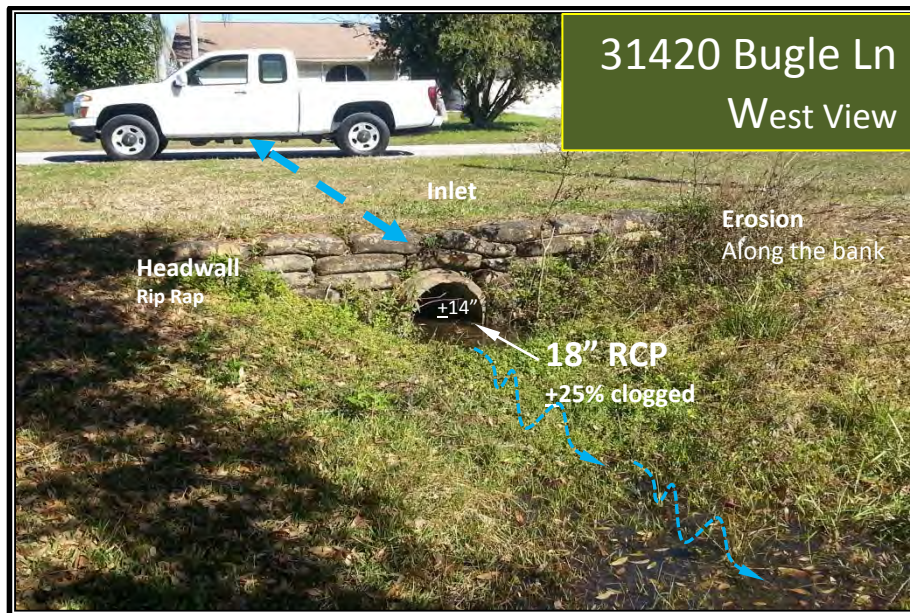






Items No	Maintenance Item	Unit of Measure	Units	Cost per Unit	Sub Total
1	Mobilization of Crew and equipment	LS	1	\$1,642.50	\$1,642.50
2	Sediment Barrier aka Silt fence	LF	80	\$1.47	\$117.60
3	Floating Turbidity Barrier	LF	25	\$9.21	\$230.25
4	Clean & reshape ditch, spread <15ft w	SY	30	\$15.07	\$452.16
7	Hydro-vacuum of RCP 24" Ø	LF	140	\$5.18	\$725.20
13	Excavation of sediment in swale	CY	25	\$19.87	\$496.87
14	Clearing of Vegetation swale or ditch ,15LF w	SY	30	\$8.04	\$241.16
15	Weeding and removal (hand) of debris from inlet throat	LS	1	\$34.95	\$34.95
16	Import Fill material	CY	2	\$104.85	\$209.70
17	Backfill and grading	LS	1	\$100.19	\$100.19
42	Performance Sod	SY	20	\$4.14	\$82.77
43	Seed & Mulch	SY	35	\$1.04	\$36.35
				<b>TOTAL</b>	<b>\$4,369.70</b>

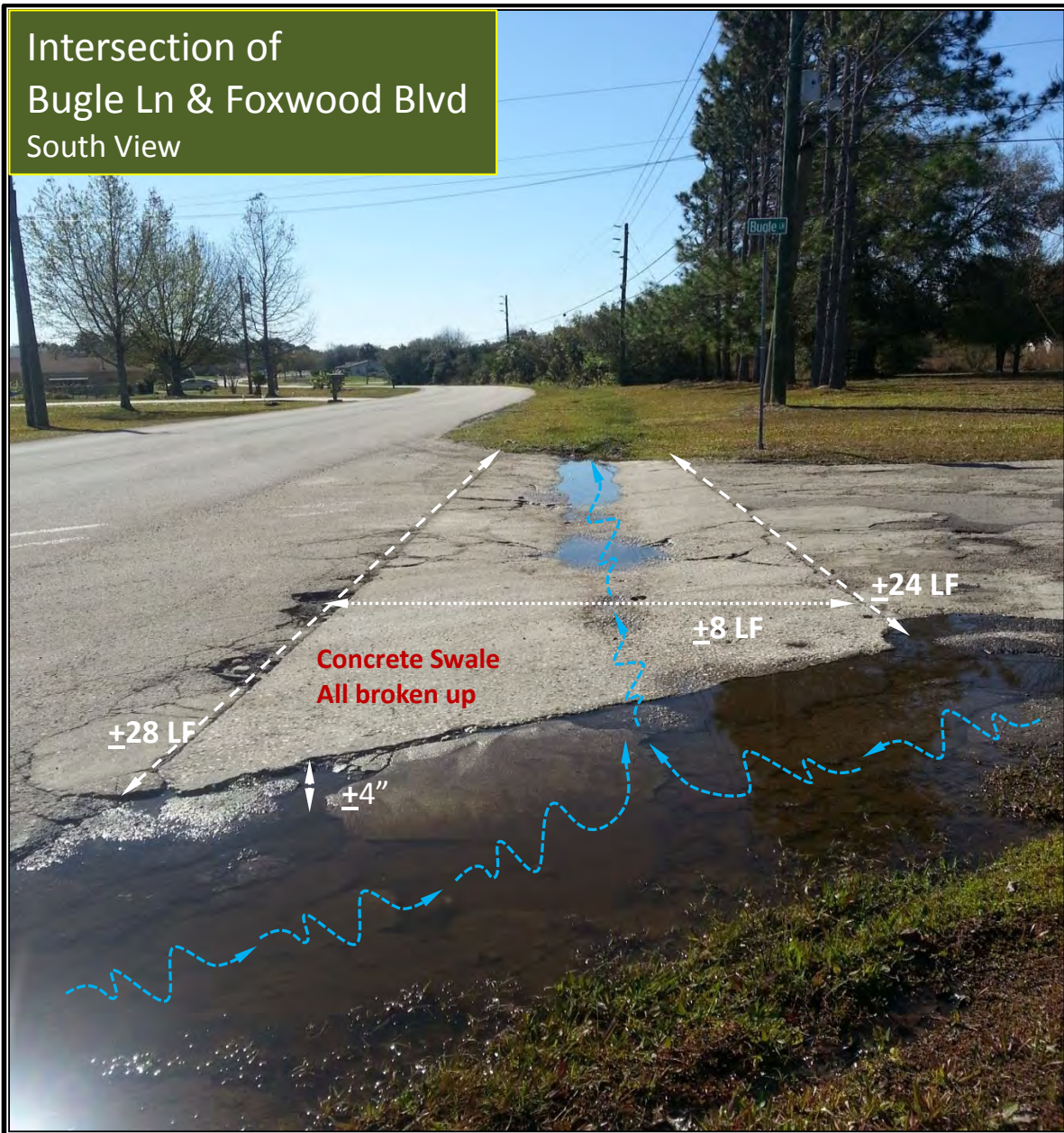




Items No	Maintenance Item	Unit of Measure	Units	Cost per Unit	Sub Total
1	Mobilization of Crew and equipment	LS	1	\$1,642.50	\$1,642.50
2	Sediment Barrier aka Silt fence	LF	50	\$1.47	\$73.50
4	Clean & reshape ditch, spread <15ft w	SY	30	\$15.07	\$452.16
6	Hydro-vacuum of RCP 18" Ø	LF	50	\$8.03	\$401.45
13	Excavation of sediment in swale	CY	5	\$19.87	\$99.37
42	Performance Sod	SY		\$4.14	\$0.00
43	Seed & Mulch	SY	35	\$1.04	\$36.35
				<b>TOTAL</b>	<b>\$2,705.33</b>



# Intersection of Bugle Ln & Foxwood Blvd South View



Items No	Maintenance Item	Unit of Measure	Units	Cost per Unit	Sub Total
1	Mobilization of Crew and equipment	LS	1	\$1,642.50	\$1,642.50
2	Sediment Barrier aka Silt fence	LF	50	\$1.47	\$73.50
4	Clean & reshape ditch, spread <15ft w	SY	25	\$15.07	\$376.80
5	Removal & disposal of damage outfall materials	LS	1	\$268.92	\$268.92
14	Clearing of Vegetation swale or ditch ,15LF w	SY	10	\$8.04	\$80.39
17	Backfill and grading	LS	1	\$100.19	\$100.19
40	Concrete Ditch Pavement, Non reinforced, 4"	SY	25	\$64.50	\$1,612.39
42	Performance Sod	SY	25	\$4.14	\$103.46
43	Seed & Mulch	SY	35	\$1.04	\$36.35
44	Disposal of old structure materials and debris	LS	1	\$1,355.00	\$1,355.00
				<b>TOTAL</b>	<b>\$5,649.49</b>

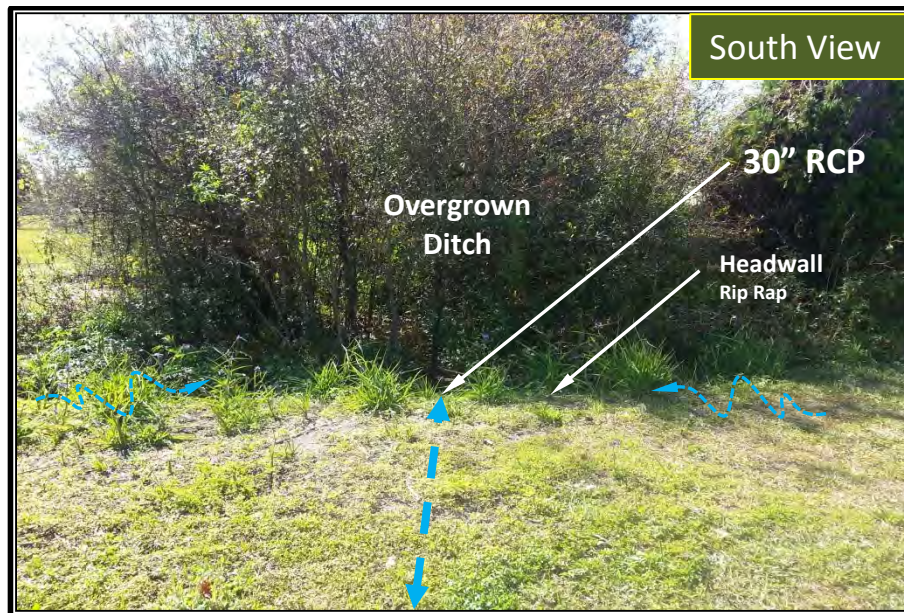
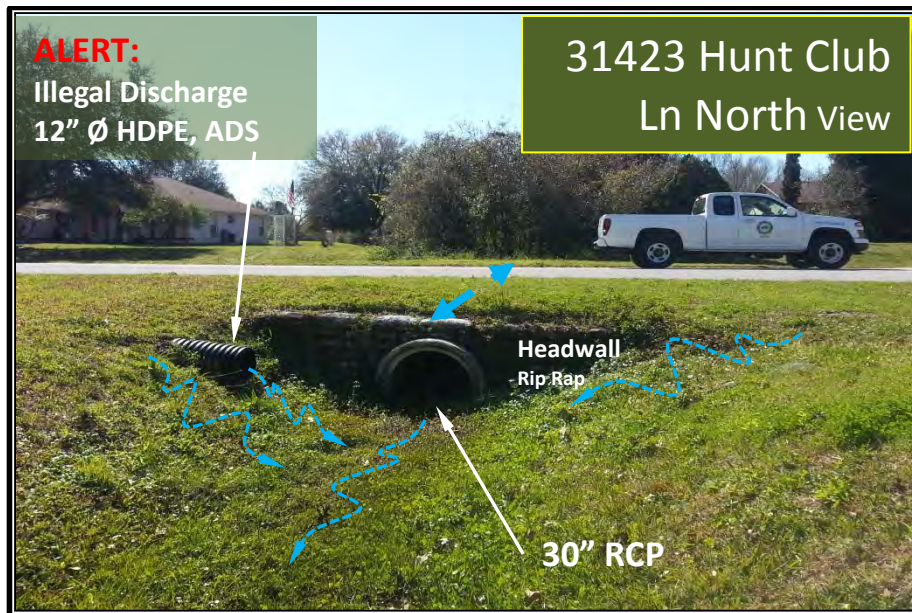


# Intersection of Fox Ridge Blvd & Cantor Rd South View



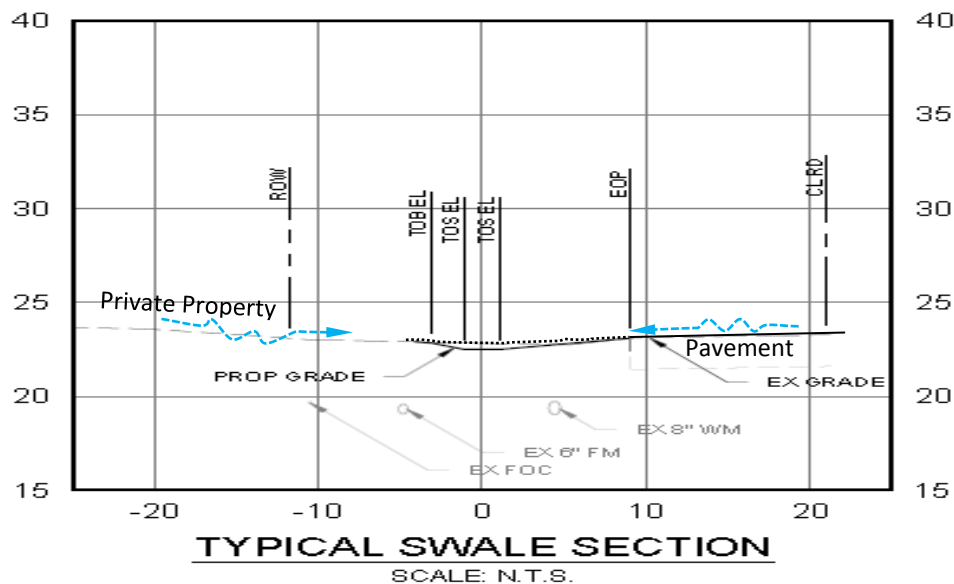
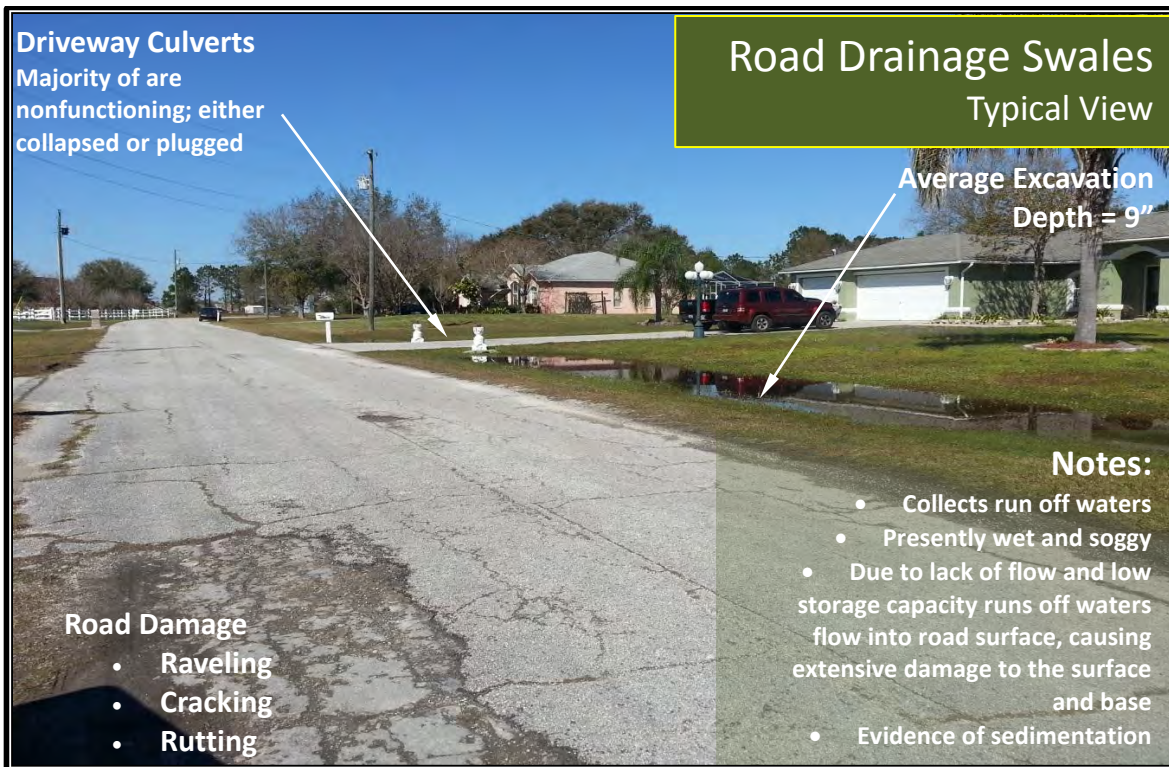
Item s No	Maintenance Item	Unit of Measur e	Units	Cost per Unit	Sub Total
1	Mobilization of Crew and equipment	LS	1	\$1,642.50	\$1,642.50
2	Sediment Barrier aka Silt fence	LF	50	\$1.47	\$73.50
4	Clean & reshape ditch, spread <15ft w	SY	25	\$15.07	\$376.80
5	Removal & disposal of damage outfall materials	LS	1	\$268.92	\$268.92
14	Clearing of Vegetation swale or ditch ,15LF w	SY	10	\$8.04	\$80.39
17	Backfill and grading	LS	1	\$100.19	\$100.19
33	Concrete Ditch Pavement, Non reinforced, 4"	SY	25	\$64.50	\$1,612.39
35	Performance Sod	SY	25	\$4.14	\$103.46
36	Seed & Mulch	SY	35	\$1.04	\$36.35
37	Disposal of old structure materials and debris	LS	1	\$1,355.00	\$1,355.00
				<b>TOTAL</b>	<b>\$5,649.49</b>





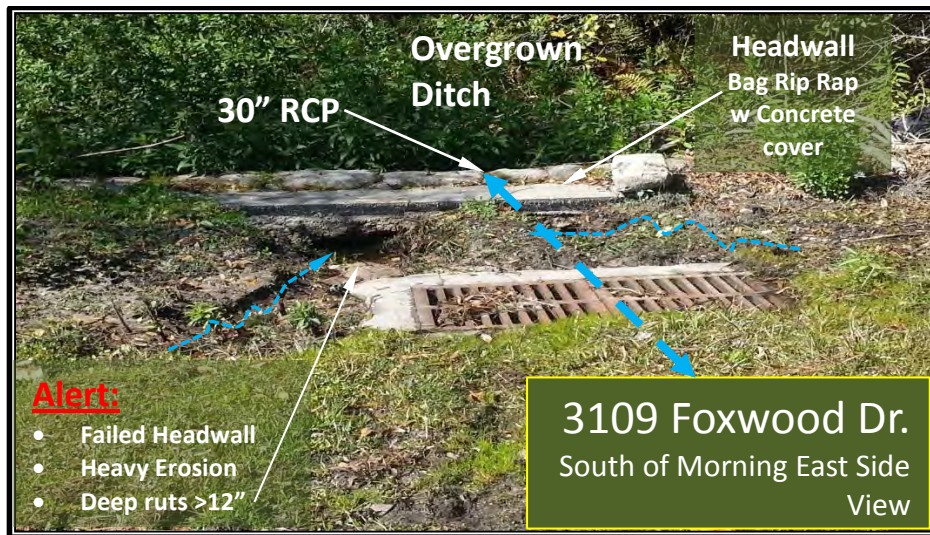
Items No	Maintenance Item	Unit of Measure	Units	Cost per Unit	Sub Total
1	Mobilization of Crew and equipment	LS	1	\$1,642.50	\$1,642.50
2	Sediment Barrier aka Silt fence	LF	50	\$1.47	\$73.50
4	Clean & reshape ditch, spread <15ft w	SY	15	\$15.07	\$226.08
8	Hydro-vacuum of RCP 30" Ø	LF	50	\$6.42	\$321.00
13	Excavation of sediment in swale	CY	5	\$19.87	\$99.37
14	Clearing of Vegetation swale or ditch ,15LF w	SY	10	\$8.04	\$80.39
39	Clean, Root Cutting & CC TV 54" Ø	LF	50	\$27.00	\$1,350.00
42	Performance Sod	SY	15	\$4.14	\$62.08
43	Seed & Mulch	SY	35	\$1.04	\$36.35
				<b>TOTAL</b>	<b>\$3,891.26</b>





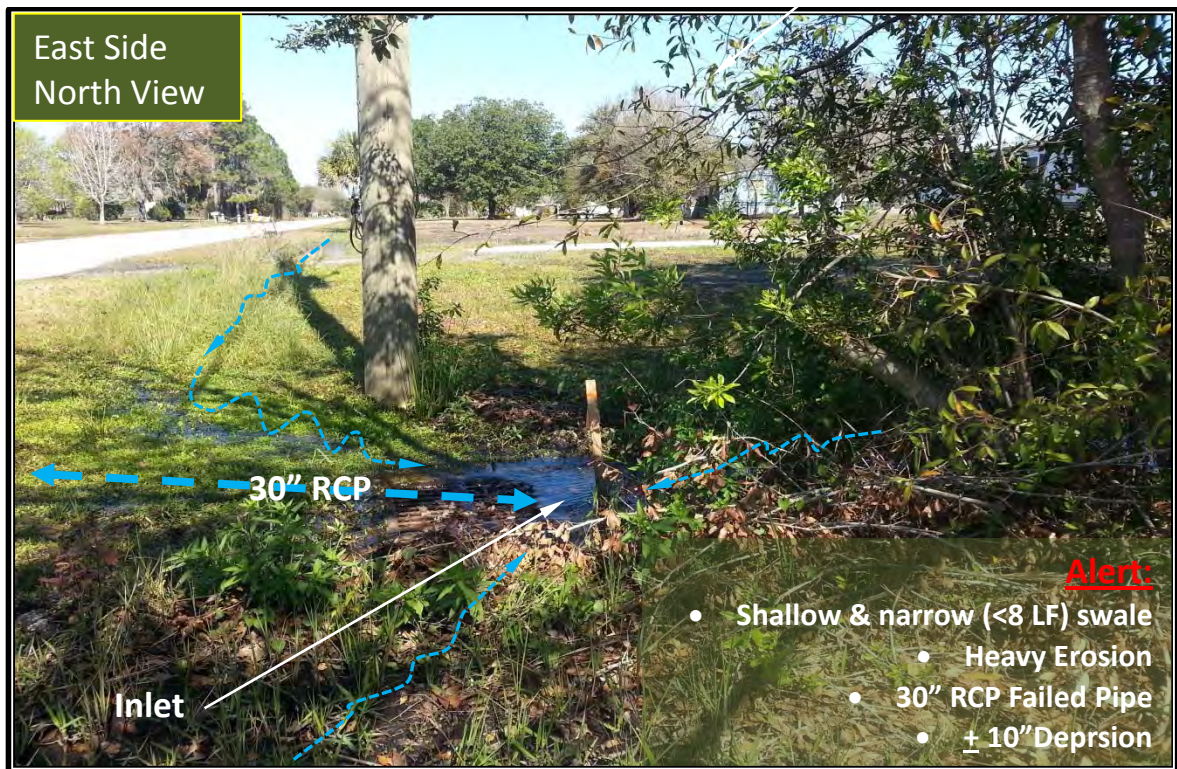
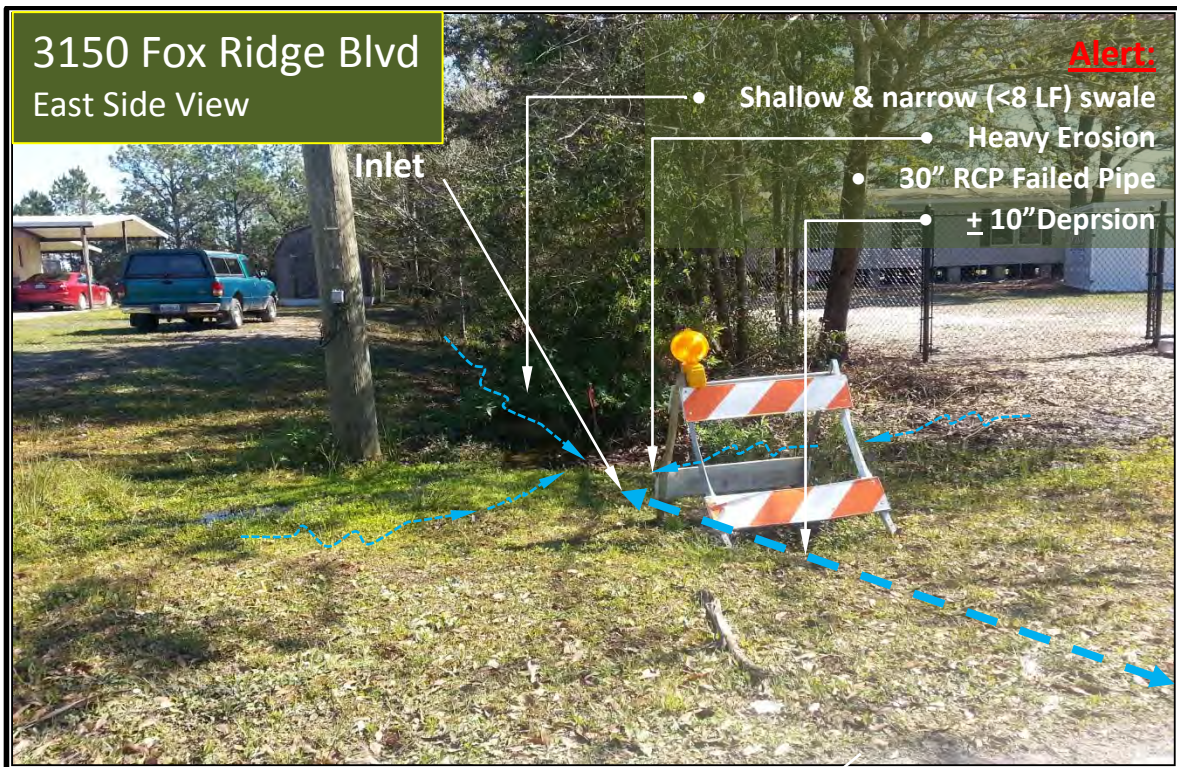
Items No	Maintenance Item	Unit of Measure	Units	Cost per Unit	Sub Total
1	Mobilization of Crew and equipment	LS	1	\$1,642.50	\$1,642.50
2	Sediment Barrier aka Silt fence	LF	18960	\$1.47	\$27,871.20
13	Excavation of sediment in swale	CY	6260.056	\$19.87	\$124,417.98
14	Clearing of Vegetation swale or ditch ,15LF w	SY	19524.74	\$8.04	\$156,949.60
35	Performance Sod	SY	31360.98	\$4.14	\$129,787.41
36	Seed & Mulch	SY	31360.98	\$1.04	\$32,568.38
37	Disposal of old structure materials and debris	LS	1	\$1,355.00	\$1,355.00
				<b>TOTAL</b>	<b>\$474,592.07</b>



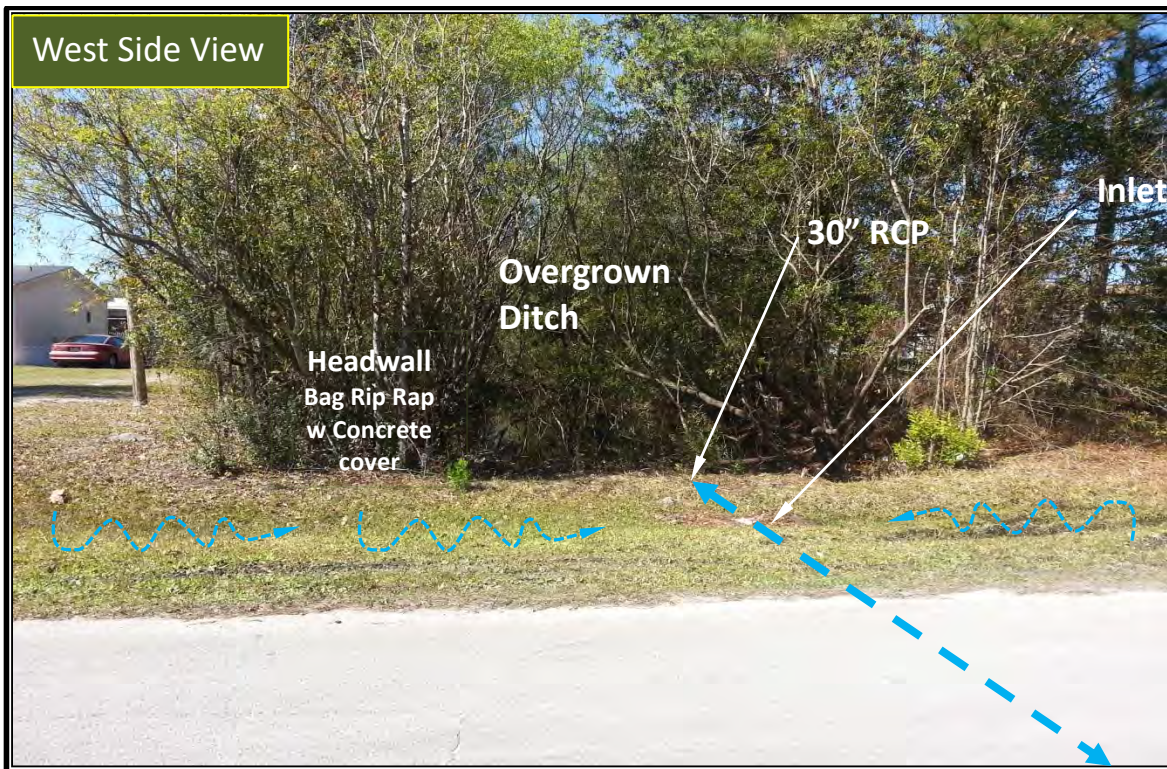


Items No	Maintenance Item	Unit of Measure	Units	Cost per Unit	Sub Total
1	Mobilization of Crew and equipment	LS	1	\$1,642.50	\$1,642.50
2	Sediment Barrier aka Silt fence	LF	75	\$1.47	\$110.25
3	Floating Turbidity Barrier	LF	50	\$9.21	\$460.50
4	Clean & reshape ditch, spread <15ft w	SY	35	\$15.07	\$527.52
8	Hydro-vacuum of RCP 30" Ø	LF	50	\$6.42	\$321.00
13	Excavation of sediment in swale	CY	10	\$19.87	\$198.75
14	Clearing of Vegetation swale or ditch ,15LF w	SY	20	\$8.04	\$160.77
15	Weeding and removal (hand) of debris from inlet throat	LS	1	\$34.95	\$34.95
16	Import Fill material	CY	5	\$104.85	\$524.25
17	Backfill and grading	LS	1	\$100.19	\$100.19
21	Class I End wall, 30" Ø	EA	1	\$2,161.12	\$2,161.12
28	Pipe Liner 30" Ø	LF	50	\$137.00	\$6,850.00
33	Concrete Ditch Pavement, Non reinforced, 4"	SY	5	\$64.50	\$322.48
35	Performance Sod	SY	25	\$4.14	\$103.46
36	Seed & Mulch	SY	25	\$1.04	\$25.96
				<b>TOTAL</b>	<b>\$13,543.70</b>



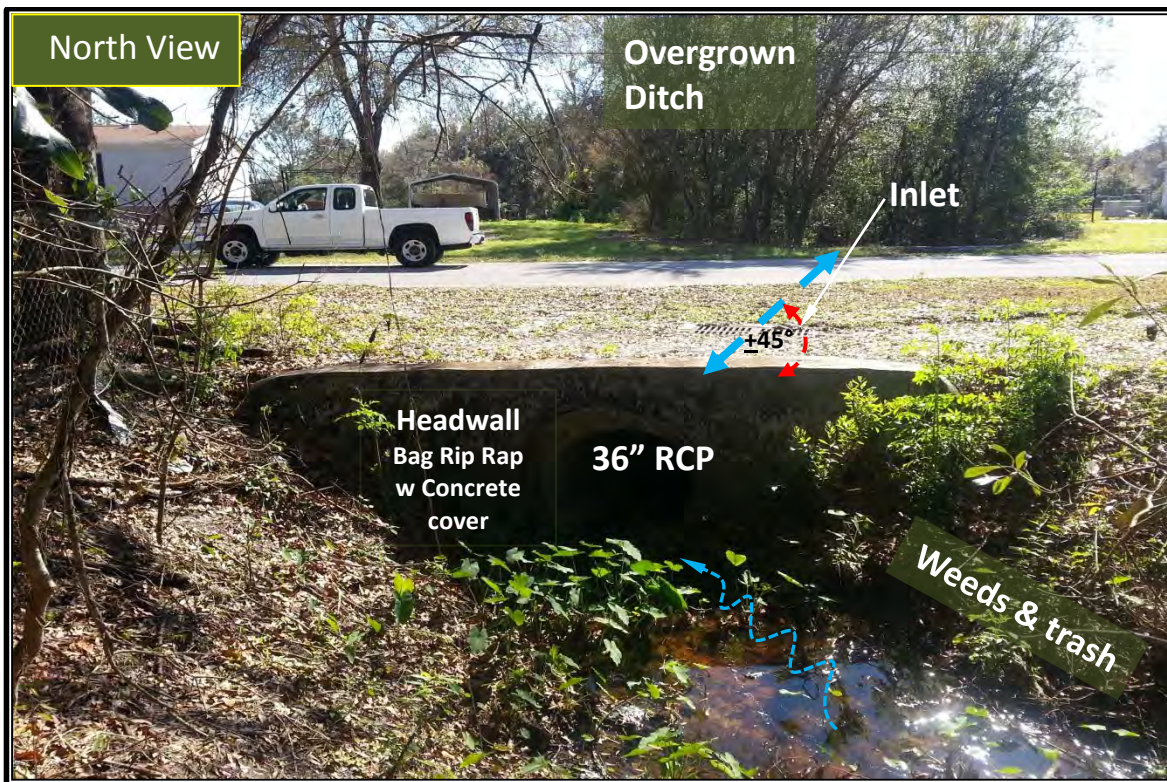
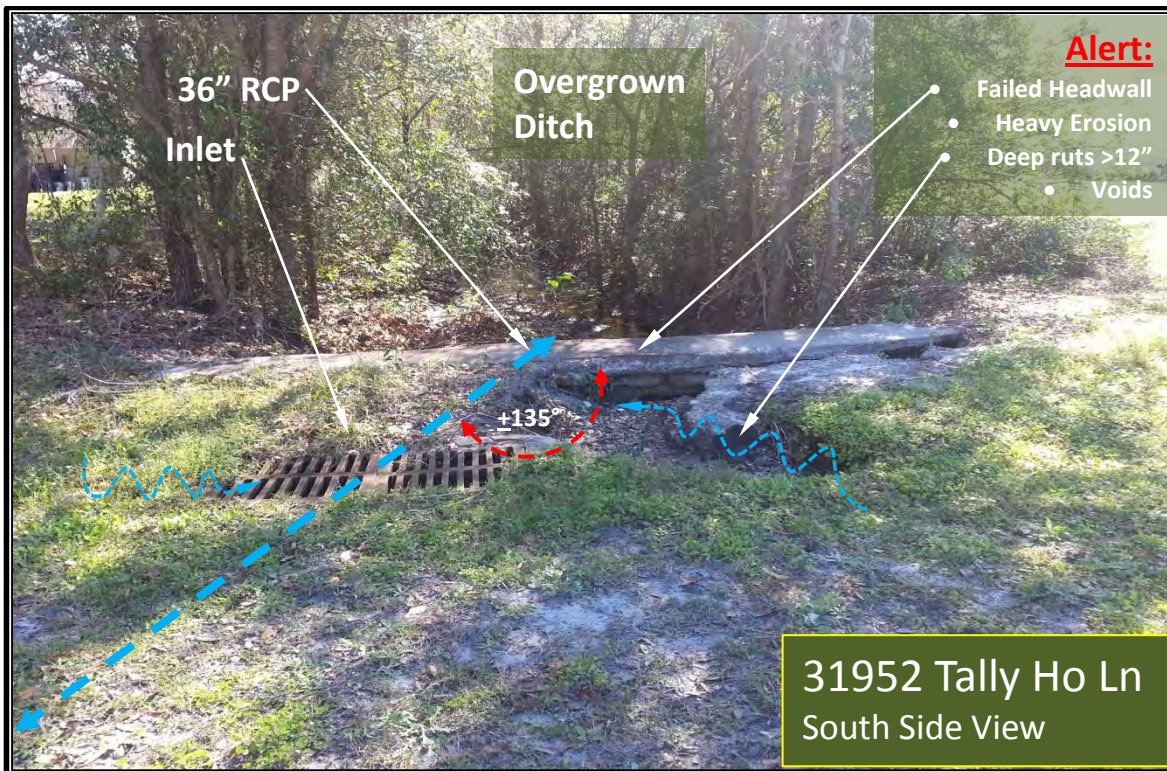






Items No	Maintenance Item	Unit of Measure	Units	Cost per Unit	Sub Total
1	Mobilization of Crew and equipment	LS	1	\$1,642.50	\$1,642.50
2	Sediment Barrier aka Silt fence	LF	80	\$1.47	\$117.60
4	Clean & reshape ditch, spread <15ft w	SY	25	\$15.07	\$376.80
8	Hydro-vacuum of RCP 30" Ø	LF	50	\$6.42	\$321.00
13	Excavation of sediment in swale	CY	20	\$19.87	\$397.50
14	Clearing of Vegetation swale or ditch ,15LF w	SY	20	\$8.04	\$160.77
15	Weeding and removal (hand) of debris from inlet throat	LS	1	\$34.95	\$34.95
28	Pipe Liner 30" Ø	LF	50	\$137.00	\$6,850.00
35	Performance Sod	SY	25	\$4.14	\$103.46
36	Seed & Mulch	SY	25	\$1.04	\$25.96
				<b>TOTAL</b>	<b>\$10,030.54</b>

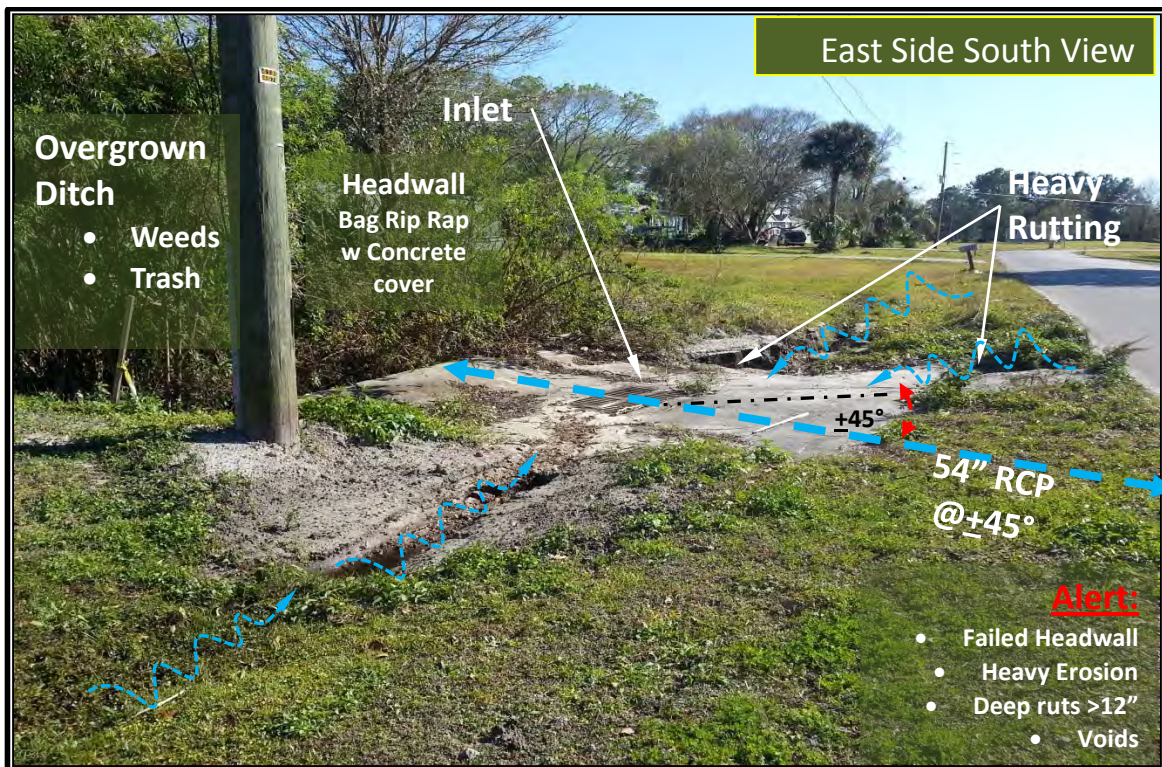
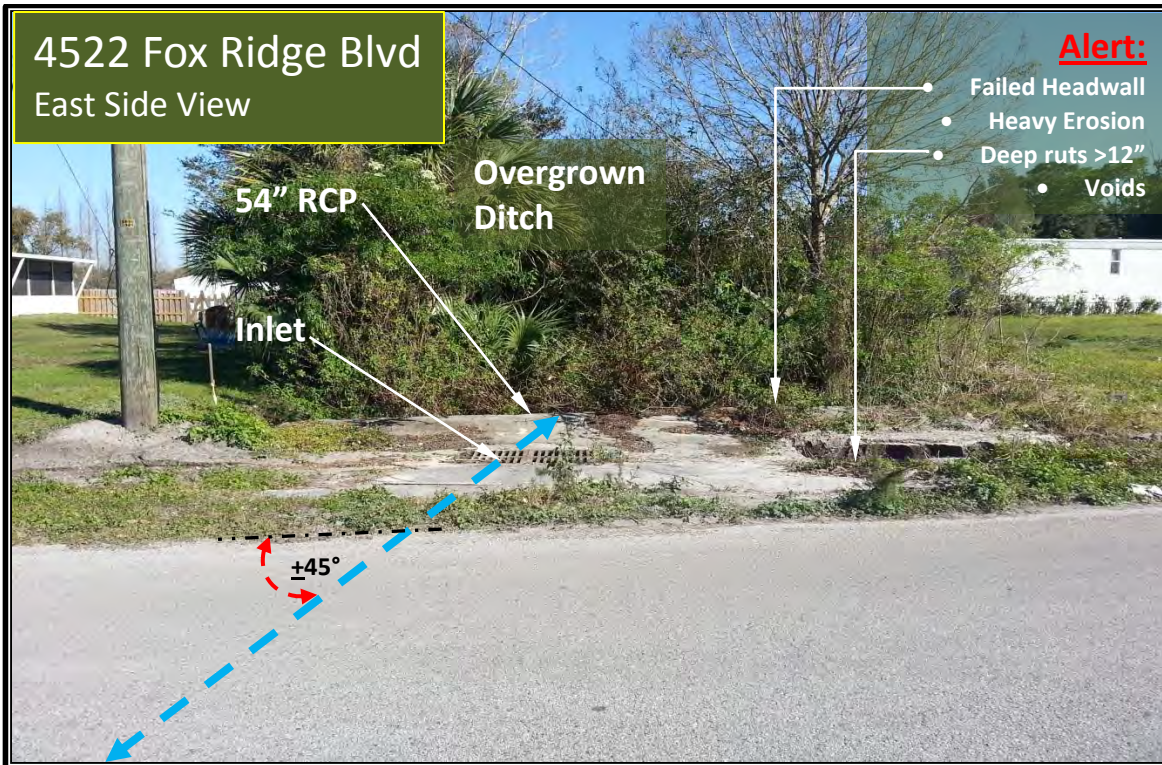




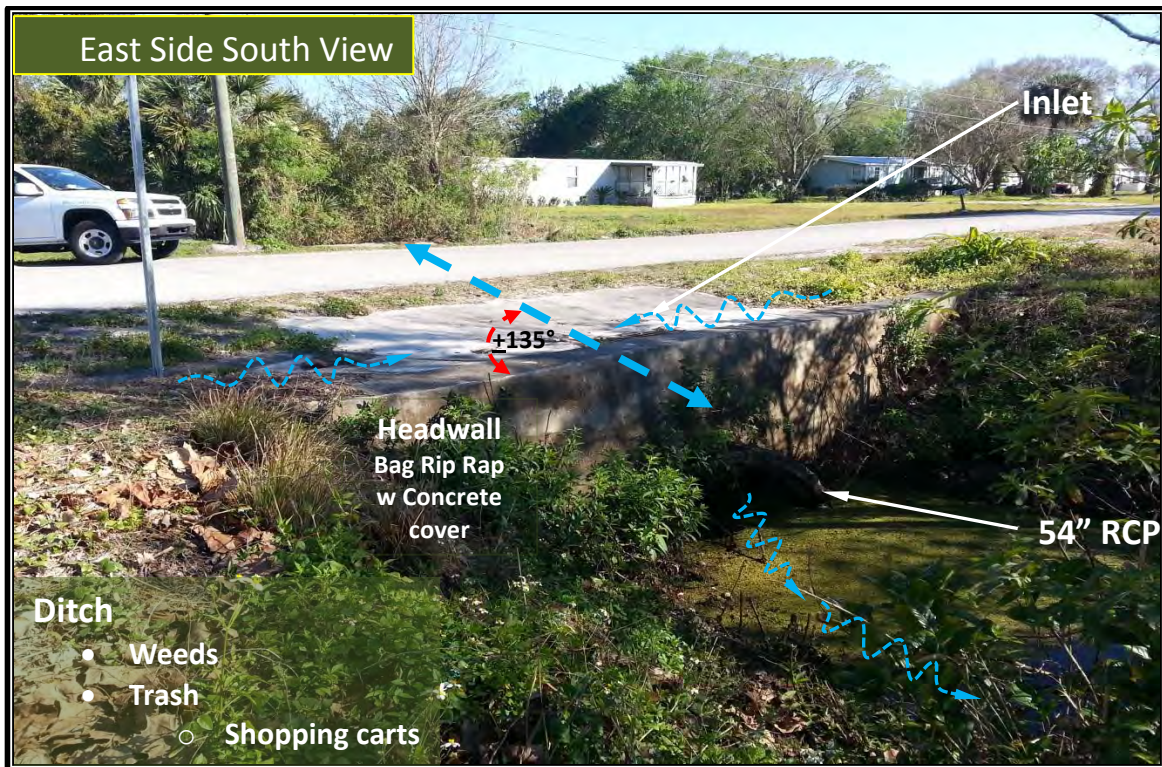


Items No	Maintenance Item	Unit of Measure	Units	Cost per Unit	Sub Total
1	Mobilization of Crew and equipment	LS	1	\$1,642.50	\$1,642.50
2	Sediment Barrier aka Silt fence	LF	50	\$1.47	\$73.50
3	Floating Turbidity Barrier	LF	20	\$9.21	\$184.20
4	Clean & reshape ditch, spread <15ft w	SY	25	\$15.07	\$376.80
5	Removal & disposal of damage outfall materials	LS	1	\$268.92	\$268.92
9	Hydro-vacuum of RCP 36" Ø	LF	75	\$6.42	\$481.50
13	Excavation of sediment in swale	CY	10	\$19.87	\$198.75
14	Clearing of Vegetation swale or ditch ,15LF w	SY	20	\$8.04	\$160.77
16	Import Fill material	CY	5	\$104.85	\$524.25
17	Backfill and grading	LS	1	\$100.19	\$100.19
22	Class I End wall, 36" Ø	EA	1	\$3,003.03	\$3,003.03
29	Pipe Liner 36" Ø	LF	75	\$209.00	\$15,675.00
35	Performance Sod	SY	25	\$4.14	\$103.46
36	Seed & Mulch	SY	25	\$1.04	\$25.96
37	Disposal of old structure materials and debris	LS	1	\$1,355.00	\$1,355.00
				<b>TOTAL</b>	<b>\$24,173.83</b>









Items No	Maintenance Item	Unit of Measure	Units	Cost per Unit	Sub Total
1	Mobilization of Crew and equipment	LS	1	\$1,642.50	\$1,642.50
2	Sediment Barrier aka Silt fence	LF	80	\$1.47	\$117.60
3	Floating Turbidity Barrier	LF	50	\$9.21	\$460.50
4	Clean & reshape ditch, spread <15ft w	SY	35	\$15.07	\$527.52
5	Removal & disposal of damage outfall materials	LS	1	\$268.92	\$268.92
12	Hydro-vacuum of RCP 54" Ø	LF	75	\$17.53	\$1,314.75
13	Excavation of sediment in swale	CY	20	\$19.87	\$397.50
14	Clearing of Vegetation swale or ditch , 15LF w	SY	20	\$8.04	\$160.77
16	Import Fill material	CY	5	\$104.85	\$524.25
17	Backfill and grading	LS	1	\$100.19	\$100.19
25	Class I End wall, 54" Ø	EA	1	\$7,762.79	\$7,762.79
32	Pipe Liner 54" Ø	LF	75	\$600.52	\$45,039.00
33	Concrete Ditch Pavement, Non reinforced, 4"	SY	7	\$64.50	\$451.47
35	Performance Sod	SY	25	\$4.14	\$103.46
36	Seed & Mulch	SY	35	\$1.04	\$36.35
37	Disposal of old structure materials and debris	LS	1	\$1,355.00	\$1,355.00
				<b>TOTAL</b>	<b>\$60,262.57</b>