

PRINCE GEORGE COUNTY COMPREHENSIVE PLAN 2045



JOINT KICKOFF MEETING
MARCH 21, 2024



BERKLEY
GROUP



MEETING OBJECTIVES

-  What is a Comprehensive Plan?
-  What is the Update Process?
-  How Is the Public Involved?
-  What Data Has Been Gathered So Far?
-  What is Your Perspective?



**WHAT IS A
COMPREHENSIVE PLAN?**



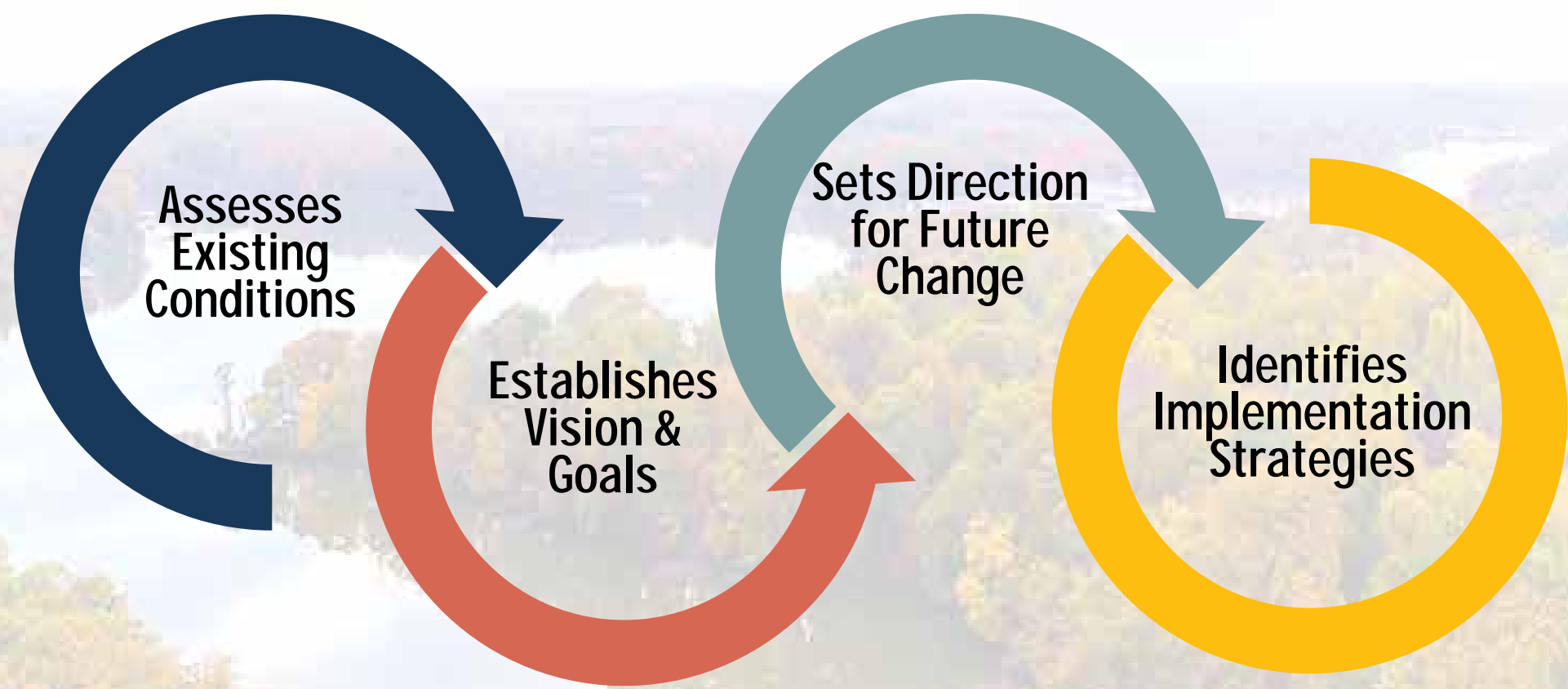
WHAT IS A COMPREHENSIVE PLAN?*

- q **A long-range planning document and decision-making guide**
- q **A community-guided vision for the future**
- q **A showcase of assets and areas for improvement**
- q **The guiding framework for the community's planning tools: Zoning Ordinance, Subdivision Ordinance, Capital Improvements Program, and other Plans & Studies**
- q **A legally required document by Virginia State Code Section § 15.2-2223**

****See BG Guide to Comprehensive Planning***



WHAT DOES A COMPREHENSIVE PLAN DO?





WHAT DOES A COMPREHENSIVE PLAN ADDRESS?



Transportation

Land Use

Historic Resources, Art &
Culture

Parks & Recreation

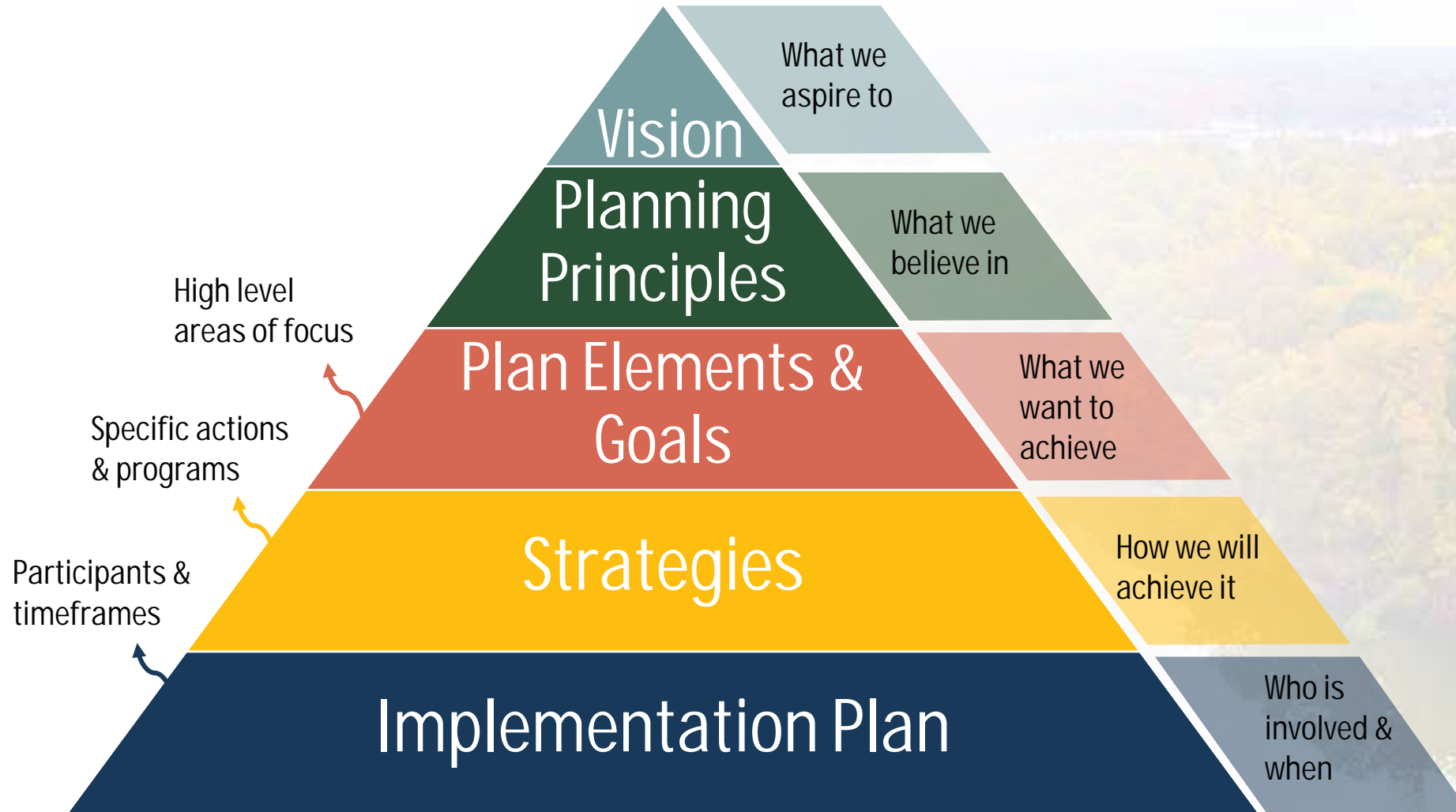
Natural Resources

Economic Development

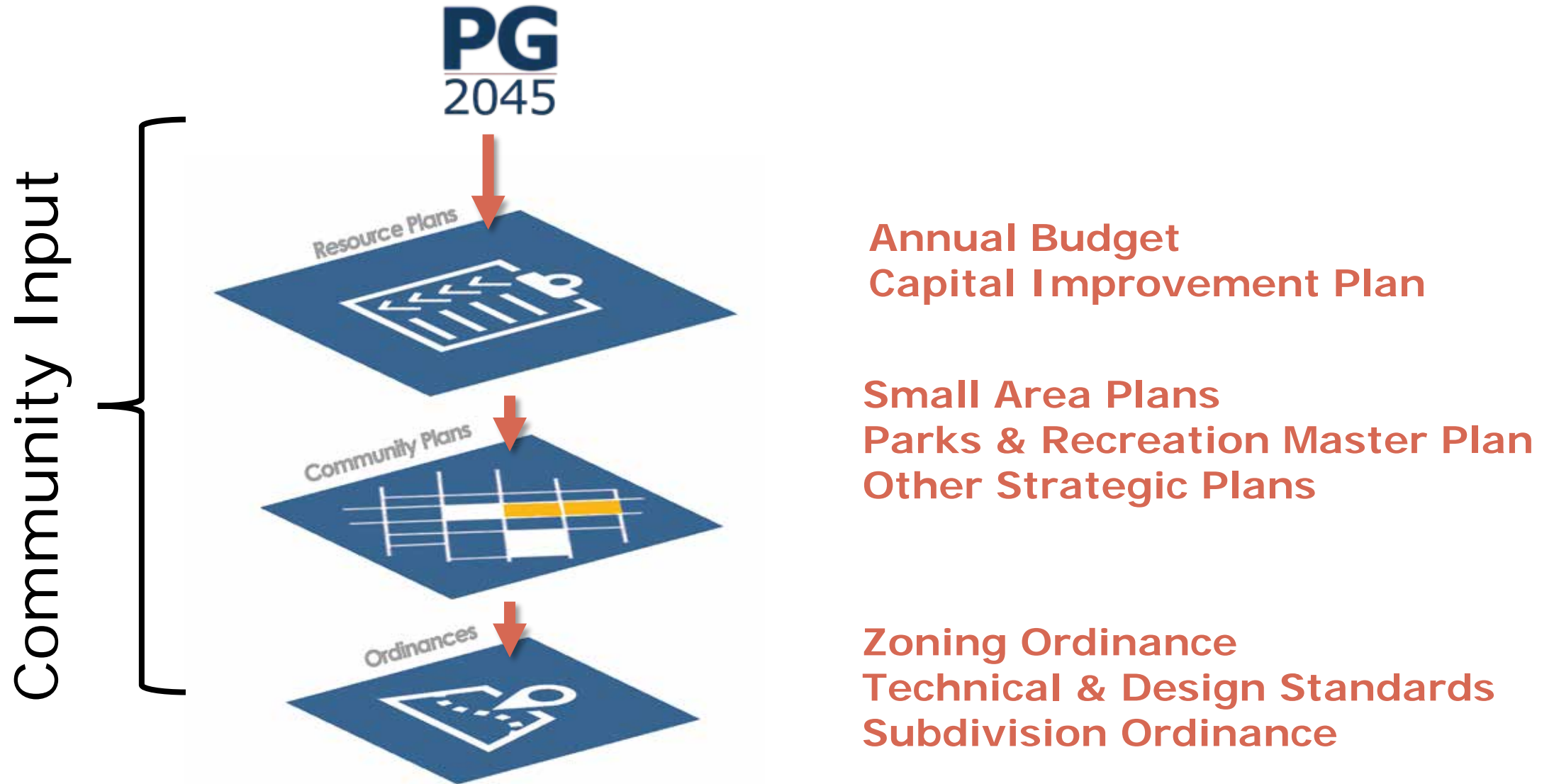
Housing & Neighborhoods

Community Facilities &
Infrastructure

WHAT ARE THE PARTS OF A PLAN?



WHAT IS THE RELATIONSHIP TO OTHER PLANS & ORDINANCES?





WHO USES THE PLAN?



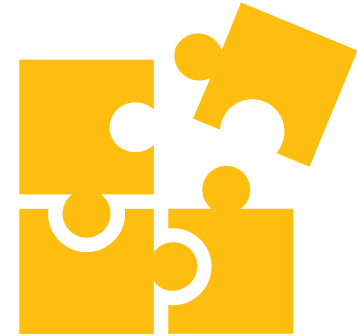
**Citizens,
Developers
& Business
Owners**



**County
Staff &
Planning
Commission**



**Board of
Supervisors &
Other Public
Bodies**



**Regional
Partners**



WHY UPDATE A PLAN?

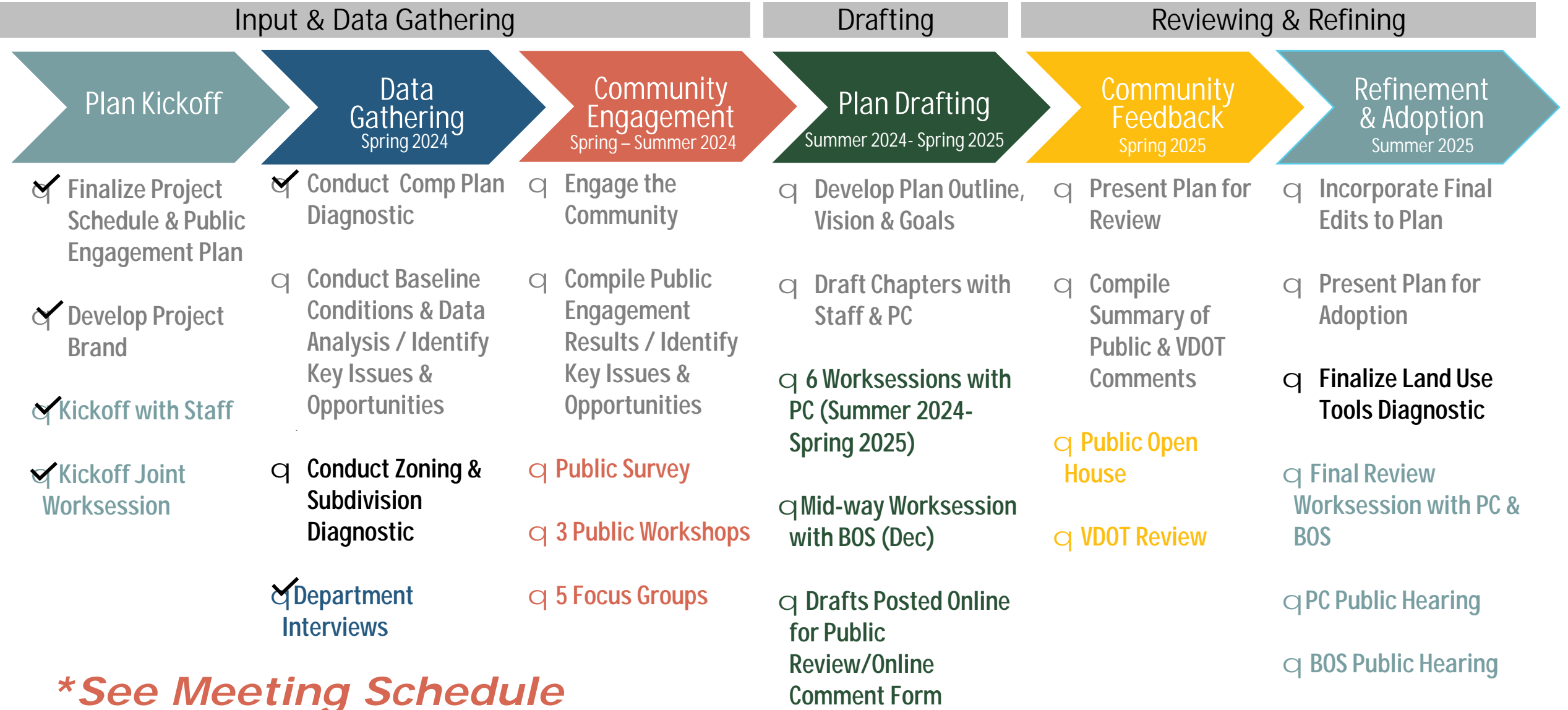
- q **Local priorities & vision change with time**
- q **The natural & built environment change with time**
- q **Strategies to achieve the plan's vision & goals must be updated & adjusted**
- q **Five-year review legally required by Virginia State Code §15.2-2223**

WHAT IS THE UPDATE PROCESS?





WHAT IS THE UPDATE PROCESS?*





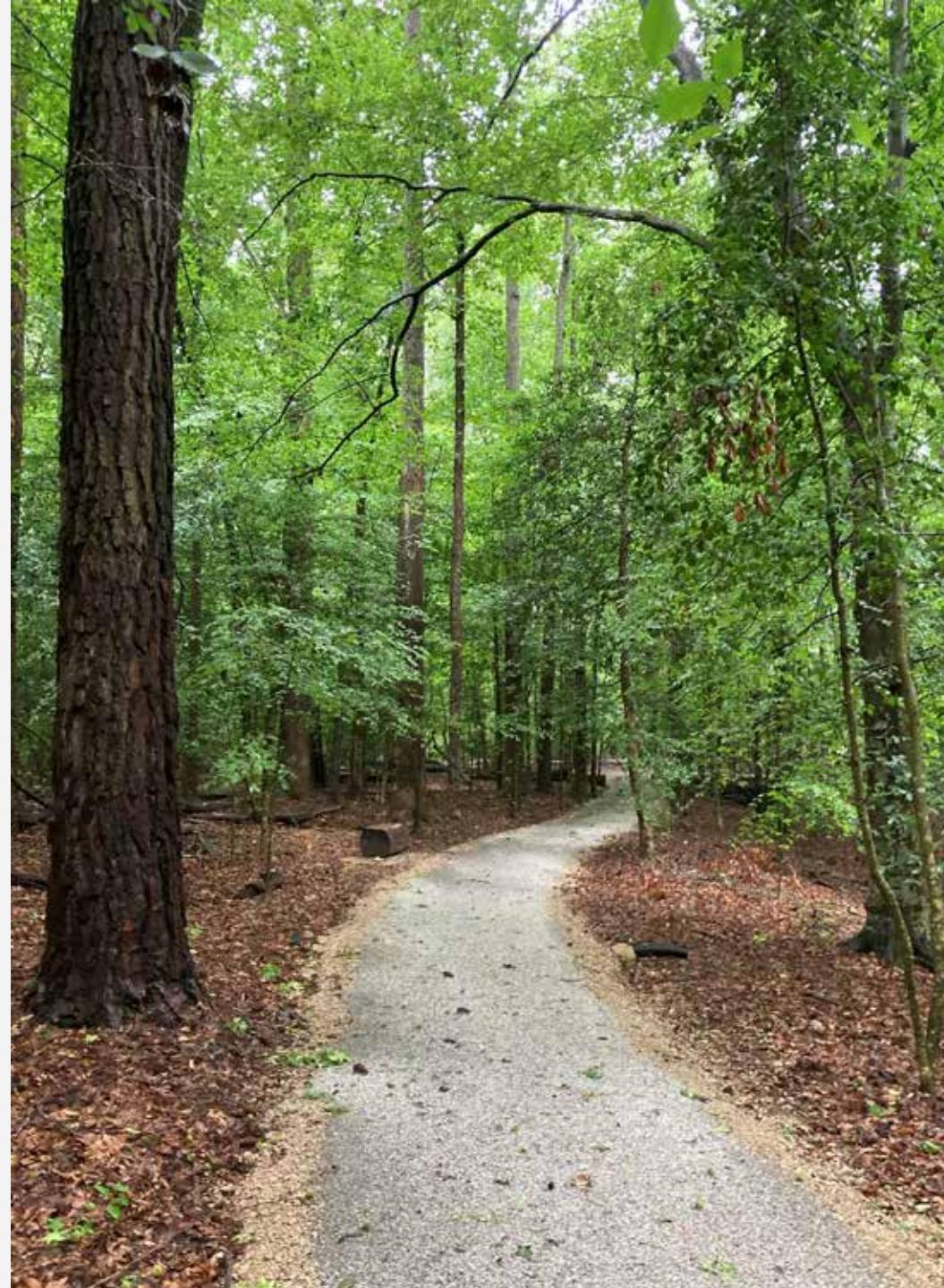
WHO IS INVOLVED?





WHAT IS YOUR ROLE?

- ✓ Encourage Community Participation
- ✓ Provide Input & Ideas
- ✓ Review Drafts & Provide Feedback
- ✓ Attend Worksessions
- ✓ Hold Public Hearing





HOW IS THE PUBLIC INVOLVED?



Project Website

Educate & Inform



Flyers & Guides

The Project Team will produce and distribute (both through print and online platforms) flyers and educational guides, to advertise and educate the community about the Comprehensive Plan and opportunities to engage in the Plan update process.

Listen & Consult



Public Survey

The public survey is a detailed data gathering tool that asks the general public to answer a series of questions about planning topics pertinent to their community. The survey will be made available online and will be open for approximately 60 days.



Public Workshops

Public workshops are an opportunity for the community to come together and work in small groups to identify priority needs for their community. Three public workshops are currently scheduled and will be held on weekday evenings during May.



Focus Groups

Focus groups bring small groups of community experts together to discuss planning topics in detail. Five focus groups are scheduled and will address topics such as education & workforce, housing & neighborhoods, and economic development.



Draft Review

Throughout the drafting and plan development process, drafts of chapters and Plan content will be available for public review. An online comment form will be used to collect public comments during the drafting phase of the project.

Receive Feedback



Public Open House

The Public Open House is an opportunity for the public to gather and review the draft Comprehensive Plan, provide feedback, and ask questions. The Open House is the Project Team's opportunity to make sure we heard the community accurately during the data gathering phase.



Public Hearing

After refining the Plan based on public feedback, the Plan will be presented through the Public Hearing process. At these Public Hearings, members of the public can offer additional comment and edits on the draft Comprehensive Plan.

GOAL

ACTION

Input & Data
Gathering



Drafting



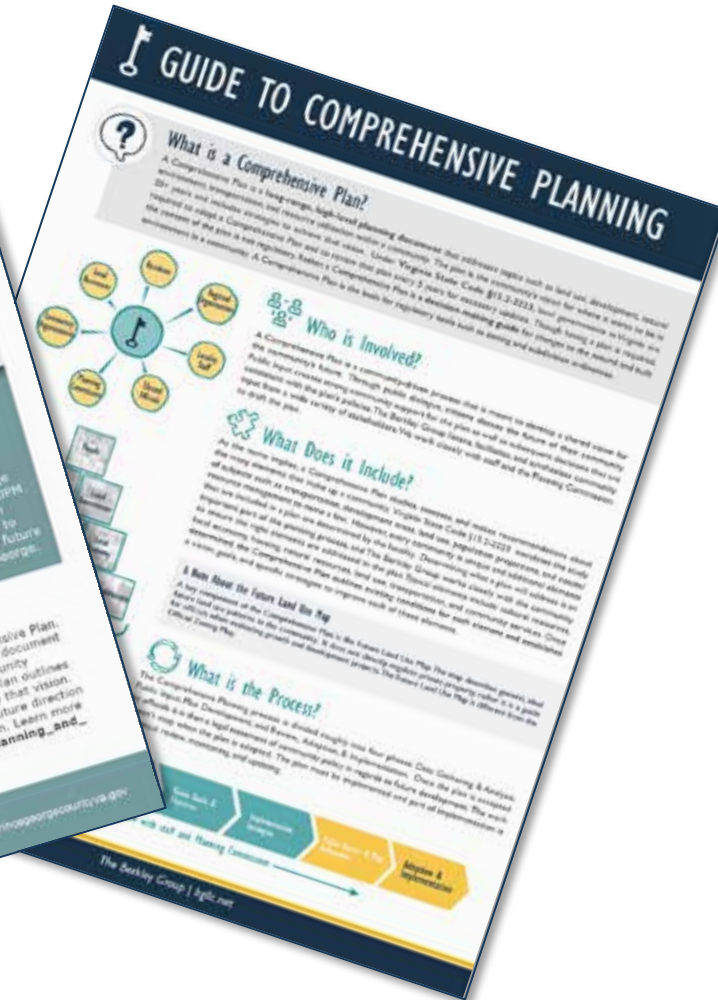
Reviewing &
Refining



PROJECT PHASE

HOW ARE WE GETTING THE WORD OUT?

PG
2045



- ✓ Print Flyers & Guides
- ✓ County Website & Social Media
- ✓ Press Releases & Newspaper Ads
- ✓ Word of Mouth

princegeorgecountyva.gov/planning_and_zoning/2045_compplan



PUBLIC INPUT SURVEY

Prince George County Comprehensive Plan Community Survey

Prince George

Comprehensive Plan

2045

Introduction

This survey is an opportunity for residents and neighbors of Prince George County to share thoughts and opinions on the future growth and development of the County. Your feedback will be used by the County's staff, Planning Commission, and Board of Supervisors as we work to update the County's Comprehensive Plan.

What is a Comprehensive Plan?

The Comprehensive Plan is Prince George County's most important document regarding growth and development. It establishes government guidelines for public and private activities as they relate to land use and community facilities. The Plan is the basis for land development regulations; capital improvements for schools, parks, and other public uses; transportation investments; and environmental and historic resource protection. All Virginia localities are required to adopt a Comprehensive Plan and review the plan for necessary updates every five years.

Questions?

Contact Tim Graves, Planner, at:
(804) 722-8678
-or-
tgraves@princegeorgecountyva.gov

1. What do you value the most about Prince George County?

(Choose up to three)

☐ Higher Education Opportunities

☐ Public Education System

☐ Housing Opportunities

☐ Rural Character

☐ Cost of Living

☐ Natural Environment

☐ Employment

☐ Recreation

☐ Sense of

✓ Available Online

✓ Open for 60 Days



<https://arcg.is/rSXDS1>

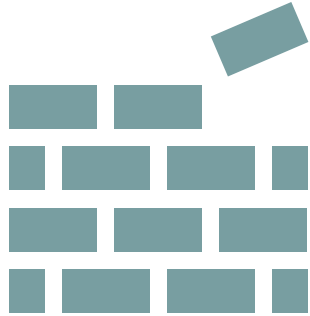




FOCUS GROUPS



Housing,
Neighborhood,
and Historic
Preservation



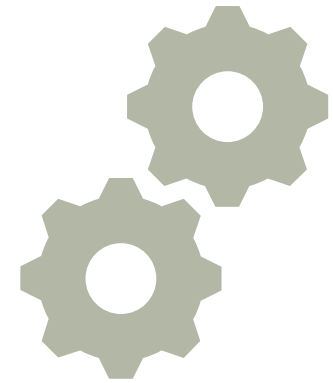
Land Use and
Development
& Mobility and
Transportation



Environmental
Stewardship &
Natural
Resources



Business and
Economic
Development



Community
Facilities &
Parks and
Recreation



3 Workshops: May 8, May 15, May 22 @6pm Prince George Library



A scenic autumn landscape featuring a wooden fence in the foreground, a path leading through a field of green and yellow grass, and a dense line of trees in the background. The sun is shining from the top left, creating a bright glow and long shadows. The text "WHAT DATA HAS BEEN GATHERED SO FAR?" is overlaid in large, white, bold, sans-serif capital letters across the center of the image.

**WHAT DATA HAS BEEN
GATHERED SO FAR?**



COMPREHENSIVE PLAN DIAGNOSTIC*

Assessed the 2018 Comprehensive Plan for Compliance with Virginia State Code: Title 15.2, Chapter 22, Article 3

Assessed the 2018 Comprehensive Plan for Best Practices, Clarity, and Readability

****See Comprehensive Plan Diagnostic***



CODE OF VIRGINIA KEY FINDINGS

1

Robust public
engagement process

2

More thorough
analysis of
transportation
conditions and
priorities

3

Discussion of
proceedings for Plan
adoption and
amendments

4

Discussion of modern
land use
considerations such
as broadband
infrastructure,
resilience, and transit-
oriented development

CHESAPEAKE BAY PROTECTION ACT KEY FINDINGS

1

Update mapping of RPA, RMA, wetlands, waterways shoreline and streambank erosion potential pollution sources, and water access

2

Document constraints to development

3

Better explain the relationship between future land use and water quality

4

Updated policy statements, projects, and implementation steps



BEST PRACTICES KEY FINDINGS

1

Include chapter on local economy, post-disaster economic recovery, and workforce development

2

Weave public input into each chapter to clearly demonstrate connection between participation and recommendations and strategies

3

Include BPs for pollution reduction, mixed-use, food and healthcare systems, public safety, and recreation

4

Update the implementation matrix for current goals and conditions, timeline, and responsible party



DEPARTMENT INTERVIEWS & COUNTY TOUR

County Tour & Interviews Conducted with County Departments Heads to identify planning needs, issues, opportunities, and resources.

**See Summary*

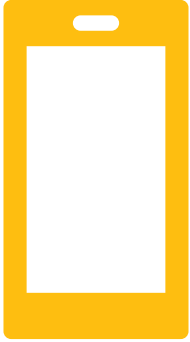
WHAT WE HEARD KEY THEMES

- » Lack of Water and Sewer Capacity is an obstacle to development.
- » Demand for housing on five acre lots is causing a significant amount of development in areas that are intended to remain rural.
- » Encouraging the development of a “downtown” or other village centers could be an opportunity to allow for growth and to create a sense of place and identity.
- » Water and Sewer capacity needs to be brought to business and industrial parks to allow them to succeed.
- » What does “rural character” mean for the residents of Prince George County?



**WHAT IS YOUR
PERSPECTIVE?**

DISCUSSION



For this portion of the presentation, you will need your phone or other electronic device.



Website

pollev.com/berkleygroup502

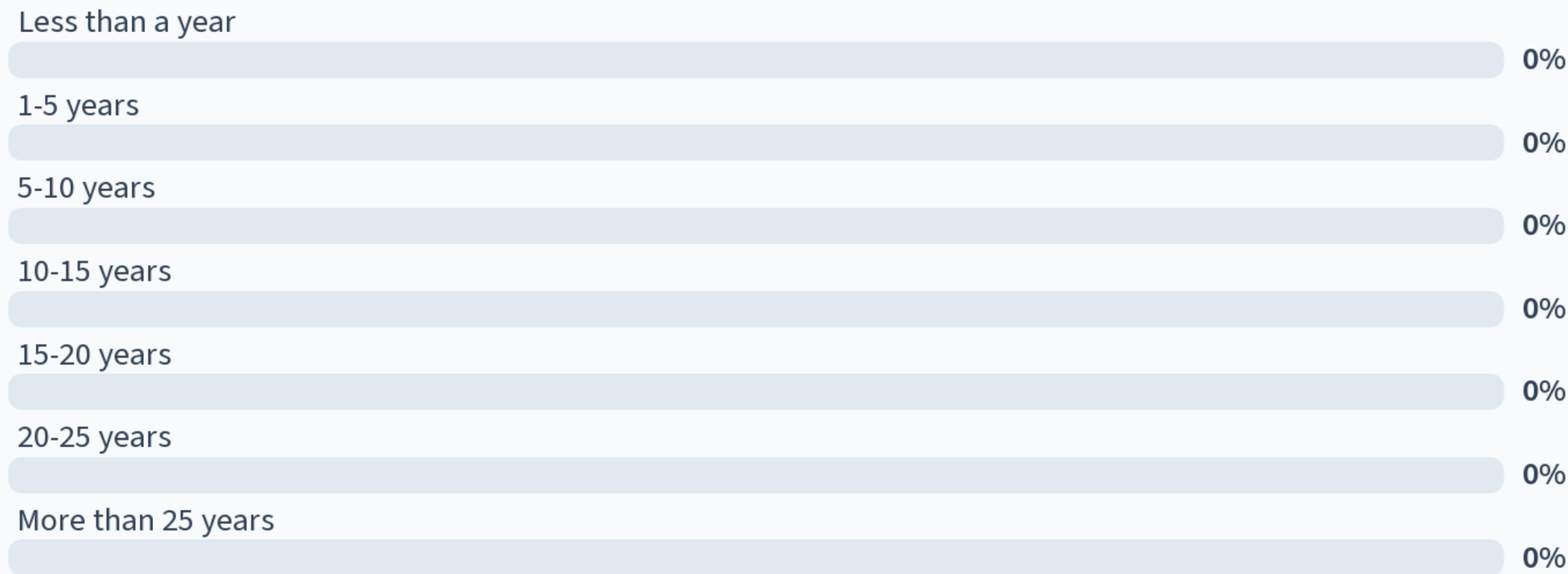
Text

#37607

berkleygroup502



How long have you lived in Prince George County?



What does the County do well?

Nobody has responded yet.

Hang tight! Responses are coming in.



What can the County improve on?

Nobody has responded yet.

Hang tight! Responses are coming in.



What specific Goals or Projects would you like to see the County focus on?

Nobody has responded yet.

Hang tight! Responses are coming in.

PRINCE GEORGE COUNTY COMPREHENSIVE PLAN 2045

THANK YOU!

