



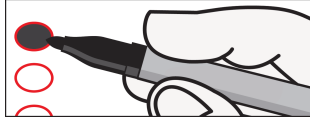
Official Coordinated Election Ballot
Prowers County, Colorado
Tuesday, November 2, 2021

Jana Coen
Clerk and Recorder

Ballot Type: PCHD-OUT

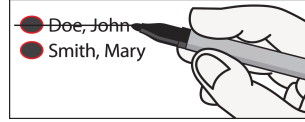
Instructions:

Voting for a named candidate:



To vote for a candidate, completely fill in the oval to the left of your choice using blue or black ink.

Making a correction:



If you make an error, draw a bold line through the oval and candidate name that you marked by mistake, and completely fill in the oval next to the correct choice.

WARNING: Any person who, by use of force or other means, unduly influences an eligible elector to vote in any particular manner or to refrain from voting, or who falsely makes, alters, forges, or counterfeits any mail ballot before or after it has been cast, or who destroys, defaces, mutilates, or tampers with a ballot is subject, upon conviction, to imprisonment, or to a fine, or both. Section 1-7.5-107(3)(b), C.R.S.

Table with 3 columns: Ballot Measures, Proposition 119 (STATUTORY), Proposition 120 (STATUTORY). Includes Amendment 78 (CONSTITUTIONAL) and District Measure Prowers County Hospital District Ballot Question 7A.

+

# SAMPLE

This side has been intentionally left blank.

# SAMPLE

