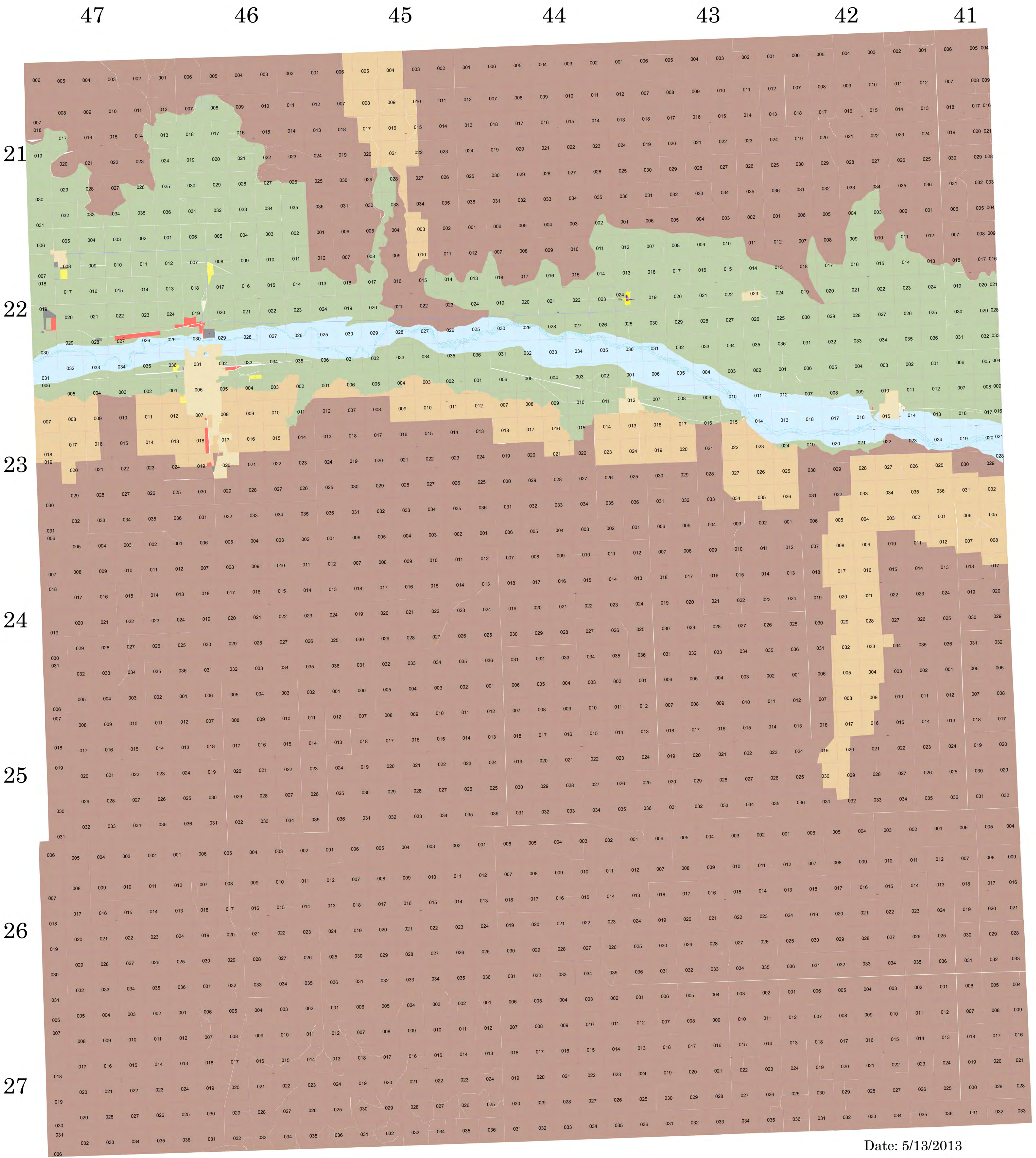



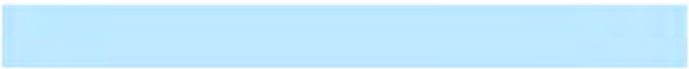






Prowers County Zoning Map



Date: 5/13/2013

Legend			
	CITIES		C-2 HIGHWAY COMMERCIAL
	A-1 IRRIGATED LAND		F-1 FLOODPLAIN
	A-2 NON-IRRIGATED LAND		I-1 INDUSTRIAL
	A-3 FRAGILE LAND		R-1 SINGLE FAMILY RESIDENTIAL
	C-1 LOCAL COMMERCIAL		R-2 MIXED RESIDENTIAL

This map is for general planning purposes only and is subject to updates and changes. Any user should check with Prowers County Prior to use to be sure that the data is correct. Because of the scale of this map, any user should not rely on it for the exact definition of any boundary or division line shown on said map. The map is based on information from numerous sources, the accuracy of which is not guaranteed by Prowers County. Prowers County is not responsible and shall not be held liable to the user for damages of any kind arising from the data or information on this map.

