

Rogue River Park

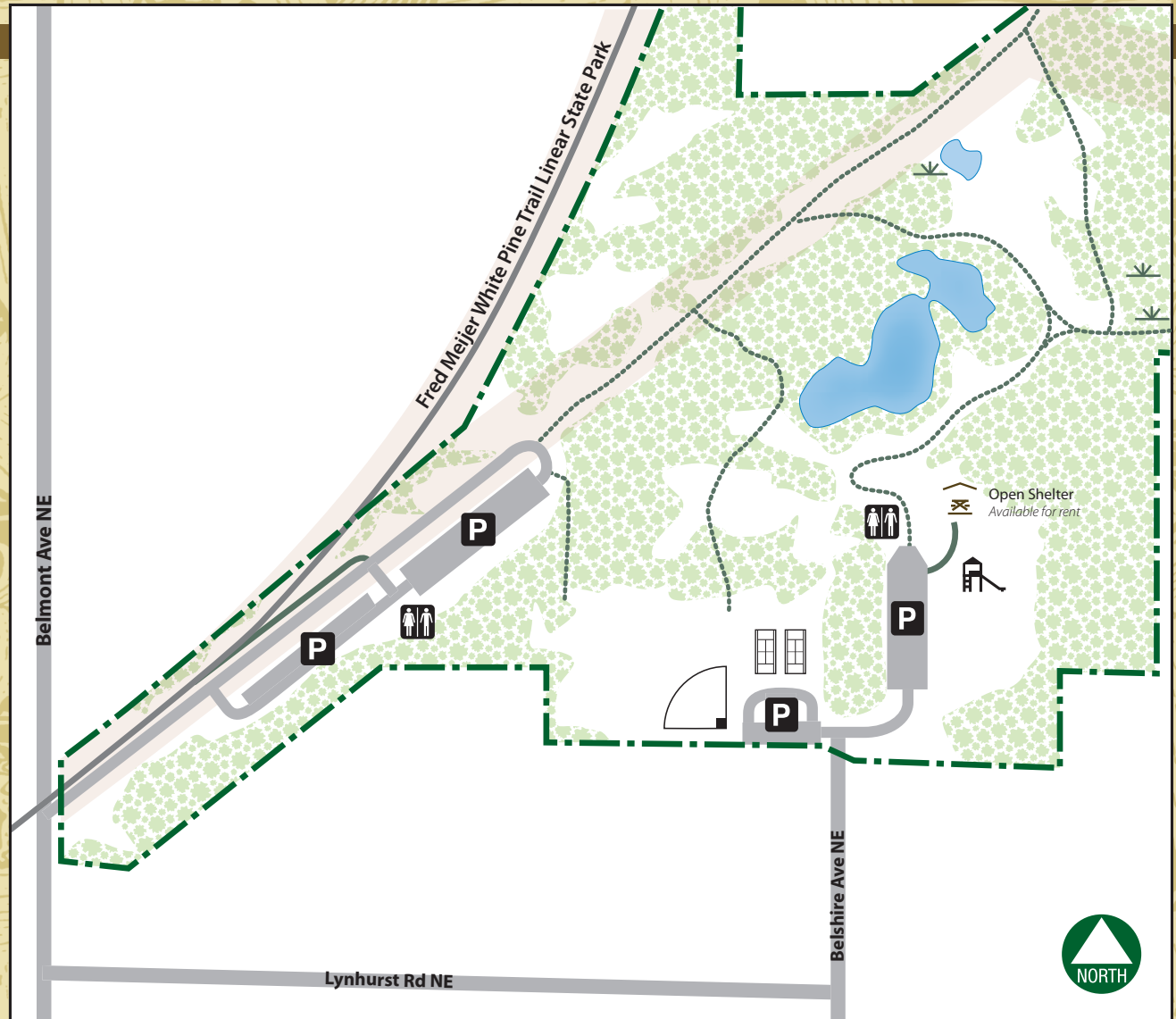


6300 Belshire Ave, Belmont MI 49306



MAP KEY







- | | |
|--|------------------------|
| Parking | Natural surface trail |
| Restrooms | Paved trail or pathway |
| Playground | Open Shelter |
| Wetland | Ball Diamond |
| Wooded Area | Tennis Court |
| Michigan DNR or Consumers Power property available to park users | |



For information or to reserve a shelter or picnic area, please call (616) 632-PARK (7275) or visit www.KentCountyParks.org



MAP KEY

-  Parking
-  Natural surface trail
-  Paved trail or pathway
-  Wetlands
-  Wooded area
-  Available to park users through special agreements with the Michigan Dept of Natural Resources and Consumers Energy



Rogue River Park

6300 Belshire Avenue
Belmont, MI 49306



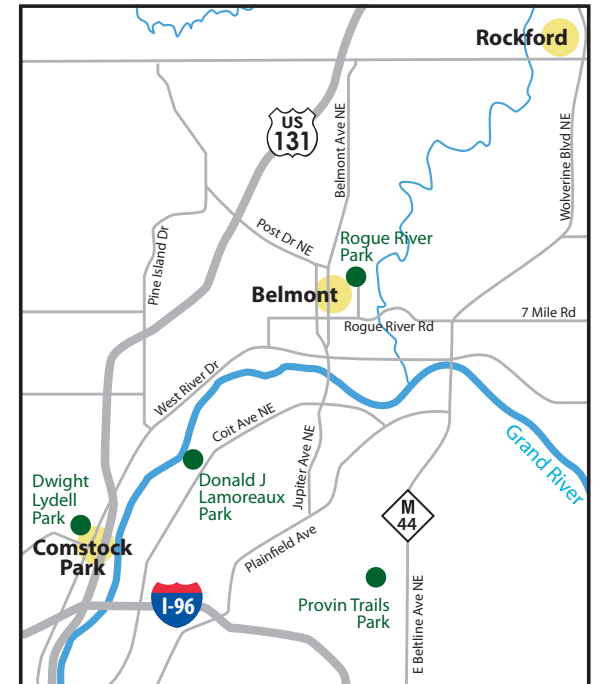
The area shown in the orange frame is expanded on the reverse side.



12-13

For more information:

Kent County Parks Department
1700 Butterworth Drive SW
Grand Rapids MI 49534-7065
(616) 632-PARK (7275)
www.KentCountyParks.org



Located on the east edge of Belmont, on Belmont Ave or north of Rogue River Dr on Belshire Ave.