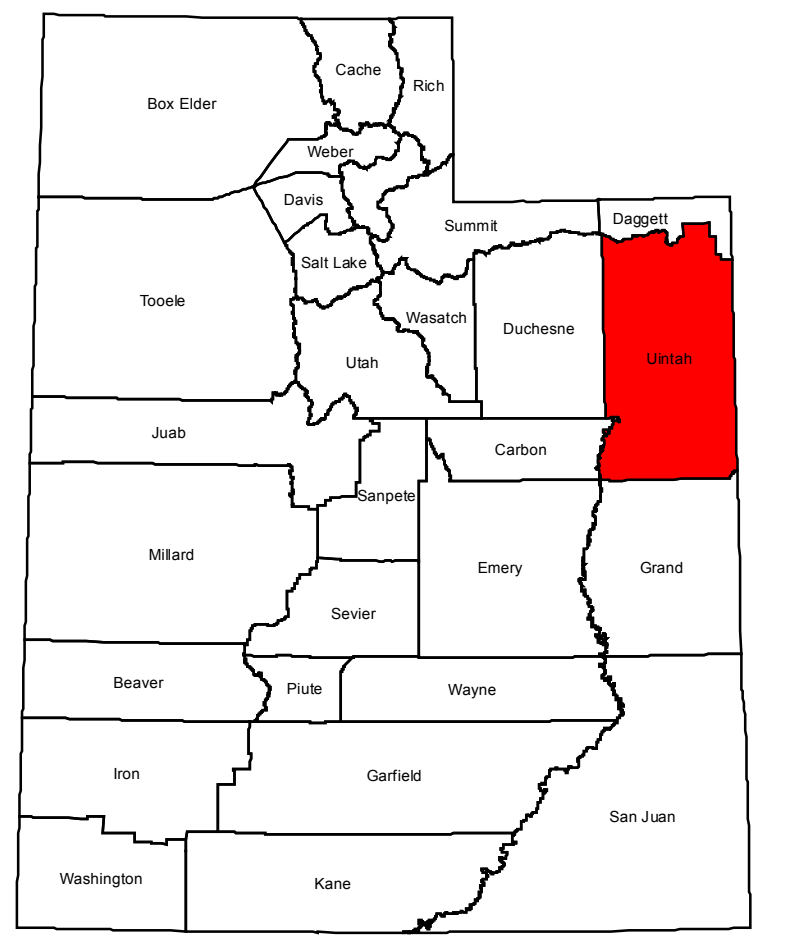


Uintah County Transportation System Map

2016

U I N T A H C O U N T Y



Entry 2016000519
BOOK 1462 PAGE 357 80.00
26-JAN-16 01:40
GEOGRAPHIC RECORDS
RECORDS, UTAH COUNTY, UTAH
COUNTY CLERK/AUDITOR
247 E. MAIN STREET, UT 84002
RIC BY: WANDA MERLEY DEPU

RANGE

6	5	4	3	2	1
7	8	9	10	11	12
18	17	16	15	14	13
19	20	21	22	23	24
30	29	28	27	26	25
31	32	33	34	35	36

TOWNSHIP

Legend

Roads

- Class 1-B Paved 568.34 Miles
- Class 1-B Gravel 740 Miles
- Class 1-B Native 91.54 Miles
- Class C City
- Class D 4507 Miles
- Private
- US Forest Service
- Ute Tribe
- Rail Road
- Federal or State
- Other Roads

1906 1:125000 USGS Map

- RS2477 1906 Alignment

US Forest Service

- US Forest Roads
- Motorized Trails
- Trails

Hydrography

- Lakes
- Rivers

Reference

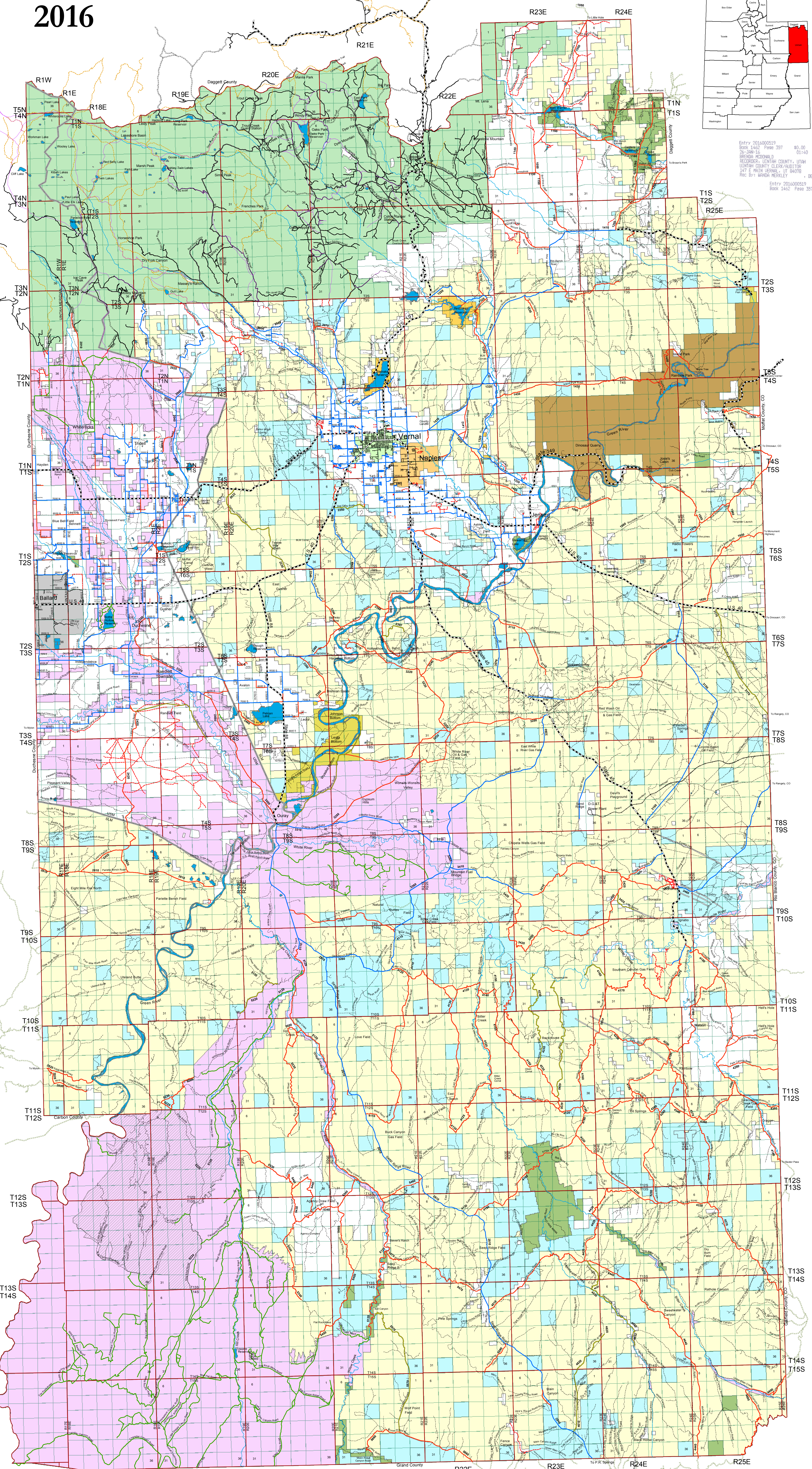
- Meridian Boundary
- Township
- Sections

Cities

- BALLARD
- NAPLES
- VERNAL

Land Status

- Bureau of Land Management 1,342,115 Acres 30.62%
- Ashley National Forest 269,954 Acres 6.26%
- Bureau of Reclamation 5,737 Acres 1%
- Dinosaur National Monument 12,209 Acres 1.81%
- Native American 425,885 Acres 14.7%
- Native American Deeded 47,465 Acres 1.65%
- National Wildlife Refuge 9,446 Acres 0.2%
- Private 435,179 Acres 10.28%
- State of Utah (SITLA) 262,628 Acres 9.1%
- Utah Department of Wildlife 26,549 Acres 0.7%
- State Protective Withdraw 384 Acres 0.01%
- WATER 7,298 Acres 0.2%



Ordinance No. 01-25-2016 01

Approved and adopted by the Board of Commissioners of Uintah County in a regular public meeting, and including all duly enacted ordinances as of the date in the lower right corner. ** Signed This 25th day of January, 2016

Mark Raymond
Mark Raymond Chairman

Mike McKee
Mike McKee

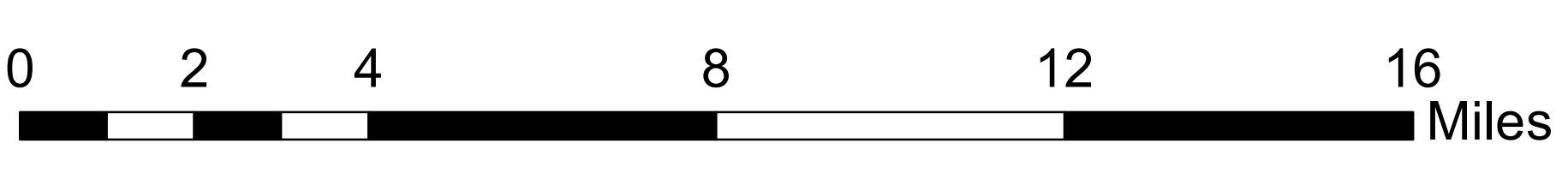
William C. Stringer
William C. Stringer
Attested by Uintah County

Clerk *Michael W. Wilkins*
Michael W. Wilkins



Note to Users:
The data contained on this map has been compiled from several sources with equipment which was deemed to be professionally accurate at the time that data was compiled. Much of the data has been independently verified by field inspection, which is ongoing. Every effort has been made to ensure for accuracy and content. The data herein is presented for purposes of this map only and should not be relied upon for other purposes including, but not limited to legal descriptions or claims.

Land Status within Uintah and Ouray Reservations may be subject to judicial interpretation.
Please Contact the Uintah County GIS Department (435-781-5460) with any questions or comments regarding the accuracy of the data contained herein.
Map projection: North American Datum 1983 (NAD83) Stateplane, Utah Central Zone, Feet 4302.



** Tuesday, January 26, 2016

Created by Uintah County GIS Department (435-781-5460) 525