

## Ware Board of Health Meeting

February 16, 2022 Hybrid Meeting / Selectmen's Meeting Room

Join Zoom Meeting <https://us06web.zoom.us/j/84069434897?pwd=YjFvYWlxRkdSdUFQZExUcHA1YmpDUT09>  
Meeting ID: 840 6943 4897  
Passcode: 288013

Present: John Desmond, Jennifer McMartin & (Katrina Velle via zoom)

In Attendance: Stephen Bell, Betty Barlow, Stuart Beckley, Kevin O'Regan, Selectman John Morrin & (Sai Palani via Zoom)

John called the meeting to order at 6:00 PM and announced the meeting is being audio recorded

### APPOINTMENT

6:05 Appointment: ReSource Waste Services of Ware LLC are present with John Farese, Business Manager; Fred Bruneau, Environmental Compliance Manager; Mike Janci, Ware Facility Manager & Steve Wright, Sanborn Head Engineer. John opened discussion with a little background information stating that in December the BoH received a letter from Town Manager stating that ReSource would like to increase their capacity and establish a Host Agreement. He also states an expansion would require Board of Health approval. Mr. Farese states they are construction debris recyclers with 2 facilities in NH, 1 facility in Boston and 1 in southern Maine and explained the steps they do including the final product being placed in rail cars in Ware and taken to Ohio. At this time much of their product from their other facilities have to go to third party for transfer and they would like to eliminate that by bringing more to Ware site for rail transfer out of state. He states they are not in the MSW business and will never be in the MSW business. He also states they are not requesting a modification to the Site Assignment. He then provided the board with a PowerPoint presentation explaining their proposed expansion. A PDF of this presentation is attached. Their proposed expansion project would be in 2 phases in a 2 year timeline. Phase 1 is to increase daily allowable tonnage from 750 to 1,125 and hours of operation from 7am – 4 pm to 6 am – 6 pm Mon – Fri and 500 tons 7am-1pm Sat. Phase 2 consists of building footprint increase of approximately 10,000 square feet (50 foot expansion to front of building) and increasing daily allowable tonnage from 1,125 to 1,400 Mon – Fri and 750 tons on Sat and addition of a couple extra rail lines. This type of expansion is a long process requiring approval in many steps from MEPA, MassDEP, Ware Board of Health and Ware Planning Board. Resident Mr. O'Regan expressed his concerns of a significant increase in hours of operation, traffic and noise from the facility. He asked if there was a way for him to be on a list to be notified whenever something is happening in the process of this proposed expansion which Mr. Farese stated he could be added to their email list for notification. Farese also states they also want to add a tarping station outside so they can tarp the rail cars for safety reasons. This will allow them to make sure people are not walking around on top of the rail cars and falling.

### Discussion 1: Harm Reduction update

The Board of Health and Selectmen will have a joint meeting on March 1<sup>st</sup> to discuss the direction the board is going with this Harm Reduction.

### Discussion 2: COVID update:

Stephen informed the board of Covid numbers & hospitalizations continuing to go down. As of last week Ware had 34 cases down from 65 previous week. There were 2 deaths that were not vaccinated.

**Vaccination rates:** Ware now at 65% fully vaccinated. Katrina asked if he had vaccination rates for school age children Stephen responded that he had numbers but not Ware school specific. Ages 5-11 are 21% fully vaccinated and 27% partially vaccinated. Ages 12-15 are 64% fully vaccinated and 54% partially and ages 16-19 are 48% fully vaccinated and 54% partially.

**School mask mandate:** The state is ending their school mask mandate on February 28<sup>th</sup>. After brief discussion Jennifer motioned to rescind their mask mandate, John seconded, Katrina not in favor

**Discussion 3: Test kits:** Stephen is working with the state with hopes of purchasing a small amount of test kits with grant money. The board would like Select Board to reconsider their decision to not buy test kits.

John reiterated previous discussions regarding housing referrals and stated a written policy needs to be created with other departments involved such as Building & Fire. He feels it is necessary to get this documented.

#### **DISCUSSION/ACTION:**

- Jennifer motioned to approve meeting minutes of January 19, 2022, John seconded, all in favor.

John motioned to adjourn at 7:30 PM, Jennifer seconded all in favor. Next meeting to be March 16, 2022 at 6:00PM

Respectfully Submitted,  
Betty Barlow

Meeting minutes approved 3/16/2022





## Proposed Expansion of ReSource Waste Services of Ware

ReSource Waste Services of Ware, which operates a rail transfer facility at 198 East Street in Ware, MA, proposes to increase its permitted capacity.

### About ReSource Waste Services of Ware

The facility is permitted as a construction and demolition (C&D) material handling and processing facility by the Massachusetts Department of Environmental Protection (MassDEP) and is authorized to process 750 tons per weekday and 500 tons per day on Saturdays, with a maximum annual permitted tonnage of 214,500 tons. In 2020, it processed approximately 120,000 inbound tons of material. It operates weekdays from 7 a.m. to 4 p.m. and on Saturdays from 7 a.m. to 1 p.m.

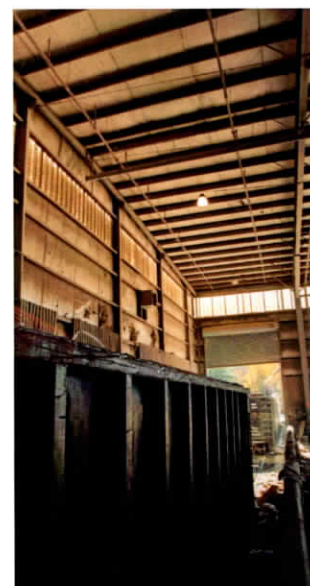
The facility received its site assignment permit from the Town of Ware in 2004 and received its Authorization to Operate from MassDEP in 2006. The facility had several owners/operators over the years and was acquired by our company on August 6, 2019.

The facility serves as a consolidation site for C&D residuals from ReSource's other facilities, and utilizes an on-site rail system to ship those residuals to landfills. The facility also accepts an incidental amount of a C&D materials from the local community. The facility employs six individuals and also supports indirect jobs associated with the haulers who deliver waste to the facility. Additional jobs in the region are tied to local goods and services related to the facility.

### The Proposed Project

ReSource Waste Services of Ware proposes a two-step project: First it proposes to increase its permitted capacity to 1,125 tons on weekdays (310,625 per year), which is anticipated to go into effect in the spring of 2023 upon receipt of permit approvals. It then proposes to increase its permitted capacity to 1,400 tons per day on weekdays and 750 tons per day on Saturdays for a total permitted capacity of 393,200 tons per year, which is anticipated to go into effect in the spring of 2024. The facility would not be expanded in the first phase. In the second phase, the facility size would be increased from the current size of 22,480 square feet to approximately 32,480 square feet and improvements would be made to the on-site rail system.

In addition, the company wishes to expand its weekday operating hours to 6 a.m. to 6 p.m.





## The Benefits

- ReSource Waste Services of Ware expects to create new jobs as the business expands. The company anticipates that the employee count will increase from six to ten.
- The company's annual operating budget is expected to double in size, leading to a larger economic impact in the community as its workers, vendors and suppliers visit the site and spend money in the Town and region.
- The company is in discussion with the Town of Ware to begin to pay a host community fee to the Town upon its approval to manage more volume.
- The company already provides in-kind and philanthropic support to the community, and that support will increase as the facility expands. The company also has begun initial outreach to organizations that serve environmental justice communities near the facility.

## Approvals Required

The project will require approvals from several agencies, and the general public will have an opportunity to provide comments and to participate in a community informational meeting. As part of the application process, the company will be conducting a traffic study, sound analysis, and air quality analysis.

The following entities must approve the project:

- Massachusetts Environmental Policy Act Office (MEPA), which is part of the Executive Office of Energy and Environmental Affairs (EEA)
- MassDEP
- Ware Board of Health
- Ware Planning Board
- Ware Conservation Commission (for Stage 2)



## About ReSource Waste Services

ReSource Waste Services is the largest processor of C&D debris in the New England region. The company's portfolio includes five processing facilities in Massachusetts, New Hampshire and Maine with permitted capacity of approximately 1.4 million tons, a trucking company and a waste collection business. The ReSource facilities accept virtually all forms of solid, non-hazardous C&D waste from waste handlers, demolition contractors, roofers, landscapers, property managers, contractors, and clean-out companies, recovering components of value and transforming them into reusable commodities. More information can be found at [www.resourcewasteservices.com](http://www.resourcewasteservices.com).

## Barlow, Betty

---

**From:** Stephen Wright <swright@sanbornhead.com>  
**Date:** Thursday, February 17, 2022 7:24 PM  
**To:** Bell, Stephen; Barlow, Betty  
**Cc:** John Farese (jfarese@resource-waste.com); Frederic Bruneau  
**Subject:** ReSource Ware PowerPoint Presentation  
**Attachments:** 20220216 ReSource Ware Board of Health Presentation.pdf

**CAUTION:** This email originated from outside of the Town of Ware organization. Do not click links or open attachments unless you recognize the sender and know the content is safe.

Thank you for meeting with ReSource Ware during the Board of Health's public meeting this past Wednesday. Your input was helpful and we're very appreciative of your time. For your files, I've attached is a PDF copy of the presentation given by John Farese from ReSource Waste Services.

We look forward to following-up with the Board as we move forward with the project. In the meantime, if you have any questions, please feel free to reach-out to us.

Regards,

1



Steve

**Stephen E. Wright, PE**  
Vice President

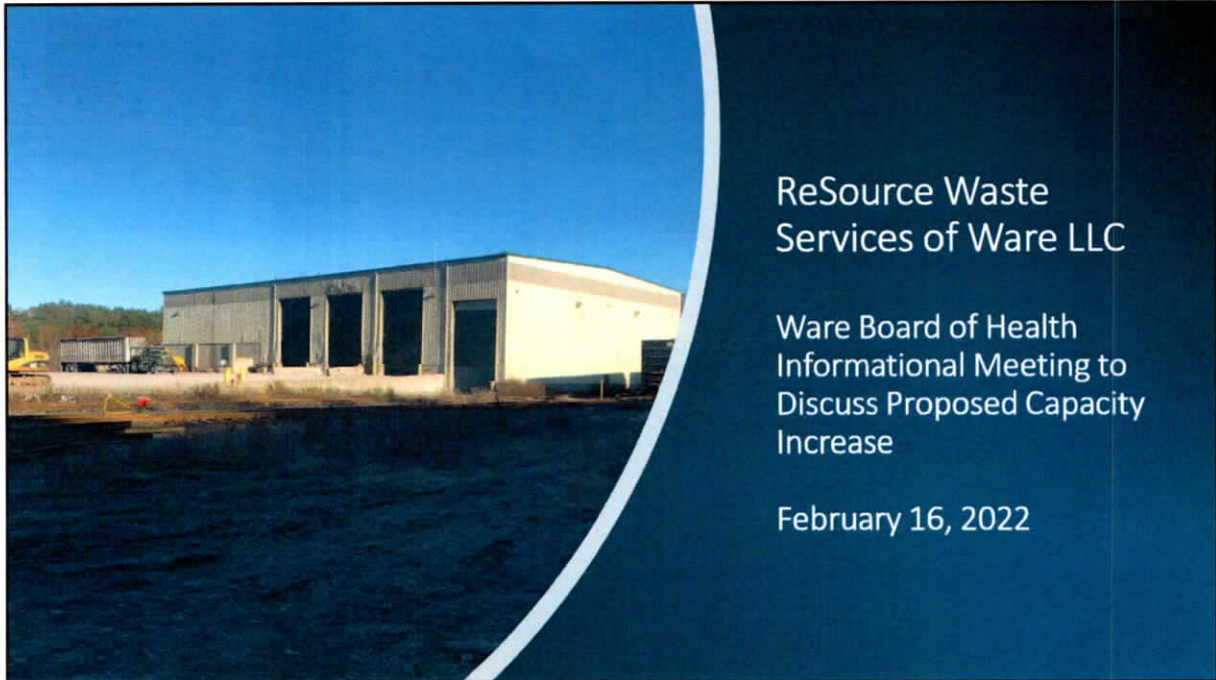
Licensed PE in MA, NH

**SANBORN | HEAD & ASSOCIATES, INC.**

D 978.577.1029 | M 617.548.6425 | 1 Technology Park Drive, Westford, MA 01886

Click here to follow us on [LinkedIn](#) | [Twitter](#) | [Facebook](#) | [sanbornhead.com](http://sanbornhead.com)

*This message and any attachments are intended for the individual or entity named above and may contain privileged or confidential information. If you are not the intended recipient, please do not forward, copy, print, use or disclose this communication to others; please notify the sender by replying to this message and then delete the message and any attachments.*



1

## Introductions

- John Farese – ReSource Waste Services, Business Manager
- Fred Bruneau – ReSource Waste Services, Envir. Compliance Manager
- Mike Janci – ReSource Waste Services, Ware Facility Manager
  - Steve Wright – Sanborn Head, Engineer

2



## Project Summary

The objective of the project is to increase the permitted capacity of the facility in two stages:

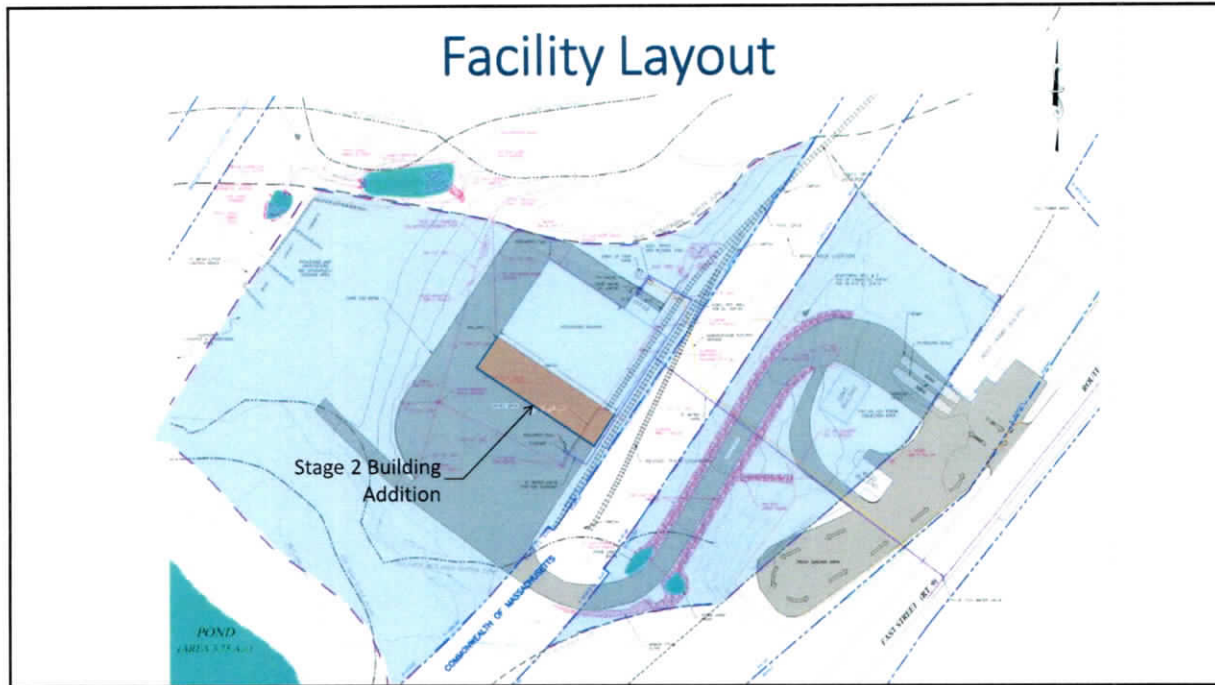
- **Stage 1** - Increase the permitted capacity of C&D material from existing 750 TPD to proposed 1,125 TPD (M-F) with no change to current Saturday permitted tonnage of 500 TPD. No increase in building footprint associated with Stage 1. Some interior alterations to the building would be performed.
- **Stage 2** – Increase permitted capacity of C&D from 1,125 TPD to 1,400 TPD (M-F) and a Saturday increase from existing 500 TPD to proposed 750 TPD. Building footprint increase of approximately 10,000 square feet anticipated with Stage 2, as well as rail improvements.
- Tonnage increase will allow ReSource Waste Services to deliver more processed C&D material from their other processing facilities to Ware for out-of-state disposal. A reduction in third party loads, many of which are small truck loads, will accompany the capacity increase.

3

## Summary of Proposed Capacity Modifications

Condition		Maximum Permitted Tons Per Day and Hours of Operation		Maximum Permitted Tons Per Year	Permitted Waste Type
		Mon – Fri	Sat		
Existing		750 (7 am to 4 pm)	500 (7 am to 1 pm)	214,500	C&D Only
Proposed	<u>Stage 1</u> Increase to this interim tonnage once Major Mod (BWP SW07) permit is received from MassDEP.	1,125 (6 am to 6 pm)	500 (No change to existing Sat hours)	310,625	C&D Only
	<u>Stage 2</u> Increase to this level once the building has been expanded to process quantities above 1,125 TPD up to 1,400 TPD.	1,400 (6 am to 6 pm)	750 (No change to existing Sat hours)	393,200	
Total Tonnage Increase (Stage 2 compared to Existing)		650	250	178,700	C&D Only

4



5

## Project Timeline

- Filing of Notice of Project Change (NPC) with MEPA – **March 2022**
- MEPA Certificate Issued – **April 2022**
- Submit Site Suitability Report to MassDEP for Site Assignment Modification (BWP SW38) – **April 2022**
- MassDEP Determination on BWP SW38 – **August 2022**
- Site Assignment Modification Issued by Board of Health – **October 2022**
- Obtain Planning Board Special Permit Modification for **Stage 1** Increase – **November 2022**
- Submit **Stage 1** BWP SW07 Permit Application to MassDEP – **December 2022**
- Receive **Stage 1** Permit from MassDEP – **by Spring 2023**
- Obtain Planning Board Special Permit Modification for Stage 2 Increase – **Late 2023/early 2024**
- Submit **Stage 2** BWP SW07 Permit Application to MassDEP – **Fall 2023**
- Receive **Stage 2** Permit from MassDEP – **by Spring 2024**

6



## Permit Application for Minor Facility Modifications

ReSource Ware will be filing a permit application with MassDEP to:

- Formalize name change from ReEnergy Ware LLC to ReSource Waste Services of Ware LLC.
- Change the facility's current permitted operational classification from "Construction and Demolition Waste Processing Facility" to "Construction and Demolition Waste Transfer Station".
- Install a new railcar tarping station outside of the building.
- Install a new large overhead door to access the tipping floor.
- Install a new 24-hour Fire Rover fire suppression system that will provide additional fire protection for the building. The system uses thermography cameras to detect hot spots that may exist in the C&D, which allows the system to be activated before a fire starts.

7

## Email Contacts

- [jfarese@resource-waste.com](mailto:jfarese@resource-waste.com)
- [swright@sanbornhead.com](mailto:swright@sanbornhead.com)

8

Present @ Wave BnH  
Wed 2/14/2022

Name

Address

John Fanese

928-640-4282

Kevin O'Regan

133 Church St.

FREDERIC BRUNEAU

John Morrin

Box

Mike Janci

55 Caren Rd Sturbridge