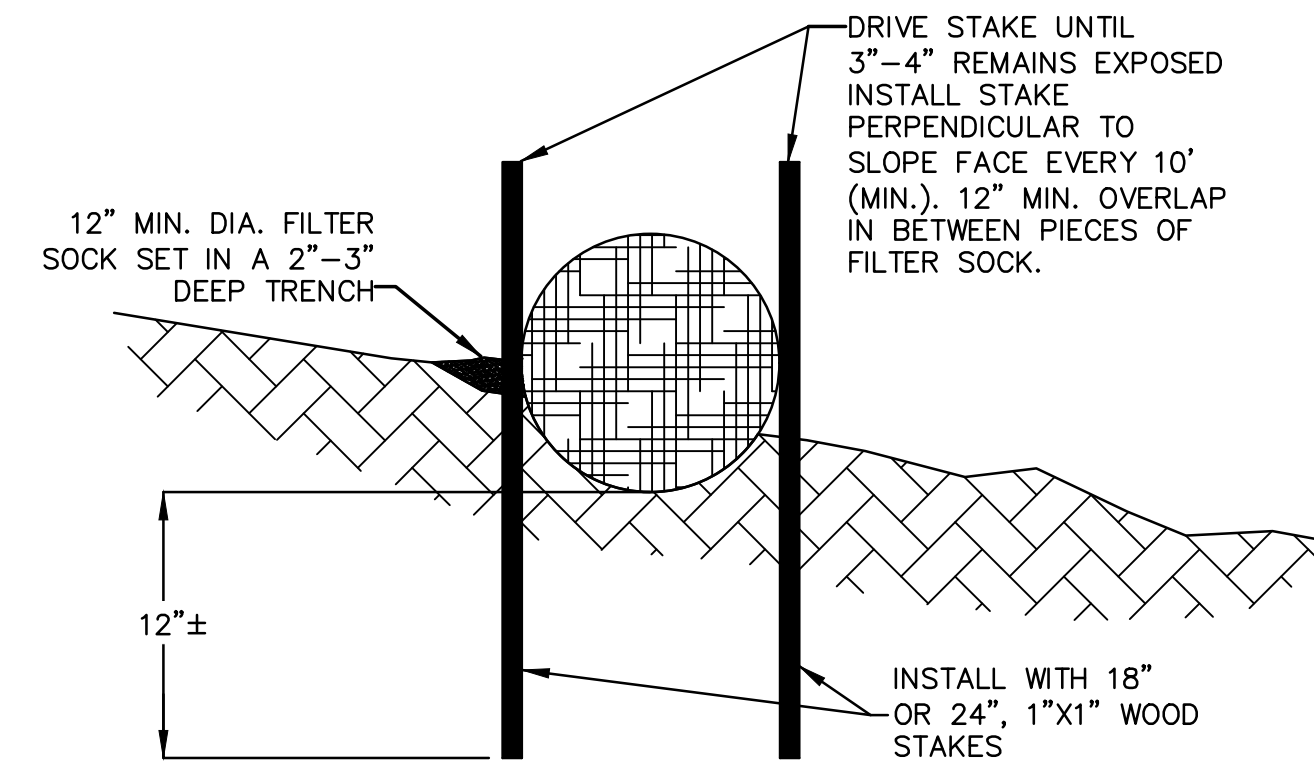
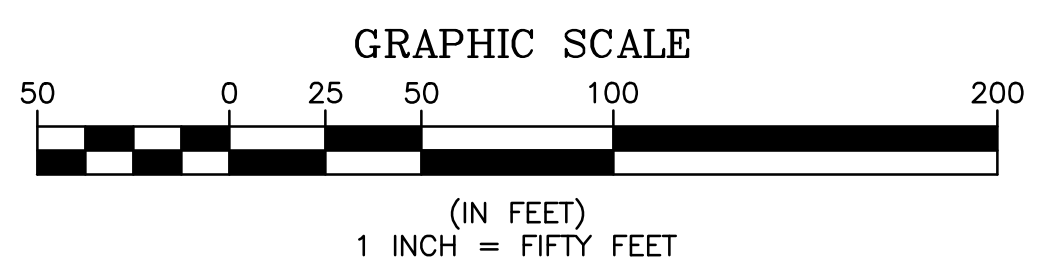
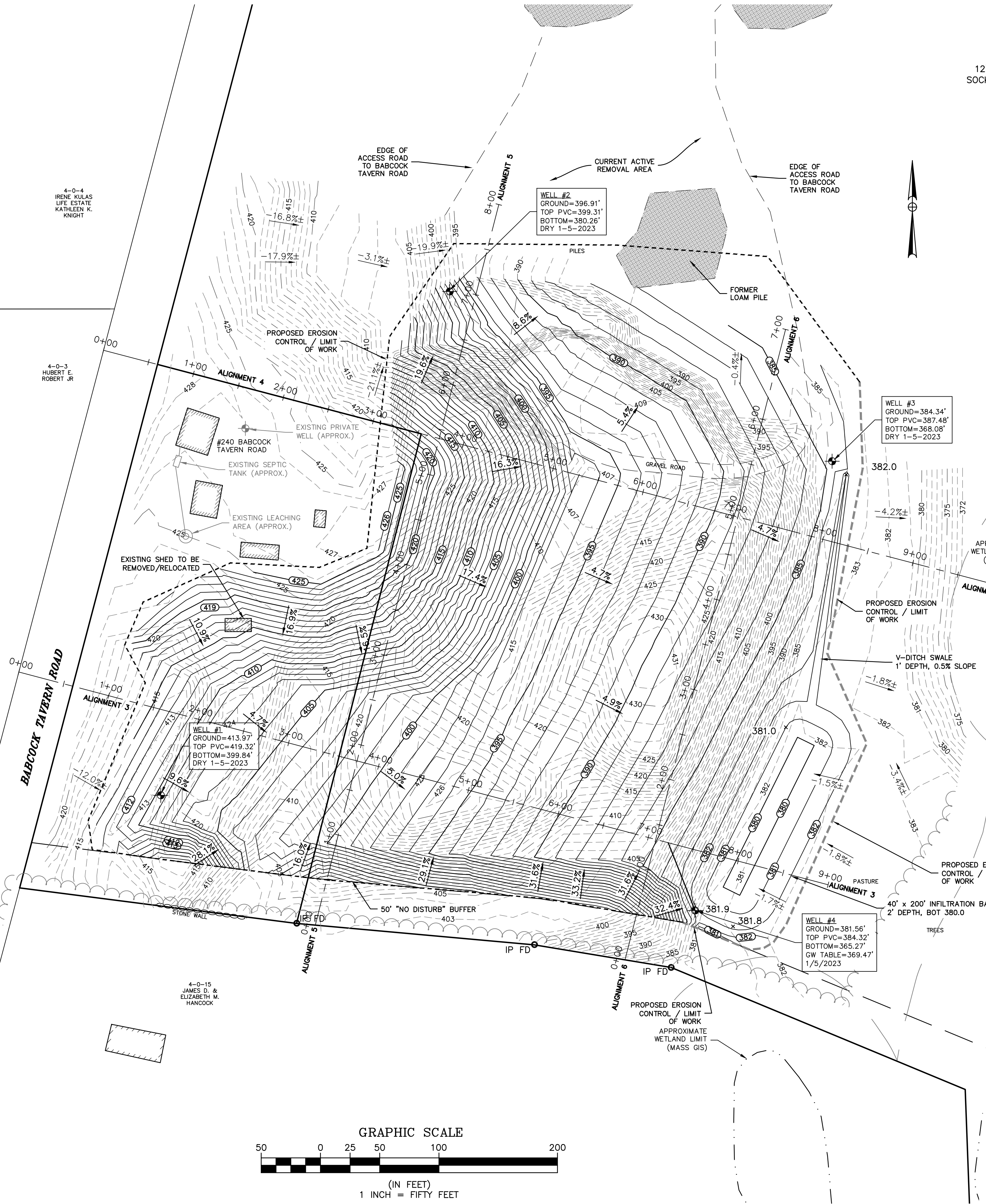


**LEGEND**

- |                        |     |
|------------------------|-----|
| #515 SILL= 278.92      |     |
| BUILDING               |     |
| SILL LOCATION SHOT     |     |
| CONTOUR (INDEX)        | 120 |
| CONTOUR (INTERMEDIATE) | 122 |
| OVERHEAD ELECTRIC      | OE  |
| EDGE OF VEGETATION     |     |
| EDGE OF HEDGE ROW      |     |
| FLAGGED WETLAND        | WS  |
| IRON FENCE             | x   |
| WOOD FENCE             |     |
| CHAIN LINK FENCE       |     |
| STONE WALL             |     |
| GUARD RAIL             |     |
| EDGE OF PAVEMENT       |     |
| EDGE OF GRAVEL         |     |
| PROPERTY LINE          |     |
| ABUTTER LINE           |     |
| UTILITY POLE W/GUY     |     |
| UTILITY POLE           |     |
| SIGN                   |     |
| MAILBOX                |     |
| CONIFEROUS TREE        |     |
| DECIDUOUS TREE         |     |
| TREE STUMP             |     |
| MONITORING WELL        |     |
| TEMPORARY BENCH MARK   |     |
| FD FOUND               |     |
| SB STONE BOUND         |     |
| CB CONCRETE BOUND      |     |
| IP IRON PIPE           |     |
| RB REINFORCING BAR     |     |
| DH DRILL HOLE          |     |

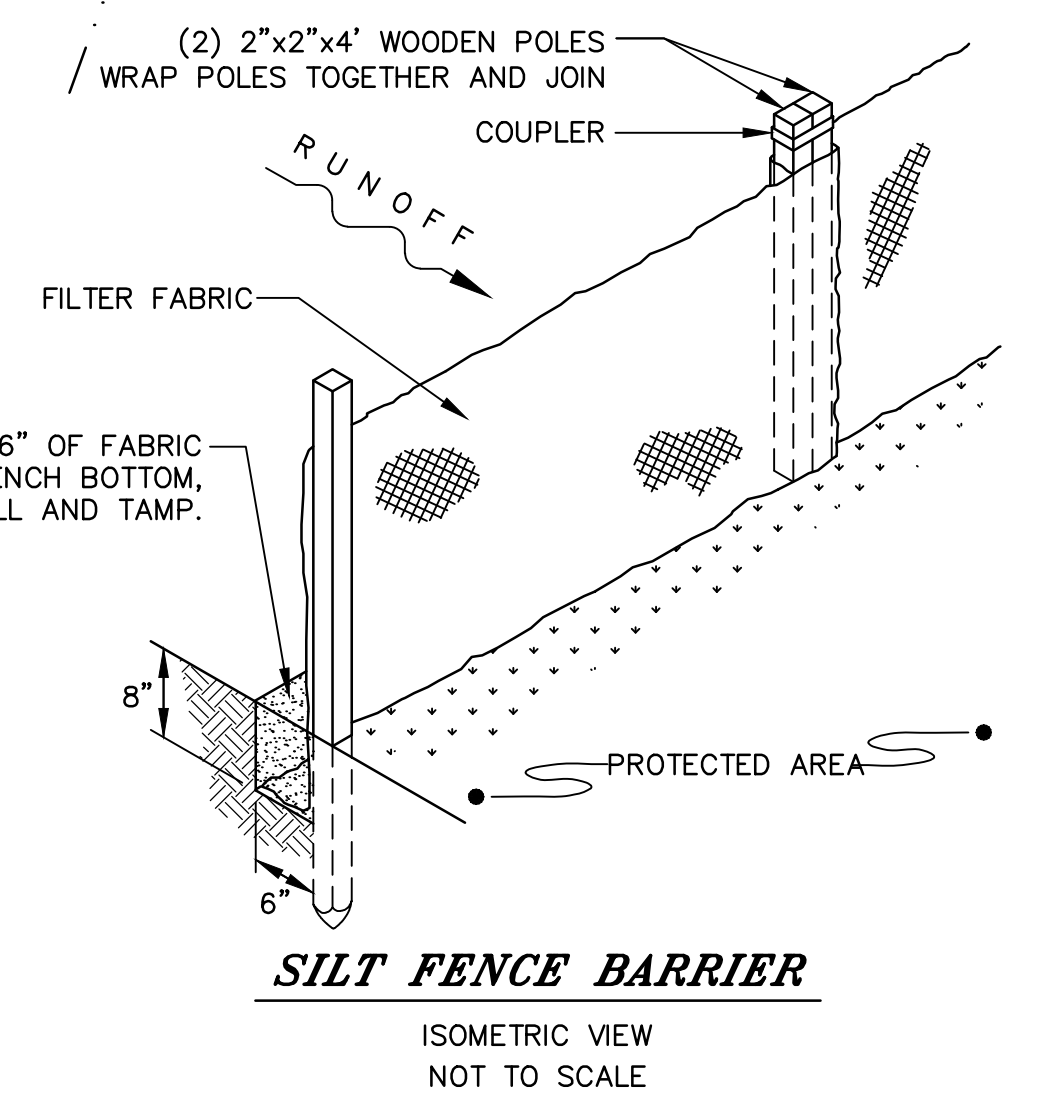
**NOTES:**

- LOCATIONS OF UTILITIES SHOWN HEREON ARE THE RESULT OF SURFACE EVIDENCE AS LOCATED BY FIELD SURVEY, PLANS OF RECORD, AND OTHER AVAILABLE SOURCES. THIS PLAN DOES NOT NECESSARILY DEPICT THE EXACT LOCATIONS OF ALL UTILITIES WHICH MAY EXIST AT THIS TIME WITHIN THE PREMISES SURVEYED.
- THE CONTRACTOR SHOULD VERIFY THE EXISTING CONDITIONS TO HIS SATISFACTION PRIOR TO BEGINNING ANY EXCAVATION. "DIG SAFE" SHALL BE NOTIFIED AT LEAST 72 HOURS PRIOR TO BEGINNING ANY WORK.
- ALL DISTURBED SURFACES SHALL BE STABILIZED WITH LOAM 4" & SEED AT THE COMPLETION OF WORK IN ACCORDANCE WITH MASSDOT STANDARDS.
- CONTRACTOR IS RESPONSIBLE FOR MANAGING INTERIM EROSION CONTROLS DURING REMOVAL PROCESS.



- NOTES:**
- SOCK SIZE DEPICTED IS FOR GENERAL USE. GREATER SLOPES MAY REQUIRE LARGER SOCK.
  - COMPOST MATERIAL MAY BE DISPersed ON SITE AT THE DISCRETION OF THE APPROVING AUTHORITY.
  - PRIOR TO SETTING THE SOCK REMOVE LOOSE LITTER, BRANCHES AND OTHER MATERIAL THAT MAY PREVENT THE SOCK FROM DIRECT CONTACT WITH SOIL.

**WATTLE**  
N.T.S.



NO.	DATE	BY	REVISIONS
1	1/17/23	DJF	PLANNING BOARD COMMENTS

**SHERMAN & FRYDRYK**  
Land Surveying, Engineering & Scientists  
A DIVISION OF HANCOCK SURVEY ASSOCIATES, INC.  
3 Converse Street, Suite 203  
Palmer, MA 01069

DESIGN: ARB/RMD  
DRAFTING: KIT/RMD  
CHECKED: JP  
APPROVED: DJF

SCALE:  
HORZ: 1"=50'  
VERT: N.A.  
DATE: 10/7/2022

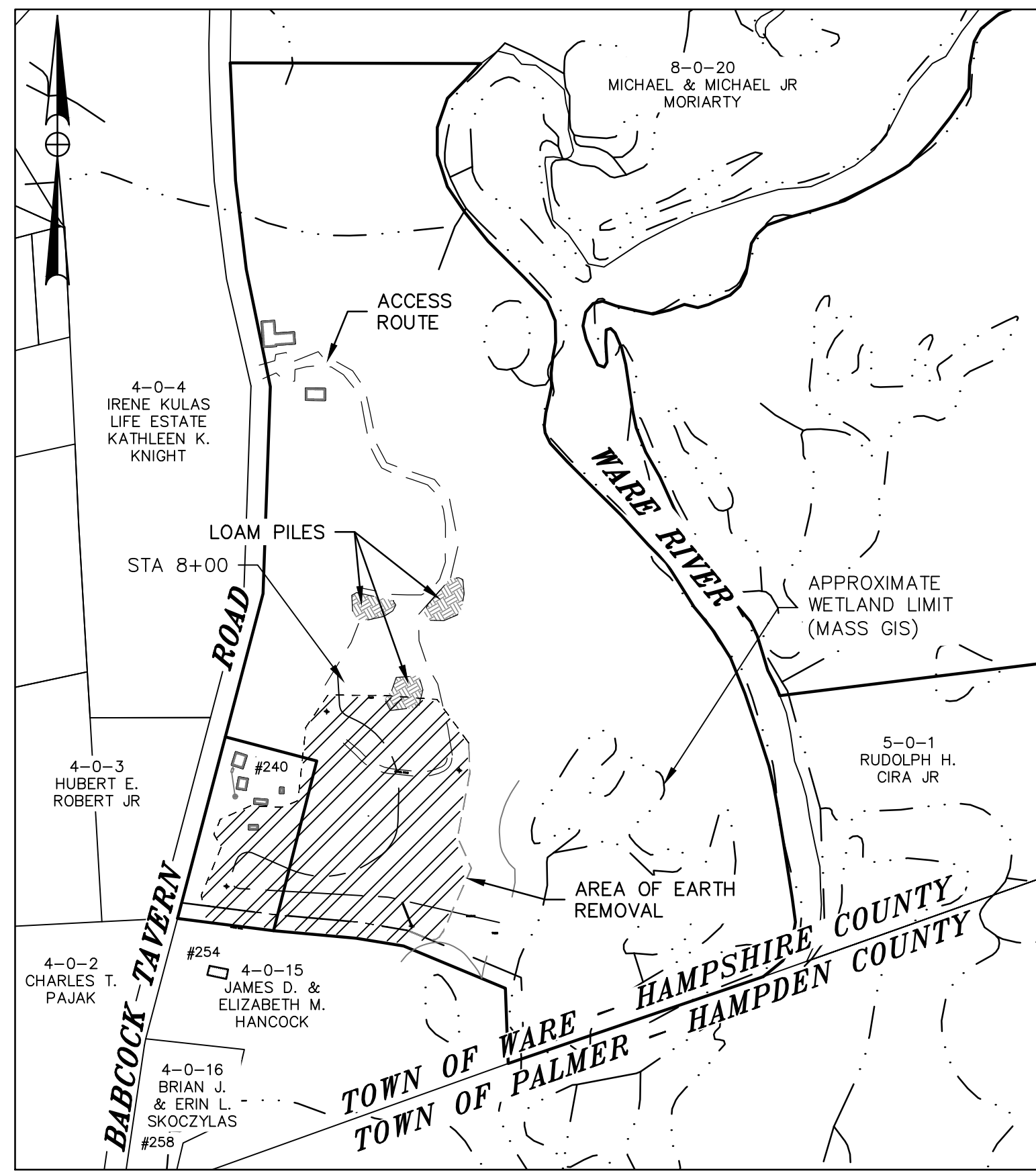
**CLOSE OUT GRADING**

**MONITORING WELL SKETCH & EARTH REMOVAL PLAN**

**PLAN OF LAND IN WARE, MA**  
PREPARED FOR  
**BOND CONSTRUCTION CORP.**

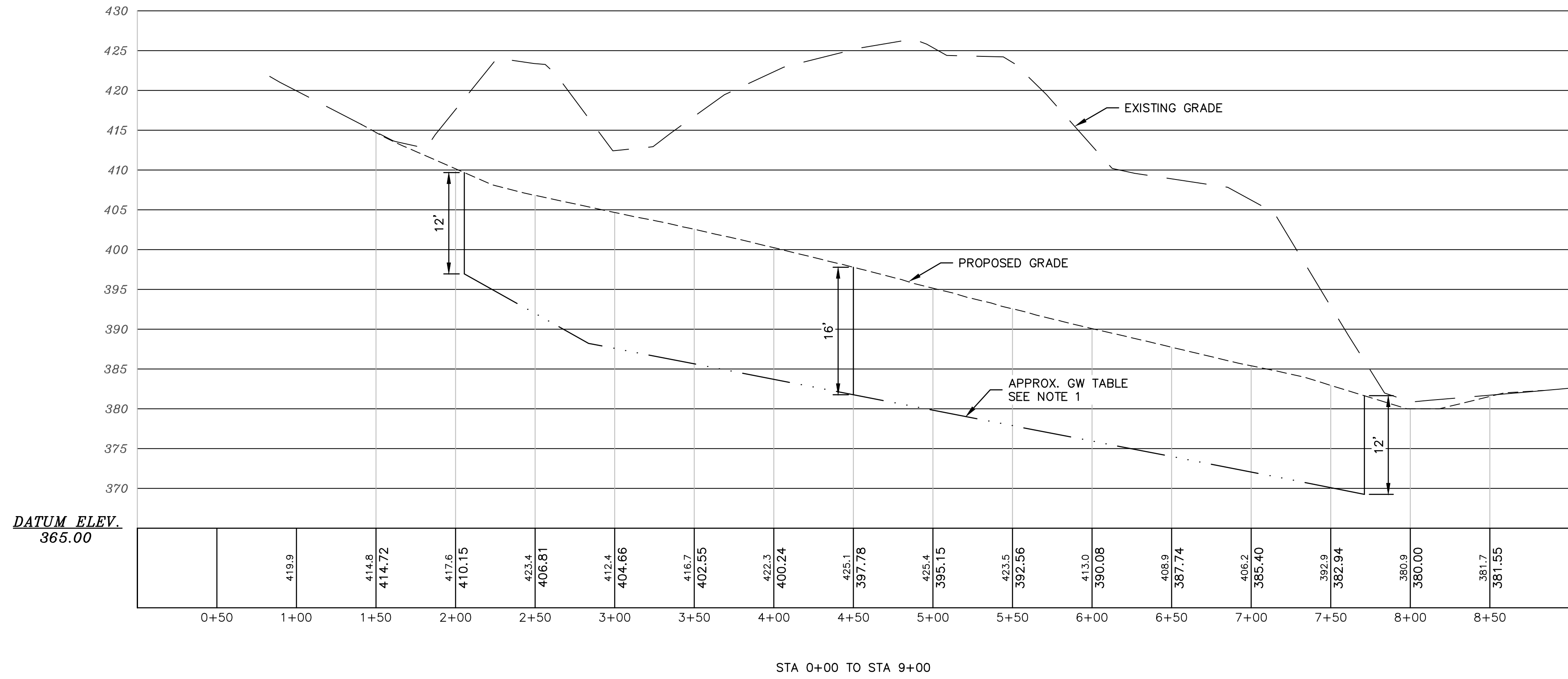
**PROJECT NUMBER**  
22009

**SHEET NUMBER**  
1 OF 3



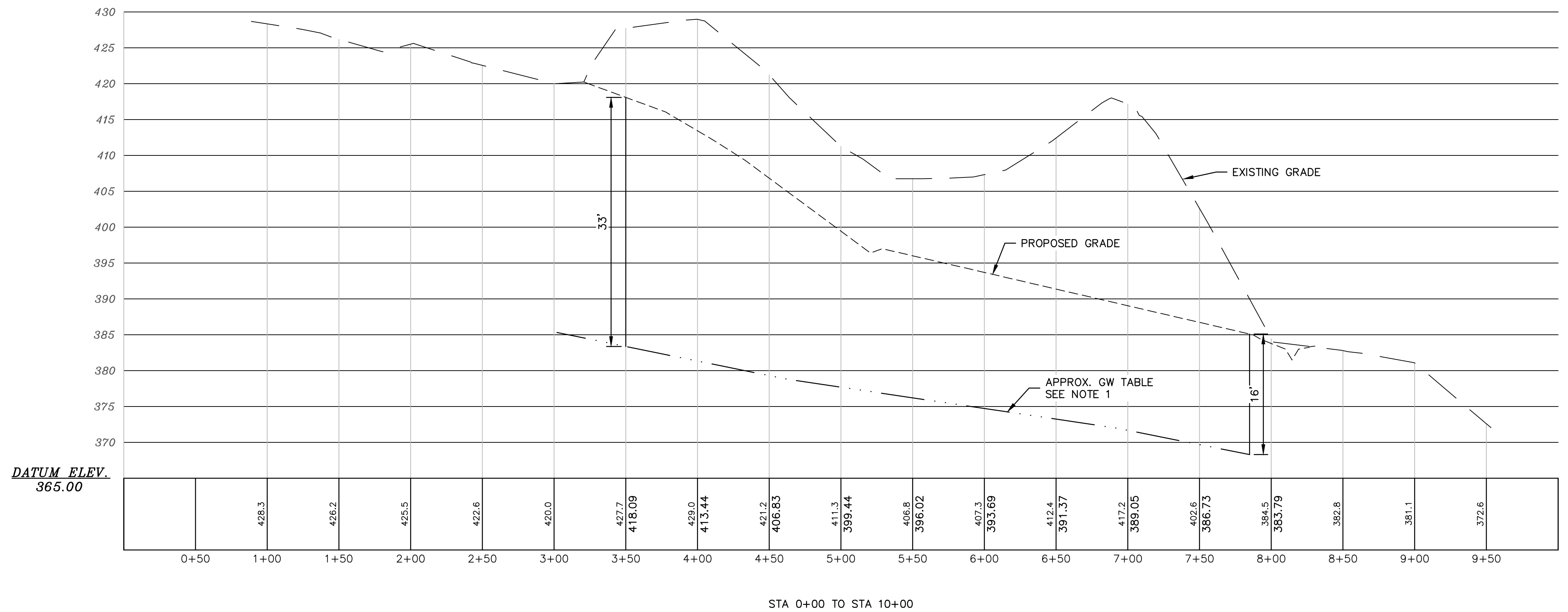
**LOCUS MAP**  
SCALE: 1"=400'

**Alignment - (3) PROFILE**  
SCALE: HORZ. 1"=50'  
VERT. 1"=10'



NOTES:  
1. APPROXIMATE GROUND WATER TABLE AS INTERPOLATED FROM BOTTOM OF DRY WELLS AND GROUNDWATER MEASURED IN WELL #4 BASED ON MEASUREMENTS TAKEN ON 1-5-2023

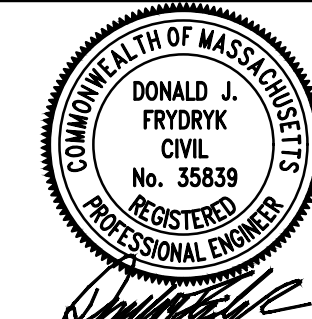
**Alignment - (4) PROFILE**  
SCALE: HORZ. 1"=50'  
VERT. 1"=10'



NO.	DATE	BY	REVISIONS
1	1/17/23	DJF	PLANNING BOARD COMMENTS

**SHERMAN & FRYDRYK**  
Land Surveying, Engineering & Scientists  
A DIVISION OF HANCOCK SURVEY ASSOCIATES, INC.  
3 Converse Street, Suite 203  
Palmer, MA 01069

DESIGN: ARB/RMD  
DRAFTING: KIT/RMD  
CHECKED: JP  
APPROVED: DJF

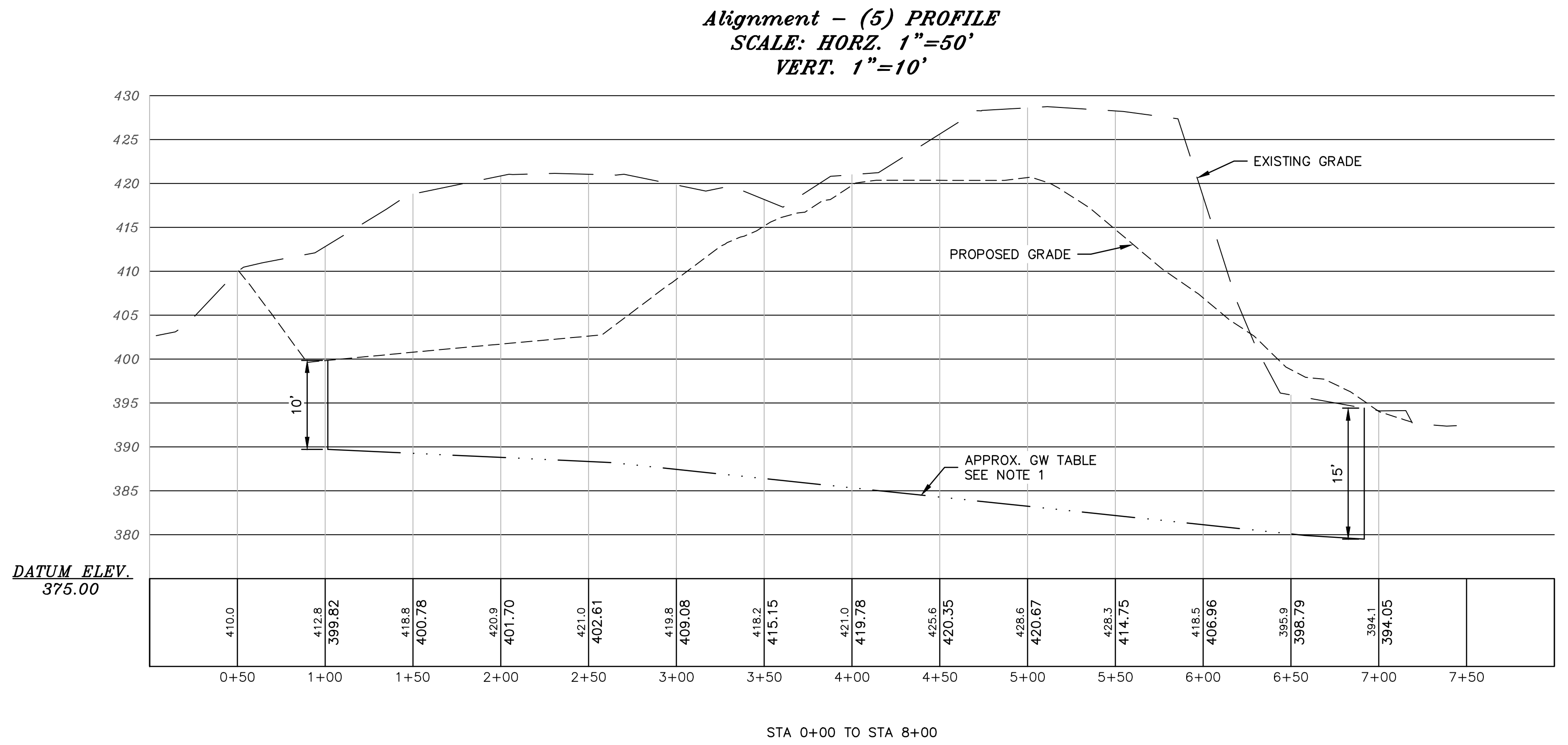
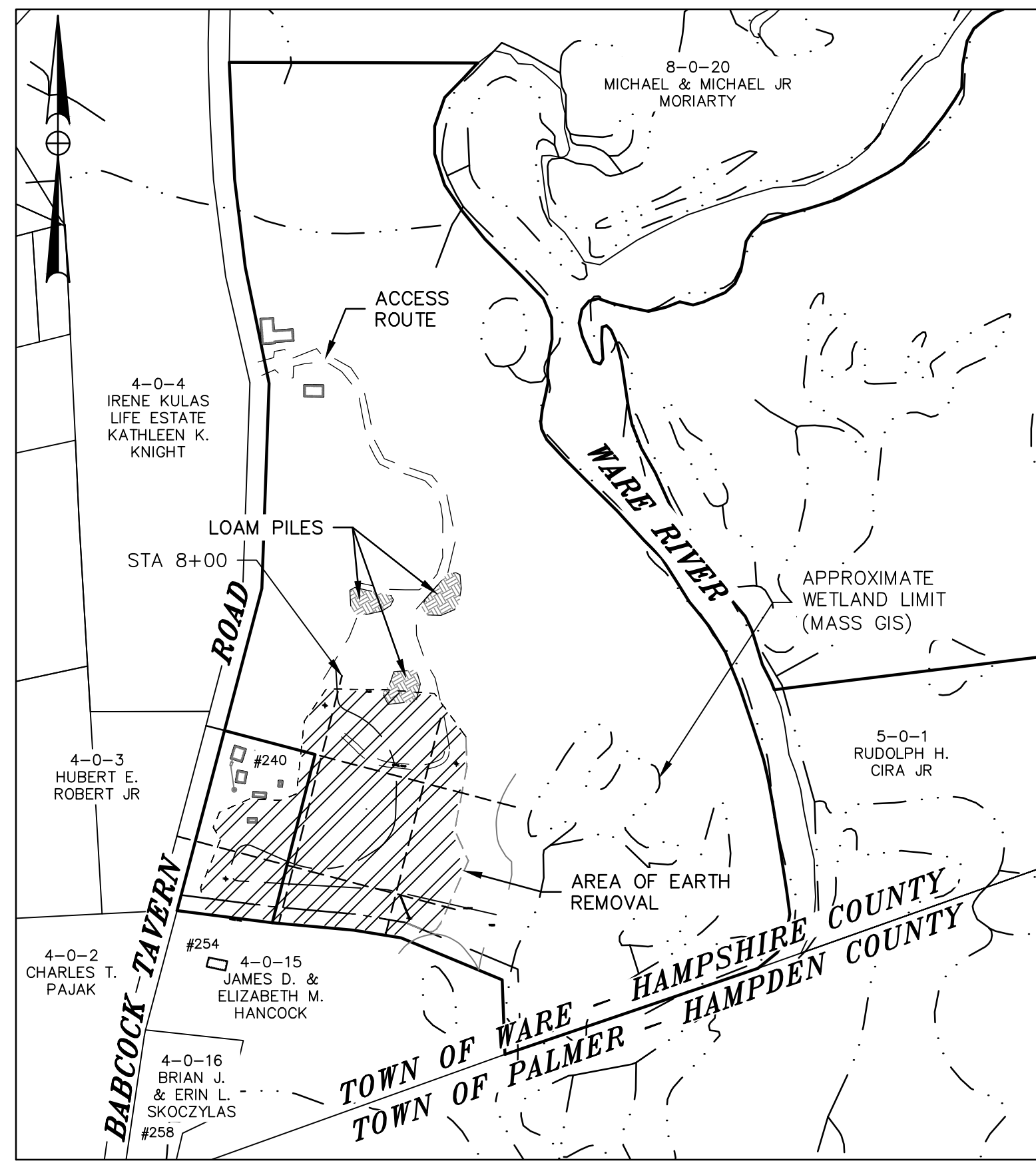


SCALE:  
HORZ: 1"=50'  
VERT: N.A.  
DATE: 10/7/2022

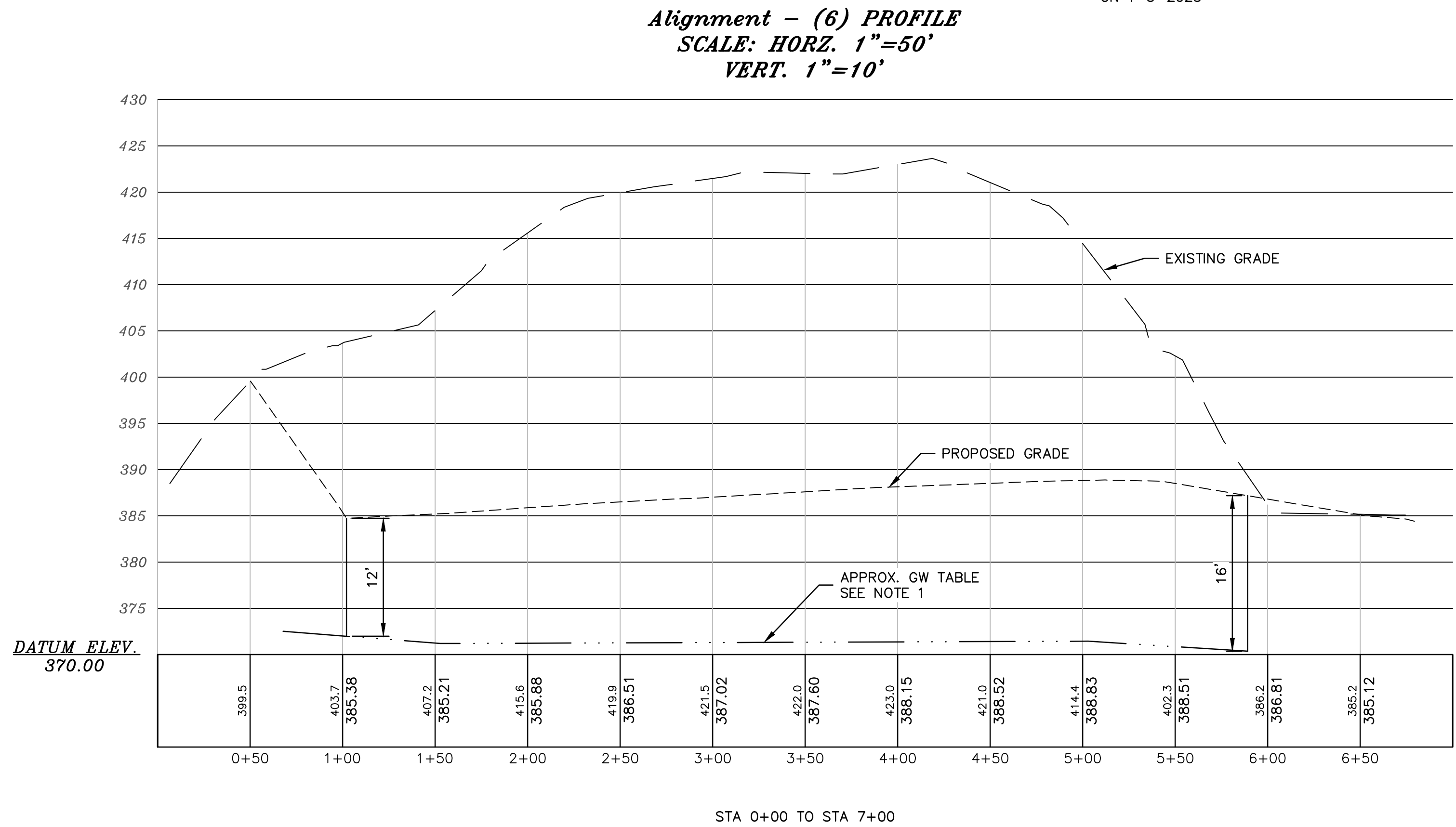
**CLOSE OUT GRADING**  
**MONITORING WELL & EARTH REMOVAL PROFILE**

**PLAN OF LAND IN WARE, MA**  
PREPARED FOR  
**BOND CONSTRUCTION CORP.**

PROJECT NUMBER  
22009  
SHEET NUMBER  
2 OF 3



NOTES:  
1. APPROXIMATE GROUND WATER TABLE AS INTERPOLATED FROM BOTTOM OF DRY WELLS AND GROUNDWATER MEASURED IN WELL #4 BASED ON MEASUREMENTS TAKEN ON 1-5-2023

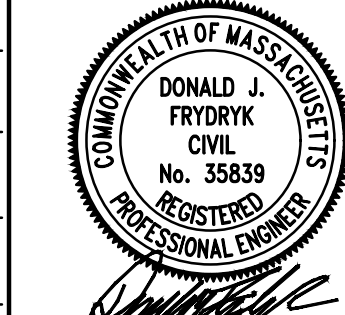


NO.	DATE	BY	REVISIONS
1	1/17/23	DJF	PLANNING BOARD COMMENTS

**SHERMAN & FRYDRYK**  
Land Surveying, Engineering & Scientists  
A DIVISION OF HANCOCK SURVEY ASSOCIATES, INC.  
3 Converse Street, Suite 203  
Palmer, MA 01069



DESIGN: ARB/RMD  
DRAFTING: KIT/RMD  
CHECKED: JP  
APPROVED: DJF



SCALE:  
HORIZ: 1"=50'  
VERT: N.A.  
DATE: 10/7/2022

**CLOSE OUT GRADING**  
**MONITORING WELL & EARTH REMOVAL PROFILE**

**PLAN OF LAND IN WARE, MA**  
PREPARED FOR  
**BOND CONSTRUCTION CORP.**

PROJECT NUMBER  
22009  
SHEET NUMBER  
**3 OF 3**