

Wolf River Emergency Action Plan



Waupaca County Emergency Management

Plan Year 2014

Wolf River Emergency Action Plan (Waupaca County)

I. Purpose and Intent

Areas in eastern Waupaca County that lie near the Wolf River have experienced substantial residential growth over the years. As development expands from the Cities and Villages to the surrounding, more rural areas, the riparian properties along the banks of the Wolf River offer not only an ideal opportunity for residential development and re-development, but also the added attraction of the recreation and aesthetic beauty that only waterfront lands can provide.

Unfortunately, the geographic limitations and the public road layout of the area also present some unique challenges. Specifically, regional flood elevations show that several roads would be inundated by floodwaters during a major (known as a 1% or 100 year) flood event. An event such as this would not only threaten the structures along the river, but also the safety and welfare of the individuals who live there. Federal and State floodplain regulations limit improvements to existing homes and replacement of homes in situations such as this, unless an emergency evacuation plan is developed by the affected municipalities.

Simply put, this emergency action plan is merely an orderly assessment of the site limitations and a systematic series of steps to provide an adequate early warning notification system which will allow the residents ample time for an orderly evacuation in the case of a flood emergency.

Waupaca County Emergency Management, in conjunction with Land Information, Highway Department, Land Conservation and Zoning Departments, and the Wisconsin Department of Natural Resources has prepared this plan to meet these Federal and State requirements, not only offering a necessary means for public and personal safety, but to afford the property owners more opportunities and options when they make important decisions on expansions and replacements of residential structures within these affected areas.

On behalf of all who participated in making this plan possible, we would like to thank everyone for their input and assistance in the development of this document. Our sincere hope is that the development, and more importantly the use of this plan will provide adequate protection of the resources and residents of the area, and yet afford reasonable and needed expansion of this area of Waupaca County, as our communities continue to prosper and grow.

II. Description of Area

The areas located within the identified flood areas (Annex A) include: the City of New London, Village of Fremont, and parts of the townships of Caledonia, Fremont, Mukwa, and Weyauwega. Populations affected include, year-round and seasonal homes, campgrounds, resorts, several apartment complexes, retail businesses, commercial and industrial facilities. Transportation routes affected include State Highway 54, County Highway X and County Highway F along with many city, town and village roads. Much of the area is recreational or undeveloped land areas.

III. Critical Facilities Affected by Flooding

Critical facilities (i.e., hospitals, schools, elderly care facilities) are identified in Annex C.

IV. Flood Watch/Warning Definitions

National Weather Service flash/flood definitions:

Flood Watch – Indicates that flooding is a possibility in or close to the watch area. Those in the affected area are urged to be ready to take action if a flash flood warning is issued or flooding is observed. These watches are issued for flooding that is expected to occur.

Flood Warning – A flood warning is issued for life/property threatening flooding that will occur. Very heavy rain in a short period of time can lead to flash flooding, depending on the local terrain, ground cover, degree of urbanization, amount of man-made changes to the natural river banks, and initial ground or river conditions. Dam breaks or ice jams can create flash flooding.

A Flood Evacuation Watch will be issued when the water level reaches 9.0 feet on the USGS Hydrologic Unit. This watch is a notice to the residents along the identified area along the Wolf River, the need to leave their homes in the near/ immediate future, if water levels continue to rise.

A Flood Evacuation Warning may be issued when the water level reaches 10.1 feet on the USGS Hydrologic Unit. All residents must leave their homes at this time. Visual site inspections of each identified area shall be conducted to determine if evacuation orders shall be deemed necessary.

GAUGE LOCATION.--Lat 44°23'32", long 88°44'25", in NE 1/4 SE 1/4 sec.12, T.22 N., R.14 E., Waupaca County, Hydrologic Unit 04030202, on right bank 100 ft. downstream from Pearl Street bridge in New London, 0.2 mi downstream from Embarrass River, and at mile 56.3.

DRAINAGE AREA.--2,260 square miles.

PERIOD OF RECORD.--March 1896 to current year. Prior to October 1913 monthly discharges only, published in WSP 1307.

REVISED RECORDS.--WSP 1114: 1943(M). WSP 1337: 1931. WDR WI-80-1: Drainage area.

GAUGE.--Water-stage recorder. Datum of gauge is 747.81 ft. NAVD of 1988 (levels by U.S. Army Corps of Engineers). Prior to Oct. 4, 1951, nonrecording gauge.

REMARKS.-- Gauge-height telemeter and data-collection platform at station.

COOPERATION.--Values prior to October 1913 taken from House Document 276, 72nd Congress, First Session (computed by Corps of Engineers).

V. Flood Evacuation Watch/Warning Notifications:

1. Upon notification of a Flood Watch or Warning issued for the Wolf River, the Waupaca County Communications Center shall:

a) Notify the Waupaca County Sheriff, New London Police Department, Fremont Police Department, Waupaca County Emergency Management, Waupaca County Highway Department, WI Department of Natural Resources Conservation Warden(s), New London Fire Department, Weyauwega Fire Department and Fremont Fire Department

b) Notify On-Duty Law Enforcement personnel

2. The Waupaca County Sheriff and/or Emergency Management Director shall keep the following informed of the status:

- Waupaca County Board Chair, to issue declaration, if needed
- Towns of Caledonia, Mukwa, Weyauwega, and Fremont Chair
- Waupaca County Highway Commissioner
- Waupaca County Health and Human Services Department
- Waupaca County Zoning Department
- New London, Weyauwega and Fremont Fire Departments

3. New London Police Department shall keep the following informed of the status:

- Mayor and City Administrator
- City Emergency Management Coordinator

4. Fremont Police Department shall keep the following informed of the status:

- Village President

5. Law Enforcement (Waupaca County Sheriff's Department, New London and Fremont Police Departments)

Upon receipt of flood evacuation warning is responsible for:

(1) Via squad car loudspeaker and siren or knock-on-door, as deemed necessary, shall assist in the notification to residents of the flood warning that has been declared for the area and to be aware of rapidly changing conditions.

(2) Via direct radio contact, Law Enforcement Officers/Deputies will notify Dispatch or the Incident Command Post that the affected residents have been notified.

Residents of the identified watch/warning areas are responsible for:

1. Monitoring river status: be alert to changing conditions, prepare for and/or evacuate if conditions warrant.
2. Dial 911 if immediate assistance is needed in evacuating. All other persons are responsible for evacuating themselves from the area.

In the event land lines (land telephone lines) are not functioning or unavailable, alternative communication methods should be used, such as cellular telephones, etc.

VI. Responsibilities and Duties

A. Waupaca County Emergency Management

Upon receipt of a flood warning and a request from the affected municipalities, the County Board Chair and/or Emergency Management Director will determine the need to activate the Emergency Operating Center and order appropriate level of staffing and take the following actions:

1. Activation of Emergency Operations Center, if necessary.
2. Provide and maintain for the Department of Health and Human Services and the Red Cross a list of residents that may need assistance in evacuation (i.e., elderly, disabled, etc.).
3. Coordinate with County agencies and advise Town Officials.
4. Coordinate with the City of New London and the Village of Fremont.
5. Notify Media.

6. Ensure that the County Highway Commissioner/On-call Duty Personnel have been notified and have instituted the appropriate field incident command.
7. Notify Wisconsin Emergency Management and request appropriate assistance.
8. Assist with the procurement of sand and sand bags and other appropriate supplies once local resources are exhausted.
9. Organize emergency manpower to assist with sandbagging operations if local resources have been exhausted.
10. Initiate evacuation, shelter, emergency manpower, financial tracking and other functions as necessary.
11. Ensure that information is disseminated through Sheriff's Department Dispatch Center to emergency staff and to the general public via local media, CodeRed, Local Emergency Broadcast system, and other appropriate systems.
12. If appropriate, issue a declaration of local emergency.
13. When damage has occurred, activate the Waupaca County Damage Assessment Team to outline damaged areas; inspect for chemical leakage and contamination, and compile 12 and 72 hour damage reports for Wisconsin Emergency Management.
14. Request frequent Emergency Operations Center staff briefings and updates.
15. Ensure that the local media and citizens are updated on the current situation through Local Emergency Broadcast system, telephone and other appropriate methods.
16. Coordinate Disaster Assistance Centers as needed.
17. When situation has returned to normal, rescind declaration of local emergency, close EOC and resume normal activities.

B. Law Enforcement

Upon receipt of notification that a flood evacuation warning is about to occur, the law enforcement will be responsible to:

1. Assess the situation.

2. Establish one field Incident Command Post(ICP) for the flood event to include representatives from affected municipalities functioning under a Unified Command System.
3. Via squad car loud speaker and siren, notify residents that a flood warning has been declared and that flooding is imminent. Residents should be aware that conditions may change rapidly and that it is the responsibility of the residents to monitor flood status and prepare for evacuation.
4. Via direct radio contact, the Deputy(ies) will notify ICP that the residents have been notified.
5. Establish traffic control, staging area and site security. If injuries, notify Emergency Medical Services.
6. Assist Fire Service and EMS with transportation of elderly and handicapped individuals when evacuation is ordered.
7. Assess need for auxiliary, volunteer and/or mutual aid support.
8. Request additional personnel and equipment, including mobile command post, as necessary.
 - a) Establish command post log/in and log/out procedure for all Emergency Services Personnel.
 - b) Establish emergency pass I.D. system.
 - c) Establish site Public Information Officer who will conduct media briefings and escorted tours of the incident area.
 - d) Determine with the County Emergency Management Director the appropriate level of emergency activation, and whether EOC staffing will be required.
 - e) If Emergency Operations Center is activated, coordinate all press release information through the County Public Information Officer and staff at the EOC.
 - f) Provide security for other off-site functions if necessary, such as temporary morgue, emergency management briefing and equipment staging areas as necessary.
 - g) Participate in damage assessment operations.
9. Documentation of the event: each agency will keep a log of events and document actions taken, track expenditures associated

with the disaster. These will be submitted to Waupaca County Emergency Management.

C. Fire Services

Upon receipt of notification that a flood evacuation warning has occurred in Waupaca County, the fire services will be responsible for the following:

1. Designated personnel will report to the Incident Command Post and/or Emergency Operations Center, if EOC is activated.
2. Assist law enforcement with establishment of field Incident Command Post.
3. Assist law enforcement with the notification of residents and the rescue of injured or trapped persons where appropriate.
4. Assist Law Enforcement and EMS with the transportation of elderly and handicapped individuals when evacuation is ordered.
5. Assist Highway/Public Works with sandbagging and flood control operations when requested.
6. Coordinate utility shut-off.
7. Documentation of the event: each agency will keep a log of events and document actions taken, track expenditures associated with the disaster. These will be submitted to Waupaca County Emergency Management.

D. Highway/Public Works Department

Upon receipt of notification that a flood evacuation warning has occurred in Waupaca County, the Highway/Public Works group members will take the following actions:

1. Designated personnel will report to the Incident Command Post and Emergency Operations Center, if EOC is activated.
2. Assist Law Enforcement with traffic control and barricades.
3. Check specific supplies needed such as sandbags.
4. Anticipate manpower and equipment needs, especially if extensive damage is likely to occur.
5. Send a representative to the Incident Command Post and implement necessary flood control techniques.

6. If additional resources are needed request should be made through the Incident Command.
7. Perform debris clearance, snow removal, etc., as necessary.
8. Documentation of the event: each agency will keep a log of events and document actions taken, track expenditures associated with the disaster. These will be submitted to Waupaca County Emergency Management.

E. Emergency Medical Services

In an imminent or actual disaster situation, the Emergency Medical Services will be notified and will take the following actions:

1. Designated personnel will report to the Incident Command Post and Emergency Operations Center, if EOC is activated.
2. Assure that notification is made to hospitals and health care facilities as appropriate.
3. Assure that the necessary resources, such as transportation vehicles, emergency supplies, etc. are being provided.
4. Assist Law Enforcement and Fire services with the transportation of elderly and handicapped individuals when evacuation is ordered.
5. Documentation of the event: each agency will keep a log of events and document actions taken, track expenditures associated with the disaster. These will be submitted to Waupaca County Emergency Management

F. Department of Health and Human Services

In an imminent or actual disaster situation, Health and Human Services will be notified and will take the following actions:

1. Designated personnel will report to the Incident Command Post and/or Emergency Operations Center, if EOC is activated.
2. Ensure receipt of intelligence on the disaster type, scope, etc.
3. Assure that notification is made to hospitals and health care facilities as appropriate.

4. Assure the operational capability of the department and notify personnel to standby for assignments as necessary.
5. Assure that the necessary resources, such as transportation vehicles, emergency supplies, etc. are being provided.
6. Assess associated potential dangers and coordinate necessary actions to alleviate same.
7. Keep ICP/EOC and the Public Information Officer informed as to the risks to the public health and counter measures as appropriate to minimize the risks.
8. Provide a public health advisory regarding contaminated water, contaminated food products, proper disposal of human waste, and proper disposal of garbage, injury prevention and treatment (availability of free Tetanus vaccine) and reoccupying homes.
9. Documentation of the event: each agency will keep a log of events and document actions taken, track expenditures associated with the disaster. These will be submitted to Waupaca County Emergency Management.

G. Red Cross and Department of Health and Human Services

1. If activated, report to the County Emergency Operations Center.
2. Upon notification by Waupaca County Emergency Management, the Department of Health and Human Services will coordinate with the American Red Cross in opening and managing shelter operations including:
 - Alerting appropriate staff and opening shelters (reference Red Cross Standard Operating Procedures)
 - Notifying owners/operators of facilities where shelter space is to be made available
 - Opening reception centers.
3. Prioritize use of personnel and equipment to provide for continuity of existing services.

4. Establish communications with local health agencies and other volunteer agencies.
5. Establish communications with regional and state health and human services offices and request assistance, if needed.
6. Advise Emergency Operations Center personnel where shelters are located.
7. Identify and provide human services for special needs groups, particularly at shelters.
8. Assist Law Enforcement and Fire Departments with the transportation of elderly and handicapped individuals when evacuation is ordered.
9. Provide psychological counseling and crisis intervention to disaster victims, including sick, injured and bereaved.
10. Coordinate Critical Incident Stress Debriefing of public safety and rescue personnel, along with residents affected by incident/
11. Documentation of the event: each agency will keep a log of events and document actions taken, track expenditures associated with the disaster. These will be submitted to Waupaca County Emergency Management

INFORMATION DISSEMINATED AT EACH LEVEL IS DETAILED AS FOLLOWS:

1. Public information and media plan:
The public will be informed of flood watches and warnings according to guidelines listed above. At the appropriate stage Public Health information will be disseminated.
2. Flood fighting:
Temporary protective measures such as sandbagging, protection of buildings and other structures, and securing electric and gas services may be implemented.
3. Evacuation Information and Routes:
This information will be disseminated by Law Enforcement and Rescue Teams. Law Enforcement personnel will initially determine adequate evacuation routes from the affected area in consultation with County Highway Commissioner and Fire Departments.

4. Shelter and Food Sites:
Specific instructions for shelter locations and activities shall be issued via Law Enforcement and Emergency Management.
5. Security in evacuated areas:
Law Enforcement shall be responsible for implementing and maintaining security for the affected areas.
6. Utility Shut Off:
Affected utility companies will be responsible for monitoring their systems and will advise Emergency Management as needed. Clearing of power and gas lines will be done by trained crews sent in by the utility companies. The field command may request, through the Waupaca County Dispatch Center, that services be shut off in the affected area.
7. Documentation of the event:
Each agency will keep a log of events and document actions taken. These will be submitted to Waupaca County Emergency Management.

VII. RE-ENTRY AND RECOVERY

A. Signal of Re-entry

Waupaca County Emergency Management shall monitor the flood level for eventual re-entry into the affected areas. Decisions on re-entry shall be made by affected Municipal Officials and Emergency Management Office based on monitoring reports that safety concerns have been minimized.

B. Public Information on Re-entry

The public will be informed when it is safe to re-enter the area. Re-entry procedures will be provided at that time. Transportation routes will be detailed by Law Enforcement and help will be provided by Emergency Services as needed. Sanitation concerns will be addressed by Department of Health and Human Services.

C. Damage Reports

Waupaca County Emergency Management is responsible for compiling a preliminary damage assessment report and submitting it to Wisconsin Emergency Management within 24 hours. Waupaca County Emergency Management is the lead agency for coordinating damage assessment activities.

Damage assessment includes both public and private sector losses such as roads, buildings, utilities, personal property and so on. The Office of Emergency Management will rely on field personnel for collecting and

reporting damage; and approximate costs of clean-up. In addition, record keeping equipment, manpower costs, utility damages will be in accordance with instructions outlined in the Wisconsin Guidelines for Assessing and Documenting Disaster Damage.

The Land Information Office will consult tax rolls and property assessments for specific information on losses. Furthermore, the Zoning Office, in cooperation with insurance companies, will make accurate estimates of victim damages as well as uninsured losses and the replacement cost of the same. Disaster assessment agencies will also conduct door-to-door surveys to provide needed information.

D. Re-entry and Recovery

When flooding hazards have mitigated, as determined by status reports from field personnel, the Office of Emergency Management shall coordinate the implementation of re-entry and recovery activities.

VIII. Plan Review Process

The Wolf River Emergency Action Plan (Waupaca County) shall be distributed to the affected municipalities so they can post it for the citizens to be informed about procedures in case of flooding and of any changes to this FLOOD EVACUATION PLAN.

Waupaca County Emergency Management, Sheriff's Department, Zoning Office, other County Officials/Departments and Emergency Services may recommend periodic changes to the plan as needed. Any recommended changes shall be directed to the Emergency Management and the Zoning Office. No changes shall be made unless agreed upon by the Wisconsin Department of Natural Resources and Waupaca County Emergency Management.

The plan should be reviewed each year to determine whether it should be revised based on development patterns occurring during the year. Local Officials having the responsibility of reviewing this EMERGENCY ACTION PLAN include the following:

1. Waupaca County Emergency Management
2. Waupaca County Sheriff
3. Waupaca County Highway Commissioner
4. Mukwa Town Board Officials
5. Weyauwega Town Board Officials
6. Fremont Town Board Officials
7. Caledonia Town Board Officials
8. New London City Council

9. Fremont Village Board
10. Fremont, New London, Weyauwega Fire Departments
11. Local Law Enforcement Agencies
12. Any other local rescue and relief personnel indicated in the resource section of this plan

These local officials may make periodic recommendations to Waupaca County Emergency Management and Zoning Office to change or add any information that may be pertinent to the FLOOD EVACUATION PLAN.

IX. Summary:

This EMERGENCY ACTION PLAN is intended to minimize potential damaging effects to human inhabitants and personal property of areas identified in this plan. Many of the landowners live in a designated floodplain area of the Town of Mukwa, Weyauwega and Fremont or lack dry land access in the event of a flood, which puts them in potential danger should a flooding event occur in the area. This plan details emergency procedures and public information that will be taken by local, county and area-wide officials in the event that potential flooding may occur.

RESPONSE TIME TABLE (0-48 HRS)

Response Timeline:

1.) 0-2 Hours

- Establish Incident Command System(Unified Command)
- Notify all of the agencies with a role in your plan
- Determine the extent and numbers of people, buildings and businesses affected by the flooding
- Begin evacuation, conduct search and rescue as needed
- Open shelters as needed
- Determine if the area needs access control and set up roadblocks
- Begin to determine the types and amounts of outside assistance you may need
- Notify Wisconsin Emergency Management Regional Director
- Begin public information activities and issue protective actions for the public if necessary
- Hold one or more command staff briefings
- Consult your agency's Response Checklist
- Activate mutual aid agreements
- Consider the need to declare a State of Emergency

2.) 2-4 Hours

- Continue evacuations and search and rescue operations as needed
- Continue public information activities
- Consider the need for 24 -hour operations and the establishment of 12 hour shifts
- Continue shelter operations as needed
- Notify Public Health of the event
- Begin preparations for establishing a Pass System
- Activate damage assessment teams
- Assign people to handle request for assistance and to track the needs of Special Populations
- Assign people to track requests for information on disaster victims
- Assign people to track offers of assistance and donations
- Determine how debris will be disposed
- Begin to determine the public health effects of the disaster
- Begin to consider the needs of the Special Populations
- Begin to take care of the needs of the responders
- Consult your agency's Response checklist
- Hold one or more Command Staff Briefings

3.) 4-12 Hours

- Continue evacuations and search and rescue operations as needed
- Continue public information activities
- Prepare for the next shift to take over
- Consider the need for ongoing mutual aid
- If necessary, activate the Pass System
- Inform the hospital(s) of potential casualties
- Continue Damage Assessment activities compile the information collected by the damage assessment teams and report to the state
- Determine sand bagging needs if appropriate
- Identify debris disposal locations
- Prepare a prioritized list of repairs to critical facilities and transportation routes
- Begin clean-up activities on public and private property if possible
- Continue to track the requests for assistance and the needs of Special Populations
- Continue to track requests for information on disaster victims
- Continue to track offers of assistance and donations
- Continue shelter operations as needed
- Address the public health needs of the disaster victims and responders
- Take care of the personal needs of the responders
- Conduct several command staff briefings
- Consult your agency's response checklist
- Brief the next shift
- Coordinate with utilities in the restoration of service(s)
- Anticipate and address Public health issues

4.) 12-24 Hours

- Continue evacuations and search and rescue operations as needed
- Continue public information activities
- Continue operation of the Pass System if necessary
- Continue damage assessment activities and submit UDSR
- Continue repairs to critical facilities
- Consider the need for ongoing mutual aid
- Inform the hospital(s) of casualties as necessary
- Continue clean-up activities on public and private property
- Take debris to an appropriate land fill
- Coordinate the utilities in the restoration of service
- Continue shelter operations as needed
- Keep records of agency expenses
- Anticipate and address Public Health needs
- Track the requests for assistance and the needs of the Special Populations
- Continue to track requests for information on disaster victims
- Conduct several Command Staff briefings during each shift brief next shift

5.) 24-48 Hours

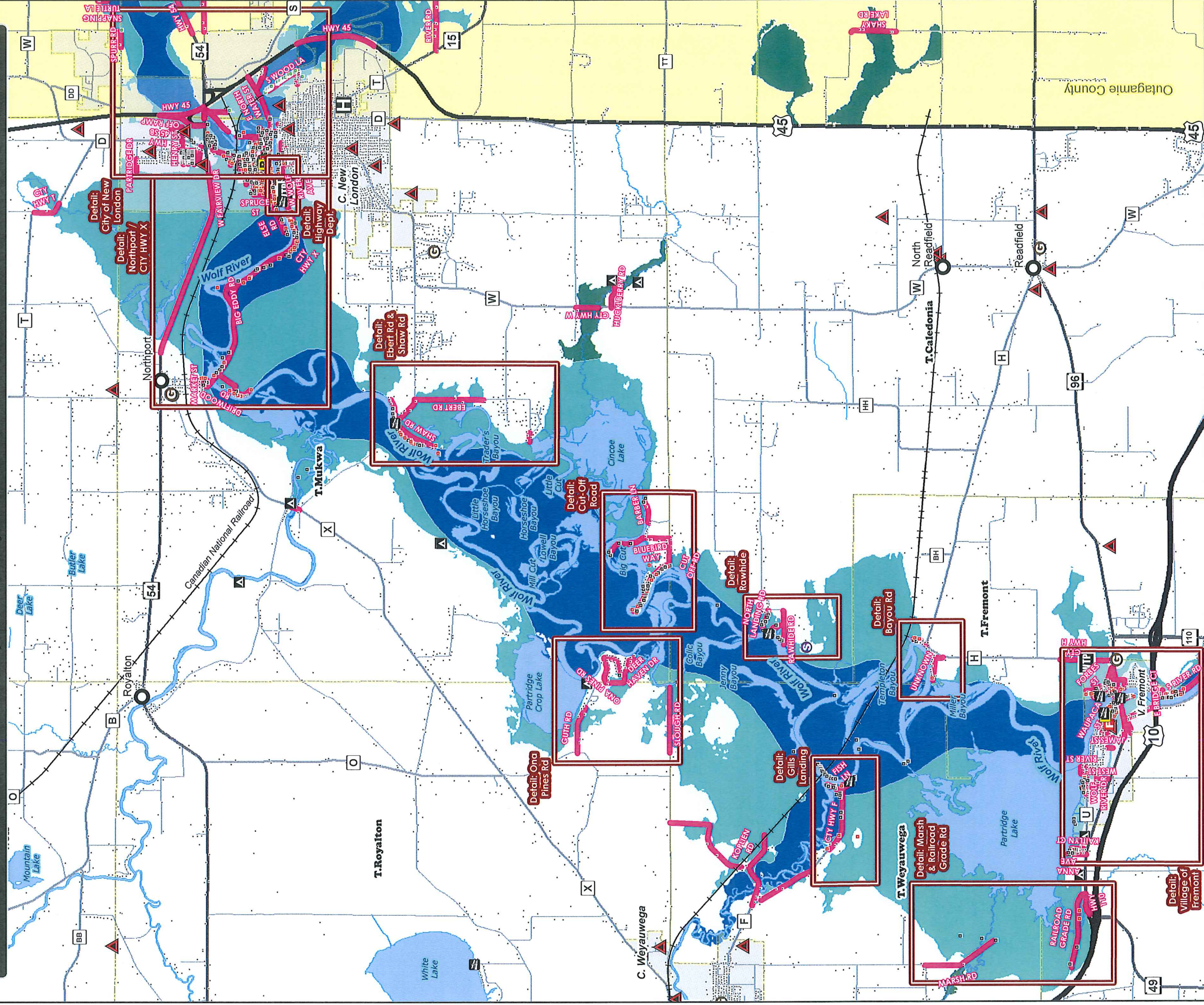
- Continue evacuations and search and rescue operations as needed
- Continue public information activities
- Continue operation of the Pass system if necessary
- Continue damage assessment activities and submit UDSR
- Continue repairs to critical facilities
- Consider the need for ongoing mutual aid
- Continue cleanup activities on public and private property
- Take the debris to an appropriate landfill
- Coordinate with utilities in the restoration of service
- Continue shelter operations if necessary
- Keep records of agency expenses
- Anticipate and address Public Health needs
- Continue to track the request for assistance and the needs of Special Populations
- Continue to track requests for information on disaster victims
- Coordinate activities of volunteers assisting with clean-up efforts
- Begin planning for reentry and long term recovery
- Conduct several Command Staff briefings during each shift
- Brief the next shift

6.) 48-?

- Continue public information activities
- Continue operation of the Pass System if necessary
- Continue damage assessment activities and submit UDSR
- Provide updated estimates to the state
- Consider the need for ongoing mutual aid
- Inform the hospital(s) of casualties as necessary
- Continue cleanup activities on public and private property
- Take debris to an appropriate land fill
- Coordinate with utilities in the restoration of services
- Continue shelter operations as needed
- Keep records of agency expenses
- Anticipate and address Public Health needs
- Continue to track the requests for assistance and the needs of Special Populations
- Continue to track the requests for information on disaster victims
- Coordinate planning for reentry and long term recovery
- Provide people to participate in the Preliminary Damage assessment
- Conduct several Command staff briefings during each shift
- Brief the next shift

Wolf River: Emergency Action Plan Overview

Waupaca County, Wisconsin



Critical Facilities

- Fire Station
- Government Facility
- Hazardous Facility
- Police
- Special Populations
- Waste Water Treatment

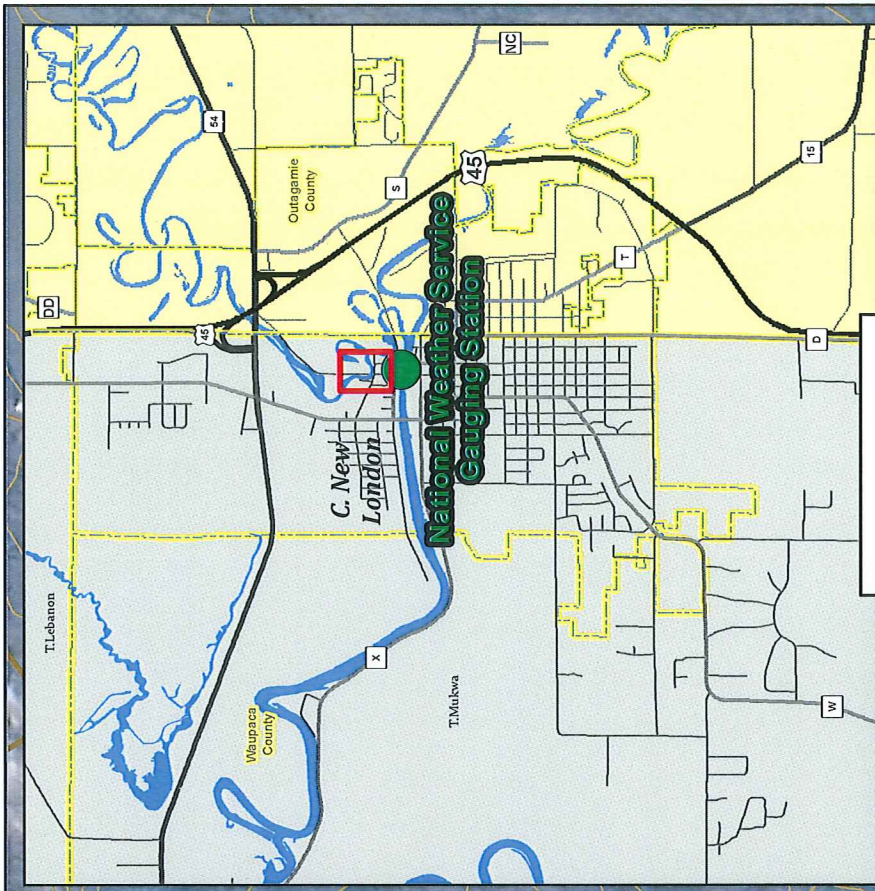
Structure Affected

- Permanent Occupation (241)
- Seasonal Occupation (552)
- Road Possibly Affected

Wolf River: FEMA Flood Hazards

- Zone A
- Zone AE
- Zone AE/Floodway





Area Overview

River Rd
When New London Gauge is at
10' - 0.5' Flood Water

Burton Rd
When New London Gauge is at
9' 6" - Potential for 3.5' Flood Water
9' 9" - Potential for 3.8' Flood Water
10' - Potential for 4.06' Flood Water

E Waupaca St
When New London Gauge is at
9' 6" - Potential for 5' Flood Water
9' 9" - Potential for 5.3' Flood Water
10' - Potential for 5.5' Flood Water

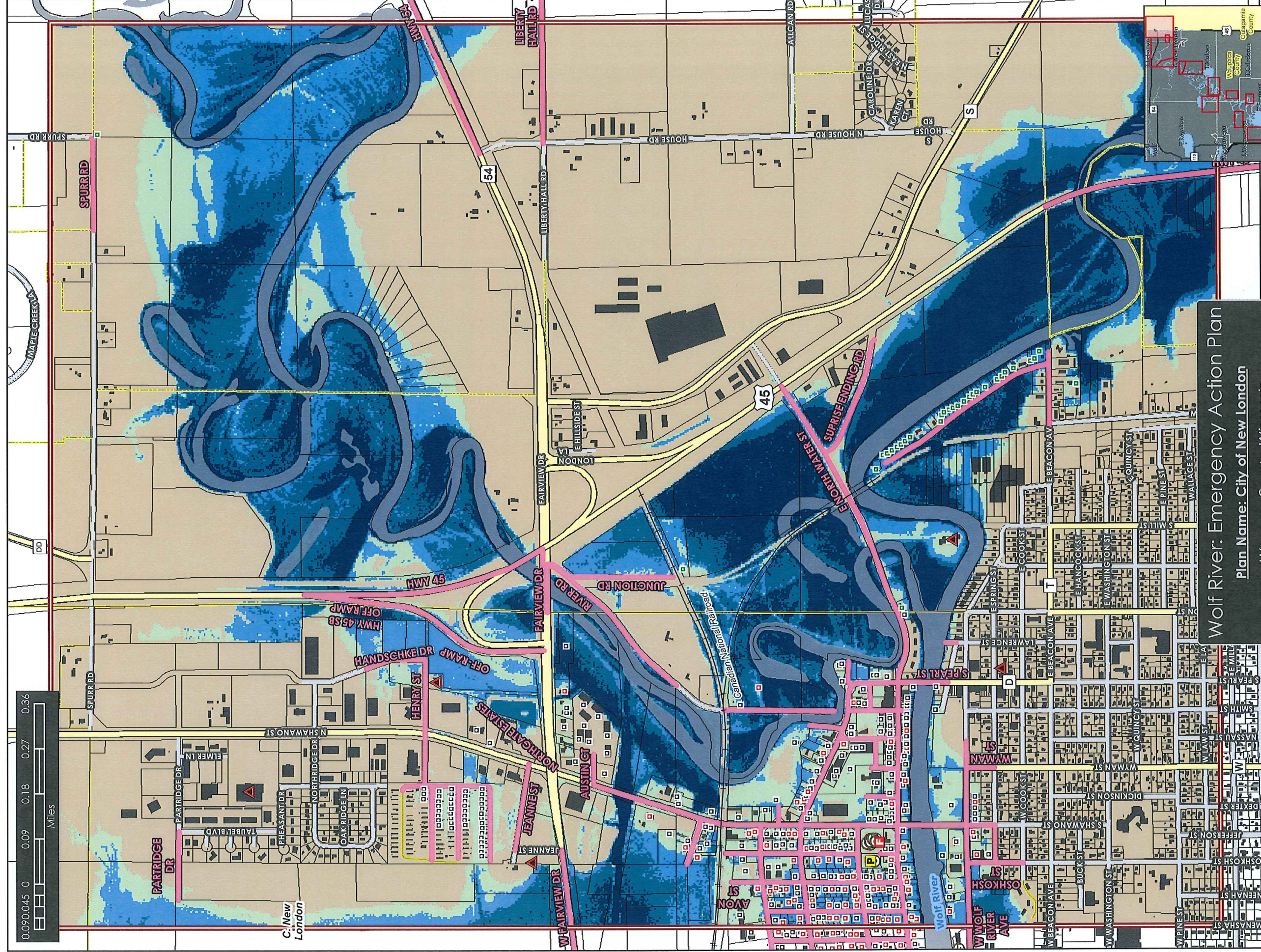
Wolf River: Emergency Action Plan

Roads with Highest Potential to Flood First

Waupaca County, Wisconsin

* Flood depths are an estimate only! During an actual flood, water depths may vary. Depths were calculated for using the gauge station at New London. The elevation of gauge is published as 747.81', but the datum is unknown. Flood Depths were estimated using LIDAR elevation data in NAVD88 datum. If the gauge is at 9' 6", we add this to 747.81' to find surface elevation of flood water (757.81'). This elevation raster was subtracted from base earth raster to calculate flood depth. Using the results we were able to calculate the estimated flood depth on road ways. This process could be improved if we had an elevation of the base of the gauge station in NAVD88.





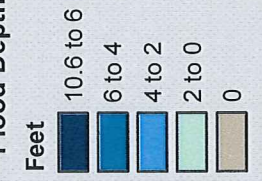
Wolf River: Emergency Action Plan
Plan Name: City of New London
Waupaca County, Wisconsin

- Critical Facilities**
- Fire Station
 - Government Facility
 - Hazardous Facility
 - Police
 - Sheriff
 - Special Populations
 - WTP

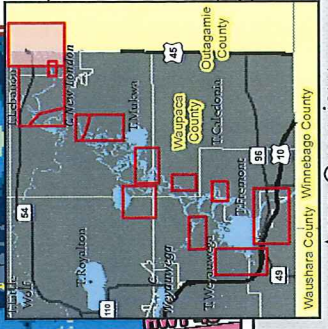
- Structures Affected (Counts Apply Within Detail Area)**
- Permanent Occupation (76)
 - Seasonal Occupation (252)

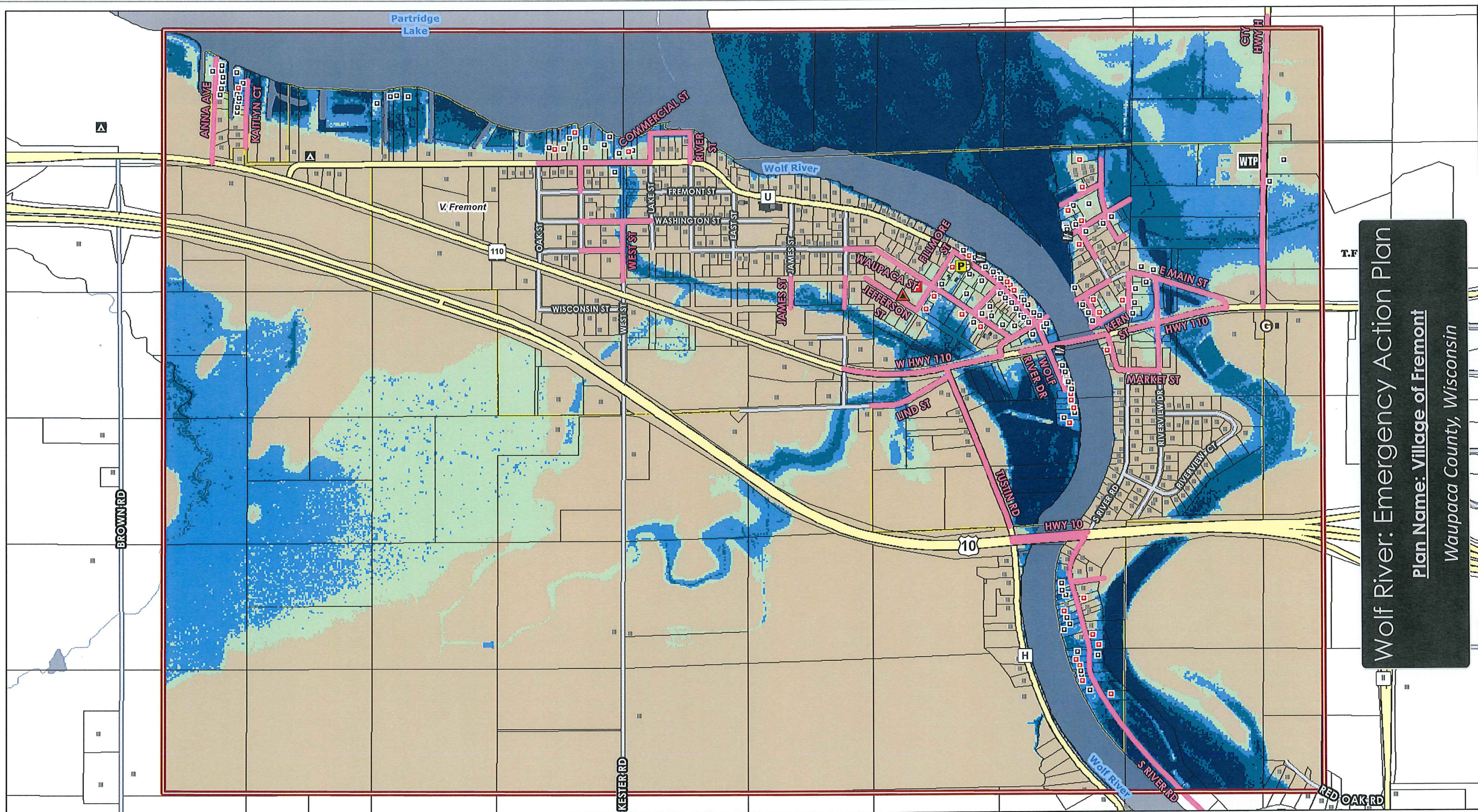
- Structures Affected - Outagamie County**
- Structures Affected - Outagamie County (31)

* Flood depths are an estimate only! During an actual flood, water depths may vary. Depths were calculated for a 100 year flood event. Depths were estimated using LIDAR elevations and FEMA flood elevation determinations (cross sections).



* Flood Depth - C. New London





Wolf River: Emergency Action Plan
 Plan Name: **Village of Fremont**
 Waupaca County, Wisconsin

Structures Affected (Counts Apply Within Detail Area)

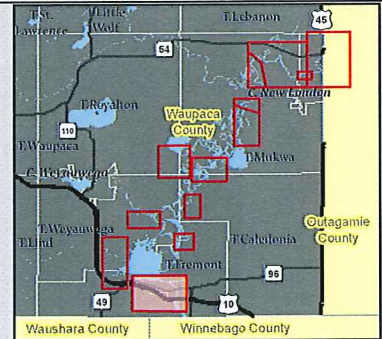
- Permanent Occupation (36)
- Seasonal Occupation (100)
- ~ Road Possibly Flooded

* Flood depths are an estimate only! During an actual flood, water depths may vary. Depths were calculated for a 100 year flood event. Depths were estimated using LiDAR elevations and FEMA flood elevation determinations (cross sections).

*** Flood Depth - V. Fremont**

- Feet**
- 9.2 To 6
 - 6 To 4
 - 4 To 2
 - 2 To 0
 - 0

Area Overview



Critical Facilities

- F Fire Station
- G Government Facility
- H Hazardous Facility
- P Police
- S Sheriff
- SP Special Populations
- WTP Waste Water Treatment





Wolf River: Emergency Action Plan
 Plan Name: Bayou Rd
 Waupaca County, Wisconsin

Structures Affected (Counts Apply Within Detail Area)

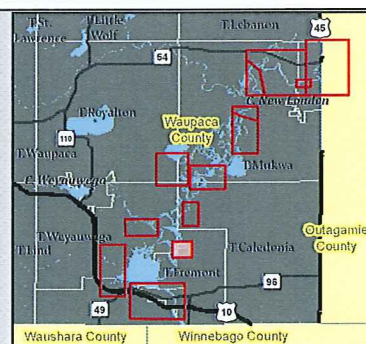
- Permanent Occupation (5)
- Seasonal Occupation (3)
- ~ Road Possibly Flooded

* Flood depths are an estimate only! During an actual flood, water depths may vary. Depths were calculated for a 100 year flood event. Depths were estimated using LiDAR elevations and FEMA flood elevation determinations (cross sections).

* Flood Depth - Bayou Rd

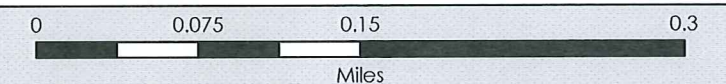
- Feet
- 10 to 6
 - 6 to 4
 - 4 to 2
 - 2 to 0
 - 0

Area Overview



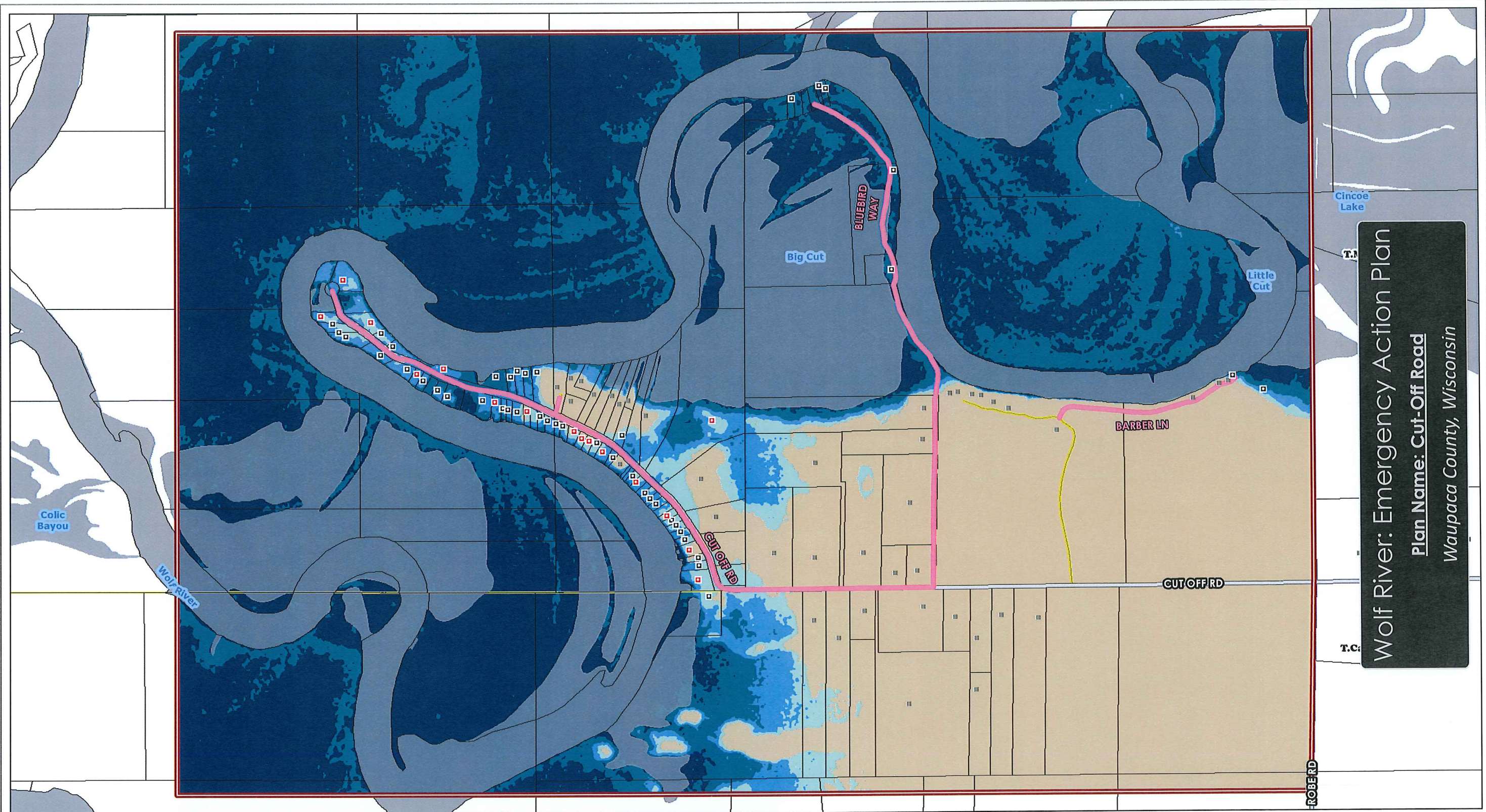
Critical Facilities

- F Fire Station
- G Government Facility
- H Hazardous Facility
- P Police
- S Sheriff
- SP Special Populations
- WTP Waste Water Treatment



Author: Ian Grasshoff
 Date: 8/5/2014, 8:42:40 AM

Document Path: U:\rsys\Depts\EM\Flood_Action_Plans\projects\Plan_Landscape_11x17.mxd



Wolf River: Emergency Action Plan
Plan Name: Cut-Off Road
Waupaca County, Wisconsin

Structures Affected (Counts Apply Within Detail Area)

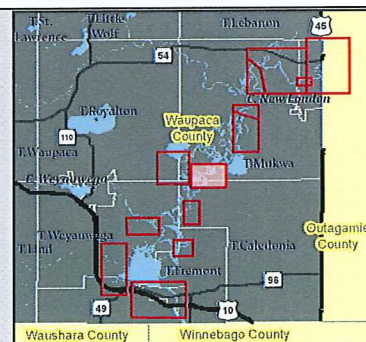
- Permanent Occupation (16)
- Seasonal Occupation (44)
- ~ Road Possibly Flooded

* Flood depths are an estimate only! During an actual flood, water depths may vary. Depths were calculated for a 100 year flood event. Depths were estimated using LiDAR elevations and FEMA flood elevation determinations (cross sections).

*** Flood Depth - Cutoff Rd**

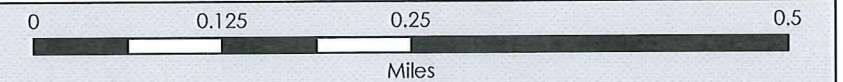
- Feet**
- 9 to 6
 - 6 to 4
 - 4 to 2
 - 2 to 0
 - 0

Area Overview



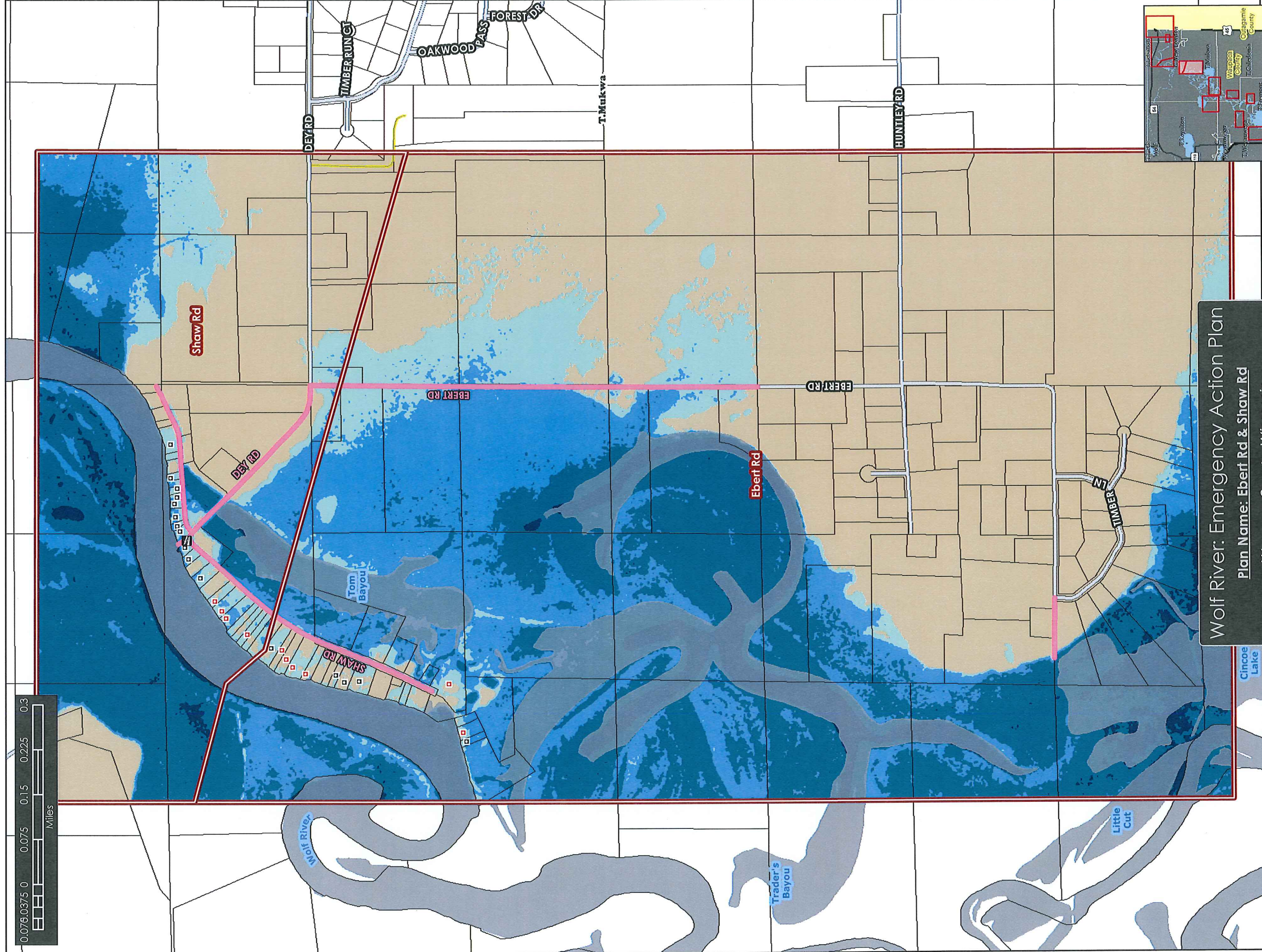
Critical Facilities

- F Fire Station
- G Government Facility
- H Hazardous Facility
- P Police
- S Sheriff
- SP Special Populations
- WTP Waste Water Treatment



Author: Ian Grasshoff
 Date: 8/5/2014, 8:41:57 AM

Document Path: U:\rsys\Depts\EM\Flood_Action_Plans\projects\Plan_Landscape_11x17.mxd



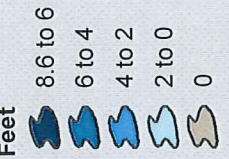
Wolf River: Emergency Action Plan
Plan Name: Ebert Rd & Shaw Rd
Waupaca County, Wisconsin

Critical Facilities

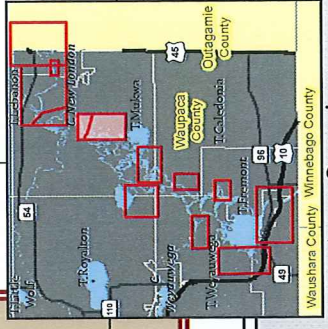
- Fire Station
- Government Facility
- Hazardous Facility
- Police
- Sheriff
- Special Populations
- Waste Water Treatment

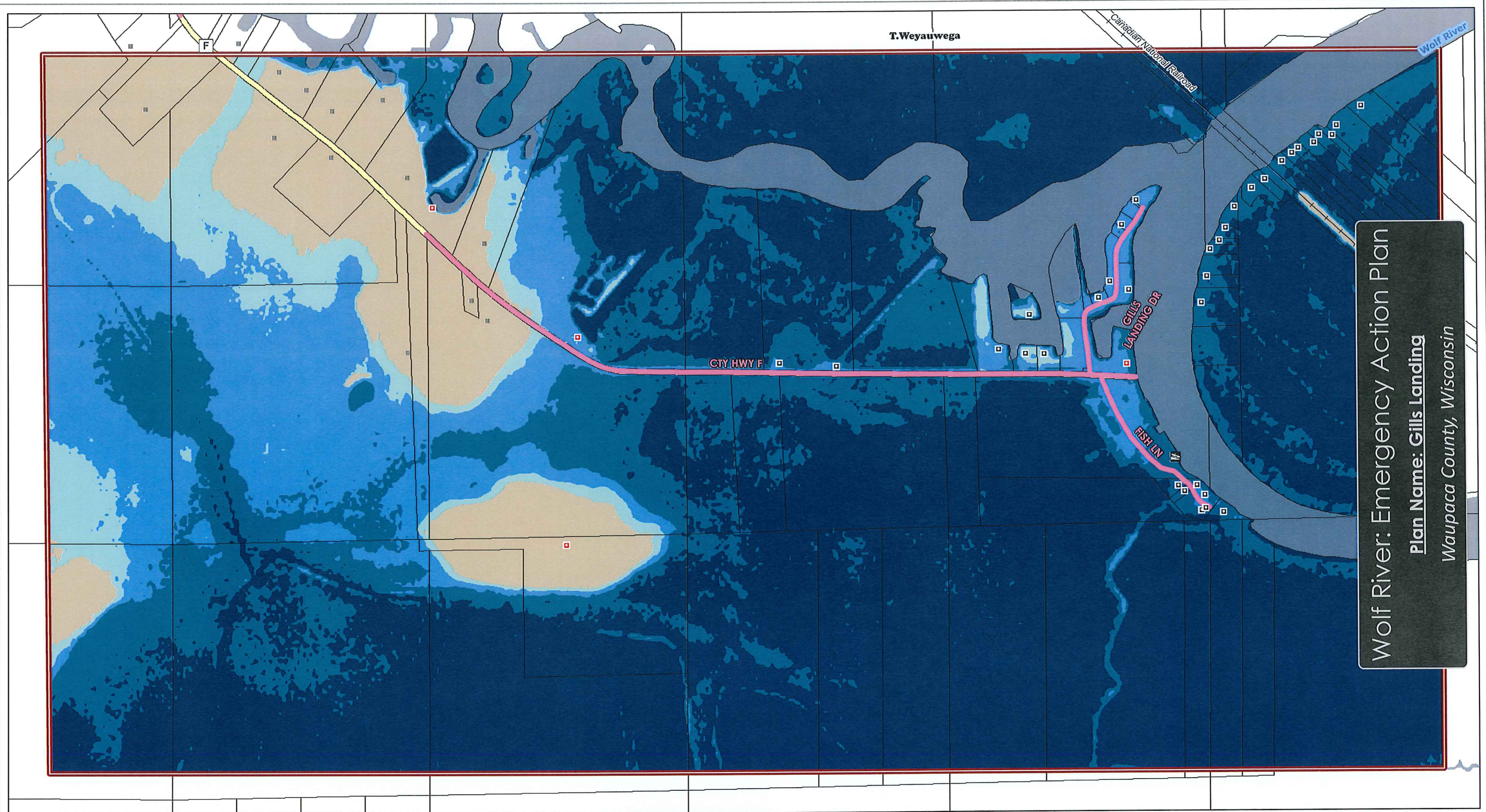
Structures Affected (Counts Apply Within Detail Area) * Flood Depth - Ebert Rd / Shaw Rd

- Permanent Occupation (10)
- Seasonal Occupation (16)



* Flood depths are an estimate only! During an actual flood, water depths may vary. Depths were calculated for a 100 year flood event. Depths were estimated using LIDAR elevations and FEMA flood elevation determinations (cross sections).





Wolf River: Emergency Action Plan
Plan Name: Gills Landing
Waupaca County, Wisconsin

Structures Affected (Counts Apply Within Detail Area)

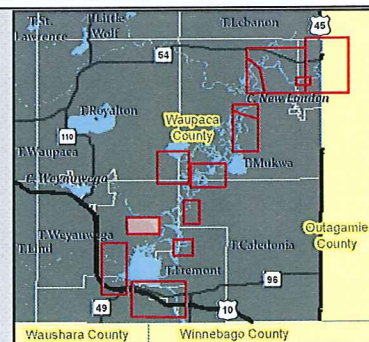
- Permanent Occupation (4)
- Seasonal Occupation (34)
- Road Possibly Flooded

* Flood depths are an estimate only! During an actual flood, water depths may vary. Depths were calculated for a 100 year flood event. Depths were estimated using LIDAR elevations and FEMA flood elevation determinations (cross sections).

*** Flood Depth - Gills Landing**

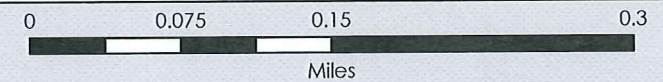
- Feet**
- 9.7 to 6
 - 6 to 4
 - 4 to 2
 - 2 to 0
 - 0

Area Overview



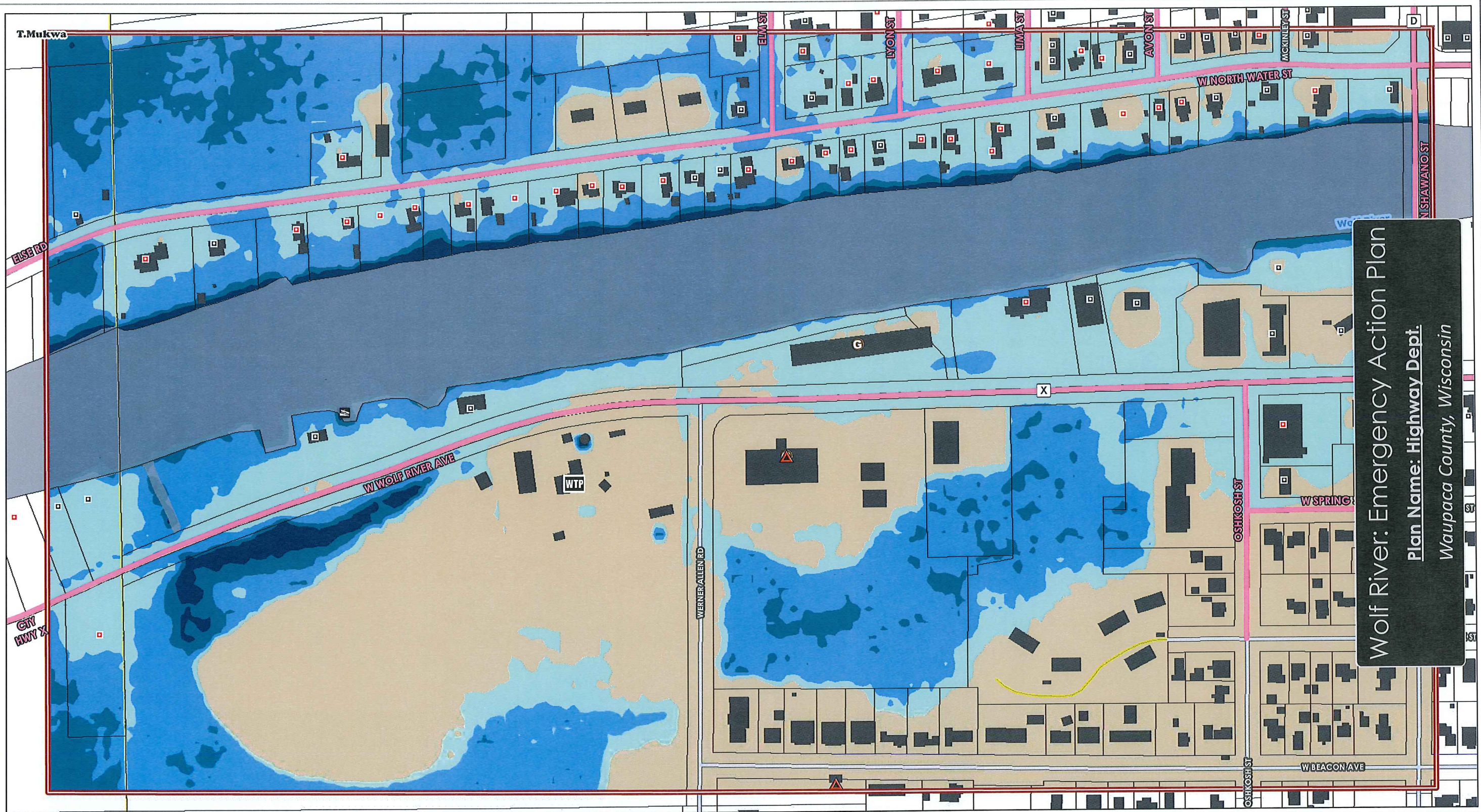
Critical Facilities

- Fire Station
- Sheriff
- Government Facility
- Special Populations
- Hazardous Facility
- Waste Water Treatment
- Police



Author: Ian Grasshoff
Date: 8/5/2014, 8:41:28 AM

Document Path: U:\rsys\Depts\EM\Flood_Action_Plans\projects\Plan_Landscape_11x17.mxd



Wolf River: Emergency Action Plan
 Plan Name: Highway Dept.
 Waupaca County, Wisconsin

Structures Affected (Counts Apply Within Detail Area)

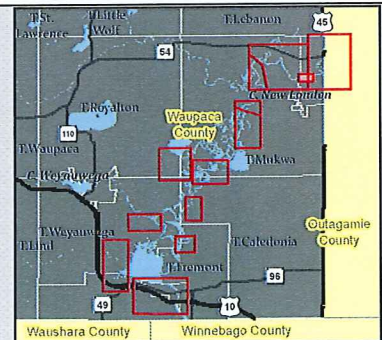
- Permanent Occupation (37)
- Seasonal Occupation (32)
- ~ Road Possibly Flooded

* Flood depths are an estimate only! During an actual flood, water depths may vary. Depths were calculated for a 100 year flood event. Depths were estimated using LiDAR elevations and FEMA flood elevation determinations (cross sections).

*** Flood Dept - Highway Dept**

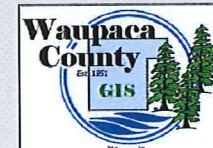
- Feet**
- 8.9 to 6
 - 6 to 4
 - 4 to 2
 - 2 to 0
 - 0

Area Overview



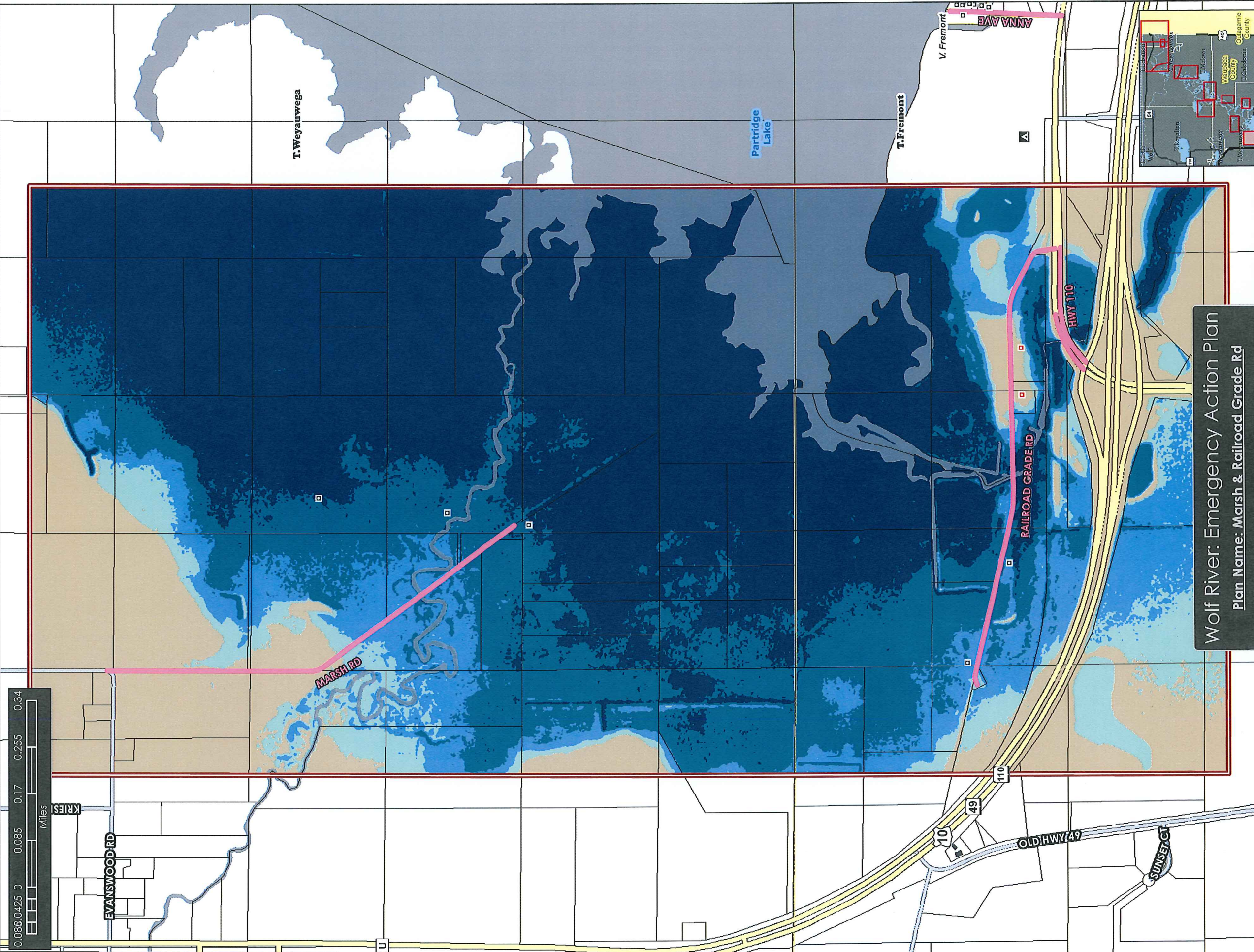
Critical Facilities

- F Fire Station
- G Government Facility
- H Hazardous Facility
- P Police
- S Sheriff
- SP Special Populations
- WTP Waste Water Treatment



Author: Ian Grasshoff
 Date: 8/5/2014, 8:37:23 AM

Document Path: U:\rsys\Depts\EM\Flood_Action_Plans\projects\Plan_Landscape_11x17.mxd



Wolf River: Emergency Action Plan
Plan Name: Marsh & Railroad Graded Rd
Waupaca County, Wisconsin

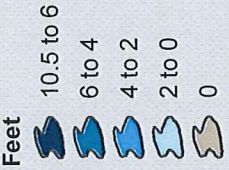
Critical Facilities

- Fire Station
- Government Facility
- Hazardous Facility
- Police
- Sheriff
- Special Populations
- Waste Water Treatment

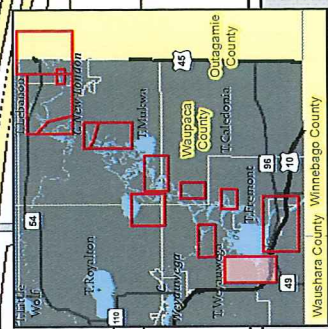
Structures Affected (Counts Apply Within Detail Area)

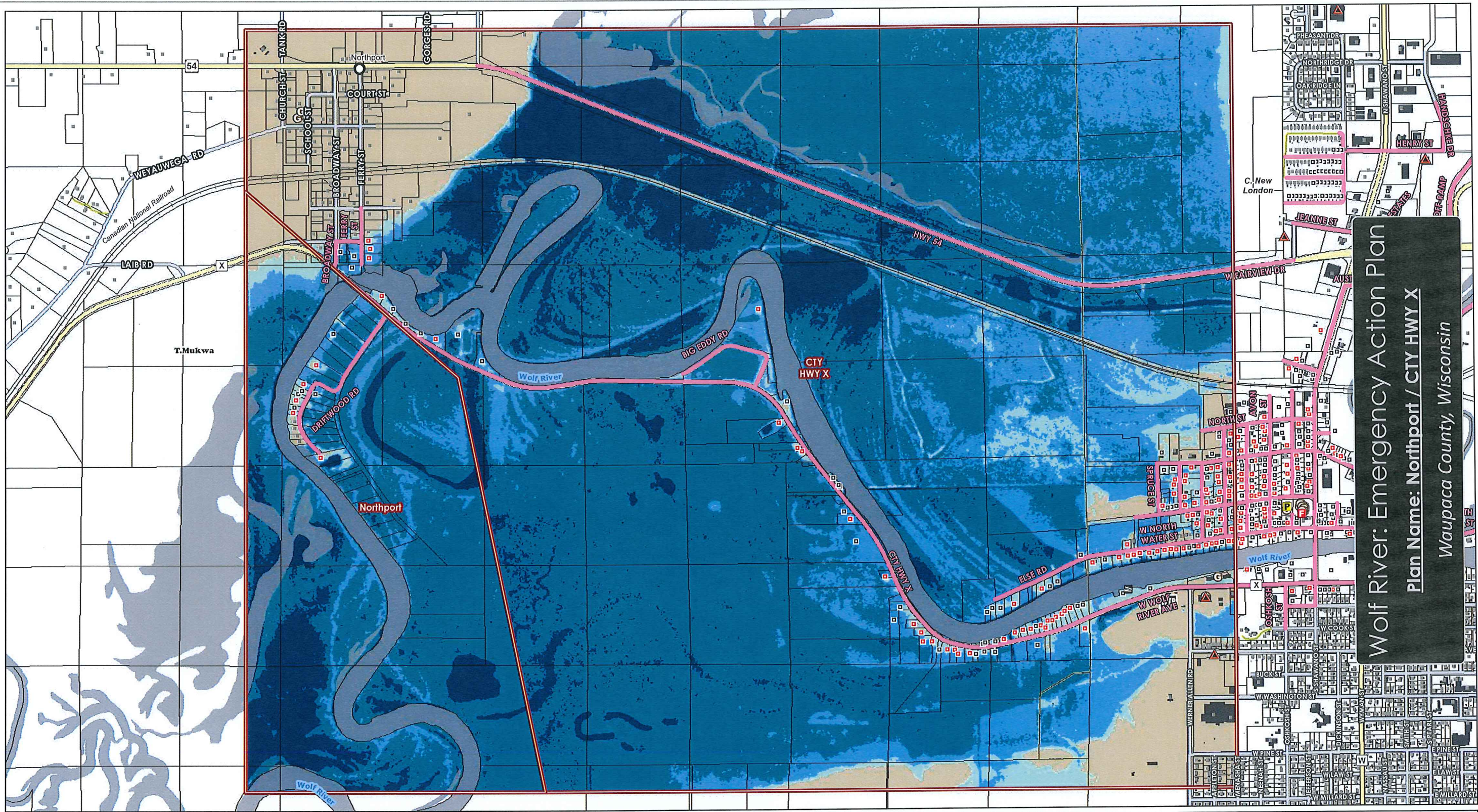
- Permanent Occupation (2)
- Seasonal Occupation (5)

*** Flood Depth - Marsh Rd**



* Flood depths are an estimate only! During an actual flood, water depths may vary. Depths were calculated for a 100 year flood event. Depths were estimated using LIDAR elevations and FEMA flood elevation determinations (cross sections).





Wolf River: Emergency Action Plan
Plan Name: Northport / CTY HWY X
Waupaca County, Wisconsin

Structures Affected (Counts Apply Within Detail Area)

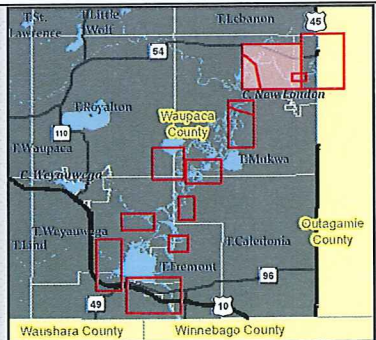
- Permanent Occupation (92)
- Seasonal Occupation (72)
- ~ Road Possibly Flooded

* Flood depths are an estimate only! During an actual flood, water depths may vary. Depths were calculated for a 100 year flood event. Depths were estimated using LiDAR elevations and FEMA flood elevation determinations (cross sections).

*** Flood Depth**

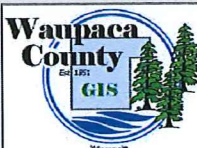
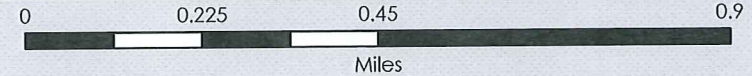
- Feet**
- 9 to 6
 - 6 to 4
 - 4 to 2
 - 2 to 0
 - 0

Area Overview



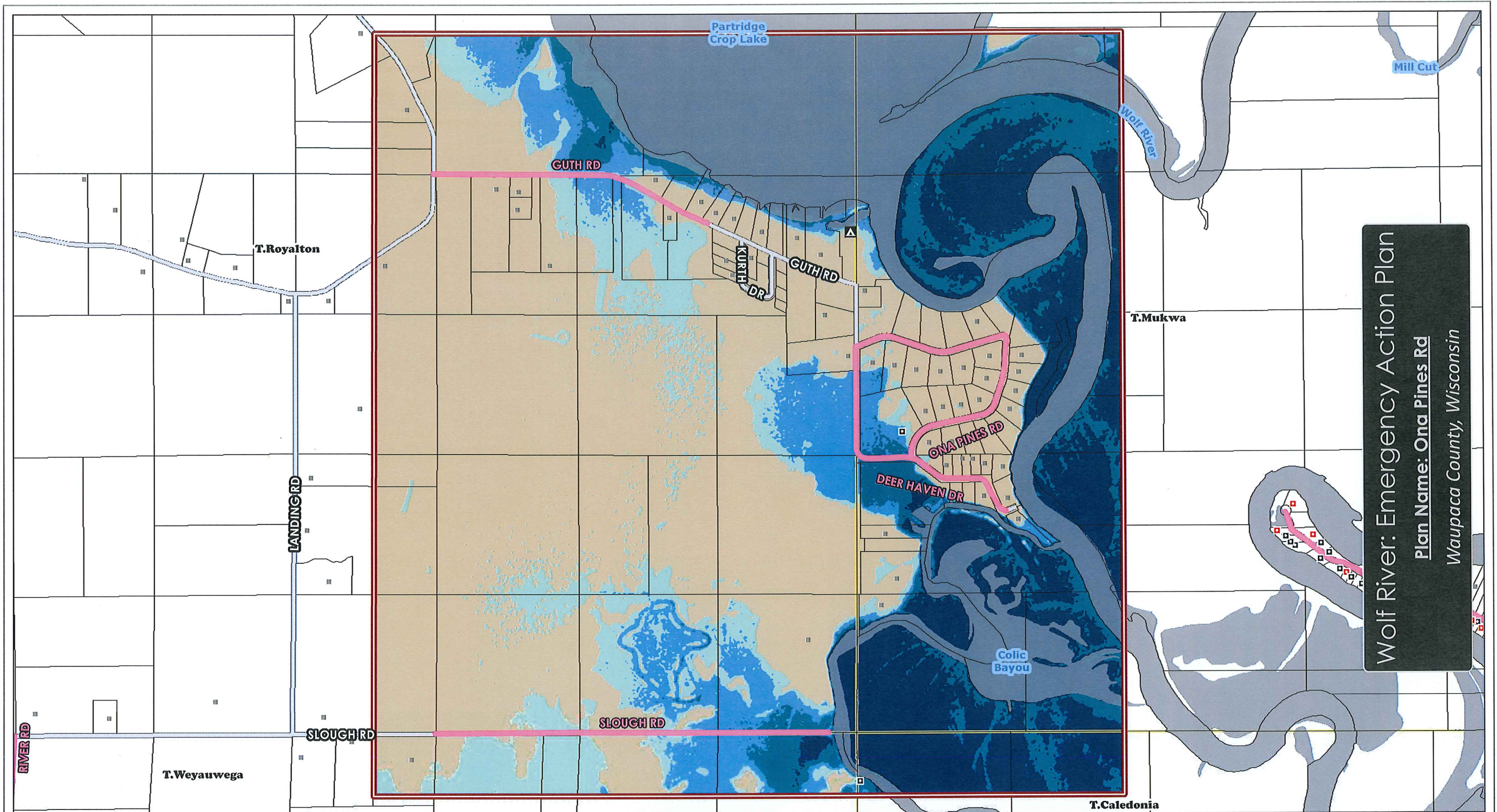
Critical Facilities

- F** Fire Station
- G** Government Facility
- H** Hazardous Facility
- P** Police
- S** Sheriff
- SP** Special Populations
- WTP** Waste Water Treatment



Author: Ian Grasshoff
 Date: 8/5/2014, 8:35:32 AM

Document Path: U:\rsys\Depts\EM\Flood_Action_Plans\projects\Plan_Landscape_11x17.mxd



Wolf River: Emergency Action Plan
 Plan Name: Ona Pines Rd
 Waupaca County, Wisconsin

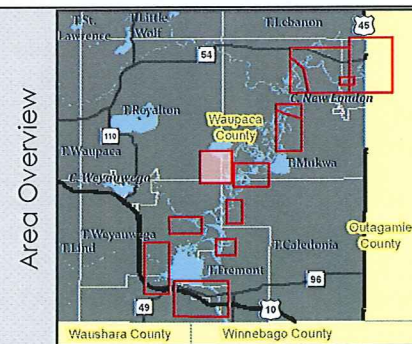
Structures Affected (Counts Apply Within Detail Area)

- ▣ Seasonal Occupation (2)
- ~ Road Possibly Flooded

* Flood depths are an estimate only! During an actual flood, water depths may vary. Depths were calculated for a 100 year flood event. Depths were estimated using LiDAR elevations and FEMA flood elevation determinations (cross sections).

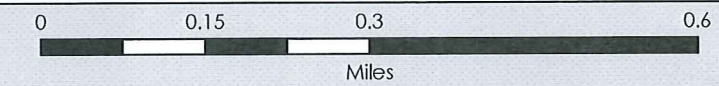
*** Flood Depth - Ona Pines**

- Feet**
- 9.2 to 6
 - 6 to 4
 - 4 to 2
 - 2 to 0
 - 0



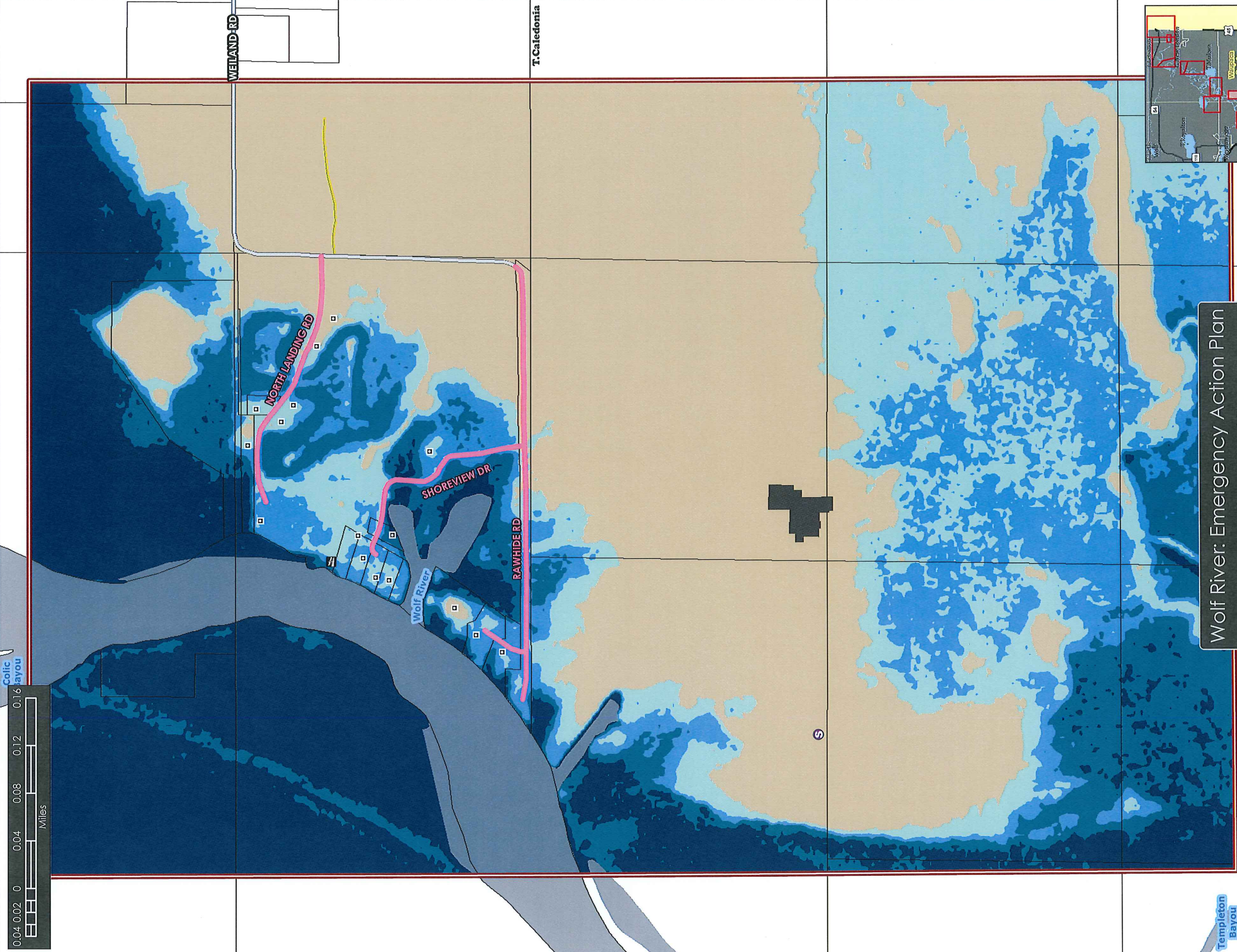
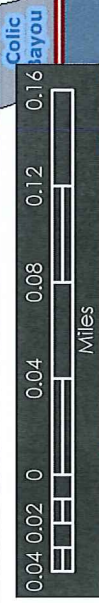
Critical Facilities

- | | |
|---------------------|-----------------------|
| Fire Station | Sheriff |
| Government Facility | Special Populations |
| Hazardous Facility | Waste Water Treatment |
| Police | |



Author: Ian Grasshoff
 Date: 8/5/2014, 8:27:23 AM

Document Path: U:\Irsys\Depts\EM\Flood_Action_Plans\projects\Plan_Landscape_11x17.mxd



Wolf River: Emergency Action Plan
Plan Name: Rawhide
Waupaca County, Wisconsin

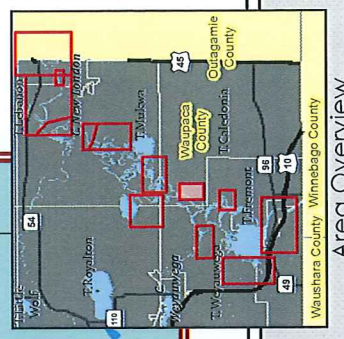
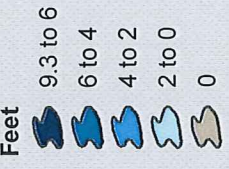
Critical Facilities

- Fire Station
- Government Facility
- Hazardous Facility
- Police
- Sheriff
- Special Populations
- Waste Water Treatment

- Structures Affected (Counts Apply Within Detail Area)**
- Permanent Occupation (0)
 - Seasonal Occupation (16)

* Flood depths are an estimate only! During an actual flood, water depths may vary. Depths were calculated for a 100 year flood event. Depths were estimated using LIDAR elevations and FEMA flood elevation determinations (cross sections).

*** Flood Depth - Rawhide**



Waupaca County GIS

Author: Ian Grasshoff
Date: 8/5/2014, 8:44:59 AM
Document Path: U:\Irsys\Depts\EM\Flood_Action_Plans\Portrait_11x17.mxd

Annex B

Bayou Road Map Area

Approx. 8 Structures

BAYOU RD

UNKNOWN

Annex B

City of New London Map Area

Approx. 359 Structures

AUSTIN CT	OFF-RAMP	WYMAN ST
AVON ST	OSHKOSH ST	E BEACON AV
BROAD ST	PARK ST	E NORTH WATER ST
BURTON RD	PARTRIDGE DR	FAIRVIEW DR
E NORTH WATER ST	RIVER RD	HWY 45
E WAUPACA ST	S PEARL ST	HWY 45 SB OFF RAMP
HANDSCHKE DR	S SHAWANO ST	HWY 54
HENRY ST	SAINT JOHNS PL	JUNCTION RD
JEANNE ST	SHIOCTON ST	LIBERTY HALL RD
LAWRENCE ST	STATE ST	RIVER RD
LIMA ST	W FAIRVIEW DR	S WOOD LA
LINCOLN CT	W NORTH WATER ST	SPURR RD
MCKINLEY ST	W SPRING ST	SUPRISE ENDING RD
N PEARL ST	W WAUPACA ST	
N SHAWANO ST	W WOLF RIVER AVE	
NORTH ST	WISCONSIN ST	
NORTHGATE ESTATES	WOLF RIVER PLZ	

Annex B

Cut Off Eoad Map Area

Approx. 60 Structures

BARBER LN

BIG CUT LN

BLUEBIRD WAY

CUT OFF RD

Annex B

Ebert Rd & Shaw Rd Map Area

Approx. 26 Structures

DEY RD

EBERT RD

SHAW RD

Annex B

Gills Landing Map Area

Approx. 38 Structures

CTY HWY F

FISH LN

GILLS LANDING DR

Annex B

Highway Dept. Map Area

Approx. 69 Structures

CTY HWY X

ELM ST

ELSE RD

LIMA ST

LYON ST

MCKINLEY ST

N SHAWANO ST

OSHKOSH ST

S SHAWANO ST

W NORTH WATER ST

W SPRING ST

W WOLF RIVER AVE

Annex B

Marsh & Railroad Grade Rd Map Area

Approx. 7 Structures

HWY 110

MARSH RD

RAILROAD GRADE RD

Annex B

Northport / CTY HWY X Map Area

Approx. 164 Structures

- BIG EDDY RD
- BROADWAY ST
- CTY HWY X
- DRIFTWOOD RD
- ELM ST
- ELSE RD
- FERRY ST
- HWY 54
- LYON ST
- MARKET ST
- NORTH ST
- SHIOCTON ST
- SPRUCE ST
- W FAIRVIEW DR
- W NORTH WATER ST
- W WAUPACA ST
- W WOLF RIVER AVE
- WEST ST

Annex B

Ona Pines Rd Map Area

Approx. 2 Structures

DEER HAVEN DR

GUTH RD

ONA PINES RD

SLOUGH RD

Annex B

Rawhide Map Area

Approx.16 Structures

NORTH LANDING RD

RAWHIDE RD

SHOREVIEW DR

SOUTH LANDING RD

Annex B

Village of Fremont Map Area

Approx. 136 Structures

ANNA AVE	RIVER ST
CASTELLO ST	RIVERVIEW DR
COMMERCIAL ST	ROWLEY ST
CTY HWY H	S RIVER RD
DOTY ST	THEODORE ST
E BRIDGE CT	TUSTIN RD
E MAIN ST	W HWY 110
FILLMORE ST	W MAIN ST
FORBES ST	WASHINGTON ST
FRANKLIN ST	WAUPACA ST
HIGH ST	WEST ST
HWY 10	WOLF RIVER DR
HWY 110	
JAMES ST	
JEFFERSON ST	
KAITLYN CT	
KERN ST	
LIND ST	
MARKET ST	
MILWAUKEE ST	
NORTH ST	

**Annex “C”
Affected Facilities**

New London Utilities – Office
400 E North Water Street

New London Municipal Building
215 N Shawano

New London Police Dept.
700 Shiocton Street

New London Municipal Garage
915 W Wolf River Ave

New London School District Bus Garage
900 W Wolf River Ave

Waupaca County Highway Dept Garage
1006 W Wolf River Ave

New London Waste Water Plant
1010 W Wolf River Ave

Saputo Cheese
405 W Wolf River Ave

Annex D

Resources:

1. Law Enforcement

- a. Sheriff’s Department patrol cars equipped with sirens and external speakers (PA)
- b. Waupaca County Sheriff’s Department Boat Patrol
 - i. 2 boats dedicated to the Wolf River
 - ii. 2 boats dedicated to the Chain of Lakes
 - iii. 1 personal water craft
- c. 1-4 wheel ATV
- d. 1-EMRAP (SWAT vehicle)

2. Mass Notification

- a. Code Red

3. Highway/Public Works Department

- a. Loaders
- b. Graders
- c. Trucks

4. New London Fire Department

- a. 18’ rescue boat

5. Weyauwega Fire Department

- a. Rescue boat

6. Fremont Fire Department

- a. Rescue boat

7. Mutual-aid fire departments

- a. Clintonville – rescue boat
- b. Clintonville – Argo 8-wheel drive UTV
- c. Manawa – rescue boat
- d. Boom Bay – Air Boat
- e. Poy Sippy – Air Boat