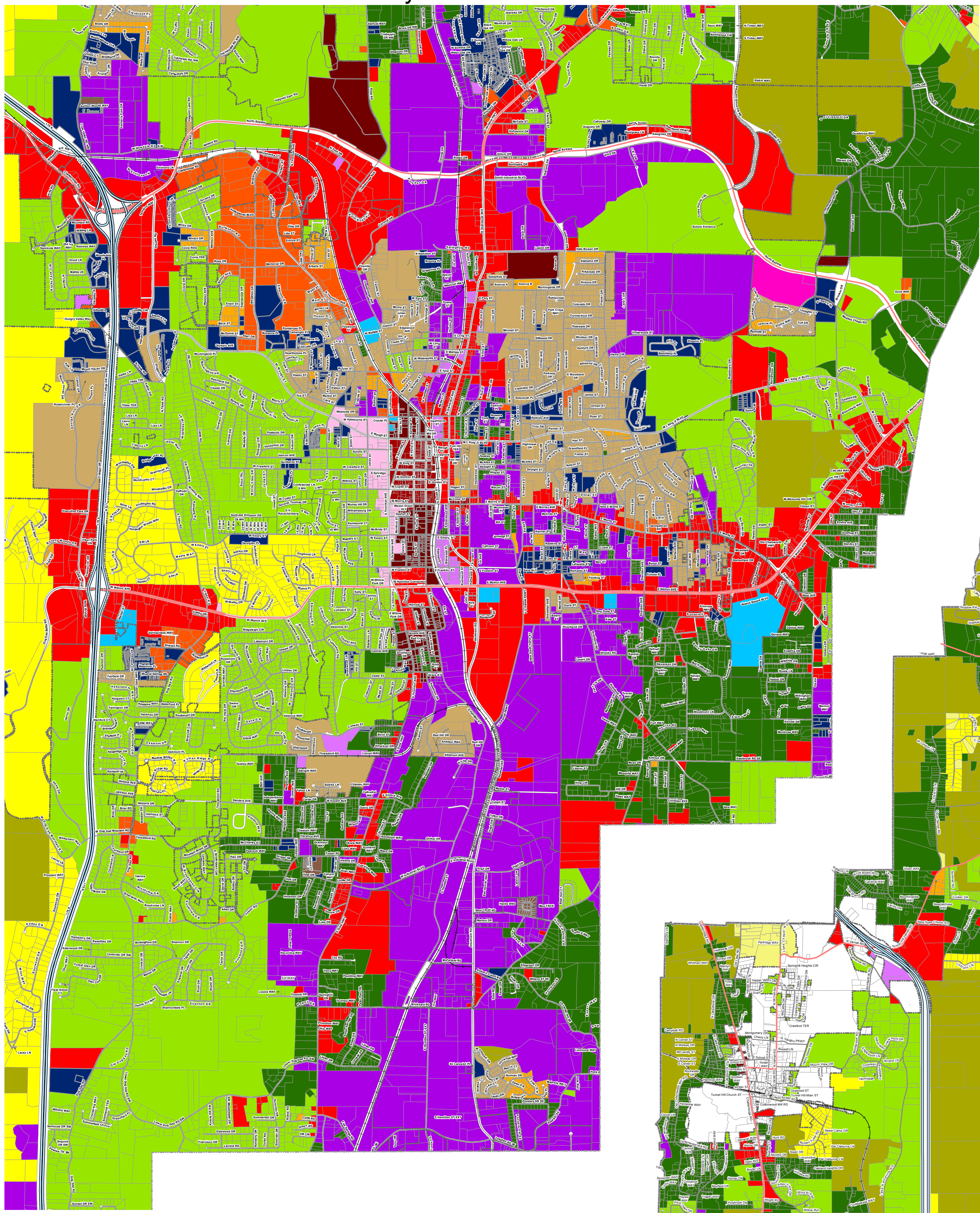
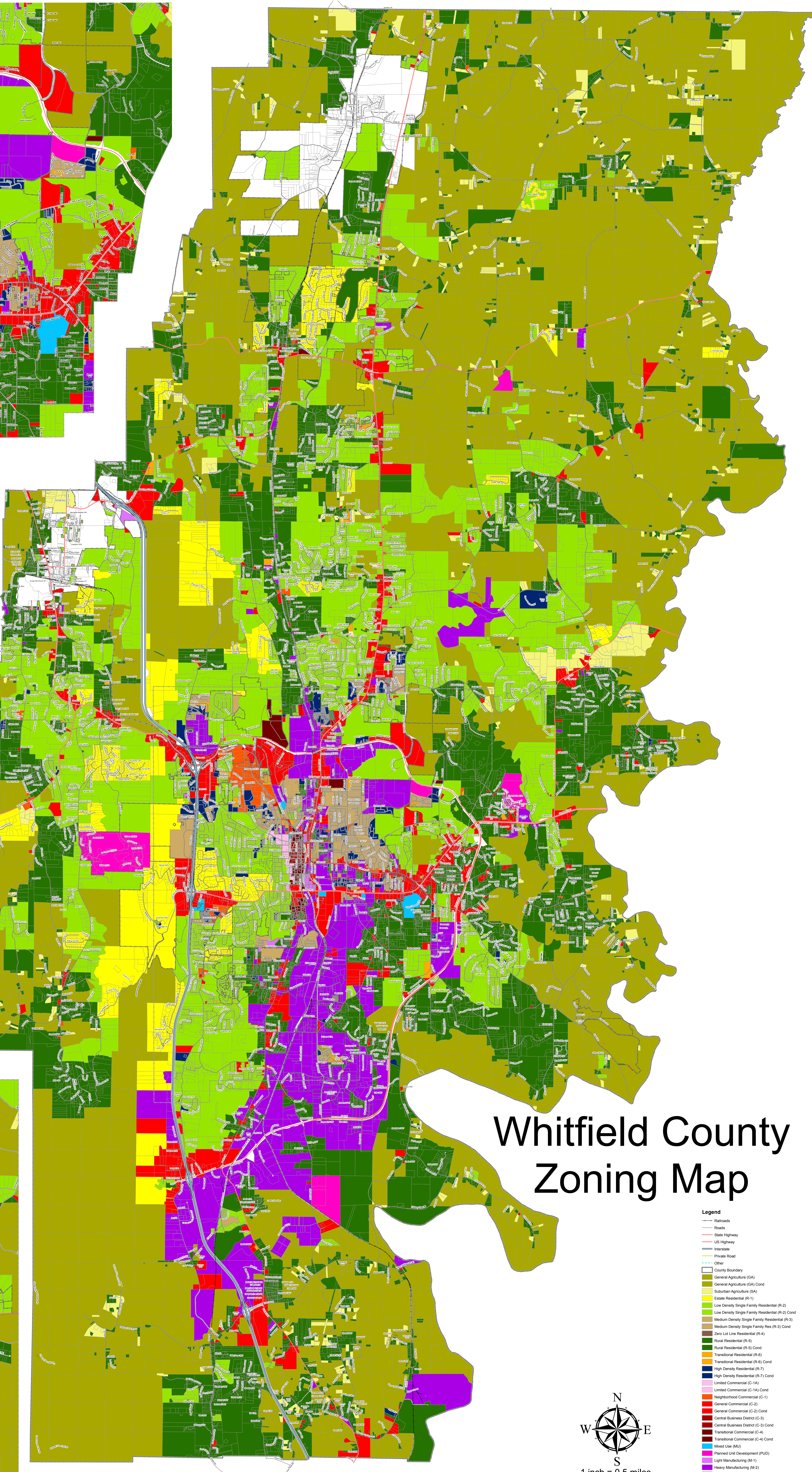
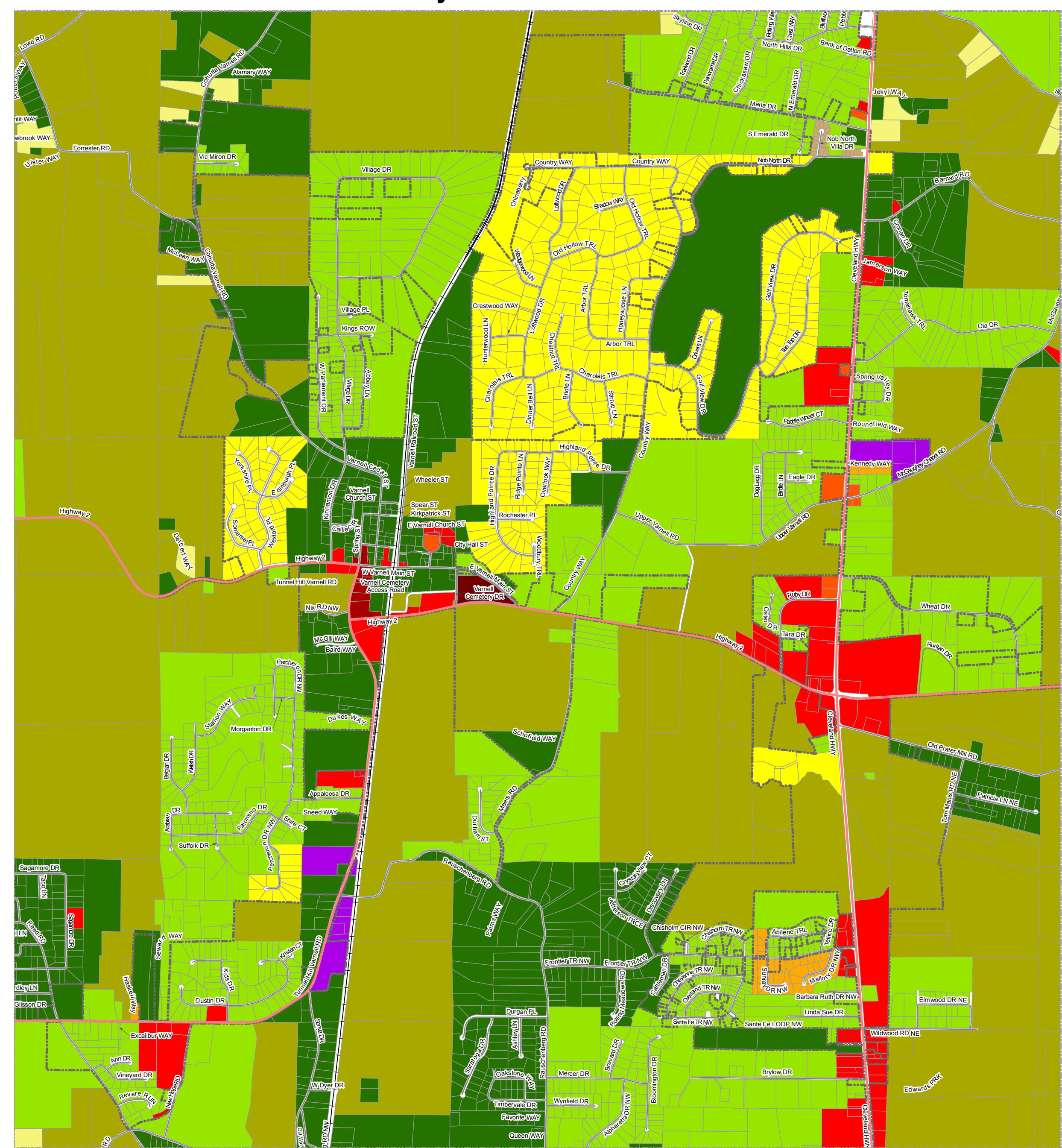


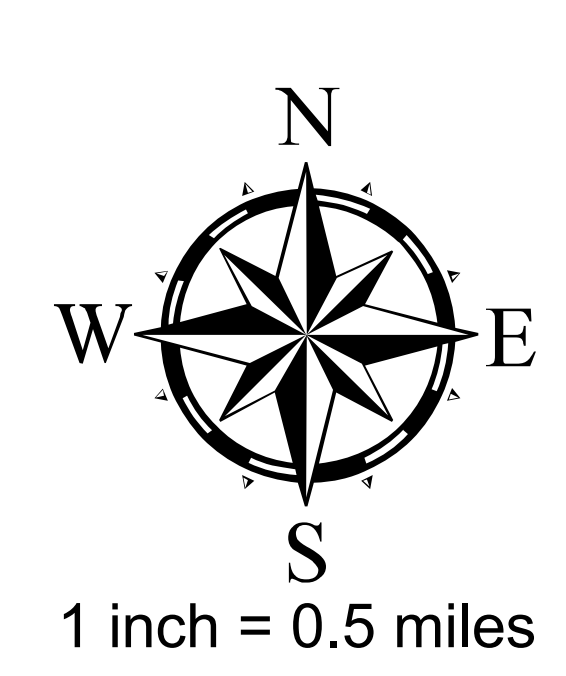
City of Dalton Inset



City of Varnell Inset



Whitfield County Zoning Map



1 inch = 0.5 miles

- Legend**
- Railroads
 - Roads
 - State Highway
 - US Highway
 - Interstate
 - Private Road
 - Other
 - County Boundary
 - General Agriculture (GA)
 - General Agriculture (GA) Cond
 - Suburban Agriculture (SA)
 - Estate Residential (R-1)
 - Low Density Single Family Residential (R-2)
 - Low Density Single Family Residential (R-2) Cond
 - Medium Density Single Family Residential (R-3)
 - Medium Density Single Family Res (R-3) Cond
 - Zero Lot Line Residential (R-4)
 - Rural Residential (R-5)
 - Rural Residential (R-5) Cond
 - Transitional Residential (R-6)
 - Transitional Residential (R-6) Cond
 - High Density Residential (R-7)
 - High Density Residential (R-7) Cond
 - Limited Commercial (C-1A)
 - Limited Commercial (C-1A) Cond
 - Neighborhood Commercial (C-1)
 - General Commercial (C-2)
 - General Commercial (C-2) Cond
 - Central Business District (C-3)
 - Central Business District (C-3) Cond
 - Transitional Commercial (C-4)
 - Transitional Commercial (C-4) Cond
 - Mixed Use (MU)
 - Planned Unit Development (PUD)
 - Light Manufacturing (M-1)
 - Heavy Manufacturing (M-2)
 - Heavy Manufacturing (M-2) Cond
 - Zoned within the City of Cohutta
 - Zoned within the City of Tunnel Hill